


<b>Charleston</b> excellence is our standard <b>County SCHOOL DISTRICT</b> <b>Citizens Oversight Steering Committee – II</b>	February 3, 2021 - 1:00PM Zoom Meeting Meeting ID: 998 8731 2162 Passcode: 943323	STUDENTS ARE THE HEART  OF OUR WORK!
--	--	--

## Meeting Agenda

I.	Welcome & Introductions	
II.	Old Business	N/A
III.	New Business	N/A
IV.	Communications & Marketing	N/A
V.	Financial Report (PFM)	<input type="checkbox"/> Action <input checked="" type="checkbox"/> Information
VI.	Capital Projects Financial Report	<input type="checkbox"/> Action <input checked="" type="checkbox"/> Information
VII.	<b>Construction Report</b> <ul style="list-style-type: none"> <li>Robert Sturman</li> <li>Rick Holt - Cumming</li> </ul>	<input type="checkbox"/> Action <input checked="" type="checkbox"/> Information
VIII.	Once Around	
IX.	Adjourn	

CAPITAL PROGRAM  
2010 - 2016 BUILDING PROGRAM  
One Cent Sales Tax  
November 30, 2020

Project #		Revised Budget	CM Fees	Working Budget	Expenditures Inception November-20	Projected Expenses To Go as of November-20	Notes	% Construction Completed	% Expended	Anticipated Completion (mm/yy)
<b>CONSTRUCTION MANAGEMENT PROJECTS</b>										
<b>WAVE 1</b>										
5130	BUIST ACADEMY	31,084,882	(1,638,451)	29,446,431	29,446,430	0	(1), (7), (8), (9), (12)	100%	100%	Complete
5131	CHARLESTON PROGRESSIVE ES	22,838,130	(778,827)	22,059,303	22,059,304	(0)	(1), (2), (9), (12), (15)	100%	100%	Complete
5132	JAMES SIMONS ES	25,878,295	(1,201,400)	24,676,895	24,676,893	(0)	(1), (9), (12)	100%	100%	Complete
5133	MEMMINGER ES	21,580,155	(959,356)	20,620,799	20,620,797	0	(4), (7), (8), (9)	100%	100%	Complete
<b>WAVE 2</b>										
5144	MONTESSORI SPRINGFIELD SUPPORT FACILITY	10,033,404	(273,928)	9,759,476	9,759,477	0	(5), (9), (12), (17)	100%	100%	Complete
5148	CENTER FOR ADVANCE STUDIES at WANDO	43,696,077	(2,314,045)	41,382,032	41,382,031	0	(3), (6), (9), (13), (15), (17), (20)	100%	100%	Complete
5150	HARBORVIEW ES	24,970,083	(1,209,847)	23,760,236	23,760,237	0	(6), (7), (9), (15), (17)	100%	100%	Complete
<b>WAVE 3</b>										
5143	CHICORA ES	27,575,944	(1,278,329)	26,297,615	26,297,116	499	(14), (15), (20)	100%	100%	Completed
5145	* JENNIE MOORE ES	38,392,751	(1,570,519)	36,822,232	36,822,230	0	(9), (12), (17)	100%	100%	Completed
5149	ST ANDREWS MATH & SCIENCE ES	32,388,212	(1,516,613)	30,871,599	30,871,599	0	(10), (12), (15), (18)	100%	100%	Completed
<b>WAVE 4</b>										
5147	*, A LAING MS	40,446,070	(1,785,096)	38,660,974	38,660,973	(0)	(9), (10), (12), (13), (15)	100%	100%	Completed
5153	** JAMES ISLAND CHARTER HS	23,369,471	(1,141,365)	22,228,106	22,228,107	(0)	(9), (12), (13), (15)	100%	100%	Completed
5158	EMERGENCY OPERATIONS CENTER @ BRIDGE VIEW	4,794,498	(156,500)	4,637,998	3,661,197	976,800	(12), (17), (18), (20)	79%	79%	Aug-21
<b>WAVE 5</b>										
5151	SPRINGFIELD ES	22,710,266	(1,511,168)	21,199,098	21,199,098	-	(5), (9), (10), (12), (18), (20)	100%	100%	Completed
5152	NORTH CHARLESTON CREATIVE ARTS ES	28,720,106	(1,237,240)	27,482,866	27,482,866	(0)	(7), (13), (15), (18)	100%	100%	Completed
5154	MURRAY LASAINE ES	9,789,563	(456,546)	9,333,017	9,333,017	0	(13), (15)	100%	100%	Completed
5155	ANGEL OAK ES	18,144,420	(792,238)	17,352,182	17,351,682	500	(9), (13), (14), (17), (18), (20)	100%	100%	Completed
5159	LOWCOUNTRY TECH @ BURKE HS	6,053,865	(228,273)	5,825,592	5,821,167	4,425	(10), (13), (17), (18), (20)	100%	100%	Completed
<b>WAVE 6</b>										
5182	MARY FORD ES	115,065	(20,000)	95,065	95,065	-	(15)	100%	100%	Completed
5183	NORTHWOODS MS	129,775	(20,000)	109,775	109,775	-	(15)	100%	100%	Completed
5184	C E WILLIAMS	40,715	(20,000)	20,715	20,715	-	(15)	100%	100%	Completed
5185	WEST ASHLEY MS	154,795	(20,000)	134,795	134,795	-	(15), (17), (18)	100%	100%	Completed
5186	DUNSTON ES	975,000	(55,000)	920,000	920,000	-		100%	100%	Completed
5188	GARRETT ACADEMY	29,358	0	29,358	29,358	0	(9), (15), (17)	100%	100%	Completed
5191	ST ANDREWS MS	28,425	0	28,425	28,425	-	(9), (15)	100%	100%	Completed
<b>WAVE 7</b>										
5156	PINEHURST ES	14,742,332	(698,516)	14,043,816	14,038,816	5,000	(17), (20)	100%	100%	Completed
5161	CAROLINA PARK (LAND)	2,136,949	(35,000)	2,101,949	2,101,949	-	(9), (15)	100%	100%	Completed
5165	CAROLINA BAY (LAND)	35,800	(35,000)	800	800	-	(14), (15)	0%	100%	TBD
5171	INGLESIDE CAMPUS (LAND)	150,000	(35,000)	115,000	0	115,000	(9)	0%	0%	TBD
5173	Σ DISTRICT 3 BUS LOT	7,400,000	(275,000)	7,125,000	477,045	6,647,955	(18), (19)	7%	7%	TBD
5174	DISTRICT 4 BUS LOT	3,142,009	(435,926)	2,706,083	2,706,083	0	(11), (13), (15), (16), (18), (20)	100%	100%	Completed
5178	◇ STONO PARK ES (Board Approved Budget \$27,330,983)	26,580,983	(1,697,990)	24,882,993	24,774,055	108,938	(11), (16), (20)	100%	100%	Completed
5180	Ω DISTRICT WIDE ATHLETIC IMPROVEMENTS	11,875,096	(472,375)	11,402,721	10,636,595	766,126	(9), (12), (13), (14), (18), (20)	99%	93%	TBD
5136	CMFEE - CUMMING	0	4,578,036	4,578,036	4,578,035	(0)		N/A	100%	N/A
5137	CMFEE - CUMMING 2010-2016	0	19,291,514	19,291,514	19,179,382	112,132		N/A	99%	N/A
5137	Adjustment to Contract (projects not started)	0	-	-	0	-		N/A	N/A	N/A
9976	WAVE 1 PROGRAM CONTINGENCY	0	0	0	0	-		N/A	N/A	N/A
<b>Total Construction Management Projects</b>		<b>500,002,492</b>	<b>0</b>	<b>500,002,493</b>	<b>491,265,112</b>	<b>8,737,378</b>				

Project #		Revised Budget	CM Fees	Working Budget	Expenditures Inception November-20	Projected Expenses To Go as of November-20	Notes	% Construction Completed	% Expended	Anticipated Completion (mm/yy)
<b>PROGRAM CONTINGENCY / MANAGEMENT</b>										
5139	PROGRAM MANAGEMENT OFFICE (PMO)	2,947,837	0	2,947,837	2,947,836	-				
5140	CAPITAL PROJECTS ACCOUNTING	736,088	0	736,088	736,088	0				
5141	CONSTRUCTION PROCUREMENT	684,244	0	684,244	684,243	(0)				
5142	IT PROJECT MANAGEMENT	1,601,114	0	1,601,114	1,538,993	62,121				
5599	BOND FUND ADMIN	708,739	0	708,739	704,838	3,900				
9988	PROGRAM CONTINGENCY - BAN - FUND #573	18,477	0	18,477	0	18,477				
9989	PROGRAM CONTINGENCY -ONE CENT SALES TAX- FUND #574	1,050,302	0	1,050,302	0	1,050,302	(9), (10), (11), (12), (13), (15), (16), (18)			
<b>Total Program Contingency / Management</b>		<b>7,746,800</b>	<b>0</b>	<b>7,746,800</b>	<b>6,611,997</b>	<b>1,134,799</b>				
<b>TOTAL 2010 - 2016 BUILDING PROGRAM</b>		<b>507,749,292</b>	<b>0</b>	<b>507,749,293</b>	<b>497,877,109</b>	<b>9,872,177</b>				

\* Laing Middle School \$3,400,000 and Jennie Moore Elementary School \$4,500,000 funded GO Bond

^ Laing Middle School \$74,411 non-OCST funding source

\*\* James Island Charter HS \$466,726 non-OCST funding source

Ω District Wide Athletic Improvements \$100,000 non-OCST funding source

◊ Stono Park ES Board Approved Budget (4/23/18) \$27,330,983  
Funding Sources:

- Sales Tax - Original Budget \$6,000,000

- Sales Tax - 9/12/16 Reallocation \$9,841,850

- Sales Tax - 4/23/18 Reallocation \$2,500,000

- Excess Projected Revenues \$2,389,133

- District 8% Capacity \$6,600,000

Σ District 3 Bus Lot \$2,100,000 non-OCST funding source

**NOTES:**

- (1) Board Approved Reallocation - 7/23/12 - Item #11.3 - Project #5130 (3,050,000)  
Board Approved Reallocation - 7/23/12 - Item #11.3 - Project #5131 3,501,000  
Board Approved Reallocation - 7/23/12 - Item #11.3 - Project #5132 (451,000)
- (2) Board Approved Reallocation - 11/12/12 - Item #12.2 - Project #5131 650,000  
Board Approved Reallocation - 11/12/12 - Item #12.2 - Project #9976 (650,000)
- (3) Board Approved Name Change-3/11/13 - Items #10.1B - Project #5148
- (4) Board Approved Reallocation - 6/10/13 - Exec I Item #1.5 - Project #5133 400,000  
Board Approved Reallocation - 6/10/13 - Exec I Item #1.5 - Project #9976 (400,000)
- (5) Board Approved Reallocation - 8/12/13 - Exec I Item #1.4 Project #5151 4,300,000  
Board Approved Reallocation - 8/12/13 - Exec I Item #1.4 Project #5144 (4,300,000)
- (6) Board Approved Sales Tax Capital Program Cash Flow Management  
Board Update/Approved Project Savings - 9/20/13 - Project #5148 (5,000,000)  
Board Update/Approved Project Savings - 9/20/13 - Project #5150 (1,000,000)
- (7) Board Approved Reallocation - 8/11/14 - Item #10.1G - Project #5130 (1,000,000)  
Board Approved Reallocation - 8/11/14 - Item #10.1G - Project #5133 (500,000)  
Board Approved Reallocation - 8/11/14 - Item #10.1G - Project #5150 (700,000)  
Board Approved Reallocation - 8/11/14 - Item #10.1G - Project #5152 2,200,000
- (8) Board Approved Reallocation - 4/13/15 - Item #10.1D - Project # 5130 (555,000)  
Board Approved Reallocation - 4/13/15 - Item #10.1D - Project # 5133 (303,600)
- (9) Board Approved Reallocation - 4/25/16 - Item #9.5B - Project # 5171 (3,350,000)  
Board Approved Reallocation - 4/25/16 - Item #9.5B - Project # 5151 (5,212,104)  
Board Approved Reallocation - 4/25/16 - Item #9.5B - Project # 5188 (1,597,642)  
Board Approved Reallocation - 4/25/16 - Item #9.5B - Project # 5153 (1,478,731)  
Board Approved Reallocation - 4/25/16 - Item #9.5B - Project # 5161 (1,142,705)  
Board Approved Reallocation - 4/25/16 - Item #9.5B - Project # 5148 (1,123,100)  
Board Approved Reallocation - 4/25/16 - Item #9.5B - Project # 5147 (1,078,802)  
Board Approved Reallocation - 4/25/16 - Item #9.5B - Project # 5132 (465,382)  
Board Approved Reallocation - 4/25/16 - Item #9.5B - Project # 5145 (324,157)  
Board Approved Reallocation - 4/25/16 - Item #9.5B - Project # 5191 (270,000)  
Board Approved Reallocation - 4/25/16 - Item #9.5B - Project # 5144 (183,567)  
Board Approved Reallocation - 4/25/16 - Item #9.5B - Project # 5133 (16,245)  
Board Approved Reallocation - 4/25/16 - Item #9.5B - Project # 5130 (10,118)  
Board Approved Reallocation - 4/25/16 - Item #9.5B - Project # 5131 120,000  
Board Approved Reallocation - 4/25/16 - Item #9.5B - Project # 5150 250,000  
Board Approved Reallocation - 4/25/16 - Item #9.5B - Project # 5180 5,142,553

Project #	Revised Budget	CM Fees	Working Budget	Expenditures Inception November-20	Projected Expenses To Go as of November-20	Notes	% Construction Completed	% Expended	Anticipated Completion (mm/yy)
<b>NOTES: (cont.)</b>									
Board Approved Reallocation - 4/25/16 - Item #9.5B - Project # 5155	7,740,000								
Board Approved Reallocation - 4/25/16 - Item #9.5B - Project # 9989	3,000,000								
(10) Board Approved Reallocation - 6/27/16 - Item # 10.2D- Project # 5149	(200,000)								
Board Approved Reallocation - 6/27/16 - Item # 10.2D- Project # 5147	(450,000)								
Board Approved Reallocation - 6/27/16 - Item # 10.2D- Project # 5151	(650,000)								
Board Approved Reallocation - 6/27/16 - Item # 10.2D- Project # 5159	600,000								
Board Approved Reallocation - 6/27/16 - Item # 10.2D- Project # 9989	700,000								
(11) Board Approved Reallocation - 9/26/16 - Item # 9.2B - Project #5178	12,230,983								
Board Approved Reallocation - 9/26/16 - Item # 9.2B - Project #5174	(6,141,850)								
Board Approved Reallocation - 9/26/16 - Item # 9.2B - Project #9989	(3,700,000)								
Excess Projected Revenues	(2,389,133)								
District 8% Capacity - at future time (project # 5178)	6,600,000								
(12) Board Approved Reallocation - 12/12/16 - Item # 13.1D - Project #5131	(30,000)								
Board Approved Reallocation - 12/12/16 - Item # 13.1D - Project #5132	(605,323)								
Board Approved Reallocation - 12/12/16 - Item # 13.1D - Project #5144	(56,241)								
Board Approved Reallocation - 12/12/16 - Item # 13.1D - Project #5145	(150,000)								
Board Approved Reallocation - 12/12/16 - Item # 13.1D - Project #5147	(560,000)								
Board Approved Reallocation - 12/12/16 - Item # 13.1D - Project #5149	(285,000)								
Board Approved Reallocation - 12/12/16 - Item # 13.1D - Project #5151	(181,000)								
Board Approved Reallocation - 12/12/16 - Item # 13.1D - Project #5153	(482,000)								
Board Approved Reallocation - 12/12/16 - Item # 13.1D - Project #5180	(7,740)								
Board Approved Reallocation - 12/12/16 - Item # 13.1D - Project #5180	(479,338)								
Board Approved Reallocation - 12/12/16 - Item # 13.1D - Project #5180	(122,245)								
Board Approved Reallocation - 12/12/16 - Item # 13.1D - Project #5180	700,000								
Board Approved Reallocation - 12/12/16 - Item # 13.1D - Project #5180	850,000								
Board Approved Reallocation - 12/12/16 - Item # 13.1D - Project #5158	1,385,563								
Board Approved Reallocation - 12/12/16 - Item # 13.1D - Project #9989	23,324								
(13) Board Approved Reallocation - 4/24/17 - Item # 11.1E - Project #5147	(35,032)								
Board Approved Reallocation - 4/24/17 - Item # 11.1E - Project #5148	(39,956)								
Board Approved Reallocation - 4/24/17 - Item # 11.1E - Project #5152	(397,071)								
Board Approved Reallocation - 4/24/17 - Item # 11.1E - Project #5153	(76,082)								
Board Approved Reallocation - 4/24/17 - Item # 11.1E - Project #5154	(192,571)								
Board Approved Reallocation - 4/24/17 - Item # 11.1E - Project #5159	200,000								
Board Approved Reallocation - 4/24/17 - Item # 11.1E - Project #5180	816,770								
Board Approved Reallocation - 4/24/17 - Item # 11.1E - Project #5155	193,000								
Board Approved Reallocation - 4/24/17 - Item # 11.1E - Project #5174	1,130,942								
Board Approved Reallocation - 4/24/17 - Item # 11.1E - Project #9989	(1,600,000)								
(14) Board Approved Reallocation - 7/24/17 - Item # 7.2C - Project #5143	(456,000)								
Board Approved Reallocation - 7/24/17 - Item # 7.2C - Project #5165	(1,000,000)								
Board Approved Reallocation - 7/24/17 - Item # 7.2C - Project #5180	200,000								
Board Approved Reallocation - 7/24/17 - Item # 7.2C - Project #5155	1,256,000								
(15) Board Approved Reallocation - 1/22/18 - Item # 11.1D - Project # 5131	(2,870)								
Board Approved Reallocation - 1/22/18 - Item # 11.1D - Project # 5147	(3,443)								
Board Approved Reallocation - 1/22/18 - Item # 11.1D - Project # 5148	(30,862)								
Board Approved Reallocation - 1/22/18 - Item # 11.1D - Project # 5149	(195,582)								
Board Approved Reallocation - 1/22/18 - Item # 11.1D - Project # 5150	(78,739)								
Board Approved Reallocation - 1/22/18 - Item # 11.1D - Project # 5152	(140,967)								
Board Approved Reallocation - 1/22/18 - Item # 11.1D - Project # 5153	(60,442)								
Board Approved Reallocation - 1/22/18 - Item # 11.1D - Project # 5154	(17,866)								
Board Approved Reallocation - 1/22/18 - Item # 11.1D - Project # 5161	(220,346)								
Board Approved Reallocation - 1/22/18 - Item # 11.1D - Project # 5165	(2,464,200)								
Board Approved Reallocation - 1/22/18 - Item # 11.1D - Project # 5182	(234,935)								
Board Approved Reallocation - 1/22/18 - Item # 11.1D - Project # 5183	(220,225)								
Board Approved Reallocation - 1/22/18 - Item # 11.1D - Project # 5184	(259,285)								
Board Approved Reallocation - 1/22/18 - Item # 11.1D - Project # 5185	(154,135)								
Board Approved Reallocation - 1/22/18 - Item # 11.1D - Project # 5191	(1,575)								
Board Approved Reallocation - 1/22/18 - Item # 11.1D - Project # 5188	140,000								
Board Approved Reallocation - 1/22/18 - Item # 11.1D - Project # 5143	50,000								
Board Approved Reallocation - 1/22/18 - Item # 11.1D - Project # 5174	2,672,937								
Board Approved Reallocation - 1/22/18 - Item # 11.1D - Project # 5155	125,000								
Board Approved Reallocation - 1/22/18 - Item # 11.1D - Project # 9989	1,097,534								
(16) Board Approved Reallocation - 4/23/18 - Item # XI A1 - Project # 5178	2,500,000								
Board Approved Reallocation - 4/23/18 - Item # XI A1 - Project # 5174	(1,000,000)								
Board Approved Reallocation - 4/23/18 - Item # XI A1 - Project # 9989	(1,500,000)								

Project #	Revised Budget	CM Fees	Working Budget	Expenditures Inception November-20	Projected Expenses To Go as of November-20	Notes	% Construction Completed	% Expended	Anticipated Completion (mm/yy)
<b>NOTES: (cont.)</b>									
(17) Board Approved Reallocation - 8/27/18 - Item # 8A - Project # 5144	(26,788)								
Board Approved Reallocation - 8/27/18 - Item # 8A - Project # 5145	(33,092)								
Board Approved Reallocation - 8/27/18 - Item # 8A - Project # 5148	250,000								
Board Approved Reallocation - 8/27/18 - Item # 8A - Project # 5150	(1,178)								
Board Approved Reallocation - 8/27/18 - Item # 8A - Project # 5155	(407,118)								
Board Approved Reallocation - 8/27/18 - Item # 8A - Project # 5156	(500,000)								
Board Approved Reallocation - 8/27/18 - Item # 8A - Project # 5158	(150,619)								
Board Approved Reallocation - 8/27/18 - Item # 8A - Project # 5159	971,796								
Board Approved Reallocation - 8/27/18 - Item # 8A - Project # 5188	(113,000)								
Board Approved Reallocation - 8/27/18 - Item # 8A - Project # 5185	10,000								
(18) Board Approved Reallocation - 9/23/19 - Item # 8B - Project #5149	(31,206)								
Board Approved Reallocation - 9/23/19 - Item # 8B - Project #5151	(36,630)								
Board Approved Reallocation - 9/23/19 - Item # 8B - Project #5152	(41,856)								
Board Approved Reallocation - 9/23/19 - Item # 8B - Project #5155	(12,446)								
Board Approved Reallocation - 9/23/19 - Item # 8B - Project #5158	250,000								
Board Approved Reallocation - 9/23/19 - Item # 8B - Project #5158	(522,872)								
Board Approved Reallocation - 9/23/19 - Item # 8B - Project #5173	2,000,000								
Board Approved Reallocation - 9/23/19 - Item # 8B - Project #5174	(1,012,175)								
Board Approved Reallocation - 9/23/19 - Item # 8B - Project #5180	336,000								
Board Approved Reallocation - 9/23/19 - Item # 8B - Project #5185	(1,070)								
Board Approved Reallocation - 9/23/19 - Item # 8B - Project #9989	(927,745)								
(19) Board Approved Reallocation - 8/24/20 - Item # 7A - Project #5173	2,100,000								
Revenue - Proceeds from Sale of Archer ES	(2,100,000)								
(20) Board Approved Reallocation - 10/26/20 - Item # 9B - Project # 5143	(18,056)								
Board Approved Reallocation - 10/26/20 - Item # 9B - Project # 5148	(60,005)								
Board Approved Reallocation - 10/26/20 - Item # 9B - Project # 5151	(10,000)								
Board Approved Reallocation - 10/26/20 - Item # 9B - Project # 5155	(50,016)								
Board Approved Reallocation - 10/26/20 - Item # 9B - Project # 5156	(57,668)								
Board Approved Reallocation - 10/26/20 - Item # 9B - Project # 5159	(195,059)								
Board Approved Reallocation - 10/26/20 - Item # 9B - Project # 5174	(7,845)								

CAPITAL PROGRAM  
2017 - 2022 CAPITAL PROGRAM PHASE IV  
One Cent Sales Tax Extension  
November 30, 2020

Project #		Working Budget	Expenditures Inception November-20	Projected Expenses To Go as of November-20	Notes	% Construction Completed	Anticipated Completion (mm/yy)	% Expended
<b>CAPITAL BUILDING PROJECTS</b>								
5206	* DISTRICT 4 LAND	6,436,500	6,344,676	91,824	(6)	100%	Complete	99%
5207	* BURNS ES	24,895,559	24,833,372	62,187	(38), (41)	100%	Complete	100%
5208	* ^ C E WILLIAMS MS	50,941,734	46,877,556	4,064,178	(22), (41)	99%	Sep-20	92%
5209	* ^ NEW CAROLINA PARK ES (SEWEE ACADEMY)	37,282,141	37,266,645	15,496	(5), (38)	100%	Complete	100%
5210	* NEW CAS @ WEST ASHLEY	40,763,723	20,050,550	20,713,173		71%	Sep-21	49%
5212	* NEW LUCY GARRETT BECKHAM HS (EAST COOPER HS)	106,203,799	93,733,531	12,470,268	(22), (38), (41)	95%	Jan-22	88%
5213	* NEW CAMP ROAD MS (FT JOHNSON MS)	49,088,153	40,164,984	8,923,169	(22), (38)	99%	Sep-20	82%
5214	* JAMES SIMONS MONTESSORI SCHOOL UPFIT	2,041,164	2,041,164	0	(31)	100%	Complete	100%
5215	* MURRAY LA-SAINE MONTESSORI SCHOOL UPFIT	937,354	937,354	0	(32)	100%	Complete	100%
5216	* ^ DISTRICT 2 STADIUM	15,796,913	14,775,310	1,021,603	(16)	100%	Complete	94%
5217	* DISTRICT 4 STADIUM	21,856,086	19,958,294	1,897,792	(16)	99%	Aug-20	91%
5230	* DUNSTON ES	27,420,068	26,995,476	424,592	(8), (20), (41)	100%	Complete	98%
5231	* ST JAMES SANTEE	1,848,099	1,848,099	(0)	(41)	100%	Complete	100%
5232	* ^ MITCHELL ES	12,862,130	716,197	12,145,933	(36), (40)	8%	Aug-21	6%
5233	* HAUT GAP MS (EXPANSION)	8,923,628	492,292	8,431,336	(41)	7%	Feb-22	6%
5236	* BAPTIST HILL (CTE)	8,496,420	1,133,407	7,363,013		13%	Aug-21	13%
5237	* NEW COOPER RIVER CENTER for ADVANCED STUDIES	37,922,945	31,420,564	6,502,381	(33), (38), (41)	98%	Sep-20	83%
5238	* JAMES ISLAND CHARTER HS	20,047,733	1,425,004	18,622,729		7%	Aug-22	7%
5240	* LINCOLN HS	477,327	231,394	245,933		48%	TBD	48%
5252	* ^ MOULTRIE MS	12,640,966	10,893,068	1,747,898	(8), (22), (25), (28)	100%	Sep-19/Sep-20	86%
5268	* STONEY FIELD	4,136,915	2,117,692	2,019,223	(8), (28), (38)	50%	Aug-21	51%
5269	* HURSEY MONTESSORI SCHOOL	8,062,018	312,700	7,749,318	(8), (35), (36)	4%	N/A	4%
5241	* CMFEE - CUMMING 2017-2022 EARLY OUT	2,478,900	2,478,898	2		N/A	N/A	N/A
5297	* CMFEE - CUMMING 2017-2022 CONTRACT	19,340,939	14,710,315	4,630,624		N/A	N/A	N/A
	Adjustment to Contract (projects not started)	(136,038)	0	(136,038)		N/A	N/A	N/A
<b>Total Capital Building Projects</b>		<b>520,765,176</b>	<b>401,758,541</b>	<b>119,006,635</b>				
<b>CAPITAL MAINTENANCE PROJECTS</b>								
5270	HVAC	37,720,322	34,426,614	3,293,708	(2), (7), (9), (10), (12), (13), (14), (15), (17), (19), (21), (23), (26), (27), (30), (34), (36), (37), (39)		Dec-20	91%
5271	ROOFING	13,604,317	12,112,634	1,491,684	(1), (2), (7), (10), (14), (15), (19), (21), (23), (24), (26), (27), (30), (34), (37), (39)		Dec-20	89%
5272	PLUMBING & RESTROOMS	1,885,660	1,787,167	98,493	(2), (7), (9), (11), (14), (15), (19), (21), (23), (27), (30), (34), (37)		Dec-20	95%
5273	EXTERIOR ENCLOSURE	1,604,117	1,604,118	(0)	(2), (7), (9), (10), (14), (15), (19), (21), (26), (30)		Dec-20	100%
5274	^ PARKING LOTS & SIDEWALKS	1,496,770	1,496,770	(0)	(3), (7), (9), (10), (13), (15), (24), (26), (27), (30), (34), (37)		Dec-20	100%
5275	ELECTRICAL	720,269	675,929	44,340	(2), (3), (7), (12), (14), (15), (19), (21), (27), (34)		Dec-20	94%
5278	PAINTING	2,645,528	2,645,529	1	(2), (7), (9), (10), (12), (14), (15), (17), (21), (23), (26), (27), (30), (34), (37)		Dec-20	100%
5279	DOORS & HARDWARE	1,618,362	1,617,021	1,341	(10), (12), (14), (15), (19), (21), (23), (27), (34), (37)		Dec-20	100%
5280	ELEVATORS	79,286	79,286	0	(10)		Dec-20	100%
5281	FLOORING	1,440,725	1,440,723	2	(9), (10), (11), (13), (14), (15), (26), (30)		Dec-20	100%
5282	FIRE SPRINKLERS & ALARMS	2,443,508	2,290,812	152,696	(9), (12), (15), (19), (21), (30), (34), (37)		Dec-20	94%
5276	CMFEE - CUMMING 2017-2022 EARLY OUT	505,487	505,488	(0)	(1)	N/A	N/A	N/A
5298	CMFEE - CUMMING 2017-2022 CONTRACT	9,387,106	5,538,096	3,849,010		N/A	N/A	N/A
	Adjustment to Contract (projects not started)	(4,030,700)	0	(4,030,700)		N/A	N/A	N/A
5246	FM PROJECT MANAGEMENT	3,155,682	2,685,119	470,563	(10), (17), (23)	N/A	N/A	85%
<b>Total Capital Maintenance Projects</b>		<b>74,276,438</b>	<b>68,905,304</b>	<b>5,371,138</b>				
<b>TECHNOLOGY REPLACEMENTS &amp; UPGRADES PROJECTS</b>								
5285	TECHNOLOGY INFRASTRUCTURE	3,124,000	2,990,283	133,717			Dec-20	96%
5286	CLASSROOM DISPLAY SOFTWARE REPLACEMENTS	270,000	233,082	36,918			Dec-20	86%
5287	PROJECTOR/BULB REPLACEMENT	50,000	42,188	7,812			Dec-20	84%
5288	DOCUMENT CAMERA REPLACEMENTS	40,000	36,325	3,675			Dec-20	91%
5289	CLASSROOM DISPLAY TECHNOLOGY REPLACEMENTS	12,136,349	8,284,748	3,851,601	(29)		Dec-20	68%
5290	REPLACE END OF LIFE PRINTERS	300,000	133,333	166,667			Dec-20	44%
5292	STUDENT MOBILE DEVICES-UPGRADES & REPLACEMENTS	4,048,279	1,119,498	2,928,781	(29)		Dec-20	28%
5293	TECHNOLOGY BACKFILL	330,000	287,182	42,818			Dec-20	87%
5294	TECH PROJECT MANAGEMENT	1,077,531	388,584	688,947			Dec-20	36%
5295	PROJECT CONTINGENCY	174,466	0	174,466			Dec-20	0%
<b>Total Technology Replacements &amp; Upgrades Projects</b>		<b>21,550,625</b>	<b>13,515,224</b>	<b>8,035,401</b>				
<b>TOTAL CAPITAL PROJECTS</b>		<b>616,592,239</b>	<b>484,179,068</b>	<b>132,413,174</b>				

Project #		Working Budget	Expenditures Inception November-20	Projected Expenses To Go as of November-20	Notes	% Construction Completed	Anticipated Completion (mm/yy)	% Expended
<b>PROGRAM CONTINGENCY / MANAGEMENT</b>								
5242	PROGRAM MANAGEMENT OFFICE (PMO)	2,732,012	2,087,688	644,324				
5243	CAPITAL PROJECTS ACCOUNTING	996,967	749,152	247,816				
5244	CONSTRUCTION PROCUREMENT	760,493	617,346	143,146				
5245	IT PROJECT MANAGEMENT	1,359,614	1,074,708	284,906				
5599	BOND FUND ADMIN	656,019	629,018	27,001				
9971	PROGRAM CONTINGENCY - BAN - FUND #584	17,478	0	17,478				
9970	PROGRAM CONTINGENCY - BAN - FUND #585	5,866,660	0	5,866,660	(7), (30)			
<b>Total Program Contingency / Management</b>		<b>12,389,244</b>	<b>5,157,913</b>	<b>7,231,331</b>				
<b>TOTAL 2017 - 2022 CAPITAL PROGRAM</b>		<b>628,981,483</b>	<b>489,336,981</b>	<b>139,644,505</b>				

\* Board Approved Early Out Funding: \$24.5M BAN2015 (\$22.5M Capital Building; \$2M Capital Maintenance). Authorized budgets loaded

\* Board Approved Early Out Funding: \$32.7M BAN2016 (\$29.2M Capital Building; \$3,437,217M Capital Maintenance; \$62,783 Program Contingency). Authorized budgets loaded

^ District 2 Stadium, \$6,040,827; Carolina Park ES, \$253,832; Moultrie MS, \$1,200,000; CE Williams MS, \$659,000; Mitchell ES, \$1,883,610; Parking Lots & Sidewalks, \$147,931 - non-OCST funding source

**NOTES:**

(1)	Board Approved Reallocation - 5/11/15 - Item #10.1D - Project # 5271	550,000
	Board Approved Reallocation - 5/11/15 - Item #10.1D - Project # 5276	173,600
	Board Approved Reallocation - 5/11/15 - Item #10.1D - Project # 9970	(723,600)
(2)	Board Approved Reallocation - 11/9/15 - Item #9.2A - Project # 5270	(217,678)
	Board Approved Reallocation - 11/9/15 - Item #9.2A - Project # 5270	483,547
	Board Approved Reallocation - 11/9/15 - Item #9.2A - Project # 5271	(317,852)
	Board Approved Reallocation - 11/9/15 - Item #9.2A - Project # 5272	(2,700)
	Board Approved Reallocation - 11/9/15 - Item #9.2A - Project # 5273	(98,601)
	Board Approved Reallocation - 11/9/15 - Item #9.2A - Project # 5275	45,000
	Board Approved Reallocation - 11/9/15 - Item #9.2A - Project # 5278	108,284
(3)	Board Approved Reallocation - 2/22/16 - Item #9.5 K - Project # 5274	
	- Reallocation of funds (\$163,120) within in the project	
	Board Approved Reallocation - 2/22/16 - Item #9.5 K - Project # 5275	
	- Reallocation of funds (\$35,001) within in the project	
(4)	Board Approved Name change to Lucy Beckham HS - 2/22/16 - Item #9.4 M	
(5)	Board Approved Name change to Carolina Park ES - 2/22/16 - Item #9.4 N	
(6)	Board Approved Name change to Deer Park MS - 3/21/16 - Item #9.4 D	
(7)	Board Approved Reallocation - 7/11/16 - Item #8.1 - Project # 5270	(35,713)
	Board Approved Reallocation - 7/11/16 - Item #8.1 - Project # 5271	(300)
	Board Approved Reallocation - 7/11/16 - Item #8.1 - Project # 5272	(755)
	Board Approved Reallocation - 7/11/16 - Item #8.1 - Project # 5273	(1,200)
	Board Approved Reallocation - 7/11/16 - Item #8.1 - Project # 5274	(2,161)
	Board Approved Reallocation - 7/11/16 - Item #8.1 - Project # 5275	(5,116)
	Board Approved Reallocation - 7/11/16 - Item #8.1 - Project # 5278	(7,484)
	Board Approved Reallocation - 7/11/16 - Item #8.1 - Project # 9970	(1,993)
	Board Approved Reallocation - 7/11/16 - Item #8.1 - Project # 5272	54,722
(8)	Board Approved Reallocation - 8/22/16 - Item #9.3 - Project # 5212	12,200,000
	Board Approved Reallocation - 8/22/16 - Item #9.3 - Project # 5230	2,100,000
	Board Approved Reallocation - 8/22/16 - Item #9.3 - Project # 5269	5,000,000
	Board Approved Reallocation - 8/22/16 - Item #9.3 - Project # 5252	7,780,000
	Board Approved Reallocation - 8/22/16 - Item #9.3 - Project # 5268	1,000,000
	Excess Projected Revenues	(28,080,000)
(9)	Board Approved Reallocation - 10/24/16 - Item #9.4A - Project # 5270	(167,473)
	Board Approved Reallocation - 10/24/16 - Item #9.4A - Project # 5278	(144,637)
	Board Approved Reallocation - 10/24/16 - Item #9.4A - Project # 5270	10,000
	Board Approved Reallocation - 10/24/16 - Item #9.4A - Project # 5270	10,000
	Board Approved Reallocation - 10/24/16 - Item #9.4A - Project # 5272	27,473
	Board Approved Reallocation - 10/24/16 - Item #9.4A - Project # 5272	60,000
	Board Approved Reallocation - 10/24/16 - Item #9.4A - Project # 5273	20,000
	Board Approved Reallocation - 10/24/16 - Item #9.4A - Project # 5274	18,637
	Board Approved Reallocation - 10/24/16 - Item #9.4A - Project # 5274	70,000
	Board Approved Reallocation - 10/24/16 - Item #9.4A - Project # 5278	15,000
	Board Approved Reallocation - 10/24/16 - Item #9.4A - Project # 5278	30,000
	Board Approved Reallocation - 10/24/16 - Item #9.4A - Project # 5281	40,000
	Board Approved Reallocation - 10/24/16 - Item #9.4A - Project # 5282	11,000
(10)	Board Approved Reallocation - 1/23/17 - Item # 9.1E - Project # 5270	(28,000)
	Board Approved Reallocation - 1/23/17 - Item # 9.1E - Project # 5273	(23,624)
	Board Approved Reallocation - 1/23/17 - Item # 9.1E - Project # 5273	(6,576)
	Board Approved Reallocation - 1/23/17 - Item # 9.1E - Project # 5273	(7,310)
	Board Approved Reallocation - 1/23/17 - Item # 9.1E - Project # 5273	(20,000)

Project #	Working Budget	Expenditures Inception November-20	Projected Expenses To Go as of November-20	Notes	% Construction Completed	Anticipated Completion (mm/yy)	% Expended
NOTES: (cont.)							
	Board Approved Reallocation - 1/23/17 - Item # 9.1E - Project # 5278	(3,300)					
	Board Approved Reallocation - 1/23/17 - Item # 9.1E - Project # 5278	(12,500)					
	Board Approved Reallocation - 1/23/17 - Item # 9.1E - Project # 5278	(53,000)					
	Board Approved Reallocation - 1/23/17 - Item # 9.1E - Project # 5279	(21,685)					
	Board Approved Reallocation - 1/23/17 - Item # 9.1E - Project # 5280	(7,055)					
	Board Approved Reallocation - 1/23/17 - Item # 9.1E - Project # 5281	(8,647)					
	Board Approved Reallocation - 1/23/17 - Item # 9.1E - Project # 5281	(325)					
	Board Approved Reallocation - 1/23/17 - Item # 9.1E - Project # 5270	147,423					
	Board Approved Reallocation - 1/23/17 - Item # 9.1E - Project # 5270	6,600					
	Board Approved Reallocation - 1/23/17 - Item # 9.1E - Project # 5271	5,500					
	Board Approved Reallocation - 1/23/17 - Item # 9.1E - Project # 5271	5,500					
	Board Approved Reallocation - 1/23/17 - Item # 9.1E - Project # 5274	25,000					
	Board Approved Reallocation - 1/23/17 - Item # 9.1E - Project # 5246	2,000					
(11)	Board Approved Reallocation - 2/27/17 - Item # 8.1C - Project # 5281	(324)					
	Board Approved Reallocation - 2/27/17 - Item # 8.1C - Project # 5281	(1,750)					
	Board Approved Reallocation - 2/27/17 - Item # 8.1C - Project # 5281	(11,960)					
	Board Approved Reallocation - 2/27/17 - Item # 8.1C - Project # 5272	14,034					
(12)	Board Approved Reallocation - 6/26/17 - Item # 10.1F - Project # 5270	(496,560)					
	Board Approved Reallocation - 6/26/17 - Item # 10.1F - Project # 5282	35,000					
	Board Approved Reallocation - 6/26/17 - Item # 10.1F - Project # 5282	140,000					
	Board Approved Reallocation - 6/26/17 - Item # 10.1F - Project # 5282	50,000					
	Board Approved Reallocation - 6/26/17 - Item # 10.1F - Project # 5282	40,000					
	Board Approved Reallocation - 6/26/17 - Item # 10.1F - Project # 5278	110,000					
	Board Approved Reallocation - 6/26/17 - Item # 10.1F - Project # 5275	19,560					
	Board Approved Reallocation - 6/26/17 - Item # 10.1F - Project # 5279	42,000					
	Board Approved Reallocation - 6/26/17 - Item # 10.1F - Project # 5279	60,000					
(13)	Board Approved Reallocation - 10/23/17 - Item # 9.3B - Project # 5270	(305,000)					
	Board Approved Reallocation - 10/23/17 - Item # 9.3B - Project # 5274	215,000					
	Board Approved Reallocation - 10/23/17 - Item # 9.3B - Project # 5281	90,000					
(14)	Board Approved Reallocation - 11/27/17 - Item # 11.3 - Project # 5270	(378,000)					
	Board Approved Reallocation - 11/27/17 - Item # 11.3 - Project # 5271	(71,000)					
	Board Approved Reallocation - 11/27/17 - Item # 11.3 - Project # 5272	(34,663)					
	Board Approved Reallocation - 11/27/17 - Item # 11.3 - Project # 5275	(200,000)					
	Board Approved Reallocation - 11/27/17 - Item # 11.3 - Project # 5278	(12,319)					
	Board Approved Reallocation - 11/27/17 - Item # 11.3 - Project # 5279	(5,000)					
	Board Approved Reallocation - 11/27/17 - Item # 11.3 - Project # 5281	(11,222)					
	Board Approved Reallocation - 11/27/17 - Item # 11.3 - Project # 5271	387,204					
	Board Approved Reallocation - 11/27/17 - Item # 11.3 - Project # 5273	204,000					
	Board Approved Reallocation - 11/27/17 - Item # 11.3 - Project # 5278	33,000					
	Board Approved Reallocation - 11/27/17 - Item # 11.3 - Project # 5281	88,000					
(15)	Board Approved Reallocation - 1/22/18 - Item # 11.1E - Project # 5271	(11,507)					
	Board Approved Reallocation - 1/22/18 - Item # 11.1E - Project # 5272	(40,000)					
	Board Approved Reallocation - 1/22/18 - Item # 11.1E - Project # 5272	(301)					
	Board Approved Reallocation - 1/22/18 - Item # 11.1E - Project # 5273	(8,007)					
	Board Approved Reallocation - 1/22/18 - Item # 11.1E - Project # 5274	(1,620)					
	Board Approved Reallocation - 1/22/18 - Item # 11.1E - Project # 5275	(20,134)					
	Board Approved Reallocation - 1/22/18 - Item # 11.1E - Project # 5275	(1,560)					
	Board Approved Reallocation - 1/22/18 - Item # 11.1E - Project # 5278	(14,275)					
	Board Approved Reallocation - 1/22/18 - Item # 11.1E - Project # 5279	(18,000)					
	Board Approved Reallocation - 1/22/18 - Item # 11.1E - Project # 5279	(7,000)					
	Board Approved Reallocation - 1/22/18 - Item # 11.1E - Project # 5281	(16,597)					
	Board Approved Reallocation - 1/22/18 - Item # 11.1E - Project # 5281	(17,000)					
	Board Approved Reallocation - 1/22/18 - Item # 11.1E - Project # 5281	(21,000)					
	Board Approved Reallocation - 1/22/18 - Item # 11.1E - Project # 5281	(50,000)					
	Board Approved Reallocation - 1/22/18 - Item # 11.1E - Project # 5282	(33,000)					
	Board Approved Reallocation - 1/22/18 - Item # 11.1E - Project # 5282	(6,512)					
	Board Approved Reallocation - 1/22/18 - Item # 11.1E - Project # 5282	(33,750)					
	Board Approved Reallocation - 1/22/18 - Item # 11.1E - Project # 5282	(44,869)					
	Board Approved Reallocation - 1/22/18 - Item # 11.1E - Project # 5270	345,132					
(16)	Board Approved Reallocation - 2/26/18 - Item # 8.1C - Project # 5216	2,300,000					
	Board Approved Reallocation - 2/26/18 - Item # 8.1C - Project # 5217	8,300,000					
	Excess Projected Revenues	(10,600,000)					
(17)	Board Approved Reallocation - 2/26/18 - Item # 8.1D - Project # 5246	(340,000)					
	Board Approved Reallocation - 2/26/18 - Item # 8.1D - Project # 5278	130,000					
	Board Approved Reallocation - 2/26/18 - Item # 8.1D - Project # 5270	210,000					
(18)	Board Approved Reallocation - 4/23/18 - Item # XI A2 - Project # 5209	(1,585,691)					
	Board Approved Reallocation - 4/23/18 - Item # XI A2 - Project # 5214	(333,836)					
	Board Approved Reallocation - 4/23/18 - Item # XI A2 - Project # 5215	(16,646)					
	Board Approved Reallocation - 4/23/18 - Item # XI A2 - Project # 5231	(529,314)					
	Board Approved Reallocation - 4/23/18 - Item # XI A2 - Project # 5207	2,465,487					

Project #	Working Budget	Expenditures Inception November-20	Projected Expenses To Go as of November-20	Notes	% Construction Completed	Anticipated Completion (mm/yy)	% Expended
NOTES: (cont.)							
(19) Board Approved Reallocation - 5/21/18 - Item # VI B1 - Project # 5271	(400)						
Board Approved Reallocation - 5/21/18 - Item # VI B1 - Project # 5271	(43,704)						
Board Approved Reallocation - 5/21/18 - Item # VI B1 - Project # 5271	(163,314)						
Board Approved Reallocation - 5/21/18 - Item # VI B1 - Project # 5271	(379)						
Board Approved Reallocation - 5/21/18 - Item # VI B1 - Project # 5271	(176,909)						
Board Approved Reallocation - 5/21/18 - Item # VI B1 - Project # 5272	(20,000)						
Board Approved Reallocation - 5/21/18 - Item # VI B1 - Project # 5272	(233)						
Board Approved Reallocation - 5/21/18 - Item # VI B1 - Project # 5275	(25)						
Board Approved Reallocation - 5/21/18 - Item # VI B1 - Project # 5279	(6,045)						
Board Approved Reallocation - 5/21/18 - Item # VI B1 - Project # 5282	(3,122)						
Board Approved Reallocation - 5/21/18 - Item # VI B1 - Project # 5282	(14,742)						
Board Approved Reallocation - 5/21/18 - Item # VI B1 - Project # 5270	200,924						
Board Approved Reallocation - 5/21/18 - Item # VI B1 - Project # 5273	227,948						
(20) Board Approved Reallocation - 6/11/18 - Item # VI A - Project # 5230	4,930,808						
Excess Projected Revenues	(4,930,808)						
(21) Board Approved Reallocation - 7/16/18 - Item # VI A1 - Project # 5270	(27,000)						
Board Approved Reallocation - 7/16/18 - Item # VI A1 - Project # 5270	(130,000)						
Board Approved Reallocation - 7/16/18 - Item # VI A1 - Project # 5270	(318,234)						
Board Approved Reallocation - 7/16/18 - Item # VI A1 - Project # 5271	(45,000)						
Board Approved Reallocation - 7/16/18 - Item # VI A1 - Project # 5273	(26,411)						
Board Approved Reallocation - 7/16/18 - Item # VI A1 - Project # 5273	(5,847)						
Board Approved Reallocation - 7/16/18 - Item # VI A1 - Project # 5275	(10,266)						
Board Approved Reallocation - 7/16/18 - Item # VI A1 - Project # 5279	(500)						
Board Approved Reallocation - 7/16/18 - Item # VI A1 - Project # 5279	(7,182)						
Board Approved Reallocation - 7/16/18 - Item # VI A1 - Project # 5279	(5,000)						
Board Approved Reallocation - 7/16/18 - Item # VI A1 - Project # 5279	(10,000)						
Board Approved Reallocation - 7/16/18 - Item # VI A1 - Project # 5278	27,500						
Board Approved Reallocation - 7/16/18 - Item # VI A1 - Project # 5278	247,940						
Board Approved Reallocation - 7/16/18 - Item # VI A1 - Project # 5282	250,000						
Board Approved Reallocation - 7/16/18 - Item # VI A1 - Project # 5272	60,000						
(22) Board Approved Reallocation - 7/16/18 - Item # VI A2 - Project # 5212	9,712,578						
Board Approved Reallocation - 7/16/18 - Item # VI A2 - Project # 5208	9,100,000						
Board Approved Reallocation - 7/16/18 - Item # VI A2 - Project # 5213	9,000,000						
Board Approved Reallocation - 7/16/18 - Item # VI A2 - Project # 5252	1,104,521						
Excess Projected Revenues	(28,917,099)						
(23) Board Approved Reallocation - 8/27/18 - Item # 8B - Project # 5271	(20,000)						
Board Approved Reallocation - 8/27/18 - Item # 8B - Project # 5271	(40,000)						
Board Approved Reallocation - 8/27/18 - Item # 8B - Project # 5271	(26,371)						
Board Approved Reallocation - 8/27/18 - Item # 8B - Project # 5271	(95,132)						
Board Approved Reallocation - 8/27/18 - Item # 8B - Project # 5271	(17,856)						
Board Approved Reallocation - 8/27/18 - Item # 8B - Project # 5272	(15,779)						
Board Approved Reallocation - 8/27/18 - Item # 8B - Project # 5278	(11,500)						
Board Approved Reallocation - 8/27/18 - Item # 8B - Project # 5278	(3)						
Board Approved Reallocation - 8/27/18 - Item # 8B - Project # 5278	(22,714)						
Board Approved Reallocation - 8/27/18 - Item # 8B - Project # 5278	(1,150)						
Board Approved Reallocation - 8/27/18 - Item # 8B - Project # 5278	(1,684)						
Board Approved Reallocation - 8/27/18 - Item # 8B - Project # 5278	(3,722)						
Board Approved Reallocation - 8/27/18 - Item # 8B - Project # 5278	(2,287)						
Board Approved Reallocation - 8/27/18 - Item # 8B - Project # 5278	(1,215)						
Board Approved Reallocation - 8/27/18 - Item # 8B - Project # 5278	(1,150)						
Board Approved Reallocation - 8/27/18 - Item # 8B - Project # 5279	(70,000)						
Board Approved Reallocation - 8/27/18 - Item # 8B - Project # 5246	(11,883)						
Board Approved Reallocation - 8/27/18 - Item # 8B - Project # 5270	342,447						
(24) Board Approved Reallocation - 8/27/18 - Item # 8C - Project # 5271	(150,000)						
Board Approved Reallocation - 8/27/18 - Item # 8C - Project # 5274	150,000						
(25) Board Approved Reallocation - 9/24/18 - Item # 7A - Project # 5252	1,200,000						
Revenue - Sales of Old Laing MS	(993,507)						
Revenue - Town of Mt Pleasant (Coleman Blvd)	(206,493)						
(26) Board Approved Reallocation - 10/22/18 - Item # 9B - Project # 5278	(11,136)						
Board Approved Reallocation - 10/22/18 - Item # 9B - Project # 5273	(103)						
Board Approved Reallocation - 10/22/18 - Item # 9B - Project # 5270	(78,646)						
Board Approved Reallocation - 10/22/18 - Item # 9B - Project # 5271	(2,146)						
Board Approved Reallocation - 10/22/18 - Item # 9B - Project # 5271	(9,740)						
Board Approved Reallocation - 10/22/18 - Item # 9B - Project # 5271	(1,782)						
Board Approved Reallocation - 10/22/18 - Item # 9B - Project # 5278	(21,000)						
Board Approved Reallocation - 10/22/18 - Item # 9B - Project # 5274	103,553						
Board Approved Reallocation - 10/22/18 - Item # 9B - Project # 5281	21,000						
(27) Board Approved Reallocation - 11/26/18 - Item # 10B - Project # 5274	(66,442)						
Board Approved Reallocation - 11/26/18 - Item # 10B - Project # 5271	(160,977)						
Board Approved Reallocation - 11/26/18 - Item # 10B - Project # 5278	(9,478)						
Board Approved Reallocation - 11/26/18 - Item # 10B - Project # 5278	(32,934)						

Project #	Working Budget	Expenditures Inception November-20	Projected Expenses To Go as of November-20	Notes	% Construction Completed	Anticipated Completion (mm/yy)	% Expended
NOTES: (cont.)							
	Board Approved Reallocation - 11/26/18 - Item # 10B - Project # 5278	(8,318)					
	Board Approved Reallocation - 11/26/18 - Item # 10B - Project # 5278	(25,958)					
	Board Approved Reallocation - 11/26/18 - Item # 10B - Project # 5278	(84,781)					
	Board Approved Reallocation - 11/26/18 - Item # 10B - Project # 5279	(8,278)					
	Board Approved Reallocation - 11/26/18 - Item # 10B - Project # 5279	(5,781)					
	Board Approved Reallocation - 11/26/18 - Item # 10B - Project # 5270	190,000					
	Board Approved Reallocation - 11/26/18 - Item # 10B - Project # 5270	167,210					
	Board Approved Reallocation - 11/26/18 - Item # 10B - Project # 5270	716					
	Board Approved Reallocation - 11/26/18 - Item # 10B - Project # 5272	26,421					
	Board Approved Reallocation - 11/26/18 - Item # 10B - Project # 5275	6,200					
	Board Approved Reallocation - 11/26/18 - Item # 10B - Project # 5275	6,200					
	Board Approved Reallocation - 11/26/18 - Item # 10B - Project # 5275	6,200					
(28)	Board Approved Reallocation - 2/25/19 - Item # 12D - Project # 5252	3,100,000					
	Board Approved Reallocation - 2/25/19 - Item # 12D - Project # 5268	3,100,000					
	Excess Projected Revenues	(6,200,000)					
(29)	Board Approved Reallocation - 5/28/19 - Item # 12D - Project # 5289	1,432,000					
	Board Approved Reallocation - 5/28/19 - Item # 12D - Project # 5292	(1,432,000)					
(30)	Board Approved Reallocation - 5/28/19 - Item # 12E - Project # 5278	(319)					
	Board Approved Reallocation - 5/28/19 - Item # 12E - Project # 5279	(4,920)					
	Board Approved Reallocation - 5/28/19 - Item # 12E - Project # 5280	(24,287)					
	Board Approved Reallocation - 5/28/19 - Item # 12E - Project # 5281	(309)					
	Board Approved Reallocation - 5/28/19 - Item # 12E - Project # 5282	(12,290)					
	Board Approved Reallocation - 5/28/19 - Item # 12E - Project # 5281	(10,220)					
	Board Approved Reallocation - 5/28/19 - Item # 12E - Project # 5271	(15,000)					
	Board Approved Reallocation - 5/28/19 - Item # 12E - Project # 5271	(6,000)					
	Board Approved Reallocation - 5/28/19 - Item # 12E - Project # 5282	(65,934)					
	Board Approved Reallocation - 5/28/19 - Item # 12E - Project # 5282	(50)					
	Board Approved Reallocation - 5/28/19 - Item # 12E - Project # 5282	(40)					
	Board Approved Reallocation - 5/28/19 - Item # 12E - Project # 5282	(40)					
	Board Approved Reallocation - 5/28/19 - Item # 12E - Project # 5282	(50)					
	Board Approved Reallocation - 5/28/19 - Item # 12E - Project # 5282	(16,073)					
	Board Approved Reallocation - 5/28/19 - Item # 12E - Project # 5274	(27,479)					
	Board Approved Reallocation - 5/28/19 - Item # 12E - Project # 5270	(5,623)					
	Board Approved Reallocation - 5/28/19 - Item # 12E - Project # 5270	(101,729)					
	Board Approved Reallocation - 5/28/19 - Item # 12E - Project # 5271	156,536					
	Board Approved Reallocation - 5/28/19 - Item # 12E - Project # 5270	26,431					
	Board Approved Reallocation - 5/28/19 - Item # 12E - Project # 5270	50,000					
	Board Approved Reallocation - 5/28/19 - Item # 12E - Project # 5272	57,352					
	Board Approved Reallocation - 5/28/19 - Item # 12E - Project # 5273	(1)					
	Board Approved Reallocation - 5/28/19 - Item # 12E - Project # 5274	(15)					
	Board Approved Reallocation - 5/28/19 - Item # 12E - Project # 5274	(10)					
	Board Approved Reallocation - 5/28/19 - Item # 12E - Project # 9970	69					
(31)	Board Approved Name change to James Simons Montessori School - 9/23/19 - Item #11A						
(32)	Board Approved Name change to Murray-LaSaine Montessori School - 9/23/19 - Item #11B						
(33)	Board Approved Name change to Cooper River Institute of Technology - 11/18/19 - Item #7D						
(34)	Board Approved Reallocation - 11/28/19 - Item # 8A - Project # 5270	(170,000)					
	Board Approved Reallocation - 11/28/19 - Item # 8A - Project # 5270	(74,612)					
	Board Approved Reallocation - 11/28/19 - Item # 8A - Project # 5270	(15,000)					
	Board Approved Reallocation - 11/28/19 - Item # 8A - Project # 5270	(18,288)					
	Board Approved Reallocation - 11/28/19 - Item # 8A - Project # 5270	(86,415)					
	Board Approved Reallocation - 11/28/19 - Item # 8A - Project # 5270	(41,396)					
	Board Approved Reallocation - 11/28/19 - Item # 8A - Project # 5270	(107)					
	Board Approved Reallocation - 11/28/19 - Item # 8A - Project # 5270	(12,931)					
	Board Approved Reallocation - 11/28/19 - Item # 8A - Project # 5270	(10,053)					
	Board Approved Reallocation - 11/28/19 - Item # 8A - Project # 5270	(12,265)					
	Board Approved Reallocation - 11/28/19 - Item # 8A - Project # 5275	(56,514)					
	Board Approved Reallocation - 11/28/19 - Item # 8A - Project # 5275	(56,364)					
	Board Approved Reallocation - 11/28/19 - Item # 8A - Project # 5272	(25,227)					
	Board Approved Reallocation - 11/28/19 - Item # 8A - Project # 5272	(329)					
	Board Approved Reallocation - 11/28/19 - Item # 8A - Project # 5272	(938)					
	Board Approved Reallocation - 11/28/19 - Item # 8A - Project # 5272	(70)					
	Board Approved Reallocation - 11/28/19 - Item # 8A - Project # 5278	(1,176)					
	Board Approved Reallocation - 11/28/19 - Item # 8A - Project # 5278	(1,220)					
	Board Approved Reallocation - 11/28/19 - Item # 8A - Project # 5274	(35,513)					
	Board Approved Reallocation - 11/28/19 - Item # 8A - Project # 5274	(5,392)					
	Board Approved Reallocation - 11/28/19 - Item # 8A - Project # 5274	(342)					
	Board Approved Reallocation - 11/28/19 - Item # 8A - Project # 5271	(123,848)					
	Board Approved Reallocation - 11/28/19 - Item # 8A - Project # 5271	(112,327)					
	Board Approved Reallocation - 11/28/19 - Item # 8A - Project # 5271	(42,264)					
	Board Approved Reallocation - 11/28/19 - Item # 8A - Project # 5282	(149)					
	Board Approved Reallocation - 11/28/19 - Item # 8A - Project # 5282	(3,582)					
	Board Approved Reallocation - 11/28/19 - Item # 8A - Project # 5282	(51,838)					

Project #	Working Budget	Expenditures Inception November-20	Projected Expenses To Go as of November-20	Notes	% Construction Completed	Anticipated Completion (mm/yy)	% Expended
<b>NOTES: (cont.)</b>							
Board Approved Reallocation - 11/28/19 - Item # 8A - Project # 5279	(1,428)						
Board Approved Reallocation - 11/28/19 - Item # 8A - Project # 5279	(3,700)						
Board Approved Reallocation - 11/28/19 - Item # 8A - Project # 5279	(500)						
Board Approved Reallocation - 11/28/19 - Item # 8A - Project # 5279	(10,000)						
Board Approved Reallocation - 11/28/19 - Item # 8A - Project # 5279	(52,739)						
Board Approved Reallocation - 11/28/19 - Item # 8A - Project # 5270	260,000						
Board Approved Reallocation - 11/28/19 - Item # 8A - Project # 5270	42,900						
Board Approved Reallocation - 11/28/19 - Item # 8A - Project # 5270	90,000						
Board Approved Reallocation - 11/28/19 - Item # 8A - Project # 5270	56,364						
Board Approved Reallocation - 11/28/19 - Item # 8A - Project # 5275	369,486						
Board Approved Reallocation - 11/28/19 - Item # 8A - Project # 5272	10,000						
Board Approved Reallocation - 11/28/19 - Item # 8A - Project # 5272	15,000						
Board Approved Reallocation - 11/28/19 - Item # 8A - Project # 5271	2,500						
Board Approved Reallocation - 11/28/19 - Item # 8A - Project # 5282	133,500						
Board Approved Reallocation - 11/28/19 - Item # 8A - Project # 5279	20,000						
Board Approved Reallocation - 11/28/19 - Item # 8A - Project # 5279	529						
Board Approved Reallocation - 11/28/19 - Item # 8A - Project # 5279	1,447						
Board Approved Reallocation - 11/28/19 - Item # 8A - Project # 5274	24,801						
(35) Board Approved Name change to Malcolm C. Hursey Montessori School - 10/28/19 - Item #12F							
(36) Board Approved Reallocation - 12/16/19 - Item # 10F - Project # 5269	3,200,000						
Board Approved Reallocation - 12/16/19 - Item # 10F - Project # 5232	3,600,000						
Board Approved Reallocation - 12/16/19 - Item # 10F - Project # 5270	1,783,619						
Board Approved Reallocation - 12/16/19 - Item # 10F - Project # 5270	2,000,000						
Board Approved Reallocation - 12/16/19 - Item # 10F - Project # 5270	4,216,381						
Excess Projected Revenues	(14,800,000)						
(37) Board Approved Reallocation - 3/23/20 - Item # 6B - Project # 5271	(1,250)						
Board Approved Reallocation - 3/23/20 - Item # 6B - Project # 5271	(1,250)						
Board Approved Reallocation - 3/23/20 - Item # 6B - Project # 5271	(1,875)						
Board Approved Reallocation - 3/23/20 - Item # 6B - Project # 5271	(6,650)						
Board Approved Reallocation - 3/23/20 - Item # 6B - Project # 5274	(9,221)						
Board Approved Reallocation - 3/23/20 - Item # 6B - Project # 5278	(3,625)						
Board Approved Reallocation - 3/23/20 - Item # 6B - Project # 5282	(1,358)						
Board Approved Reallocation - 3/23/20 - Item # 6B - Project # 5270	(19,134)						
Board Approved Reallocation - 3/23/20 - Item # 6B - Project # 5270	(9,923)						
Board Approved Reallocation - 3/23/20 - Item # 6B - Project # 5279	(1,785)						
Board Approved Reallocation - 3/23/20 - Item # 6B - Project # 5279	(150)						
Board Approved Reallocation - 3/23/20 - Item # 6B - Project # 5279	(1,814)						
Board Approved Reallocation - 3/23/20 - Item # 6B - Project # 5279	(1,590)						
Board Approved Reallocation - 3/23/20 - Item # 6B - Project # 5272	(2,140)						
Board Approved Reallocation - 3/23/20 - Item # 6B - Project # 5270	51,765						
Board Approved Reallocation - 3/23/20 - Item # 6B - Project # 5270	10,000						
(38) Board Approved Reallocation - 4/27/20 - Item # 8D - Project # 5209	(500,000)						
Board Approved Reallocation - 4/27/20 - Item # 8D - Project # 5207	(1,700,000)						
Board Approved Reallocation - 4/27/20 - Item # 8D - Project # 5213	(961,967)						
Board Approved Reallocation - 4/27/20 - Item # 8D - Project # 5237	(2,000,000)						
Board Approved Reallocation - 4/27/20 - Item # 8D - Project # 5212	4,754,967						
Board Approved Reallocation - 4/27/20 - Item # 8D - Project # 5268	407,000						
(39) Board Approved Reallocation - 6/22/20 - Item # 7C - Project # 5270	(675,000)						
Board Approved Reallocation - 6/22/20 - Item # 7C - Project # 5271	675,000						
(40) Board Approved Reallocation - 10/26/20 - Item # 9C - Project # 5232	1,883,610						
Revenue - Proceeds from Sale of Archer ES	(1,883,610)						
(41) Board Approved Reallocation - 10/26/20 - Item # 9D - Project # 5207	(500,000)						
Board Approved Reallocation - 10/26/20 - Item # 9D - Project # 5208	(1,000,000)						
Board Approved Reallocation - 10/26/20 - Item # 9D - Project # 5230	(1,000,000)						



**pfm**

# **Phase IV (2017-2022) Capital Program**

## **Citizens Oversight Steering Committee II**

**February 3, 2021**

---

PFM Financial Advisors  
LLC

---

300 S. Orange Ave.  
Suite 1170  
Orlando, FL 32801

---

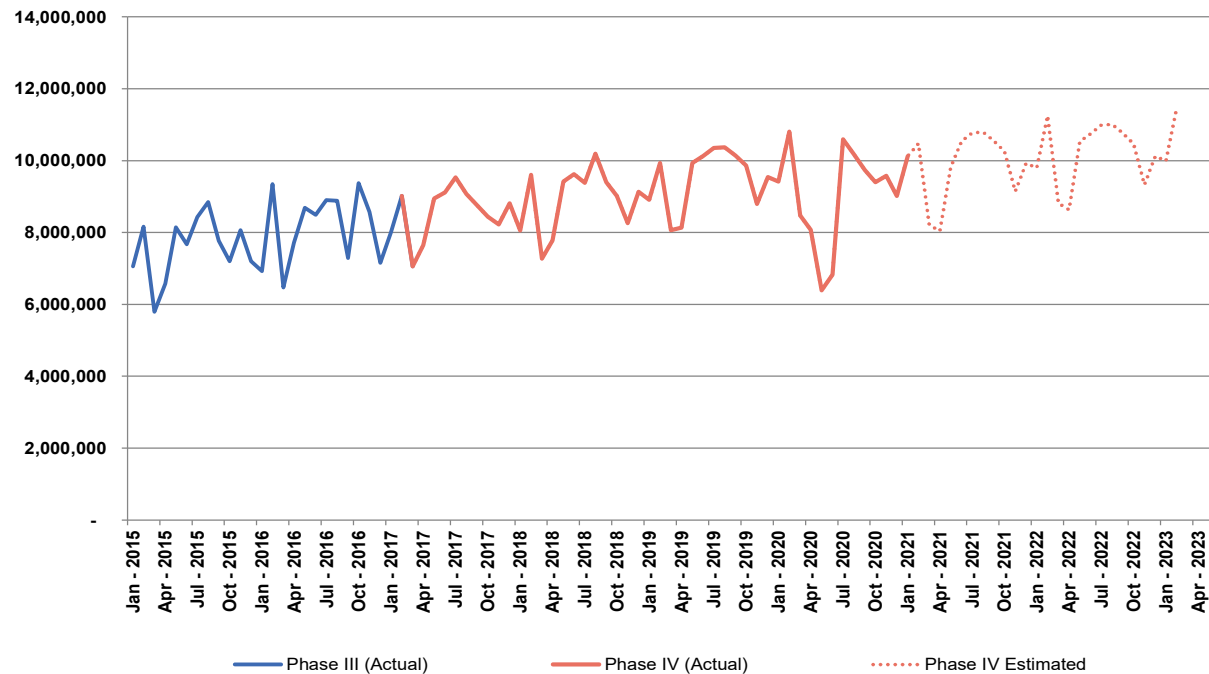
407.648.2208  
**pfm.com**



## Sales Tax Revenue Scenario

■ In order to assess the potential impact of COVID-19 on the Sales Tax program, PFM developed a scenario based on:

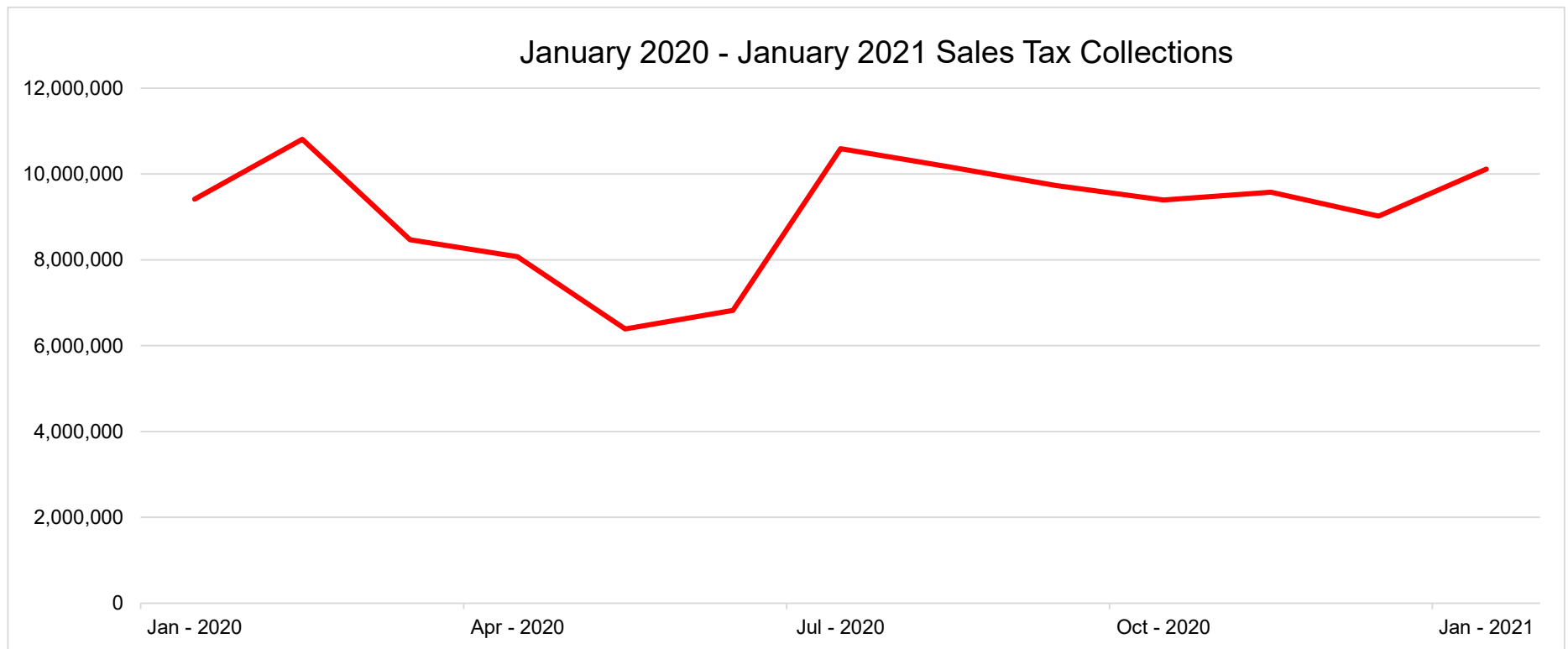
- Current collections
- Slight decline in revenue through in 2020, and a full recovery in FY 2022





## Recent Sales Tax Collections

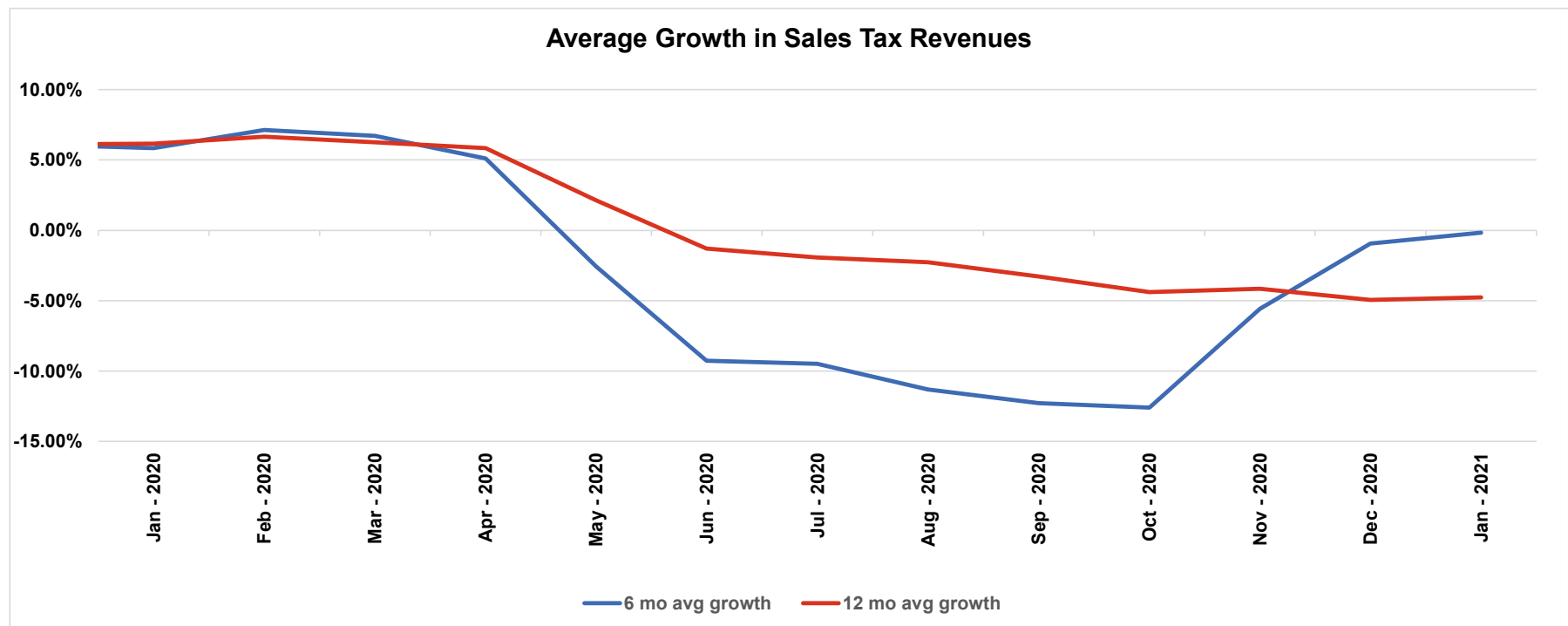
- ◆ The chart below shows the sales tax collections over the last year. Revenues fell late Spring with a recent rebound in collections beginning in July





## Change in Sales Tax Revenues

- ◆ The Sales tax revenue collection has been negatively impacted by the COVID-19 Pandemic. The chart below shows the recent decline in collections along with a rolling six months and twelve-month average

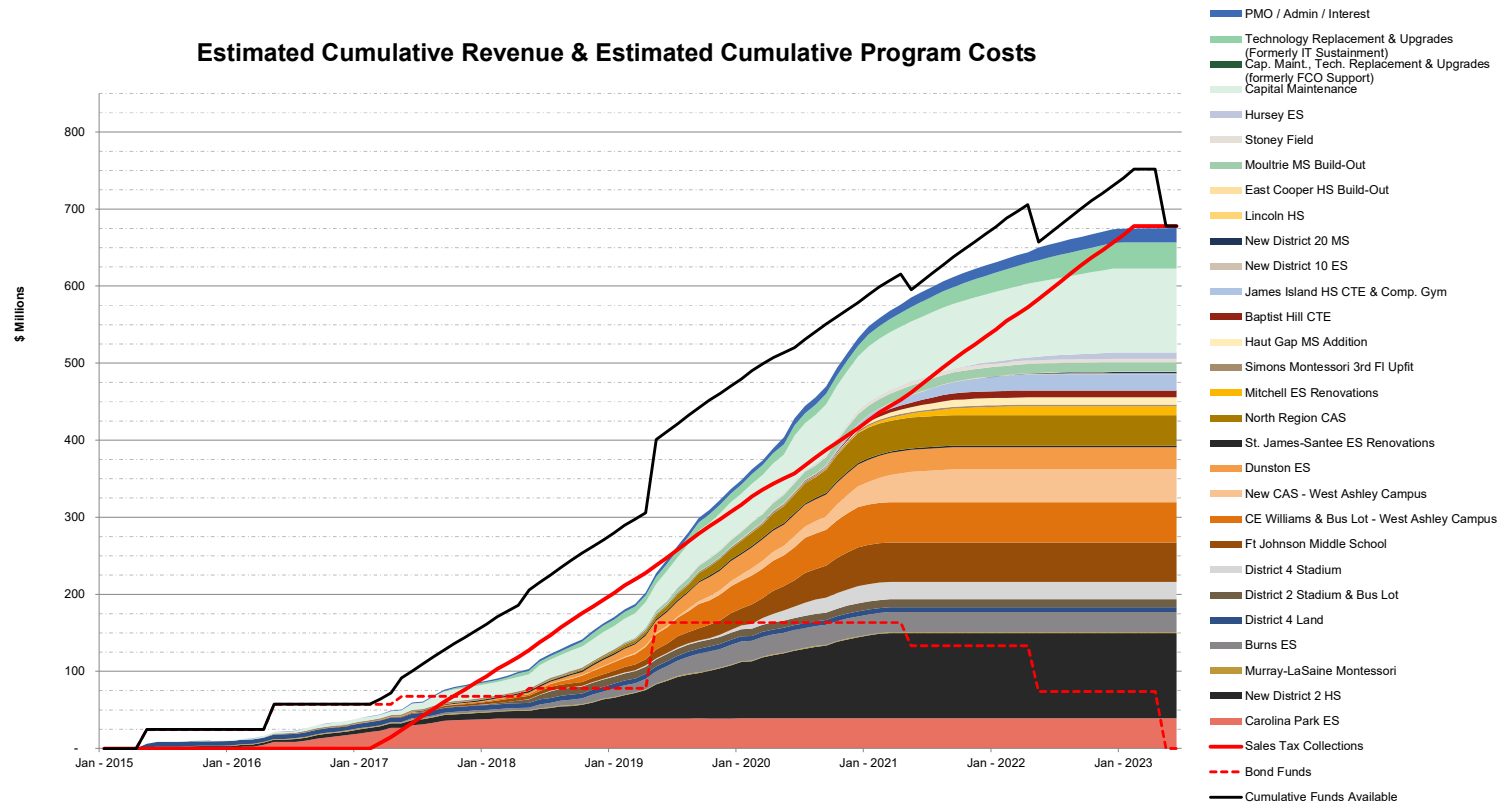




## Projected Program Expenses

Below is a cumulative total of actual/estimated program costs based on current cost curves

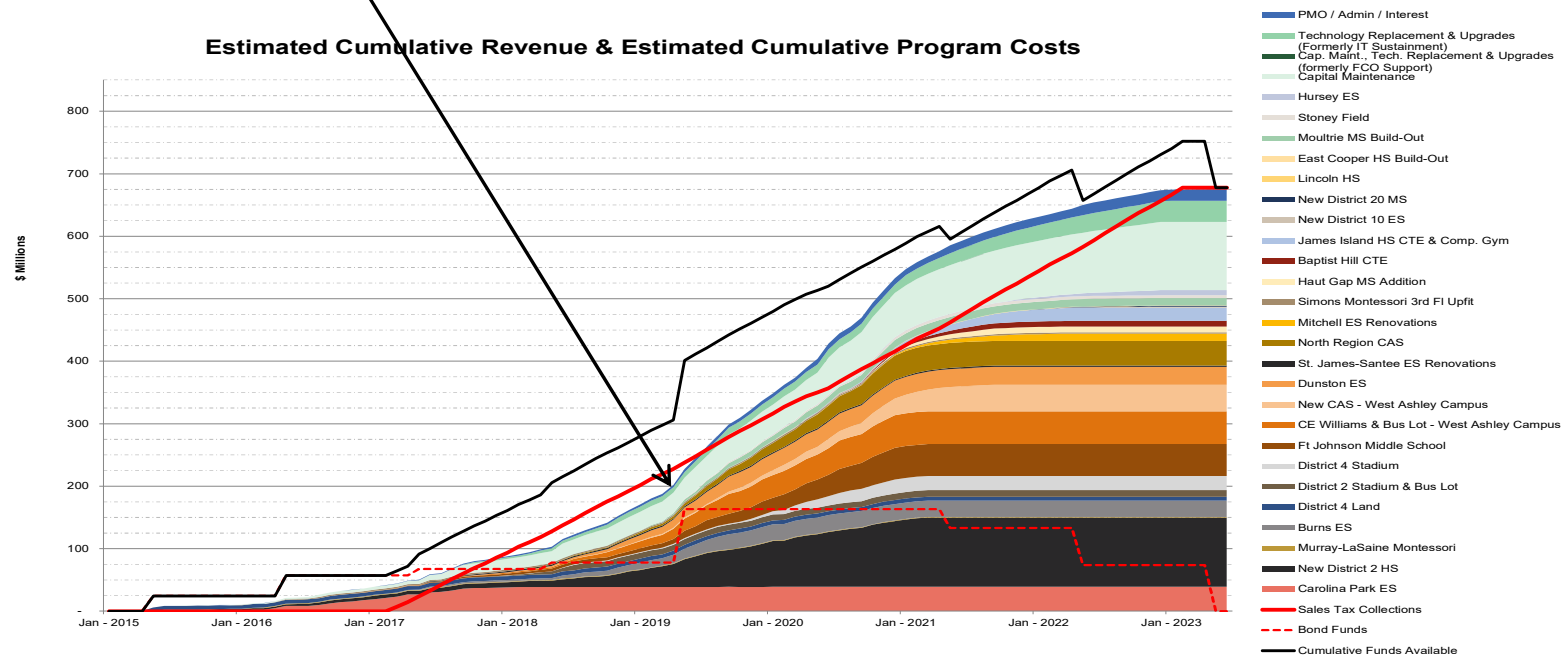
- PFM will continue monitor the sales tax program for potential shortfalls





## Interim Financing Needs

- The funding model, based on initial accelerated cash flows, anticipates significant interim financing needs
  - The issuance of \$163.3 million in 8% General Obligation (GO) Bond Anticipation Notes (BANs) for interim funding of projects is shown below
    - To date, the District has issued BANs to fund \$163.3 million of Phase IV projects
    - The District currently plans on paying off \$30 million of BANs in May 2021
- Construction timing will need to be refined to balance interim financing needs and sales tax receipts





## Sources & Uses

- ◆ The Sources and Uses of funds for the entire Phase IV program is based on the latest available actual revenues and expenses along with current future cost curve estimates

<b>Total Sources</b>	
Sales Tax Revenues <sup>1</sup>	677,955,611
Interest Earnings on BAN Proceeds <sup>2</sup>	998,563
Interest Earnings on Sales Tax Ending Balance <sup>3</sup>	6,295,848
<b>Total Revenues</b>	<b>685,250,022</b>
<b>Total Uses</b>	
Major Capital Project Costs <sup>4</sup>	513,727,906
Capital Maintenance <sup>5</sup>	108,926,070
Technology Replacement & Upgrades (formerly IT Sustainment) <sup>5</sup>	34,009,564
Capital Maintenance, Technology Replacement & Upgrades (formerly FCO Support of \$12MM)	-
PMO / Admin Costs <sup>5</sup>	9,616,998
Interest Expense on Interim Financing <sup>6</sup>	8,921,094
<b>Total Expenses</b>	<b>675,201,632</b>
<b>Excess (Deficit) Projected Revenues<sup>7</sup></b>	<b>10,048,390</b>

Notes:

<sup>1</sup> Actual Revenues based on November 2020 Collection with a simulated recovery from the effects of the COVID Pandemic

<sup>2</sup> Actual interest earnings on BAN proceeds

<sup>3</sup> Interest Earnings on estimated fund balance at 0.25%

<sup>4</sup> Current Projections - November 2020 Cost Curves plus adjustment to budget

<sup>5</sup> Actual costs through November 2020, original projections thereafter

<sup>6</sup> Actual interest rate expense through May 2021 and interest rate assumption of 2.00% thereafter. Interest expense is directly affected by changes to the estimated size and timing of interim finance needs, as updates are made in the model

# Thank You



pfm

## 2017-2022 Phase IV Capital Program Citizens Oversight Steering Committee II

February 3, 2021

### Status

D3 Bus Lot: CCSD looking at new options at JICHS site and new location.

West Ashley Area CAS:

Phase 1 Early Site Work is complete.

Phase II Building: The overall project is 82% completed. The building structure and roofing have been completed. Crews continue with grading and finalizing exterior site work surrounding the building. The first, second, and third floor overhead MEP installation is 99% complete. Interior walls have been painted on all levels. Interior doors have been installed, and flooring will start in the next few weeks. Project on schedule for occupancy August 2021.

Stoney Field Improvements:

Project scope is divided into two (2) phases. Phase I (selective demolition and surcharging the athletic field) is completed. Phase II consists of installation of new synthetic turf, refurbish the scoreboard and provide a 20' asphalt walking path around field. The City of Charleston requested to change the walking path to a 20' 400m equal quadrate asphalt "track" with a synthetic track finish coating which was approved by CCSD and City to share costs. Phase II design, permitting and approval were delayed due to review and implementation of City's request and revisions. Phase II current work; retaining walls complete at bleachers, retaining walls at west/marsh end are in progress but progress in this area has been slowed due to numerous obstructions found below grade. Turf Field is scheduled be Substantially Complete by August 30, 2021.

James Island Charter HS:

CTE construction was awarded (to include the building pad for the Competition Gym) to MB Kahn Construction. The Competition Gym construction award was postponed due to COVID-19 revenue/funding concerns but was later approved by the Board to proceed with the Gym. Construction is ongoing with earthquake drains complete at CTE & Gym, foundations underway and storm drain to a new pond ongoing. The Gym scope has been negotiated with the General Contractor and is being added to their contract. Substantial Completion for the CTE portion is scheduled for December 2021. The Gym scope will be completed approximately March 2022.

The temporary portables package has been completed and the Charter is in the process of moving their programs into those portables currently.

---

Baptist Hill CTE:

Baptist Hill CTE Addition is a multi-phased project. Phase 1 includes renovations within the existing high school building to support displaced programs and is complete. The existing CTE building is demolished and the Phase 2 construction of the new CTE building is underway. Earthquake drains are installed, the building pad is graded, footings are being poured, foundation block is being installed and underground utilities are proceeding. The project is on schedule to be ready for occupancy for August 2021.

Haut Gap MS:

Construction Dynamics, Incorporated has been awarded the contract for the new addition at Haut Gap Middle School. The project has received final approvals from the Office of School Facilities and the City of Charleston. A pre-construction meeting with the City of Charleston is scheduled for the end of January and the construction team will break ground in early February. The project is on schedule for the new addition to be complete and ready for occupancy by December 2021.

Mitchell ES:

Project construction started August 17<sup>th</sup>. New MEP in corridors are 80% complete. The new rooftop HVAC units have been installed and new roof installation is ongoing. The new security vestibule and administrative space improvements are 60% complete. The new exterior elevator installation is scheduled to commence by February 1, 2021. New FF&E for the school will be ordered in the coming weeks. Additional scope work; which is funded by an alternate source, is being identified and contracts negotiated with the current contractor as well as other CCSD approved contractors which consists of primarily total window replacement, building envelope repairs and additional interior finishes replacement. Project on schedule for occupancy August 2021.

CCSD EOC Expansion:

Rosenblum and Coe designed the 1,290-sf addition to the EOC. Chambers and Associates was the successful bidder. The NTP was issued on December 7, 2020 with a Substantial Completion date of July 2, 2021. This addition includes adding five (5) offices, a general meeting area with kitchen facilities and a new restroom with a shower. Mobilization has begun and site grading has started. Temporary ramps and emergency access per OSF is underway. Site fencing is underway.

Advance Design for Replacement for Lincoln High/Middle School:

Design contract awarded to LS3P Architects. Awaiting programing team to be established. Site selection due diligence work complete. OSF land approval complete. Awaiting jurisdictional zoning approvals.

**COMPLETED PROJECTS**

Dunston ES:

C E Williams MS:

Camp Road MS:

Lucy Beckham HS:

Moultrie Middle School (Exploratory) Expansion:

---

Cooper River CAS:

D4 Regional Stadium:

D2 Regional Stadium:

New Carolina Park ES:

St. James-Santee:

Simons 3<sup>rd</sup> Floor Up fit:

Murray LaSaine:

District 4 Land (Deer Park):

Burns:

District 4 Land (Deer Park):

## WEBSITE UPDATES

<https://www.ccsdschools.com/Page/214>

---



WEST ASHLEY AREA CAS



STONEY FIELD  
IMPROVEMENTS



JAMES ISLAND CHARTER HS



BAPTIST HILL HS CTE

**NOT FOR PUBLIC RELEASE**

# **PHASE V (2020-2028) BUILDING PROGRAM**

## **WAVE DEVELOPMENT**

Jeff Borowy, PE  
Chief Operating Officer

BJ Sturman, Interim Director

3 Feb 2021

# BOARD APPROVED LIST

PHASE V (2023 - 2028) PROJECT LIST (NOT IN PRIORITY ORDER)			Board approved on 27 July 2020		
Count	DISTRICT	CAPITAL PROJECTS	CONSTRUCTION BUDGET	TOTAL BUDGET <sup>(1)</sup>	CUMULATIVE BUDGET
1	D4	Design, construct and equip a new Lambs Elementary school and Early Education and Family Development Center	\$ 72,000,000	\$ 90,000,000	\$ 90,000,000
2	D3	Design, construct and equip an Early Education and Family Development Center at the James Island Middle School Campus	\$ 26,500,000	\$ 33,125,000	\$ 123,125,000
3	D4	Design, construct, and equip a new Hursey Montessori School	\$ 41,000,000	\$ 51,250,000	\$ 174,375,000
4	D9	Design, construct, and equip a new elementary school on John's Island	\$ 27,400,000	\$ 34,250,000	\$ 208,625,000
5	D4	Design, construct and equip a new Ladson Elementary School	\$ 27,400,000	\$ 34,250,000	\$ 242,875,000
6	D23	Design, construct and equip additional elementary school capacity in District 23	\$ 9,200,000	\$ 11,500,000	\$ 254,375,000
7	D2	Design, construct and equip a new James B. Edwards Elementary School	\$ 39,000,000	\$ 48,750,000	\$ 303,125,000
8	D10	Design, construct, and equip new or expand middle school facilities in West Ashley	\$ 32,000,000	\$ 40,000,000	\$ 343,125,000
9	D2	Design, construct and equip an expansion at Cario Middle School	\$ 7,500,000	\$ 9,375,000	\$ 352,500,000
10	D4	Design, construct, and equip an expansion at Stall High School	\$ 9,200,000	\$ 11,500,000	\$ 364,000,000
11	D3	Renovate James Island Charter High School Stadium complex	\$ 1,850,000	\$ 2,312,500	\$ 366,312,500
12	D20	Design, construct, and equip support facilities for Early College High School on the Fraser Campus	\$ 23,509,551	\$ 29,386,939	\$ 395,699,439
13	D9	Renovate the St. John's High School Stadium complex	\$ 1,800,000	\$ 2,250,000	\$ 397,949,439
14	DW	District Wide Paving Improvements to include Murray Lasaine, Academic Magnet and Belle Hall	\$ 5,000,000	\$ 6,250,000	\$ 404,199,439
15	DW	District Wide Minor Building Improvements to include Wando	\$ 5,000,000	\$ 6,250,000	\$ 410,449,439
16	DW	District Wide Athletic Improvements to include Military Magnet Academy	\$ 3,500,000	\$ 4,375,000	\$ 414,824,439
		UNFUNDED PROJECTS			
17	D4	Renovate Ladson Early Education and Family Development Center	\$ 10,900,000	\$ 13,625,000	\$ 428,449,439
18	D10	Design, construct, and equip a West Ashley Early Learning/Head Start	\$ 24,000,000	\$ 30,000,000	\$ 458,449,439
19	D4	Design, construct, and equip Mary Ford Early Education and Family Development Center	\$ 26,500,000	\$ 33,125,000	\$ 491,574,439
20	D10	Design, construct and equip an expansion at Montessori Community School	\$ 5,200,000	\$ 6,500,000	\$ 498,074,439
21	D2	Design, construct and equip an expansion at Carolina Park Elementary School	\$ 10,000,000	\$ 12,500,000	\$ 510,574,439
22	D10	Design, construct, and equip a new elementary school in West Ashley	\$ 30,000,000	\$ 37,500,000	\$ 548,074,439
23	D4	Design, construct and equip an expansion at Pepperhill Elementary School	\$ 8,300,000	\$ 10,375,000	\$ 558,449,439
24	D4	Design, construct, and equip a new A.C. Corcoran Elementary School	\$ 40,400,000	\$ 50,500,000	\$ 608,949,439
25	D23	Design, construct, and equip new or renovate a wing at Baptist Hill Middle-High School	\$ 20,000,000	\$ 25,000,000	\$ 633,949,439
26	D4	Design, construct and equip a new Northwoods Middle School	\$ 50,000,000	\$ 62,500,000	\$ 696,449,439
27	D4	Design, construct, and equip a new Morningside Middle School	\$ 42,000,000	\$ 52,500,000	\$ 748,949,439
28	D4	Design, construct, and equip an expansion at Deer Park Middle School	\$ 7,000,000	\$ 8,750,000	\$ 757,699,439
29	D1	Construction and equip a new shared middle - high school in District 1	\$ 65,000,000	\$ 81,250,000	\$ 838,949,439
30	D4	Purchase land near Midland Park Elementary School	\$ 3,000,000	\$ 3,750,000	\$ 842,699,439
31	D20	Purchase land north of Sanders Clyde for a future school	\$ 3,750,000	\$ 3,750,000	\$ 846,449,439
GRAND TOTAL PROJECT LIST			\$ 677,909,551	\$ 846,449,439	
Total Unfunded				\$ 431,625,000	
(1) The construction budget ONLY reflects construction cost (bldg and site) beginning in January 2021. The total budget includes a 25-30% plus-up for service fees, FFE, IT, etc.					

# PRIORITIZING PROJECTS INTO WAVES

## 1. Mission Critical

## 2. Life Safety/Growth

- a. Outdated facilities built before SC adopted the International Building Code (IBC)
- b. Bringing students into permanent structures
- c. Enrollment trends and future projections

## 3. Facility Condition

## 4. Programmatic support

- a. Advanced studies schools
- b. Arts infused schools
- c. Early learning / Child development
- d. STEM-Math & Science focus schools
- e. Center for Advanced Studies
- f. District wide athletics

# CAPITAL PROJECTS DRAFT WAVES

DRAFT LIST			PRIORITY FACTORS			
WAVE	PROJECT	PROPOSED SCOPE	MISSION CRITICAL	LIFE SAFETY/ GROWTH	FACILITY CONDITION	PROGRAM
1 (21-24)	Hursey	New 600 student; Demo existing		X	X	X
1 (21-24)	Ladson	New 900 student (1200 core) ES	X	X	X	
1 (21-24)	D9 Elementary School	New 600 student (900 core)	X	X	X	
1 (21-24)	Early College	New support building, Demo existing		X		X
1 (21-24)	Building Improvements	5 Tasks		X	X	
1 (21-24)	Paving Improvements	8 Tasks		X	X	
2 (22-25)	Lambs and Early Ed Center	New 1200 student and 300 student early ed center, Demo existing	X		X	X
2 (22-25)	Middle School Facilities West Ashley	To be determined	X		X	
2 (22-25)	Early Ed at JIMS campus	Renovate existing MS into 300 student early education and parent engagement center	X	X		X
2 (22-25)	Athletic Improvements	5 Tasks			X	
2 (22-25)	St. John's Stadium	New pressbox, renovate stands and concession areas			X	
3 (23-27)	D23 Additional Elementary School Capacity				X	X
3 (23-27)	James B. Edwards	New 900 student, Demo of existing building		X	X	
3 (23-27)	Stall Expansion	300 student expansion, Demo or relocate 8 trailers		X	X	
3 (23-27)	Cario Expansion	300 student expansion, Demo or relocate 6 trailers		X	X	
3 (23-27)	JI Charter Stadium	New pressbox, renovate stands and concession areas			X	

3

# UNFUNDED CAPITAL PROJECTS

PROJECT	PROPOSED SCOPE	PRIORITY FACTORS			
		MISSION CRITICAL	LIFE SAFETY/ GROWTH	FACILITY CONDITION	PROGRAM
Ladson as Early Ed Center	Relocated Ladson ES and renovate current building to a early education and parent engagement center	X			X
West Ashley Early Learning/Head Start	New 300 student early learning and head start center	X			X
Mary Ford Early Ed and Family Dev Center	New 300 student early education center and family engagement center	X			X
Community Montessori Expansion	100 student Montessori expansion		X		X
Carolina Park Expansion	300 student expansion		X		
New Elementary School in D10	New 600 (900 core) elementary school		X		
Pepperhill Expansion	Multipurpose and classroom expansion		X		
AC Corcoran	New 900 student elementary school		X		
Baptist Hill Middle-High Wing	New or renovate a wing			X	
Northwoods	New 900 (1200 core) student middle school		X	X	
Morningside	New 900 student middle school			X	
Deer Park Expansion	Fine arts and dining expansion		X		
New Middle-High School in D1	New 1000 (500/500) student middle-high school				
Land Purchase in D4	Land near Midland Park		X		
Land Purchase in D20	Land north of Sanders Clyde for future elementary school		X		

# NEW HURSEY MONTESSORI SCHOOL

**FUNDED**

**District 4**

Proposed Wave 1



Budget

Construction: \$41M

Total: \$51.3M

- Capacity - current building is a renovated elementary school and not preferable for montessori education
  - Facility Condition - systems are approaching end of useful life
  - Program - support montessori learning
- \* Project was on Phase IV program as only an addition.

# LADSON ELEMENTARY SCHOOL

**FUNDED**

**District 4**

Proposed Wave 1



Budget

Construction: \$27.4M

Total: \$34.3M

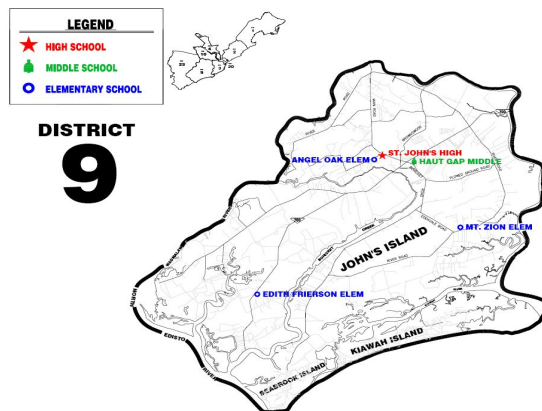
- Mission Critical
- Facility Condition - systems are approaching end of useful life; core spaces are undersized
- Capacity - most active trailers (12) at any ES or MS campus; building capacity is 519 and SY19-20 enrollment of 882

# NEW JOHNS ISLAND ELEMENTARY SCHOOL

**FUNDED**

**District 9**

Proposed Wave 1



Budget

Construction: \$27.4M

Total: \$34.3M

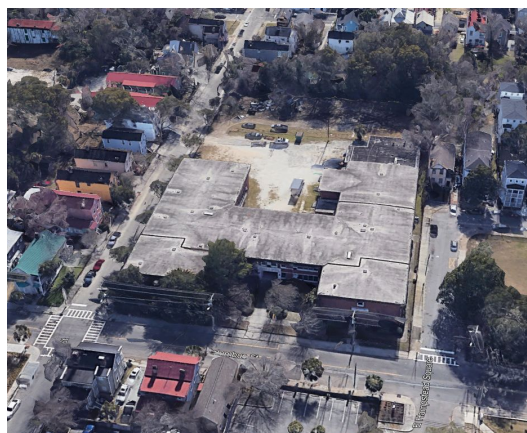
- Facility Condition - Mt. Zion's systems are approaching end of useful life; current site is on a septic system
- Capacity - new school would allow for rezoning to reduce enrollment at Angel Oak ES where we are adding a 3rd and 4th trailer in summer 2021

# SUPPORT FACILITIES FOR EARLY COLLEGE HS @ FRASER

**FUNDED**

**District 20**

Proposed Wave 1



Budget

Construction: \$1.9M

Total: \$2.3M

- Capacity - current program not met by space available in leased facility
- Program - support needed for specialized high school

# DISTRICT WIDE BUILDING IMPROVEMENTS

**FUNDED District Wide**

Budget Construction: \$5M

Proposed Wave 1

Total: \$6.3M

	District Wide Minor Building Improvements via expansion or renovation to include Wando \$6,250,000	TOTAL BUDGET	CUMULATIVE BUDGET
D2	Wando HS: Band room expansion	\$ 2,000,000	\$ 2,000,000
D4	North Charleston HS: Cafeteria reconfiguration/relocate front office	\$ 1,500,000	\$ 3,500,000
D10	Ashley River Creative Arts: Upgrade gym restroom/storage rooms	\$ 1,000,000	\$ 4,500,000
D10	West Ashley HS: Add instrument & sheet music storage for orchestra classroom	\$ 200,000	\$ 4,700,000
D20	Charleston Charter for Math & Science: Convert 3 classrooms into labs by adding water; upgrade gym lockers and restrooms	\$ 1,000,000	\$ 5,700,000
D9	Edith L. Frierson Montessori: Build multi-purpose room; school has never had one	\$ 1,750,000	\$ 7,450,000
D20	Charleston Charter for Math & Science: Additional classroom and meeting space	\$ 1,000,000	\$ 8,450,000
D20	Charleston Charter for Math & Science: Add classroom space attached to the cafeteria	\$ 1,000,000	\$ 9,450,000
D10	West Ashley HS: Addition for general ed classroom to replace trailer	\$ 1,500,000	\$ 10,950,000
D4	Pepperhill ES: Build multipurpose room; school has open-sided, covered play area (OBE with Pepperhill expansion?)	\$ 1,750,000	\$ 12,700,000
D23	EB Ellington ES: Construct a dedicated annex for all related arts into one building; (OBE by Phase V "D23" expansion?)	\$ 2,000,000	\$ 14,700,000
D3	Stiles Point ES: Expansion due to population growth; eliminate trailers (OBE by JIMS rebuild?)	\$ 2,000,000	\$ 16,700,000
D9	Angel Oak: Expansion due to population growth; eliminate trailers (OBE by Johns Island new school and rezoning?)	\$ 2,000,000	\$ 18,700,000

# DISTRICT WIDE PAVING IMPROVEMENTS

**FUNDED District Wide**

Budget Construction: \$5M

Proposed Wave 1

Total: \$6.3M

	District Wide Paving Improvements to include Murray Lasaine, Academic Magnet and Belle Hall \$6,250,000	TOTAL BUDGET	CUMULATIVE BUDGET
D4	Pepperhill ES: Student Dropoff - New paved/bus entrance; current driveway is a considerable chokepoint (OBE if Pepperhill rebuilt?)	\$ 1,500,000	\$ 1,500,000
D2	Belle Hall ES: Parking Additions - Expand parking, 50-75 spaces; 50 cars/day parking on grass	\$ 800,000	\$ 2,300,000
D3	Murray LaSaine: Student Dropoff - Extend car stacking loop; short length of car stacking on adjacent sidestreet	\$ 800,000	\$ 3,100,000
D23	EB Ellington ES: Parking Additions - Add parking lot (about 25 spaces) outside media center & computer lab; cars parking on grass	\$ 400,000	\$ 3,500,000
D2	Mamie Whitesides ES: Student Dropoff - Extend car stacking loop; car stacking on adjacent thoroughfare	\$ 600,000	\$ 4,100,000
D4	Mary Ford ES: Student Dropoff - Pave CFDC gravel drop-off loop and add 10 spaces; cars parking on grass; gravel dispersed	\$ 300,000	\$ 6,550,000
D2	East Cooper Montessori: Student Dropoff - Building new car stacking loop; car stacking on adjacent thoroughfare	\$ 1,100,000	\$ 5,200,000
D4	Academic Magnet: Parking Additions - Pave gravel parking lot (about 75 spaces); replace gravel with paved surface	\$ 700,000	\$ 6,250,000
D2	Jennie Moore ES: Student Dropoff - Construct/pave an additional driveway entrance into front parking lot, or make 2 lanes all way	\$ 350,000	\$ 5,550,000
D10	CE Williams North (WAMS): Mill/overlay bus parking lot/loop; bus parking lot in very poor condition	\$ 400,000	\$ 6,950,000
D4	WB Goodwin ES: Car rider loop improvements; current stacking on adjacent sidestreet (OBE by Phase V Lambs/early ed project?)	\$ 750,000	\$ 7,700,000

10

# LAMBS ELEMENTARY & EARLY LEARNING CENTER

**FUNDED**

**District 4**

Proposed Wave 2



Budget

Construction: \$72M

Total: \$90M

- Mission Critical - combine the 3 elementary schools along the Dorchester Road corridor; creating a 1200 student ES allowing improved programming
- Program - building a separate early learning center on campus
- Facility Condition - systems are approaching end of useful life

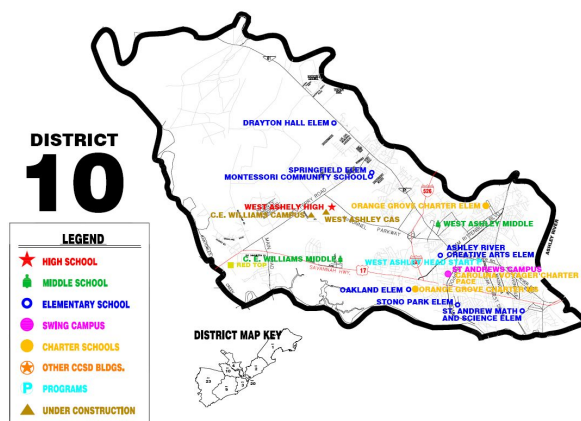
11

# NEW OR EXPAND D10 MIDDLE SCHOOL FACILITIES

**FUNDED**

**District 10**

Proposed Wave 2



Budget

Construction: \$32M

Total: \$40M

- Mission Critical - long term middle school plan for West Ashley
- Facility Condition - former West Ashley MS and St Andrews MS campus are approaching end of useful life

# EARLY LEARNING CENTER AT JAMES ISLAND MS CAMPUS

**FUNDED**

**District 3**

Proposed Wave 2



Budget

Construction: \$26.5M

Total: \$33.1M

- Mission Critical - provide an Early Learning Center on James Island
- Capacity - center will relief growth and capacity issues at all D3 elementary schools; adding two trailers at Stiles Point ES summer 2021

# DISTRICT WIDE ATHLETIC IMPROVEMENTS

**FUNDED District Wide**

Proposed Wave 2

Budget Construction: \$3.5M

Total: \$4.4M

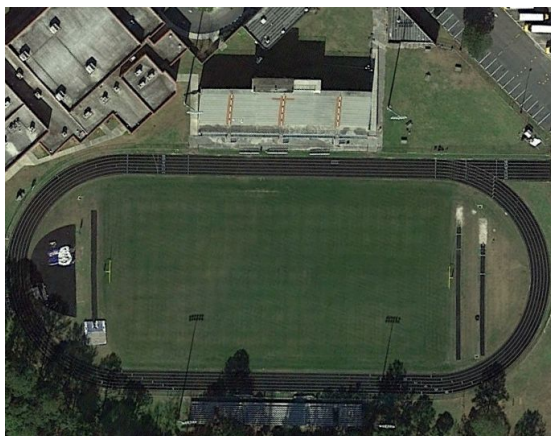
	District Wide Athletic Improvements to include Military Magnet Academy - \$4,375,000	TOTAL BUDGET	CUMULATIVE BUDGET
D23	Baptist Hill MS/HS: Weight room addition	\$ 1,000,000	\$ 1,000,000
D10	West Ashley HS: Wrestling room addition	\$ 1,350,000	\$ 2,350,000
D9	St John's HS: Improve city park as St John's HS sports complex	\$ 900,000	\$ 3,250,000
D10	West Ashley HS: Build athletic storage bldg (replace conexs)	\$ 500,000	\$ 3,750,000
D4	Military Magnet MS/HS: Enhance athletic facilities	\$ 625,000	\$ 4,375,000
D23	Baptist Hill MS/HS: Add metal bleachers over concrete	\$ 300,000	\$ 4,675,000
D10	West Ashley HS: Additional lighting to areas not currently covered; practice field, concession stand, ticket booth	\$ 100,000	\$ 4,775,000
D10	West Ashley HS: New scoreboard for gym	\$ 300,000	\$ 5,075,000
D10	West Ashley HS: Construct two (one?) ticket booths with breezeway windows	\$ 200,000	\$ 5,275,000
D10	West Ashley HS: Update football concession stand	\$ 100,000	\$ 5,375,000
D10	West Ashley HS: Update field house locker rooms	\$ 200,000	\$ 5,575,000

# RENOVATE ST JOHN'S HIGH SCHOOL STADIUM

**FUNDED**

**District 9**

Proposed Wave 2



Budget

Construction: \$1.8M

Total: \$2.3M

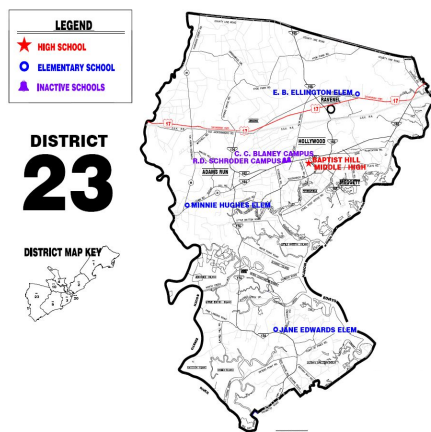
- Facility Condition - outdated pressbox, stands, and concession area

# ADDITIONAL SCHOOL CAPACITY IN DISTRICT 23

**FUNDED**

**District 23**

Proposed Wave 3



Budget

Construction: \$9.2M

Total: \$11.5M

- Creating and improving opportunities for D23 students; specific plan TBD

# JAMES B. EDWARDS ELEMENTARY SCHOOL

**FUNDED**

**District 2**

Proposed Wave 3



Budget

Construction: \$39M

Total: \$48.8M

- Facility Condition - facility is approaching end of useful life
- High community response via surveys and a congruent response with leadership

# EXPANSION AT STALL HIGH SCHOOL

**FUNDED**

**District 4**

Proposed Wave 3



Budget

Construction: \$9.2M

Total: \$11.5M

- Capacity - 8 trailers on site; provide permanent facility
- School expecting enrollment growth

# EXPANSION AT CARIO MIDDLE SCHOOL

**FUNDED**

**District 2**

Proposed Wave 3



Budget

Construction: \$7.5M

Total: \$9.4M

- Capacity - 6 trailers on site; provide permanent facility
- School expecting slight enrollment growth

# RENOVATE JAMES ISLAND CHARTER STADIUM

**FUNDED**

**District 3**

Proposed Wave 3



Budget

Construction: \$1.9M

Total: \$2.3M

- Facility Condition - outdated pressbox, stands, and concession area

# Questions?