

New District 9 Elementary School

Community Brief
September 2021

AGENDA

- Sales Tax Referendum Summary
- Priority Factors
- Site Options
- Project Scope
- Next Steps

SALES TAX REFERENDUM SUMMARY

- Second extension for 2023-2028 passed overwhelmingly by Charleston County voters in November 2020
- Included project: “Construct and Equip New Elementary School on Johns Island”
- Board approved executing funded projects in three waves based on priority factors

PRIORITY FACTORS

“How was the new Elementary School prioritized by Wave using these priority factors?”

- ✓ LIFE SAFETY (Facility Condition)
 - Mt Zion’s systems are approaching end of useful life
 - Current site is on a septic system
 - Current number of trailers is 6 (safety and security is improved when trailers are not required)

PRIORITY FACTORS

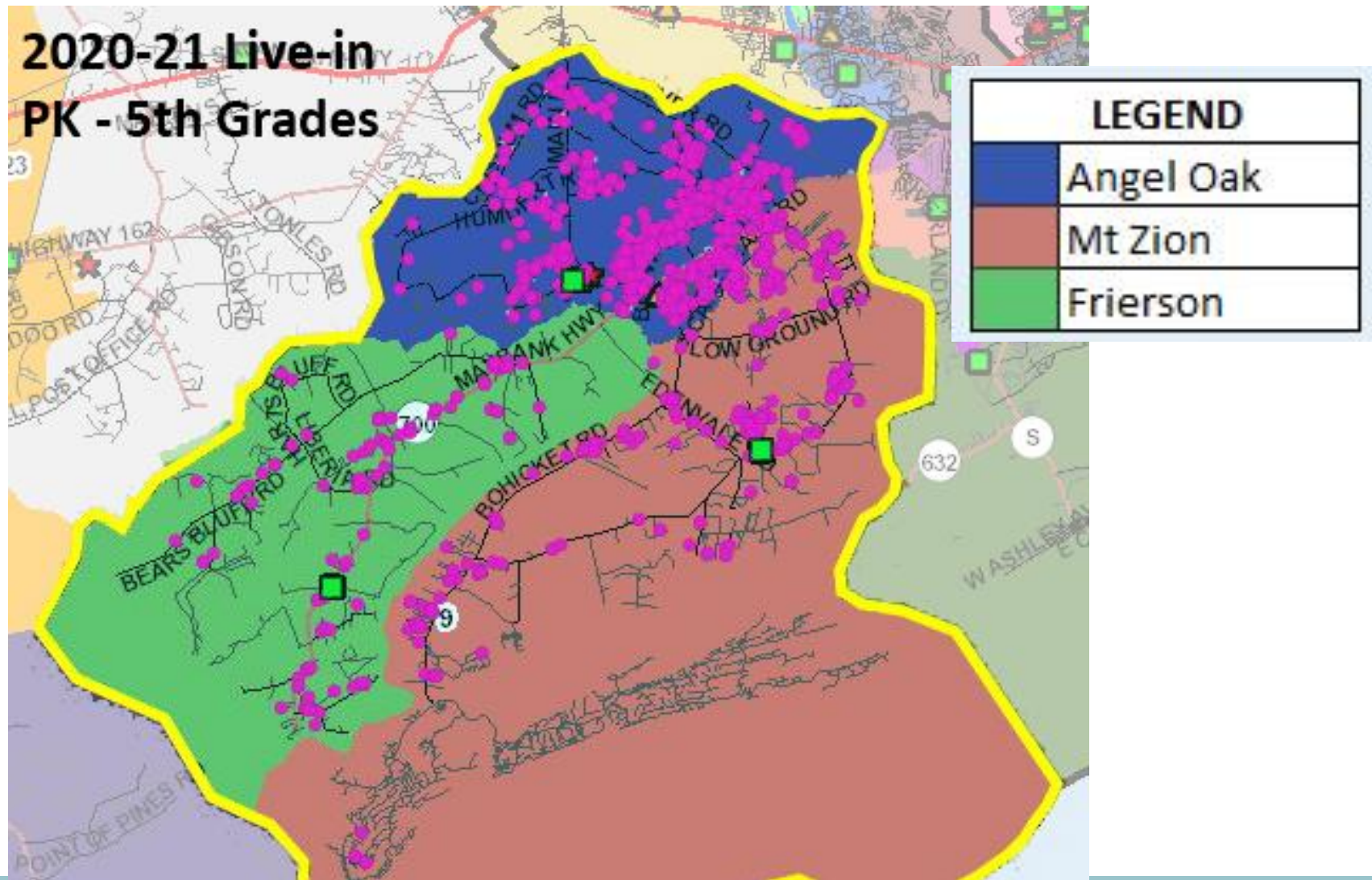
✓ GROWTH (Capacity)

Current Enrollment / Future Enrollment

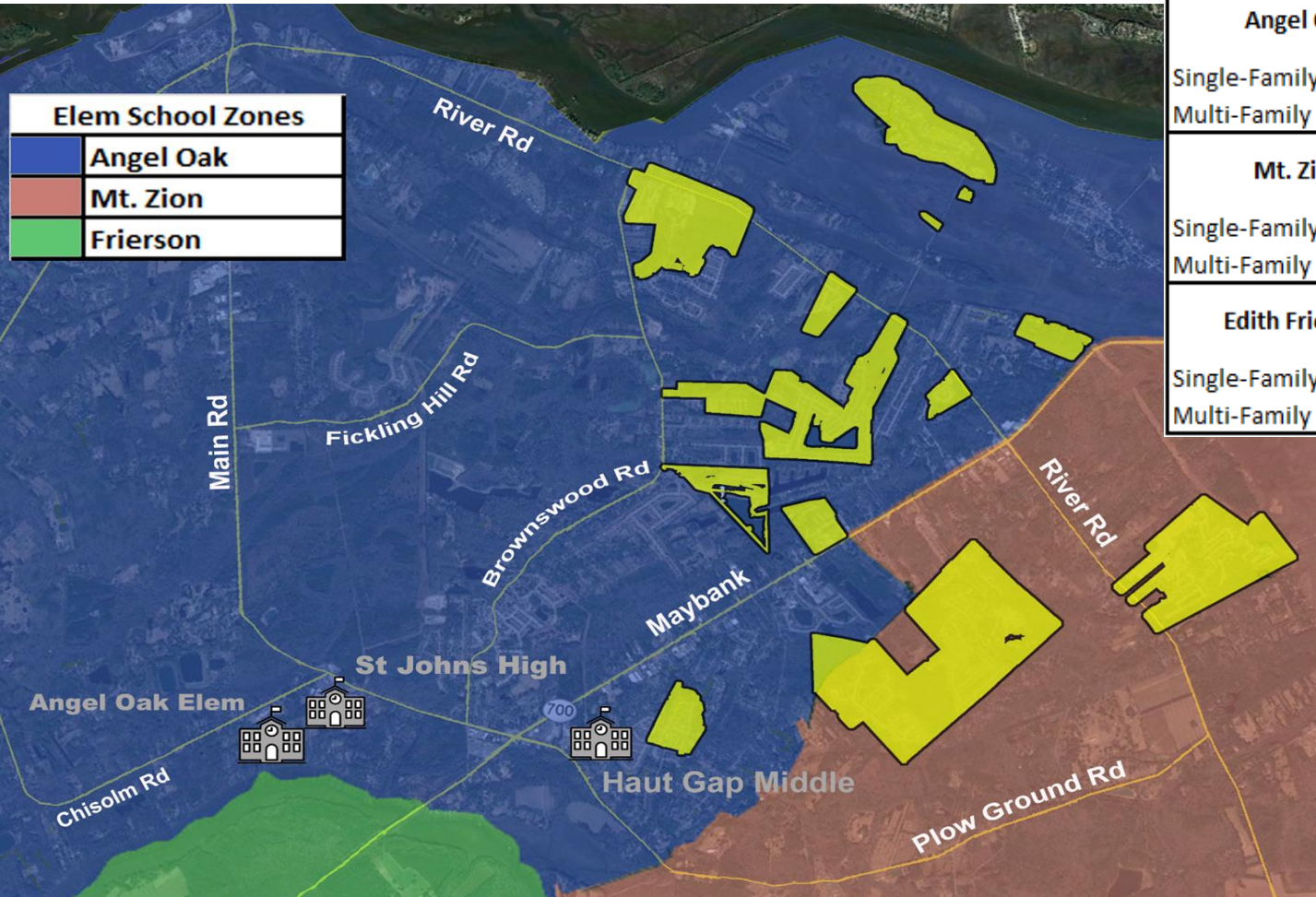
D9 Elementary Schools

							FY22	FUTURE PROJECTIONS ARE SUBJECT TO CHANGE YEARLY					
Angel Oak ES	Bldg Capacity	FY2017	FY2018	FY2019	FY2020	FY2021	PROJ	FY2023	FY2024	FY2025	FY2026	FY2027	FY2028
Total	590	393	408	510	628	636	742	758	779	795	791	788	785
Frierson ES	Bldg Capacity	FY2017	FY2018	FY2019	FY2020	FY2021	FY2022	FY2023	FY2024	FY2025	FY2026	FY2027	FY2028
Total	284	119	119	130	133	148	152	155	159	163	167	165	169
Mt Zion ES	Bldg Capacity	FY2017	FY2018	FY2019	FY2020	FY2021	FY2022	FY2023	FY2024	FY2025	FY2026	FY2027	FY2028
Total	344	325	337	264	264	247	283	265	273	295	322	339	331
	Total ES Bldg Cap	FY2017	FY2018	FY2019	FY2020	FY2021	FY2022	FY2023	FY2024	FY2025	FY2026	FY2027	FY2028
D9 Elementary Totals	1,218	837	864	904	1,025	1,031	1,177	1,178	1,211	1,253	1,280	1,292	1,285

LIVE-IN ATTENDANCE ZONE (PreK-5)



PLANNED/FUTURE DEVELOPMENT



Planned Developments Under Construction		
Angel Oak Elementary		Student Yield K-5
Single-Family Detached	704	141
Multi-Family Attached	294	64
Mt. Zion Elementary		Student Yield K-5
Single-Family Detached	997	199
Multi-Family Attached	0	0
Edith Frierson Montessori		Student Yield K-5
Single-Family Detached	0	0
Multi-Family Attached	0	0

SITE OPTIONS FOR NEW ELEMENTARY SCHOOL

- Current Mt. Zion Elementary School Site
 - Ability to design and install a new septic system on the campus is a significant concern
- River Road Area north of Maybank Hwy
 - Staff researching options

PROJECT SCOPE

Construction Management:

BROWNSTONE

Total Budget: \$34.3M

Design Start: Jan 2022

Project Completed: July 2024



- Design, construct, and equip a new 600 student (900 core) elementary school
- The configuration of the new school will follow current CCSD design requirements and education specifications

NEXT STEPS IN ADDITION TO CONSTRUCTION

Site Determination for New School

- Staff will evaluate comments from community meetings
- Staff evaluating other land sites on Johns Island more centrally located

Establish Attendance Zones

- Staff will work with the District 9 Constituent Board to set new attendance zones for elementary schools

Your input is essential

Fill out one of our comment cards
or
Email comments to

capital@charleston.k12.sc.us