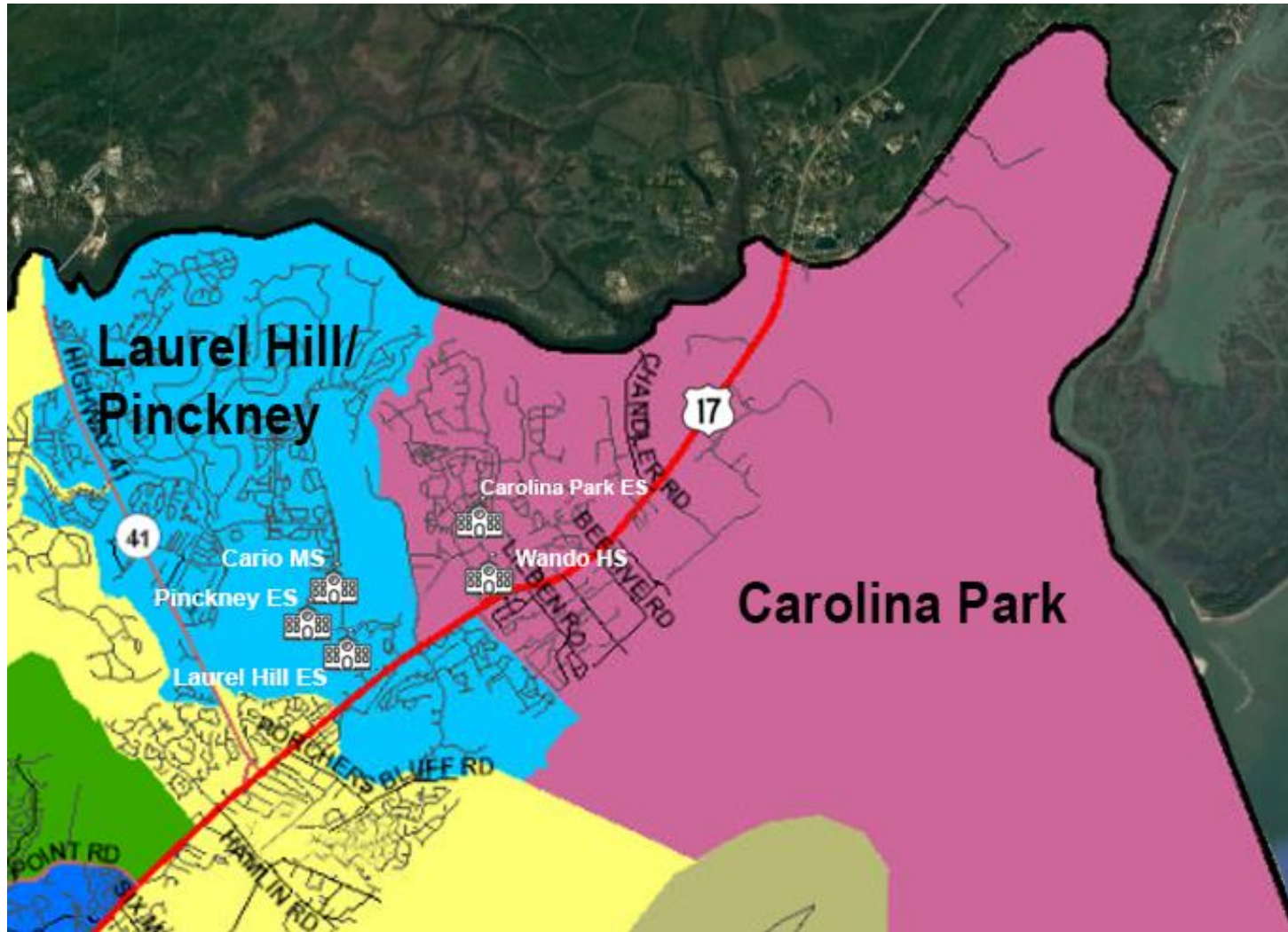


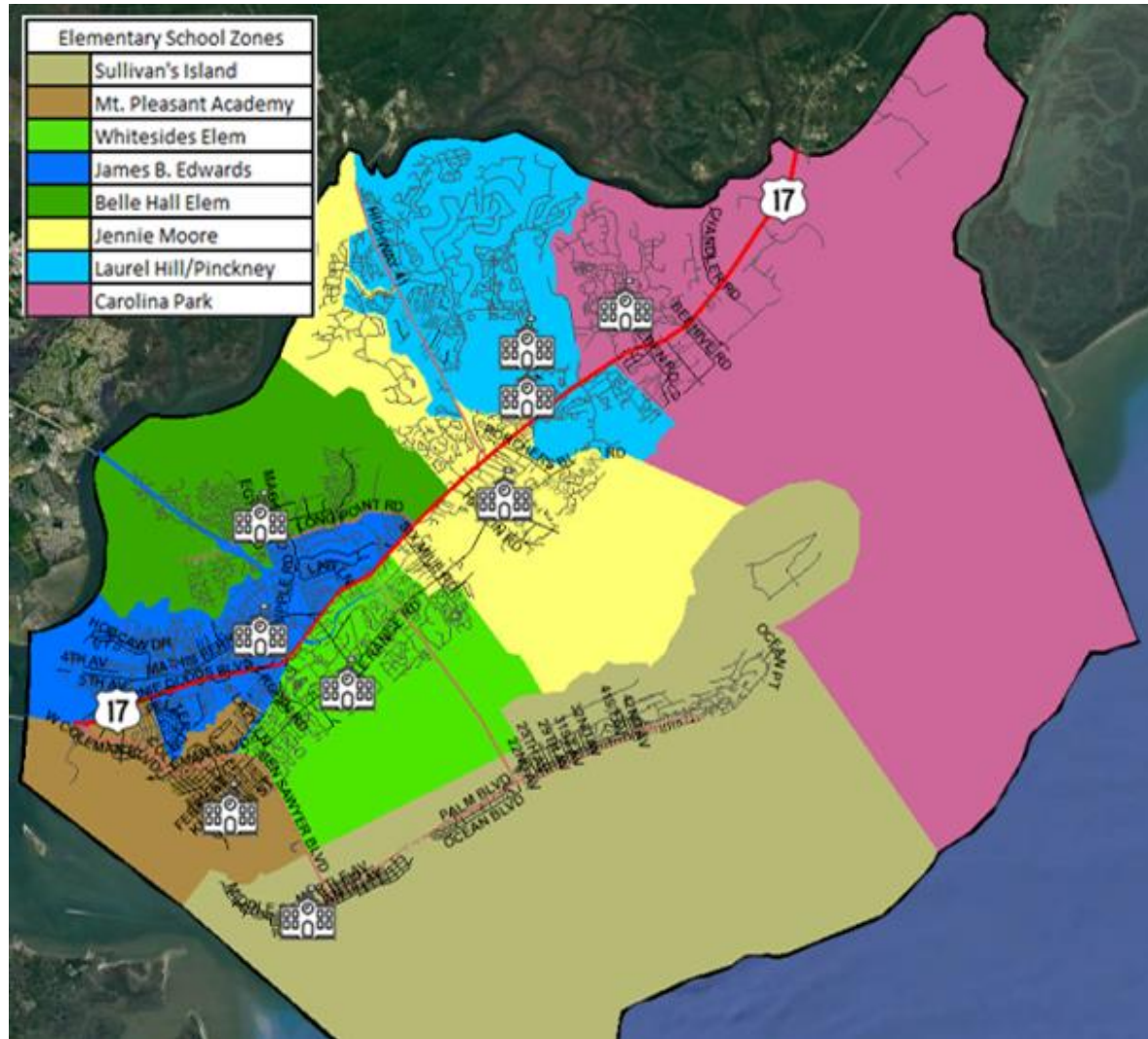
CCSD District 2 Carolina Park Rezone Information

Department of
Planning and Real Estate
August 2022

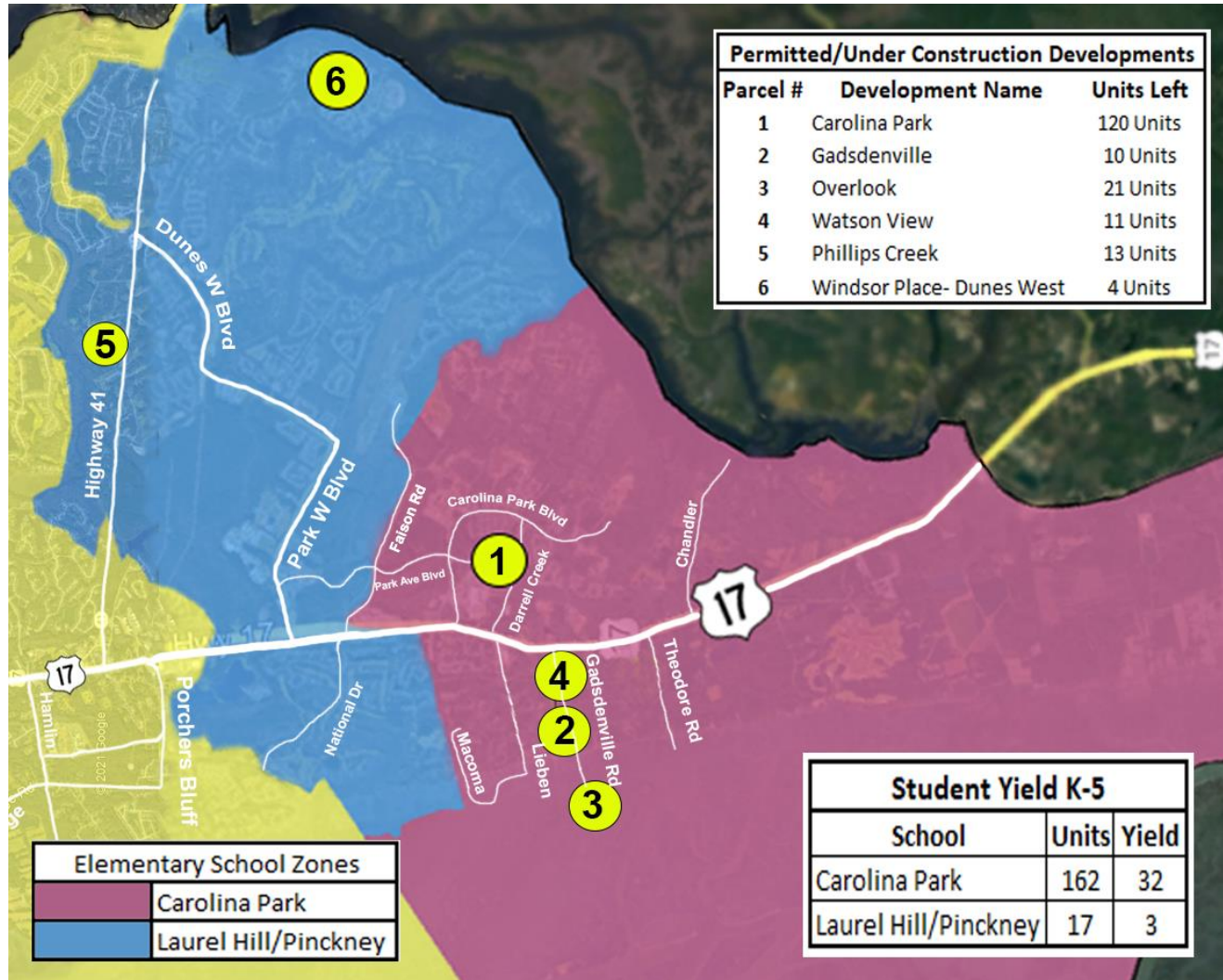
Carolina Park & Laurel Hill/Pinckney Current Zones:



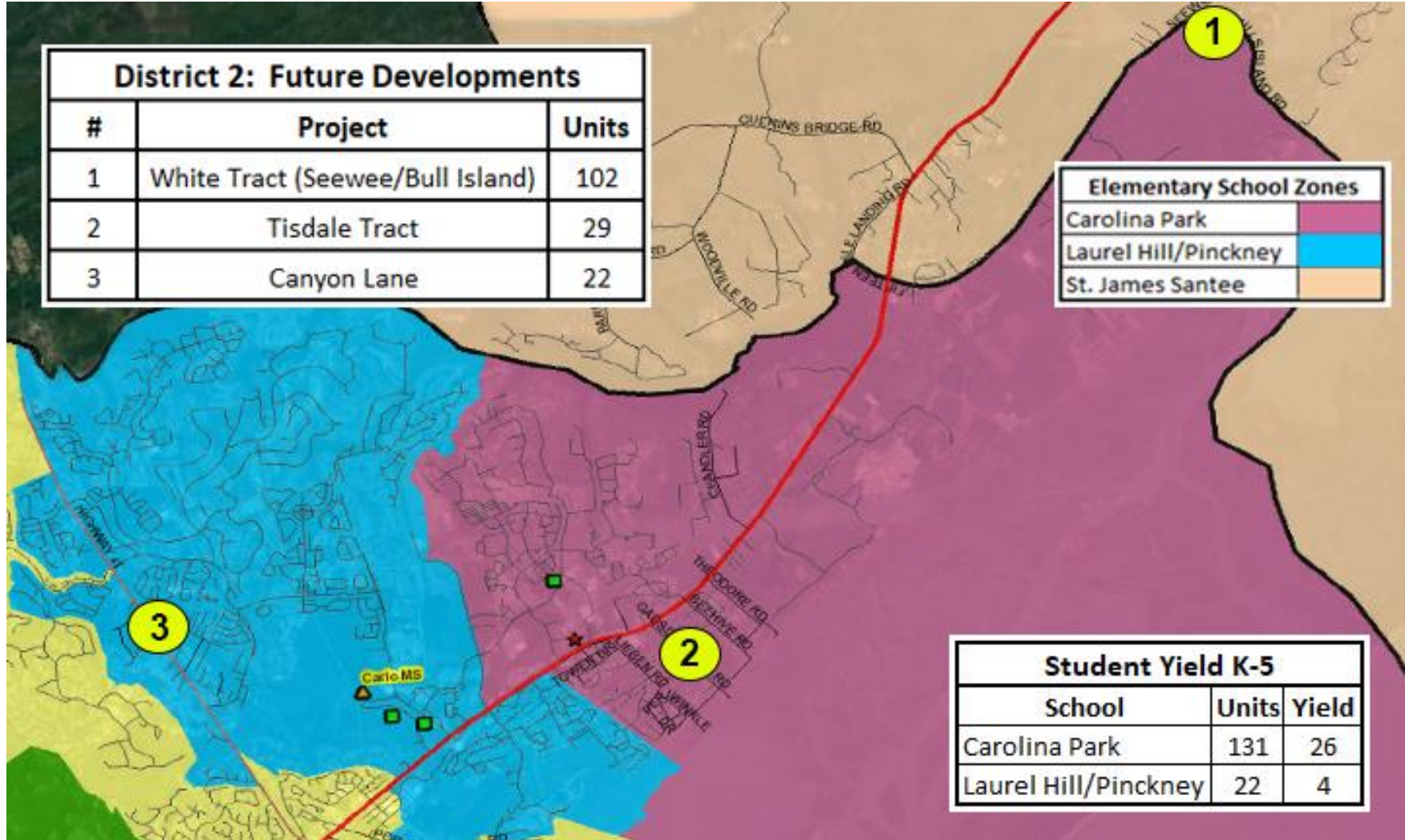
D2: All Elementary Zones:



D2 (North Mt. Pleasant) Permitted/Under Construction Developments:



D2 (North Mt. Pleasant) Potential Future Developments:



As of April 2022

Live In/Attend

Carolina Park	Total Live In	Live In/Attend In	Live Out/Attend In	Live In/Attend Out
2021-2022	874	805	90	69
2020-2021	940	843	44	97
2019-2020	934	861	41	73
2018-2019	815	742	37	73

**Live Attend data based on 45-day Certified Membership*

Enrollment Growth

Carolina Park:

*Projections are subject to change

Capacity	FY18	FY19	FY20	FY21	FY22	FY23	FY24	FY25	FY26	FY27	FY28
968	657	779	902	874	895	1,030	1,044	1,051	1,041	1,034	1,027

**FY21- 40 CD students moved to LH*

**FY22- Zone change effective (some 5th graders grandfathered in)*

Laurel Hill:

*Projections are subject to change

Capacity	FY18	FY19	FY20	FY21	FY22	FY23	FY24	FY25	FY26	FY27	FY28
946	657	621	619	539	685	690	690	702	703	697	685

Charles Pinckney:

*Projections are subject to change

Capacity	FY18	FY19	FY20	FY21	FY22	FY23	FY24	FY25	FY26	FY27	FY28
862	768	692	694	619	687	652	661	674	680	679	658

**FY18-FY22 data based on 9-day through 12-day official enrollment counts*

**Future forecasts include prior year's totals for CD, EHS & HS*

Guidelines/Factors Used by the D2 Constituent Board When Implementing a Rezone: (in no particular order)

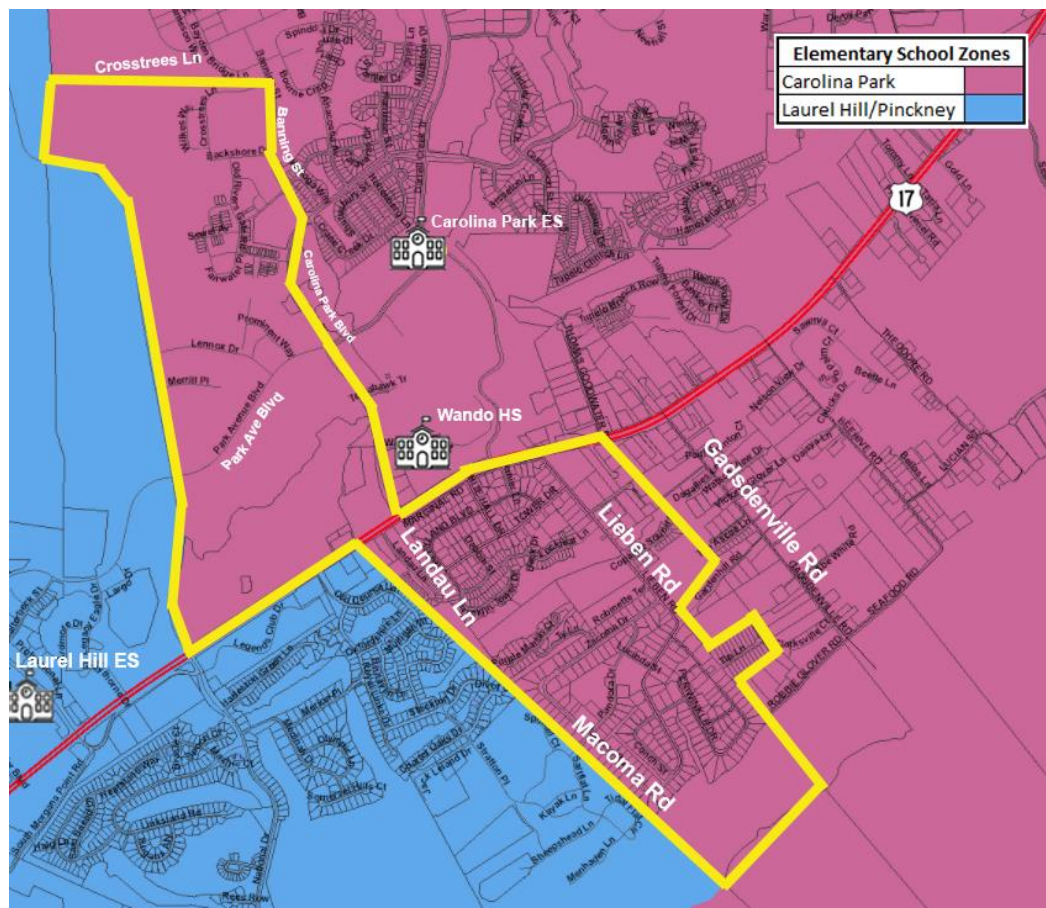
- **Consider current enrollment and capacities at all campuses**
- **Analyze traffic patterns and bus routes**
- **Determine patterns for shortest commutes**
- **Consider overall socioeconomic demographics**
- **Review 5-year plan for all affected school attendance zones with consideration to future planned developments in the affected areas**
- **Collect community input**

Puzzle Pieces:



*Numbers indicated are students who actually attend Carolina Park

Option 1: North of 17 from Faison Rd to Carolina Park Blvd and Banning St up through Crosstrees Ln; South of 17 includes all of the homes off of Landau Ln, Tip Ln and Lieben Rd through Macoma Rd (186 Students)



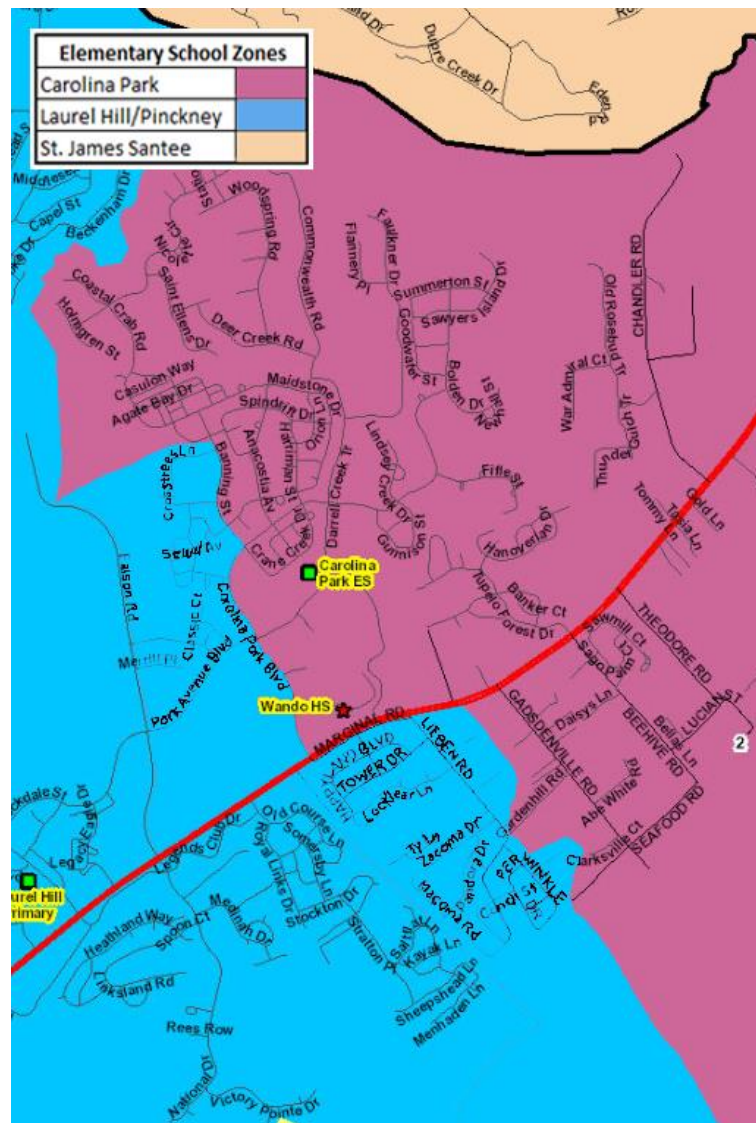
*Based on FY22 data

Grade	Count
K	48
1	24
2	32
3	35
4	31
5	30
Total	200

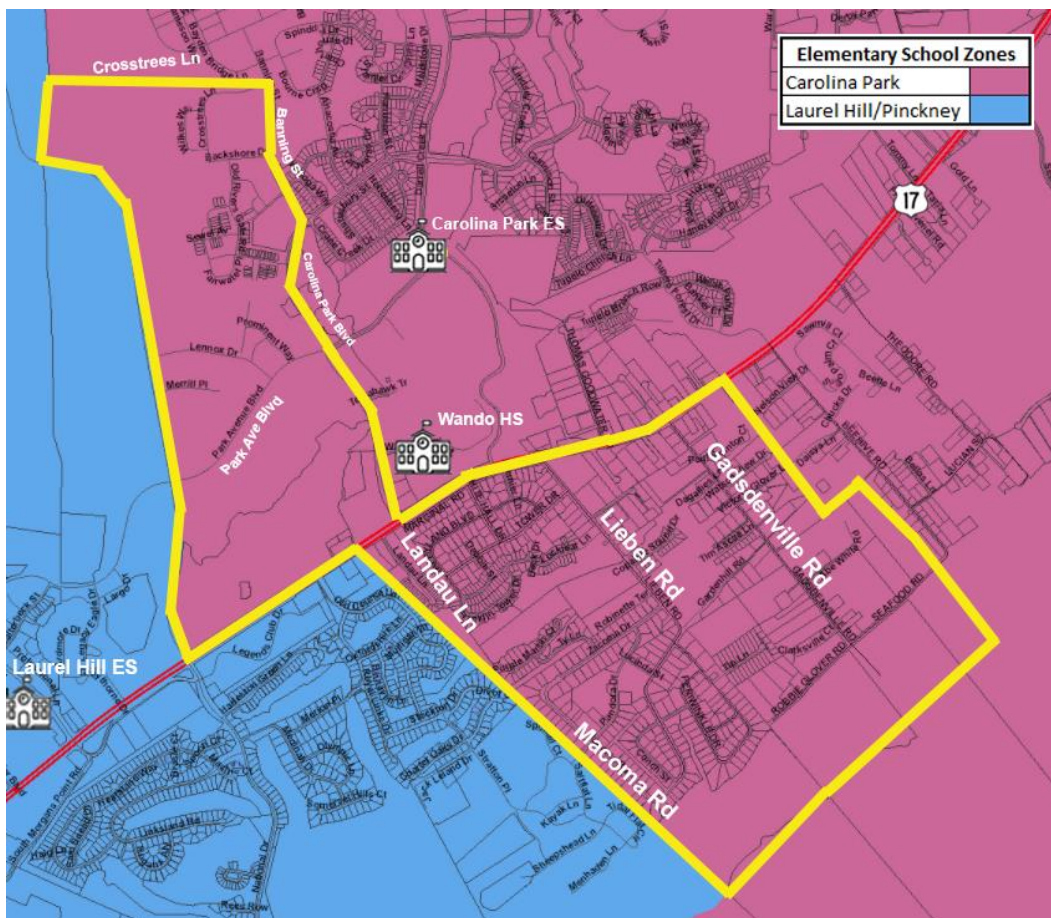
Ethnicity	Count
A	4
B	15
H	12
M	8
W	161
Total	200

Top Attending Schools	Count
Carolina Park ES	186
Jennie Moore ES	3
Sullivan's Island ES	3
Charles Pinckney ES	2
James Simons Montessori	2

Option 1: (Potential New Zone Map)



Option 1A: North of 17 from Faison Rd to Carolina Park Blvd and Banning St up through Crosstrees Ln; South of 17 includes Landau Ln up through Gadsdenville Rd including all of the homes off of Seafood Ln (197 Students)



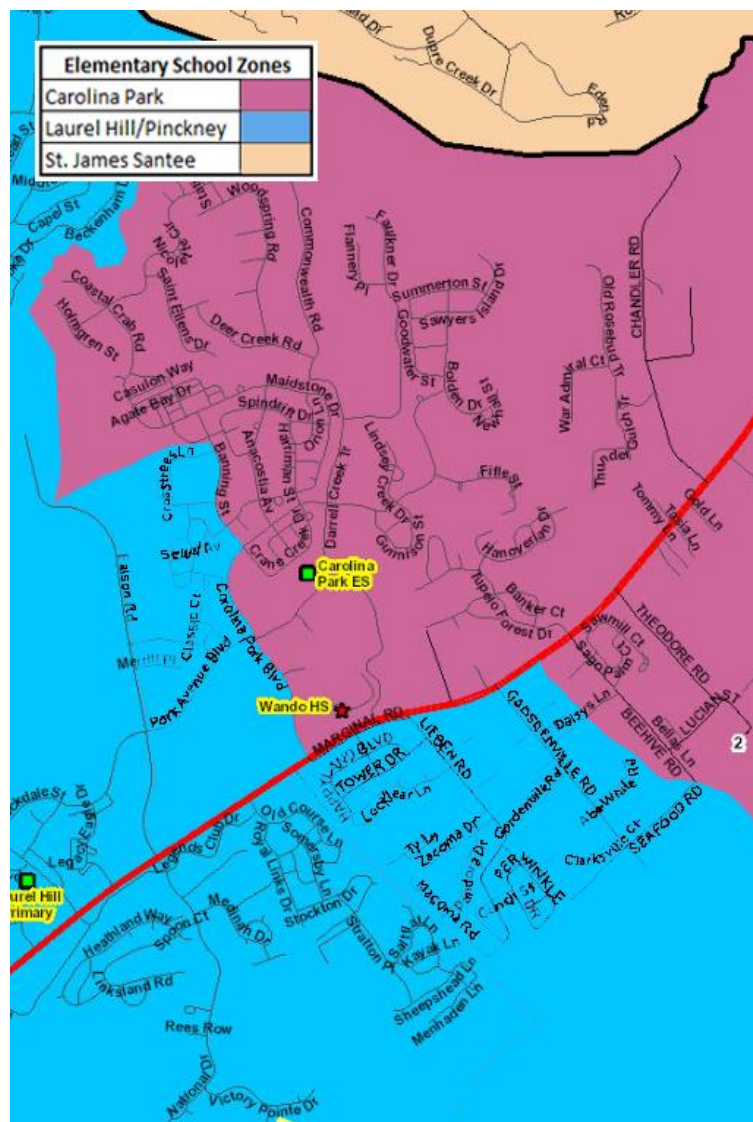
*Based on FY22 data

Grade	Count
K	49
1	25
2	35
3	36
4	33
5	34
Total	212

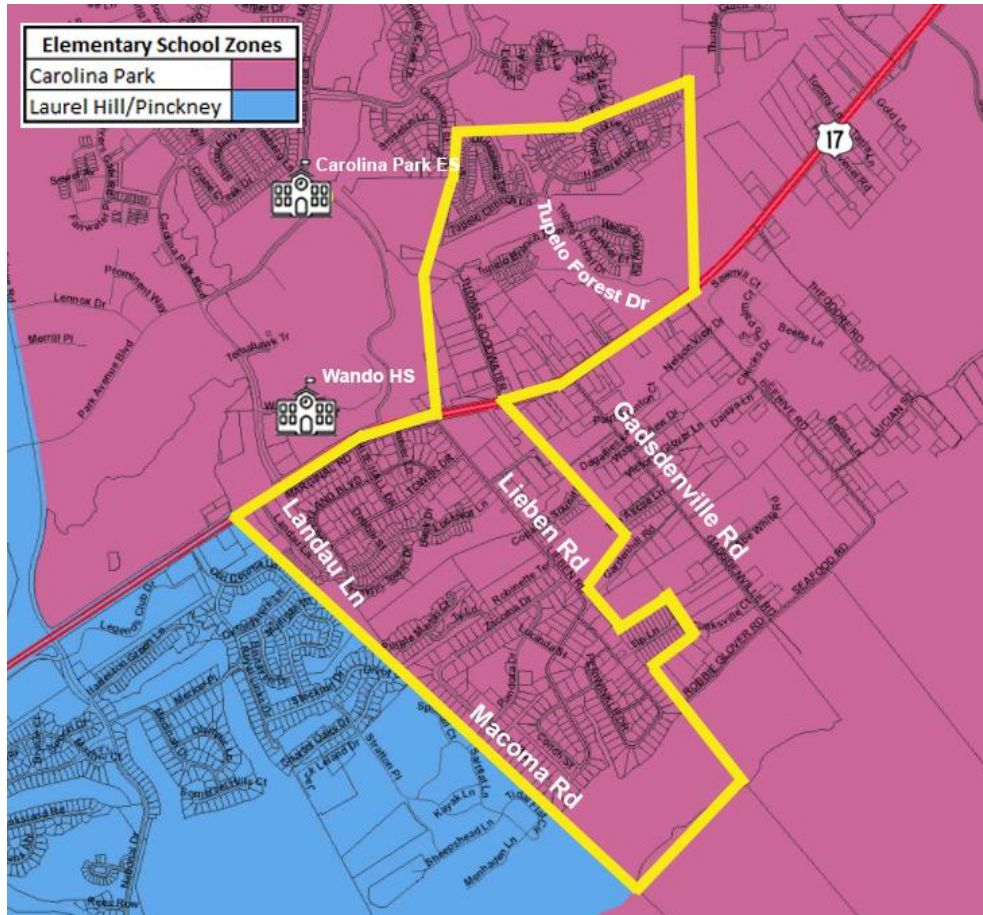
Ethnicity	Count
A	4
B	26
H	12
M	8
W	162
Total	212

Top Attending Schools	Count
Carolina Park ES	197
Jennie Moore ES	4
Sullivan's Island ES	3
Charles Pinckney ES	2
James Simons Montessori	2

Option 1A: (Potential New Zone Map)



Option 2: North of 17 including all homes off of Tupelo Forest Dr and Thomas Goodwater Dr; South of 17 includes all of the homes off of Landau Ln and Tip Ln and in between Macoma Rd and Lieben Rd (202 Students)



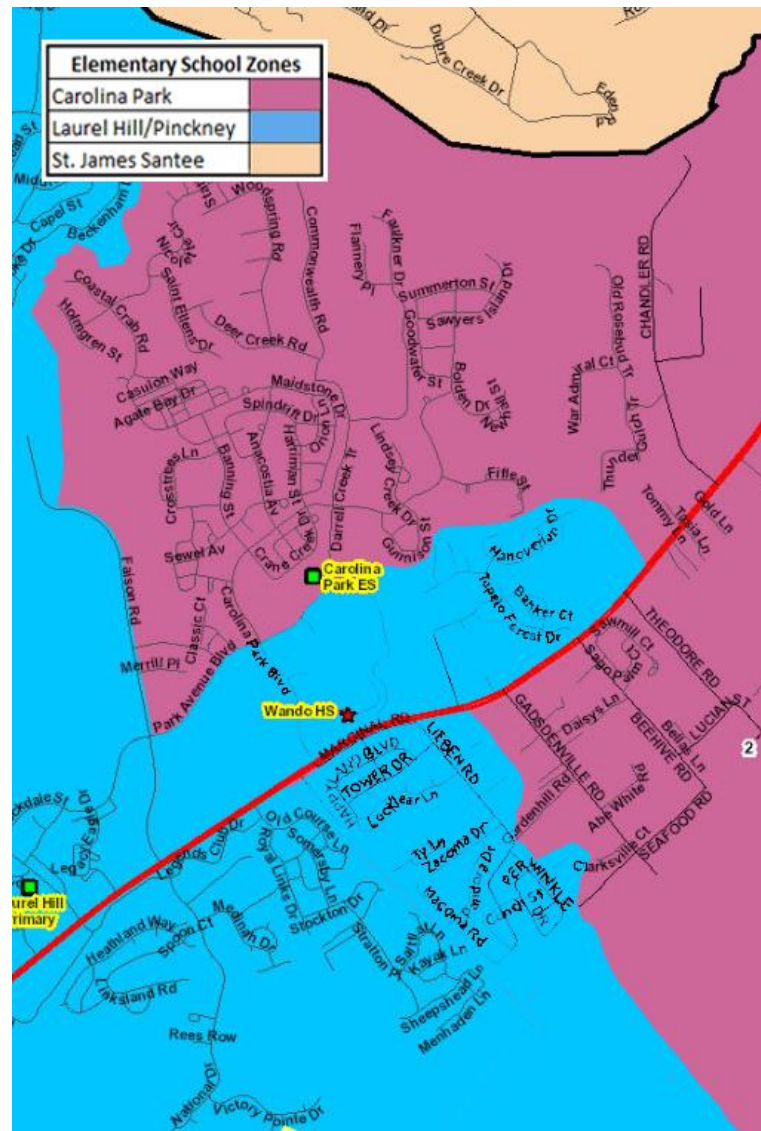
*Based on FY22 data

Grade	Count
K	38
1	31
2	38
3	44
4	42
5	29
Total	222

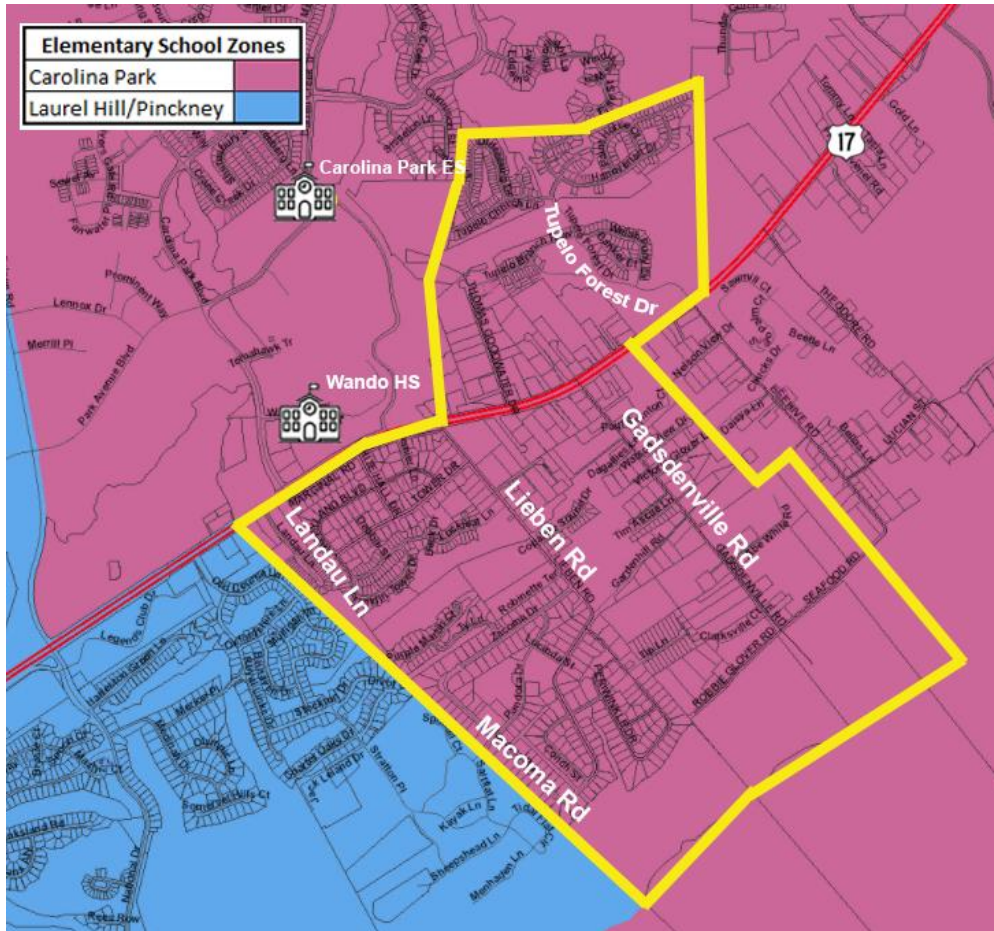
Ethnicity	Count
A	10
B	19
H	15
M	14
W	164
Total	222

Top Attending Schools	Count
Carolina Park ES	202
Jennie Moore ES	8
East Cooper Montessori	3
James Simons Montessori	2

Option 2: (Potential New Zone Map)



Option 2A: North of 17 including all homes off of Tupelo Forest Dr and Thomas Goodwater Dr; South of 17 includes Landau Ln up through Gadsdenville Rd including all of the homes off of Seafood Ln (213 Students)



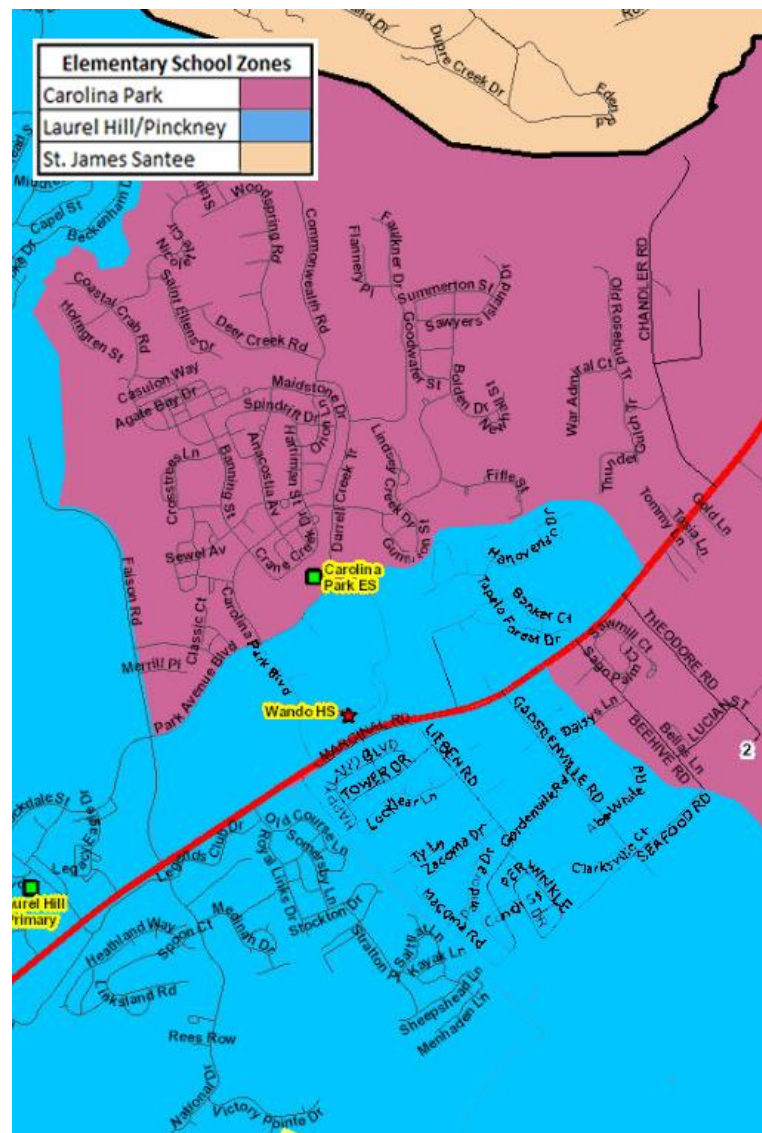
*Based on FY22 data

Grade	Count
K	39
1	32
2	41
3	45
4	44
5	33
Total	234

Ethnicity	Count
A	10
B	30
H	15
M	14
W	165
Total	234

Top Attending Schools	Count
Carolina Park ES	213
Jennie Moore ES	9
East Cooper Montessori	3
James Simons Montessori	2

Option 2A: (Potential New Zone Map)



Traffic Breakdown:

- We do not anticipate any significant changes in traffic flow for any of the options

	Carolina Park/ Grove Apts (Options 1 & 1A)	S of 17-Lieben (Options 1 & 2)	S of 17- Gadsdenville (Options 1A & 2A)	Tupelo/Thomas Goodwater (Option 2 & 2A)
Car	41	65	7	67
Bus	11	22	1	33
Bike	11	0	0	4
Walk	11	0	0	3

*Based on FY23 registrations

Busing:

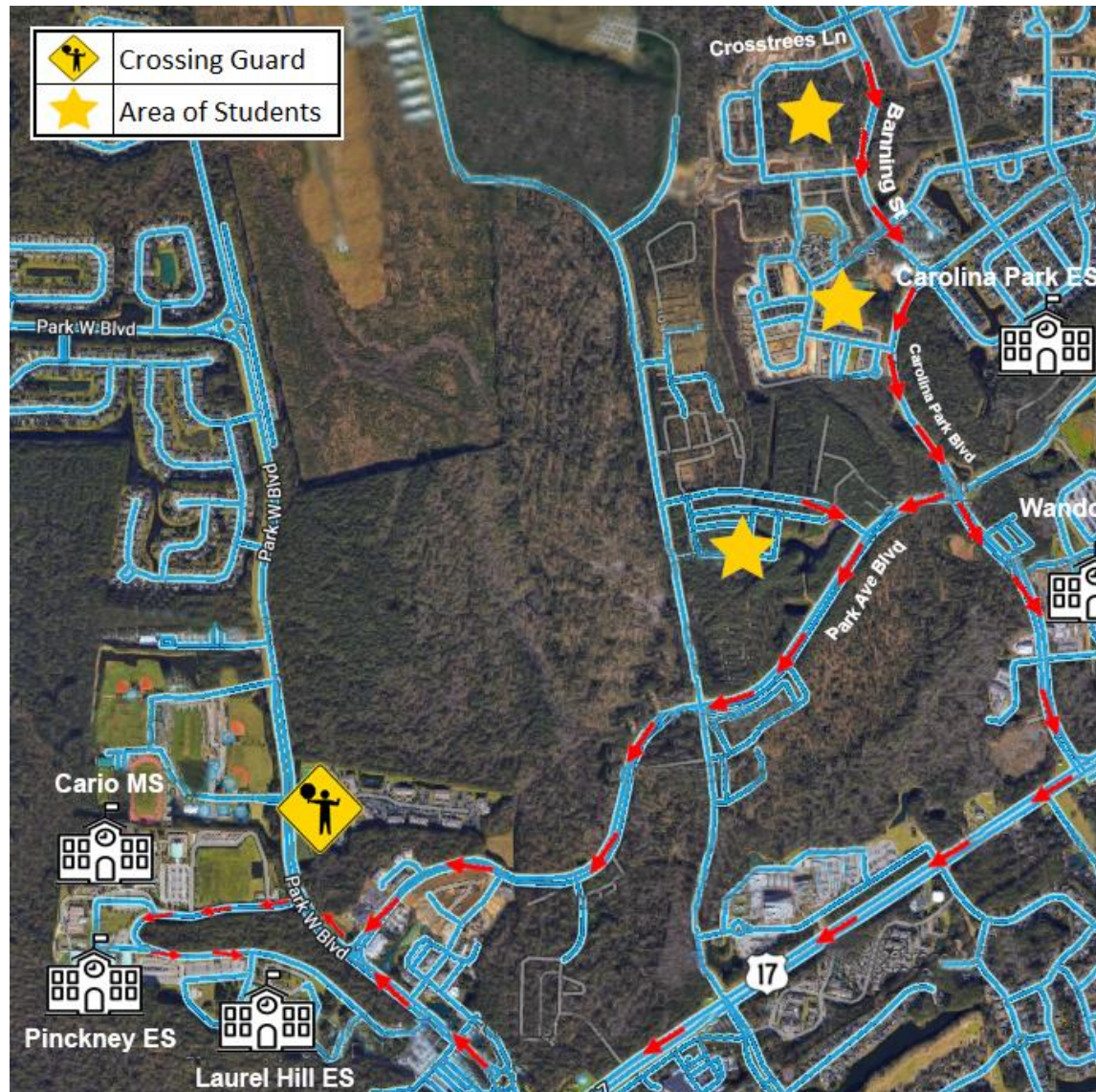
- Options 1 & 1A- potentially 1 additional bus
- Options 2 & 2A- potentially 2 additional buses

Biking:

- All routes include going through the crosswalk at the Madison Condos across from the rec center
- From the end of Banning St to Pinckney: 3.0 miles, 15 min bike ride
- From the Grove Apartments to Pinckney: 2.2 miles, 11 min bike ride
- From Thomas Goodwater to Pinckney: 2.7 miles, 15 min bike ride
- From Oldenburg Rd to Pinckney: 2.7 miles, 18 min bike ride

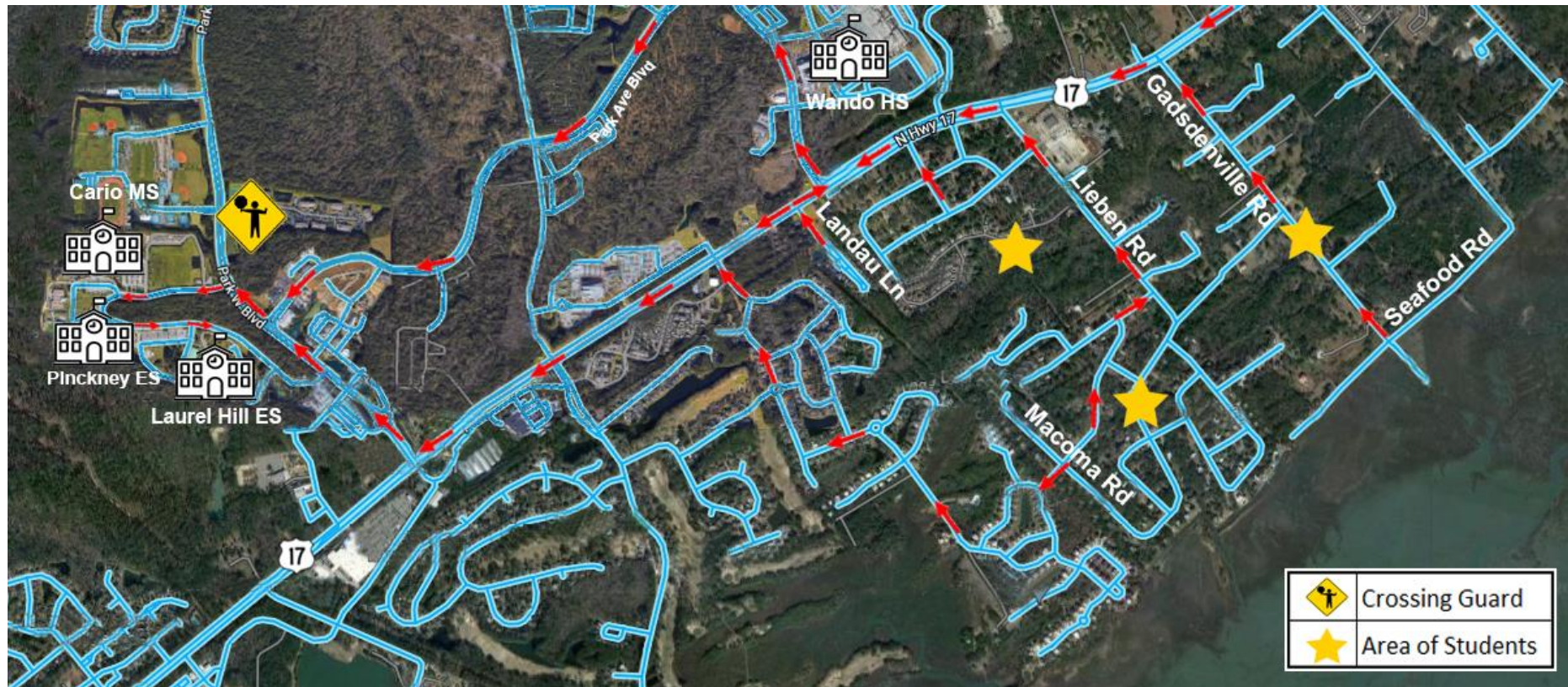
Traffic to LH/CP:
North of 17,
Carolina Park Area

Section of Carolina
Park included in
Option 1 & 1A



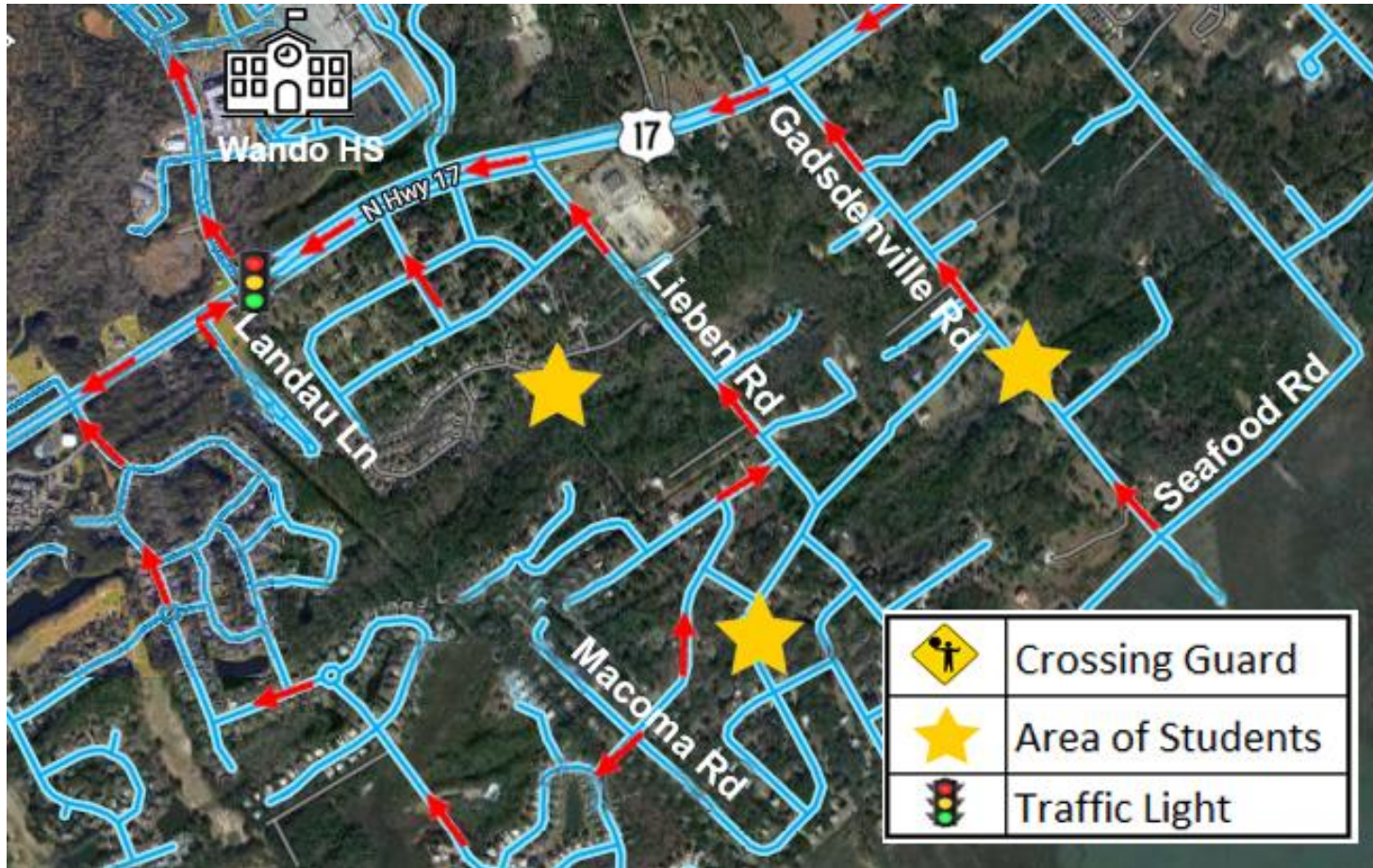
Traffic to LH/CP: South of 17 up through Gadsdenville Rd

Section of South of 17 included in Options 1, 1A, 2, 2A



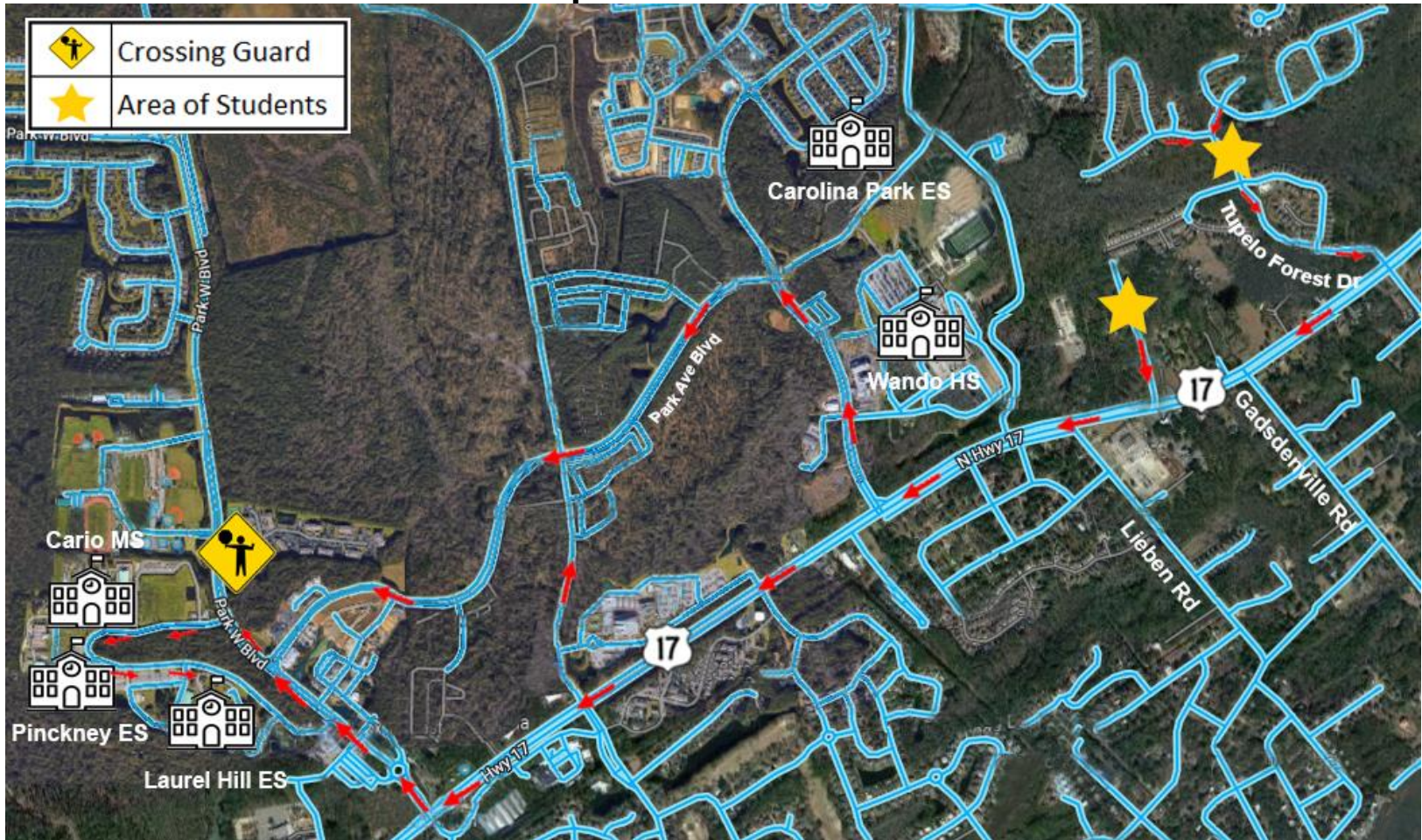
Traffic to LH/CP: South of 17 up through Gadsdenville Rd (Zoomed In)

Section of South of 17 included in Options 1, 1A, 2, 2A



Traffic to LH/CP: North of 17, Tupelo Area

Section of North of 17 included in Options 2 & 2A



As of 8.22.22

Enrollment Growth

Carolina Park:

*Projections are subject to change

Capacity	FY18	FY19	FY20	FY21	FY22	FY23	FY24	FY25	FY26	FY27	FY28
968	657	779	902	874	895	990	1,004	1,011	1,001	994	987

*FY21- 40 CD students moved to LH

*FY22- Zone change effective (some 5th graders grandfathered in)

Laurel Hill:

*Projections are subject to change

Capacity	FY18	FY19	FY20	FY21	FY22	FY23	FY24	FY25	FY26	FY27	FY28
946	657	621	619	539	685	730	730	742	743	737	725

Charles Pinckney:

*Projections are subject to change

Capacity	FY18	FY19	FY20	FY21	FY22	FY23	FY24	FY25	FY26	FY27	FY28
862	768	692	694	619	687	652	661	674	680	679	658

*FY18-FY22 data based on 9-day through 12-day official enrollment counts

*Future forecasts include prior year's totals for CD, EHS & HS

Current Enrollment Numbers: (3-Day Count)

3-Day Preliminary Enrollment	
Carolina Park	964
Laurel Hill	605
Pinckney	627

Additional Slides

D2: All Elementary Zones

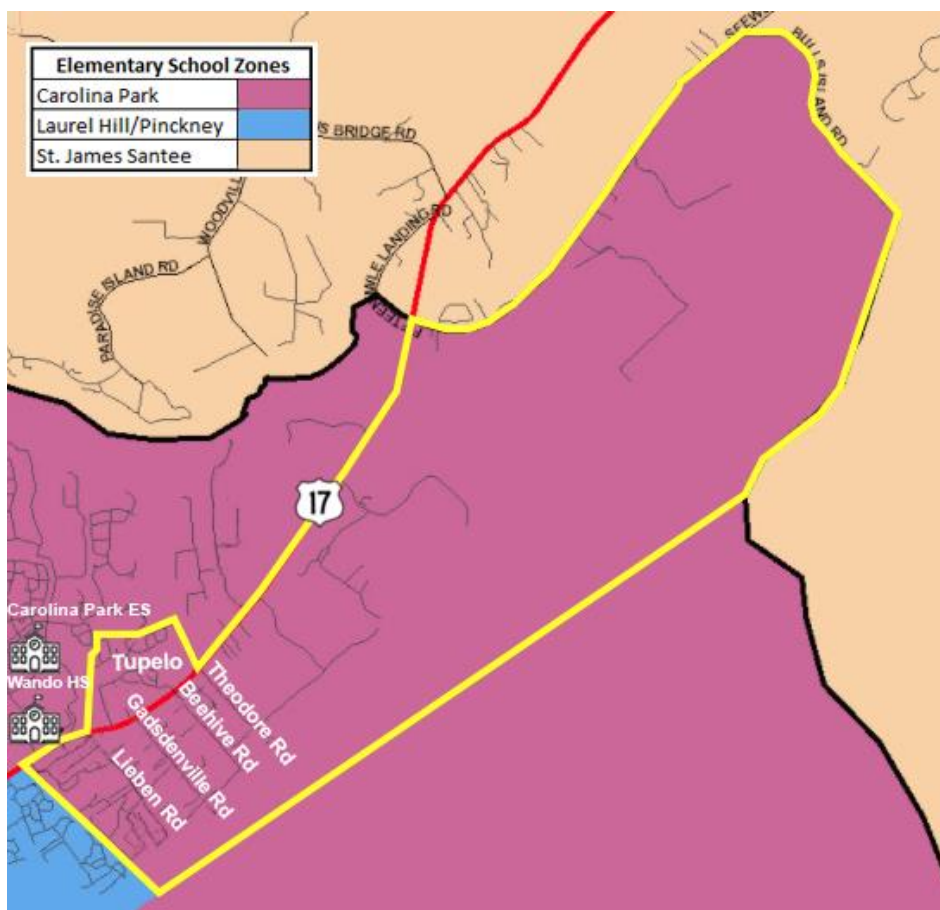
Elementary School Distance Comparison Examples

Street	Zoned School	Distance	Closest ES	Distance	2nd Closest ES	Distance
Astor Dr	JBE	3.9 miles	JME	2.1 miles	BH	2.8 miles
Hidden Cove Dr	JBE	3.7 miles	JME	2.1 miles	BH	2.6 miles
Shady Grove Ln	JBE	3.4 miles	BH	2.5 miles	JME	2.5 miles
Schirmer Ave	MPW	2.5 miles	MPA	1.7 miles	-	-
Pleasant Pines Rd	MPA	2.7 miles	JBE	1.9 miles	-	-
Rockfish Ct	CP/LH	3.1 miles	JME	2.1 miles	-	-

Potential Distances for Families Once Rezone Takes Place

Neighborhood	Street	CPE	Distance	CP/LH	Distance	Difference
Carolina Park	Wilkes Way	CPE	1.2 miles	CP/LH	3.1 miles	1.9 miles
Gadsdenville	Clarksville Ct	CPE	2.3 miles	CP/LH	3.5 miles	1.2 miles
Tupelo	Percheron Dr	CPE	2.8 miles	CP/LH	4 miles	1.2 miles

Option 3: North of 17 including all roads off Tupelo Forest Dr and Thomas Goodwater Dr; South of 17 includes Landau Ln through the end of Carolina Park's zone at Seewee Rd and Bulls Island Rd (252 Students)

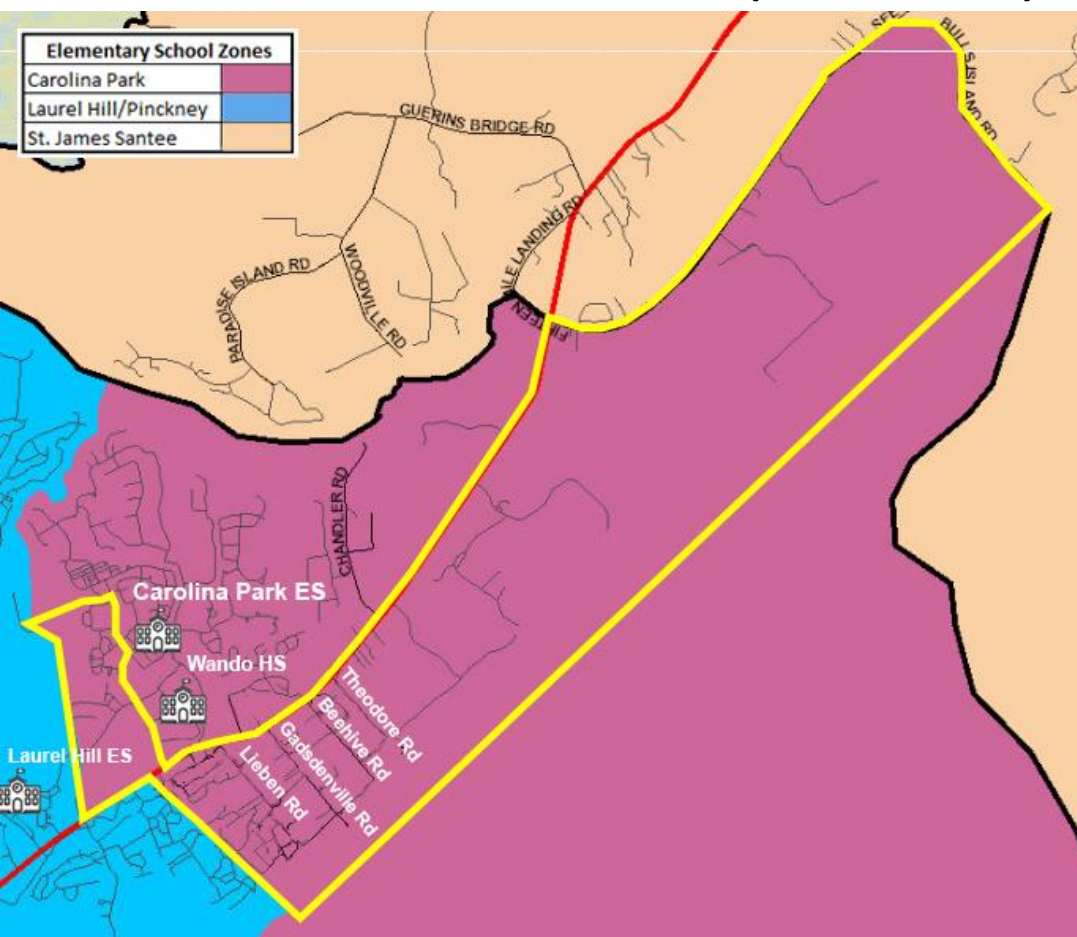


Grade	Count
K	47
1	36
2	48
3	53
4	51
5	40
Total	275

Ethnicity	Count
A	11
B	45
H	17
M	14
W	188
Total	275

Top Attending Schools	Count
Carolina Park ES	252
Jennie Moore ES	9
East Cooper Montessori	3
James Simons Montessori	2

Option 4: North of 17 from Faison Rd to Carolina Park Blvd and Banning St up through Crosstrees Ln; South of 17 includes Landau Ln through the end of Carolina Park's zone at Seewee Rd and Bulls Island Rd (236 Students)



Grade	Count
K	57
1	29
2	42
3	44
4	40
5	41
Total	253

Ethnicity	Count
A	5
B	41
H	14
M	8
W	185
Total	253

Top Attending Schools	Count
Carolina Park ES	236
Jennie Moore ES	4
Sullivan's Island ES	3
Charles Pinckney ES	2
James Simons Montessori	2

Demographic Breakdown After Implementation of Options 1-4:

		Current	Opt 1	Opt 1A	Opt 2	Opt 2A	Opt 3	Opt 4
Carolina Park	A	2.4%	2.5%	2.5%	1.6%	1.6%	1.6%	2.5%
	B	6.8%	6.5%	4.9%	5.7%	4.1%	1.9%	2.7%
	H	4.6%	4.2%	4.3%	3.9%	4.0%	3.9%	4.2%
	M	3.8%	3.7%	3.8%	2.8%	3.0%	3.2%	4.1%
	W	82.4%	83.0%	84.5%	85.9%	87.3%	89.4%	86.4%
Laurel Hill/Pinckney	A	2.6%	2.5%	2.5%	2.8%	2.8%	2.8%	2.5%
	B	2.7%	3.3%	3.9%	3.5%	4.2%	5.0%	4.7%
	H	5.0%	5.1%	5.1%	5.3%	5.2%	5.2%	5.1%
	I	0.2%	0.2%	0.2%	0.2%	0.2%	0.2%	0.2%
	M	3.6%	3.6%	3.6%	4.0%	3.9%	3.8%	3.5%
	W	85.9%	85.2%	84.7%	84.3%	83.6%	83.0%	84.0%

A	Asian
B	Black/African-American
H	Hispanic/Latino
I	American Indian/Alaska Native
M	Two or More Races
P	Native Hawaiian/Other Pacific Islander
W	White/Caucasian