

Applying for the Magnet

Applications are available online, at Cooper Academy, and at the Transfers Office. Priority is given to applications submitted by December 1st, of each school year.

Admissions Criteria

- ◆ Preference will be granted to applicants currently attending a Fresno Unified authorized International Baccalaureate Primary Years Program.
- ◆ All students are welcome to apply. Preference is given to Fresno High Region students. Students are chosen through a lottery system. To inquire about specific criteria please contact the FUSD Transfers Office 559-248-7538



For more information,
contact:

Sandra Auble
Principal
(559) 248-7050
Sandra.Auble@fresnounified.org

Jayne Day
IB Coordinator
(559) 248-7050
Jayne.Day@fresnounified.org

<https://cooper.fresnounified.org/>



Cooper Academy
2277 W. Bellaire Way
Fresno, CA 93705

Phone: 559-248-7050
Fax: 559-224-7255

<http://www.cooper.fresnounified.org>



Application and admission is not limited on the basis of race, color, national origin, sex, disability, sexual orientation, gender, ethnic group identification, ancestry, or color.



IB World School
Middle Years Programme





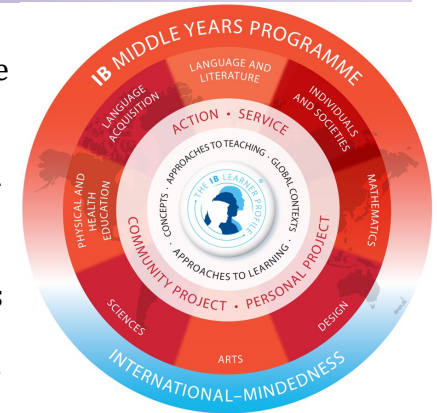
Middle Years Programme at Cooper Academy

Our Mission

The mission of Cooper Academy is to foster a caring and compassionate environment that empowers students to actively engage in rigorous academic learning, develop positive relationships and embrace the differences within their community.

The Program

The IB Middle Years Programme (MYP) is designed to teach students to become independent learners who can discover the relationship between school subjects and the world. The MYP emphasizes the study of eight subject groups: Language and Literature (English), Language Acquisition (Spanish), Individuals and Society (History), Sciences, Mathematics, Arts, Design, and Physical Education as seen through the unique curriculum framework provided by the five Areas of Interaction. Emphasis is on developing international mindedness, written and oral communication, acquisition of a second language, and interdisciplinary units of study.



Project Based Learning

Cooper Academy's IB programme follows a project based learning approach. IB units are planned through a backward mapping model that emphasizes the assessment and rubrics as the criteria that guides the lesson plans and activities. Our assessments are focused on the application of knowledge where students are given a real world scenario to demonstrate knowledge of content and skills learned throughout the unit of study.

While in our Design class, students follow the design cycle in order to identify a real world problem and create a solution by engaging in investigation, planning, taking action, and reflecting through the use of the Design Cycle. Our Design courses are unique to Cooper Academy and other IB World Schools. They help stimulate the creative nature of students as well as stimulate their ability to be analytical thinkers and problem solvers.

Service in Action

In keeping with its mission to “develop inquiring, knowledgeable, and caring young people who help to create a better and more peaceful world,” International Baccalaureate has made Service as Action a fundamental part of its curriculum. IB and Cooper Academy MYP require that all students complete service activities/engagements/experiences over the course of each academic year. This requirement encourages and allows students to become involved in local, national, and international service projects.

The 8th grade year culminates with a community project in which students are provided an important opportunity to collaborate and pursue service learn-

School of Choice

Cooper Academy is a school of choice located within the Fresno High Region serving grades six through eight. Students enrolled at Cooper Academy will encounter the eight MYP subject areas through each of their years at Cooper Academy. The Cooper Academy instructional program is designed to prepare students for successful completion of the IB Diploma through the authorized Fresno High School IB Diploma Programme.

The IB Learner Profile

IB Learners strive to be:

- ◆ Inquirers
- ◆ Knowledgeable
- ◆ Thinkers
- ◆ Communicators
- ◆ Principled
- ◆ Open-minded
- ◆ Caring
- ◆ Risk-takers
- ◆ Balanced
- ◆ Reflective

Approaches to Learning (ATL) Skills

- ◆ Communication
- ◆ Social
- ◆ Self Management
- ◆ Research
- ◆ Thinking