



Lone Oak HS Additions and Renovations

Site Update

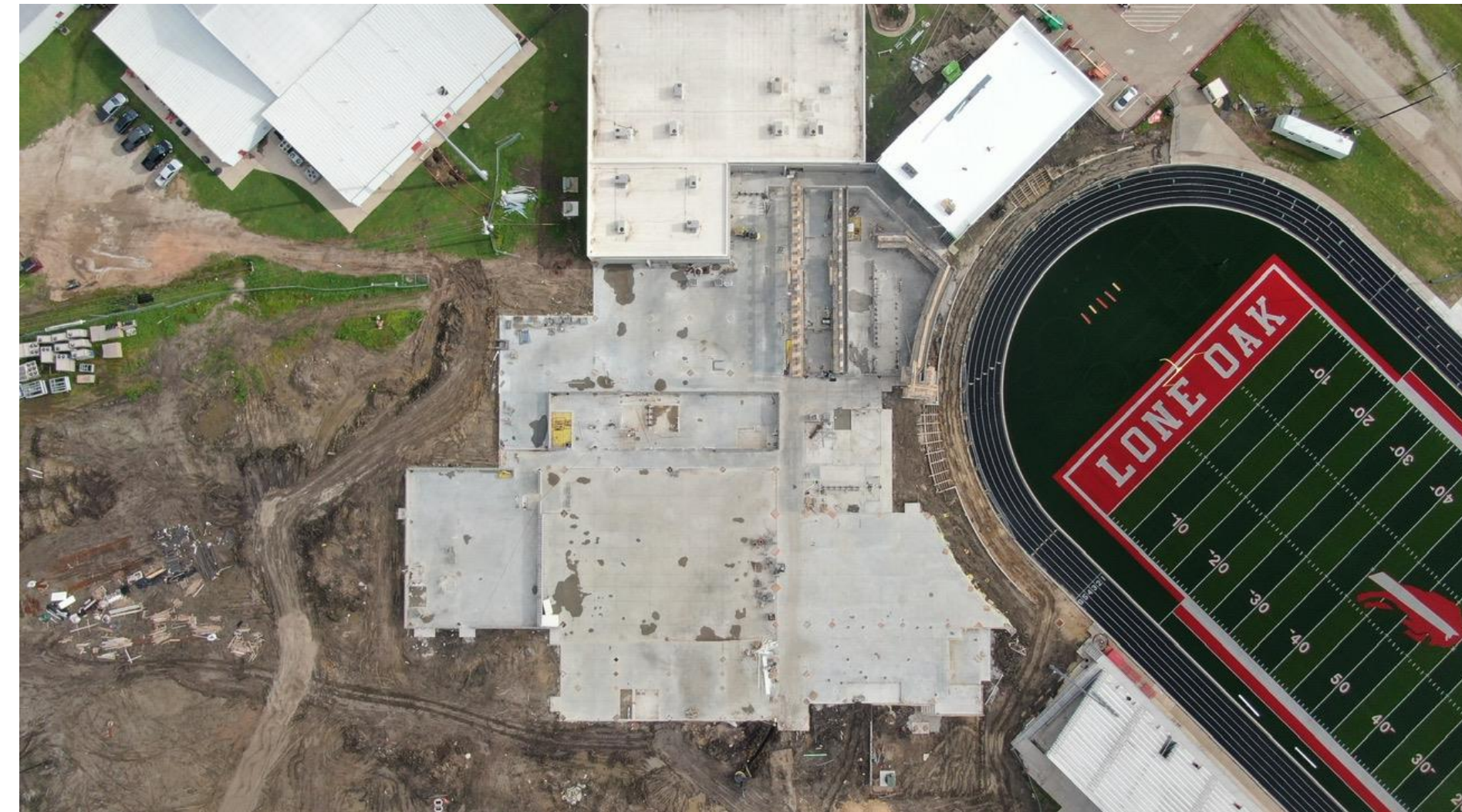
In the upcoming weeks, we will be continuing to finish out the CMU walls around the site, along with erecting steel throughout each area which will then lead to hanging trusses. This is where you will truly see your building start to take shape. Along with steel and CMU, we will be continuing to pour the remaining portions of sidewalks around the track, the plaza area, as well as the service yard.



Site Photos



Site Photos

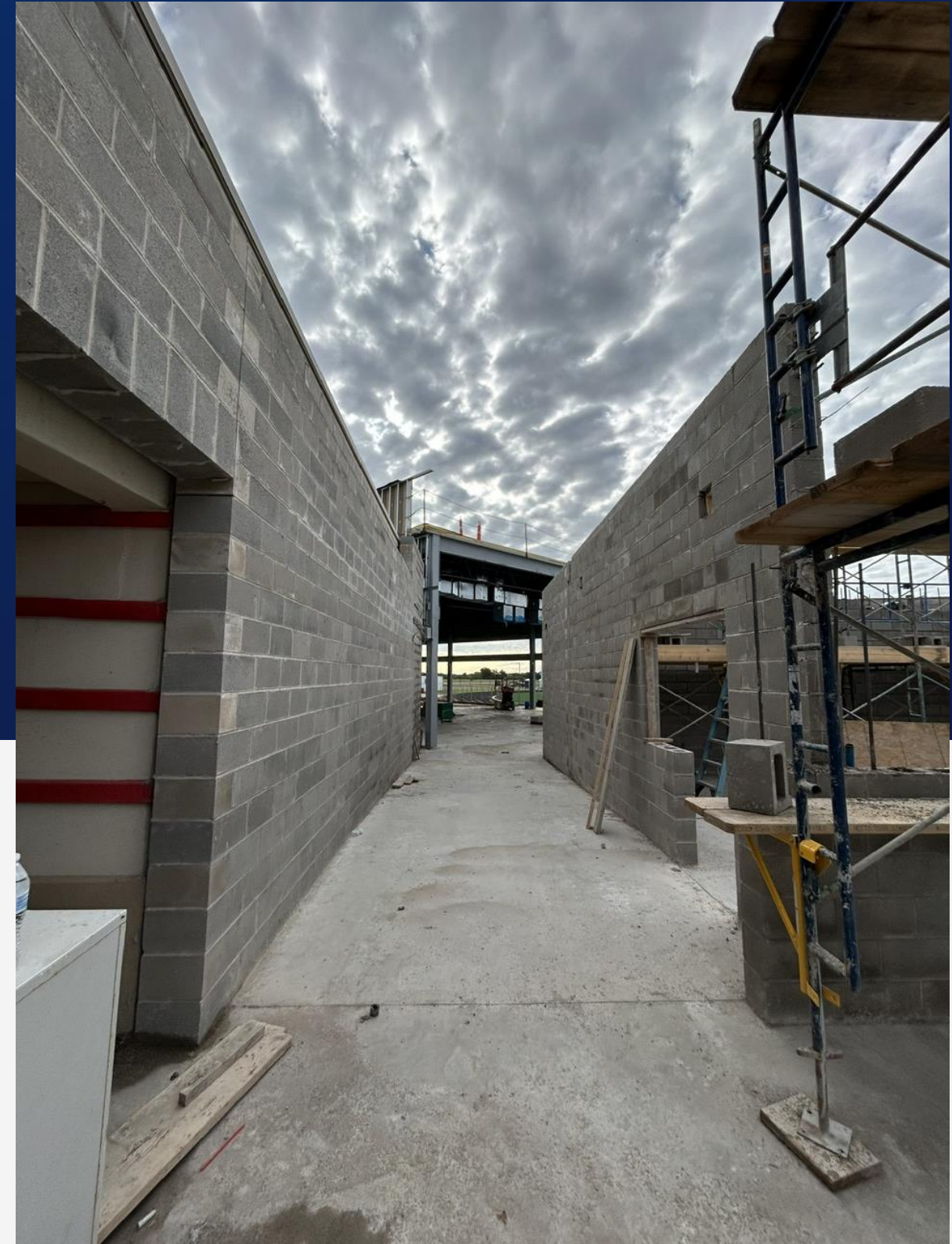


Area "E" Weight Room Construction Update

Rough in electrical and plumbing have been installed, sheathing has been installed, and waterproofing has started.



Area "E" Progress Photos



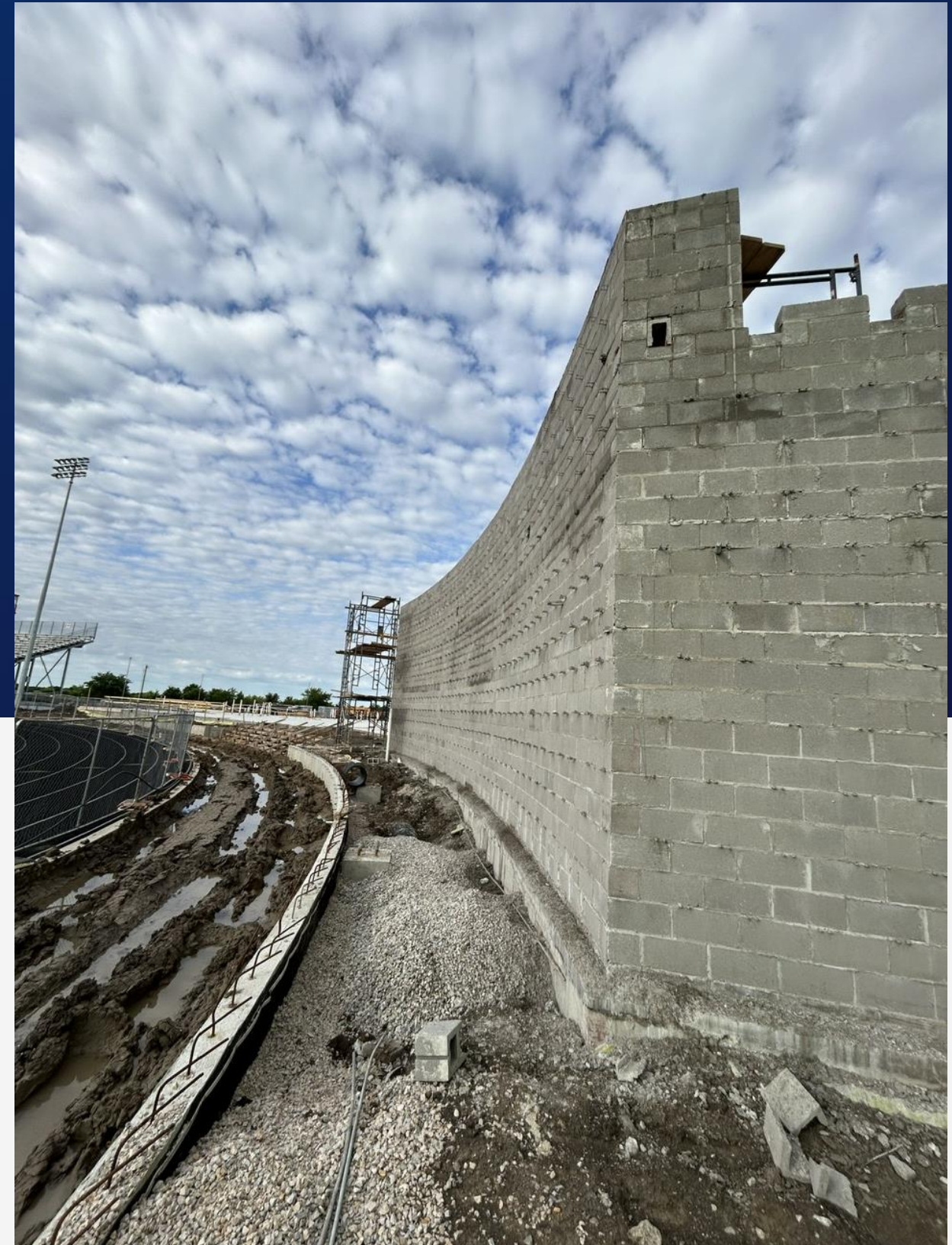
Area "D"

Construction Update

Finishing CMU curved wall and moving into interior structural walls. Continuing with plumbing, electrical, and preparing for more steel installation next week.



Area "D" Progress Photos



Area "C"

Construction Update

Steel for area C is being delivered and staged for install. We are laying out frame walls and continuing plumbing.



Area "C" Progress Photos



Area "B"

Construction Update

We are working to get steel on site for area B, while continuing to install CMU and monitor electrical and plumbing within the walls.



Area "B" Progress Photos



Area "A"

Construction Update

We are continuing to install plumbing for bathrooms, laying out frame walls, and waiting for steel delivery.



Area "A" Progress Photos

