

# Community Forum

## Bullying and Harassment

May 8, 2024



# Welcome

# Greeting and Introduction

Dr. Andrew J. Sanko  
Superintendent of Schools

- Bullying and harassment education is a priority.
- Objective is to inform and educate community.
- Goal is to give parents tools and resources to help both students and families.



# Goals for Tonight's Forum

Anthony Devlin  
Director of Special Services

- What is Bullying?
- Proactive Measures at Classroom and District Levels
- Notification and Support
- Investigation and Resolution
- Community Resources (Cyber-Bullying/Police/Parent Tips)

# Tonight's Speakers:

- **Anthony Devlin,, Director of Special Services**
- **Dr. Kasey Black, Supervisor of Student Services**
- **Liz Potash, CR Health and PE Curriculum Coordinator**
- **Stephanie Warshaw, Council Rock Social Worker & Home School Visitor**
- **Laurie Zila, CARES Coordinator, Newtown Middle School**
- **Emily Otero, Principal of Churchville Elementary School**
- **Tim Long, Principal of Newtown Middle School**
- **Susan Gormley, Assistant Principal of Council Rock High School South**
- **Nate Scott, Assistant Principal of Council Rock High School North**
- **Don Mihalek, Director of Safety & Security**
- **Ashley Towhey, Chief of Juvenile Prosecution**
- **Dante Montella, County Detective**



### Council Rock School Board Policy 249 :

**Bullying** means a communication or act that is intentional and delivered in electronic, written, verbal or physical form to another student or students, which occurs in or is related to a school setting or activity that is severe, persistent or pervasive and has the effect of doing any of the following::

1. Substantially interfering with a student's education; or
2. Creating of an intimidating or threatening school environment; or
3. Substantially disrupting the orderly operation of the school

Bullying, as defined in this policy, includes communications delivered through the Internet, including Social Media (Cyberbullying).

**School setting** means in the school, on school grounds, in vehicles transporting school students, at any district-assigned bus stop, or at any activity sponsored, supervised or sanctioned by the school.

## Council Rock School Board Policy 248 :

**Harassment** For purposes of this policy, generally, harassment may consist of verbal, written, graphic or physical conduct relating to an individual's race, color, national origin/ethnicity, sex, gender, age, disability, sexual orientation or religion when such conduct:[\[3\]](#)

1. Is sufficiently severe, persistent or pervasive that it affects an individual's ability to participate in or benefit from an educational program or activity or creates an intimidating, threatening or abusive educational environment; or
2. Has the purpose or effect of substantially or unreasonably interfering with an individual's academic performance; or
3. Otherwise adversely affects an individual's learning opportunities.

Harassment takes many forms, including but not limited to: verbal conduct, physical conduct, visual conduct, threats or demands, retaliation, and denial of any of the benefits of a complete educational program for an impermissible reason as defined by this policy.



## Bullying Prevention through Schoolwide Positive Behavior Supports

### **What is Bullying?**

Dan Olweus, provides us with this commonly accepted definition for bullying in his book, *Bullying at School: What We Know and What We Can Do*:

"A person is bullied when he or she is exposed, repeatedly and over time, to negative actions on the part of one or more other persons, and he or she has difficulty defending himself or herself."

This definition includes three important components:

1. Bullying is aggressive behavior that involves unwanted, negative actions.
2. Bullying involves a pattern of behavior repeated over time.
3. Bullying involves an imbalance of power or strength.

### **How does SWPBS help?**

- Rules help to establish structure in unstructured areas. This structure reduces the possibility for students to exhibit bullying behaviors.
- Throughout the year, students are explicitly taught how to be respectful to one another. This occurs through the use of children's literature, role-playing, Restorative circles, and assemblies.
- Social reinforcements for bullying are reduced when the entire school is working toward the same goals.
- Specific assertiveness skills are taught through school guidance lessons and school-wide programs.

# A Proactive Approach

Dr. Kasey Black, Supervisor of Special Services

- Teaching skills:
  - Conflict versus bullying
  - Conflict management
  - Empathy and kindness
  - Problem solving
- PBIS □ identify, teach, & reward expected behaviors
- MTSS Screeners □ identify prevalence & patterns
- Responsive Classroom □ build community
- Restorative Practices □ accountability



# Health Education Curriculum

Liz Potash, Health & Physical Education Curriculum Coordinator

## PA House Bill No. 1067

- School policies related to bullying
- Develop and implement bullying prevention, intervention and education programs.
- Defines bullying as *an intentional electronic, written, verbal or physical or a series of acts...*

## Health and Physical Education PA Standards

- 10.1.9.A. *Concepts of Health*: Analyze factors that impact growth and development between adolescence and adulthood, including relationships and interpersonal communication
- 10.2.9.C. *Healthful Living*: Analyze media health and safety messages and describe their impact on personal health and safety.

# Curricular Tie-Ins

Liz Potash, Health & Physical Education Curriculum Coordinator

## 10th Grade Health Curriculum: Diversity & Respect Unit

- Define bullying, including cyberbullying
- Characteristics of a bully
- Effects on a victim: physical, social, emotional and academic
- Resources for reporting, school policy and how to support

**Physical Education National Standard 3: Develops social skills through movement.** *Through learning experiences in physical education, students develop the social skills necessary to exhibit empathy and respect for others and foster and maintain relationships. In addition, students develop skills for communication, leadership, cultural awareness, and conflict resolution in a variety of physical activity settings.*



# Supports for Bullying/Harassment

Stephanie Warshaw, Council Rock Social Worker

- Contact school principal, counselor, or teacher
- Safe2Say Something Referral
  - <https://www.safe2saypa.org/>
- Bucks County behavioral health resources
  - Prevention vs. Intervention
  - We can direct you to the appropriate resource as necessary.

# How do I contact Council Rock?

Parents and guardians often wonder where to turn if they have a question or concern regarding their child or other school issues. Use this guide to help you navigate through our District to find the quickest way to resolve your issue. This chain of communication will help us be most responsive to your needs, and ensures the appropriate personnel are helping with a resolution.



**WHERE TO START? Use this guide when you have an issue or question to resolve:**

## 1 Classroom Problem?

**Start with your child's teacher.** They are in the best position to address classroom-related issues and know your child and family best. If the problem is beyond the teacher's area of expertise or control, the teacher will refer you the school counselor or correct staff member.

## 2 Not able to resolve your problem with the teacher?

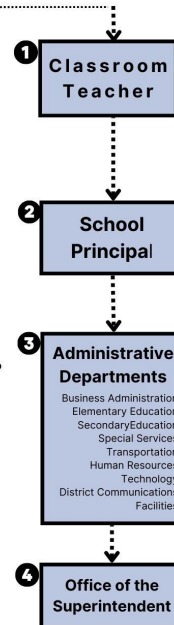
**Next, try the school principal,** who will usually be able to resolve your problem. You can call or email your school principal directly. A listing of all CR schools can be found on the Council Rock website.

## 3 Not able to resolve your problem at the building level?

**You might be referred to a member of the Council Rock Central Office staff or administration.** Consult our list of departments at [www.crsd.org](http://www.crsd.org) to determine the most appropriate person or department to contact, or call the Council Rock main number at 215-944-1000.

## 4 Problem not resolved through the above channels?

Contact the Office of the Superintendent at 215-944-1000.



## Tax Questions?

Call your township office or the CR Tax office at 215-944-1090



# CARES

## Support for Safe and Welcoming Schools

Laurie Zila, Council Rock Counselor

- Identify high risk students
- Gather school and family data
- Work with parents, teachers, community supports
- Connect students to foster community
- Teach positive relationship and self-care skills

# Elementary School Level

Emily Otero, Principal, Churchville Elementary School

- **Building communities around "Belonging"**
- **Teachable moments**
- **PBIS and Data Driven Support**
- **Use of Social Stories and Counselors**
- **Restorative Practices**
- **Consequences**



# Middle School Level

Tim Long, Principal, Newtown Middle School

- Developmentally testing boundaries
- Most issues are coming from outside and brought into school
- Peer and peer relationships
- Restorative Practices
- Expectation clarity
- Consequences

# High School Level

Nate Scott, Assistant Principal, Council Rock HS South  
Sue Gormley, Assistant Principal, Council Rock HS South

- Getting students ready for “adulthood”
- Helping students find others with similar interests
- Preparing for post-graduation
- Build a broadening understanding of people, differences
- Consequences
- Keep an eye on your student



# How do I contact Council Rock?

Parents and guardians often wonder where to turn if they have a question or concern regarding their child or other school issues. Use this guide to help you navigate through our District to find the quickest way to resolve your issue. This chain of communication will help us be most responsive to your needs, and ensures the appropriate personnel are helping with a resolution.



**WHERE TO START? Use this guide when you have an issue or question to resolve:**

## 1 Classroom Problem?

**Start with your child's teacher.** They are in the best position to address classroom-related issues and know your child and family best. If the problem is beyond the teacher's area of expertise or control, the teacher will refer you the school counselor or correct staff member.

## 2 Not able to resolve your problem with the teacher?

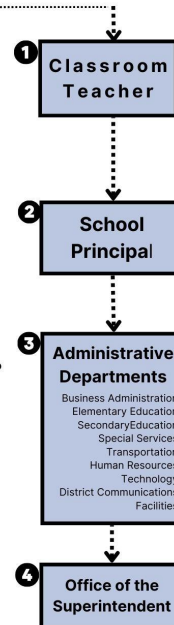
**Next, try the school principal,** who will usually be able to resolve your problem. You can call or email your school principal directly. A listing of all CR schools can be found on the Council Rock website.

## 3 Not able to resolve your problem at the building level?

**You might be referred to a member of the Council Rock Central Office staff or administration.** Consult our list of departments at [www.crsd.org](http://www.crsd.org) to determine the most appropriate person or department to contact, or call the Council Rock main number at 215-944-1000.

## 4 Problem not resolved through the above channels?

Contact the Office of the Superintendent at 215-944-1000.



## Tax Questions?

Call your township office or the CR Tax office at 215-944-1090

# Safety & Security

Don Mihalek, Supervisor of Safety and Security

- **Ongoing partnership with law enforcement**
- **Behavioral Threat Assessment Approach (per PA law)**
- **SRO Program Builds Rapport**
- **Formal vs. Informal Complaint**



# Cyberbullying

Ms. Ashley Towhey, Chief of Juvenile Prosecution

Mr. Dante Montella, County Detective

Bucks County District Attorney's Office

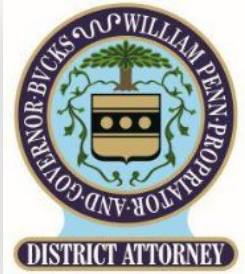
# Bridging the Gap

## iSmart Parenting





# Helping your child/teen engage in positive and valuable online interactions.



Ashley C. Towhey  
Chief of Juvenile Prosecution  
Bucks County District Attorney's Office

Detective Dante N. Montella  
Bucks County District Attorney's Office

Special Thanks: **NOVA**  
SUPPORT VICTIMS. STOP VIOLENCE.

# Cyber Harassment – 18 § 2709(a.1)



- With the intent to harass, annoy or alarm,
  - Engages in a **continuing course of conduct**
  - By **electronic means**
  - **Directly** to a child OR by **publication** through electronic social media
    - **Seriously disparaging** statement or opinion about a child's physical characteristics, sexuality, sexual activity or mental/physical health; OR
    - Threat to **inflict harm**.

## Bullying opportunities-

- technology:
  - Mobile Devices
  - Computers
  - Gaming Systems
- tools:
  - social media platforms
  - text messaging
  - live chat
  - websites
  - live streaming
  - location tracking





What to do if you are cyberbullied...

stop • block • tell

# If you are aware of Cyber Harassment



## The power of the Upstander

### ...Stand up and opt out

- Refuse to pass along messages
- Tell friends to stop
- Block communications with the cyberbully
- Report to a trusted adult



# Challenges of Immediate Access

- Need for impulse control
- Harder to self regulate
- Approval seeking



BEFORE you...



**T = TRUE?**

**H = HELPFUL?**

**I = INSPIRING?**

**N = NICE?**

**K = KIND?**

# Be Smart, Be Safe



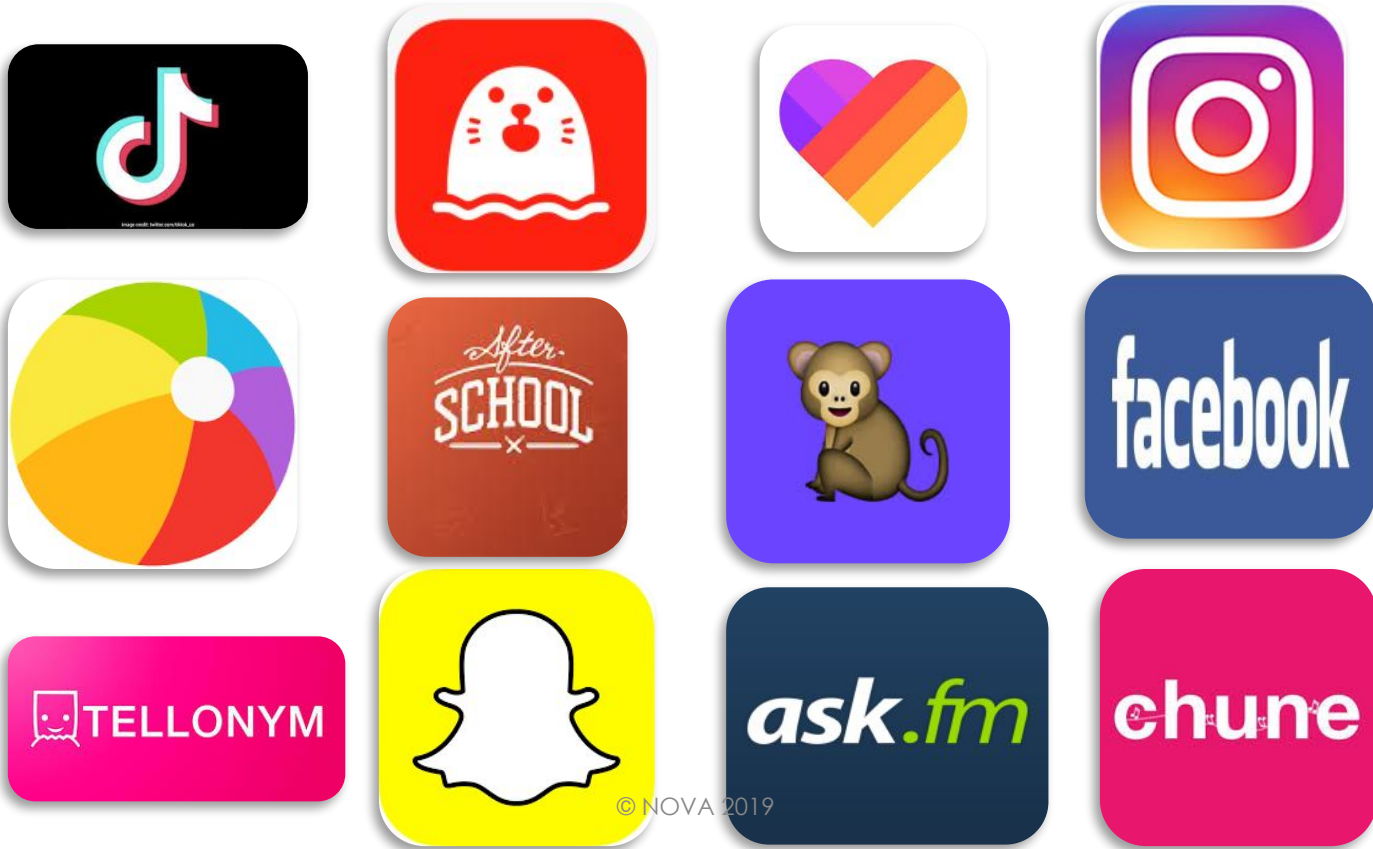
Not everyone is who they say they are!

- **Report anyone who:**

- Asks you to send your picture to them
- Sends you inappropriate / revealing pictures or videos
- Talks to you about adult things
- Tells you not to tell your parent
- Asks to meet you in person



# SOCIAL MEDIA APPS



# Instagram

- Enhances photos and videos with cool effects
- Capability to share them across a number of social media platforms
- Photos are public and may have location information unless privacy settings are adjusted
- As of 2016, users can **live-stream video** and video streams and selected private photos will disappear, [Snapchat](#) style.
- Read the app's privacy policy





# Tik Tok

- A rising **live stream app**
- Allows users to **broadcast live video to online friends** and is made by the same developers as [musical.ly](https://musical.ly)
- As with any live-streaming service, there are concerns about what kids might see, what sort of information kids may give out, and the potential for bullying or inappropriate comments from viewers



# Snapchat

- Sends photos, texts and videos and in 10 seconds ...poof...they are gone ... **OR SO THEY THINK!**
- Offers **video chat**
- Several third-party programs easily intercept and store any Snaps sent to the user and users can play Snaps as long as they'd like until they exit that Snap (Casper, Snap Saver, Phantom)
- Snap Map – share your location with an “Actionmoji” every time you open the app





# Free Message Apps

- Kik, WhatsApp, Oovoo, Line
- **Do Not Need Phone #**
- Send photos, videos, voice recordings, and group chat



# Vault Apps

- Storage apps
  - Photos
  - Videos
  - Other materials
- Password protected
- Calculator+, Calculator%, Best Secret Folder





# Games



- These platforms seek ways to connect with others:
  - Email
  - Text chat
  - Broadcast text
  - Voice chat
  - Video chat
- Discord
  - App and site that allows gamers to connect via text/voice/video
  - Easily viewable adult content
  - Ability to chat privately with strangers

# Xbox Live



- Identical capabilities as the computer
- Can be accessed by and can access every network resource
- Most games are being expanded to be used from cell phone and tablets
- Call of Duty – 2003 to 2013 – made \$10 billion
  - Call of Duty 3 made more money in the first 10 days after its release than "Avatar" made in its entire international run

- These platforms seek ways to connect with others:
  - Email
  - Text chat
  - Broadcast text
  - Voice chat
  - Video chat

- **The average gamer is 31 years old**
- **Almost half of gamers are women over 18**
- **59% of Americans play video games**
- **160 million games**
- **\$21 billion of revenue**

**2019 – Avatar-makers**

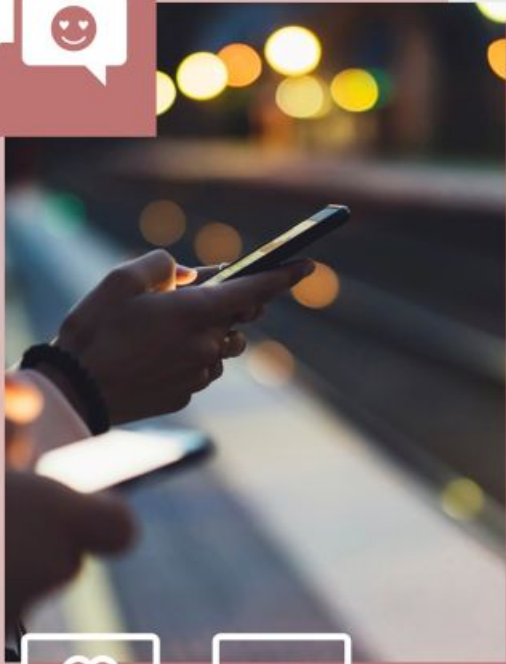
**IMVU: 3D Avatar Creator and Chat**

**Zepeto**

# What is your child's/teen's digital footprint







# Online Enticement

**Online enticement** involves an individual communicating with someone believed to be a child via the internet with the intent to commit a sexual offense or abduction and includes [sextortion](#).



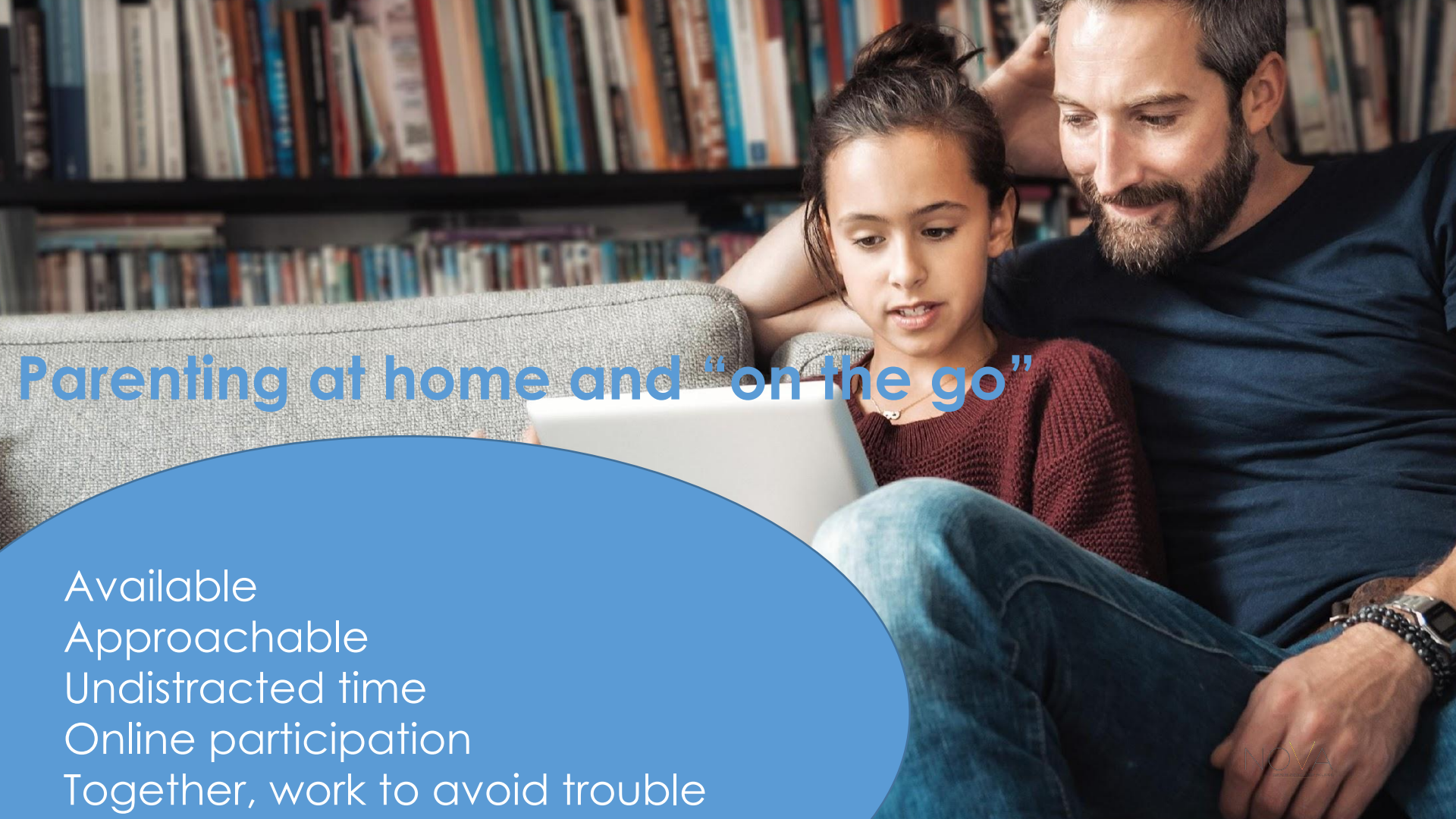
# Sextortion

**Sextortion** is a form of child sexual exploitation where children are threatened or blackmailed, most often with the possibility of sharing with the public nude or sexual images of them, by a person who demands additional sexual content, sexual activity, or money from the child. This crime may happen when a child has shared an image with someone.

# What can you do

- Do not comply with the demands
- Report it to the app
- Do not delete account
- Visit:  
[MissingKids.org/gethelpnow/isyoudisplayexplicitcontentoutthere](https://MissingKids.org/gethelpnow/isyoudisplayexplicitcontentoutthere)
- Report to [CyberTipline.org](https://CyberTipline.org)





## Parenting at home and “on the go”

Available  
Approachable  
Undistracted time  
Online participation  
Together, work to avoid trouble

# Parenting at home and “on the go”



## Points for discussion

- Peer pressure
- Unintended consequences for others
- Unintended consequences for themselves
- When your child/teen is the victim

# Thank you.

