

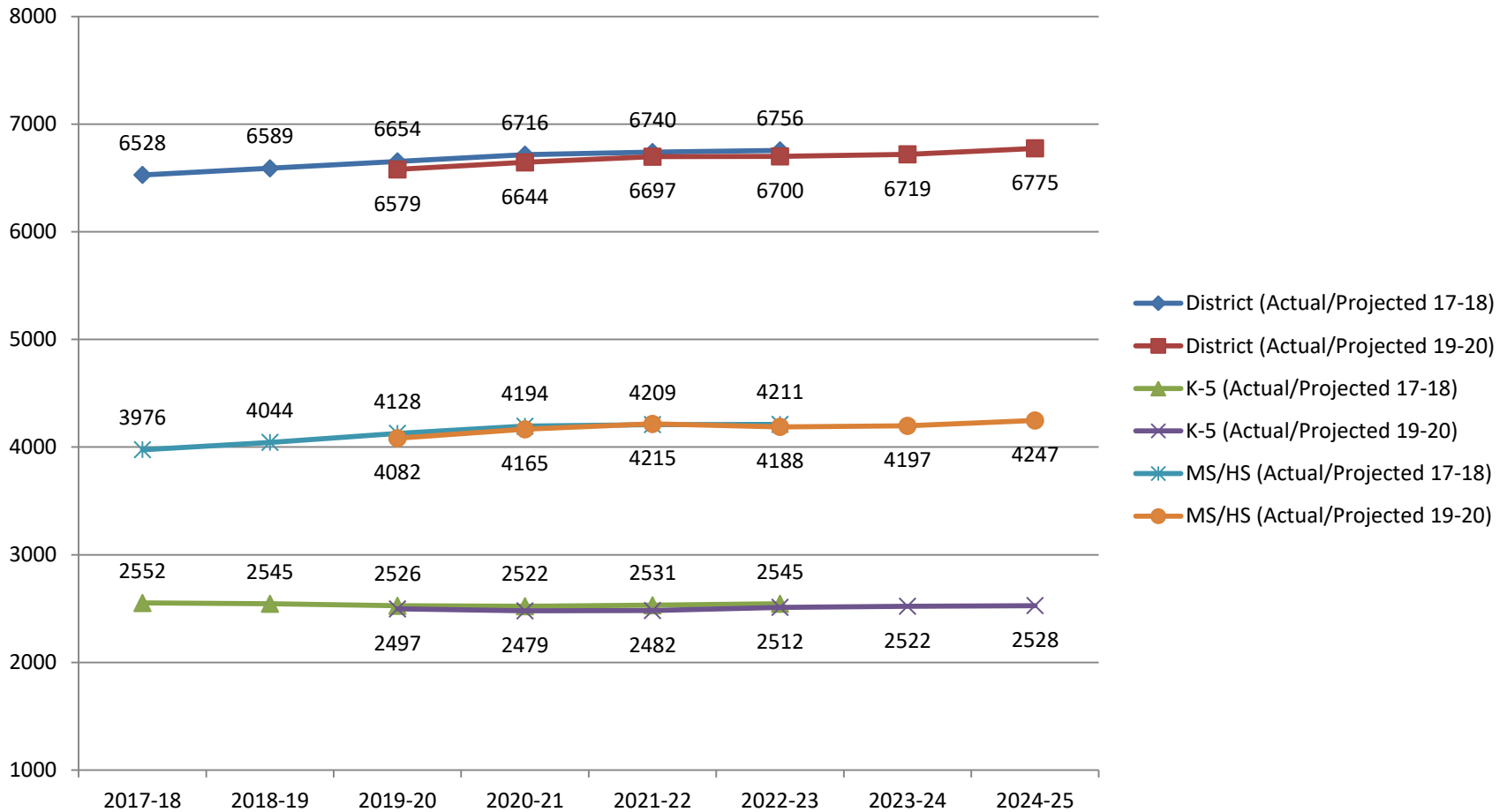
# School Enrollments and the Optional Zone

## Update, Analysis, and Future Considerations

Board of Education Presentation, November 18, 2019

Dr. Stephen C. Lando, Assistant Superintendent for Secondary Education

# District-wide Enrollment Projections Remain Very Accurate...



# Attractions - Exit 33

E.M. Baker – 677

John F. Kennedy - 410\*

Lakeville/Parkville - 869\*

Saddle Rock – 541

North Middle School- 821

South Middle School – 792

North High School - 1,188

South High School - 1,249

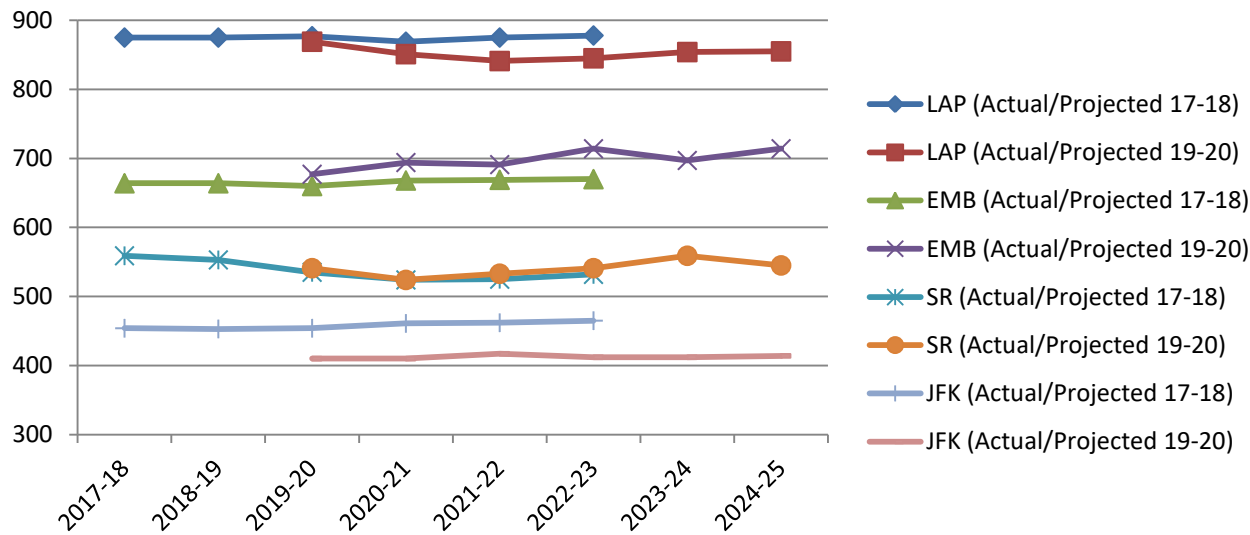
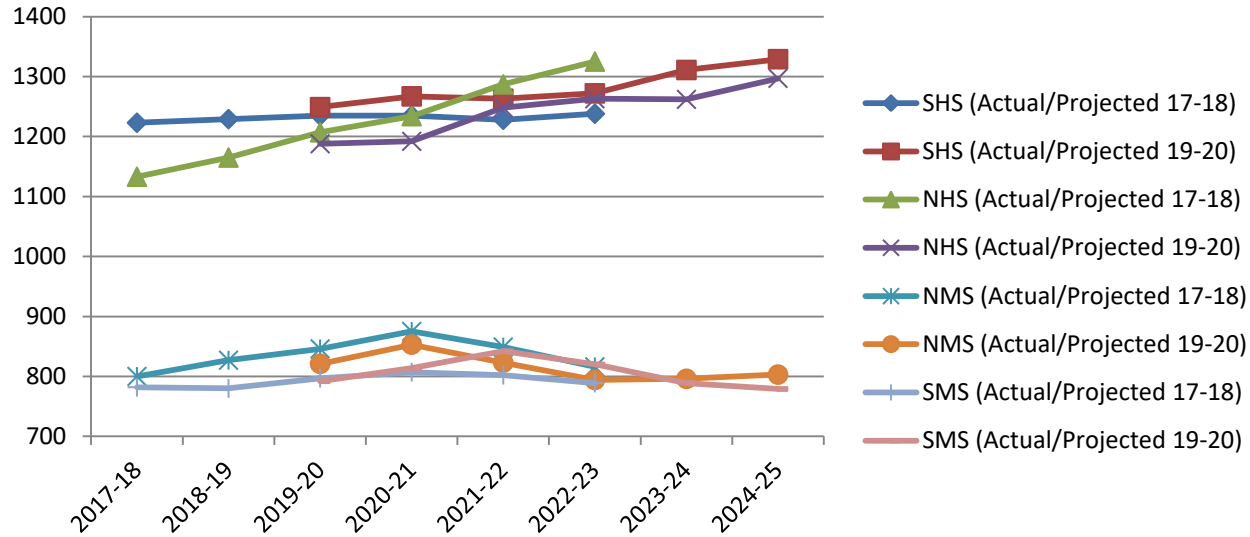
Village School - 35

# Comparison of 5-Year Projections

School	2017-18	2018-19	2019-20	2020-21	2021-22	2022-23	2023-24	2024-25
SHS (Actual/Projected 17-18)	1223	1229	1235	1235	1228	1238		
SHS (Actual/Projected 19-20)			1249	1267	1263	1272	1311	1329
NHS (Actual/Projected 17-18)	1133	1165	1207	1234	1287	1325		
NHS (Actual/Projected 19-20)			1188	1192	1248	1263	1262	1297
NMS (Actual/Projected 17-18)	800	827	846	875	849	816		
NMS (Actual/Projected 19-20)			821	853	823	794	796	803
SMS (Actual/Projected 17-18)	782	780	797	807	802	789		
SMS (Actual/Projected 19-20)			792	814	842	820	789	779
Village (Actual/Projected 17-18)	38	43	43	43	43	43		

School	2017-18	2018-19	2019-20	2020-21	2021-22	2022-23	2023-24	2024-25
LAP (Actual/Projected 17-18)	875	875	877	869	875	878		
LAP (Actual/Projected 19-20)			869	851	841	845	854	855
EMB (Actual/Projected 17-18)	664	664	660	668	669	670		
EMB (Actual/Projected 19-20)			677	694	691	714	697	714
SR (Actual/Projected 17-18)	559	553	535	524	525	532		
SR (Actual/Projected 19-20)			541	524	533	541	559	545
JFK (Actual/Projected 17-18)	454	453	454	461	462	465		
JFK (Actual/Projected 19-20)			410	410	417	412	412	414

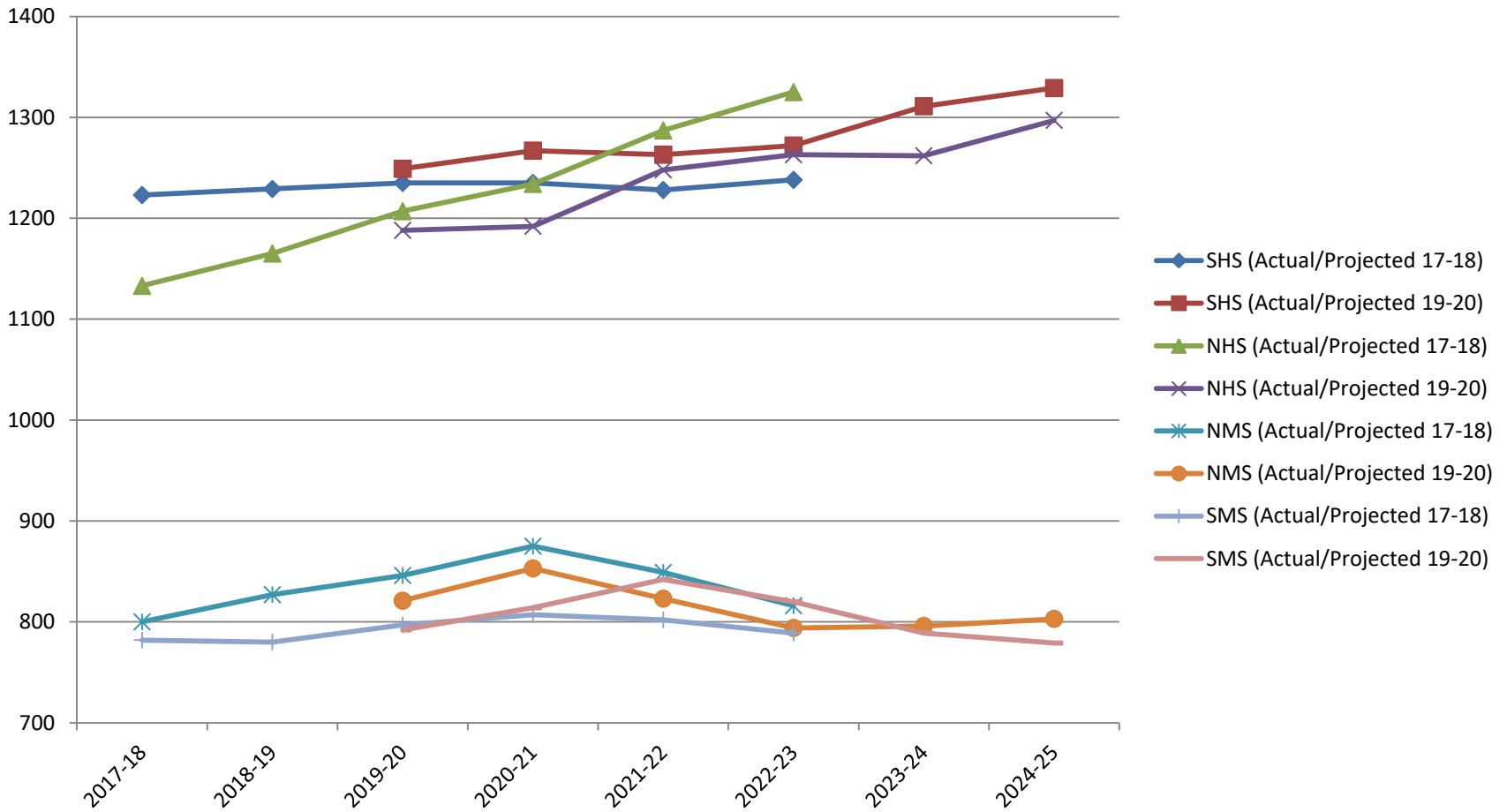
# Comparison of 5-Year Projections



# Guiding Questions

- Did the Optional Zone adjustment work?
- Should the Optional Zone be adjusted further?
- What should be done about enrollment shifts?
- How can we accommodate the increases in enrollment at our two large high schools?
- What plans should be made for possible new construction?

# -Did the Optional Zone adjustment work? -Should the Optional Zone be adjusted further?



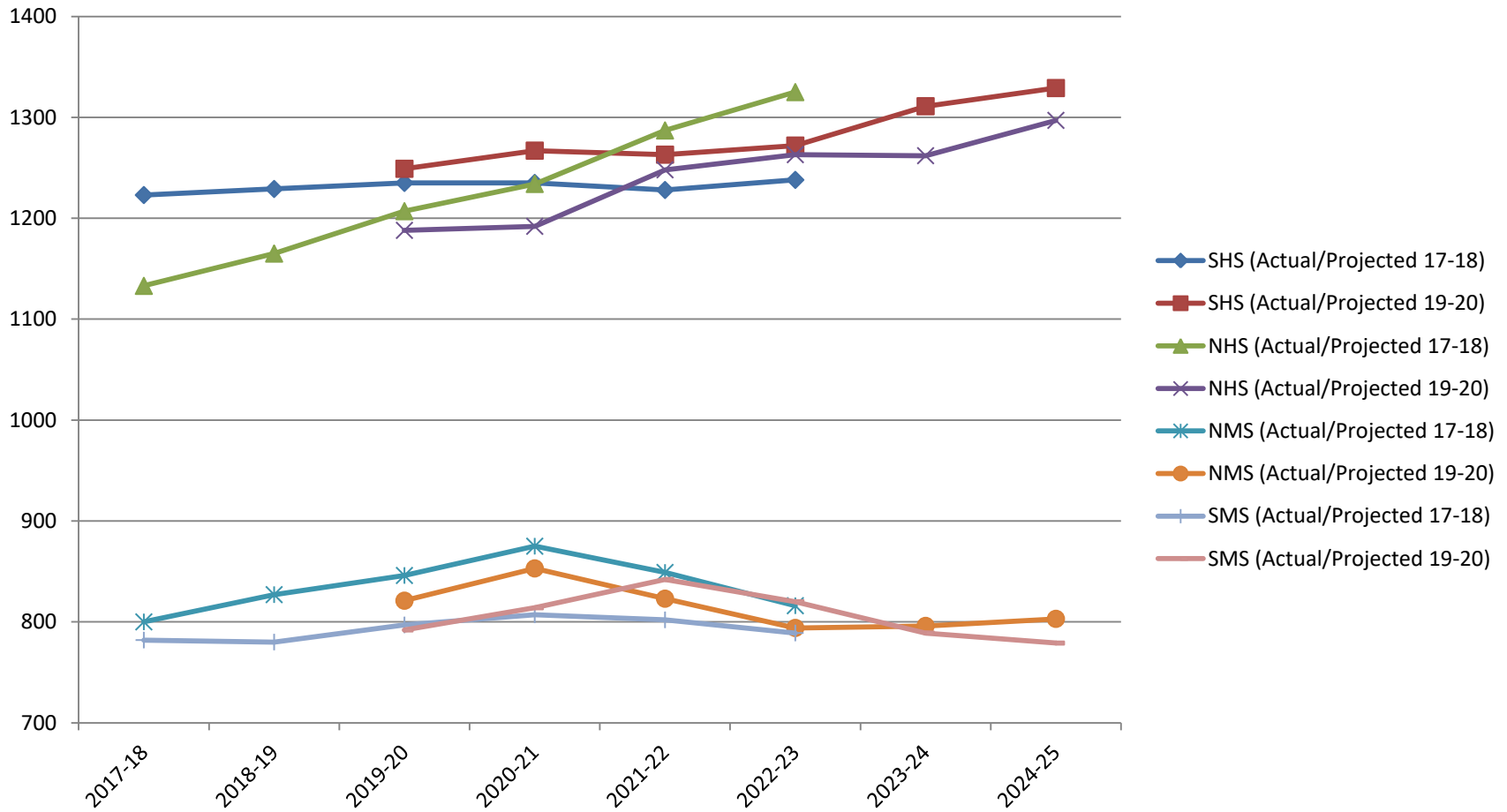
# -What should be done about enrollment shifts?

Elementary Section Needs Based on Board Guidelines 2019-2020 through 2024-2025						
	2019-2020	2020-2021	2021-2022	2022-2023	2023-2024	2024-2025
E.M. Baker	35	36	36	38	38	38
J.F. Kennedy	27	28	28	28	28	26
Lakeville/Parkville	46	46	45	46	46	46
Saddle Rock	31	33	33	33	36	35
Total	139	143	142	145	148	145



-How can we accommodate the increases in enrollment at our two large high schools?

-What plans should be made for possible new construction?



# Conclusions/Recommendations

1. Limiting Optional Zone choice to students entering 6th grade had the desired effect and, with the exception of clarifying the date by which they must be enrolled, should remain unchanged for 2020-2021. Limiting the extent of the Optional Zone remains a future possibility.
2. The need for additional elementary classrooms at Baker and Lakeville is supported by current enrollment trends. These spaces allow the District to maintain current school enrollment zones.
3. Reconfiguration of science labs at North High School and repurposing existing spaces at North and South High School, and North Middle School should allow these schools to accommodate our students through 2024-2025 and beyond.
4. The Board should consider advising constituents that new housing will be placed into attendance zones based on which schools are best able to accommodate increases in their student populations.

# Destination Ahead

Questions?(Thank you!)