

E.M. Baker Elementary School Lakeville Elementary School Spatial Needs October 15, 2019



Great Neck Public Schools
E.M. Baker School & Lakeville School
Spatial Needs

Existing Conditions

E.M. Baker



Great Neck Public Schools

E.M. Baker School & Lakeville School

Spatial Needs

BBS ARCHITECTS
LANDSCAPE ARCHITECTS
ENGINEERS

www.BBSARCHITECTURE.com

E.M. Baker

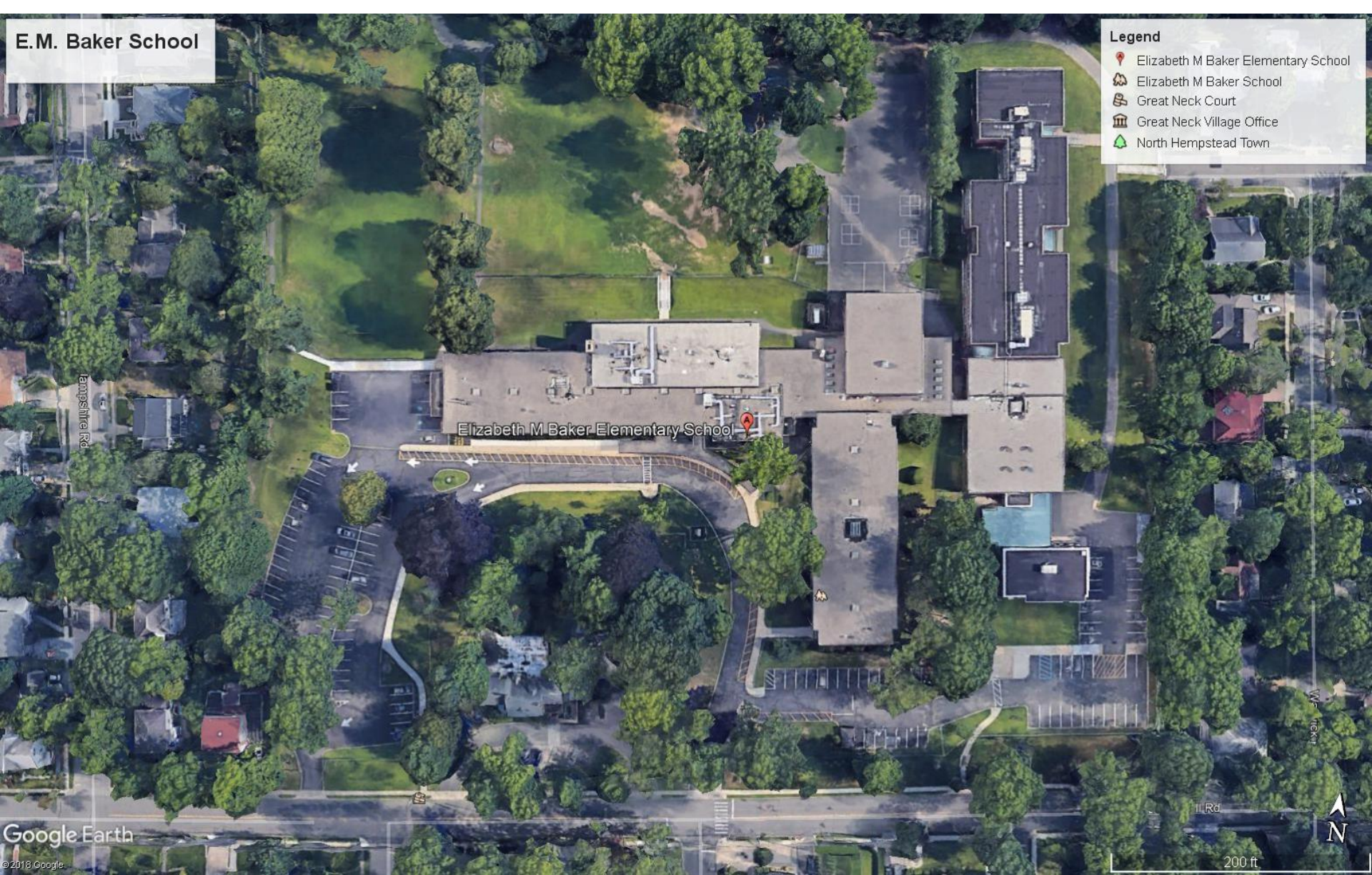
E.M. Baker School – Student Enrollment							
<u>Grade</u>	<u>1989-90</u>	<u>1994-95</u>	<u>1999-00</u>	<u>2004-05</u>	<u>2009-10</u>	<u>2014-15</u>	<u>2019-20</u>
K	109	90	88	68	87	83	106
1	96	101	102	87	86	106	92
2	83	89	98	81	87	107	125
3	92	97	86	79	80	92	99
4	84	92	102	76	100	95	127
5	79	130	105	89	97	102	118
ID	14	5	0	8	0	11	10
Total	557	604	581	488	537	596	677



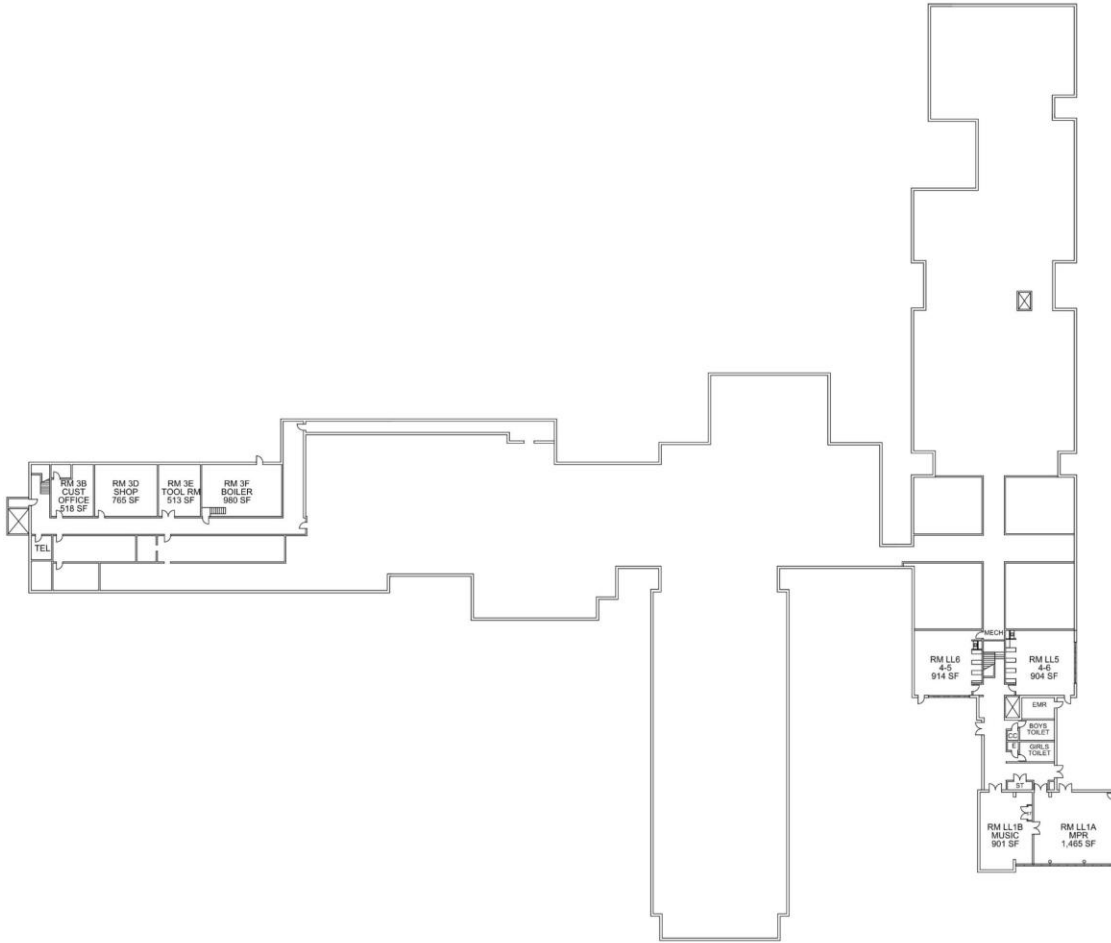
E.M. Baker School

Legend

- Elizabeth M Baker Elementary School
- Elizabeth M Baker School
- Great Neck Court
- Great Neck Village Office
- North Hempstead Town



Great Neck Public Schools
E.M. Baker School & Lakeville School
Spatial Needs



LOWER LEVEL PLAN
SCALE: 1" = 20'

GREAT NECK UNION FREE SCHOOL DISTRICT - E.M. BAKER ELEMENTARY SCHOOL

EXISTING LOWER LEVEL

FLOOR PLAN DIAGRAMS



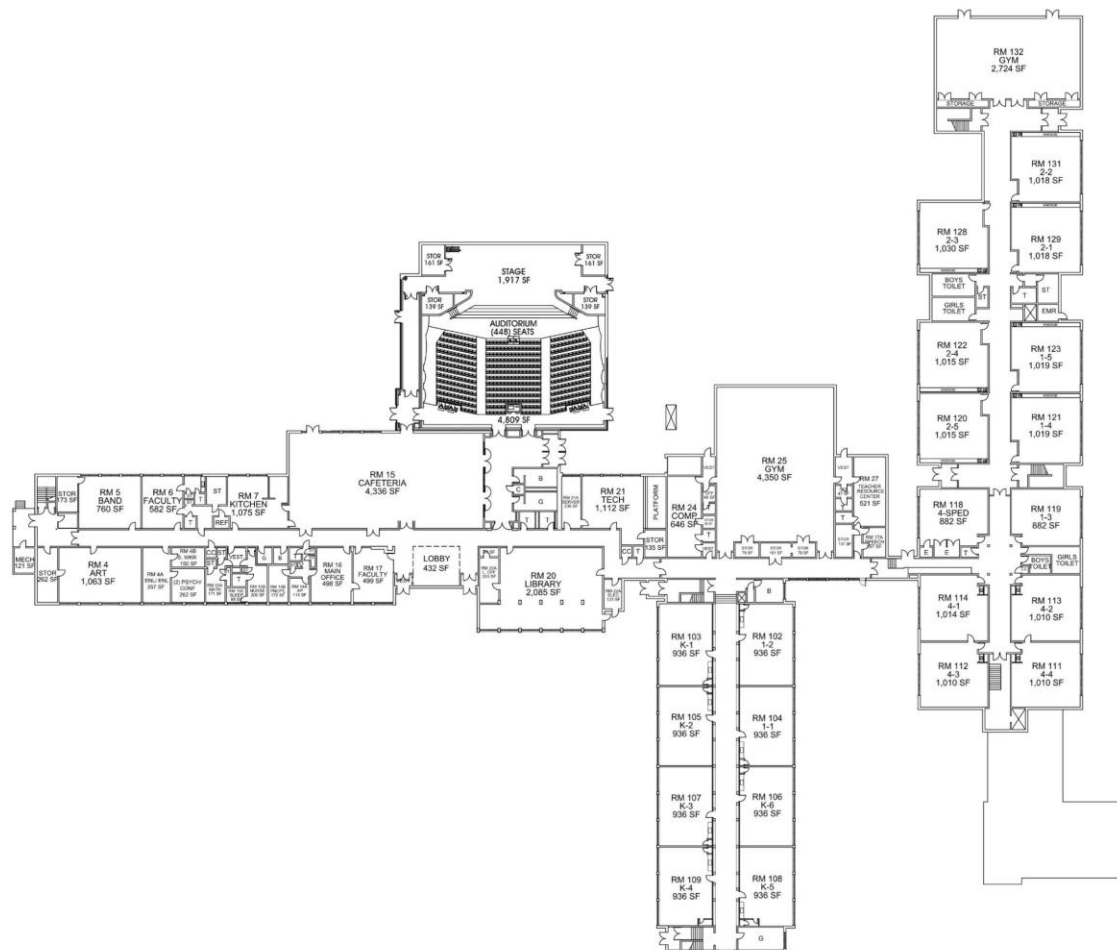
1" = 20'-0"

E-01

08-30-19



Great Neck Public Schools
E.M. Baker School & Lakeville School
Spatial Needs



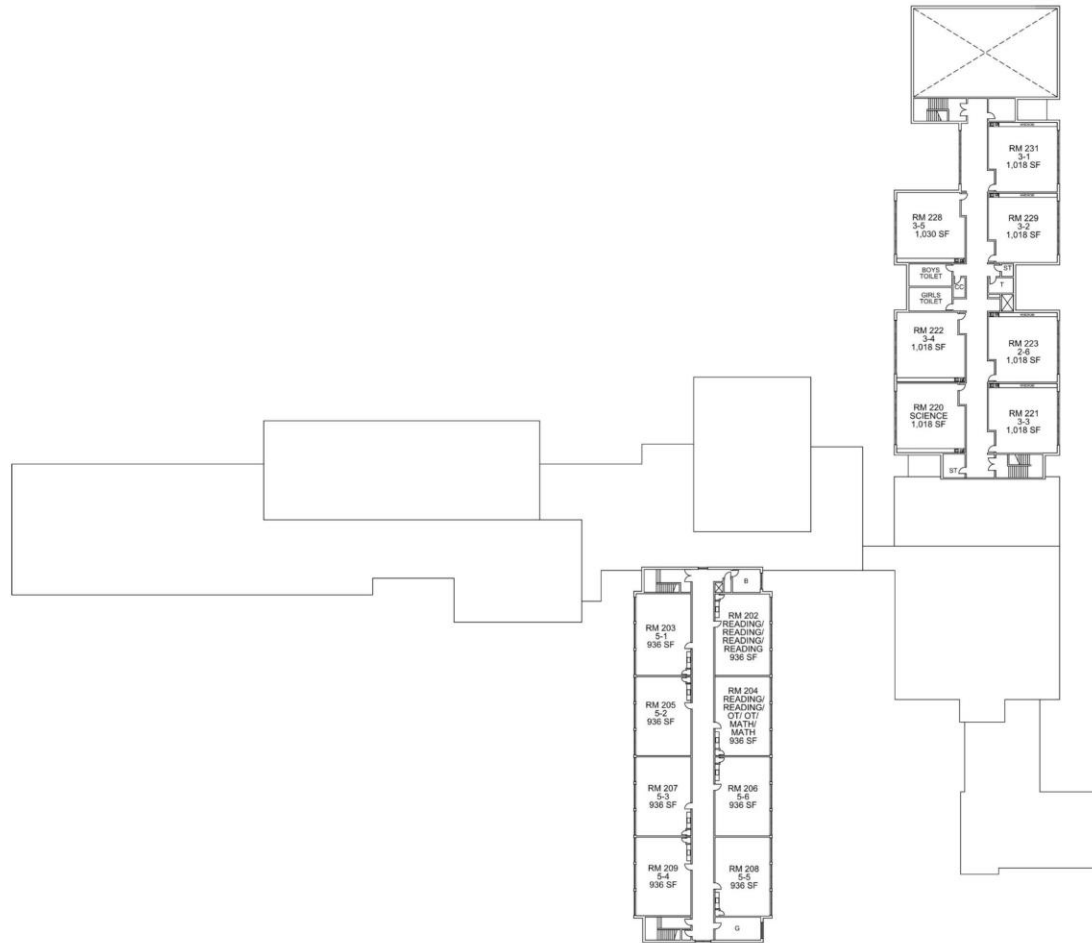
SCALE: 1" = 20'

EXISTING FIRST FLOOR PLAN DIAGRAMS



08-30-19





SECOND FLOOR PLAN
SCALE: 1" = 20'

GREAT NECK UNION FREE SCHOOL DISTRICT - E.M. BAKER ELEMENTARY SCHOOL

EXISTING SECOND FLOOR

FLOOR PLAN DIAGRAMS



1" = 20'-0"

E-03

08-30-19



Great Neck Public Schools
E.M. Baker School & Lakeville School
Spatial Needs

E.M. Baker – Enrollment Projections

	ACTUAL	PROJ.	PROJ.	PROJ.	PROJ.	PROJ.
GRADE	19-20	20-21	21-22	22-23	23-24	24-25
K	106	95	95	95	95	95
1	92	116	104	104	104	104
2	125	99	124	111	111	111
3	99	134	105	132	119	119
4	127	105	142	112	140	126
5	118	134	110	149	117	148
ID	10	11	11	11	11	11
TOTAL	677	694	691	714	697	714

Note: These projections do not include future developments



Great Neck Public Schools
E.M. Baker School & Lakeville School
Spatial Needs

Proposed

E.M. BAKER

Spatial Needs



Great Neck Public Schools
E.M. Baker School & Lakeville School
Spatial Needs



LOWER LEVEL KEY PLAN
SCALE: N.T.S.

STAIR
RECONSTRUCTION

LOWER LEVEL
EGRESS

LOWER LEVEL PART PLAN
SCALE: 1/8" = 3/32"

GREAT NECK UNION FREE SCHOOL DISTRICT - E.M. BAKER ELEMENTARY SCHOOL

PROPOSED LOWER LEVEL

FLOOR PLAN DIAGRAMS



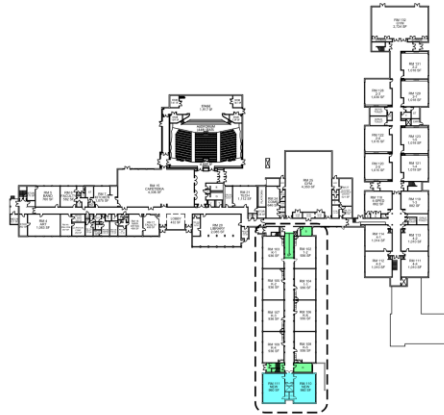
1" = 20'-0"

P-01

08-30-19

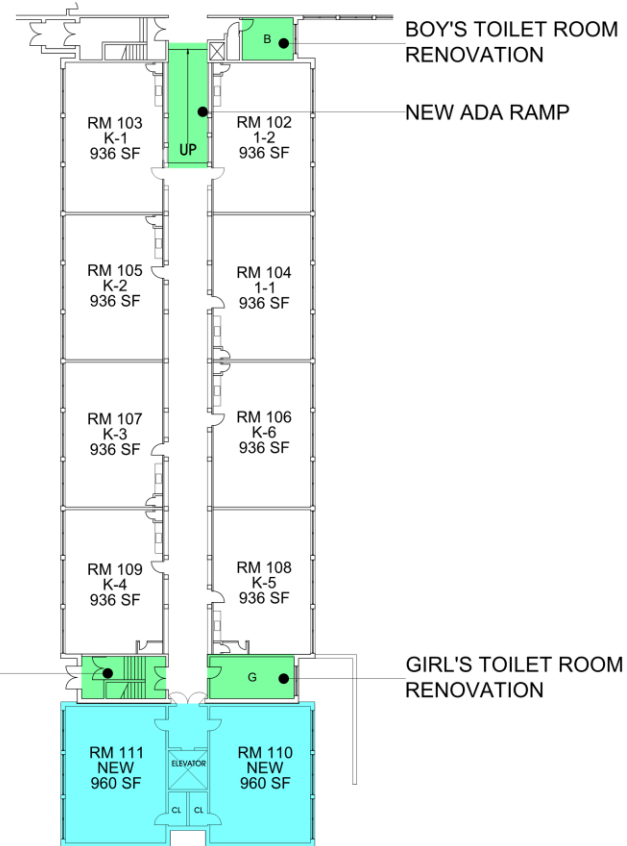


Great Neck Public Schools
E.M. Baker School & Lakeville School
Spatial Needs



FIRST FLOOR KEY PLAN
SCALE: N.T.S.

STAIR
RECONSTRUCTION



FIRST FLOOR PART PLAN
SCALE: 1/4" = 3'-0"



GREAT NECK UNION FREE SCHOOL DISTRICT - E.M. BAKER ELEMENTARY SCHOOL

PROPOSED FIRST FLOOR

FLOOR PLAN DIAGRAMS



1" = 20'-0"

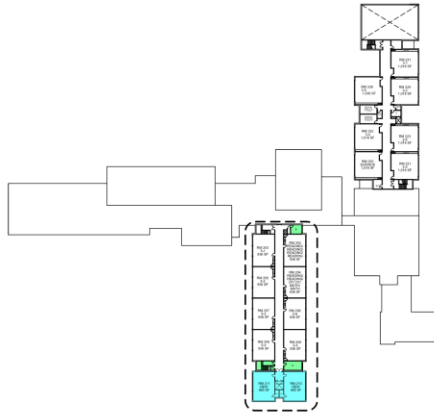
P-02

08-30-19

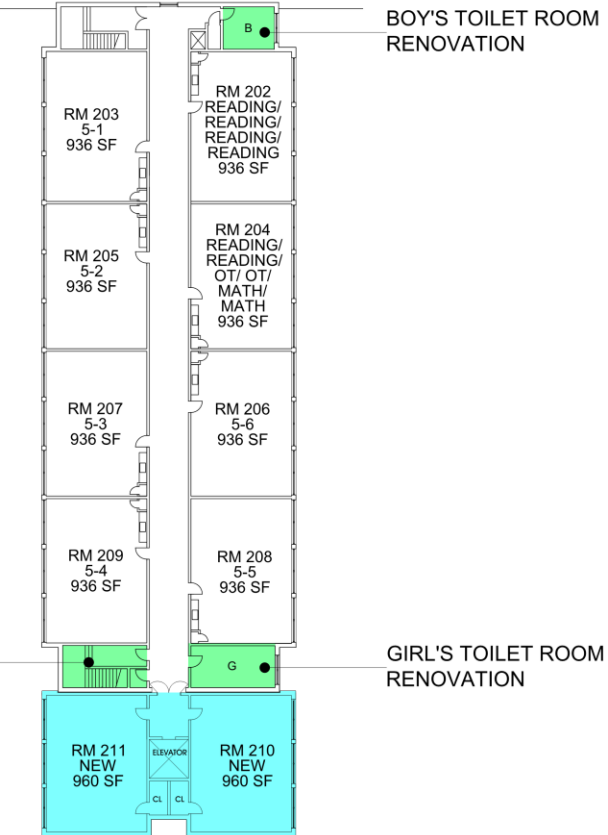


Great Neck Public Schools
E.M. Baker School & Lakeville School
Spatial Needs

SECOND FLOOR KEY PLAN
SCALE: N.T.S.



STAIR
RECONSTRUCTION



SECOND FLOOR PART PLAN
SCALE: 1" = 20'-0"



GREAT NECK UNION FREE SCHOOL DISTRICT - E.M. BAKER ELEMENTARY SCHOOL

PROPOSED SECOND FLOOR

FLOOR PLAN DIAGRAMS



1" = 20'-0"

P-03

08-30-19



Great Neck Public Schools
E.M. Baker School & Lakeville School
Spatial Needs



Great Neck Public Schools
E.M. Baker School & Lakeville School
Spatial Needs



Great Neck Public Schools
 E.M. Baker School & Lakeville School
 Spatial Needs

Proposed Site Plan

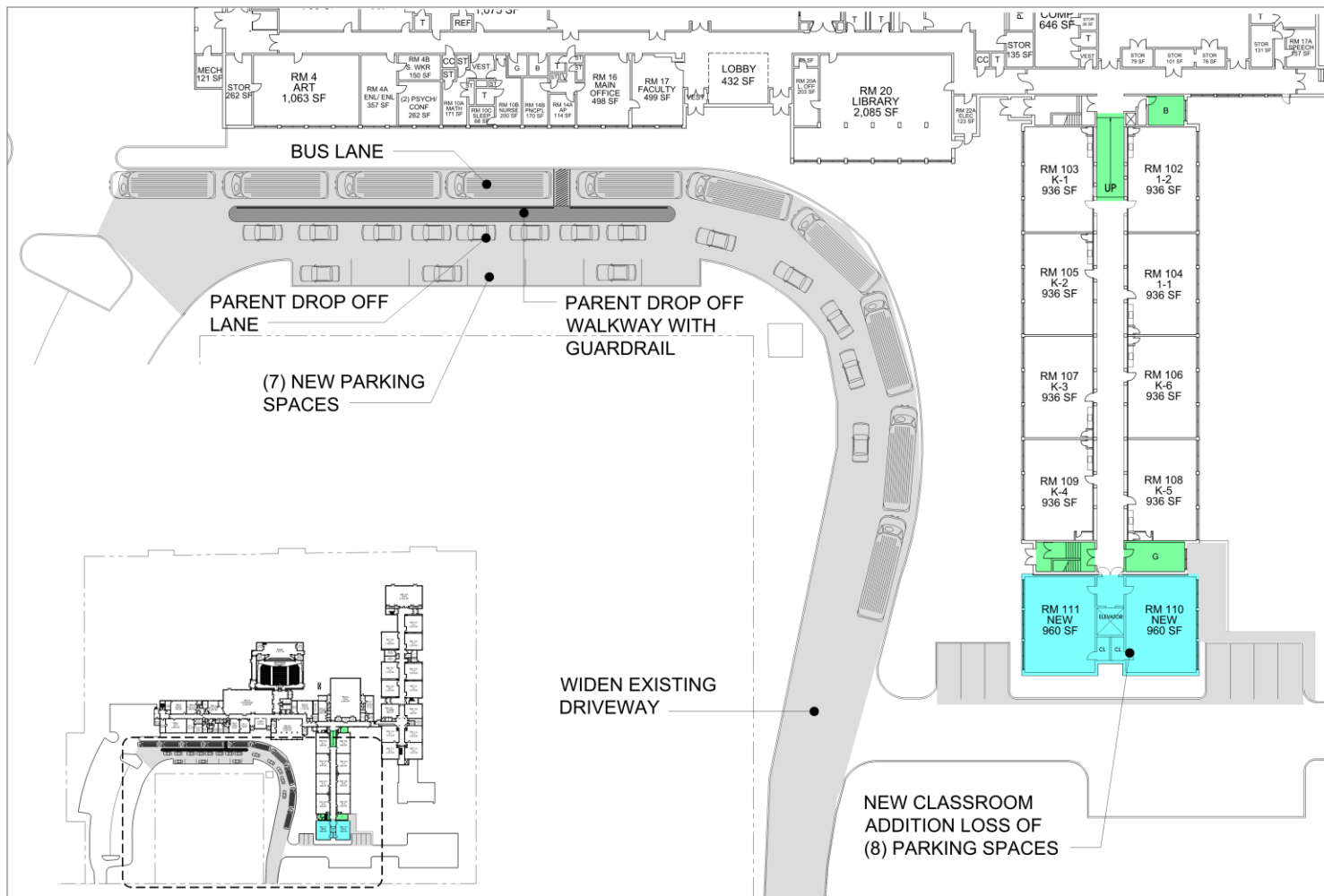
E.M. BAKER



Great Neck Public Schools

E.M. Baker School & Lakeville School

Spatial Needs



GREAT NECK UNION FREE SCHOOL DISTRICT - E.M. BAKER ELEMENTARY SCHOOL

PROPOSED SITE PLAN

PLAN DIAGRAMS



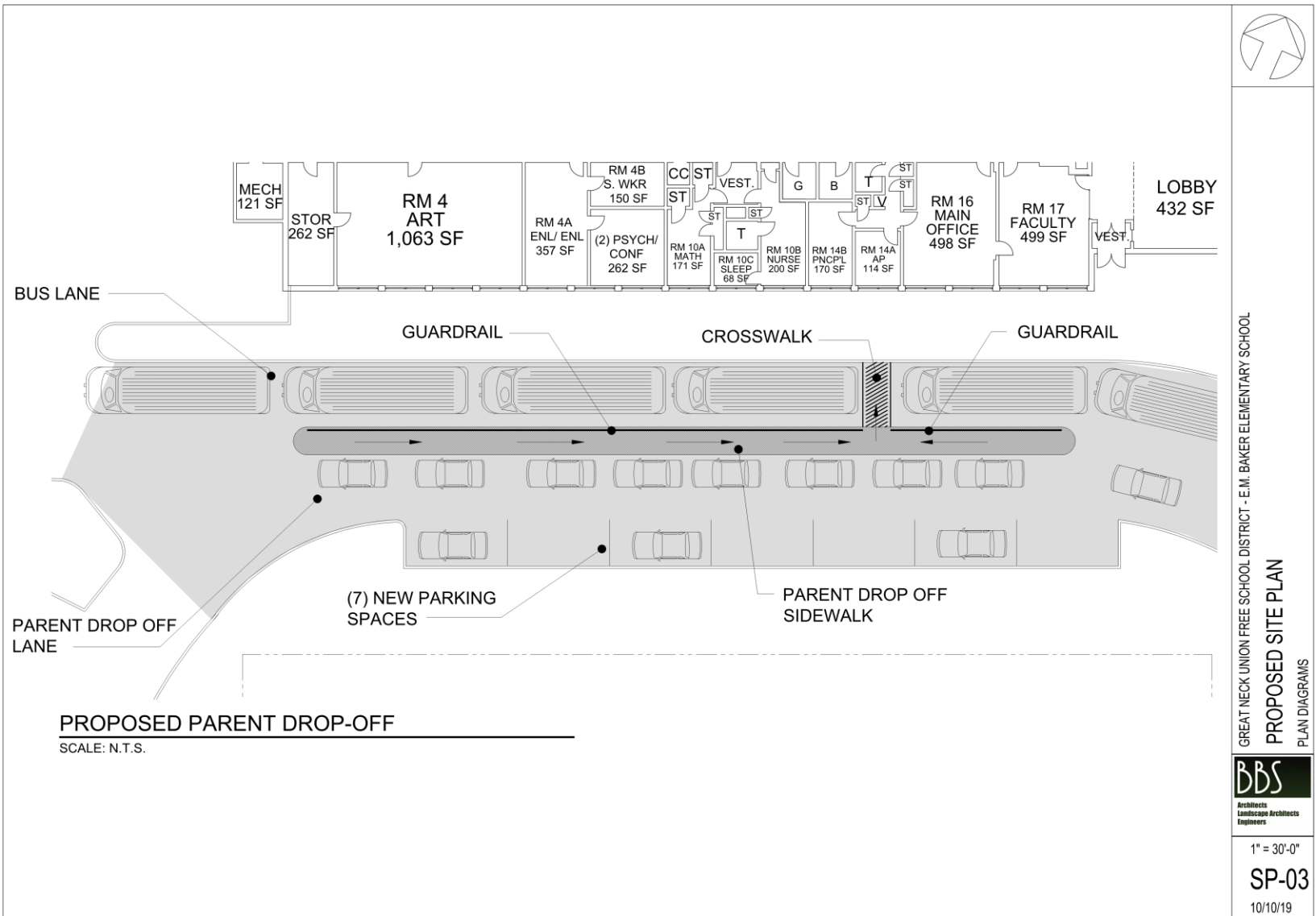
1" = 30'-0"

SP-02

08-30-19



Great Neck Public Schools
E.M. Baker School & Lakeville School
Spatial Needs



Existing Conditions

Lakeville



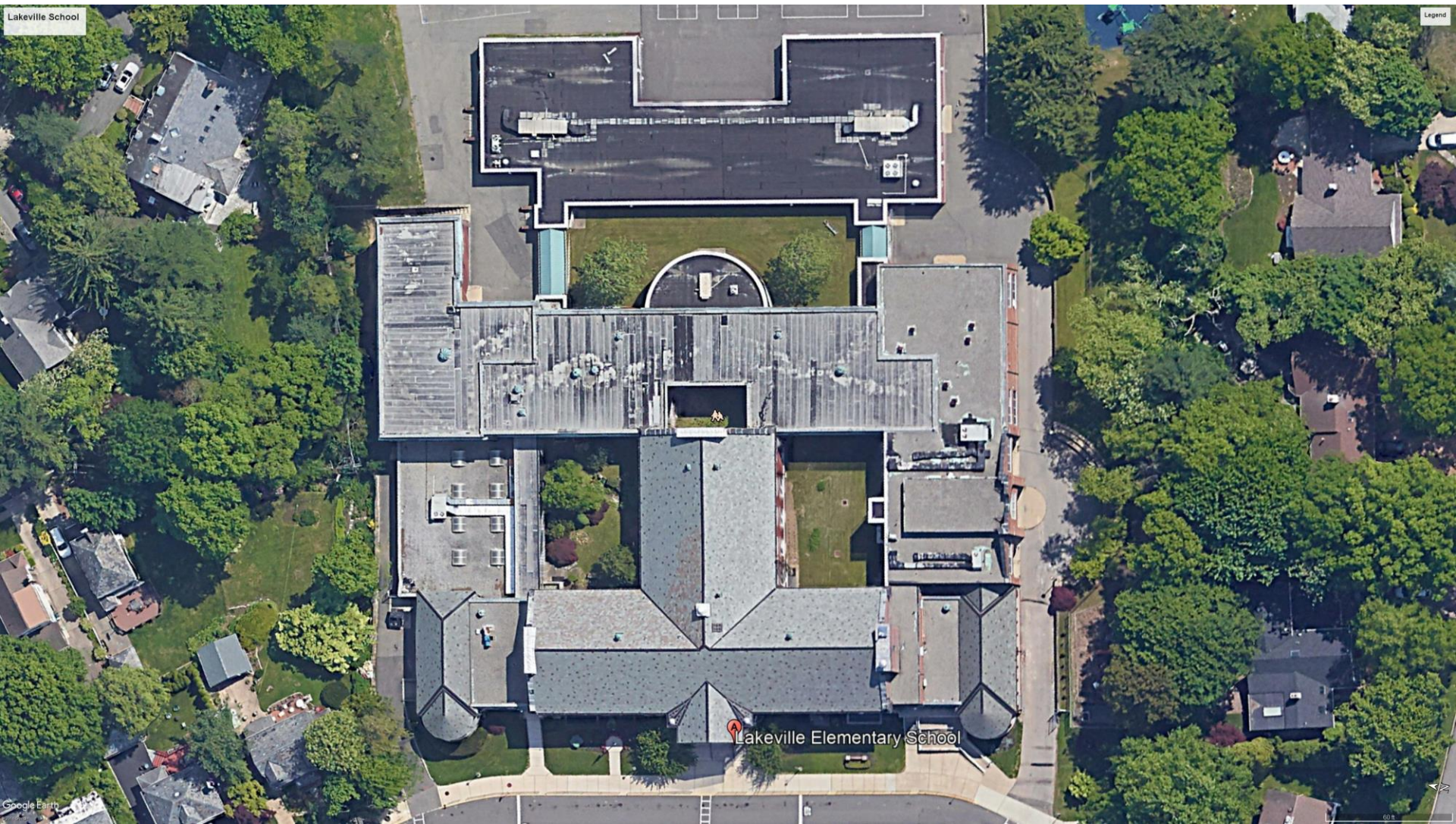
Great Neck Public Schools
E.M. Baker School & Lakeville School
Spatial Needs

Lakeville

LAKEVILLE SCHOOL/LAP Student Enrollment								
Grade	1989-90	1993-94	1994-95	1999-00	2004-05	2009-10	2014-15	2019-20
K	100	133	LAP	LAP	LAP	LAP	LAP	LAP
1	113	137	140	141	131	129	126	123
2	139	104	138	143	129	142	136	125
3	133	138	113	130	147	138	154	142
4	117	122	140	138	155	173	158	167
5	115	139	125	153	169	147	169	181
ID	18	17	23	40	21	0	0	7
Total	735	790	679	745	752	729	744	745

LAP: Beginning with the 1994-95 school year, Lakeville's Kindergarten classes have been held at Parkville School.





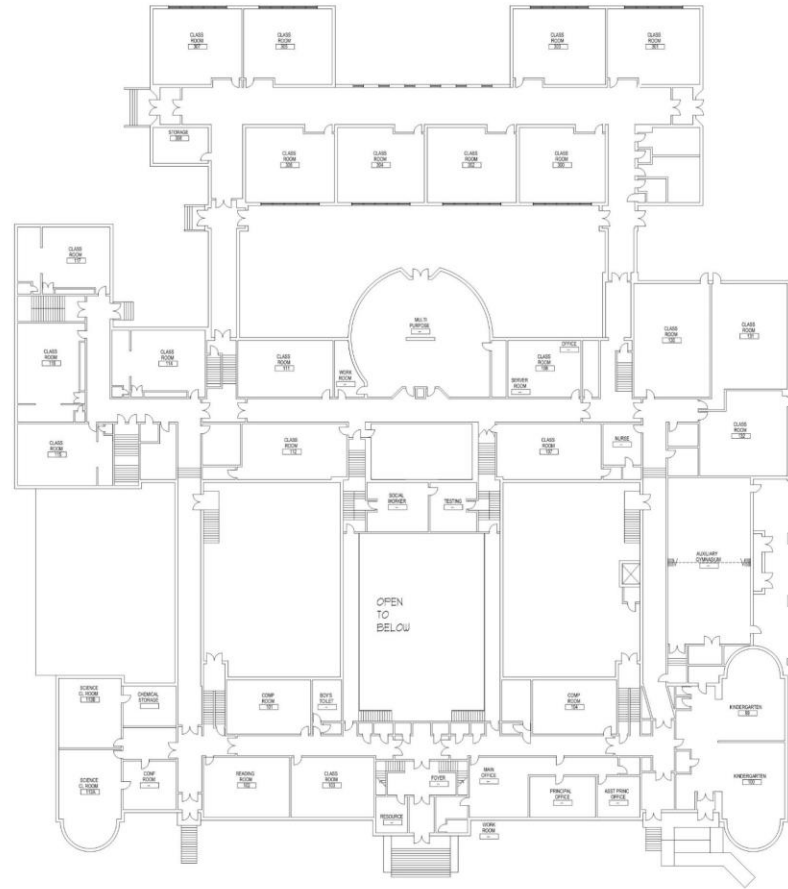
Great Neck Public Schools
E.M. Baker School & Lakeville School
Spatial Needs

Spaces not originally intended for instruction have been adapted for small group instruction to accommodate the current enrollment.

- ✓ **Math Lab classes meet in the library**
- ✓ **ENL classes meet in a former storage closet**
- ✓ **The occupational therapist works with students in a space in the Book Room**

Two additional classrooms will allow Lakeville School to co-locate these support services into two of the smaller classrooms once the larger classrooms are added.





FIRST FLOOR PLAN
SCALE: 1/16" = 1'-0"

GREAT NECK UNION FREE SCHOOL DISTRICT - E.M. BAKER ELEMENTARY SCHOOL
EXISTING FIRST FLOOR PLAN
FLOOR PLAN DIAGRAMS



1" = 20'-0"

E-01

09-16-19

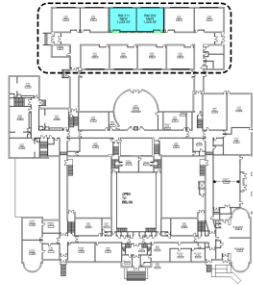


Great Neck Public Schools
E.M. Baker School & Lakeville School
Spatial Needs

Proposed Lakeville Spatial Needs



Great Neck Public Schools
E.M. Baker School & Lakeville School
Spatial Needs



FIRST FLOOR KEY PLAN
SCALE: N.T.S.



FIRST FLOOR PART PLAN
SCALE: N.T.S.



GREAT NECK UNION FREE SCHOOL DISTRICT - E.M. BAKER ELEMENTARY SCHOOL

PROPOSED FIRST FLOOR PLAN

FLOOR PLAN DIAGRAMS



1" = 20'-0"

P-01

09-16-19



Great Neck Public Schools
E.M. Baker School & Lakeville School
Spatial Needs



Great Neck Public Schools
E.M. Baker School & Lakeville School
Spatial Needs



Great Neck Public Schools
E.M. Baker School & Lakeville School
Spatial Needs

Preliminary Timeline

Vote – December 3, 2019



Great Neck Public Schools
E.M. Baker School & Lakeville School
Spatial Needs

VOTE	2019	2020							2021							2022							
BBS - DESIGN AND CONSTRUCTION DOCUMENTS (8) MONTHS	DEC 3RD	DEC	JAN	FEB	MAR	APR	MAY	JUN	JUL	AUG	SEP	OCT	NOV	DEC	JAN	FEB	MAR	APR	MAY	JUN	JUL	AUG	SEP
NYSED (4) MONTHS																							
BID / AWARD (2) MONTHS																							
PRECONSTRUCTION (3) MONTHS																							
CONSTRUCTION (16) MONTHS																							
OCCUPANCY																							



Preliminary Costs



Great Neck Public Schools

E.M. Baker School & Lakeville School

Spatial Needs

	NEW CONSTRUCTION							project cost			
1	Addition(6) classrooms	7,600	GSF	@	\$	450	per sf =	\$	3,420,000	\$	4,836,545
2	NEW CONSTRUCTION		7,600	GSF	Subtotal			\$	3,420,000	\$	4,836,545
3	INTERIOR RECONSTRUCTION							project cost			
4	Room 103	1,047	SF	@	\$	100	per sf =	\$	104,700	\$	148,066
5	Room 102	1,045	SF	@	\$	100	per sf =	\$	104,500	\$	147,783
6	Reconstruct stair and lower level egress	1,140	SF	@	\$	200	per sf =	\$	228,000	\$	322,436
7	Existing Toilet Rooms at Center Wing	840	SF	@	\$	375	per sf =	\$	315,000	\$	445,471
8	INTERIOR RECONSTRUCTION		4,072	SF	Subtotal			\$	752,200	\$	1,063,757
9	EQUIPMENT, FURNITURE & TECHNOLOGY							project cost			
10	New Classroom Furniture, Technology & Casework (FT&C) Allowance	6	CR	@	\$	50,000	per CR =	\$	300,000	\$	424,258
11	New Elevator (Equipment Only)	1		@	\$	450,000	=	\$	450,000	\$	636,387
12	Technology Allowance	1		@	\$	70,000	=	\$	70,000	\$	98,994
13	EQUIPMENT, FURNITURE & TECHNOLOGY		Subtotal			\$	820,000	\$	1,159,639		
14	SITE, ENGINEERING & ENVIRONMENTAL							project cost			
15	Site Work Allowance for Building Addition	1		@	\$	125,000	=	\$	125,000	\$	176,774
16	Engineering Systems Allowance	1		@	\$	100,000	=	\$	100,000	\$	141,419
17	Environmental Contingency	1,200	SF	@	\$	20	per sf =	\$	24,000	\$	33,941
18	SITE, ENGINEERING & ENVIRONMENTAL		Subtotal			\$	249,000	\$	352,134		
19							Subtotal	\$	5,241,200		
20							Contractor General Conditions	7%	\$		
21							Subtotal	\$	5,608,084		
22	Design Contingency						5%	\$	280,404		
23	Construction Contingency						5%	\$	294,424		
24	Escalation						8%	\$	494,633		
25	Construction Cost						Subtotal	\$	6,677,546		
26	A/E Professional Fees						5%	\$	333,877		
27	Owner Soft Costs (CM, Legal, Survey, Testing, SEQRA, etc.)						8%	\$	400,653		
28	Project Cost						Total	\$	7,412,076	\$	7,412,076

E. M. Baker – Classrooms

\$ 7,412,076



Great Neck Public Schools
E.M. Baker School & Lakeville School
Spatial Needs

SITE							project cost	
New Paving	8,000	SF	@	\$	9	=	\$ 72,000	\$ 101,822
Paving Replacement	8,600	SF		\$	10		\$ 86,000	\$ 121,621
New Concrete curbs	1,250	LF		\$	40		\$ 49,980	\$ 70,681
New concrete sidewalk	1,025	SF		\$	22		\$ 22,550	\$ 31,890
Guard rail	160	LF		\$	68		\$ 10,880	\$ 15,386
Drainage	1	LS		\$	18,000		\$ 18,000	\$ 25,455
Demolition & grading	1	LS		\$	32,000		\$ 32,000	\$ 45,254
Tree removal	1	LS	@	\$	8,400	=	\$ 8,400	\$ 11,879
New Flagpole	1	LS		\$	11,000		\$ 11,000	\$ 15,556
Site Restoration	1	LS	@	\$	18,000	per sf =	\$ 18,000	\$ 25,455
SITE Subtotal							\$ 328,810	
Contractor General Conditions							Subtotal \$ 328,810	
							7% \$ 23,017	
							Subtotal \$ 351,827	
Design Contingency							5% \$ 17,591	
Construction Contingency							5% \$ 18,471	
Escalation							8% \$ 31,030	
Construction Cost							Subtotal \$ 418,919	
A/E Professional Fees							5% \$ 20,946	
Owner Soft Costs (CM, Legal, Survey, Testing, SEQRA, etc.)							8% \$ 25,135	
Project Cost							Total \$ 465,000	\$ 465,000.9

E. M. Baker – Bus Loop/Parent Drop-off

\$ 465,000



Great Neck Public Schools
E.M. Baker School & Lakeville School
Spatial Needs

	NEW CONSTRUCTION						<i>project cost</i>
1	Addition(2) classrooms	2,200	GSF	@	\$ 450	per sf = \$ 990,000	\$ 1,400,052
2	NEW CONSTRUCTION Subtotal						\$ 990,000 \$ 1,400,052
3	INTERIOR RECONSTRUCTION						<i>project cost</i>
4	Corridor	450	SF	@	\$ 100	per sf = \$ 45,000	\$ 63,639
5	INTERIOR RECONSTRUCTION Subtotal						\$ 45,000 \$ 63,639
6	EQUIPMENT, FURNITURE & TECHNOLOGY						<i>project cost</i>
7	New Classroom Furniture, Technology & Casework (FT&C) Allowance	2	CR	@	\$ 50,000	per CR = \$ 100,000	\$ 141,419
8	Technology Allowance	2		@	\$ 15,000	= \$ 30,000	\$ 42,426
9	EQUIPMENT, FURNITURE & TECHNOLOGY Subtotal						\$ 130,000 \$ 183,845
10	SITE, ENGINEERING & ENVIRONMENTAL						<i>project cost</i>
11	Site Work Allowance for Building Addition	1		@	\$ 100,000	= \$ 100,000	\$ 141,419
12	Engineering Systems Allowance	1		@	\$ 50,000	= \$ 50,000	\$ 70,710
13	Environmental Contingency	450	SF	@	\$ 20	per sf = \$ 9,000	\$ 12,728
14	SITE, ENGINEERING & ENVIRONMENTAL Subtotal						\$ 159,000 \$ 224,857
15							
16	Contractor General Conditions						
17							
18	Design Contingency						
19	Construction Contingency						
20	Escalation						
21	Construction Cost Subtotal						\$ 1,686,841
22	A/E Professional Fees						5% \$ 84,342
23	Owner Soft Costs (CM, Legal, Survey, Testing, SEQRA, etc.)						8% \$ 101,210
24	Project Cost Total						\$ 1,872,393 \$ 1,872,393

Lakeville– Classrooms

\$ 1,872,393



Great Neck Public Schools
E.M. Baker School & Lakeville School
Spatial Needs

2019 Capital Proposition

E. M. Baker (6) Classroom addition and interior alteration	\$7,412,076
E.M. Baker Bus loop / parent drop-off	\$ 465,000
Lakeville (2) Classroom addition and interior alteration	\$1,872,393
<hr/>	
Proposition Total	\$9,749,469



Great Neck Public Schools

E.M. Baker School & Lakeville School

Spatial Needs

2019 Capital Proposition

The funding for the 2019 Capital Proposition will come from a transfer from the District's Retirement Contribution Reserve and Workers' Compensation Reserve, followed by a transfer to the District's Unreserved Unappropriated Fund Balance Illustrated as follows:

Sources:	
Fund Balances	
Restricted:	
Worker's Compensation	(\$7,749,469)
Retirement Contribution	(\$2,000,000)
Unassigned	\$9,749,469
Uses:	
Fund Balances	
Unassigned	(\$9,749,469)



2019 Capital Proposition

This capital proposition will not increase a resident's school tax liability.



Capital Proposition Vote

Tuesday, December 3, 2019

7 a.m. until 10 p.m.

Polling Sites

E.M. Baker School

Lakeville School

Saddle Rock School

South High School



Great Neck Public Schools

E.M. Baker School & Lakeville School

Spatial Needs