

AI GUIDANCE FOR NIS STUDENTS



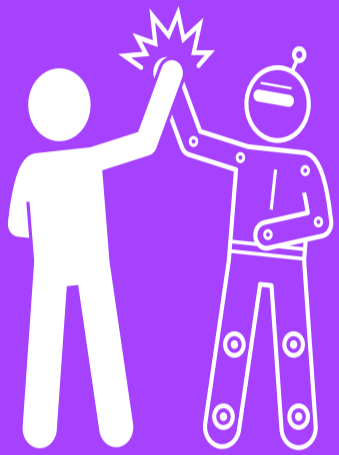
Work with your teachers to determine the extent to which AI can be used. This is largely based on what is being assessed. Our goal is to give feedback that improves *your* understanding and academic growth. Your teachers grading and giving you feedback on AI-generated work does not help you learn.



AI Do's



AI Don'ts



Study Partner

Generate practice problems and get instant feedback on your answers. AI is an attentive, personalized study partner!

On-Demand Tutor

Have a conversation about any topic... in any language at any reading level. Practice prompting by seeking clarification, Use it to come up with creative ways to remember things.

Feedback and Tips

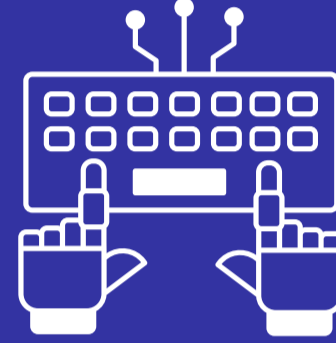
Get initial feedback on your work. Upload the criteria and ask for tips to improve! Critically evaluate which suggestions to incorporate.

Capture the Magic!

Use the range of tools in *Magic School Student* to improve skills, ideas, and understanding. Remember to ask your teacher about how it can be used!

Learn to Cite It

If you use AI to produce something and use it in submitted work, you must credit the software since you did not originally create the content. See the updated NIS APA Guide for details.



Don't submit AI work as your own

Using AI to complete essays, reports, assignments, or any other coursework and submitting it as if it were your own work is a form of plagiarism. It also does not help you learn!

Don't assume AI is always right

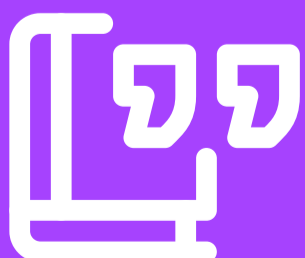
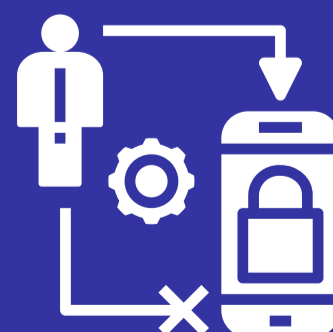
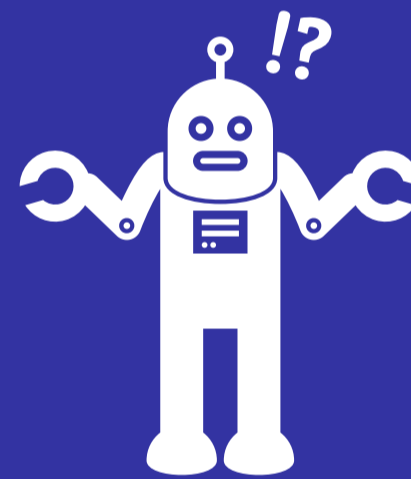
AI is not a reliable source. It does not always produce accurate information. AI can lie, make mistakes, and hallucinate, just like humans.

Don't let it do all the research for you

Generative AI is not a reliable research tool. It is not great at giving you accurate (or even real) sources. It's also not very good at APA references or citations. While it might help with initial research points, questions, and ideas, do not trust for final submissions.

Don't input personal data

Giving personal details to AI tools is risky because there's a chance that this info might get stolen or used in ways you didn't agree to. If you are using AI to process data, always anonymize.



Check out <https://www.nischina.org/how-we-learn/edtech/ai> for more!