



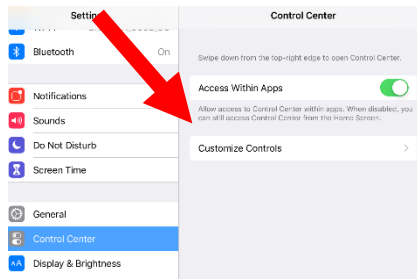
How to Customize the Control Center

Control Center is a quick and easy access tool that allows users to gain immediate access to applications that they use most often. Users can customize the applications within the Control Center. Both teachers and students will want to customize the control panel with apps that they use regularly.

1. Click on **Settings**.



2. On the left-hand side, select **Control Center**.



3. Click **Customize Controls**.


4. To add controls, tap



5. To remove controls, tap



then tap Remove.

6. To rearrange controls in the Control Center, tap Customize Controls, then press and hold  next to the controls and drag them in the order that you want them to appear.

