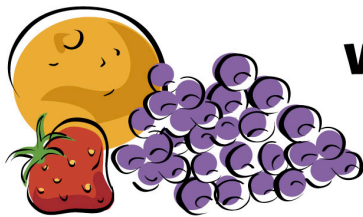


# START

## your day the right way with School Breakfast!



**School Breakfast**  
will give you **MORE** energy,  
keep your body healthy  
and help improve your grades!

School breakfast is available to all students!  
Breakfast locations are in each building's cafeteria

Breakfast times are:

Conneaut Elementary: 8:30 AM - 8:50 AM

Crim Elementary: 8:40 AM - 9 AM

Kenwood Elementary: 8:40 AM - 9 AM

Middle School: 7:20 AM - 7:45 AM

High School: 7:20 AM - 7:45 AM

Menu and pricing are available on our District's website!

