

ED Report

May 2, 2024



Massachusetts Student Opportunity Act

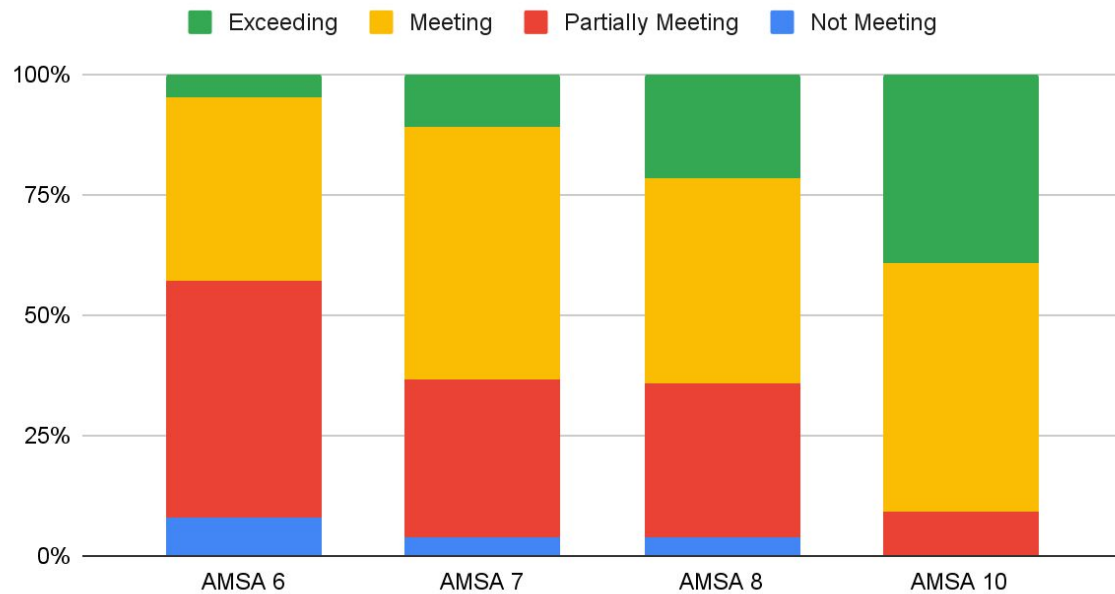
- An Act that focuses on disparities in achievement. It promises to add funds to Chapter 70 over a six year time period.
- This is year three of six
- AMSA does not receive SOA funds directly but receives a portion that is built into the tuition per pupil that AMSA receives from each sending district.

Student Opportunity Plan

A three year plan targeting students who have shown to have the largest achievement gaps.

AMSA will target students with disabilities and students classified as belonging to the low income sub-group.

Math



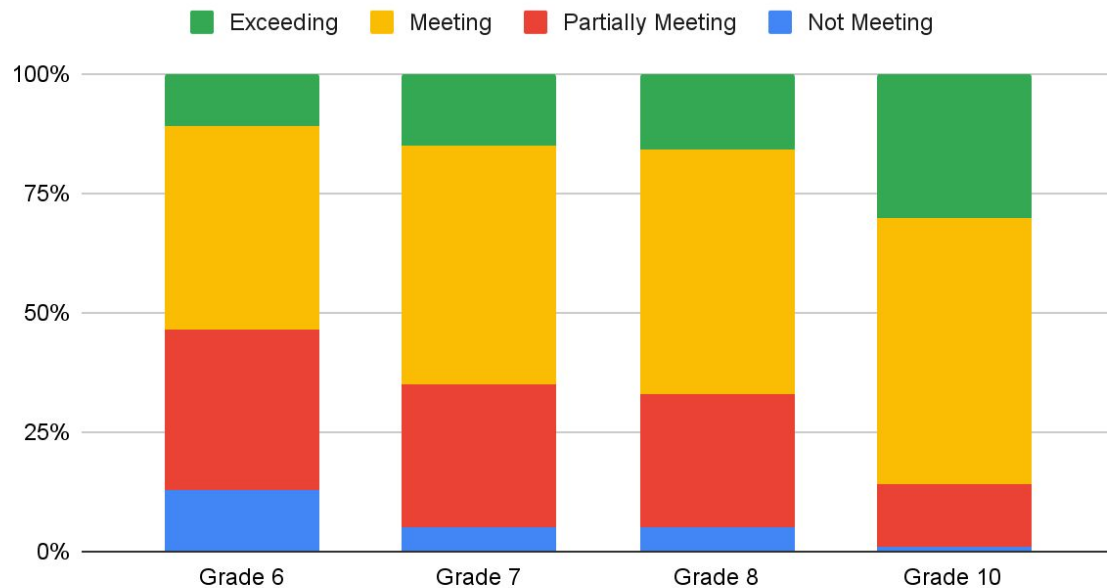
Grade	AMSA	State
Grade 6	43%	41%
Grade 7	63%	38%
Grade 8	65%	38%
Grade 10	91%	50%

Percent of Students Meeting & Exceeding Expectations

Grade	AMSA	AMSA SWD	AMSA LI	Overall State
Grade 6	43%	21%	29%	41%
Grade 7	63%	Not enough participation to report	35%	38%
Grade 8	65%	Not enough participation to report	33%	38%
Grade 10	91%	Not enough participation to report	73%	50%

MATH-Percent of Students Meeting & Exceeding Expectations

English



Grade	AMSA	State
Grade 6	53%	42%
Grade 7	65%	40%
Grade 8	67%	44%
Grade 10	86%	58%

Percent of Students Meeting
& Exceeding Expectations

Grade	AMSA	AMSA SWD	AMSA LI	Overall State
Grade 6	53%	27%	37%	42%
Grade 7	65%	Not enough participation to report	30%	40%
Grade 8	67%	Not enough participation to report	50 %	44%
Grade 10	86%	Not enough participation to report	71%	58%

ENGLISH–Percent of Students Meeting & Exceeding Expectations

AMSA's Plan

- **Comprehensive Tiered Support System**- Establish a comprehensive set of tiered supports for all learners across all academic domains, social, emotional, and behavioral.
- **Targeted Support**- Develop an intervention program that targets the lowest performing groups and provides direct math, science and English Intervention combined with SEL supports.
- **High Leverage Practices for Students with Disabilities**-Train staff in high-leverage instructional practices designed for students with disabilities.

AMSA's Plan for Targeted Support


- Summer Acceleration Academy
- Math Intervention Program
- Peer Academic Coaching
- MCAS Prep

Engagement for Success

- **Family Engagement Opportunities:** through a celebration of diversity and celebration of academic excellence, we provide formal and informal opportunities for engagement.
- **Community Mapping:** Counseling staff partnered with outreach to create a community map to identify community resources available to our families.
- **Community Advocacy Program:** Outreach partnered with the Massachusetts Public Charter School Association to create and implement an advocacy program to increase parent engagement in advocacy.
- **Parent Network Program:** A network of parents who act as liaisons, sharing information and encouraging engagement.
- **Measuring Family Engagement:**
- **Annual Family Engagement Survey:** The education committee, which consists of administrators, parents, staff, and board members, designed a school-wide family engagement survey.

Next Steps

- Board Vote to Approve Plan
- Work with AMSA Staff to Carry Out the Plan
- Ongoing monitoring of progress towards meeting achievement targets

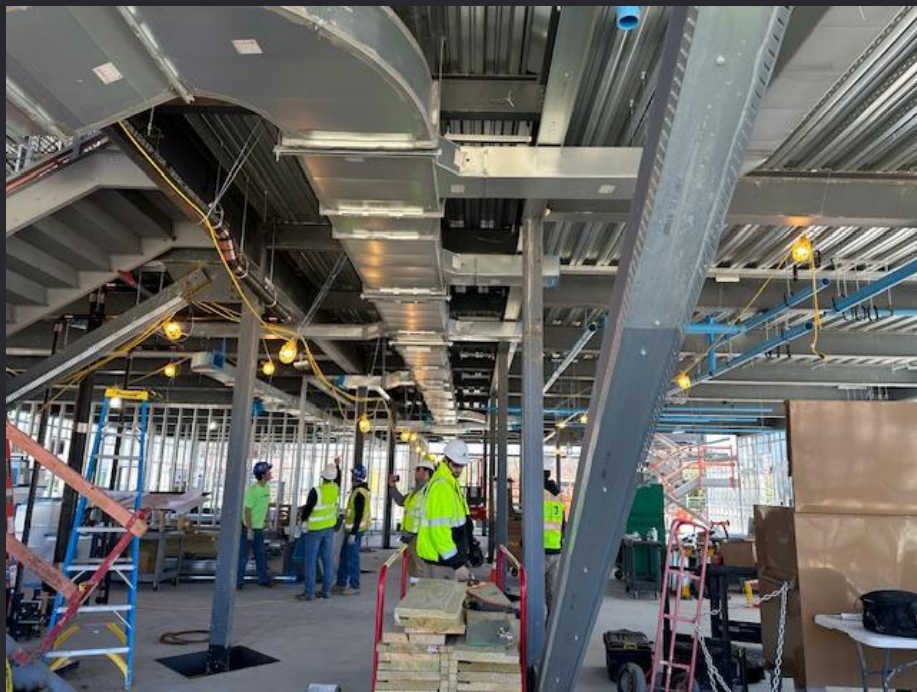


Building Update 5/2/2024

**The Winter
Wrap Has
Been
Removed**



First Floor



You Can Start to See Classrooms



Second Floor



Second Floor Continued

