

2023-24

Jewel M Sumner High School

Annual Meeting -SWP



10/04/2023

5:00 PM

Agenda

WELCOME COWBOY PARENTS!!!

| | |
|---|--|
| <p>Topic: SHS School Goals and School Wide Plan 2023-24</p> <p>Attendees: All SHS Stakeholders</p> <p>Objective: SHS Goals & Action Steps 2023-24</p> <p>Location: SHS Gymnasium</p> <p>Facilitators: Ms Matthews/Mr Wilson</p> | |
| <p>5:00 PM</p> <p>Reminders:</p> <ul style="list-style-type: none">➤ Friday is a Fair Day Holiday | <p>Welcome:</p> <ul style="list-style-type: none">➤ Introductions to School Administration and Faculty in attendance➤ Review 2022-23 School Data➤ SHS is a Title I schools and receives Title I School Funds➤ Analyze priorities➤ Discuss Success Criteria for priority areas➤ Develop School Goals➤ Parental and Family Involvement• Discuss Spring Assessment |
| | |

School/Curriculum Goals

JSHS will improve Assessment Index by at least 10 pts.

**SHS is a Title I School
& receives Federal Funds**



Jewel Sumner High School

MISSION STATEMENT

The mission of the Jewel Sumner High School is committed to meeting the educational needs of all students in a safe, learning environment.

- Rigorous Tier 1 Curriculum Implementation
- Parental Involvement
- ACT/WorkKeys Prep
- Interventions/ Remediation (as needed)
- Positive Social and Emotional Learning
- Progress Monitoring/Student Goal Tracking

School Wide Plan-Needs Assessment

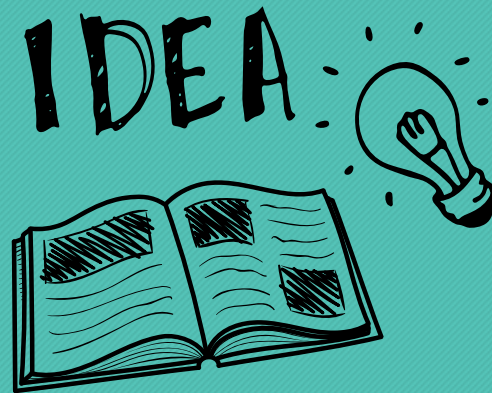
| STRENGTHS | WEAKNESSES |
|---|--|
| LEAP 2025-9% Increase in Geometry LEAP 2025 Mastery + Some Students Demonstrated Top Growth in Mastery | 31% of our students scored Mastery or Advanced on LEAP 2025 English I <1% of students scored Mastery or Advanced on LEAP 2025 in Geometry |
| School Performance Score has remained consistent from 2017-18 to 2018-19 with a score of 79 | 5% of students scored Mastery or Advanced on LEAP 2025 in science |
| Student Progress is consistent within the last three years as 68. | Assessment Index is 49.7 overall for school |
| 82% of our students feel supported through their relationships with friends, family, and adults at school. When ranked nationally compared to other districts, we fall in the 79th percentile at 82%. | 19% of our students say they are attentive and invested in the classroom. When ranked nationally compared to other districts, we fall in the 10th percentile at 19%. |
| 55% of our students are graduating with credentials and exceeds the state average. | Science and social studies were a Level 0-1 on the LADOE Curriculum Implementation Scale |
| School Performance Score has remained consistent from 2017-18 to 2018-19 with a score of 79 | <7% of students scored Mastery or Advanced on LEAP 2025 in Algebra I |

School Wide Plan- GOALS

1. By May 2024, Jewel M Sumner High School will increase SPS from 77.1 to 84.0 as evidenced by the LEAP 2025 Assessment scores, Graduation Rate, Strength of Diploma, and ACT/WorkKeys scores through the implementation of Tier 1 curriculum and TPSS approved curriculum in all subject areas at all grade levels (9-12) to support student mastery as well as college and career readiness.
2. By May 2024, increase the school's overall Math Assessment from 7% on the Spring 2024 LEAP 2025 to a 30% on the Spring 2024 LEAP Assessment.
3. By May 2024, increase the school's overall ELA Assessment from 42% on the Spring 2024 LEAP 2025 to a 50% on the Spring 2024 LEAP Assessment.
4. By May 2024, increase the school's overall Biology Assessment from 2% on the Spring 2024 LEAP 2025 to a 47% on the Spring 2024 LEAP Assessment.
5. By May 2024, increase the school's overall US History Assessment from 23% on the Spring 2024 LEAP 2025 to a 33% on the Spring 2024 LEAP Assessment.
6. By May 2024, students with disabilities subgroup will increase proficiency from 12% to 20% in ELA and Math based on the Spring 202 LEAP 2025 Assessment.
7. By May 2024, increase the school's ACT/WorkKeys average from 17.2 to 18 by Spring 2024.
8. By May 2024, increase overall attendance for all JSHS students to at least 85% attendance rate.
9. By May 2024, reduce the percentage of disciplinary referrals within the classroom to less than 5%.

Important Information/ Events

- End of 1st 9 Weeks (October 14th)
- Thanksgiving Break (Nov 21st -25th)
- ACT March 7th-9th
- ASVAB TBD
- Spring Assessment LEAP 2025 (April 18th)
- Graduation (MAY 16th)

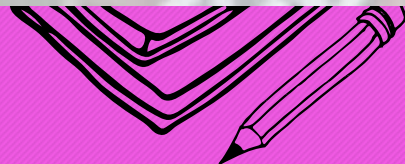


School policies

CLASSROOM TARDY PROCEDURES

- Be on time for all classes.
- When the tardy bell rings, be seated and ready to work.
- When a student is tardy to a class, the teacher documents the tardy on the Tardy Log.
- Tardies are accumulated per class (each teacher handles their own tardies for their own classes).
- Tardy policy is per semester.
- Tardy Assertive Discipline Plan:
 1. First Offense- Warning
 2. Second Offense- Conference w/ Teacher
 3. Third Offense- Minor Referral/Parent Conference
 4. Fourth Offense- Major Referral
 5. Fifth and Subsequent Offense: Major Referral

- Restorative Practices
- School cancellations for bad weather and other reasons.
- Emergency procedures
- Transportation
- After-school activities
- Volunteering



Get involved!

-

Zachary.kellem@tangischools.org

<https://jshs.tangischools.org/>

Questions?

