



# **Pattonville Prop S – Phase 1 Construction Update**

November 2023

# Monthly Construction Update

## Upcoming Highlights November 2023

- Holman - Flooring, Painting, Lockers, MEP Finishes in Locker Room Area
- Holman - Concrete Foundations and CMU Elevator Shaft & Vestibule Entrance
- Holman - Precast Erection at Gym B Addition (Beginning 11/27/23)
- Parkwood - Concrete Foundations for Storm Shelter Addition and Site Plumbing
- Parkwood - Precast Erection at Storm Shelter Addition (Beginning December 2023)
- Willow Brook - Site Utilities & Concrete Foundations for Storm Shelter Addition
- Willow Brook - Secure Vestibule Renovation
- Bridgeway - Stage Addition - Interior Fit-Out, Site Concrete
- Bridgeway - Site Utilities for Storm Shelter Addition

# Construction Activity: Holman – Locker Bases & Paint in Locker Area



# Construction Activity: *Holman – Site Utilities*





# Construction Activity: Parkwood – Storefront Entrance Complete



## Construction Activity: Parkwood – Slab on Grade & Waterproofing



**SMWILSON**  
100<sup>th</sup>  
ANNIVERSARY

 **PATTONVILLE**  
SCHOOL DISTRICT



# Construction Activity: Willow Brook – Foundations for Storm Shelter Addition



**SMWILSON**  
100<sup>th</sup>  
ANNIVERSARY

 **PATTONVILLE**  
SCHOOL DISTRICT

## Construction Activity: Willow Brook – Phase 2 Interior Renovation

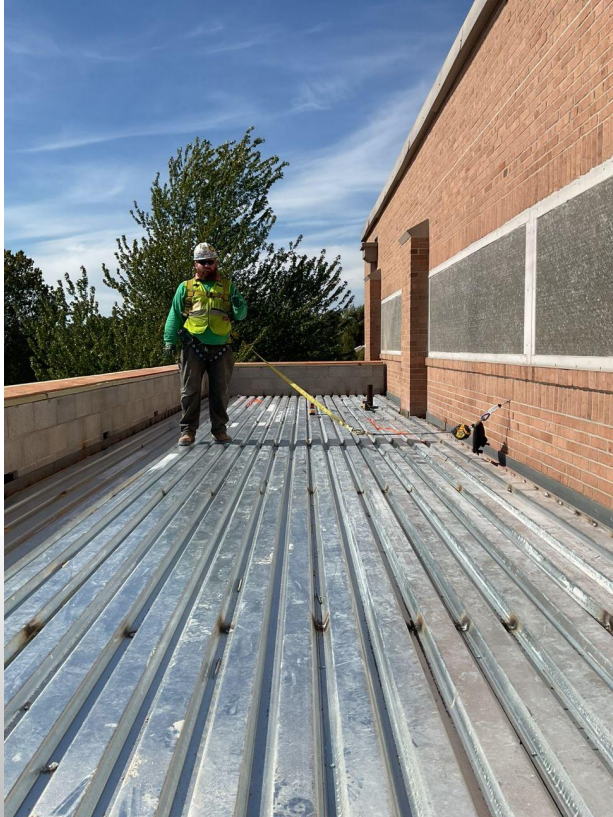
**SMWILSON**  
100<sup>th</sup>  
ANNIVERSARY



 **PATTONVILLE**  
SCHOOL DISTRICT



## Construction Activity: *Bridgeway – Stage Addition Decking & Roofing*



**SMWILSON**  
100<sup>th</sup>  
ANNIVERSARY



## Construction Activity: *Bridgeway – Stage Addition Masonry and Site Prep*



**SMWILSON**  
100<sup>th</sup>  
ANNIVERSARY





## Construction Activity: Bridgeway - Stage Addition Interiors



**SMWILSON**  
100<sup>th</sup>  
ANNIVERSARY

 **PATTONVILLE**  
SCHOOL DISTRICT



# Precast Erection Update

- All concrete that is placed on-site is tested to ensure it meets the design strength
- There are very stringent specifications for the construction of a storm rated structure
- There was a small portion of the foundations at Holman and Parkwood that did meet the design strength
- At both schools we are adding additional reinforcement and foundations to supplement the concrete installed
- This will cause an initial 6 week delay of the precast erection at Holman and Parkwood, but we are working with the erector to maintain the schedules for Willow Brook & Bridgeway.
- In the future we will be looking into strategies and possible re-sequencing of activities to mitigate impacts of the final completion of the additions.

# Pattonville School District – Phase 1

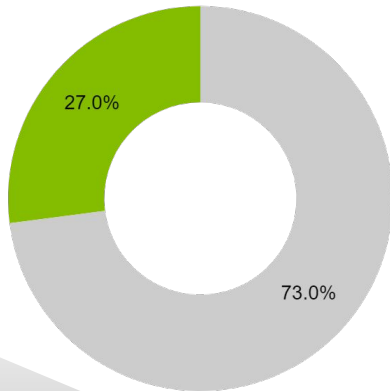
## Budget Dashboard:

Thru October Billing 2023

### Owner Allowances

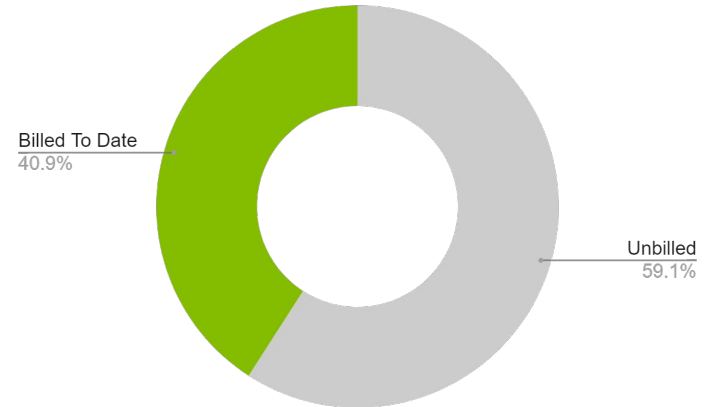
#### District Allowances

● Available ● Used to Date



Owner Allowances: \$896,199  
Used to date: \$332,156

### GMP Value Billed to Date



GMP Total: \$23,143,623  
Billed to date: \$16,021,718