



Pattonville Prop S – Phase 1 Construction Update

December 2023

Monthly Construction Update

Upcoming Highlights December 2023

- Holman - Flooring, MEP Finishes, Punch List & Turnover in Locker Room Area
- Holman - Concrete Foundations and CMU Elevator Shaft & Vestibule Entrance
- Parkwood - Concrete Foundations for Storm Shelter Addition and Site Plumbing
- Willow Brook - Site Utilities & Concrete Foundations for Storm Shelter Addition
- Willow Brook - Secure Vestibule Renovation
- Bridgeway - Stage Addition – Interior Fit-Out, Site Concrete
- Bridgeway - Site Utilities for Storm Shelter Addition

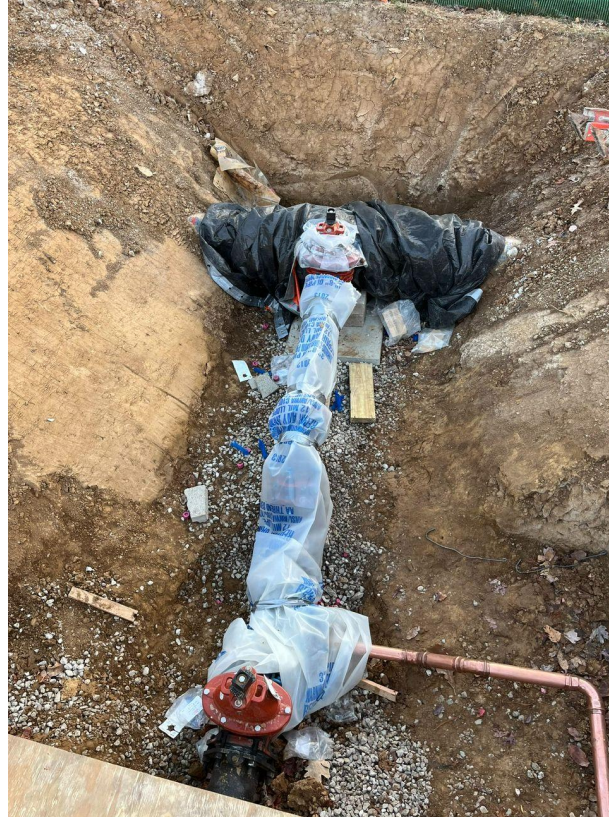
Construction Activity: *Holman – New Lockers*



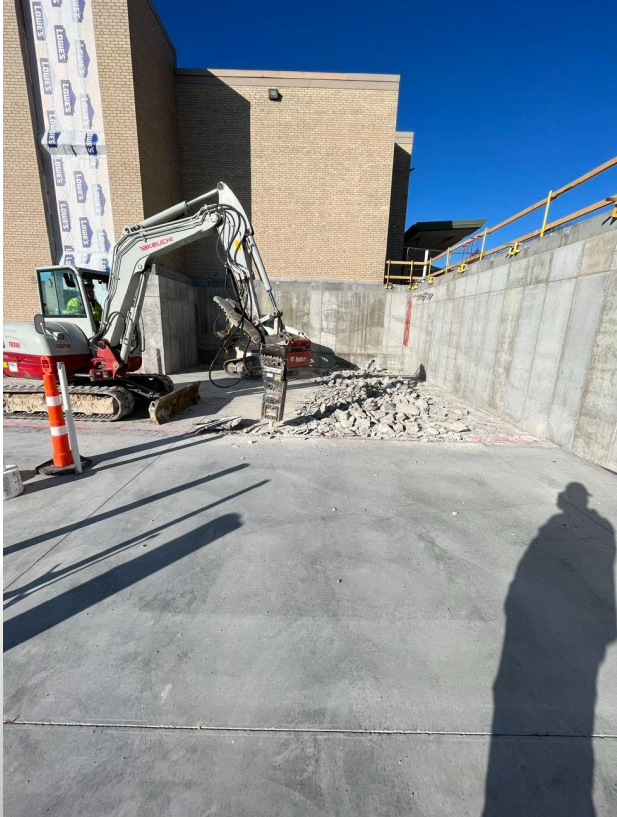
Construction Activity: Holman - Concrete Foundation Remediation



Construction Activity: Parkwood – Domestic Water Tap Complete



Construction Activity: *Parkwood – Concrete Foundation Remediation*



SMWILSON
100th
ANNIVERSARY

 **PATTONVILLE**
SCHOOL DISTRICT

Construction Activity: Willow Brook – Foundations & Waterproofing



SMWILSON
100th
ANNIVERSARY

 **PATTONVILLE**
SCHOOL DISTRICT

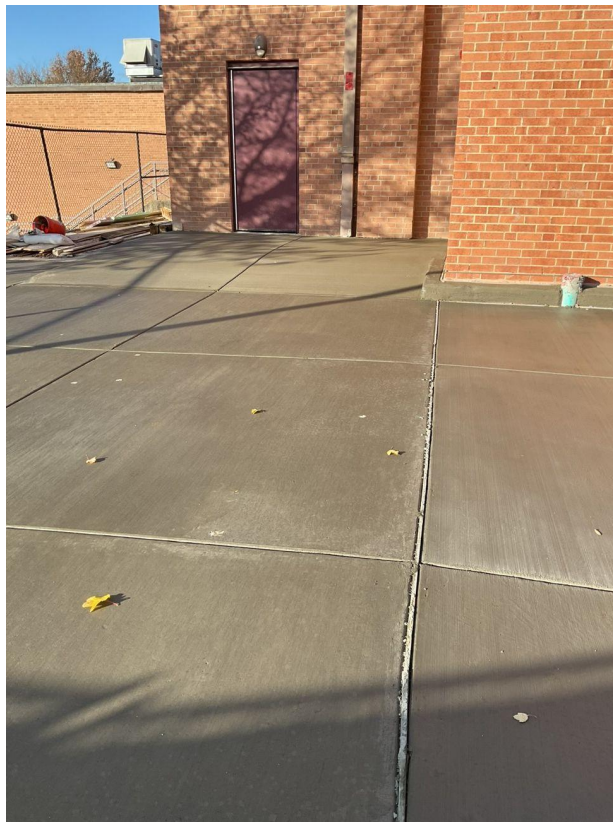
Construction Activity: Willow Brook – Phase 2 Interior Renovation

SMWILSON
100th
ANNIVERSARY



 **PATTONVILLE**
SCHOOL DISTRICT

Construction Activity: *Bridgeway – New Sidewalk at Stage Addition*



SMWILSON
100th
ANNIVERSARY



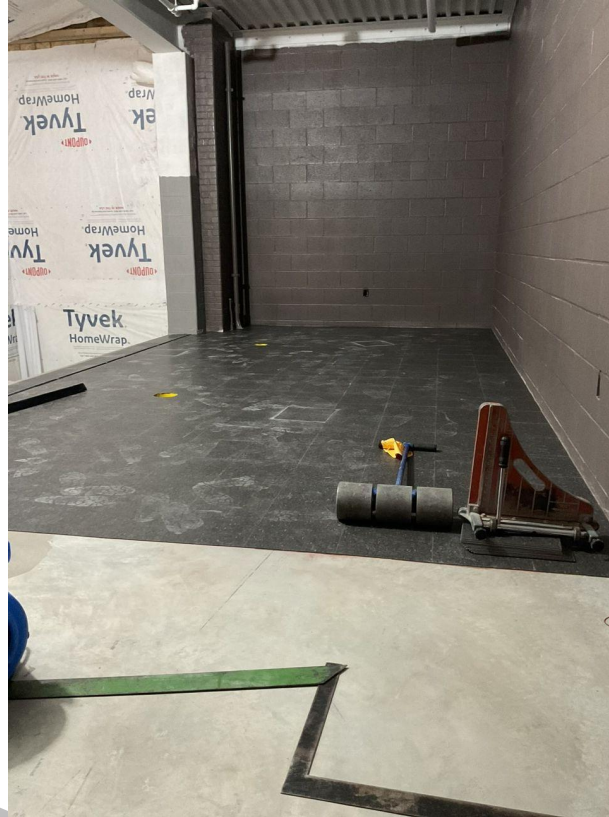
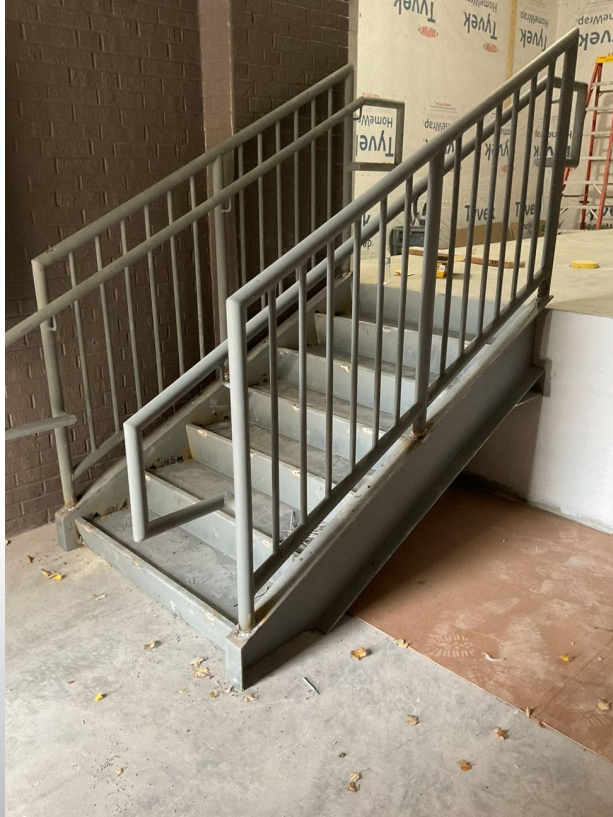
Construction Activity: *Bridgeway – Stage Addition MEP Fit-Out*



SMWILSON
100th
ANNIVERSARY

 **PATTONVILLE**
SCHOOL DISTRICT

Construction Activity: Bridgeway – Stage Addition Interiors



SMWILSON
100th
ANNIVERSARY



Precast Erection Update

- Holman Middle School (1/15/24 - 1/26/24)
- Parkwood Elementary School (1/29/24 - 2/09/24)
- Bridgeway Elementary School (2/12/24 - 2/23/24)
- Willow Brook Elementary School (3/14/24 - 3/24/24)

Pattonville School District – Phase 1

Budget Dashboard:

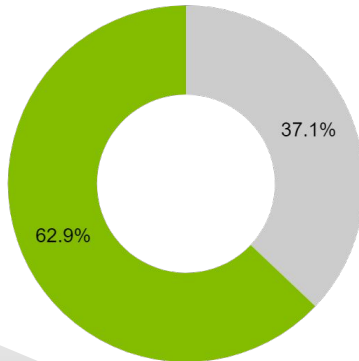
Thru October Billing 2023

Owner Allowances

District Allowances

Total Available: \$896,199

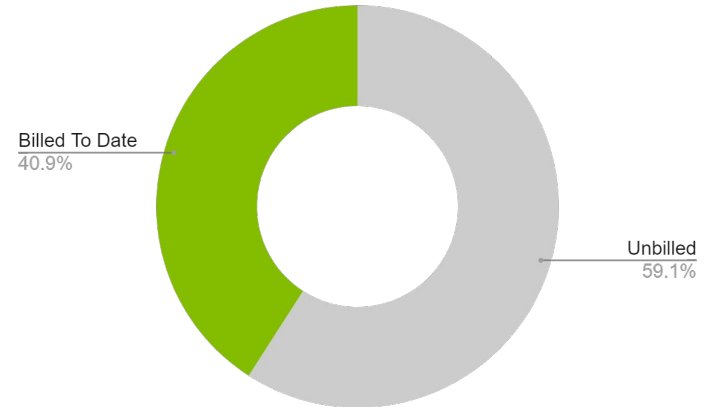
● Used to Date ● Remaining



Owner Allowances: \$896,199

Used to date: \$332,156

GMP Value Billed to Date



GMP Total: \$23,143,623
Billed to date: \$16,021,718