



# **Pattonville Prop S – Phase 1 Construction Update**

February 2024

# Monthly Construction Update

Upcoming Highlights February 2024

- Holman - Storm Shelter Addition - Interior MEP Rough, Roof Topping Slab, Concrete Slab on Grade
- Holman - Waterproofing & Site Storm Piping & Structures
- Parkwood - Precast Panel Erection 2/2 - 2/14/24
- Parkwood - Storm Shelter Interior Fit Out & Roof Topping Slab
- Willow Brook - Concrete Slab on Grade
- Willow Brook - Phase 3 Renovation Demolition, MEP Rough, Framing & Drywall
- Bridgeway - Stage Addition - Stage Rigging and Lighting
- Bridgeway - Storm Shelter Addition - Precast Panel Erection 2/15 - 2/29/24

# Construction Activity: Holman – Precast Erection Complete



# Construction Activity: Holman – Structural Steel

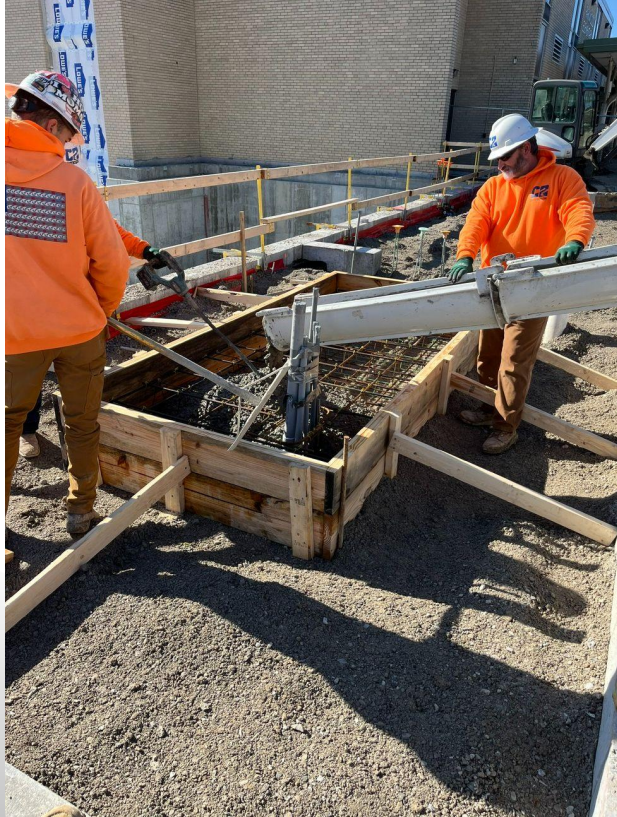




# Construction Activity: Parkwood – New Concrete Stairs



# Construction Activity: Parkwood – Concrete Generator Pad

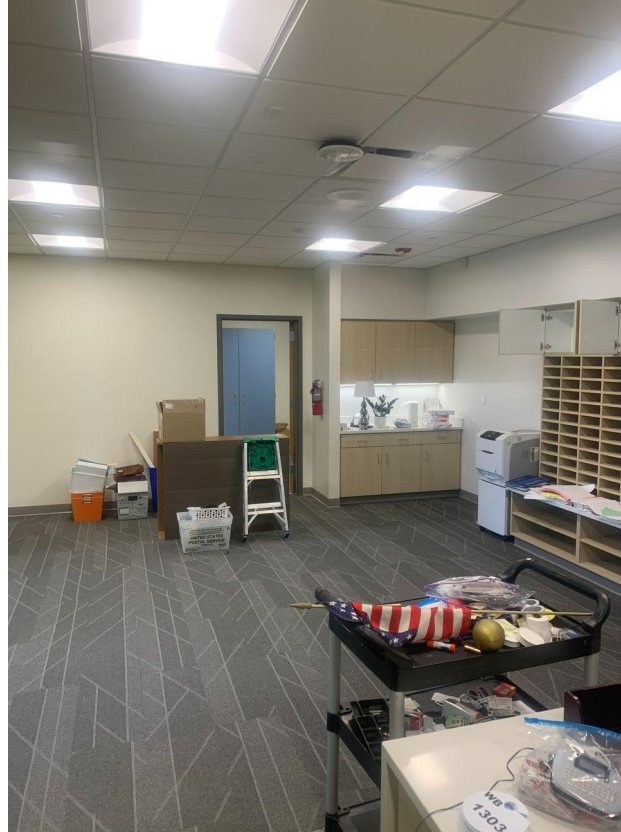


**SMWILSON**  
100<sup>th</sup>  
ANNIVERSARY

 **PATTONVILLE**  
SCHOOL DISTRICT



# Construction Activity: Willow Brook – Admin Offices Renovation Complete



**SMWILSON**  
100<sup>th</sup>  
ANNIVERSARY

 **PATTONVILLE**  
SCHOOL DISTRICT

# Construction Activity: Willow Brook – Phase 3 Renovation Started

**SMWILSON**  
100<sup>th</sup>  
ANNIVERSARY



**PATTONVILLE**  
SCHOOL DISTRICT



## Construction Activity: *Bridgeway – Seating for Outdoor Classroom*



**SMWILSON**  
100<sup>th</sup>  
ANNIVERSARY

 **PATTONVILLE**  
SCHOOL DISTRICT

# Construction Activity: *Bridgeway – Structural Steel for Storm Shelter Connector*

**SMWILSON**  
100<sup>th</sup>  
ANNIVERSARY



 **PATTONVILLE**  
SCHOOL DISTRICT

# Precast Erection Update

- Holman Middle School (Complete)
- Parkwood Elementary School (2/2/24 - 2/14/24)
- Bridgeway Elementary School (2/15/24 - 2/28/24)
- Willow Brook Elementary School (3/14/24 - 3/24/24)



# Pattonville School District – Phase 1

## Budget Dashboard:

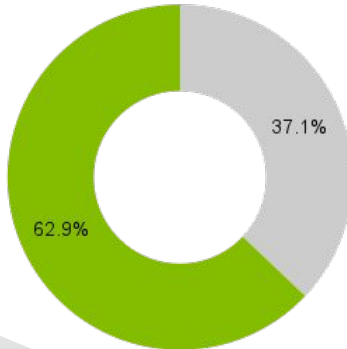
Thru January Billing 2024

### Owner Allowances

#### District Allowances

Total Available: \$896,199

● Used to Date ● Remaining



Owner Allowances: \$896,199  
Used to date: \$332,156

### GMP Value Billed to Date



GMP Total: \$39,378,974  
Billed to date: \$21,960,623