

Project Update

St. Pius X Catholic School

February 02, 2024



WE BUILD GREAT SCHOOLS INDUSTRIAL FACILITIES HEALTHCARE FACILITIES COMMUNITIES LEADERS FUTURES .

Table of Contents



- Team Members
- Summary Report
- Weekly Progress Update
- Subcontractors
- Project Milestones
- Look Ahead Schedule
- Progress Updates
- Project Photos
- Contact Information



PARRISH
CONSTRUCTION GROUP

TEAMS

WE BUILD GREAT

ST. PIUS CATHOLIC SCHOOL TEAM MEMBERS



Owner	Architect/Engineer	Parrish Construction Group
<ul style="list-style-type: none">• Catholic Education of North Georgia, Inc.• St. Pius X Catholic High School	<ul style="list-style-type: none">• CDH Architecture	<ul style="list-style-type: none">• David Loudermilk, Project Director• Alex Johnson, Project Manager• Art Cofelice, Superintendent• Trey DeRieux, Project Engineer• Drew Plunkett, Asst. Superintendent• Zack Cofelice, Asst. Superintendent



PARRISH
CONSTRUCTION GROUP

SUMMARY REPORT

WE BUILD GREAT

SUMMARY REPORT

Month	Calendar Days	Planned Weather Days	Claimed Weather Days
MARCH 2023	31	6	3
APRIL 2023	30	4	4
MAY 2023	31	2	1
JUNE 2023	30	3	2
JULY 2023	31	4	3
AUGUST 2023	31	3	9
SEPTEMBER 2023	30	2	3
OCTOBER 2023	31	3	1
NOVEMBER 2023	30	5	2
DECEMBER 2023	31	8	1
JANUARY 2024	31	11	7
FEBRUARY 2024	29	8	-
MARCH 2024	31	6	-

Critical Tasks	% Complete
SITWORK	95%
FOUNDATIONS	100%
UNDERGROUND UTILITIES	100%
SLAB ON GRADE/DECK	100%
STEEL	95%
ELECTRICAL	90%
PLUMBING	90%
MECHANICAL	85%
ROOFING	90%



PARISH
CONSTRUCTION GROUP

PROGRESS UPDATE

WE BUILD GREAT

WEEKLY PROGRESS UPDATE

- SIDEWALKS AROUND BUILDING Poured
- INSTALLING PLUMBING FIXTURES
- FINISHING UP OVERHEAD MEPs ON 2ND LEVEL
- WATER METER INSTALLED AT JOHNSON ROAD
- ELEVATOR INSTALL IN PROGRESS
- Poured ASPHALT FOR ENTRANCE DRIVE



PARRISH
CONSTRUCTION GROUP

PROJECT UPDATE

WE BUILD GREAT

SUBCONTRACTOR PROGRESS

Scope of Work	Subcontractor	Percent Complete
Site Work		
GRADING AND UTILITIES	RUBY-COLLINS	95%
UNDERGROUND GAS LINE	POLK COUNTY PUBLIC SERVICE	100%
Building Systems		
MECHANICAL	GEORGIA MECHANICAL	85%
ELECTRICAL	ALL STATE ELECTRICAL CONTRACTORS	90%
PLUMBING	POLK COUNTY PUBLIC SERVICE	90%
FIRE PROTECTION	GAINESVILLE FIRE PROTECTION	95%
Building Structure		
FOUNDATION AND SLAB ON GRADE (SOG)/DECK	PARRISH CONCRETE	100%
STRUCTURAL STEEL FRAMING	TRINITY FABRICATORS	95%
EXTERIOR WALLS	PARRISH MASONRY	100%
INTERIOR WALLS	PARRISH MASONRY/HOLT & HOLT	100%



PARRISH
CONSTRUCTION GROUP

PROJECT UPDATE

WE BUILD GREAT

SUBCONTRACTOR PROGRESS

Scope of Work	Subcontractor	Percent Complete
Building Envelope		
BRICK	PARRISH MASONRY	95%
WINDOWS/STOREFRONT	COMMERCIAL GLASS & MIRRORS	95%
Building Interiors		
FLOORING	PERIMETER FLOORS	15%
DRYWALL	HOLT & HOLT	100%
CEILINGS	HOLT & HOLT	80%
PAINTING	MCs PAINTING	85%



PARRISH
CONSTRUCTION GROUP

PROJECT UPDATE

WE BUILD GREAT

FOUR WEEK LOOK AHEAD

ST. PIUS X CATHOLIC SCHOOL FIELD HOUSE

Project Manager: Alex Johnson

Superintendent: Art Cofelice

4 Week - Near Term Schedule

WEEK OF 2/5 TO 3/3

Work Description	Involved Trades	Week 1							Week 2							Week 3														
		M	T	W	T	F	SS	SS	M	T	W	T	F	SS	SS	M	T	W	T	F	SS	SS								
		2/5	2/6	2/7	2/8	2/9	2/10	2/11	2/12	2/13	2/14	2/15	2/16	2/17	2/18	2/19	2/20	2/21	2/22	2/23	2/24	2/25	2/26	2/27	2/28	2/29	3/1	3/2	3/3	
SWITCHBACK RAMPS	PARRISH CONCRETE	xxx	xxx	xxx	xxx	xxx																								
CANOPIES	TENNESSEE VALLEY METALS			xxx	xxx	xxx			xxx	xxx																				
PERMANENT AIR	GEORGIA MECHANICAL	xxx	xxx	xxx																										
PLUMBING FIXTURES	PCPS	xxx	xxx	xxx	xxx	xxx																								
INTERIOR DOORS	COOK & BOARDMAN	xxx	xxx	xxx	xxx	xxx																								
STRENGTH TRAINING FLOORING	SPX								xxx	xxx	xxx	xxx	xxx																	
METAL ROOFING	BATES ROOFING	xxx	xxx	xxx	xxx	xxx																								
ELEVATOR	SCHINDLER	xxx	xxx	xxx	xxx	xxx			xxx	xxx	xxx	xxx	xxx																	
CEILING TILE	HOLT & HOLT				xxx	xxx			xxx	xxx																				
METAL PANEL	BRISTOL ENGINEERING								xxx	xxx	xxx																			
FINAL COAT OF PAINT	MCS PAINTING								xxx	xxx	xxx	xxx	xxx																	
SIGNAGE	REI SIGNS															xxx	xxx													
FLOORING	PERIMETER FLOORS															xxx	xxx	xxx	xxx	xxx										
CASEWORK	ATL CASEWORK																		xxx	xxx				xxx	xxx					

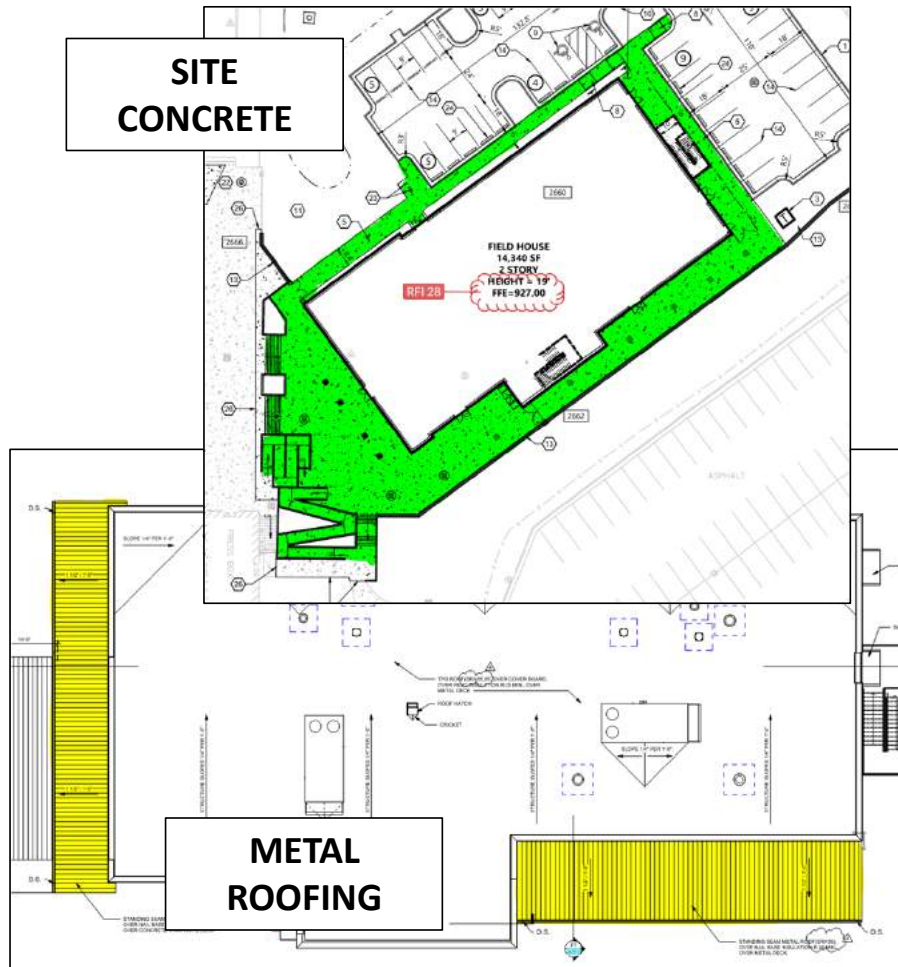


PARRISH
CONSTRUCTION GROUP

PROJECT UPDATE

WE BUILD GREAT

PROGRESS UPDATE



**GREEN HIGHLIGHTED SECTIONS
HAVE BEEN COMPLETED; YELLOW
HIGHLIGHTED IN PROGRESS**

**CONCRETE POURED AROUND
BUILDING; ASPHALT LAID AT
ENTRANCE DRIVE; WATER METER
INSTALLED;**

**PLUMBING PICTURES IN
PROGRESS; ELEVATOR IN
PROGRESS; PAINTING IN
PROGRESS; METAL ROOFING TO
START NEXT WEEK; CEILING TILE
TO START NEXT WEEK**



PARRISH
CONSTRUCTION GROUP

PROJECT PHOTOS

WE BUILD GREAT _____.

PROJECT PHOTOS



CONCRETE PLAZA POURED



PARRISH
CONSTRUCTION GROUP

PROJECT PHOTOS

WE BUILD GREAT _____.

PROJECT PHOTOS

ELEVATOR INSTALL IN PROGRESS





PARRISH
CONSTRUCTION GROUP

PROJECT PHOTOS

WE BUILD GREAT

PROJECT PHOTOS

SIDEWALKS AROUND BUILDING POURED





PARRISH
CONSTRUCTION GROUP

PROJECT PHOTOS

WE BUILD GREAT _____.

PROJECT PHOTOS



ENTRANCE DRIVE ASPHALT POURED

Contact Information



David Loudermilk

Project Director
478.256.1839

dloudermilk@parrishconstruction.com



Alex Johnson

Project Manager
470.540.0047

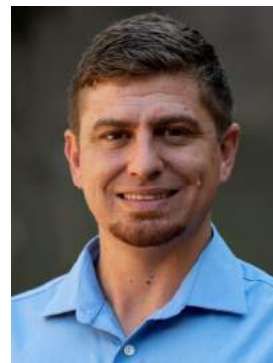
ajohnson@parrishconstruction.com



Art Cofelice

Sr. Superintendent
770.880.3762

acofelice@parrishconstruction.com



Zack Cofelice

Superintendent
470.925.3525

zcofelice@parrishconstruction.com



Trey DeRieux

Project Engineer
470.442.3169

tderieux@parrishconstruction.com



Drew Plunkett

Asst. Superintendent
678.215.5193

dplunkett@parrishconstruction.com

WE BUILD GREAT SCHOOLS INDUSTRIAL FACILITIES HEALTHCARE FACILITIES COMMUNITIES LEADERS FUTURES .