



SEAFORD ELEMENTARY SCHOOLS



JANUARY 4, 2023

Presented by:

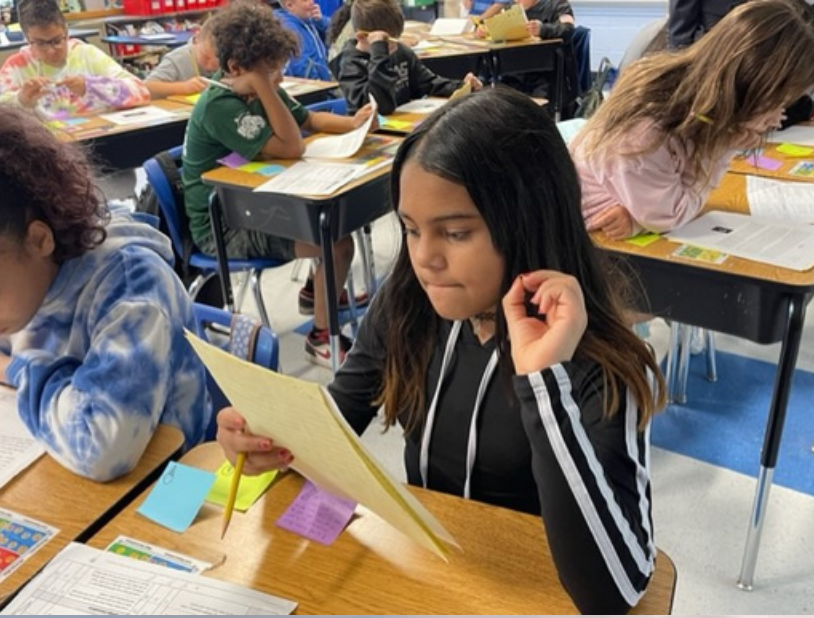
Debra Emmerich – Manor School Principal

Mary-Ellen Kakalos – Manor Assistant Principal

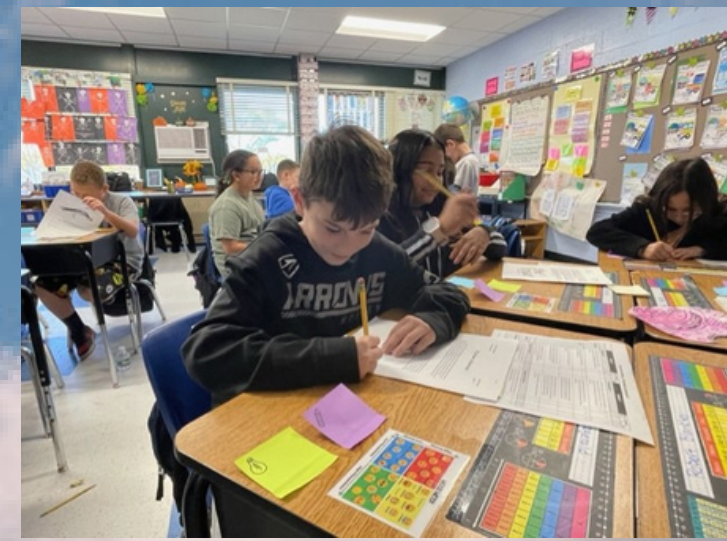
Thomas Burke – Harbor School Principal

Caroline Stringer – Harbor Assistant Principal

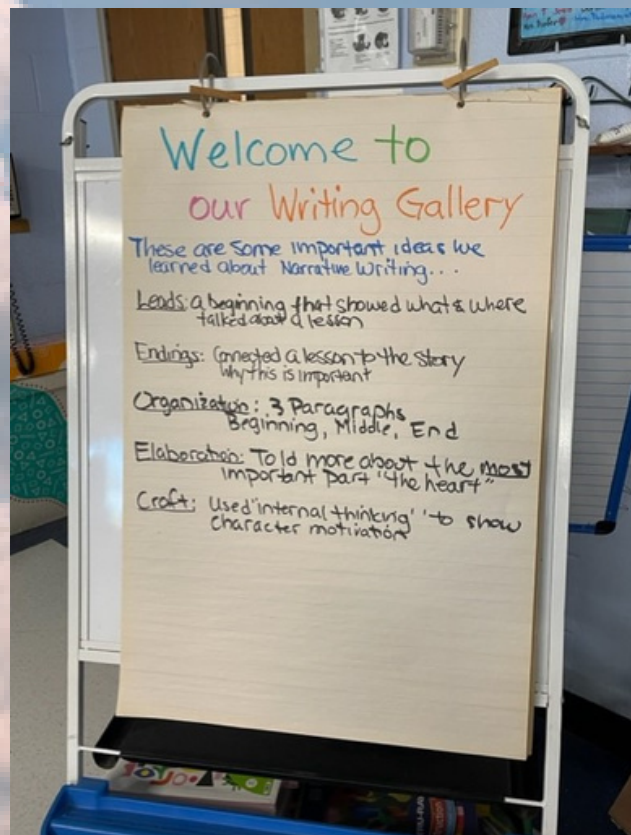




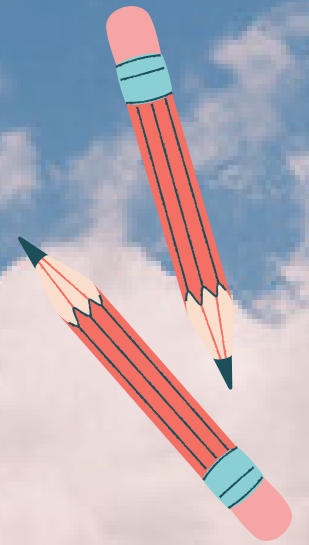
Teachers College Reading and Writing



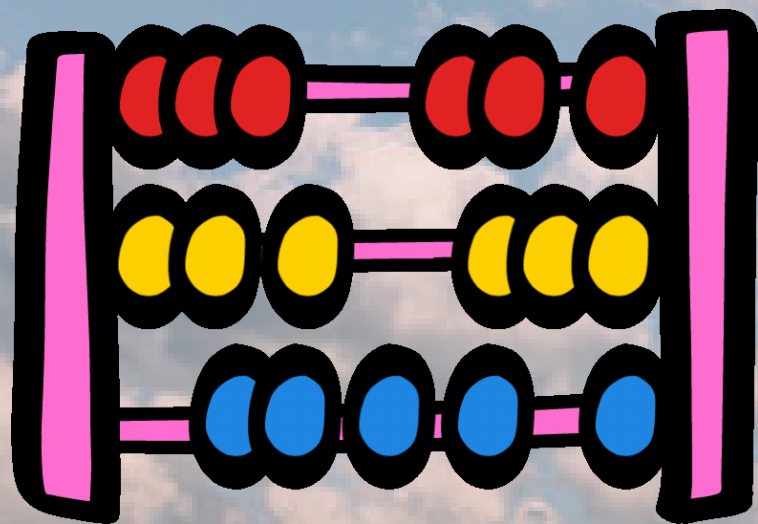
- Our teachers continue to receive training from the Reading and Writing Workshop.
- This year, our teachers are exploring new units and taking new challenges when teaching our children to read and write.



GO MATH



- Engaging and interactive approach to covering State standards
- Research-based instructional approaches
- Best practices from around the world
- Online Student Edition & Student Workbooks
- Rich digital resources personalize learning: Interactive whiteboard lessons, iTools, real-world videos, Animated Math Models, MegaMath, online assessments and virtual manipulatives for engaged learning.
- Teacher support: lesson planning, teaching strategies, assessment, activities for remediation, extension and enrichment, to allow for differentiated instruction
- Professional development videos
- 21st-century educational technology
- Think Central – Online Parent Support Resource



FOSS Science Curriculum



- FOSS stands for Full Option Science System.
- Teachers and students learn best by doing the experiments.
- Our students become scientists.
- Use of outdoors for learning (Ex. Light/Soil units)
- FOSS is aligned to the Next Generation Science Standards.

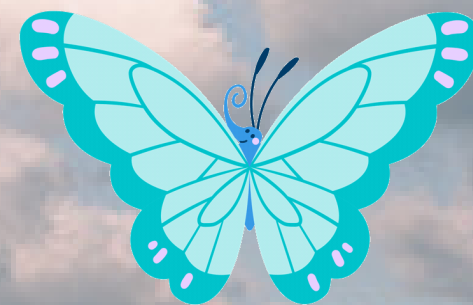
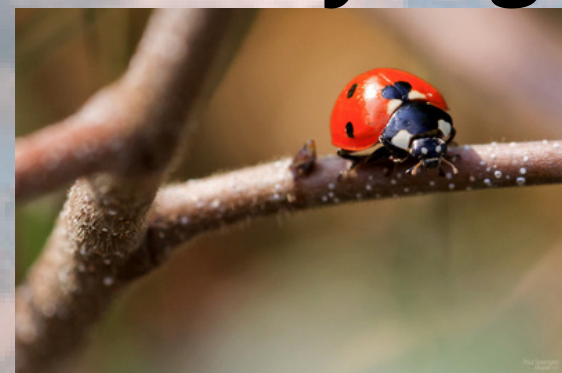


Life Science Units

K I



1st Ladybugs 2nd Butterflies



3rd Frogs



4th Hermit
Crabs



5th
Mealworms



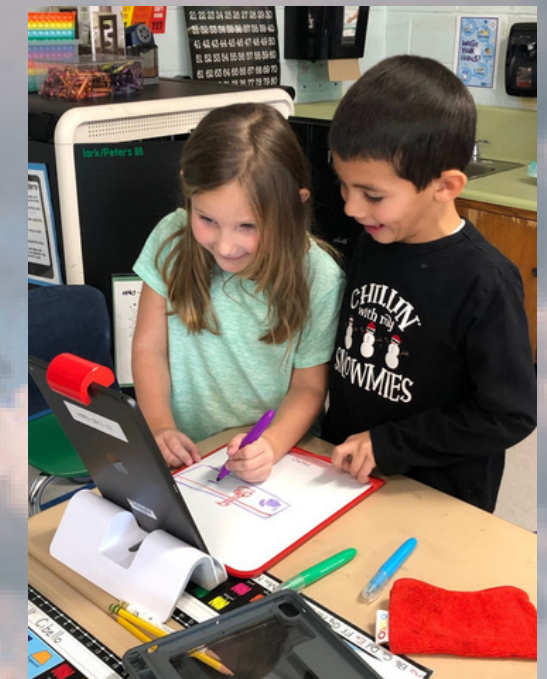
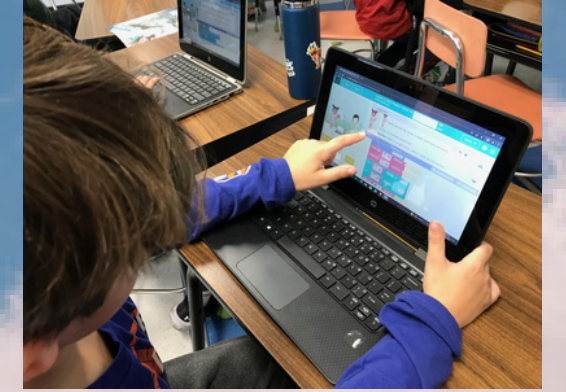
STEAM/CODING

Learning Process

- Investigate
- Discovery
- Connect
- Create
- Reflect

Activities

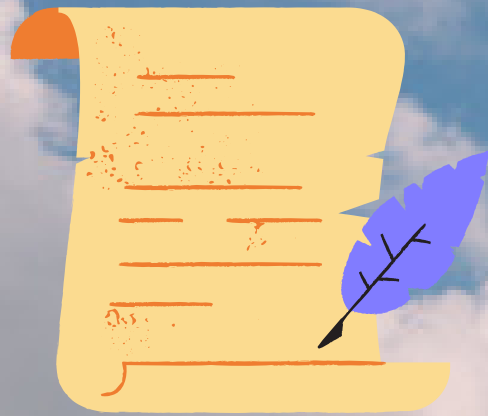
- Hour of Code/Code.org
- STEAMNight/STEAM Challenges
- STEAM Carts



Social Studies

Putnam Northern Westchester BOCES

Integrated SS/ELA Studies Weekly



- Continued use of the Putnam Online Social Studies Curriculum Resource.
- It is updated each year.
- The resources include specific procedures, student worksheets, informational texts, rubrics and standards.
- Reading informational text, writing, and speaking and listening are incorporated skills
- Interdisciplinary units: Ex. Grade 5 Westward Expansion Unit compliments TC's Essay Writing Unit
- TEAMS enables group work projects (Ex. Grade 4 Native Americans).
- Studies Weekly to enhance the Putnam BOCES SS/ELA.
- Individual "newspaper style" publication

<https://app.studiesweekly.com/online/publications/11124/units/11125/articles/11126>



New York Studies Weekly

Special Area Curricula

Art – focuses on elements of design, self-expression, and process of art (TAB methodology)

Music – Movement, Music, Performance and Cultural and Tradition Integration

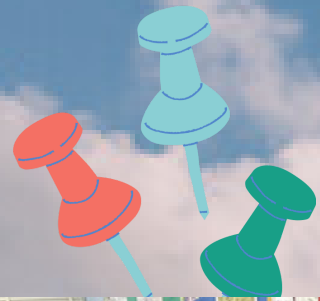
Band – Small group lesson, SmartMusic Technology, Concerts

LIFT – Project Lead the Way, author studies, research process, and innovative project-based activities

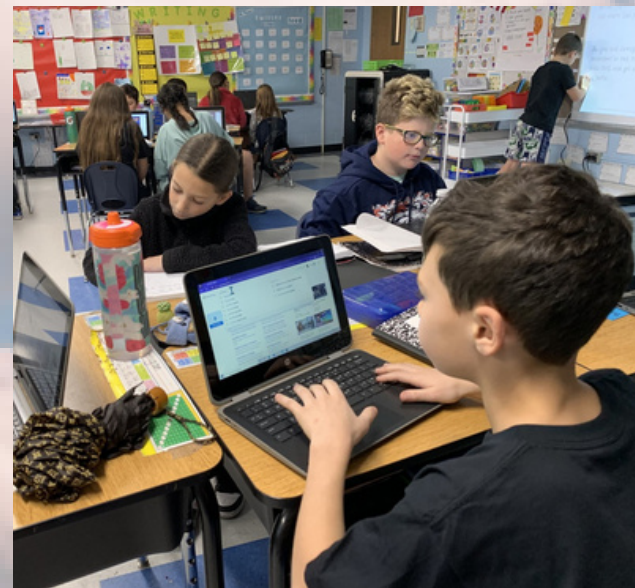
Physical Education – Outdoor gym space, Autumn Classic, Quidditch, Yoga



Technology Resources



K-2 iPad carts in each classroom
3-5 Laptop cart in each classroom
SeeSaw
TEAMS



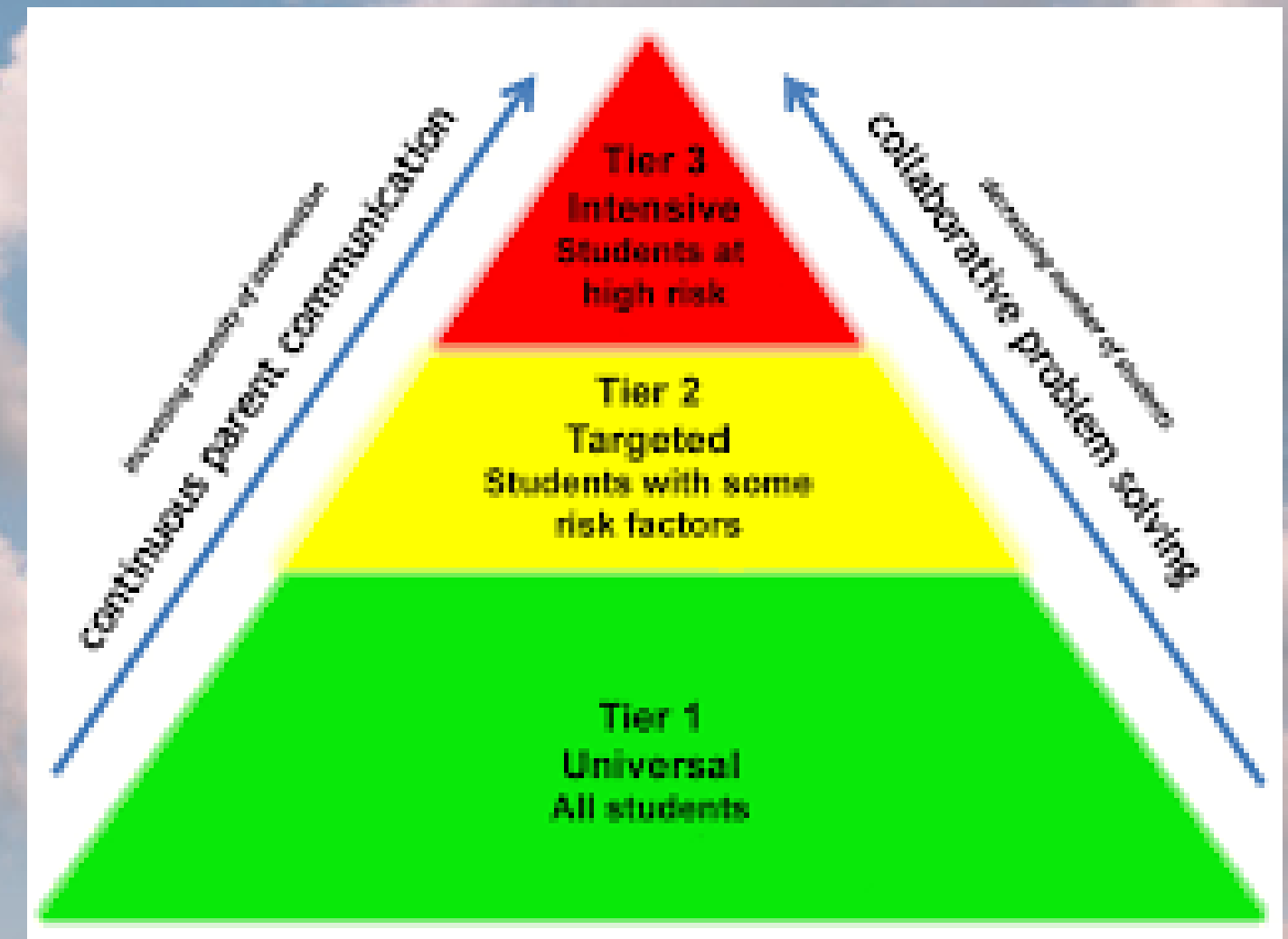
Academic Support & Response to Intervention (RtI)

Academic Support is provided by reading and math teachers through our District's **RTI Plan**.

Teachers provide **Tier 1 interventions** in the classroom. This year there is an additional Federally funded position to assist with this service.

Tier 2 and 3 Interventions are conducted in small groups with:

- High quality, research-based instruction and intervention
- Interventions with increasing intensity
- Universal screening for all 3 times per year
- Systematic and frequent progress monitoring to determine reading support
- Data-based decision-making
- Multi-tiered model



NWEA – The Universal Screener



- **Students take assessments in Reading and Math.**
- **The assessment is administered three times a year.**
- **The NWEA is a nationally normed assessment.**
- **The NWEA is adaptive and unique for each student.**
- **The assessment identifies areas of strength and growth.**
- **Data is used to target instruction and determine academic services.**
- **A parent report is generated and mailed home after each test.**



Student Support Services

Physical Therapists

Occupational Therapists

Speech Therapists

ENL

Social Workers

Psychologists

Behavior Consultant

Nurses

Social Emotional Learning

Lions Quest

Character Counts

Mindful Minute

Habits of Mind

Family Connect Night

Guidance Lessons

Monthly Workshops

Coffee & Conversation

Outstanding Citizens

Family Connect Night Choice Board

Feel free to use any of these ideas to spend quality time with your family tonight!

Read a story	Make dinner	Take a walk
Play a board game	Watch a movie	Color or draw a picture
Family dance party	Try a new food	Share about your day
Exercise together	Build a fort	Bake cookies



Habits of Mind

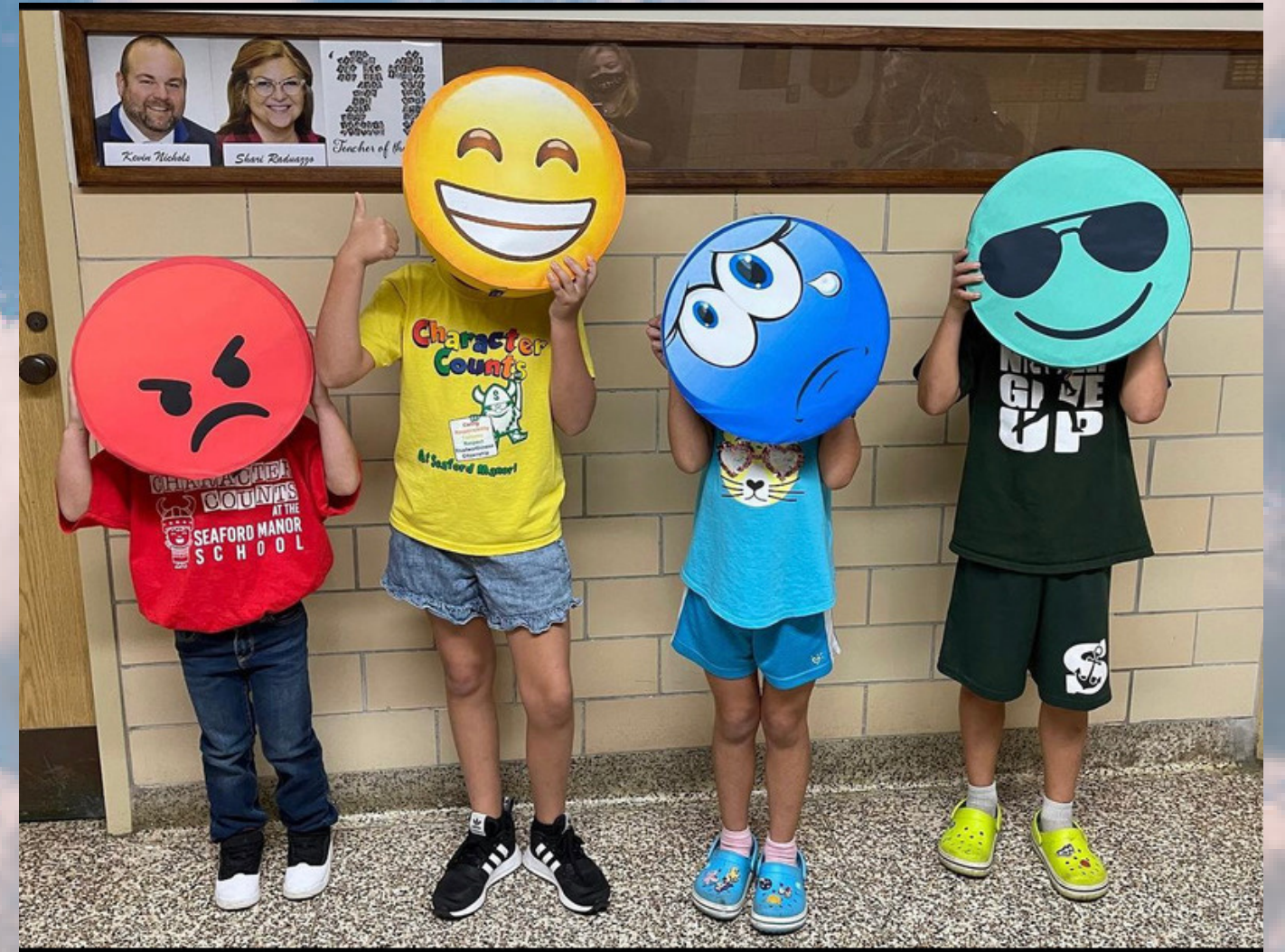
International Habits of Mind School of Excellence

 <p>1. Persistence Don't quit! Persevere to see things through to completion, remaining focused. Looking for ways to reach your goal when work gets tough.</p>	 <p>2. Managing Impulsivity Stop, think, then act! Thinking before acting, remaining calm, thoughtful and deliberate.</p>	 <p>3. Listening with Understanding and Empathy Understand others! Listening to what others say to understand their thoughts and ideas. Take an effort to consider another's point of view and emotions.</p>	 <p>4. Thinking Flexibly Look at it another way! Be able to change perspective, generate alternative solutions.</p>
 <p>5. Thinking about your thinking Metacognition! Know your strategy! Being aware of your own thoughts, strategies, feelings and beliefs and their effects on others.</p>	 <p>6. Striving for Accuracy Check it again! Always doing your best, following standards. (Thinking and trying step by step.)</p>	 <p>7. Questioning and Problem Posing How do you know? Form a question! Identify what you need to know & developing questioning strategies to create your own inquiries to solve.</p>	 <p>8. Applying past knowledge to new situations Use what you know! Relating your knowledge, skills, and experiences to new situations.</p>
 <p>9. Thinking & communicating with clarity and precision Be clear! Using language, mathematical symbols, and diagrams, using words, numbers, and actions to communicate clearly.</p>	 <p>10. Gather data through all senses Use your senses! Pay attention to the world around you. Gather data through all the senses: look, touch, smell, taste and sight.</p>	 <p>11. Creating, imagining, and innovating Be a dreamer! Generating new ideas, using imagination, and creating.</p>	 <p>12. Respond with self-control and self-management Have fun staying focused! Finding the world around you, responding and taking things on with attention and control.</p>
 <p>13. Taking responsible risks Stretch yourself! Being adventurous, being on the edge of what you know, trying something new.</p>	 <p>14. Finding humor Laugh often! Finding the whimsical, imaginative and unexpected, being able to laugh at yourself.</p>	 <p>15. Thinking interdependently Work together! Being able to work on and learn from others in reciprocal situations.</p>	 <p>16. Remaining open to continued learning Learn from everyone! Being humble and open to what others have to say.</p>





RULER



CLUBS

Sponsored by both the district and the PTA.

- Student Council
- Jazz Band
- Book Club
- Technology Club
- Lego Club
- Drama Club
- Art Therapy
- Yoga Club
- Chess Club
- Phys. Ed. Club
- Astronomy
- Mindful Movement



**Unity Day
Red Ribbon Week**

Heart Prints

Food Drive

Toy Drive

SOUPer Bowl

St. Jude's

Mathathon

Valentines for

Vets

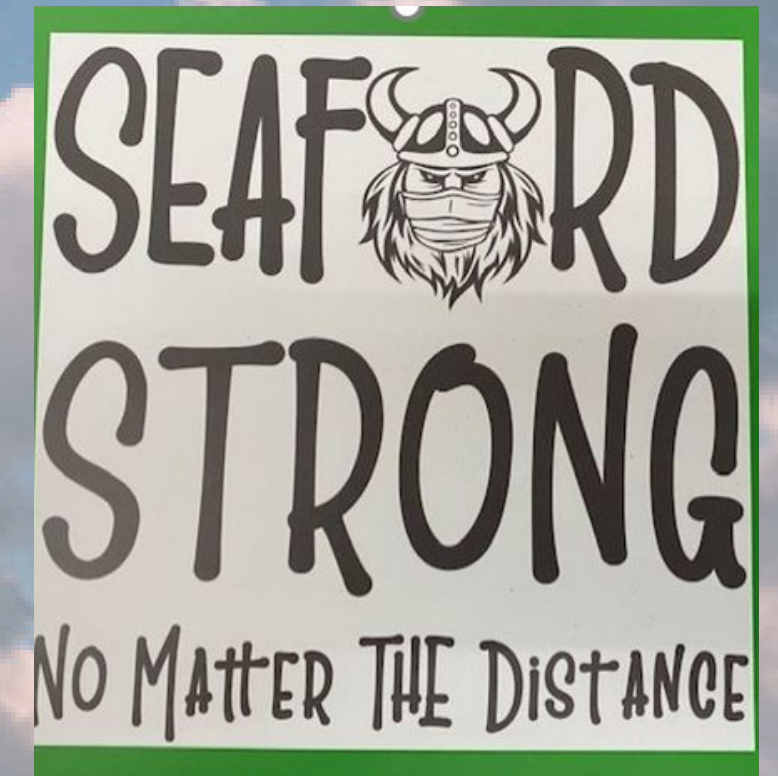
Thank you

Letters to Police

Officers &

Firefighters

Prideful Moments





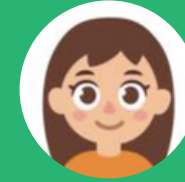
LIFT

a trailblazing approach
to educating our students

WE HAVE **LIFT** OFF!

Welcome to a new kind of learning.
With Seaford's newest interdisciplinary enrichment program, students will explore the pillars of research and investigation, project-based learning, wellness, and technology integration.

MEET THE TEAM:



Mrs. Rosenberg



Ms. Kukla



Mr. Maricondo

L

LIBRARY & RESEARCH

Find books, conduct research, and have fun! The library is the school's center for active and engaged learning. Here, we cultivate digital citizens, skillful researchers, critical thinkers, makers, and enthusiastic readers.

I

INNOVATION // PROJECT LEAD THE WAY

Young learners are naturally wired for discovery. You've seen it. Discovery is what makes them tick. PLTW taps into students' exploratory nature, engages them in learning that feels like play, and encourages them to keep discovering - now and for whatever future they choose.

F

FIT MINDS & BODIES

Move your body, grow your brain. Students will discover the interconnectedness of healthy mind and movement through hands-on activities that nurture inquiry, mindfulness, growth, and healthy living.

T

TECHNOLOGY & STEAM CHALLENGES

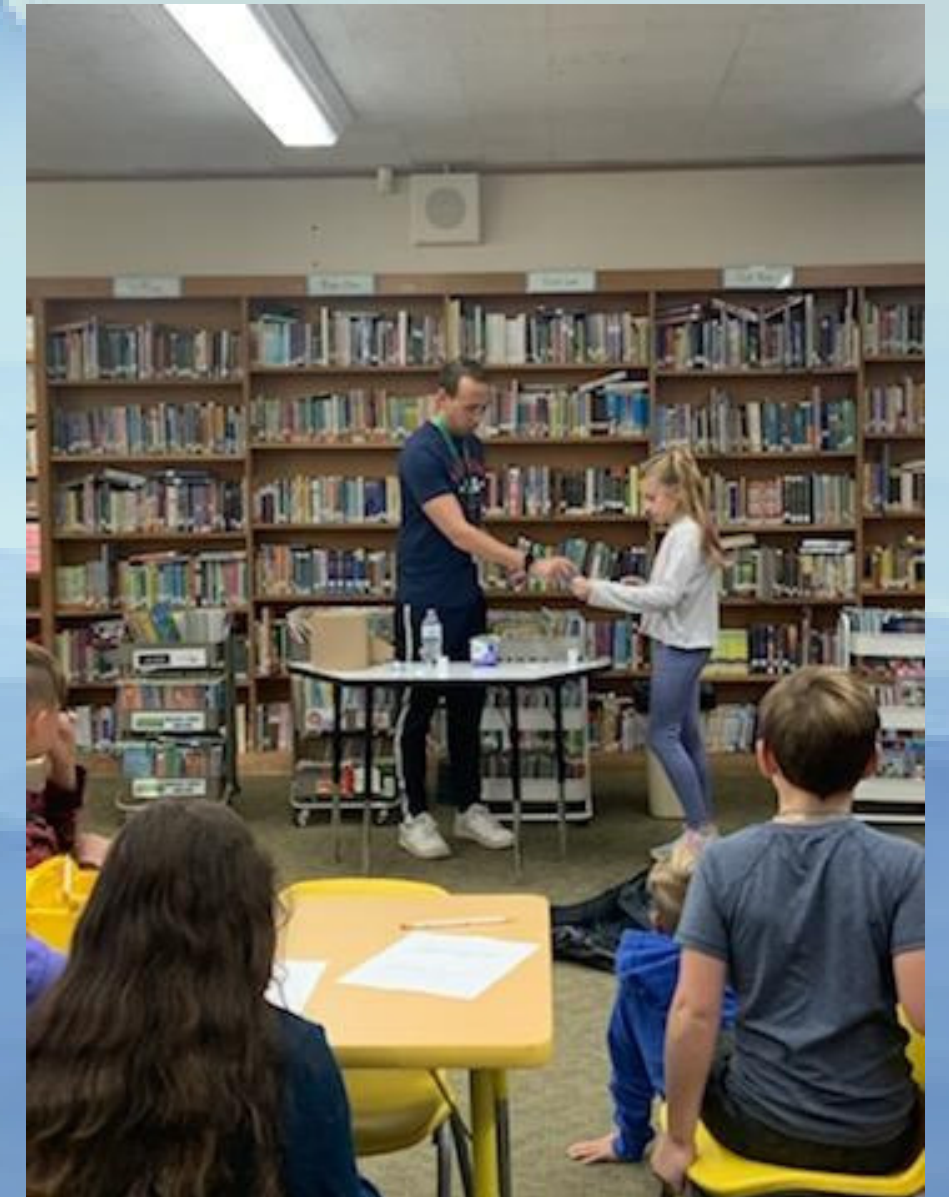
Science, Technology, Engineering, Arts, and Math spark curiosity, learning, and inquiry-based thinking. Using exciting new tools like Sphero, Cubelets, and BeeBots, students explore real-world applications, develop problem solving skills, and become critical and independent thinkers.

Questions? Please contact Mrs. Emmerich or Mr. Burke.

L

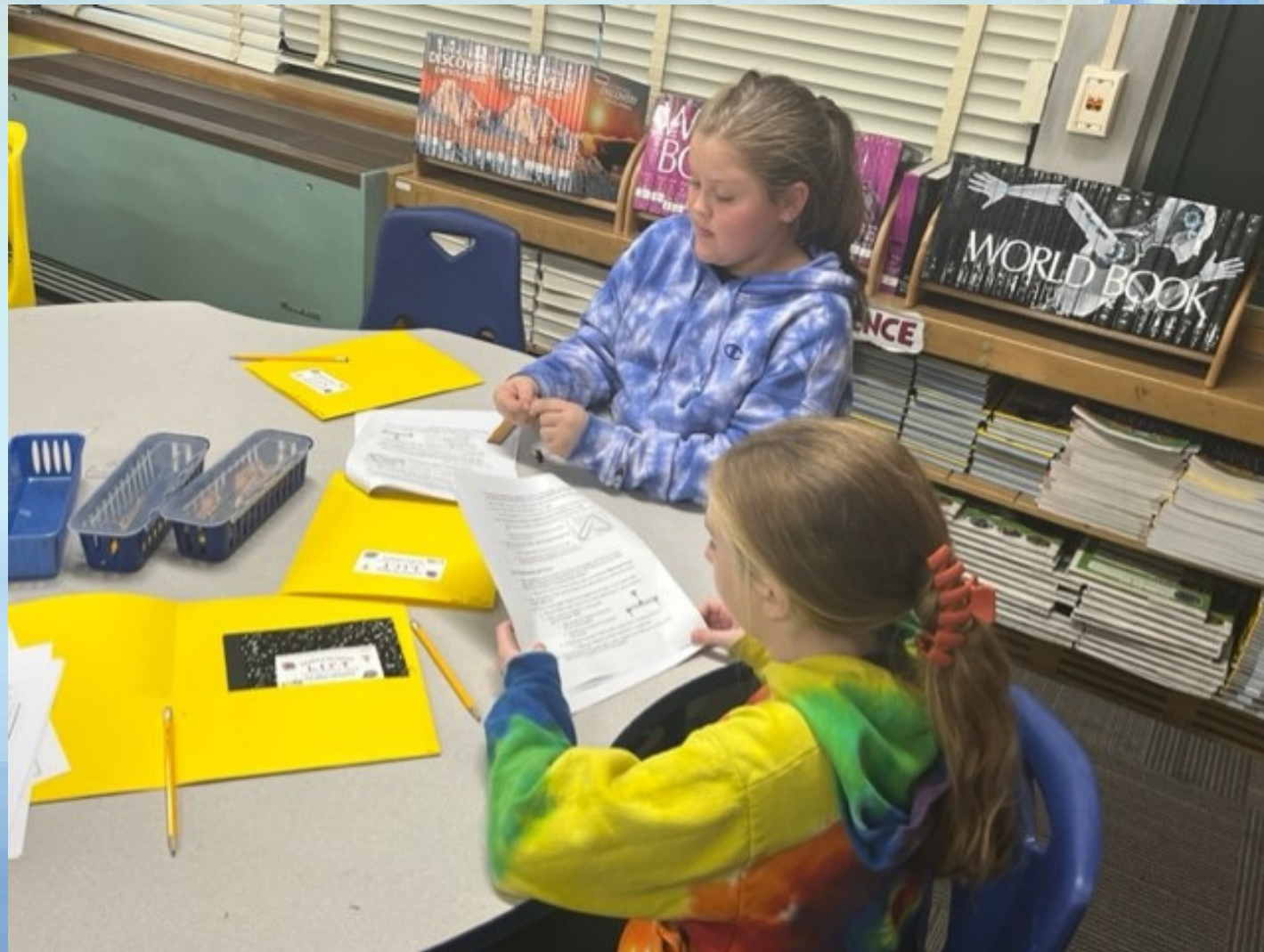
LIBRARY & RESEARCH

Find books, conduct research, and have fun! The library is the school's center for active and engaged learning. Here, we cultivate digital citizens, skillful researchers, critical thinkers, makers, and enthusiastic readers.



INNOVATION // PROJECT LEAD THE WAY

Young learners are naturally wired for discovery. You've seen it. Discovery is what makes them tick. PLTW taps into students' exploratory nature, engages them in learning that feels like play, and encourages them to keep discovering – now and for whatever future they choose.





FIT MINDS & BODIES

Move your body, grow your brain. Students will discover the interconnectedness of healthy mind and movement through hands-on activities that nurture inquiry, mindfulness, growth, and healthy living.



T

TECHNOLOGY & STEAM CHALLENGES

Science, Technology, Engineering, Arts, and Math spark curiosity, learning, and inquiry-based thinking. Using exciting new tools like Sphero, Cubelets, and BeeBots, students explore real-world applications, develop problem solving skills, and become critical and independent thinkers.



