

March 25, 2020



# Curriculum and Program Enhancements/Tax Levy 2020 - 2021 Budget

Presenters: Dr. Adele V. Pecora, John A. Striffolino, Marie Donnelly  
and Mary Catherine Culella-Sun



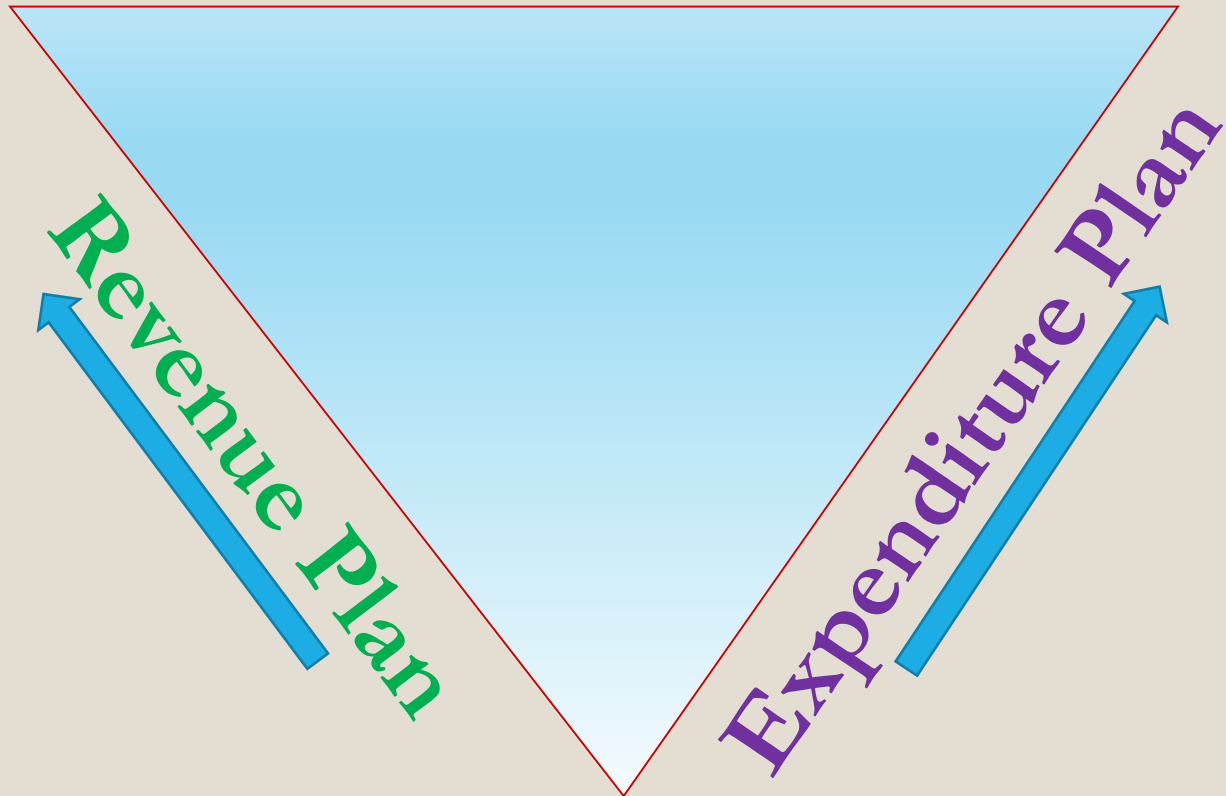
# Board of Education Goal

To create a fiscally responsible and operationally efficient budget that maintains and enhances the integrity of all programs.





# Educational Plan





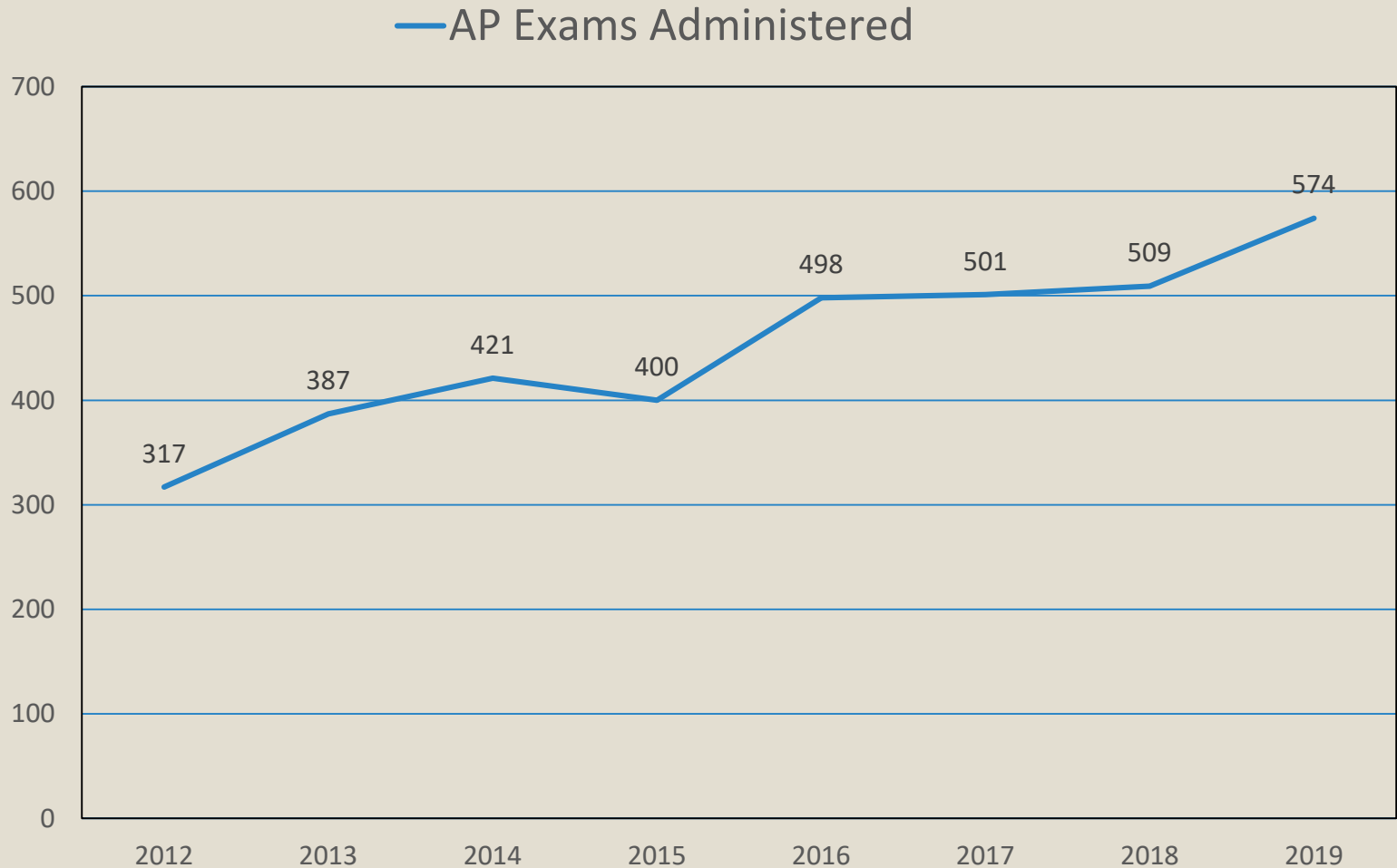
# Evidence of Success

The Seaford School District continues to focus on higher levels of achievement through enhancing educational programs and providing for greater opportunities for our students to be successful.

- Increased enrollment in College Level/AP Courses
- Consistently high Graduation Rate
- NYSED designates Seaford High School as a School of Recognition



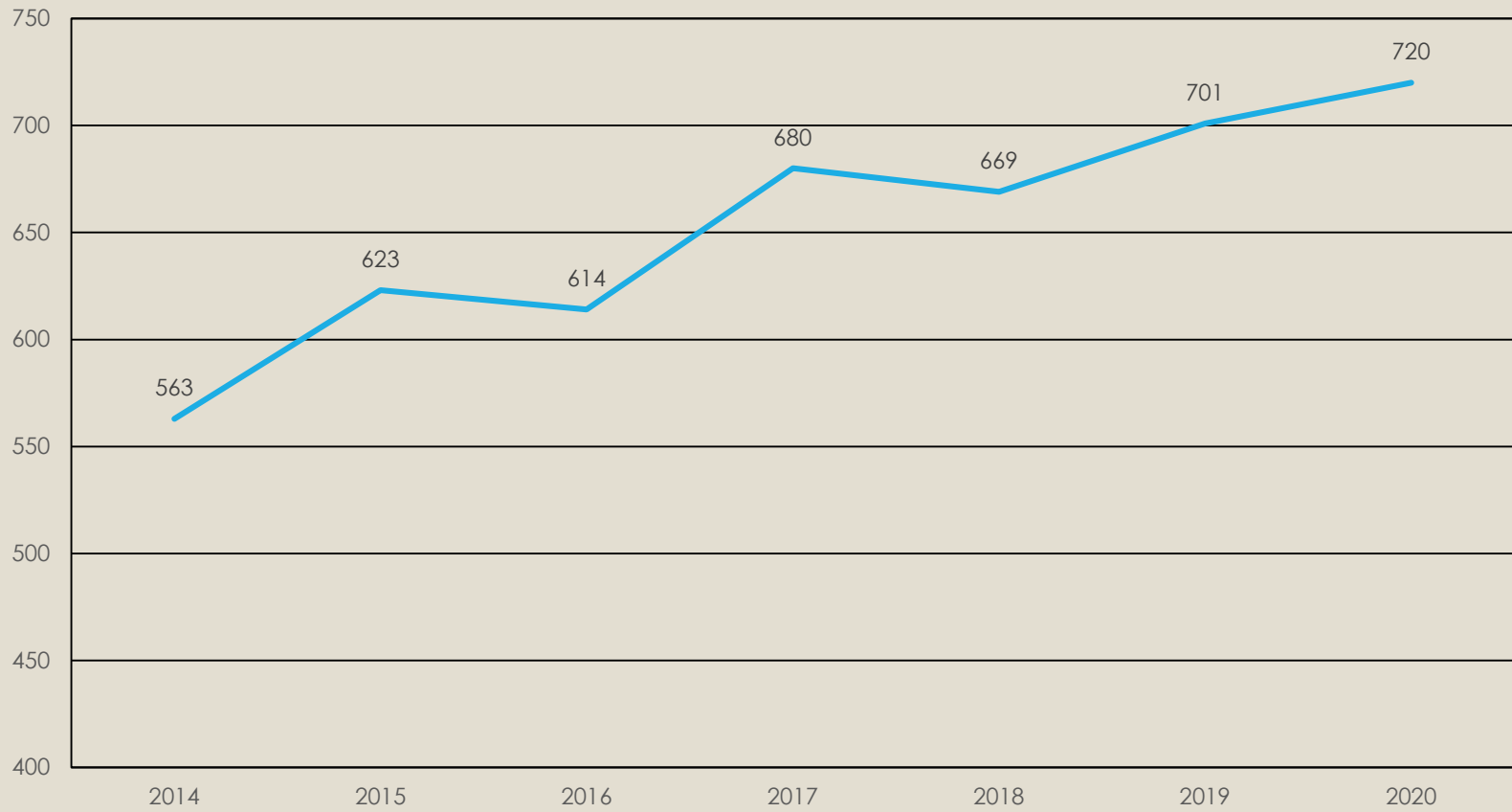
# AP Exams Administered 2019





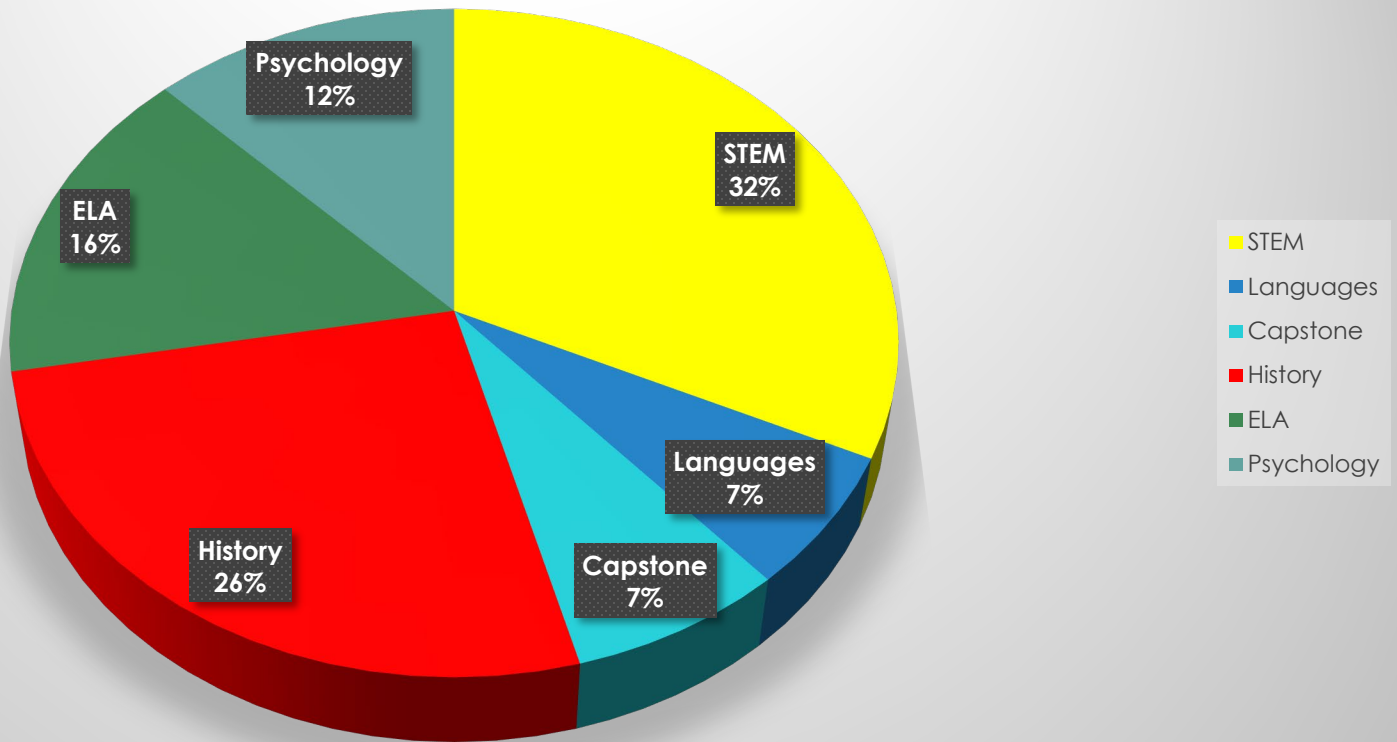
# Enrollment in AP and College Level Courses 2019-2020

Number Enrolled in College Level Courses





# DISTRIBUTION OF COLLEGE LEVEL COURSES BY SUBJECT



\*This is the breakdown of the 720 'seats' for students enrolled in college level coursework



# High Graduation Rate

Year	# of Graduates	Graduation Rate*
2014	191	91.83%
2015	182	92.86%
2016	169	94.94%
2017	176	96.17%
2018	177	97.70%
2019	158	95.80%



\* August graduates are included







# Students Continuing their Education

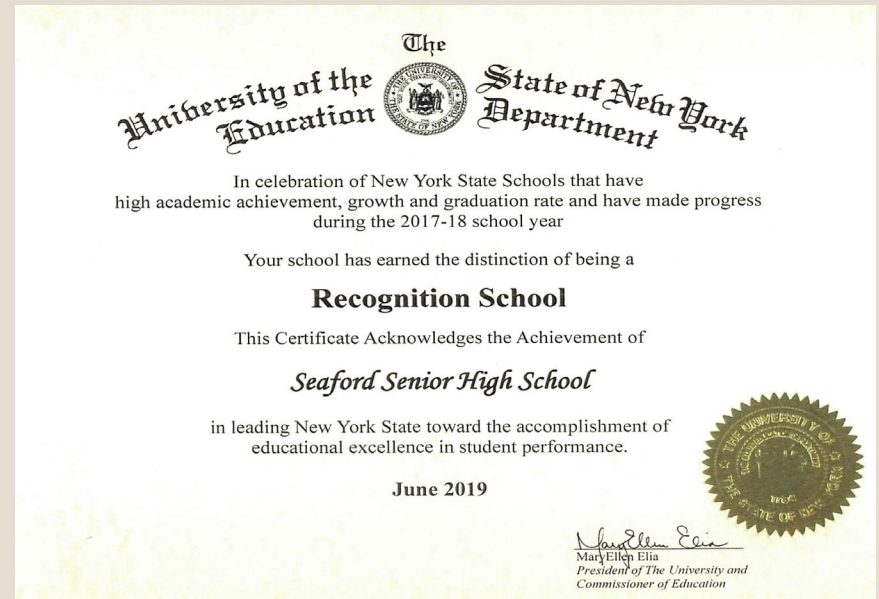
<b>Graduation Year</b>	<b>2 Year College</b>	<b>4 Year College</b>
2014	26%	67%
2015	31%	59%
2016	23%	69%
2017	24%	71%
2018	19%	72%
2019	24%	65%



# Recognition School

Under New York's Every Student Succeeds Act (ESSA) Plan, 2018-19 Recognition Schools have high academic achievement, student growth and graduation rate, and have made progress during the 2017-18 school year.

There were 562 NY schools designated as Recognition Schools for High Achievement and High Progress. This is out of over 4,400 schools in about 900 districts statewide. On Long Island, SHS was one of 67 chosen from 650 schools in 125 districts.





# District-Wide Initiatives

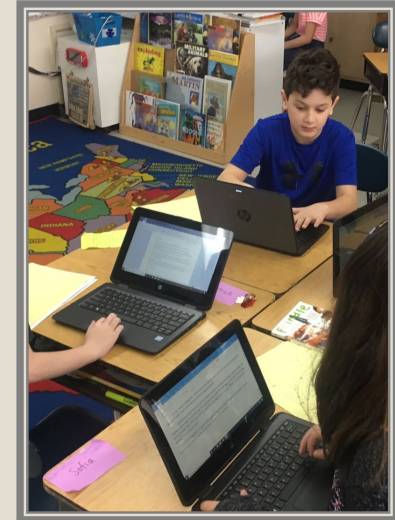




# Personalized Digital Learning

**The 2020 - 2021 budget includes additional devices:**

- 100% of middle school students will have a HP device
- 100% of high school students will have a HP device
- 100% of students in grades 3, 4 & 5 will have personal HP devices in their classrooms
- Additional iPad grade level carts are available for K - 2





# Project Lead the Way: Launch

PLTW Launch empowers students to adopt a design-thinking mindset through hands-on activities. Students will explore areas in computer science, engineering, and biomedical science, becoming creative and collaborative problem solvers.

## Modules Covered in 2019 - 2020

Human Body  
Grids and Games  
Stability and Motion: Flight

## Considered Modules for 2020 - 2021

Light and Sound  
Variation of Traits  
Infection: Modeling and  
Simulation





# Habits of Mind: Expanding



The Habits of Mind are an identified set of 16 problem solving, life related skills, necessary to effectively operate in society.

Ongoing work will include:

- Elementary schools applying to be an *International Habits of Mind Community of Excellence*
- Middle school students creating videos regarding each of the *Habits* to be telecasted via MSTV to the entire school
- Photo classes at the high school will be creating posters depicting each of the *Habits* and when will be exhibited throughout the high school and middle school
- Announcements acknowledging student use of the *Habits*



# Northwell – Mental Health Services

Comprehensive mental health service access and care coordination to include:

On-site psychiatric evaluations by a child and adolescent psychiatrist

Referral to care and outside mental health resources and services

Coordination of care needed beyond the school setting facilitated by a psychiatric social worker in conjunction with South Oaks Hospital

Clinical case conferencing and management with school staff

Specialized professional staff development on related mental health topics in schools

When needed, professional and discreet ambulance transport



# Other District-wide Initiatives

- Professional Development
- Social Emotional Programming
- Updating Classroom Furniture
- NWEA – Measures of Academic Progress



# Seaford High School





# Seaford High School Enhancements 2020 – 2021 Budget

Habits of Mind

PDL

Northwell Mental  
Health Services

NWEA –  
Measures of  
Academic  
Progress

Social Emotional  
Programming

Updating  
Classroom  
Furniture

Professional  
Development

Enhancing Lions  
Quest

Diverse  
AP and College  
Coursework

Wellness Center

ENVES  
(AP Env. Sci and  
Regents Earth  
Science)

Aligning STEM  
Sequences

New Courses

Advancement in  
Science Research



# Clubs and Activities

Performance	The Arts	Academic	Social Awareness
Dance Drama Production Jazz Band Marching Band Pep Band Tri-M Music Vocal Ensemble	Art Honor Society Digital Film Lighting Crew Mural Radio Renaissance Viking Voice Yearbook	Books and Bagels Class Officer Computer Mathletes Mock Trial Model Congress National Honor Society Robotics Science World Culture	Best Buddies Freshman Buddies Gay Straight Alliance Green Team Key S.A.D.D. Student Council  *Athletic Leadership

\*New for the 2020 – 2021 School Year



# Athletics



Fall	Winter	Spring
Cheerleading	Basketball	Baseball
Cross Country	Bowling	Lacrosse
Football	Cheerleading	Softball
Soccer	Track and Field	Track and Field
Volleyball	Wrestling	





# Seaford Middle School



# Seaford Middle School Enhancements 2020 – 2021 Budget

Habits of Mind

PDL

Northwell Mental  
Health Services

Project Lead the  
Way

Social Emotional  
Programming

Updating  
Classroom  
Furniture

Professional  
Development

NWEA –  
Measures of  
Academic  
Progress

**Wellness Center**

**Align Science  
Program to new  
standards**

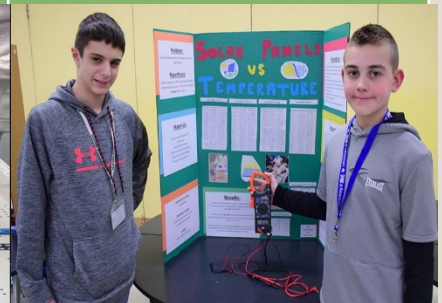
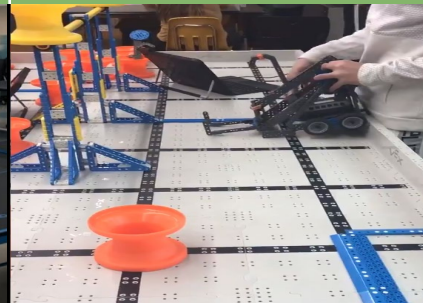
**Teachers College  
Writing Units**

**New Exploratory  
Courses**



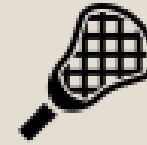
# Clubs and Activities

Performance	Arts and Recreation	Academic	Social Awareness
Drama	Art	ASL	Diversity
Jazz Band	Table Tennis	Junior National Honor Society	PACC
Woodwind	Yearbook	Robotics	S.A.D.D.
		Science Olympiad	Service
			Student Council





# Athletics



## Fall

Field Hockey, Cheerleading, Football, Boys and Girls Soccer



## Winter I

Boys Basketball 7<sup>th</sup> Grade\*, Boys Basketball 8<sup>th</sup> Grade, Cheerleading, Volleyball 7<sup>th</sup> Grade\*, Volleyball 8<sup>th</sup> Grade



## Winter II

Girls Basketball 7<sup>th</sup> Grade\* , Girls Basketball 8<sup>th</sup> Grade, Wrestling



## Spring

Baseball 7<sup>th</sup> Grade\*, Baseball 8<sup>th</sup> Grade, Lacrosse, Softball, Boys and Girls Track



\* Maintaining 7<sup>th</sup> Grade sports teams for a second year







# Harbor and Manor Schools



# Harbor and Manor Enhancements 2020 – 2021 Budget

Habits of Mind

PDL

Northwell Mental  
Health Services

Project Lead the  
Way

Social Emotional  
Programming

Updating  
Classroom  
Furniture

Professional  
Development

NWEA –  
Measures of  
Academic  
Progress

Teachers College  
Project Schools

Math Olympiads

Coding and  
Keyboarding

Maintaining  
Class Size



# Clubs & Activities



Harbor	Manor
Book	Book
Chess	Chess
Jazz Band	Computer
Math Club	Jazz
Science – 4 <sup>th</sup> Grade	Maker Space
Science – 5 <sup>th</sup> Grade	Physical Education – 4 <sup>th</sup> Grade
Student Council	Physical Education – 5 <sup>th</sup> Grade
Technology	Student Council





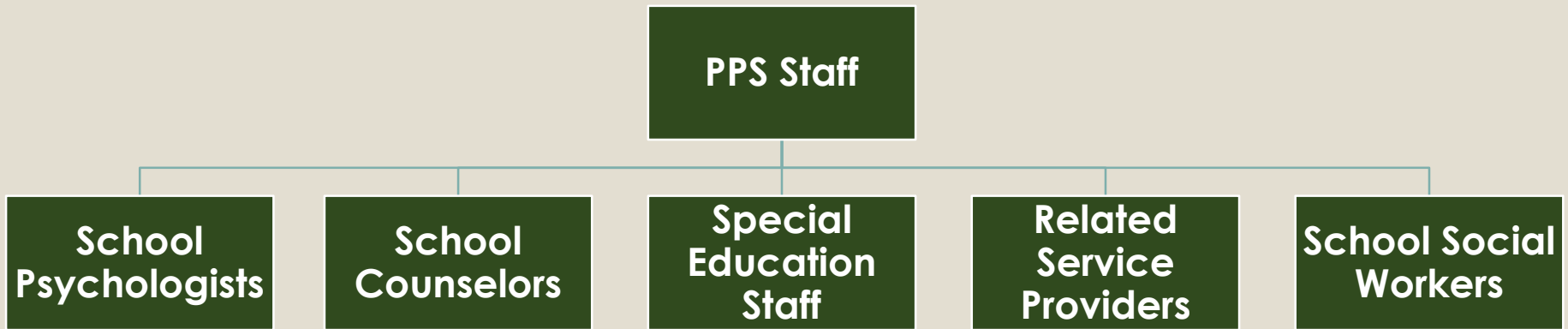
# **Pupil Personnel Services (PPS) at Seaford**

**PPS staff provide educational, counseling, and therapeutic services to meet the needs of all students and support the educational programs within the District.**

**Our mission is to utilize strategies, techniques, and resources to maximize student growth and potential in achieving their academic, social-emotional, and post-secondary goals.**



# Who Are We?





# Robust Continuum of Services

**General Education Build Level Supports K-12**

**Declassification Supports**

**Related Services**

**Consultant Teacher**

**Combination Consultant Teacher/Resource Room**

**Resource Room (5:1)**

**Integrated Co-Teaching (Collaborative)**

**Special Class (e.g. 12:1:1; 15:1)**

**Out of District Placement (NYS Approved Day and Residential; home; hospital)**



# Special Education Enhancements 2020 – 2021 Budget

**Enhancements  
to Integrated  
Co-teaching  
Delivery Model**

**Northwell Health  
Mental Health  
Services**

**CDP II Program  
Vocational  
Enhancements**

**Specialized and  
Targeted  
Professional  
Development**

**District-Hired  
Related Service  
Providers**

**Adaptive  
Equipment,  
Flexible Seating  
and Desks  
Increasing  
Student Access**



# Funding for the 2020-2021 Budget







# Budget Considerations & Constraints

Enhance opportunities for our students while remaining within the tax cap levy limit.

Budget for facility enhancements through reserves

Generate revenue by spending through BOCES.

Continue to improve the District's financial condition and maintain transparency.



# Budget Enhancements 2020-2021

Expanding College  
Course  
Opportunities

Expanding  
Teachers College  
Writing to the  
Middle School

Continuing the  
Personalized  
Digital Learning  
Initiative

Enhancing  
Science Program  
K-12

Enhancements to  
Special Education  
& PPS Program

Project Lead the  
Way

NWEA  
Assessment

Security  
Enhancements

Northwell Mental  
Health Services

Elementary  
Enrichment  
Program

Additional  
Professional  
Development

Ceiling  
Replacement at  
Harbor



# Tax Levy History

<b>School Year</b>	<b>Maximum Allowable Tax Levy %</b>	<b>Seaford UFSD Tax Levy %</b>
2014-15	1.55%	1.55%
2015-16	2.28%	2.28%
2016-17	1.16%	1.16%
2017-18	2.02%	2.02%
2018-19	2.69%	2.69%
2019-20	4.04%	2.98%
2020-21 <i>proposed</i>	3.58%	3.58%



# Budget to Budget Comparison

	<b>Budget % Increase</b>	<b>Tax Levy % Increase</b>
<b>2019-2020</b>	<b>3.18%</b>	<b>2.98%</b>
<b>2020-2021</b>	<b>3.11%</b>	<b>3.58%</b>



## Proposed Budget Spending Plan 2020-2021

	2019-2020	2020-2021	Change
Total Proposed Budget	\$70,656,949	\$72,851,591	\$2,194,642
Budget to Budget Increase		3.11%	
Tax Levy Increase		3.58%	



# Questions?

