

2024 CCSD COMMUNITY SERVICES FAIR RESOURCES



**Note these resources are for informational purposes only
and organizations are not endorsed by
The Cherokee County School District**



TABLE OF CONTENTS

Day Programs & Resources	Slides 3-9
Employment Resources	Slides 10-22
General Community Resources	Slides 23-42
Post-Secondary Schools	Slides 43-50
Recreation and Leisure Resources	Slides 51-64

An abstract geometric design on the left side of the slide. It features a dark blue background with various geometric shapes and patterns. A white circle is positioned near the top left. Below it, a light blue semi-circle is visible. To the right of the semi-circle, there is a pink triangle with diagonal lines. Further down, there is a pink square with a pattern of concentric lines. At the bottom, there are several triangles in shades of pink and blue, some with diagonal lines. A white line runs diagonally from the top left towards the bottom right, separating the abstract design from the text area.

DAY PROGRAM AND RESOURCES

ANNANDALE VILLAGE



Annandale
VILLAGE

<https://annandale.org/>

BEYOND BOUNDARIES ADULT EMPOWERMENT CENTER



[Beyond Boundaries AEC Flyer.png](#)

[Business Card](#)

[Flyer](#)



EMPOWER CHEROKEE



<https://www.empowercherokee.org/>

LIMITLESS DISABILITY SERVICES



<https://limitlessdisabilityservices.com/>

Limitless Information

NEXT STEP MINISTRIES



<https://www.nextstepministries.net/>

[Next Step Ministries Brochure](#)

[Next Step Ministries Resource Guide](#)



WE ARE FIRST

Adult day services for adults with intellectual
disabilities

Katavia Childs

Owner

WE ARE FIRST LLC

6941 Highway 92 Suite 120

Woodstock GA 30189

ph: 678-608-6032

weareone888@gmail.com



EMPLOYMENT RESOURCES

CIRCLE OF FRIENDS



Circle of Friends

<https://www.circleoffriendsinc.org/>



BRIGGS & ASSOCIATES

BRIGGS
& ASSOCIATES | *Celebrating*
30⁺
YEARS

<https://www.briggsassociates.org/wordpress/>

[Brochure](#)

DISABILITY LINK



dis**ABILITY**
LINK
the center for rights & resources

<https://disabilitylink.org/>

[Brochure](#)

GEORGIA CTI



Career & Technical Instruction

<https://georgiacti.org/>

GROW – Pre Ets Program

June 17-21 9 AM – 2 PM

Cherokee High School

[Information](#)



GREAT PROSPECTS

<https://www.greatprospectsinc.org>

Great Prospects, Inc. is a community-based program that fits the updated guidelines the DBHDD has set for providing care for individuals with disabilities.

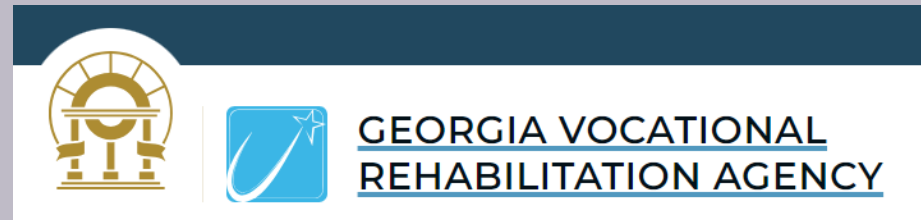
GOODWILL OF NORTH GEORGIA

Goodwill
of North Georgia



<https://goodwillng.org/>

GEORGIA VOCATIONAL REHABILITATION AGENCY (GVRA)



Georgia Vocational Rehabilitation Agency (GVRA)'s core mission is to help people with disabilities find and maintain employment. As every individual is different, so too are the services our Vocational Rehabilitation (VR) program offers.

<https://gvs.georgia.gov/>

HUNTER RODGERS



[Website](#)

Contact: Ernell Thacker
ERThacker@hunterrodgers.com

GROW - Pre Ets Program
June 10-14, 9 AM - 2 PM
Cherokee High School

[Information](#)

KEN'S KREW, INC.



<https://kenskrew.org/>

[Information](#)



ROOSEVELT WARM SPRINGS AND GVRA

<https://gvs.georgia.gov/transition-school-work/roosevelt-warm-springs>

Pathway Options:

Download this pdf file. [Hospitality](#)

Download this pdf file. [Auto Detailing](#)

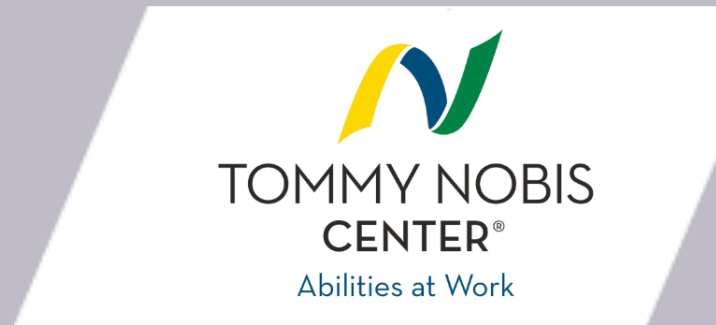
Download this pdf file. [Logistic - Forklift & Warehouse](#)

Download this pdf file. [CVS/Retail](#)

Download this pdf file. [Low Voltage Wiring](#)

Download this pdf file. [Certified Nursing Assistant](#)

TOMMY NOBIS CENTER



<https://tommynobiscenter.org/>

WORKPLACE LEARNING SOLUTIONS



<https://wlstraininginc.com/>
[Information](#)

An abstract geometric design on the left side of the slide. It features a dark blue background with various geometric shapes and patterns. A white circle is positioned near the top left. Below it, a light blue semi-circle is visible. To the right of the semi-circle, there are concentric circles. Further down, there are several parallel lines forming a series of nested rectangles. The design is composed of various shades of blue, purple, and pink, creating a modern and artistic look.

GENERAL COMMUNITY RESOURCES

BABIES CAN'T WAIT/CHILDREN'S MEDICAL SERVICES PROGRAMS/DBHDD



[DBHDD BCW Website](#)

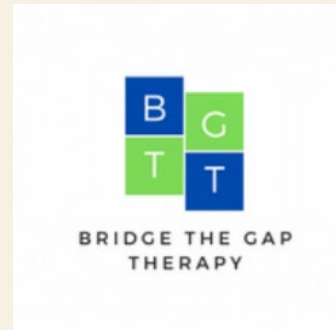
[BCW Early Interventions 0-36 Months - English](#)

[BCW Early Interventions 0-36 Months - Spanish](#)

[BCW Brochure - Transition at Age 3 English](#)

[BCW Brochure - Transition at Age 3 Spanish](#)

BRIDGE THE GAP THERAPY



www.bridgethegaptherapyga.com

[Bridge The Gap Therapy Information](#)

CARESTAR OF GEORGIA



<https://www.carestar.com/>

[Information](#)

CHEROKEE COUNTY SCHOOL DISTRICT PARENT MENTOR



- [Website](#)
- [Parent Mentor Brochure English](#)
- [Parent Mentor Brochure Spanish](#)

- **Parent Mentor:**

JoEllen.Hancock@cherokeek12.net
770.721.8503 -or- 678.310.6198

CHEROKEE COUNTY PROBATE COURT



<https://www.cherokeega.com/Probate-Court/>

[What to Expect Guardianship and Conservatorship](#)

[Cherokee County Probate Court Guardianship and Conservatorship](#)

[Guardianship and Conservatorship Glossary of Terms](#)

DBHDD – NOW AND COMP WAIVER INFORMATION

[Apply to New Option Waiver Program \(NOW\) and
Comprehensive Support Waiver Program \(COMP\) |
Georgia.gov](#)

[Apply for Medicaid | Georgia.gov](#)

[NOW and COMP Waiver Info.](#)



EMORY AUTISM CENTER TRANSITION RESOURCES



[Website](#)

[Parent Transition Series](#)

EPIC HOME CARE SERVICES



Website:

<https://www.epichomecarega.com/>

GEORGIA CENTER FOR RESOURCES AND SUPPORT



The resource hub for
adoptive and guardian families
in the state of Georgia.

- <https://gacrs.org/>
- [Information](#)

GEORGIA LIBRARY SERVICES FOR THE BLIND & PRINT DISABLED



<https://georgialibraries.org/>

[Information](#)

[Video](#)

HIGHLAND RIVERS



<https://highlandrivers.org/>

PARENT TO PARENT OF GEORGIA

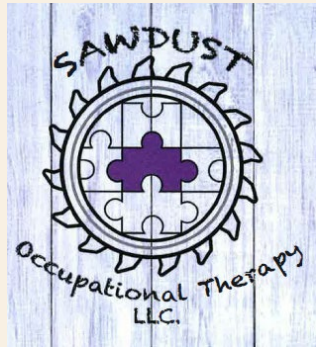


<https://www.p2pga.org/>

[Brochure English](#)

[Brochure Spanish](#)

SAWDUST OCCUPATIONAL THERAPY, LLC



<https://www.sawdustot.com/>

[Brochure](#)

SEQUOYAH REGIONAL LIBRARY



<https://www.sequoyahregionallibrary.org/>

SOCIAL SECURITY ADMINISTRATION



Social Security

[Website](#)

SPECIAL NEEDS COBB



<https://www.specialneedscobb.org/>

THERABEAT MUSIC



<https://www.therabeat.com/>

[Music Therapy Fact Sheet](#)

[Music and the Brain](#)

[June 10-15 Summer Camp Information](#)

[June 24-28 Summer Camp Information](#)

[July 15-19 Summer Camp Information](#)

TOGETHER WE CARE

<https://www.togetherwecarega.org/>

[Parent Roadmap](#)

WOODSTOCK LIONS CLUB AND GEORGIA LIONS LIGHTHOUSE FOUNDATION



<https://lionslighthouse.org/>

[Information on Transforming Vision Care in Georgia](#)



POST SECONDARY SCHOOLS

CHATTAHOOCHEE TECHNICAL COLLEGE



Disability Office

[Website](#)

[Contact Information](#)

[Basic steps to enroll in DSS](#)

[Differences between HS and College](#)

[DSS Documentation Requirements](#)

Office of Admissions

[Website](#)

[Dual Enrollment](#)

[LINK program to KSU](#)

[Flyer](#)

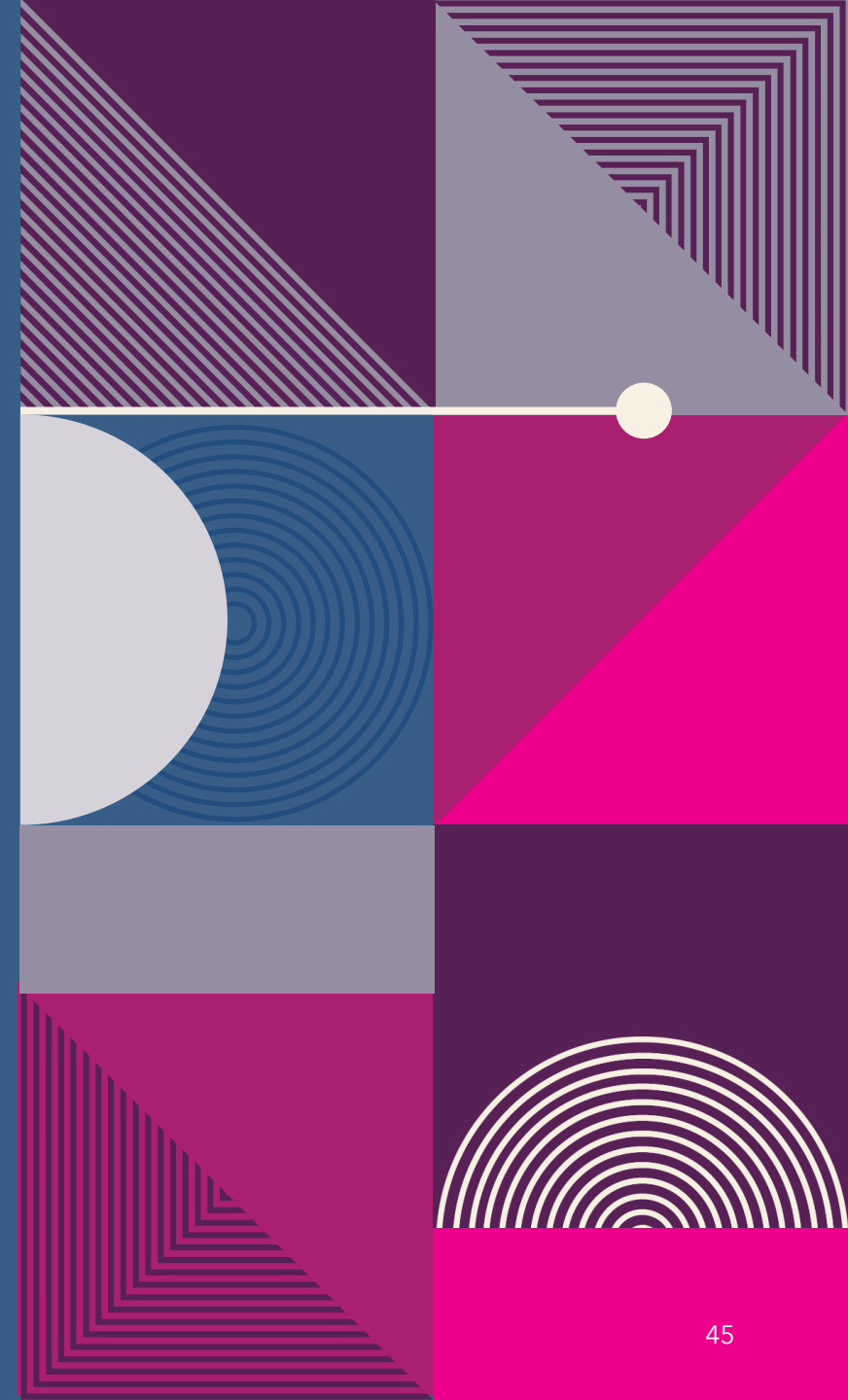
[Guaranteed transfer credits to USG Schools](#)

EXCEL AT GEORGIA TECH



<https://excel.gatech.edu/home>

Brochure



GEORGIA HIGHLANDS COLLEGE



<https://www.highlands.edu/>

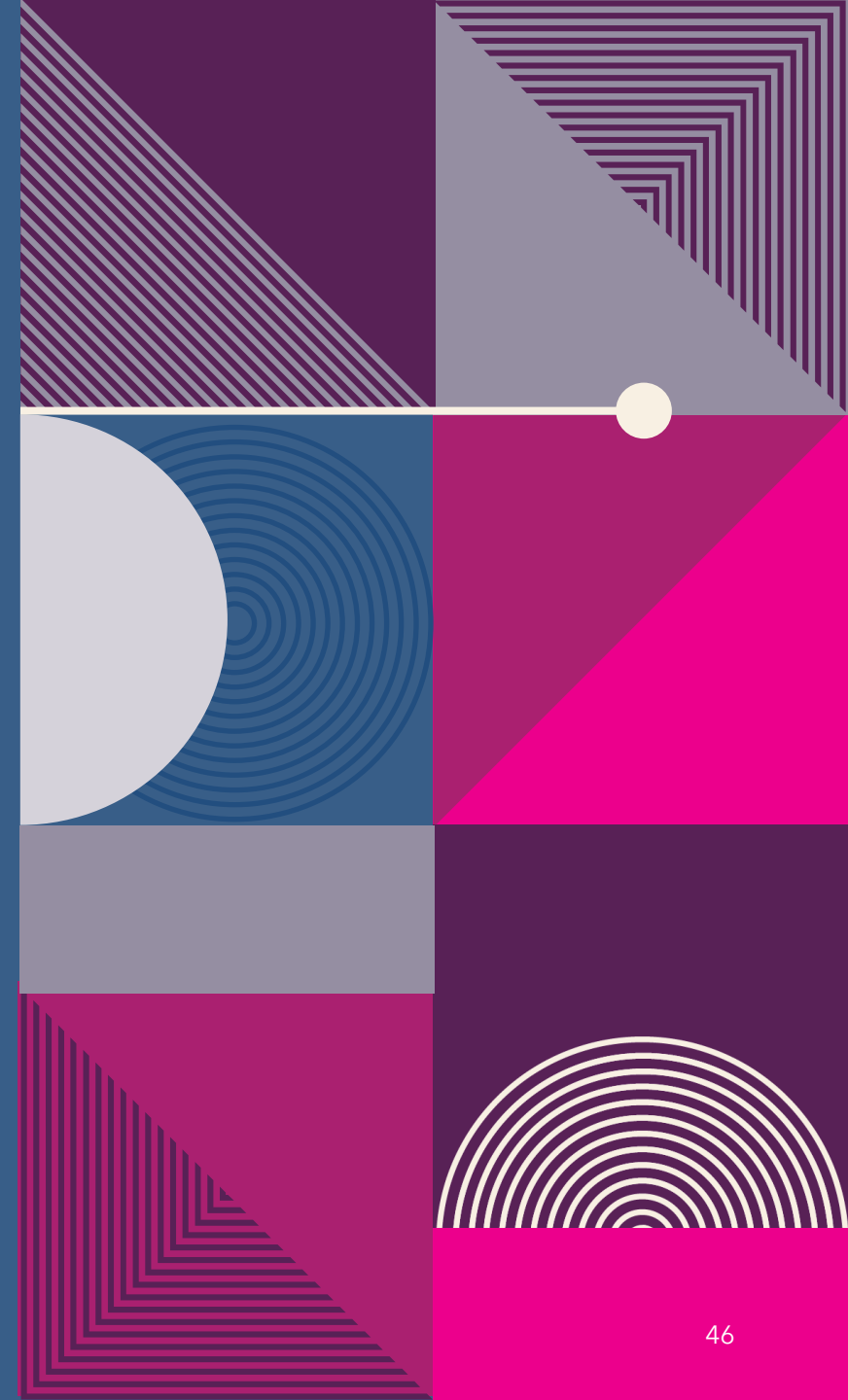
Disability Office

Contact Information

General Information

Information

Admissions

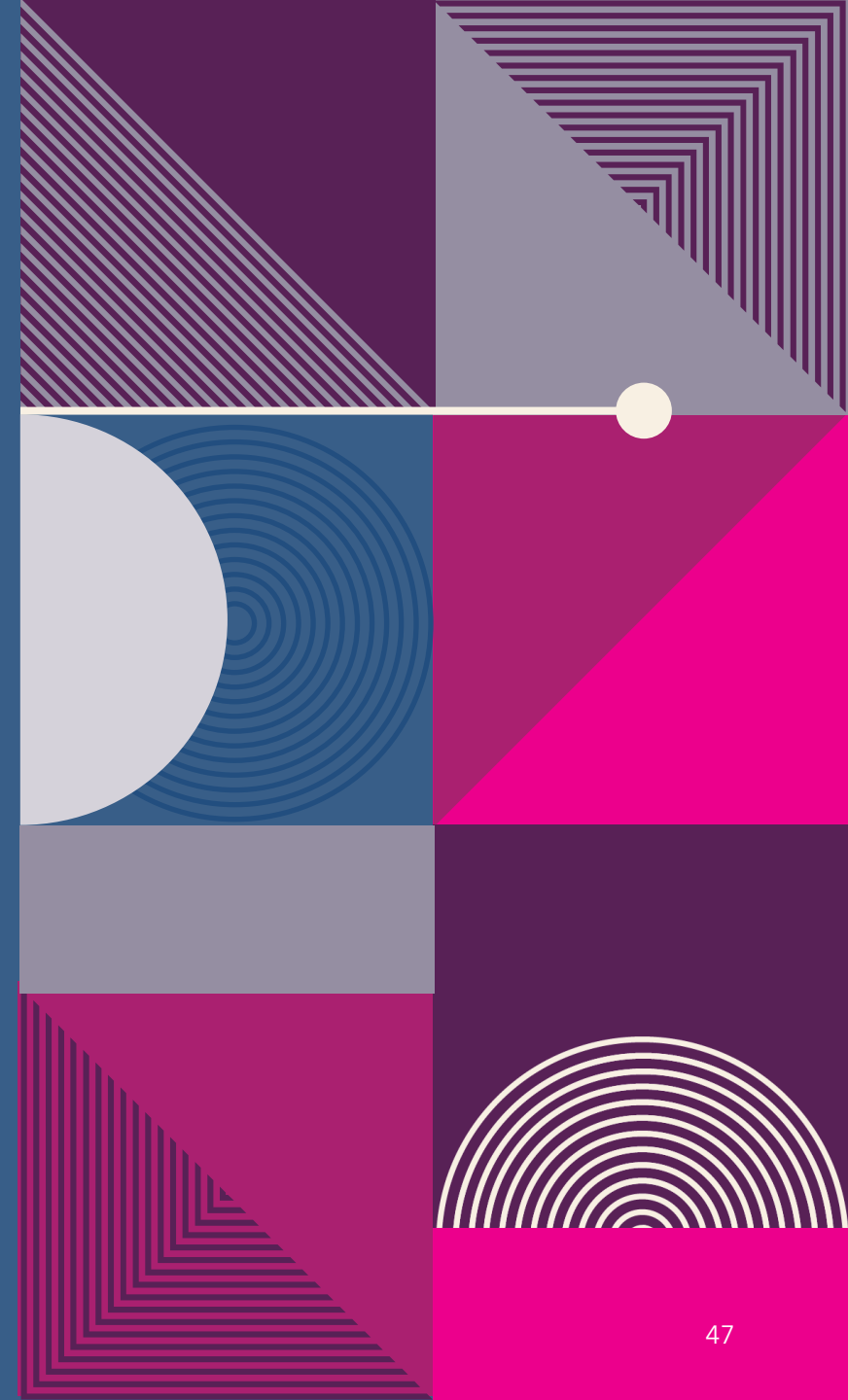


GEORGIA INCLUSIVE POST SECONDARY EDUCATION CONSORTIUM



<https://gaipsec.org/>

Information



KENNESAW STATE UNIVERSITY



KENNESAW STATE
UNIVERSITY

<https://www.kennesaw.edu/>

[Student Disability Services](#)

[HS vs. College](#)

[Information](#)

[Additional Information](#)

[Admissions](#)

[Planning for College while in HS](#)

REINHARDT UNIVERSITY



<https://www.reinhardt.edu/>

[Academic Support Office \(Disability Services\)](#)

[Admissions](#)

SHEPHERDS COLLEGE



<https://shepherdscollege.edu/>

[Admissions](#)

[Information](#)



RECREATION AND LEISURE RESOURCES

AUTISM IMPROVISED



<https://www.autismimprovised.org/>

Bright Paths
CODE Breakers
Shenanigans Improv

AUTISM ON THE SEAS



<https://autismontheseas.com/>

[Information](#)

ANGELS ON HORSEBACK



ANGELS ON HORSEBACK

<https://angelsonhorseback.org/>

Information



CENTER FOR PUPPETRY ARTS

CENTER
FOR PUPPETRY *Arts*

<https://puppet.org/>

Accessible Events:

<https://puppet.org/visit/puppets-for-all/>

CHEROKEE COUNTY SPECIAL OLYMPICS



<https://cherokeesos.com/>

DUET DANCE ACADEMY



<https://www.duetdancega.com/>

ABOUTACTD

Information

ERIN'S HOPE FOR FRIENDS



<https://www.erinshopeforfriends.org/>

[Brochure](#)

[e's Club](#)



GEORGIA BALLET



<https://www.georgiaballet.org/>

[Danceability](#)



SPECIAL POPS TENNIS

<https://www.specialpopstennis.org/>

SPEED FOR NEED

[SPEEDFORNEED.ORG](https://speedforneed.org)

[BROCHURE](#)

Who Pushes Who?

[HTTPS://SPEEDFORNEED.ORG](https://speedforneed.org)

Mission

The mission of Speed for Need is to raise awareness and foster inclusion of those with a special need through participation in fitness events supported by the men of F3 Nation.

We push Track Commanders (riders with a special need) in customized racing wheelchairs to help them participate in and complete fitness events such as 5Ks, 10Ks, or marathons – experiences that they would not be able to have on their own.

SPEED FOR
NEED



ALWAYS FREE

Participation in Speed for Need events are always free of charge to Track Commanders

OPEN TO ALL

Participation is available to all those unable to complete a race on their own accord, regardless of their special need

2024 NORTH GEORGIA RACE SCHEDULE

Race	Date	Time	City
Noonday Shanty 5k	3/23	7:45am	Kennesaw
Limitless 5K Run, Stroll, Roll	4/13	8:00am	Canton
Cherokee FCA 5K	4/13	8:00am	Woodstock
Run with a Longhorn 5k	4/27	8:00am	Marietta
Bub's Run 5k	5/4	7:30am	Kennesaw
Fit City 5k	5/11	8:00am	Kennesaw
Summer Sun Run 5k	6/8	8:00am	Kennesaw
BEATS Gallop and Go 5k	8/3	8:00am	Canton
Chick fil A Cherokee 5k	8/17	8:00am	Canton
Harvest Hustle 5k	9/28	8:00am	Kennesaw
Run Walk Roll 5k: Next Step Ministries	10/5	8:00am	Woodstock
The Smile Run 5k	10/19	8:00am	Canton
Nightmare on Main St. 5k	10/26	8:00am	Kennesaw
Holiday Lights 5k	11/16	6:00pm	Canton

SIX FLAGS OVER GEORGIA



<https://www.sixflags.com/overgeorgia>

Accessibility

SOUTHERN MUSEUM



Website

Information



THRIVE SPECIAL NEEDS MINISTRY

Thrive | First Baptist Church Woodstock

Information

An abstract geometric design on the left side of the slide. It features a dark blue background with various geometric shapes and patterns. A white circle is positioned near the top left. Below it, a light blue semi-circle is visible. To the right of the semi-circle, there is a pink triangle with diagonal lines. Further down, there is a pink square with a pattern of concentric lines. At the bottom, there is a pink triangle with a pattern of concentric lines. The overall design is modern and minimalist.

THANK YOU