



Burlingame High School

Building a Connected Community Since

2023-24 SCHOOL PROFILE

CEEB Code 050410

THE PANTHER PROMISE

Our Mission: Burlingame High School will develop in all students the skills, knowledge, and mindset that will prepare them to meet the challenges of college, the demands of career, and the responsibilities of community membership.

ABOUT US

Burlingame High School (BHS) is a comprehensive four-year public high school located 15 miles south of San Francisco. The suburban setting of Burlingame is home to 30,000 residents. BHS is one of seven high schools in the San Mateo Union High School District (SMUHSD) and enjoys close ties with and receives tremendous support from the city and community of Burlingame. SMUHSD is a district with open enrollment, and BHS students come from the entire district boundary area. Approximately 1,500 students attend the school and there are 80 credentialed personnel to support their learning (83 with counselors included).

OUR STUDENTS

Students at Burlingame High School are dedicated to improving their school and larger community through participation in numerous programs such as school culture initiatives, athletics, clubs, service learning, and volunteerism. We offer a broad curriculum to support students as they explore their academic, personal, and career goals. Our school gives students the opportunity to investigate their passions through various coordinated opportunities in job shadowing, peer tutoring, and concurrent enrollment at local community colleges as well as dual enrollment courses taught on our campus in collaboration with local colleges. Additionally, we house an Adult Transition Program (ATC) for 18-22 year-old students continuing to receive services through Special Education.

AB 104

California Legislation (AB 104), enabled students to request to have any '20/21 school year letter grades changed to Pass/No Pass grading without impacting their high school GPA or ability to fulfill the minimum subject-area eligibility requirements for all California public colleges and some private colleges.

COVID Response - Fall 2020

Given the current health directive limiting large gatherings and the County of San Mateo's placement on the "watchlist," the Board of Trustees directed staff to begin the 2020-21 school year in Distance Learning. The District adopted a Synchronous Learning model in which students receive 180 minutes of Synchronous Online Learning per class per week. All students will receive letter grades (A-F) for all courses. Students were offered broader opportunities for the 2020-2021 school year such as concurrent enrollment at either WASC accredited institutions or Community Colleges. Learn more about these opportunities by visiting the District's [Concurrent Enrollment Webpage](#).

CURRICULUM & GRADING

Graduation Requirements 220 Units in 8 Departmental Areas UC/CSU approved curriculum

English	40 Units	Career Technical Education	10 Units
Mathematics	30 Units	Visual & Performing Arts	10 Units
Physical Education	20 Units	World Language	10 Units
Health	5 Units	Electives	40 Units
Science [1 Physical; 1 Biological]	20 Units	Social Science [US History; Gov/Econ; Ethnic Studies; Modern World History]	35 Units

Grading:

Weighted GPA includes all courses 9-12 with extra point given for Honors and AP.

Unweighted GPA is calculated for courses 9-12
A = 4; B = 3; C = 2; D = 1; F = 0

Class Ranking:

BHS does not rank students.

STUDENT BODY

ATC	Freshmen	Sophomores	Juniors	Seniors
50	378	393	359	369

1549

2023-24
Student Enrollment

80

Certificated
Teachers

370

Class of 2023
Graduates

96%

Class of 2023
Matriculation Rate

81%

Class of 2023 met
UC/CSU a-g
requirements

Ethnicity – Race

Pacific Islander - 7

Black - 5

Filipino - 46

Latino - 320

Asian - 338

White - 653

Multiple - 178

ADVANCED COURSES & TEST RESULTS

All Advanced Placement and Honors courses are Open Access

ADVANCED PLACEMENT

Biology	English Language	World History: Modern	Statistics
Calculus AB	English Literature	Physics I	Studio Art
Calculus BC	Environmental Science	Spanish Language	US History
Chemistry	Italian Language	Spanish Literature	US Gov. & Politics
Computer Science	Macroeconomics		

HONORS

Chinese IV H
Spanish IV H

AP
TESTING
(May 2023)

586

Students Took
AP Exams

1255

Exams
Completed

1034

Qualifying
Scores

233

AP Scholars

SAT & ACT
(2022-2023)

28.3

ACT Mean
Composite

1318

SAT Overall
Mean

652

SAT Mean R/W

666

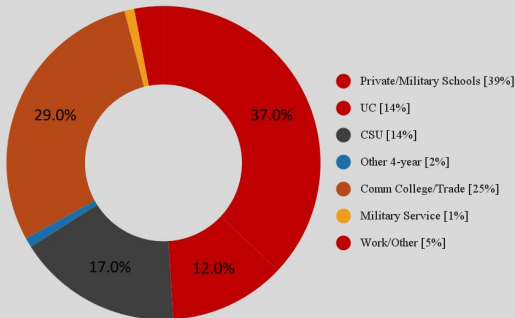
SAT Mean Math

Class of 2023 Standardized Testing

For the latest information on the status of SAT administration at SMUHSD campuses please visit our [website](#). Data in the above tables represents testing during the 2022-2023 school year.

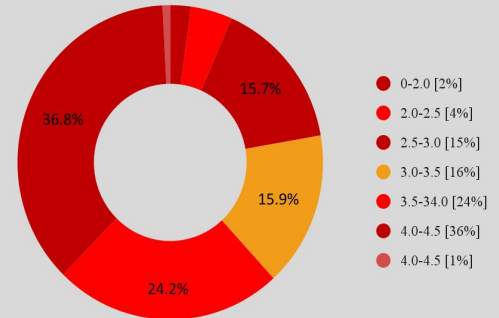
MATRICULATION
(Class of 2023)

Class of 2023 College Enrollment



GRADE POINT
AVERAGE

Class of 2023 GPA (Grades 9-11)



Open Access & Advanced Placement Courses

Burlingame High School offers academically rigorous courses and a variety of Advanced Placement courses. It is District and BHS policy to allow students open enrollment into Advanced Standing, Honors, and Advanced Placement classes.

EAP Results – College Readiness for Class of 2023

*Spring 2022 data for students who participated – 284 for ELA and 269 for Math

The EAP is the Early Assessment Program through the California State University system, and is part of the California Assessment of Student Performance and Progress (CAASPP). In the Spring of 2022, 11th grade students across the State of California took the CAASPP, and the results below are for the Burlingame High School Class of 2023. For more information on the EAP, see <https://www.csstudentsuccess.org/>

	ELA	Math	Notes
BHS Ready	87%	66%	Ready for entry courses in college.
BHS Conditionally Ready	9%	21%	Need additional HS coursework for college preparedness.
BHS Total Ready & Conditionally Ready	96%	87%	Students identified as most likely ready for college work after HS graduation.

COLLEGE MATRICULATION

Data Collected from Annual Senior Surveys (Four Year Aggregate)

Academy of Art University
Agnes Scott College
American University
Arizona State University
Austin Community College
Barnard College
Bates College
Baylor University
Boise State University
Boston College
Boston University
Bowdoin College
Brandeis University
Brown University
Bryn Mawr College
Bucknell University
Butte College
Cabrillo College
California Baptist University
California State Polytechnic University, Humboldt
California State Polytechnic University, Pomona
California State Polytechnic University, San Luis Obispo
California State University, San Bernardino
California State University, Channel Islands
California State University, Chico
California State University, East Bay
California State University, Fullerton
California State University, Long Beach
California State University, Los Angeles
California State University, Monterey Bay
California State University, Northridge
California State University, Sacramento
Cañada College
Carleton College
Carnegie Mellon University
Cebu Doctors' University
Chapman University
City College of San Francisco
Chabot College
Claremont McKenna University
Clovis Community College
College of Marin
College of San Mateo
College of William & Mary
Columbia University
Connecticut College
Contra Costa College
Cornell University
Cuesta College
CUNY Brooklyn College
DePaul University
Dominican University of CA
Duke University
Emerson College
Fashion Institute of Technology
Fairfield University
FIDM – Los Angeles
Foothill College
Fordham University
Fresno Pacific University
Georgetown University
Gonzaga University
Grand Canyon University
Harvard University
Harvey Mudd College
Illinois Institute of Technology
Indiana University at Bloomington
Iowa State University
Johns Hopkins University
Lehigh University
Lewis & Clark College
Linfield University

Loyola Marymount University
Loyola University, Chicago
Manhattan College
Marist College
Massachusetts Institute of Technology
McGill University
Michigan State University
Montana State University
Montana Technical University
Mount Holyoke College
New York University
Northeastern University
Northwest College, Wyoming
Northwestern University
Occidental College
Orange Coast College
Oregon State University
Pace University
Pasadena City College
Pennsylvania State University
Pepperdine University
Pima Community College
Pitzer College
Point Loma Nazarene University
Pomona College
Pratt Institute
Princeton University
Principia College
Purdue University
Queen's University
Quest University Canada
Rensselaer Polytechnic University
Reed College
Rhode Island School of Design
Rice University
Rochester Institute of Technology
Royal Welsh College of Music and Drama
Rutgers University
Sacred Heart University
Saint Mary's College of California
San Diego State University
San Francisco State University
San Jose State University
Santa Barbara City College
Santa Clara University
Santa Monica City College
Santa Rosa Junior College
Sarah Lawrence College
School of the Art Institute of Chicago
Scottsdale Community College
Scripps College
Seattle Central College
Seattle University
Sienna College
Sierra Nevada College
Skidmore College
Skyline College
Sophia University
Sonoma State University
Southern Methodist University
Southern Oregon University
Southwestern University
St. Andrews University
St. Mary's College of Maryland
Stanford University
Syracuse University
Temple University
Texas Christian University
Texas State University
The American University of Paris
The George Washington University
The New School

The Ohio State University
The University of Alabama
The University of Montana-Western
Tufts University
Tulane University
United States Military Academy
United States Naval Academy
University of Arizona
University of British Columbia
University of California, Berkeley
University of California, Davis
University of California, Irvine
University of California, Los Angeles
University of California, Merced
University of California, Riverside
University of California, San Diego
University of California, Santa Barbara
University of California, Santa Cruz
University of Chicago
University of Colorado at Boulder
University of Detroit Mercy
University of Georgia
University of Hawaii at Manoa
University of Illinois at Urbana-Champaign
University of Iowa
University of Kansas
University of Maryland
University of Massachusetts-Lowell
University of Miami
University of Michigan
University of Minnesota
University of Mississippi
University of Missouri
University of Montana
University of Nebraska
University of Nevada, Reno
University of North Carolina, Chapel Hill
University of North Carolina School of the Arts
University of North Texas
University of Notre Dame
University of Oregon
University of Pittsburgh
University of Portland
University of Puget Sound
University of Redlands
University of Rochester
University of San Diego
University of San Francisco
University of Southern California
University of Tennessee
University of Texas, Austin
University of the Pacific
University of Toronto
University of Vermont
University of Vienna
University of Virginia
University of Washington
University of Wisconsin, Madison
Vanderbilt University
Ventura College
Villanova University
Virginia Polytechnic Institute
Washington State University
Washington University in St. Louis
Wellesley College
Wesleyan University
West Virginia University
Western Washington University
Westmont College
Williams College
Whitman College
Willamette University
Yale University

Connections @ BHS

Programs Supporting Student & Community

Building a Connected Community at Burlingame High School

ACADEMIC SUPPORTS Burlingame High School is committed to providing an inclusive academic learning environment for all students. As such, we offer a number of programmatic supports for students at the Tier 1, 2, and 3 levels of our Multi-Tiered System of Supports (MTSS). The Academic Center serves to support the Tier 1 needs of all students. Open after school on a daily basis, students are welcomed and encouraged to come by for group or individual tutoring supports. For students requiring additional supports for academic, behavioral, social or emotional needs, we offer short term Tier 2 research-based interventions like therapeutic groups, a weekly Check-in/Check-out support system and Substance Use Program. Additional tiered supports offered at BHS include Section 504, Special Education, and Wellness Programs.

ATHLETICS In the 2022-2023 school year **over 50%** of our 9th - 12th grade students are connected to the school through Athletics. At BHS, we offer a variety of athletic programs each Fall, Winter, and Spring, including badminton, baseball, basketball, cheerleading, cross country, football, flag football, golf, lacrosse, soccer, softball, swimming, tennis, track and field, volleyball, water polo, and wrestling. BHS is a member of the Peninsula Athletic League (PAL).

CLUBS, MEDIA, AND STUDENT LEADERSHIP The BHS campus community offers a little something for every student! There are over 50 active clubs on campus as well as vibrant student media (BTV, Newspaper, and Yearbook) and leadership (ASB, Ambassadors, and Service Commission) options. The Robotics Program at BHS was nationally ranked in 2019 after just six years.

EDUCATIONAL TECHNOLOGY The BHS community is empowered with digital tools to guide students to be resourceful, creative and responsible digital citizens. Our teachers are supported by Instructional Technology Coordinators and full-time tech support to ensure that our devices are in good repair and teachers have opportunities to learn how to use new technologies in their classrooms. The District has implemented a 1-to-1 device program. All students are provided Chromebooks.

PARENT/GUARDIAN GROUPS The BHS Parents Group is our primary family engagement group, which supports the BHS student learning community via fundraising (the Excellence Fund), communication, and community building. It also assists in organizing families to volunteer in many ways, including supports for Back to School Night, Panther Prep, Panther Preview Day, Open House, Appreciation Events, Family Education, Graduation, and weekly family newsletters. We welcome our families onto campus and connect with them through a variety of booster groups, including Athletics, Cheer, Drama, Italian, and Music Boosters. We are very aware and supportive of the differing needs of our parent communities, and provide ways for them to connect with us as well, including our ELAC and Latino Parent Group/Grupo de Padres Latinos.

ADMINISTRATION

Dr. Jen Fong, *Principal*

Jenny Gibson, *Assistant Principal*

Karen Bioski-Simon, *Assistant Principal*

Aimee Malcolm, *Assistant Principal*



Home of the Panthers

SCHOOL COUNSELING

Traci Kreppel [A-EI] tkreppel@smuhsd.org

Earvin Buckner [Em-La] ebuckner@smuhsd.org

Luis Mashek [Le-Ra] lmashkek@smuhsd.org

Carla Renzi [Re-Z] crenzi@smuhsd.org