

Welcome!

- Please help yourself to a seat
- There are lite snacks and drinks available.
- Restrooms are across the hallway.

- Today's times: 5:30 - 6:30



OZARK SCHOOLS PRESENTS
**CURRICULUM
CONVERSATIONS**



**OPEN DISCUSSION ABOUT
ARTIFICIAL INTELLIGENCE**



Ozark Innovation Center
1600 W. Jackson St.

APRIL 30

5:30 PM - 7:00 PM

**LIGHT REFRESHMENTS
WILL BE PROVIDED**

ANY K-12 PARENT OR GUARDIAN
IS INVITED TO ATTEND

www.ozarktigers.org/curriculumconversations

Agenda:



- Welcome
- Definition of AI - What is it?
- Explore possibilities of AI
- Open discussion
- Questions

AI - Artificial Intelligence

- Types of AI
- Generative AI
 - Consumes existing data
 - “Learns” from it
 - Generates data with similar characteristics
- Thoughts from Chat GPT

AI or Not?

Fun Things...

- A Scottie dog playing in an English cottage garden with summer blooms



Fun Things...

- an older white hair bass fisherman fighting a big one in a boat in beautiful clear lake with his 20 year old grandson in the boat with him





Student AI Integration: 0 to Infinity

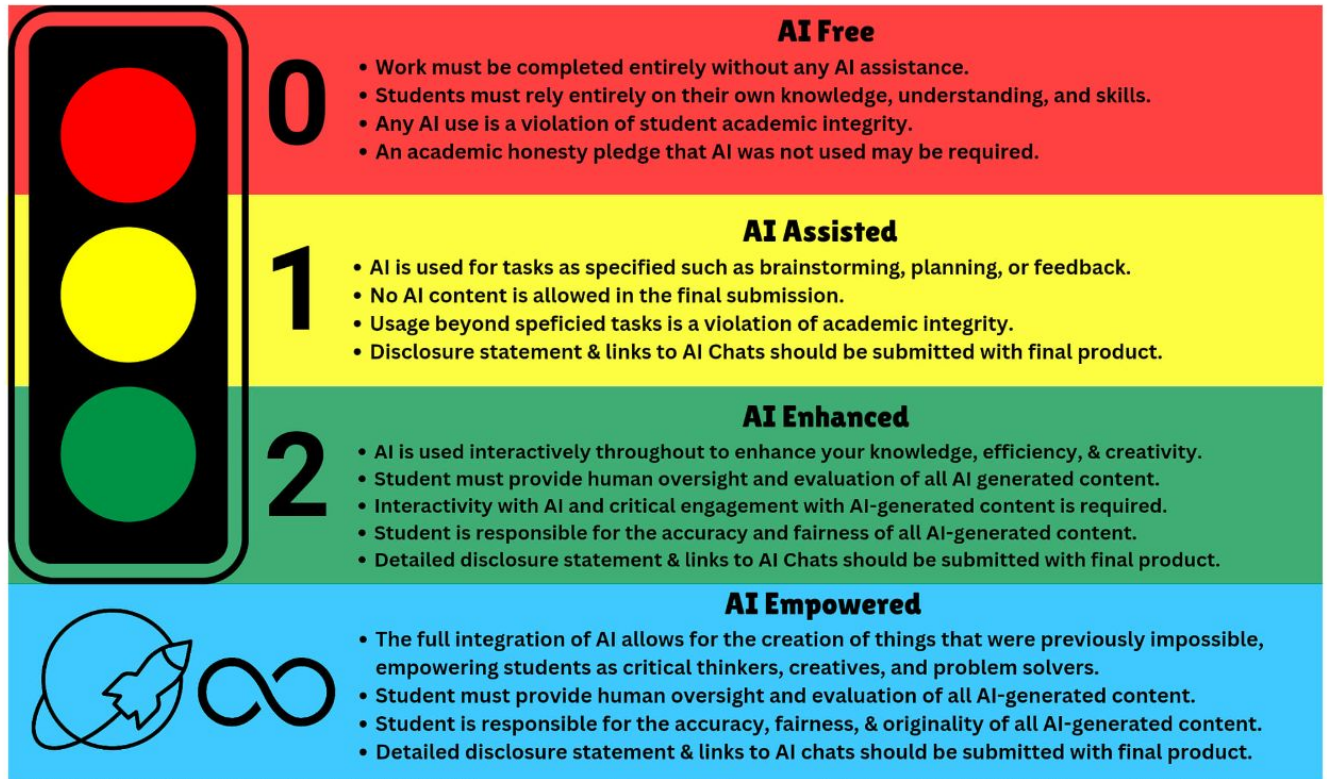
Student AI Usage Continuum for Empowered Learning

To prepare ALL students for the AI-rich future that awaits them, it is imperative that they ALL learn ABOUT AI, and have opportunities to learn WITH AI in increasingly interactive and complex ways.

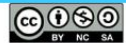
District Considerations...

We will work together with the school community of students, teachers, staff, and parents to decide how we want to use AI.

- Grade levels
- Types of projects
- Instructional practices
- Etc.



Adapted by Vera Cubero 4/28/24 for the North Carolina Department of Public Instruction (NC DPI) from the work of Dr. Leon Furze, Dr. Mike Perkins, Dr. Jasper Roe FHEA, & Dr. Jason Mcvaugh
[Link to Original Work](#)



Creative Commons Licensed BY (attribution) NC (Non Commercial) SA (Share Alike)
 To remix this for your use case, you may make an editable copy, using this [TEMPLATE LINK](#)
 Please maintain CC licensing and all attributions in all duplications, references, or remixing.



Can I Use AI on this Assignment?

Generative AI Acceptable Use Scale

Generative AI refers to any of the thousands of Artificial Intelligence tools in which the model generates new content (text, images, audio, video, code, etc) This includes, but is not limited to, Large Language Models/ LLMs such as ChatGPT, Google Gemini, etc, Image creators such as Dall-E3, Adobe Firefly, and any tools with built in generative AI capabilities such as Microsoft CoPilot, Google Duet, Canva, etc etc)

	Level of AI Use	Full Description	Disclosure Requirements
0	NO AI Use	This assessment is completed entirely without AI assistance. AI Must not be used at any point during the assessment. This level ensured that student rely solely on their own knowledge, understanding, and skills.	No AI disclosure required May require an academic honesty pledge that AI was not used.
1	AI-Assisted Idea Generation and Structuring	No AI content is allowed in the final submission. AI can be used in the assessment for brainstorming, creating structures, and generating ideas for improving work.	AI disclosure statement must be included disclosing how AI was used. Link(s) to AI chat(s) must be submitted with final submission.
2	AI-Assisted Editing	No new content can be created using AI. AI can be used to make improvements to the clarity or quality of student created work to improve the final output.	AI disclosure statement must be included disclosing how AI was used. Link(s) to AI chat(s) must be submitted with final submission.
3	AI for Specified Task Completion	AI is used to complete certain elements of the task, as specified by the teacher. This level requires critical engagement with AI generated content and evaluating its output. You are responsible for providing human oversight and evaluation of all AI generated content.	All AI created content must be cited using proper MLA citation. Link(s) to AI chat(s) must be submitted with final submission.
4	Full AI Use with Human Oversight	You may use AI throughout your assessment to support your own work in any way you deem necessary. AI should be a 'co-pilot' to enhance human creativity. You are responsible for providing human oversight and evaluation of all AI generated content.	You must cite the use of AI using proper MLA or APA citation. Link(s) to AI chat(s) must be submitted with final submission.

District Considerations...

We will work together with the school community of students, teachers, staff, and parents to decide how we want to use AI.

- Grade levels
- Types of projects
- Instructional practices
- Etc.

Adapted by Vera Cubero for the North Carolina Department of Public Instruction (NC DPI) from the work of Dr. Leon Furze, Dr. Mike Perkins, Dr. Jasper Roe FHEA, & Dr. Jason Mcvaugh
[Link to Original Work](#)



Creative Commons Licensed BY (attribution) NC (Non Commercial) SA (Share Alike)
 To remix this for your use case, you may make an editable copy, using this [TEMPLATE LINK](#).
 Please maintain CC licensing and all attributions in all duplications, references, or remixing.

Examples of AI Enhanced Apps

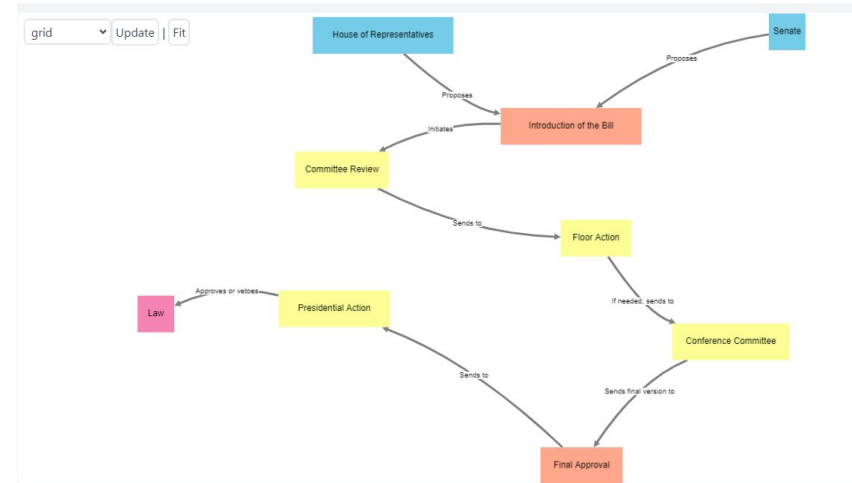
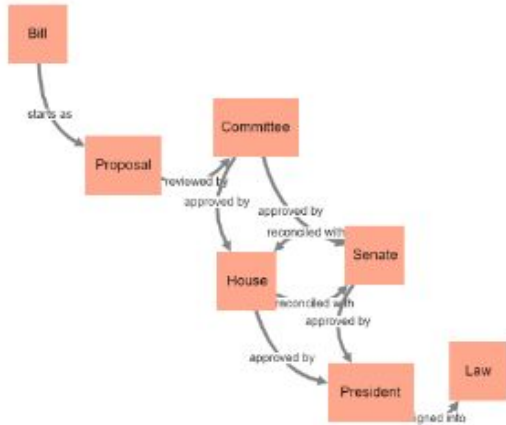
- Microsoft Math Solver - free app to help students understand mathematical questions through trigonometry (intervention tool with step by step solutions & gamifying for practice questions)
- DeepL - is a translation tool better than Google Translate which also has a writing component as well
- Globe Explorer - search engine for research which helps students go from very broad topics to very specific ones (for tonight 1. hummingbird migration 2. Decline in bird population?)

Examples of AI Enhanced Apps

- Grammarly -help with editing papers (now it will write the paper for you)
- InstaGraph - allows people to create and share knowledge graphs, by simply typing the questions (such as "Solar System" or "Queen and its ten popular songs") and letting GPT to generate them.
 - How does a bill become a law (old way)
 - How does a bill become a law (InstaGraph)

Examples of AI Enhanced Apps

How a bill becomes a law -
Instagram



Examples of AI Enhanced Apps

- Suno - creates original songs “a crooner song about the fear of using AI applications”
- Digital Dilemma 1, Digital Dilemma 2

[Verse 1]

In this digital age
Our devices in hand
AI advancements
I just don't understand
The fear of machines
Their power and might
But I can't help but think
Are we losing the fight?

[Verse 2]

With every app and gadget that we embrace
A voice in my mind says
Slow down your pace
Smart homes and smart cars
They know all our desires
But what about the days when we were the sole choirs

[Verse 3]

Artificial intelligence
It's a double-edged sword
The more we rely on it
The more we're ignored
Privacy is slipping
It's fading away
Oh
I'm longing for the simpler times
I must say

Next Steps in the Conversation

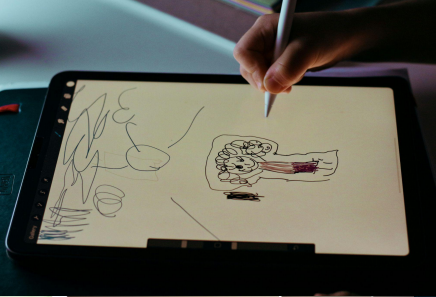
- Form an AI Committee (Sp 24)
- Survey internal / external
- Review (adapt?) policies
- Create protocols / procedures
- Implementation (Winter 24)

Volunteer to give survey feedback -
craigcarson@ozarktigers.org

[Neo Noir Generator](#) (a circular staircase like at the United States Supreme Court)

Next Steps





Questions?



Thank you!

Volunteer to give survey feedback -
craigcarson@ozarktigers.org

