

Shoreline School District

Enrollment Trends, Demographics, and Projections

Prepared by
William L. (“Les”) Kendrick Ph.D.
Educational Data Solutions, LLC
P.O. Box 9693
Seattle, WA 98109

April 2024

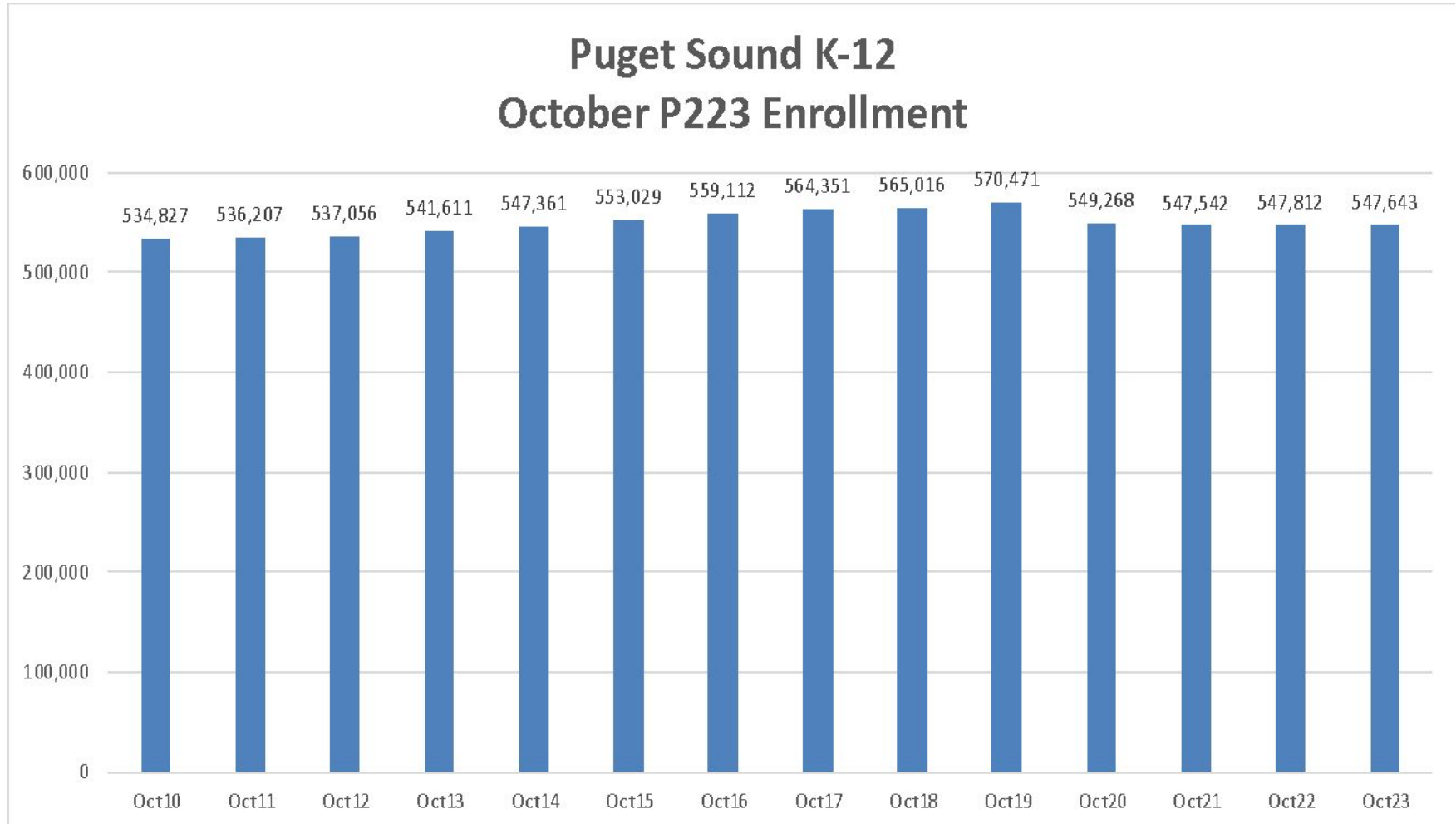


Outline

- Enrollment Trends Shoreline and the Region
- Factors Impacting Enrollment
 - Births
 - Housing
- Predicting Future Enrollments
- Forecast Numbers
 - District
 - Schools

Puget Sound Enrollment Trends (Four County Region)

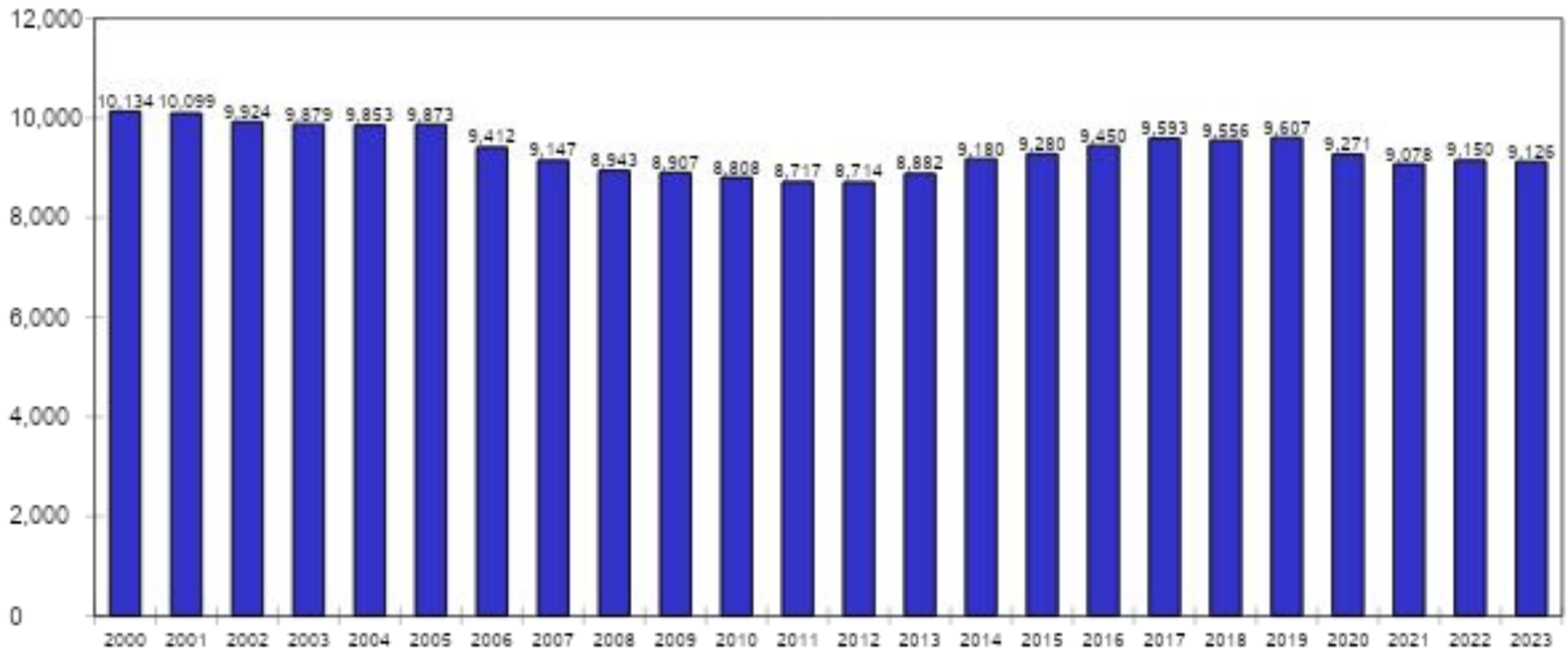
Enrollment in the four-county Puget Sound region is still about 23,000 students less than what it was prior to the pandemic.



District Enrollment Trend

P223 Enrollment (October)

Does Not Include Full-Time Running Start Students
or Students Enrolled in Open Doors



King County Public School Districts P223

Change in Enrollment: Oct 2019 to Oct 2023

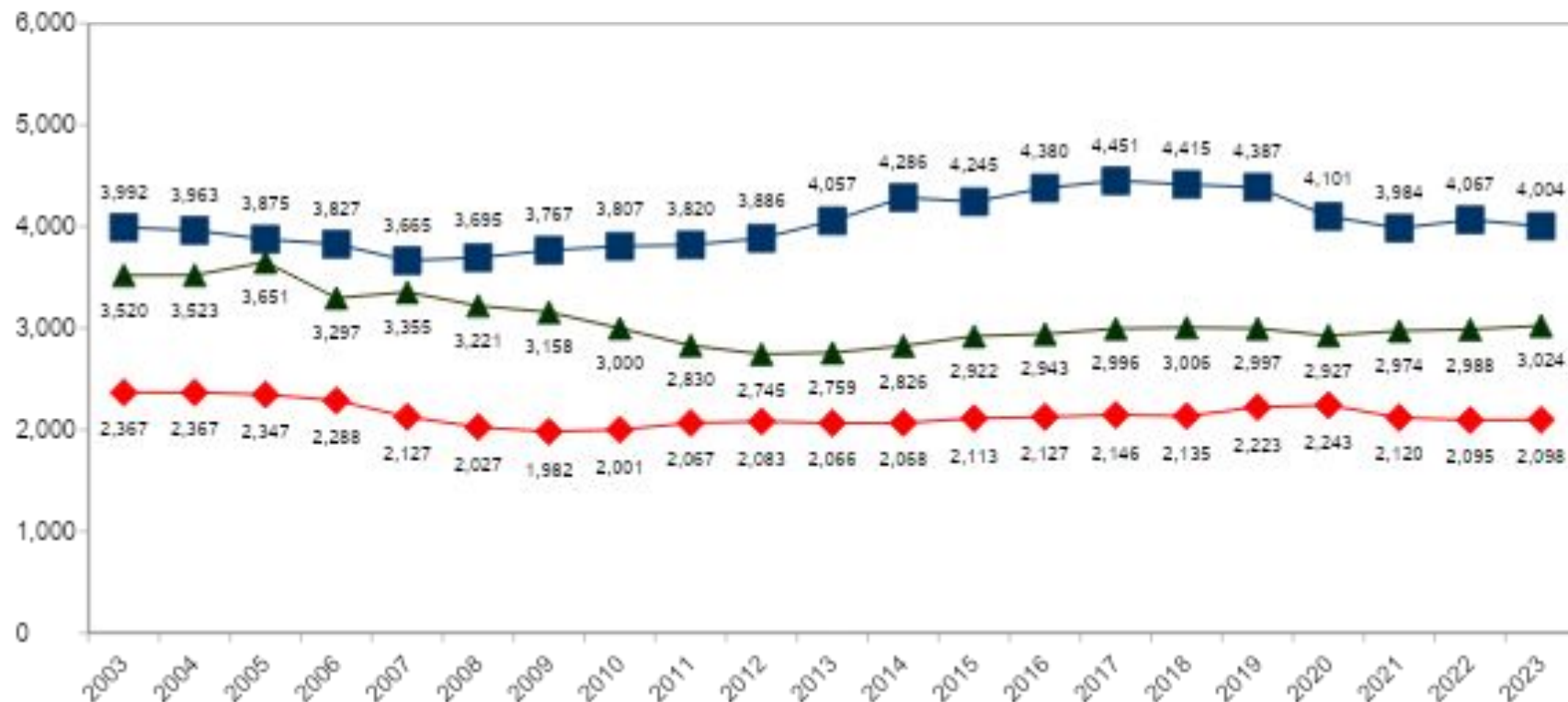
Numbers may have changed since originally reported.

Latest October Enrollment Trends								
(Historical Data May Have Changed Since Originally Reported)								
							Change Oct22	Change Oct19
King County Districts	Oct 2019	Oct 2020	Oct 2021	Oct 2022	Oct 2023		to Oct23	to Oct23
Auburn	16,906	16,194	16,601	17,061	17,239 *		178	333
Bellevue	20,323	19,496	18,750	18,353	18,769		416	-1,554
Enumclaw	4,104	3,951	4,046	4,236	4,309 *		73	205
Federal Way	21,624	20,609	20,175	20,436	20,552 *		116	-1,072
Highline	18,189	17,745	17,476	17,341	17,069		-272	-1,120
Issaquah	20,470	19,442	18,905	18,902	18,800 *		-102	-1,670
Kent	25,913	24,587	24,153	24,481	24,447		-34	-1,466
Lake Washington	31,106	30,648	30,553	30,423	30,605		182	-501
Mercer Island	4,387	4,125	4,007	4,012	3,932		-80	-455
Northshore	22,943	22,686	22,419	22,320	22,391		71	-552
Renton	15,176	14,922	14,595	14,387	14,128		-259	-1,048
Riverview	3,268	3,001	2,983	3,035	2,988		-47	-280
Seattle	53,628	52,383	50,192	50,065	49,230		-835	-4,398
Shoreline	9,604	9,271	9,078	9,150	9,128		-22	-476
Skykomish	51	48	38	35	42		7	-9
Snoqualmie	7,021	6,704	6,965	6,897	6,982		85	-39
Tahoma	8,846	8,415	8,621	8,831	8,874		43	28
Tukwila	2,758	2,650	2,529	2,511	2,624		113	-134
Vashon Island	1,469	1,439	1,465	1,475	1,434		-41	-35
LW Technical	204	175	166	165	154		-11	-50
Renton Technical	1	1	0	0	0		0	-1
CHARTER SCHOOLS					0		0	
Summit Atlas	344	453	479	458	545		87	201
Rainier Prep	350	346	327	334	335		1	-15
Summit Sierra	507	379	314	232	222		-10	-285
Rainier Valley Leadership Academy (Green Dot)	378	162	161	145	163		18	-215
Impact Salish Elementary		130	300	351	324		-27	324
Impact Public Schools	283	415	607	594	485		-109	202
Impact Black River Elementary	0	0	0	0	132		132	132
Ashe	90	0	0	0	0		0	-90
Why Not You Academy			104	149	186		37	186
Total	289,943	280,377	276,009	276,379	276,089		-290	-13,854
Change		-9,566	-4,368	370	-290			
* Counts include transitional kindergarten.								

Shoreline Enrollment by Level

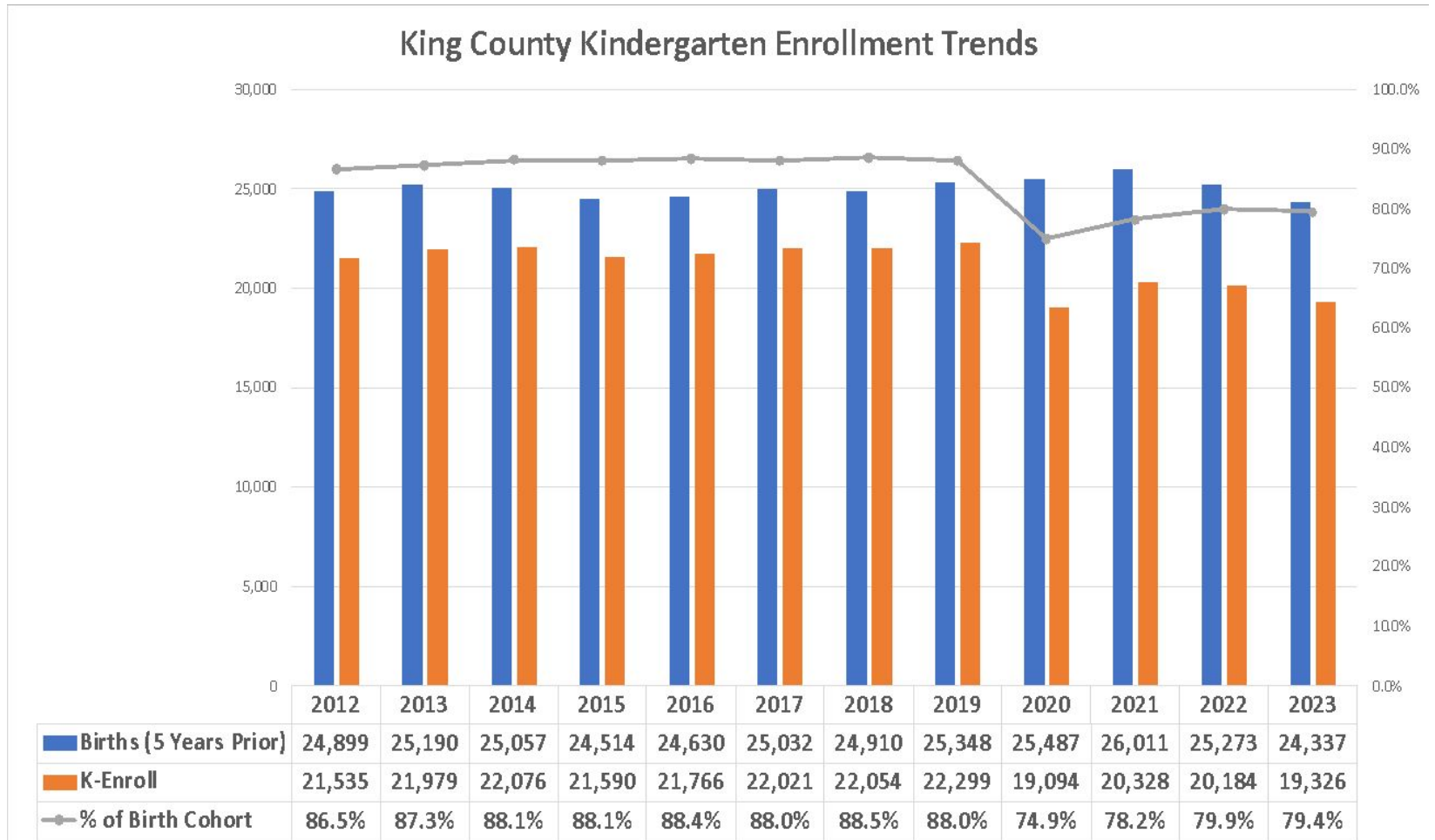
October Headcount

(Excludes Running Start Only Students)



Kindergarten Enrollment Trends

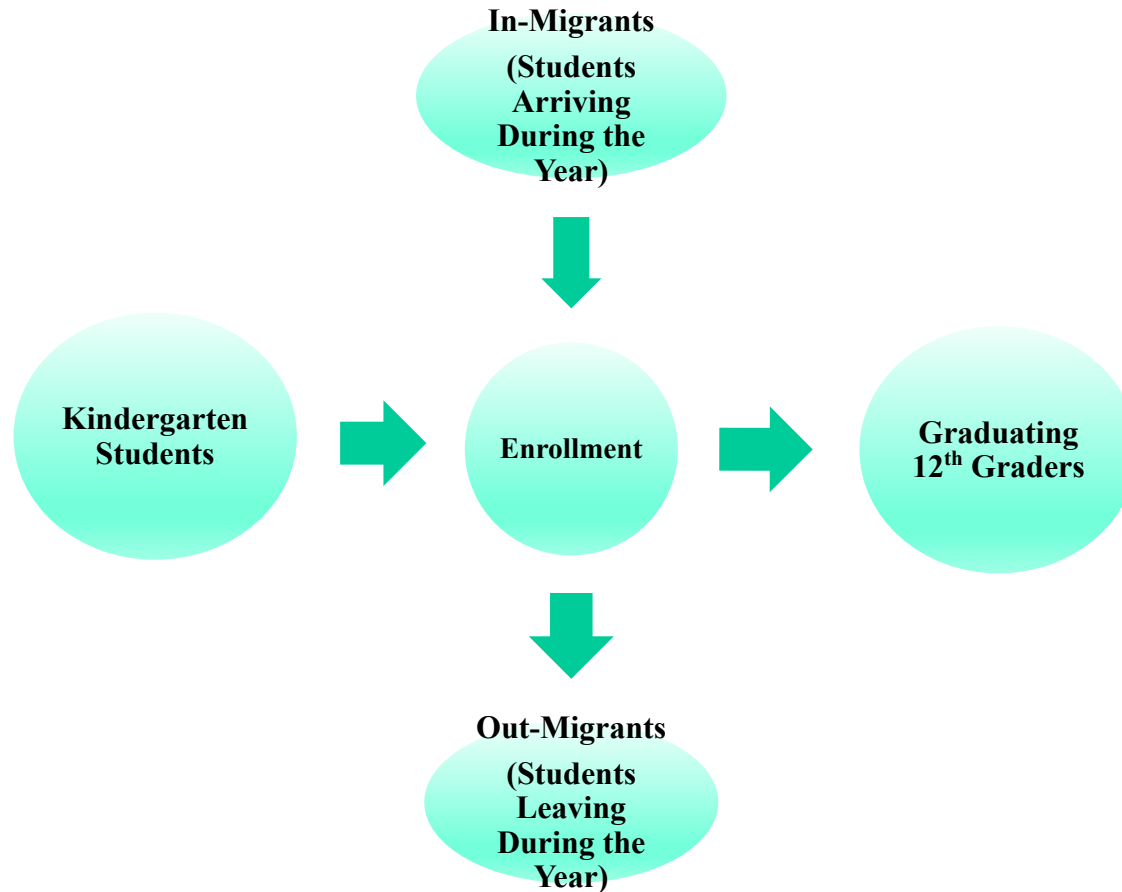
King County Public Schools



Summary of Trends

- Enrollment Much Lower Post-Covid in Shoreline and the Region
- Some increase in private school enrollment but the effects vary by district; not a significant factor in Shoreline as far as we can tell.
- Kindergarten remains the worst problem everywhere.
- Births are trending down also (next).
- Districts with a lot of new and affordable housing (especially single family housing) are the ones seeing the best growth trends post-covid.

The Dynamics of Enrollment

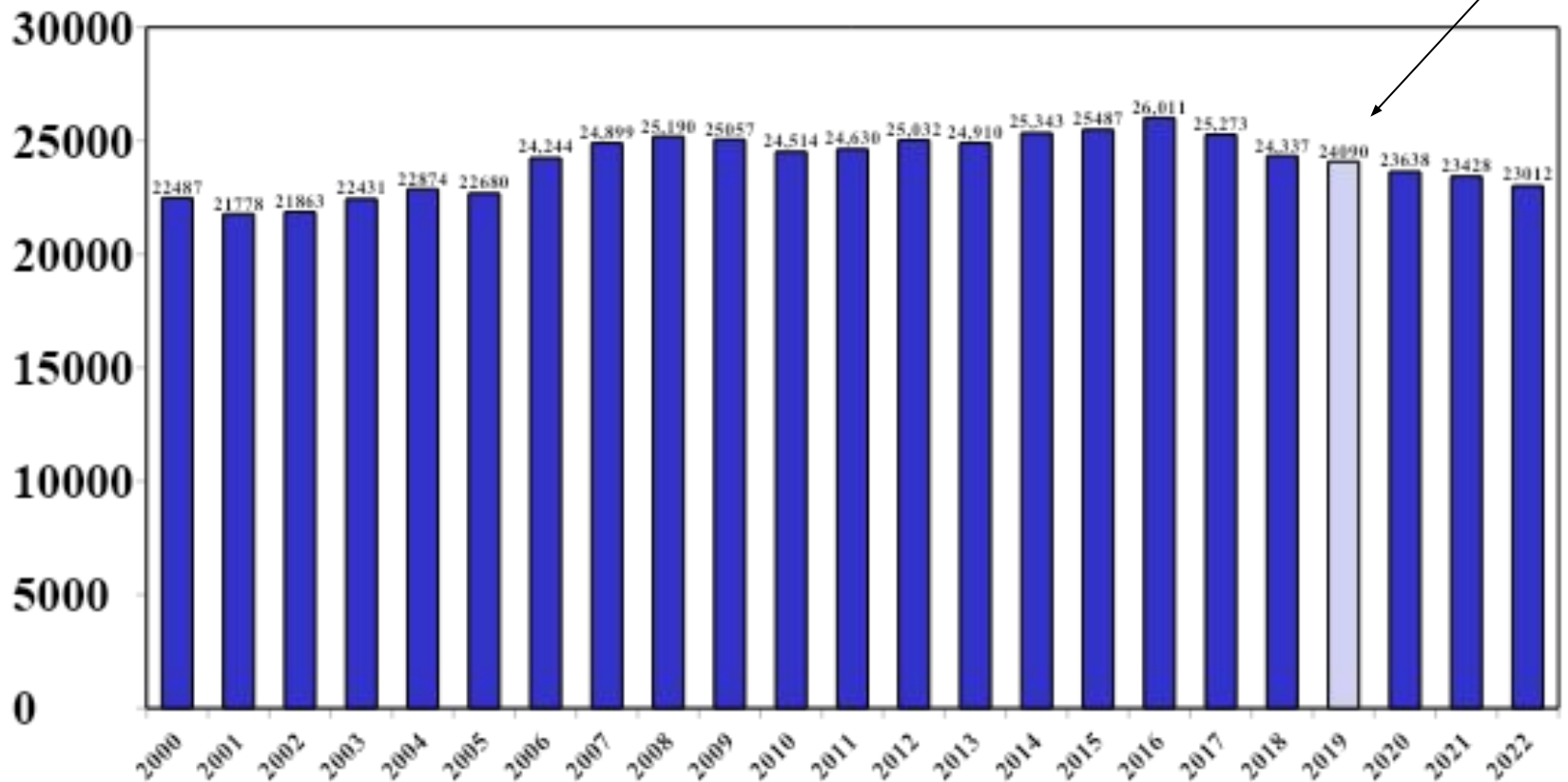


King County Births

Source: Washington State Health Department

Note: The 2021 birth number comes from the CDC

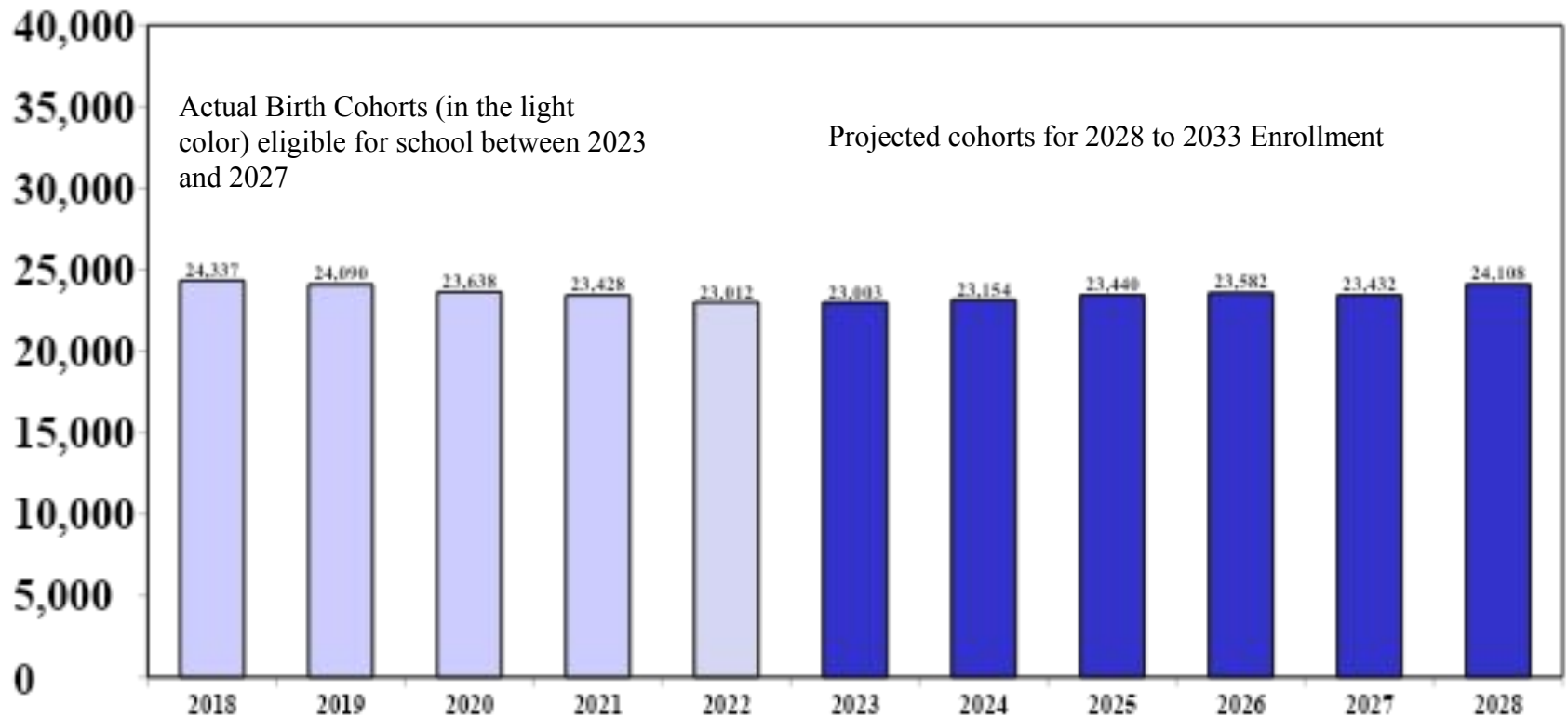
Next year's cohort



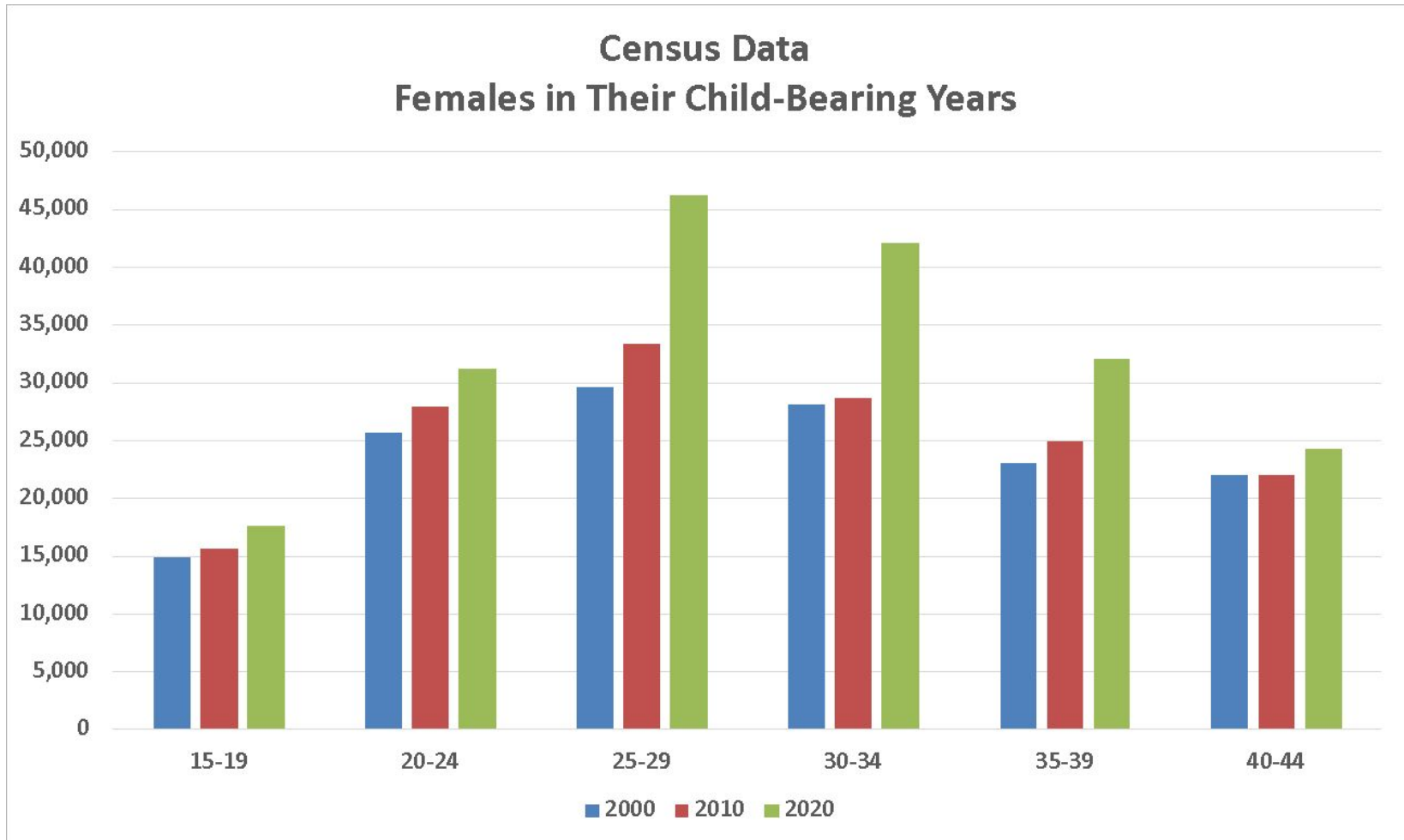
King County Birth Projections

(Based on the Average the Fertility Rates for the Past Two Years
and Projected Growth in Females in Their Child-Bearing Years
Using the OFM Medium Range Population Forecast)

Projections

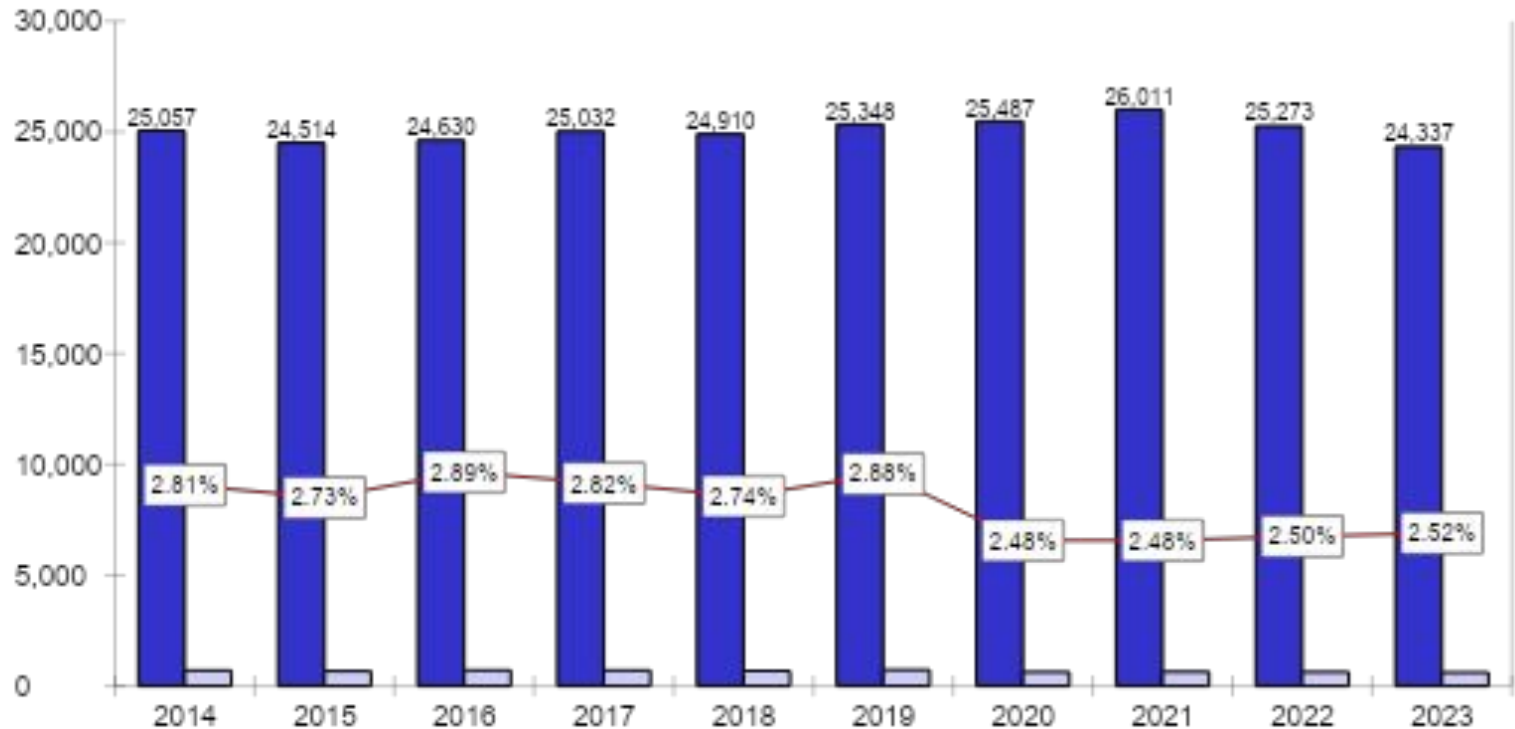


Seattle School District Census Data



Shoreline School District

K Enrollment as a Percent of King County Births

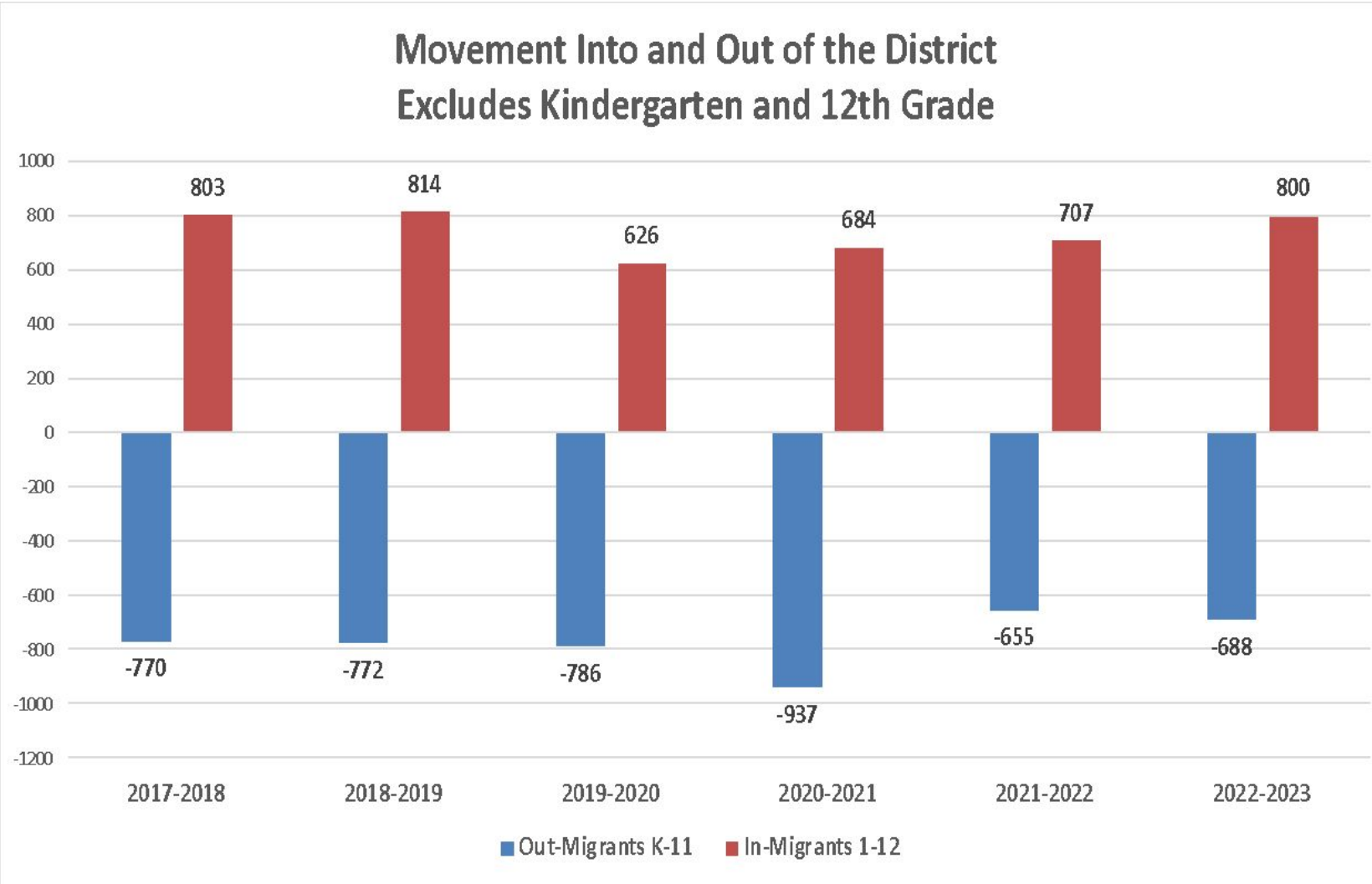


Shoreline Enrollment

Grade	<u>Oct 13</u>	<u>Oct 14</u>	<u>Oct15</u>	<u>Oct16</u>	<u>Oct17</u>	<u>Oct18</u>	<u>Oct19</u>	<u>Oct20</u>	<u>Oct21</u>	<u>Oct22</u>	<u>Oct23</u>
0	694	704	670	711	706	683	729	631	644	632	613
1	720	738	734	696	730	744	693	708	644	693	630
2	663	755	751	759	720	734	757	662	672	670	710
3	641	687	760	762	750	724	726	720	643	690	679
4	704	664	681	764	787	754	718	702	699	662	704
5	635	738	649	688	758	776	764	678	682	720	668
6	664	673	732	661	691	758	770	749	674	684	728
7	692	692	673	753	686	692	763	753	718	681	698
8	710	703	708	713	769	685	690	741	728	730	672
9	766	819	749	767	768	827	770	735	774	777	812
10	722	733	767	755	760	764	819	750	721	781	782
11	626	707	707	731	740	689	710	751	723	714	756
12	<u>645</u>	<u>567</u>	<u>699</u>	<u>690</u>	<u>728</u>	<u>726</u>	<u>698</u>	<u>691</u>	<u>756</u>	<u>716</u>	<u>674</u>
Total	8882	9180	9280	9450	9593	9556	9607	9271	9078	9150	9126

Difference Between Entering K Exiting 12th	-67	-47	-124	-103
--	-----	-----	------	------

Movement into and out of the District (Excluding Kindergarten and 12th Grade)

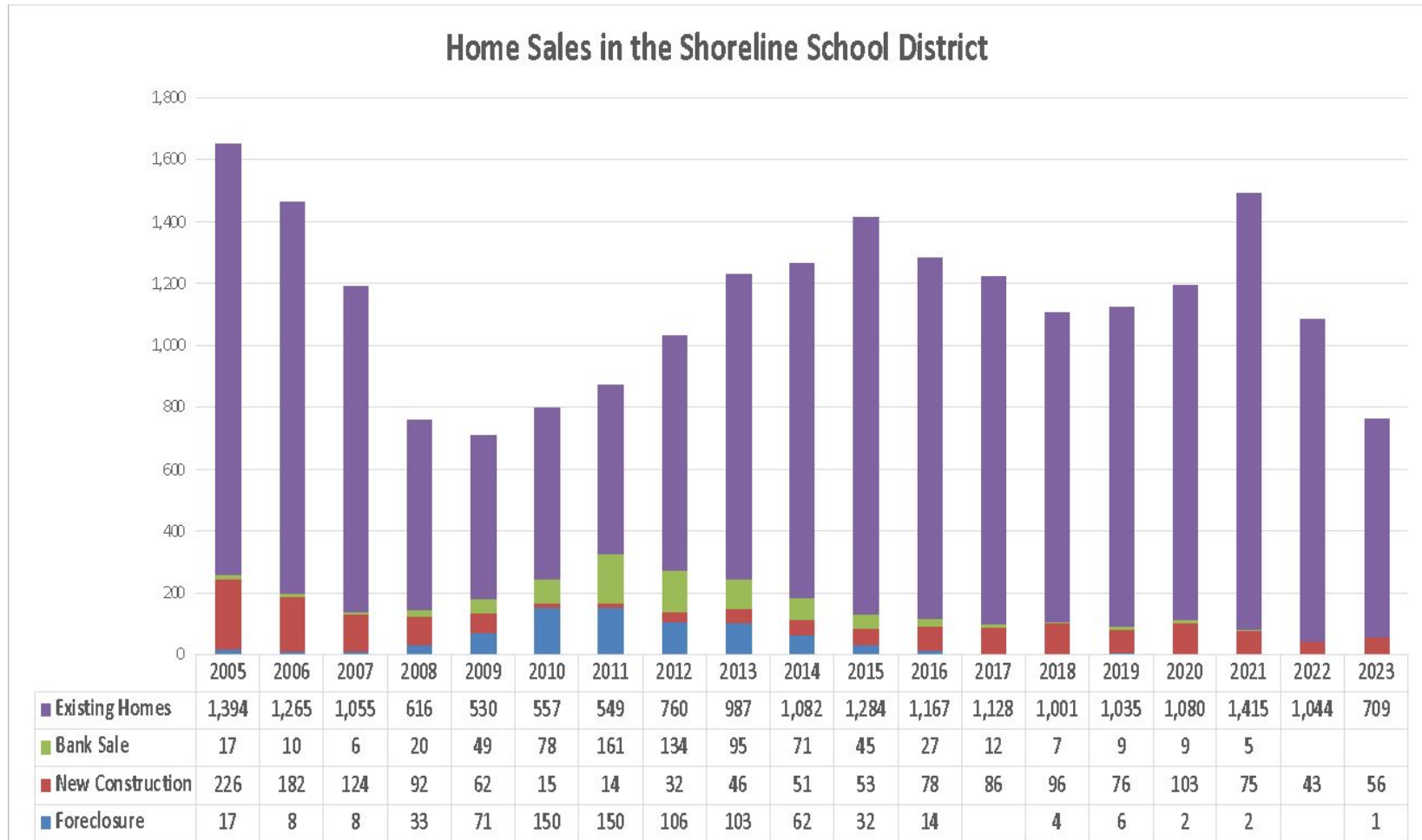


Housing

Will new housing produce enrollment growth?

Home Sales in Shoreline

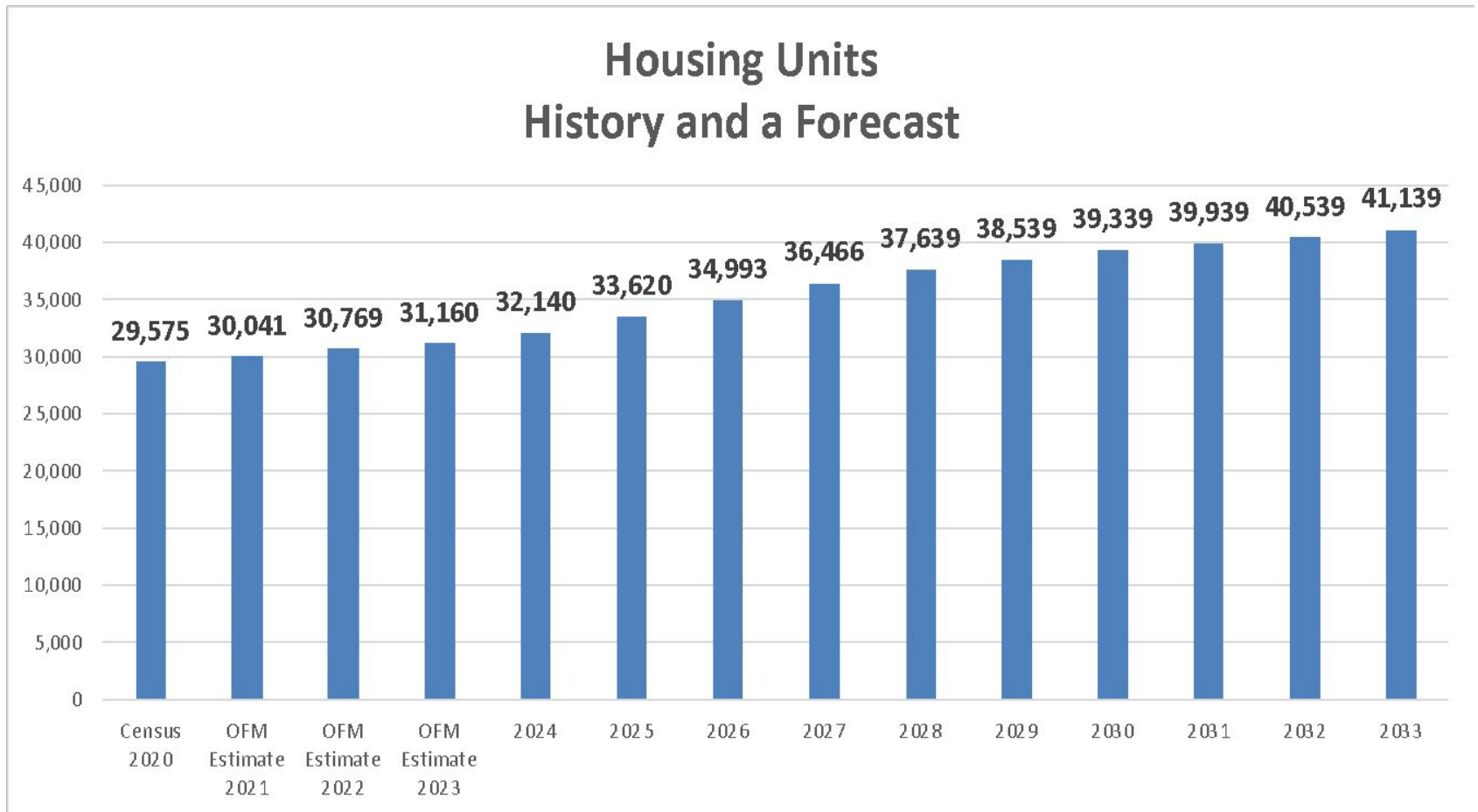
Compiled from Public and Private Sources
2005-2023



Housing in the District

History and a Forecast by Year

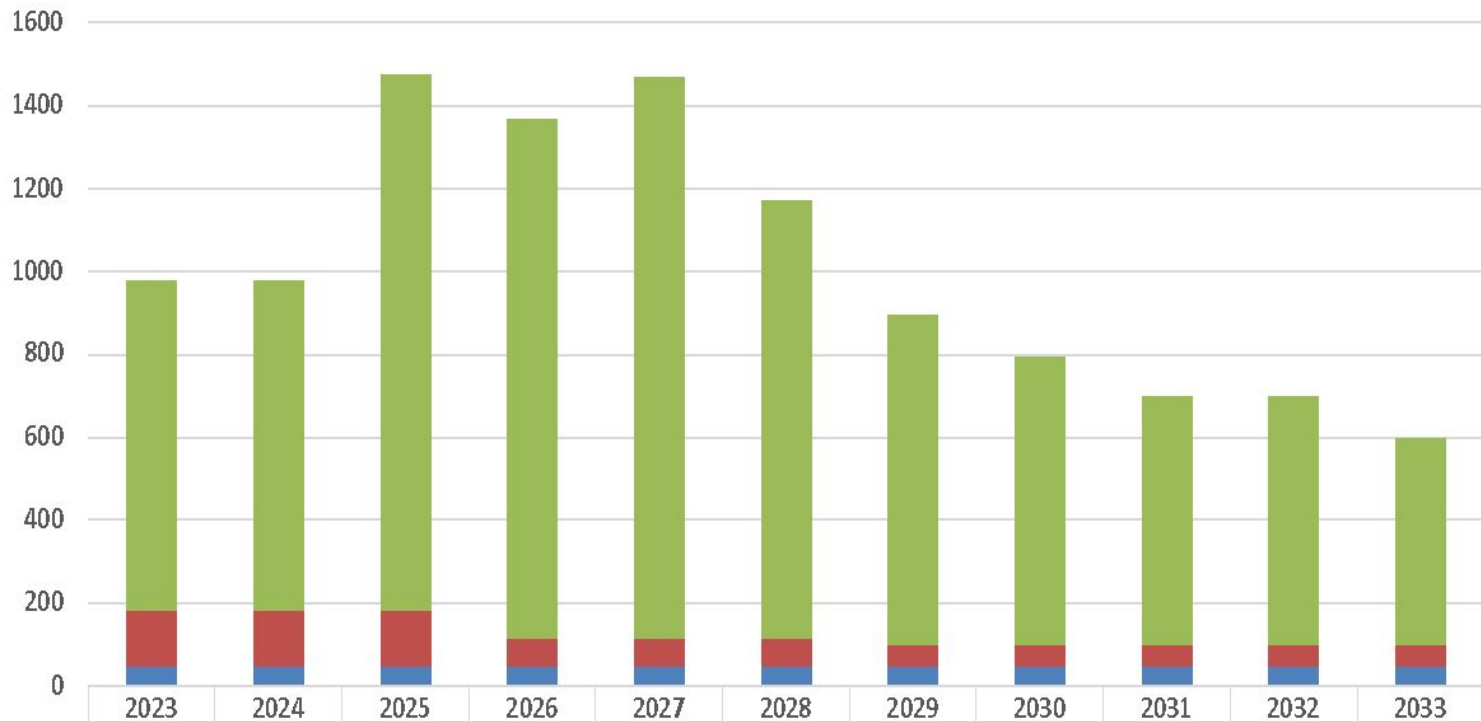
Based on Recent Census Data, Pipeline Data, Permit Data and the PSRC's Land Use Forecast



Number and Type of Units Projected by Year

The specific numbers for a given year may be higher or lower than what we have assumed.

Projected Number of Units Added by Type of Unit and Year



■ Apartments	799	799	1299	1256	1356	1056	800	700	600	600	500
■ Townhomes	131	131	131	67	67	67	50	50	50	50	50
■ Single-family	50	50	50	50	50	50	50	50	50	50	50

Shoreline School District					
Student Generation Rates by Grade Level and Housing Type					
Permit Years 2017-2021					
2/28/23					
Permit Type	Permit Subtype	Number of Units	Grade Level	Students Generated	SGR
MFR	Apartment	1148	K-5	47	0.041
			6-8	21	0.018
			9-12	25	0.022
		APT Student Subtotal→		93	0.081
	Townhouse	280	K-5	8	0.029
			6-8	3	0.011
			9-12	4	0.014
		TWN Student Subtotal→		15	0.054
			MFR Totals→	108	0.076
SFR	New SFR	270	K-5	80	0.296
			6-8	24	0.089
			9-12	19	0.070
		SFR Student Subtotal→		123	0.456
			SFR Totals→	123	0.456

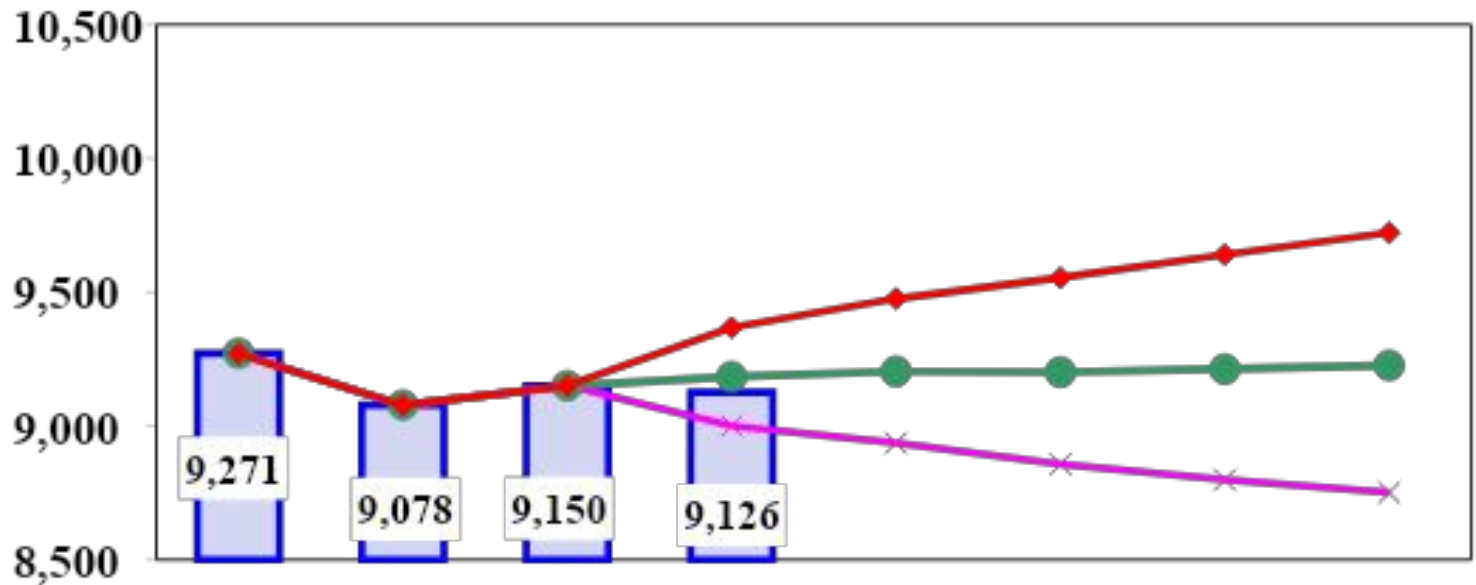
Looking at Some of the Latest Data

<u>Current Data for Apartment Buildings Completed Between 2018 and 2023</u>					
	<u>Units</u>	<u>% of Units</u>	<u>Students Oct 2023</u>	<u>Rate</u>	
Studio	425	20%	1	0.00	
1 Bdrm	1185	55%	33	0.03	
2 Bdrm	465	22%	85	0.18	
3 + Bdrms	61	3%	63	1.03	
	2136	100.0%	182	0.09	

Data includes 16 individual apartment developments completed between 2018 and 2023.

Enrollment Projections

October 2023 Enrollment Compared to Low, Medium, High Forecasts from Last Year (Headcount)



Basic Methodology

- Kindergarten
 - Average share of the birth cohort enrolled in Shoreline Schools
 - Using recent history because things have changed since Covid
 - PLUS: Students from new housing
- Continuing Grades
 - Average net change as students progress (cohort rates – next slide)
 - PLUS: Students expected from new housing
- Low, Medium, and High Forecasts
 - Low and High about one-percent lower or higher growth annually
 - Acceptable error rate for a one year forecast
 - Recommend Medium (Our Best Estimate)

Enrollment History and Cohort Rates Used in the Model

Enrollment History for Shoreline

Birth Year											
	2008	2009	2010	2011	2012	2013	2014	2015	2016	2017	2018
County Births	25,190	25,057	24,514	24630	25032	24910	25348	25487	26011	25273	24337
% of Cohort	2.76%	2.81%	2.73%	2.89%	2.82%	2.74%	2.88%	2.48%	2.48%	2.50%	2.52%
Local Births											
Shoreline	505	507	497	526	532	572	497	526	532	572	517
Lake Forest Park	101	108	94	106	81	85	94	106	81	85	85
Total	606	615	591	632	613	657	591	632	613	657	602
% of Local	1.15	1.14	1.13	1.13	1.15	1.04	1.23	1.00	1.05	0.96	1.02
Cohort Rates											
Shoreline Enrollment											

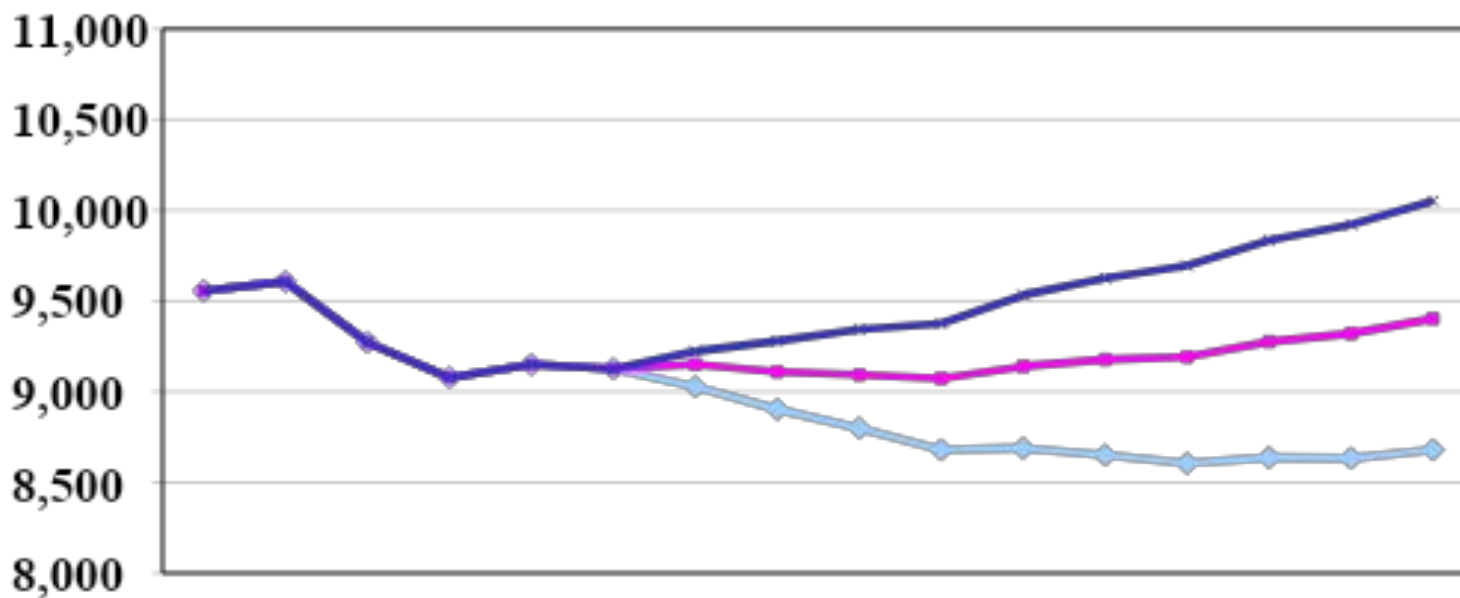
Shoreline School District Updated Forecast

Low, Medium, and High

2024-2033

Based on grade level enrollment trends, births,
and projected growth from new housing

The Medium Range Forecast is Recommended at this Time



School Forecasts

Projection Summary by School

Medium Growth Projections (2024-2033)

	Oct-19	Oct-20	Oct-21	Oct-22	Oct-23	Oct-24	Oct-25	Oct-26	Oct-27	Oct-28	Oct-29	Oct-30	Oct-31	Oct-32	Oct-33
Briarcrest	524	446	430	462	468	468	454	458	468	473	492	490	488	485	482
Brookside	473	396	347	340	365	362	362	365	372	380	370	377	385	391	398
Echo Lake	427	403	391	408	399	396	404	410	407	406	403	409	416	422	430
Highland Terrace	467	380	383	350	330	340	353	376	391	405	417	425	434	441	449
Lake Forest Park	506	449	438	426	393	378	367	353	355	348	360	367	375	381	387
Meridian Park	748	505	522	528	514	553	531	538	508	526	544	545	549	551	553
North City Overflow K	277														
Parkwood	455	377	390	421	409	426	439	445	444	444	441	460	479	496	512
Ridgecrest	514	450	440	451	447	446	451	442	478	503	513	508	505	500	496
Syre	485	446	428	471	464	426	398	377	333	325	322	328	335	341	346
Cascade K-8	142	133	133	140	122	130	129	129	128	130	131	134	137	139	141
H.M. EXC	91	115	80	68	90	78	77	77	77	78	79	80	82	83	85
Private Sp. Ed.	0	1	2	2	3	3	3	2	2	2	2	3	3	3	3
Totals	5109	4101	3984	4067	4004	4007	3969	3972	3964	4022	4074	4126	4189	4233	4282
Einstein	715	1131	1038	1014	998	1015	1013	985	1008	986	977	961	973	990	1009
Kellogg	663	991	977	982	1004	1000	1014	1010	1046	1030	1022	995	1003	1020	1039
Cascade K-8	80	76	64	69	59	56	57	57	61	57	56	54	56	58	60
H.M. EXC	37	42	37	26	35	31	33	32	34	31	30	30	31	32	33
Private Sp. Ed.	3	3	4	4	2	2	2	3	3	3	2	2	2	3	3
Totals	1498	2243	2120	2095	2098	2103	2119	2087	2151	2106	2088	2042	2065	2103	2144
Shorecrest	1491	1452	1467	1480	1493	1494	1492	1487	1455	1488	1494	1493	1484	1462	1455
Shorewood	1504	1473	1505	1505	1528	1544	1528	1544	1501	1521	1518	1529	1534	1520	1519
H.M. EXC	0	0	0	0	0	0	0	0	0	0	0	0	0	0	0
Private Sp. Ed.	2	2	2	3	3	3	3	3	2	3	3	3	3	3	3
Totals	2997	2927	2974	2988	3024	3041	3022	3034	2958	3011	3015	3024	3021	2985	2976
Totals	9604	9271	9078	9150	9126	9151	9110	9093	9073	9140	9177	9192	9276	9320	9403

Projection Summary by School

Low Growth Projections (2024-2033)

	Oct-19	Oct-20	Oct-21	Oct-22	Oct-23	Oct-24	Oct-25	Oct-26	Oct-27	Oct-28	Oct-29	Oct-30	Oct-31	Oct-32	Oct-33
Briarcrest	524	446	430	462	468	456	438	438	445	452	470	468	466	463	461
Brookside	473	396	347	340	365	354	350	350	353	363	353	360	368	374	380
Echo Lake	427	403	391	408	399	385	390	392	387	388	386	391	398	404	411
Highland Terrace	467	380	383	350	330	332	341	361	373	388	399	407	416	423	430
Lake Forest Park	506	449	438	426	393	369	354	337	338	333	344	351	359	364	370
Meridian Park	748	505	522	528	514	541	513	514	482	501	519	520	524	525	528
North City Overflow K	277														
Parkwood	455	377	390	421	409	416	423	426	422	423	421	439	458	473	489
Ridgecrest	514	450	440	451	447	434	435	423	455	480	490	486	483	478	474
Syre	485	446	428	471	464	416	384	360	316	311	308	314	321	326	331
Cascade K-8	142	133	133	140	122	127	124	123	122	124	125	128	131	133	135
H.M. EXC	91	115	80	68	90	77	75	74	73	74	75	77	78	80	81
Private Sp. Ed.	0	1	2	2	3	3	2	2	2	2	2	2	2	3	3
Totals	5109	4101	3984	4067	4004	3910	3827	3799	3770	3838	3894	3942	4003	4045	4092
Einstein	715	1131	1038	1014	998	1013	997	957	968	920	895	869	887	905	922
Kellogg	663	991	977	982	1004	997	998	981	1004	961	936	899	913	932	949
Cascade K-8	80	76	64	69	59	56	56	56	59	53	51	49	51	53	55
H.M. EXC	37	42	37	26	35	31	33	31	32	29	28	27	28	29	30
Private Sp. Ed.	3	3	4	4	2	2	2	3	3	2	2	2	2	2	2
Totals	1498	2243	2120	2095	2098	2098	2086	2027	2066	1965	1911	1847	1881	1921	1959
Shorecrest	1491	1452	1467	1480	1493	1484	1476	1457	1399	1426	1410	1390	1352	1307	1285
Shorewood	1504	1473	1505	1505	1528	1533	1512	1513	1443	1458	1433	1424	1398	1358	1341
H.M. EXC	0	0	0	0	0	0	0	0	0	0	0	0	0	0	0
Private Sp. Ed.	2	2	2	3	3	3	3	3	2	2	2	2	2	2	2
Totals	2997	2927	2974	2988	3024	3020	2990	2973	2845	2886	2846	2817	2753	2667	2629
Totals	9604	9271	9078	9150	9126	9028	8903	8799	8680	8689	8651	8606	8637	8633	8680

Projection Summary by School

High Growth Projections (2024-2033)

	Oct-19	Oct-20	Oct-21	Oct-22	Oct-23	Oct-24	Oct-25	Oct-26	Oct-27	Oct-28	Oct-29	Oct-30	Oct-31	Oct-32	Oct-33
Briarcrest	524	446	430	462	468	467	457	465	479	491	515	513	511	508	505
Brookside	473	396	347	340	365	362	365	371	380	394	387	394	403	409	416
Echo Lake	427	403	391	408	399	395	407	416	417	421	422	427	435	441	449
Highland Terrace	467	380	383	350	330	340	356	383	401	421	435	444	454	461	469
Lake Forest Park	506	449	438	426	393	378	369	358	364	361	376	384	392	399	405
Meridian Park	748	505	522	528	514	554	536	546	520	546	570	572	576	577	580
North City Overflow K	277														
Parkwood	455	377	390	421	409	425	442	452	454	461	462	481	501	519	537
Ridgecrest	514	450	440	451	447	445	454	449	490	521	536	531	528	523	518
Syre	485	446	428	471	464	425	401	383	340	337	337	343	351	356	362
Cascade K-8	142	133	133	140	122	130	130	131	131	135	137	140	143	145	147
H.M. EXC	91	115	80	68	90	78	78	78	79	81	83	84	86	87	89
Private Sp. Ed.	0	1	2	2	3	3	3	2	2	3	3	3	3	3	3
Totals	5109	4101	3984	4067	4004	4001	3996	4034	4057	4172	4262	4316	4382	4429	4480
Einstein	715	1131	1038	1014	998	1033	1038	1016	1048	1017	1009	1007	1047	1083	1104
Kellogg	663	991	977	982	1004	1018	1039	1042	1088	1062	1055	1042	1079	1116	1136
Cascade K-8	80	76	64	69	59	57	58	59	64	58	58	57	60	63	65
H.M. EXC	37	42	37	26	35	31	34	33	35	32	31	31	33	35	36
Private Sp. Ed.	3	3	4	4	2	2	2	3	3	3	3	3	3	3	3
Totals	1498	2243	2120	2095	2098	2141	2171	2153	2238	2172	2155	2139	2222	2299	2344
Shorecrest	1491	1452	1467	1480	1493	1514	1537	1547	1516	1576	1590	1599	1587	1564	1578
Shorewood	1504	1473	1505	1505	1528	1564	1573	1606	1563	1611	1616	1638	1641	1626	1647
H.M. EXC	0	0	0	0	0	0	0	0	0	0	0	0	0	0	0
Private Sp. Ed.	2	2	2	3	3	3	3	3	3	3	3	3	3	3	3
Totals	2997	2927	2974	2988	3024	3081	3112	3156	3081	3189	3208	3240	3230	3193	3228
Totals	9604	9271	9078	9150	9126	9223	9280	9344	9376	9533	9625	9694	9835	9921	10052

Shoreline School District

SY 2023-24 Student Population Density

