

WESTON, WI



Weston, Wisconsin is located in Central Wisconsin with easy access to Interstate 39. The greater Wausau area includes Wausau, Weston, Schofield, Rothschild, Rib Mountain, Kronenwetter, and Mosinee.

Weston to Green Bay: 1 hour 23 minutes
to Madison: 2 hours 10 minutes
to Eau Claire: 1 hour 35 minutes

Central Wisconsin Airport, CWA
Served by American, Delta and Avelo Airlines
Sixteen (16) minutes to airport.



CENTRAL WISCONSIN AIRPORT



[Visit Wausau](#)

CLICK HERE



Things to do

- Downhill skiing
- Museums
- Kayaking
- Sporting
- Theatre
- Family entertainment
- Outdoor pools



Restaurants

- Local
- National chains
- Supper clubs
- Within walking
- Grab & Go
- Sit and relax



Places to stay

- 2,200 + rooms
- 24 hotels nearby
- Bed & Breakfast



Shopping

- Local
- National
- Within walking



GRAND OPENING

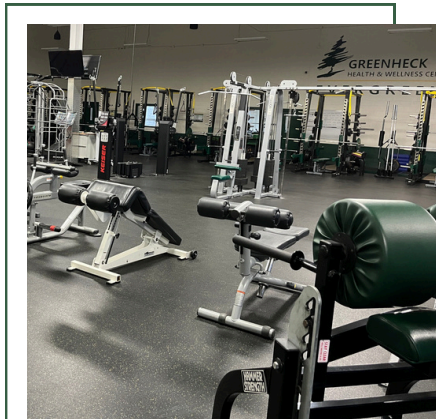
The new addition will be open for the public in August 2024.

The Greenheck Turner Community Center (GTCC) is a 135,000 square foot indoor turf facility, as an addition to the current Greenheck Field House, that will accommodate a full size field of 120 yards x 70 yards, walking lanes, jump pit, batting cages, and ample viewing spaces.

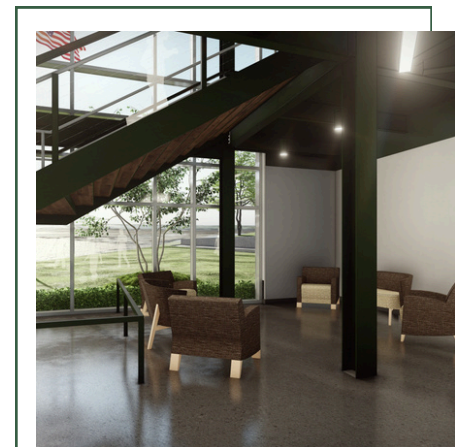
As a community center, it will include space for youth and high school activities such as soccer, football, lacrosse, softball, baseball, golf, track & field, band and dance. With ample space, GTCC offers a unique venue in which to host tournaments, camps, community events and individual user groups.

Reservations will fill quickly, so we encourage you to book events. We invite you to book events, meetings and turf time now for August 1, 2024-January 2026 timeframe. Most turf fields and meeting rooms will book out six months in advance for anything less than four hours. Many of our tournament bookings are booked for 2025/2026 season.

The Greenheck Turner Community Center is named after Mary Greenheck Turner who passed away in 2019. Her father Robert C. Greenheck and her husband Scott L. Turner along with Mary's three brothers Jim, Paul and Bobby have been supporters of the project from the very beginning. The Greenheck family supported the original Greenheck Field House which was built in 1997.



Construction began in October of 2022. The new turf facility is connected to the existing Greenheck Field House adjacent to the D.C. Everest Senior High.



PRICING

The D.C. Everest School District offers its facilities to the public for a fee. All reservations are coordinated through the Greenheck Turner Community Center. For rentals exceeding four (4) hours, we recommend arranging bookings with the Facility & Program Specialist to enhance the overall customer experience. Here are a few tips for scheduling:

- Explore the various time slots available at each facility for your chosen dates and times.
- Many organizations opt for reserving spacious practice areas to accommodate more than 10 individuals per hour effectively.
- Tournaments, combines, games and large events are welcome.



Fieldhouse Gym Courts

\$18 per court/hour (3 available)
Great for basketball/volleyball
Practice space for soccer, lacrosse, dance, softball/baseball and more.

Olympic Size Ice Sheet

\$145 Ice sheet/hour
Ice cuts are the last 10 min.
Four locker rooms available.
One changing room available.

Full Swing Sport Simulators

\$40/hour (2 available)
Engineered to the highest standard for golf and other great activities like football, zombie dodgeball, soccer, and softball.

Turf Fields *New in 2024*

\$100 per field/hour (4 available)
Each field is 30 X 70 yards.
Curtains will separate the fields.
Field lines are pre-painted on turf.
1,100 bleacher seats are available with an additional 1,000 + seats throughout the viewing area.

Sprint Lanes and Walking Lanes

A rubber track surrounds the turf fields and is available to rent for speed and agility training, sprinting, pole vault, and a long jump pit. The lanes can also accommodate portable bleachers for additional seating. Pricing based on availability and activity.

Meeting Rooms

\$25/hour (4 available)
All technology and large screens.
Rooms can accommodate 20-50 people based on set-up request and needs.

Outdoor Fields

Turf football field/stadium
Soccer fields
Softball/baseball fields

Other spaces available to rent

Theatre/Auditorium
Gyms- Junior/High/Middle School
Commons- High School
Fitness studio
Classrooms
Conference rooms
Pool


Fitness Center Memberships

Starting at only \$15/month
Open 7 days a week
Cardio, strength, free weights, personal trainers, group classes.



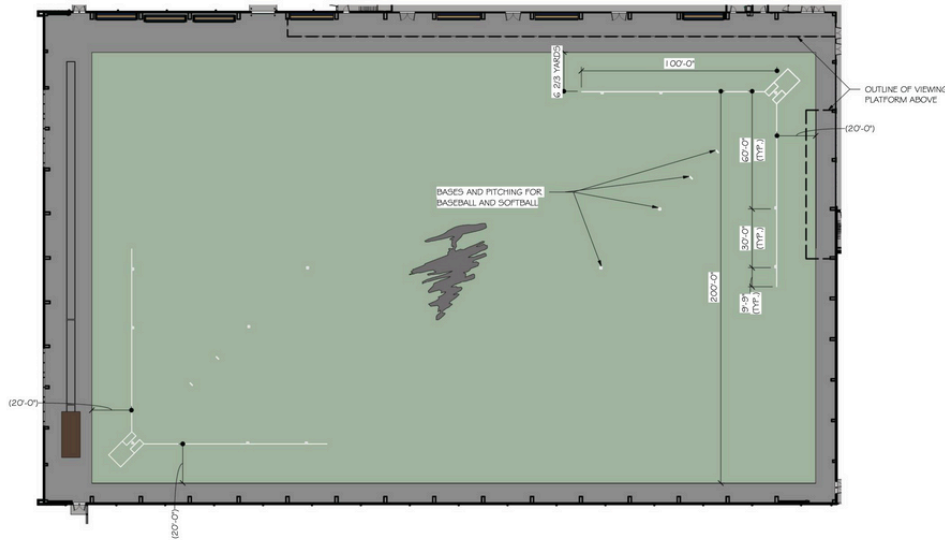
Scan to find additional information on rental spaces in the district.

CONTACT INFORMATION

 <http://gtcc.dce.k12.wi.us>
 amull@dce.k12.wi.us
 715-359-6563



FIELD OPTIONS



SOFTBALL FIELD LAYOUT -

Many options for turf fields.

Four (4) fields each 30 X 70 yards.

Walking lanes.

Bleacher seating.

Two softball fields.



Full size soccer field.



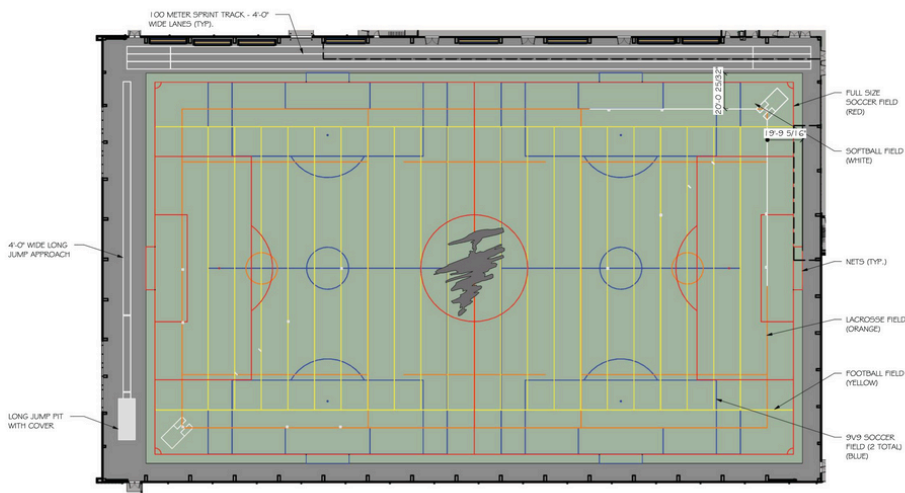
SOCCER FIELD LAYOUT -

Short sided soccer.

Baseball 12 and under.

Lacrosse fields.

Full size football field.



OPPORTUNITIES



TOURNAMENTS

TURF

ICE ARENA

MEETING ROOMS



**FIELD HOUSE
GYMS**

WALKING LANES

FITNESS CENTER

**GROUP FITNESS
STUDIO**

COMMUNITY PROGRAMMING



COMBINES **CLIMBING WALL**

CLINICS

**RACQUET BALL
COURTS**

REC SPORTS

SPORT SIMULATORS



WHO WE ARE

The Greenheck Turner Community Center is committed to meeting community needs by providing opportunities for all in areas of recreation, wellness, athletics, and social activities.



The original building has been used year-round for 26 years by athletic teams, community events, school-based classroom groups, the Boys & Girls Club, various youth programs and sporting leagues.

The space is also used for special events such as the community halloween event, craft show, and art shows.

Greenheck Field House was originally constructed for ice hockey, figure skating, and speed skating. Over time, it has evolved into a community center that is home to a thriving youth recreation department, engaging hundreds of children. Programs run throughout the year, providing affordable options and a variety of sports activities. During the recent summer, the outdoor soccer program had 852 participants. REC sports also collaborates on clinics, camps, and youth leagues.



The Greenheck Turner Community Center features a versatile concession stand offering hot meals and convenient ready-to-eat items. Additionally, the Youth and Family Programming Department organizes various activities such as birthday parties, public ice skating sessions, rock wall climbs, and bounce house events. Throughout the year, the center hosts community events during holidays and school breaks, including Adventure Care and Summer Camp for children.

