

# Pine-Richland High School

700 Warrendale Road, Gibsonsia, PA 15044



## PINE-RICHLAND HIGH SCHOOL



Phone: 724-625-4444

Fax: 724-625-4640

[www.pinerichland.org](http://www.pinerichland.org)

District Enrollment – 4,539

High School Enrollment – 1,440

ACT/CEEB Code – 391512

Accreditation: Middle States Association of Colleges and Secondary Schools

### Administration

Dr. Brian Miller  
*Superintendent*

Dr. Michael Pasquinelli  
*Assistant Superintendent for  
Secondary Education & Curriculum*

Dr. Kristen Justus  
*Assistant Superintendent for  
Elementary Education & Curriculum*

Dr. Nancy Bowman  
*Principal*

Dr. Frank Hernandez  
*Assistant Principal*

Mrs. Gina Mahouski  
*Assistant Principal*

Dr. Stephanie Svilar  
*Assistant Principal*

### Counseling Staff

Mr. Anthony Rock, ext. 1657  
*School Counselor (students A-D)*  
[arock@pinerichland.org](mailto:arock@pinerichland.org)

Mrs. Jennifer Bowers, ext. 1652  
*School Counselor (students E-K)*  
[jbowers@pinerichland.org](mailto:jbowers@pinerichland.org)

Mrs. Toni Filipowski, ext. 1653  
*School Counselor (students L-R)*  
[tfilipowski@pinerichland.org](mailto:tfilipowski@pinerichland.org)

Mrs. Leslie Straub, ext. 1655  
*School Counselor (students S-Z)*  
[lstraub@pinerichland.org](mailto:lstraub@pinerichland.org)

Ms. Olivia Hess, ext. 1674  
*Transition Coordinator*  
[ohess@substitutes.pinerichland.org](mailto:ohess@substitutes.pinerichland.org)

Mrs. Jean Whalen, ext. 1654  
*Director of College and Career Counseling*  
[jwhalen@pinerichland.org](mailto:jwhalen@pinerichland.org)

### PRHS Professional Staff

Grades 9-12.....108  
Master's Degree.....49%  
Master's Plus 15-45 credits .....13%  
Doctorate .....2%

### Our Community

The Pine-Richland School District, located in the north central part of Allegheny County, serves the communities of Pine and Richland townships. Because of its proximity to the City of Pittsburgh, the community has grown tremendously over the last twenty years and continues to prosper. District residents enjoy residential living with easy access to both urban and rural attractions. Pine-Richland is proud of its schools, which serve as the centers of our communities.

### Our Mission

Our mission is to focus on learning for every student every day.

### Our Vision

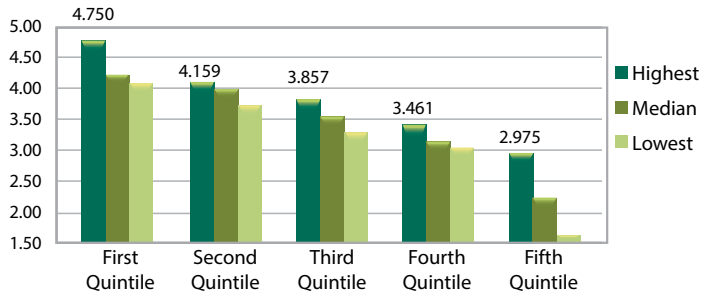
Learning is our primary purpose. Learning occurs inside and outside the classroom. Learning is measured as BOTH achievement AND growth. Learning happens differently for different people so flexibility and variation is needed in the approach. Learning requires effort and persistence. Learning is for all of us and requires the support of everyone (e.g., student, staff, and parents).

### \* Class of 2021 Post-Secondary Plans – 378 Students

College/University Programs .....	88%	Technical/Career Education .....	3%
<ul style="list-style-type: none"> <li>79% matriculated to a 4 year college or university</li> <li>9% matriculated to a 2 year college</li> </ul>		Employed/Undecided/ Did Not Complete Survey.....	8%
		Military .....	1%

### Class of 2022 Cumulative GPA

Cumulative Quality Point Average (360 students ranked • 6 semesters)



Highest GPA in Class of 2022 ..... 4.750

### Explanation of Transcript

**School Calendar:** The PRHS school year consists of four quarters, each nine weeks in duration. Classes meet for either 18 weeks (1 semester) or 36 weeks (2 semesters), 5 days a week, 42 minutes per day.

**Course Placement:** Placement in each subject is guided by student achievement and teacher recommendation.

**Grade Point Average:** Student grade point averages are calculated by assigning a weight to each numerical grade on all courses carrying credit. An additional 0.5 is assigned for Honors courses and an additional 1.0 is assigned for Advanced Placement and CHS courses. To calculate GPA, the sum of the weights of each grade is divided by number of credits attempted.

**Grading Scale:** A = 90-100%, B = 80-89%, C = 70-79%, D = 60-69%, F = <60%, Passing Grade = D.

**Class Rank:** Reporting of class rank is by request.

**\* COVID-19 Statement:** PRHS students were able to choose between a 100% virtual or a hybrid learning option for the 2020-2021 school year. There was no difference in course designation or grading for online learning or live instruction. Student transcripts reflect our traditional grading system.

<b>2021 PRHS SAT</b>	<b>SAT Mean Scores</b>	<b>Evidence-Based Reading and Writing</b>				<b>Math</b>
	Pine-Richland	605				614
	Pennsylvania	566				557
	National	533				528
<b>2021 PRHS ACT</b>	<b>ACT Average</b>	<b>English</b>	<b>Math</b>	<b>Reading</b>	<b>Science</b>	<b>Composite</b>
	Pine-Richland	27.2	27.2	27.2	26.5	27.2
	Pennsylvania	24.8	24.3	25.8	24.5	25.0
	National	19.6	19.9	20.9	20.4	20.3
<b>National Merit Scholars</b>	Class of 2021: 5 National Merit Finalists, 16 Letters of Commendation					
<b>College in High School</b>	We collaborate with local colleges to provide the following courses at Pine-Richland High School: Business Calculus, Statistics, Physics, Communications: Argument and Rhetoric, and Advanced Computer Science.					
<b>Advanced Placement</b> All students enrolled in Advanced Placement courses are required to take the Advanced Placement Exam.	In May 2021, 1,108 Advanced Placement tests were taken in 25 subject areas. Students earned scores of 5 on 202 tests, 4 on 288 tests and 3 on 302 tests.					
	AP courses offered at PRHS include: <ul style="list-style-type: none"> <li>American Government &amp; Politics</li> <li>Art History</li> <li>Biology</li> <li>Calculus AB</li> <li>Calculus BC</li> <li>Chemistry</li> <li>Computer Science A</li> <li>English Language &amp; Composition</li> <li>English Literature &amp; Composition</li> <li>Environmental Science</li> <li>European History</li> <li>French Language</li> <li>German Language</li> <li>Microeconomics</li> <li>Physics C</li> <li>Psychology</li> <li>Spanish Language</li> <li>Statistics</li> <li>Studio Art</li> <li>U.S. History</li> </ul>					
<b>Graduation Credit Requirements for the Class of 2021 24 Credits</b>	<b>Credits</b>	<b>Subject</b>	<b>Credits</b>	<b>Subject</b>		
	4	English	1	Health/Physical Education		
	3	Social Studies	1	Core Flexible Academic (Math, Science, or Social Studies)		
	3	Science	9	Electives		
	3	Mathematics				
<b>Extra-Curricular Activities</b>	The following is a partial list of student activities at PRHS. The marching band currently meets as a co-curricular class earning credit.					
	Audio/Visual - PRTV Best Buddies Foreign Exchange Program	Forensics Future Business Leaders of America Inkwell (Literary Magazine)	Key Club Model United Nations National Honor Society Peer-to-Peer	Student Government Technology Student Association Tri-Rivers Fencing Club		
<b>Student Recognition in the Arts at PRHS</b>	Pine-Richland High School students earned top awards in the Scholastic Regional Art Awards program including one American Visions Best of Show award, eight Gold Key awards, 20 Silver Key awards, and 31 honorable mention awards for individual works. Three Pine-Richland High School students were selected to the Pennsylvania Music Educators Association (PMEA) All-State Choir, and one student was chosen for the PMEA All-State Wind Ensemble. Students also represent PRHS at regional choir, orchestra, and band programs each year.					
<b>Interscholastic Athletics</b>	Baseball	Cross-Country	Gymnastics	Soccer	Tennis	
	Basketball	Field Hockey	Ice Hockey	Softball	Track & Field	
	Cheerleading	Football	In-Line Hockey	Swimming/Diving	Volleyball	
	Crew	Golf	Lacrosse	Wrestling		
<b>State &amp; National Recognition</b>	<i>US News &amp; World Report</i> ranked PRHS fifth in Allegheny County and 25th in the state in its "Top High School" rankings for 2021. In addition, the report ranked PRHS 853 out of 24,000 public schools across the U.S. <i>The Pittsburgh Business Times</i> ranked PRSD eighth in the region in 2021 based on examining 10 years of scores from the Pennsylvania System of School Assessments and Keystone exams in its "Decade of Excellence" rankings.					