



Pine-Richland High School

700 Warrendale Road, Gibsonia, PA 15044



PINE-RICHLAND HIGH SCHOOL



Phone: 724-625-4444

Fax: 724-625-4640

www.pinerichland.org

District Enrollment – 4,533

High School Enrollment – 1,443

ACT/CEEB Code – 391512

Accreditation: Middle States Association of Colleges and Secondary Schools

Administration

Dr. Brian Miller
Superintendent

Dr. Michael Pasquinelli
*Assistant Superintendent for
Secondary Education & Curriculum*

Dr. Kristen Justus
*Assistant Superintendent for
Elementary Education & Curriculum*

Dr. Frank Hernandez
Principal

Mr. Michael Barlak
Assistant Principal

Mr. Jacob Cawley
Assistant Principal

Mrs. Tracy Kuchnicki
Assistant Principal

Counseling Staff

Ms. Mary Kate Opferman, ext. 1657
School Counselor (students A-D)
mopferman@pinerichland.org

Ms. Natalia Steen,, ext. 1652
Substitute Counselor (students E-K)
nsteen@pinerichland.org

Mrs. Toni Filipowski, ext. 1653
School Counselor (students L-R)
tfilipowski@pinerichland.org

Mrs. Leslie Straub, ext. 1655
School Counselor (students S-Z)
lstraub@pinerichland.org

Mrs. Jocelyn Secen, ext. 1674
Transition Coordinator
jsecen@pinerichland.org

Mrs. Jean Whalen, ext. 1654
Director of College and Career Counseling
jwhalen@pinerichland.org

PRHS Professional Staff

Grades 9-12108
Master's Degree49%
Master's Plus 15-45 credits13%
Doctorate2%

Our Community

The Pine-Richland School District, located in the north central part of Allegheny County, serves the communities of Pine and Richland townships. Because of its proximity to the City of Pittsburgh, the community has grown tremendously over the last twenty years and continues to prosper. District residents enjoy residential living with easy access to both urban and rural attractions. Pine-Richland is proud of its schools, which serve as the centers of our communities.

Our Mission

Our mission is to **focus on learning for every student every day.**

Our Vision

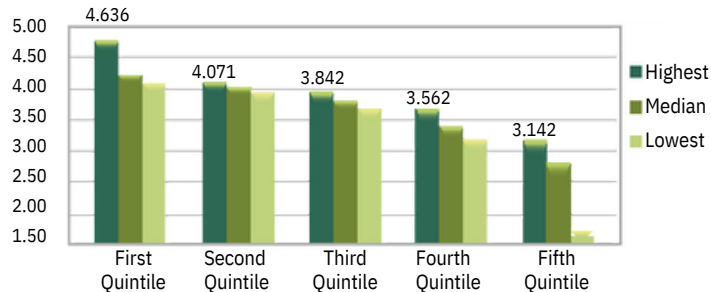
Learning is our primary **purpose**. **Learning** occurs **inside** and **outside** the classroom. **Learning** is **measured** as BOTH **achievement** AND **growth**. **Learning** happens **differently** for **different** people so **flexibility** and **variation** is needed in the approach. **Learning** requires **effort** and **persistence**. **Learning** is for all of us and requires the **support** of **everyone** (e.g., student, staff, and parents).

*Class of 2023 Post-Secondary Plans – 335 Students

College/University Programs88%	Technical/Career Education2%
• Matriculated to a 4 year college or university83%	Employed/GAP/Undecided.....9%
• Matriculated to a 2 year college5%	Military1%

Class of 2024 Cumulative GPA

Cumulative Quality Point Average (334 students ranked • 6 semesters)



Highest GPA in Class of 20244.636

Explanation of Transcript

School Calendar: The PRHS school year consists of four quarters, each nine weeks in duration. Classes meet for either 18 weeks (1 semester) or 36 weeks (2 semesters), 5 days a week, 42 minutes per day.

Course Placement: Placement in each subject is guided by student achievement and teacher recommendation.

Grade Point Average: Student grade point averages are calculated by assigning a weight to each numerical grade on all courses carrying credit. An additional 0.5 is assigned for Honors courses and an additional 1.0 is assigned for Advanced Placement and CHS courses. To calculate GPA, the sum of the weights of each grade is divided by number of credits attempted.

Grading Scale: A = 90-100%, B = 80-89%, C = 70-79%, D = 60-69%, F = <60%, Passing Grade = D.

Class Rank: Reporting of class rank is by request.

***COVID-19 Statement:** PRHS students were able to choose between a 100% virtual or a hybrid learning option for the 2020-2021 school year. There was no difference in course designation or grading for online learning or live instruction. Student transcripts reflect our traditional grading system.

2023 PRHS SAT	SAT Mean Scores	Evidence-Based Reading and Writing			Math	
	Pine-Richland	602			607	
	Pennsylvania	547			531	
	National	520			508	
2023 PRHS ACT	ACT Average	English	Math	Reading	Science	Composite
	Pine-Richland	25.7	25.8	26.1	26.0	26.0
	Pennsylvania	23.6	23.2	24.7	23.6	23.9
	National	18.6	19.0	20.1	19.6	19.5
National Merit Scholars	Class of 2023: 4 Merit Finalists, 16 Letters of Commendation					
College in High School	We collaborate with local colleges to provide the following courses at Pine-Richland High School: Business Calculus, Statistics, Physics, and Communications: Argument and Rhetoric.					
Advanced Placement	In May 2023, 1,001 Advanced Placement tests were taken in 23 subject areas. Students earned scores of 5 on 216 tests, 4 on 290 tests and 3 on 257 tests.					
All students enrolled in Advanced Placement courses are required to take the Advanced Placement Exam.	AP courses offered at PRHS include:					
	<ul style="list-style-type: none"> American Government & Politics Art History Biology Calculus AB Calculus BC Chemistry Computer Science A 	<ul style="list-style-type: none"> English Language & Composition English Literature & Composition Environmental Science European History French Language German Language Microeconomics 	<ul style="list-style-type: none"> Physics C Psychology Spanish Language Statistics Studio Art U.S. History 			
Graduation Credit Requirements for the Class of 2024	Credits	Subject	Credits	Subject		
	4	English	1	Health/Physical Education		
	3	Social Studies	1	Core Flexible Academic (Math, Science or Social Studies)		
	3	Science	9	Electives		
	3	Mathematics				
Extra-Curricular Activities	The following is a partial list of student activities at PRHS. The marching band currently meets as a co-curricular class earning credit.					
	Audio/Visual—PRTV	Future Business Leaders of America	Peer-to-Peer			
	Best Buddies	Inkwell (Literary Magazine)	Student Government			
	Foreign Exchange Program	Key Club	Technology Student Association			
	Forensics	Model United Nations	Tri-Rivers Fencing Club			
		National Honor Society				
Student Recognition in the Arts at PRHS	A PRHS student earned a Gold Medal as well as an American Visions Medal in the National Scholastic Art Awards Competition. Eighteen Pine-Richland High School art students won 61 awards in the regional Scholastic Art Awards, while four students won gold and silver key awards and honorable mentions in the regional Scholastic Writing Awards. Twenty-five students represented Pine-Richland in a number of Pennsylvania Music Educators Association (PMEA) band, choir and orchestra programs.					
Interscholastic Athletics	Baseball	Cross-Country	Gymnastics	Soccer	Track & Field	
	Basketball	Field Hockey	Ice Hockey	Softball	Volleyball	
	Cheerleading	Football	In-Line Hockey	Swimming/Diving	Wrestling	
	Crew	Golf	Lacrosse	Tennis		
State & National Recognition	<i>US News & World Report</i> ranked PRHS 7th in the Pittsburgh metropolitan area and 26th in the state in its 2023-2024 high school rankings, as well as 863 out of 25,000 public high schools in the United States. The Pittsburgh Business Times ranked Pine-Richland School District 9th in southwestern Pennsylvania based on Keystone and PSSA scores from 2022, 2021 and 2019 in its <i>2023 Guide to Southwestern Pennsylvania Schools</i> .					