



Avonworth Middle/High School Renovation/Construction Project Presentation to HS Students

Dr. Hadley
April 25, 2024



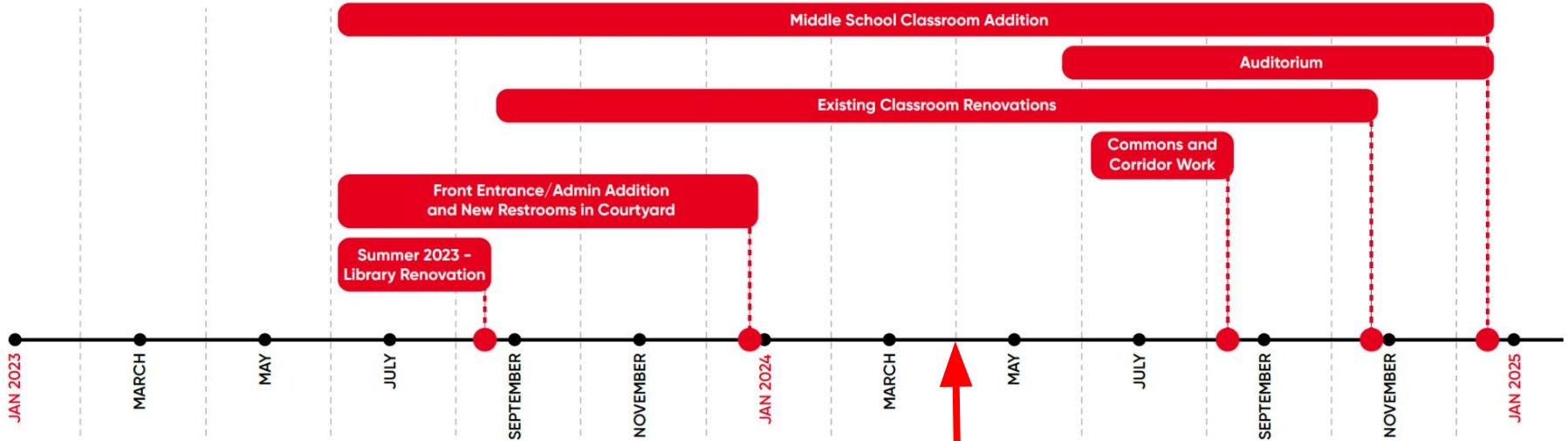
Thank you!





Project Schedule

Construction Schedule



Project Status as of April 1, 2024

Project Schedule

- Summer 2024 - **Campus Closed!**
 - Auditorium Renovation Begins
 - MS Addition Construction Continues
 - HS Corridors will be Completed
 - Cafeteria/Commons Completed
 - Sitework will be Completed
 - Sidewalks; Paving; Sidewalks; Trees; Shrubs; etc.
- 24-25 School Year Start Date - ***September 3, 2024!***
 - Enjoy the long summer!



Common Questions Received

Modern School Design

Learning spaces: Biophilic design in schools

LONG READS ▾

Authors: [Sarah Scott](#)

Aug 24, 2020

[Share f](#) [Tweet t](#) [Post in](#) [Email e](#) [Print p](#)



[Article](#)

A biophilic interior is created by:

- maximising natural light
- having windows with views of the sky and trees
- using natural materials and textures in the internal and external
- providing access to landscaped settings, as both retreat spaces and communal areas
- using programmed temperature changing LED and full spectrum lighting;
- having controlled framed views of the external natural features available; and,
- building internal landscapes

Biophilic Design Components



These lights seem bright!



Specifications in Architect's Drawings:

- Regular Setting: 100%
- Dim Setting: 50%

Classroom Without an Exterior Window

- Regular On Setting: 40%
- Dim Setting: 10%
- 3rd Option - High Setting: 60%

Classroom With an Exterior Window

- Regular On Setting: 30%
- Dim Setting: 10%
- 3rd Option - High Setting: 60%

Updates were made over spring break!

Modern School Design



Safer K-12 Design: School Should Feel – and Look – Like School

by BECKY BRADY

Design, K-12



[Article](#)

What happened to the lockers?



DEEP DIVE

How lockerless schools are shaping building design

As locker popularity wanes, schools are removing them and finding other uses for the spaces; educators and parents note an end of an era.

Published Feb. 20, 2024



Kara Arundel
Senior Reporter



[Article](#)



Before



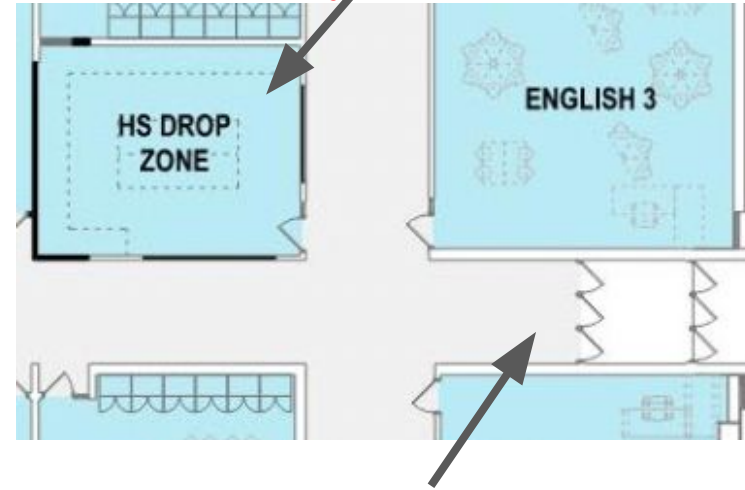
After

Goal: Wider hallways for our growing student population and more comfortable transitions during the school day!

Locker Considerations and Storage Options



Monitored by Cameras



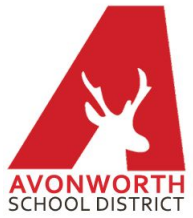
Drop-off/Pick-Up
Entrance/Exit

It looks so bland! We agree!



There are still a lot of finishes to be completed!

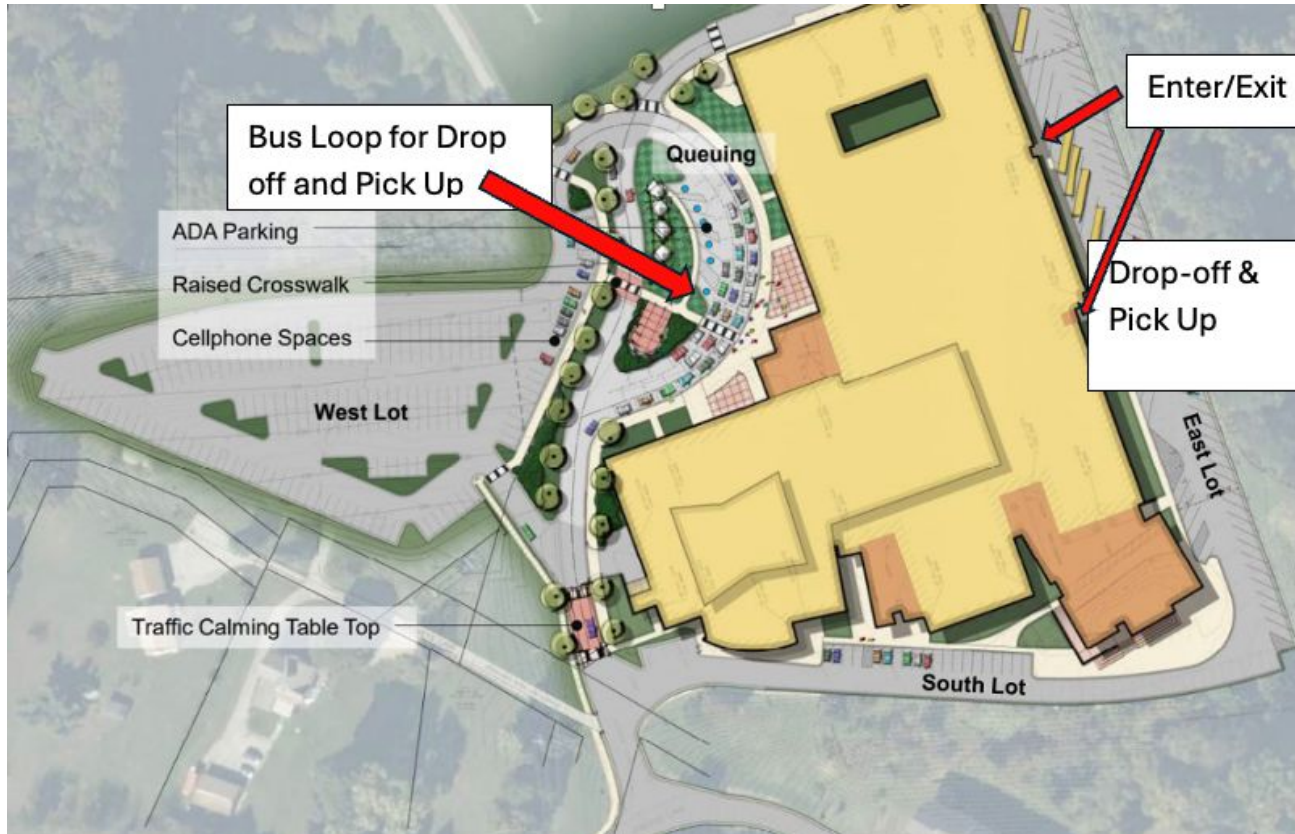
What happened to the courtyard and why?



**Will this
change in the
future?**

YES!

Drop-Off and Pick-Up (once completed)





What to expect next school year?



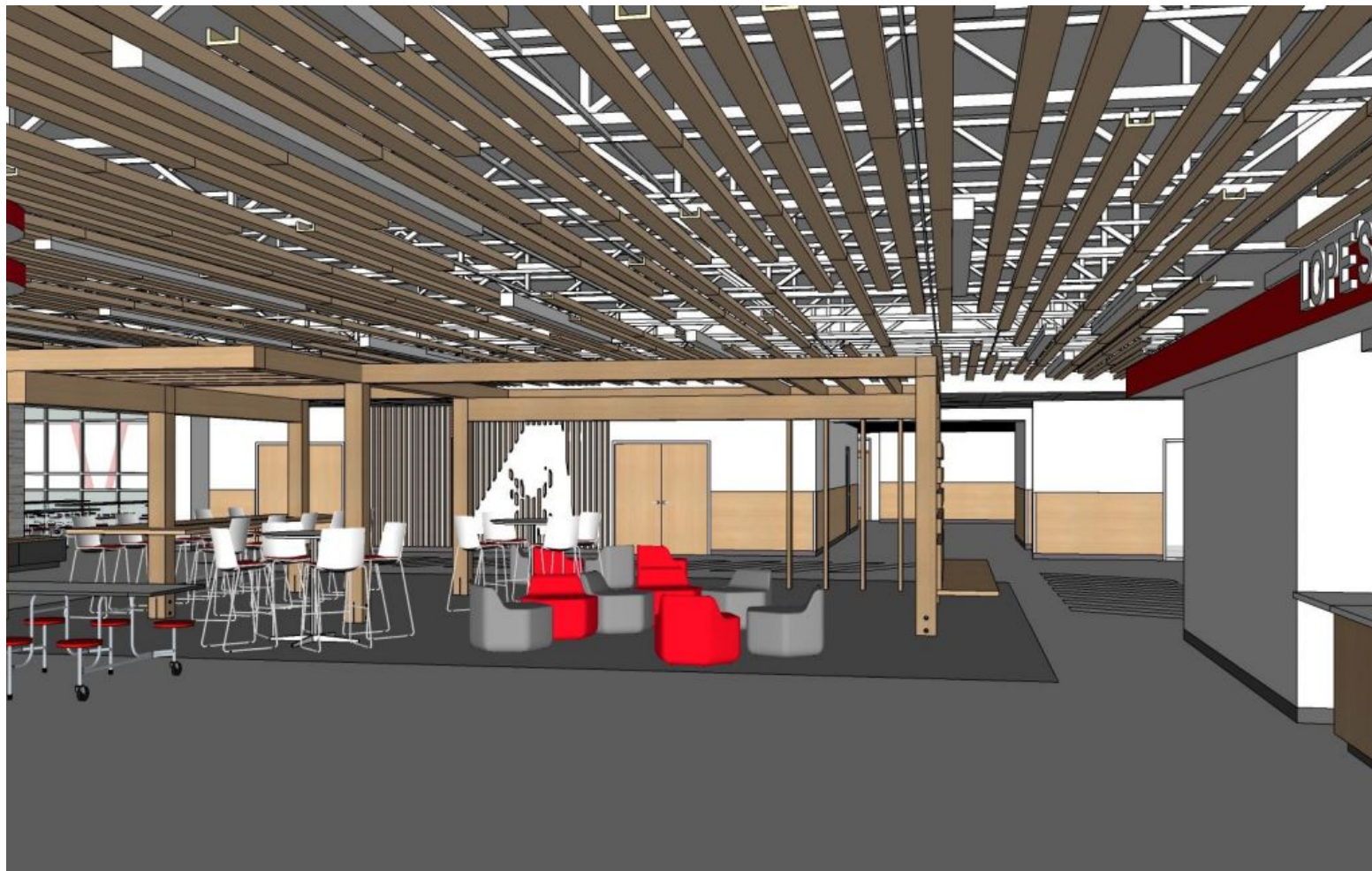
Renovated Commons/Cafeteria



Renovated Commons/Cafeteria



Renovated Commons/Cafeteria



Renovated Commons/Cafeteria



Renovated Commons/Cafeteria & New Auditorium Entrance



Library Concept



Library Concept



Flex Collaboration/Learning/Open Mod Spaces



The secondary building will now have one main entrance and office for the middle and high school.



Let's Peek Inside the New Middle School



Avonworth Middle School Learning Stairs



Satellite Middle School Library Under the Learning Stairs



Satellite Middle School Library Under the Learning Stairs



Collaboration Space Outside of a Sixth Grade Classroom



Sample Middle School Classroom Rendering



Sixth Grade Floor





Overhead View of the Middle School Learning Stairs



Thank
you!

