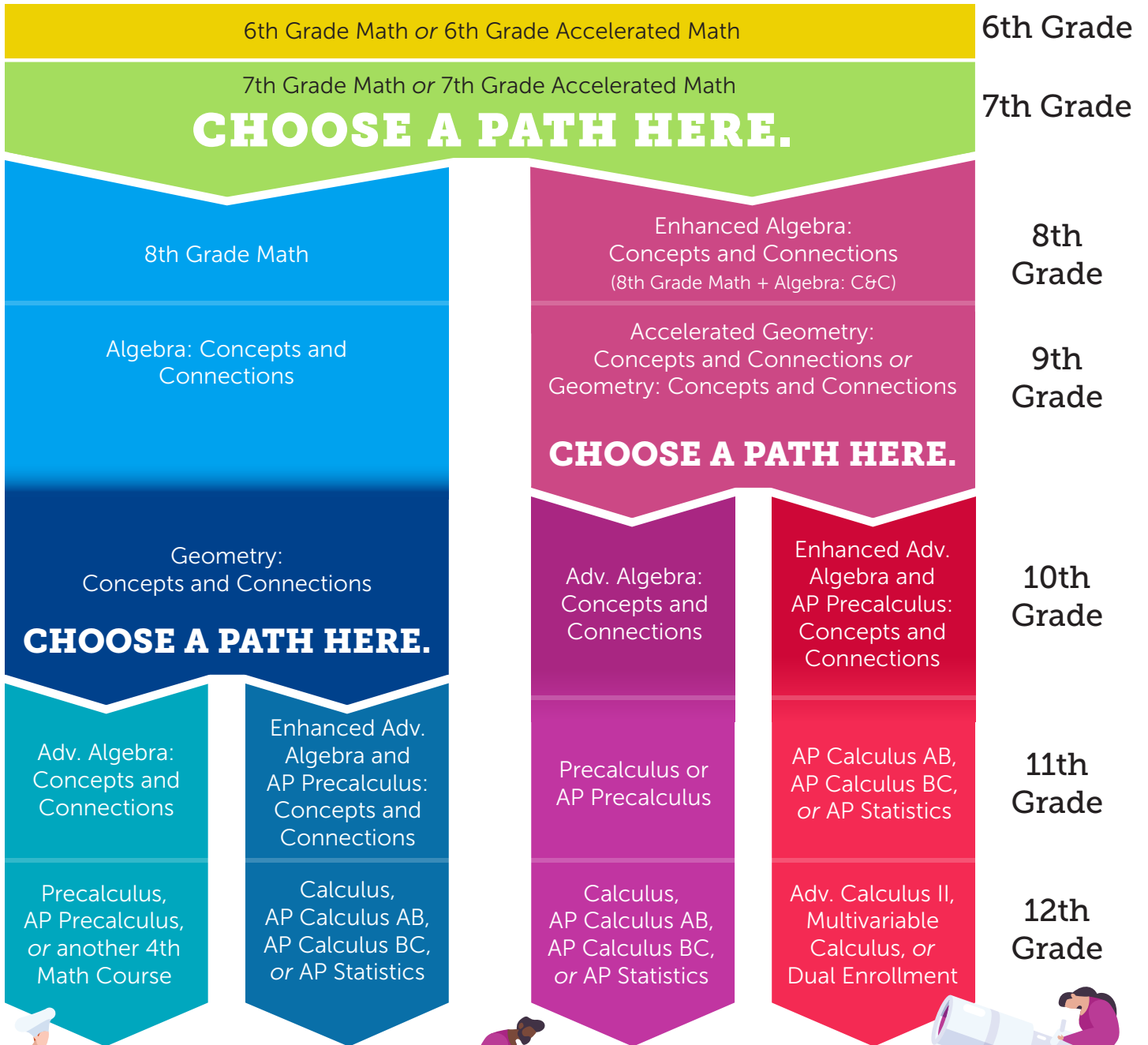


Choose YOUR Math Path

The GCPS mathematics curriculum, aligned with the Georgia Department of Education (GaDOE) standards, is designed to give you the tools you need to achieve your goals. As you make plans for your future, you can choose the math path that will help you on your journey, and alter your path to accomplish your unique goals.



Frequently-asked questions about the math sequence

How is the new math sequence different from the math courses GCPs students take now?

Using our current math sequence, students choose a standard or accelerated path in 6th grade and that path determines the projection of their high school courses. The new math sequence gives students the opportunity to make an additional choice in high school about which sequence best aligns with their goals.

Will the new sequence affect students in K–5?

No. There won't be changes to the math sequence in grades K–5.

How will I know which path is best suited to my child's career goals?

The math pathways are designed to help students achieve their unique postsecondary goals. Students interested in STEM fields are encouraged to select a pathway that allows them to take Calculus by 12th grade or before. In addition to considering career options, students and their families should be aware that colleges and universities may have different admission requirements for specific math courses. Students are encouraged to discuss which math pathway best meets their goals with their school counselors.

What is the difference between "accelerated" and "enhanced"?

Students enrolled in an accelerated mathematics course should expect to learn about a year and a half worth of content within one school year. AKS will include both on grade level content as well as thoughtfully paired AKS from the grade level above.

When students take an enhanced mathematics course, they will learn two full mathematics courses within one year. For instance, students enrolled in Enhanced Algebra: Concepts and Connections (8th Grade Math + Algebra: C&C) will take all of 8th grade mathematics as well as all of Algebra: Concepts and Connections.

If I miss the selection period in the 7th grade, will a path be chosen for my child? Who makes that choice, and how do they decide?

Local schools will work with you to determine the best placement for your student in mathematics. This recommendation will take into account your child's performance in mathematics class, Milestones data, Universal Screener data, and the teacher's assessment.

If we missed the opportunity to choose a path before 8th grade, do we have to wait until the end of 9th grade to choose again?

Students will have a second opportunity to choose a math pathway in high school based on the course they selected in 8th grade.

If a student selected 8th grade mathematics in 8th grade, they will first complete Algebra: Concepts and Connections and Geometry: Concepts and Connections before deciding in 10th grade whether to choose a pathway toward a different high school 4th math course or Calculus.

For students who took Enhanced Algebra: Concepts and Connections (8th Grade Math + Algebra: C&C) in 8th grade, they will decide in 9th grade whether to take Advanced Algebra: Concepts and Connections or Enhanced Advanced Algebra and Precalculus: Concepts and Connections. At this point, students will be deciding if they want to take Calculus in 12th grade or 11th grade.

My child struggles in math, and these options all seem too advanced. Are there any alternatives?

Algebra: Concepts and Connections, Geometry: Concepts and Connections, Advanced Algebra: Concepts and Connections, and one additional 4th high school math course are required for graduation in Georgia. Students can work with their local school counselors to choose which 4th math course might best meet their postsecondary interests; as well as what supplemental curriculum options and tutoring are available to help meet the graduation requirements.

Will students need to be tested to see if they're ready to take the enhanced path?

No. Schools will consult with students and families, using classroom performance, Milestones and Universal Screener data, and teacher input to determine if a student is a good candidate for an Enhanced course sequence.

If we choose a path that proves to be too challenging, will my child have access to support until they are able to switch again?

Students and families can work with their local school to get more support if a student is not experiencing success in their current mathematics class. Your child's teacher can best address learning needs and make recommendations for appropriate placement and supports.

Choose the Math Path that's right for you!

