



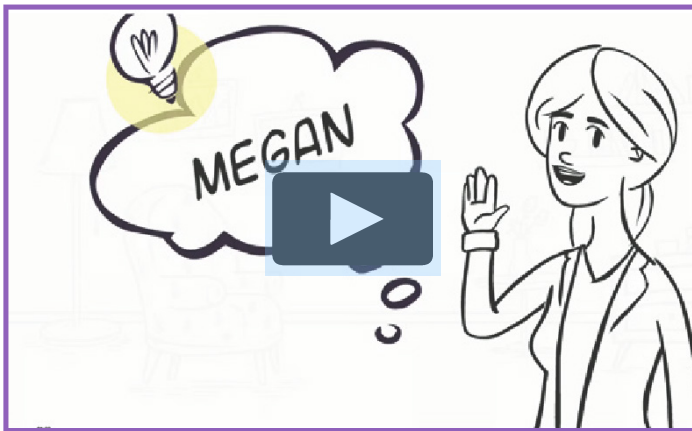
Geary County USD 475 Medi-Bridge Gap Plan

Enjoy lower out-of-pocket costs with the Medi-Bridge Gap Plan

As part of our ongoing effort to lower out-of-pocket costs for our employees, we are excited to announce the addition of the Medi-Bridge Gap Plan to our benefits offering. This supplemental medical insurance plan works alongside your major medical health plan to provide additional savings.

The coverage is automatically included. There is no additional paperwork and no applications. Plus, **Claims Advocacy** is provided. The Gap plan coordinates with your major medical plan and helps you and your family pay for deductibles and out-of-pocket expenses for inpatient and outpatient treatment.

Please watch the short explainer video below to learn more about the plan and how easy it is to use.



The Plan Covers:

- | | |
|-------------------|------------------------------|
| MRIs and CT Scans | Hospital Outpatient Facility |
| Inpatient Stays | Diagnostic Facility Lab |
| Surgery Hospital | Facility |
| Emergency Room | Drug & Mental Health Rehab |

Claims are paid directly to the provider on your behalf for a seamless healthcare experience.

Best of all, the Medi-Bridge Gap Plan is simple to use. Simply present your Gap Plan ID card with your insurance card anytime you visit a medical provider. That's it! It works just like any other medical ID card.

Enrollment is simple,
straightforward, and easy.

Bay Bridge Administrators

Medi-Bridge GAP
A Supplemental Health Plan