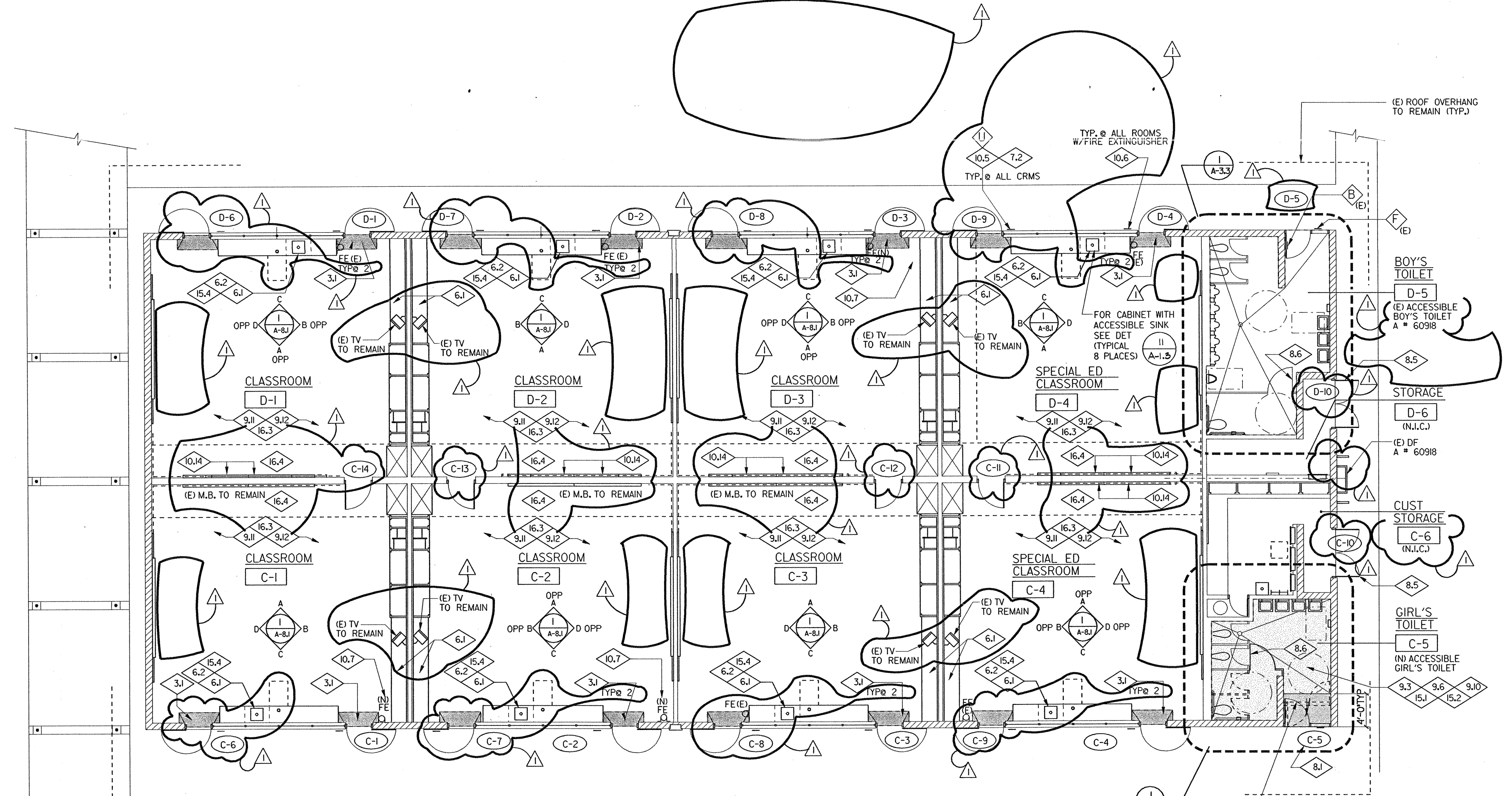


FORMERLY KNOWN AS C-1

CLASSROOM BUILDING - "A - B"

SCALE 1/8" = 1'-0"



FORMERLY KNOWN AS C-2

CLASSROOM BUILDING - "C - D"

SCALE 1/8" = 1'-0"

CONSTRUCTION KEY NOTES:

DIVISION 2: SITEWORK

- 2.1 NEW ACCESSIBLE PEDESTRIAN CROSSING PAVEMENT MARKING. SEE SITE PLAN AND DETAIL: 2/A-1.2
- 2.2 PATCH EXISTING ASPHALT PAVING AFTER PLACING NEW ACCESSIBLE SIGNS WITH CONCRETE PAD.
- 2.3 FOUR NEW CONC. SLAB PER DETAIL: 18/A-1.2.
- 2.4 NEW ACCESSIBLE CONC. CURB RAMP AND WALK. SEE DETAIL: 3/A-1.2
- 2.5 NEW ACCESSIBLE PARKING STRIPE MARKINGS. DET: 16/A-1.2
- 2.6 RELOCATE EXISTING CONCRETE WHEELSTOP. DETAIL: 2/A-1.2
- 2.7 MODIFY EXISTING IRRIGATION SYSTEM AS REQUIRED AT THIS AREA.
- 2.8 FURNISH NEW SIGN PER SITE PLAN. MOUNT ON EXISTING GATE POSTS FOR ADITT. INFORMATION.
- 2.9 POUR (N) CONC. PAD PER DET. 2/A-1.3

DIVISION 3: CONCRETE

- 3.1 REVISE EXISTING CONCRETE THRESHOLD PER DET. 8/A-7.2
- 3.2 POUR (N) CONC. CURB PER DET. 13/A-7.2

DIVISION 6: WOOD AND PLASTIC

- 6.1 PROVIDE PLASTIC LAMINATE COUNTERTOP INCLUDING CUTOFF FOR NEW SINK, COVER REAR AND END-SPLASH.
- 6.2 NEW BASE CABINETS WITH ACCESSIBLE SINK. FINISH ALL EXPOSED EDGES WITH PLASTIC LAMINATE. SEE INTERIOR ELEVATIONS.
- 6.3 ENLARGE (E) DOOR OPENING PER DET. 3/A-8.2.
- 6.4 PROVIDE CABINET FILLER PANEL AS REQUIRED. MATCH FINISH TO ADJACENT SURFACES.
- 6.5 PROVIDE NEW TALL CABINET DOORS TO EXISTING CABINET W/PLASTIC FINISH & CABINET HARDWARE.
- 6.6 NEW 2X @ 16" O.C. WOOD WALL. DETAIL: 13/A-8.2.

DIVISION 7: THERMAL AND MOISTURE PROTECTION

- 7.1 NEW 1/4" THK TEMPERED HIGHLY TINTED GLAZING IN (E) ALUMINIUM FRAMED WINDOW. RE: NOTES 4 & 5 OF THIS SHT.
- 7.2 PROVIDE NEW ALUM. COMPOSITE PANEL IN EXIST. WINDOW FRAME BY EXIT DOORS. COLOR AS PER COLOR BOARD. LOCATED AT DISTRICT'S OFFICE. VERIFY COLOR BOARD NUMBER.
- 7.3 CLOSE WATERTIGHT EXISTING AND NEW ROOF VENT OPENINGS. FINISH TO MATCH EXISTING ROOF SURFACES.

DIVISION 8: DOORS AND WINDOWS

- 8.1 PROVIDE NEW H.M. FRAME WITH NEW 3'-0" WIDE DOOR AND FIXED SIDE PANEL, METAL LOUVER AND REMOVABLE BIRD SCREEN. SEE DOOR SCHEDULE ON SHT. A-7.1
- 8.2 ENTIRE DOOR ASSEMBLY TO REMAIN. REPLACE THRESHOLD AND FLOOR TRANSITION ONLY. SEE DETAIL: 7/A-7.2
- 8.3 NOT USED
- 8.4 NOT USED
- 8.5 PROVIDE NEW DOOR FRAME AND DOOR WITH HARDWARE PER DOOR SCHEDULES.
- 8.6 HANDLE IMMEDIATELY BELOW THE LATCH. THE LATCH MUST BE FLIP-OVER EQUIP ACCESS. TOILET COMP. DOORS BOTH SIDE WITH A "U"-SHAPED OR SLIDING TYPE. ALSO PROV. A COAT HOOK ON THE INSIDE OF COMP. DOOR @ 48" A.F.F. TO THE CENTER OF HOOK.
- 8.7 LUBRICATE GUIDES AND REPAIR/REPLACE WINDOW HARDWARE AT ALL OPERABLE WINDOW AS REQUIRED.
- 8.8 PROVIDE NEW CASED OPENING PER DOOR SCHEDULE.

DIVISION 9: FINISHES

- 9.1 REPAIR EXIST. INTERIOR PORTLAND CEMENT PLASTER. MATCH AND ALIGN WITH ADJACENT SURFACES.
- 9.2 NEW 7/8" THICK INTERIOR CEMENT PLASTER FINISH OVER PAPER BACKED LATH. SEE SPECS.
- 9.3 NEW CER. TILE BASE AND FLOOR. SEE SPECS & DET. 2/A-8.2.
- 9.4 REPLACE EXISTING CER. TILE BASE AND FLOOR AT TOILET ROOM PERIMETER PER A-3.1 DRAWING. MATERIAL AND PATTERN TO MATCH EXISTING. COLOR AS SELECTED BY ARCHITECT. REFER TO SPECS FOR ADITT. INFORMATION.
- 9.5 NEW CERAMIC TILE WAINSCOT. SEE SPECS & DET. 1/A-8.2
- 9.6 PATCH EXISTING CER. TILE WAINSCOT AS REQUIRED. MATCH MATERIAL AND PATTERN WITH ADJACENT EXISTING SURFACES. JOINT TO JOINT, WALL CORNER TO WALL CORNER.
- 9.7 REPLACE DAMAGED ACOUSTICAL CEILING AND WALL TILES AS REQUIRED. SAND FINISH, PAINT TO MATCH EXISTING ADJACENT SURFACES.
- 9.8 PAINT ALL EXTERIOR DOORS. COLOR AS PER COLOR BOARD. LOCATED AT DISTRICT'S OFFICE. VERIFY COLOR BOARD NUMBER.
- 9.9 STAIN INTERIOR DOOR SURFACES. SEE SPECS.
- 9.10 PAINT - SEE FINISH SCHEDULE OF SHT A-7.1 AND SPECS.
- 9.11 NEW CARPET PER SPECS.
- 9.12 (N) 6" HT RESILIENT BASE PER SPECS.
- 9.13 (N) V.C.T. FLOOR PER SPECS.

DIVISION 10: SPECIALTIES

- 10.1 INSTALL NEW SOLID PLASTIC TOILET PARTITIONS.
- 10.2 ON RESTROOM DOORS SEE DET. 6/A-1.3
- 10.3 PROVIDE POLE MOUNTED VEHICULAR ACCESSIBILITY SIGN. AT PARKING ENTRANCES. DET. 8/A-1.2
- 10.4 PROVIDE VEHICULAR SITE SIGNAGE, ACCESSIBLE PARKING SIGN AT STALLS. DETAIL: 5/A-1.2
- 10.5 SURFACE MOUNTED SIGN PER SIGNAGE DETAIL: 13/A-1.3 AND SIGN SCHEDULE OF SHT. A-1.1
- 10.6 SIGN READING: "FIRE EXTINGUISHER INSIDE"
- 10.7 NEW WALL MOUNTED FIRE EXTINGUISHER ABC TYPE, INCLUDING WALL MOUNTING BRACKETS. DET: 13/A-8.2
- 10.8 INSTALL NEW OR REINSTALL EXIST. 36" LONG GRAB BAR WITH WALL MOUNTING BRACKETS & BACKING PLATES. DETAILS: 7/A-1.3 & 8/A-1.3
- 10.9 INSTALL NEW OR REINSTALL EXISTING 48" LONG GRAB BAR WITH WALL MOUNTING BRACKETS & BACKING PLATES. DETAILS: 7/A-1.3 & 8/A-1.3
- 10.10 NEW MIRROR, MIRRORED STAINLESS STEEL. DET: 20/A-1.3
- 10.11 POWDERED SOAP DISPENSER, FURNISHED & INSTALLED BY OWNER.
- 10.12 PAPER TOWEL DISPENSER FURNISHED & INSTALLED BY OWNER. CONTRACTOR TO PROVIDE BACKINGS.
- 10.13 TOILET TISSUE DISPENSER FURNISHED AND INSTALLED BY OWNER.
- 10.14 W/MAX 3" ENCHROACHING FROM WALL FINISH SURFACES, AND NO CLOSER THAN ONE AND ONE HALF INCHES TO THE TANGENT POINT OF THE GRAB BAR.
- 10.15 NEW MARKERBOARD PER SPECS AND DETAIL: 17/A-8.2.
- 10.16 NEW TACKBOARD PER SPECS AND DETAIL: 18/A-8.2.

- 10.16 SIGNAGE FOR "NON ACCESSIBLE EXIT" AT REAR DOOR OF EACH CLASSROOM PER DET. 10/A-1.2

SECTION 15: MECHANICAL

- 15.1 NEW OR REMOUNT EXISTING LAVATORY AS REQUIRED.
- 15.2 NEW TOILET
- 15.3 NEW WALL MOUNTED URINAL.
- 15.4 NEW SINK.
- 15.5 NOT USED
- 15.6 INSTALL ACCESSIBLE DRINKING FOUNTAIN W/RAILINGS. SEE DETAILS: 2 & 10/A-1.3 AND MECHANICAL DRAWINGS
- 15.7 INSTALL (N) DUAL HEIGHT ACCESS. DRINKING FOUNTAIN SEE NOTE NO.2 ON 2/A-1.3

DIVISION 16: ELECTRICAL

- 16.1 CONTINUOUS ELECTRIC PLUG MOLD PER ELEC. DRAWINGS.
- 16.2 NEW ILLUMINATED EXIT SIGN. SEE ELECTRICAL.
- 16.3 NEW 2'X4' SURFACE MOUNTED LIGHTS. SEE ELECTRICAL.
- 16.4 CLEAN EXISTING LENS, FIXTURE CAN AND RELAMP WITH NEW AT SOFFIT.

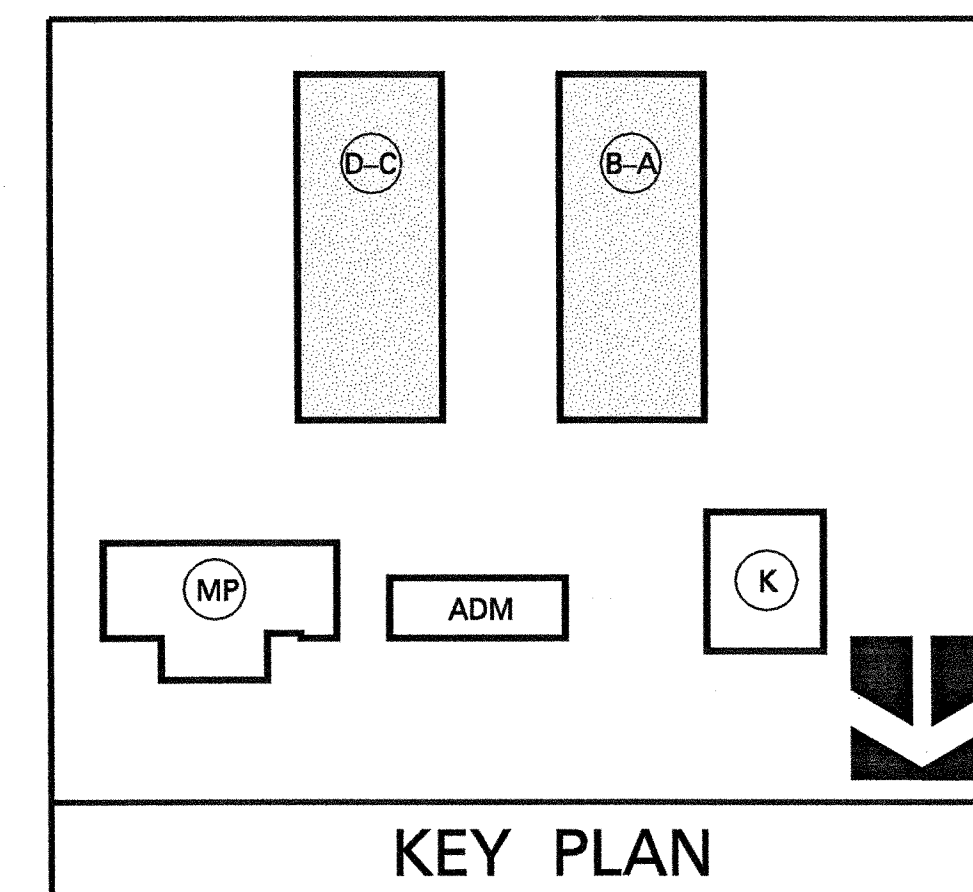
LEGEND:

- FE LOCATION OF NEW (N) OR EXISTING (E) FIRE EXTINGUISHER & SIGN MOUNTING HEIGHT TO BE 48" A.F.F. TO THE HANDLE

NOTES:

1. FOR SIGNAGE SCHEDULE SEE DWG. A-1.1
2. FOR SIGNAGE LOCATION @ ACCESSIBLE TOILETS SEE ENLARGED FLOOR PLANS ON DWG. A-3.1 & A-3.2
3. ENSURE ELECTRICAL OUTLETS ARE REMOVED FROM COUNTERTOP BACKSPLASH AND REINSTALLED ABOVE BACKSPLASH.
4. PROVIDE NEW GLAZING FOR APPROXIMATELY 80% OF EXISTING WINDOWS. REPLACE ALL PLEXIGLASS WINDOW PANES AND ANY DAMAGED GLASS WINDOW PANES. WHERE TINTED, NEW TINT COLOR WILL MATCH THE PREDOMINANT TINT COLOR OF EACH BUILDING.
5. REPLACE ALL PLEXIGLASS WINDOW PANES AND ANY DAMAGED GLASS WINDOW PANES. TYPICAL THROUGHOUT THIS SCHOOL.

REFER TO SHT. D-2.1 FOR DEMO KEY NOTES AND TO SHT. A-2.1 FOR CONSTRUCTION KEY NOTES



KEY PLAN

IDENTIFICATION STAMP
DIV. OF THE STATE ARCHITECT
OFFICE OF REGULATION SERVICES
APPL. 4 101416
AC. FL. SS.
DATE

DSA APPROVAL

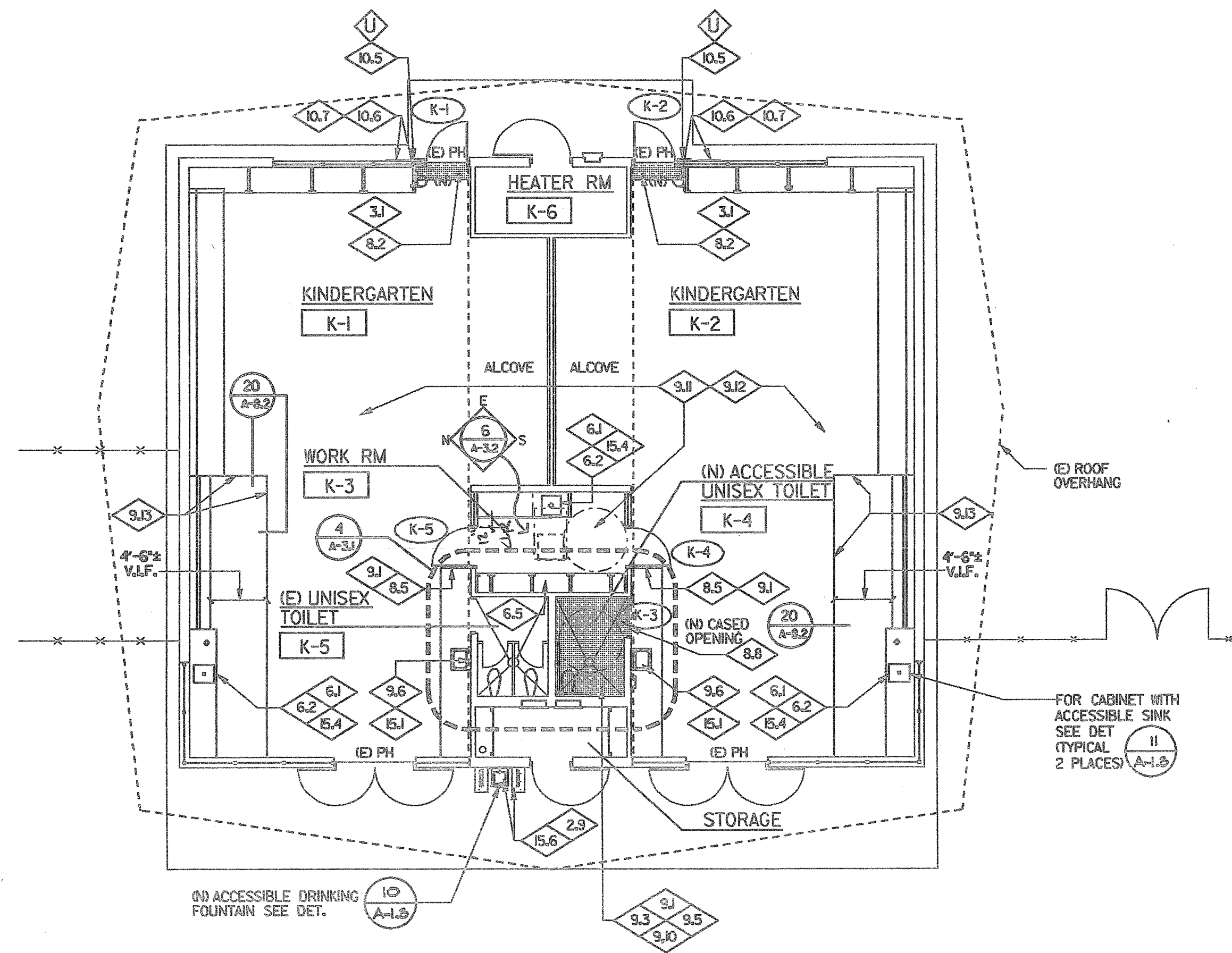
NTD
ARCHITECTS
2025 Fremont Way, Suite 100, Glendale, CA 91201
Glendale • San Diego • Auburn

ALTERATIONS TO
WILLMORE ELEMENTARY SCHOOL
WESTMINSTER SCHOOL DISTRICT
WESTMINSTER, CALIFORNIA
FLOOR PLANS - A-B & C-D BLDGS.

DATE: 12/27/00
JOB NO. 19980192
DRAWN BY: [Signature]
CHECKED BY: [Signature]
SHEET OF
AD
A-2.1

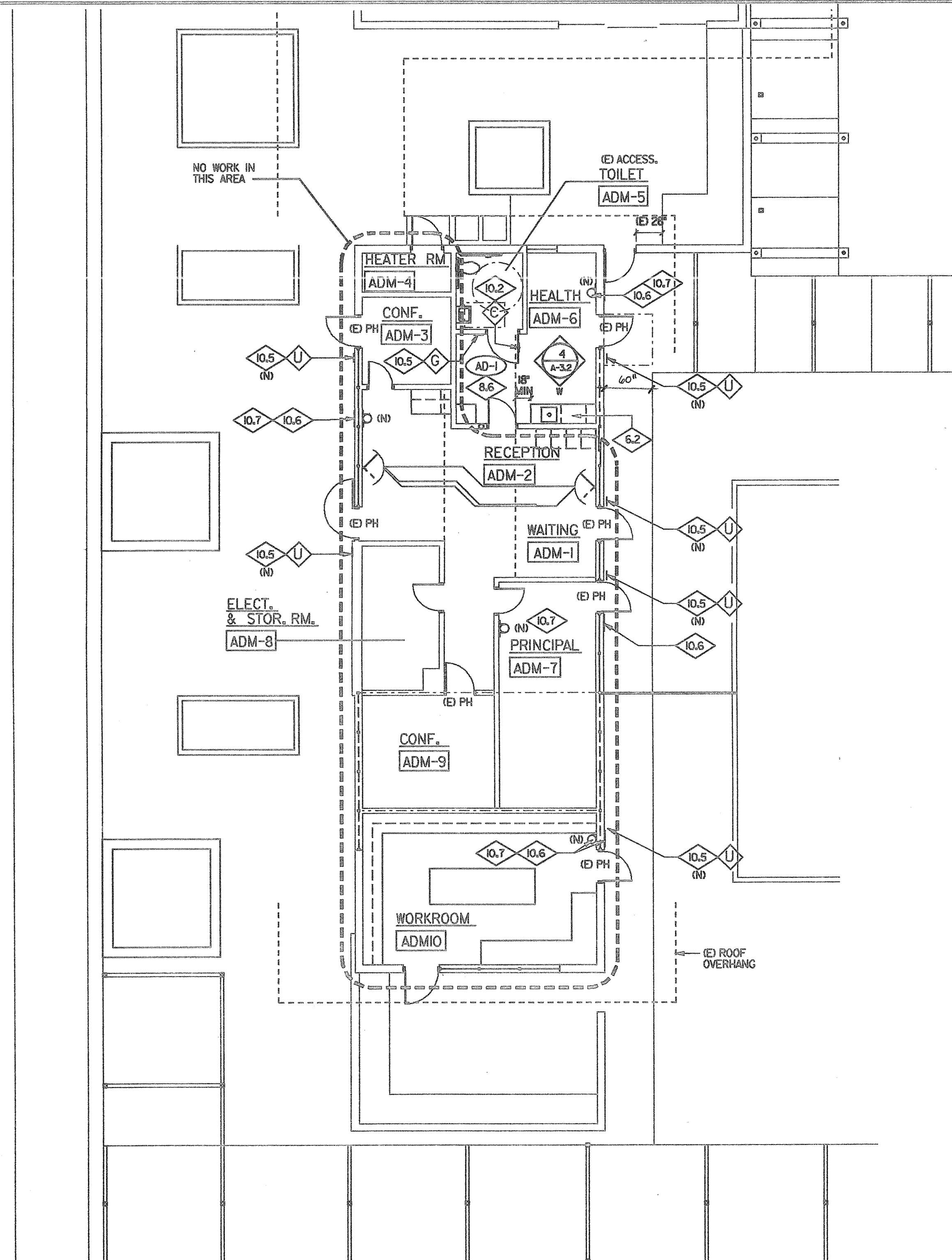
DATE: 08-10-1999 TIME: 13:06
FILE: P:\westminster\ssd\9821\9821.dgn

KINDERGARTEN BUILDING - "K"



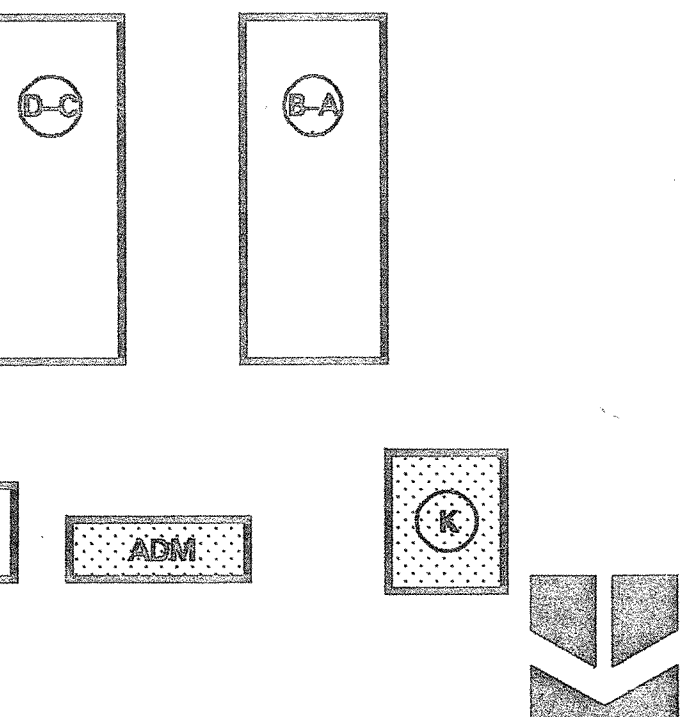
SCALE
1/8" = 1'-0" 1

ADMINISTRATION BUILDING



SCALE
1/8" = 1'-0" 2

REFER TO SHT. D-2.1 FOR DEMO
KEY NOTES AND TO SHT. A-2.1
FOR CONSTRUCTION ☐ KEY NOTES



KEY PLAN

DSA APPROVAL

- LEGEND:
- FE LOCATION OF NEW (N) OR EXISTING (E)
FIRE EXTINGUISHER & SIGN MOUNTING
HEIGHT TO BE 48" A.F.F. TO THE HANDLE
- NOTES:
1. FOR SIGNAGE SCHEDULE SEE DWG. A-1.1
SIGNAGE SYMBOL ☐
2. FOR SIGNAGE LOCATION @ ACCESSIBLE TOILETS
SEE ENLARGED FLOOR PLANS ON DWG. A-3.1& A-3.2

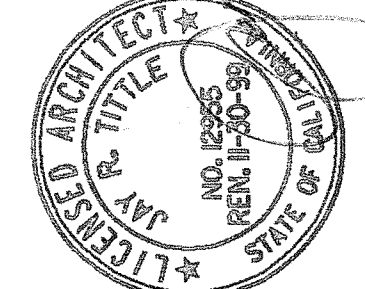
ALTERATIONS TO
WILLMORE ELEMENTARY SCHOOL
WESTMINSTER SCHOOL DISTRICT
WESTMINSTER, CALIFORNIA
FLOOR PLANS - ADMIN. & KINDERGARTEN BLDGS.

DATE: 7/7/99
JOB NO.: 19980152
DRAWN: [Signature]
CHECKED: [Signature]

SHEET 01

A-2.2

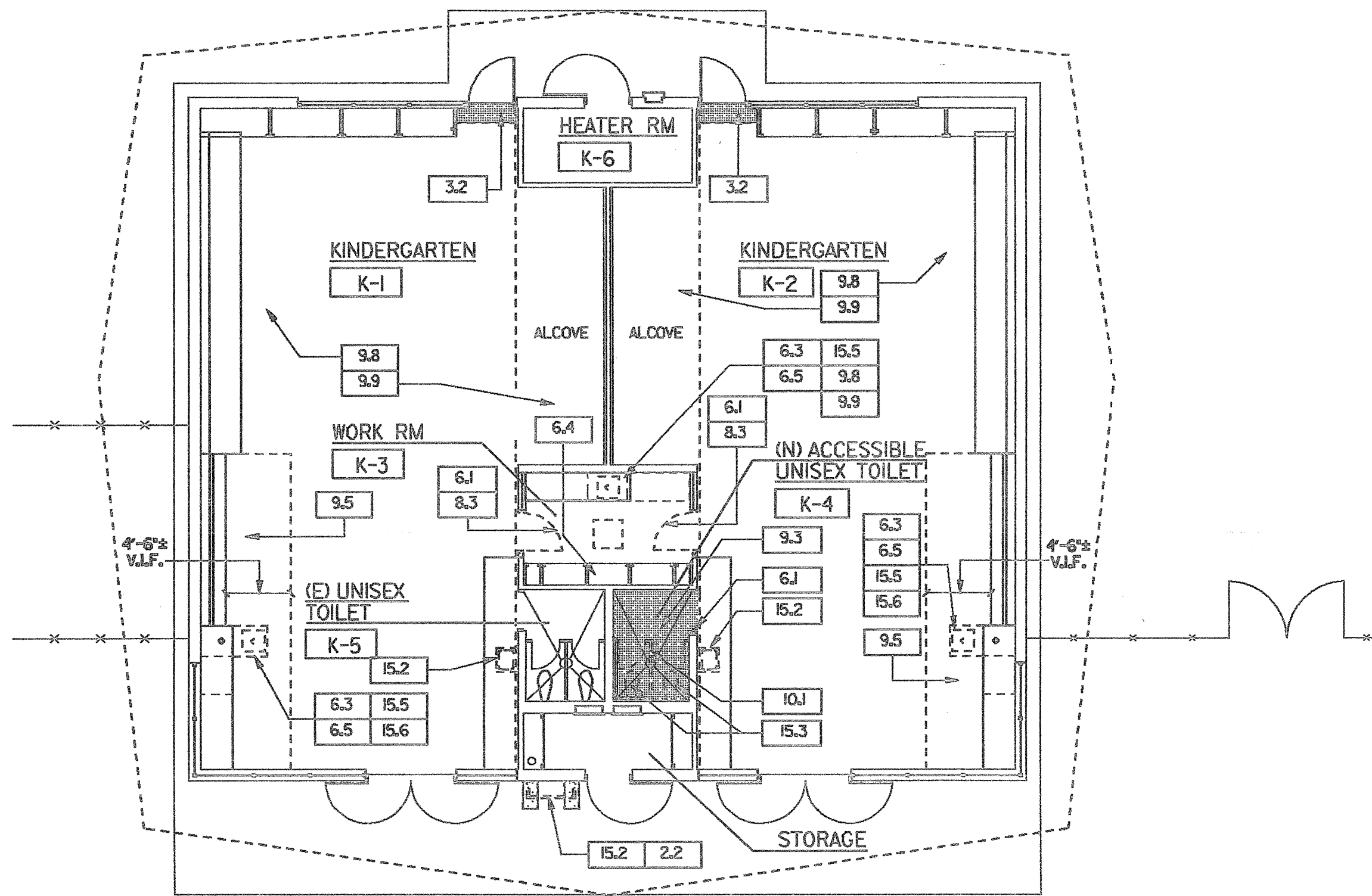
NTD
ARCHITECTS
2205 Fremont Way, Suite 103 Glendora, CA 91741
Glendora • San Diego • Anaheim



C210

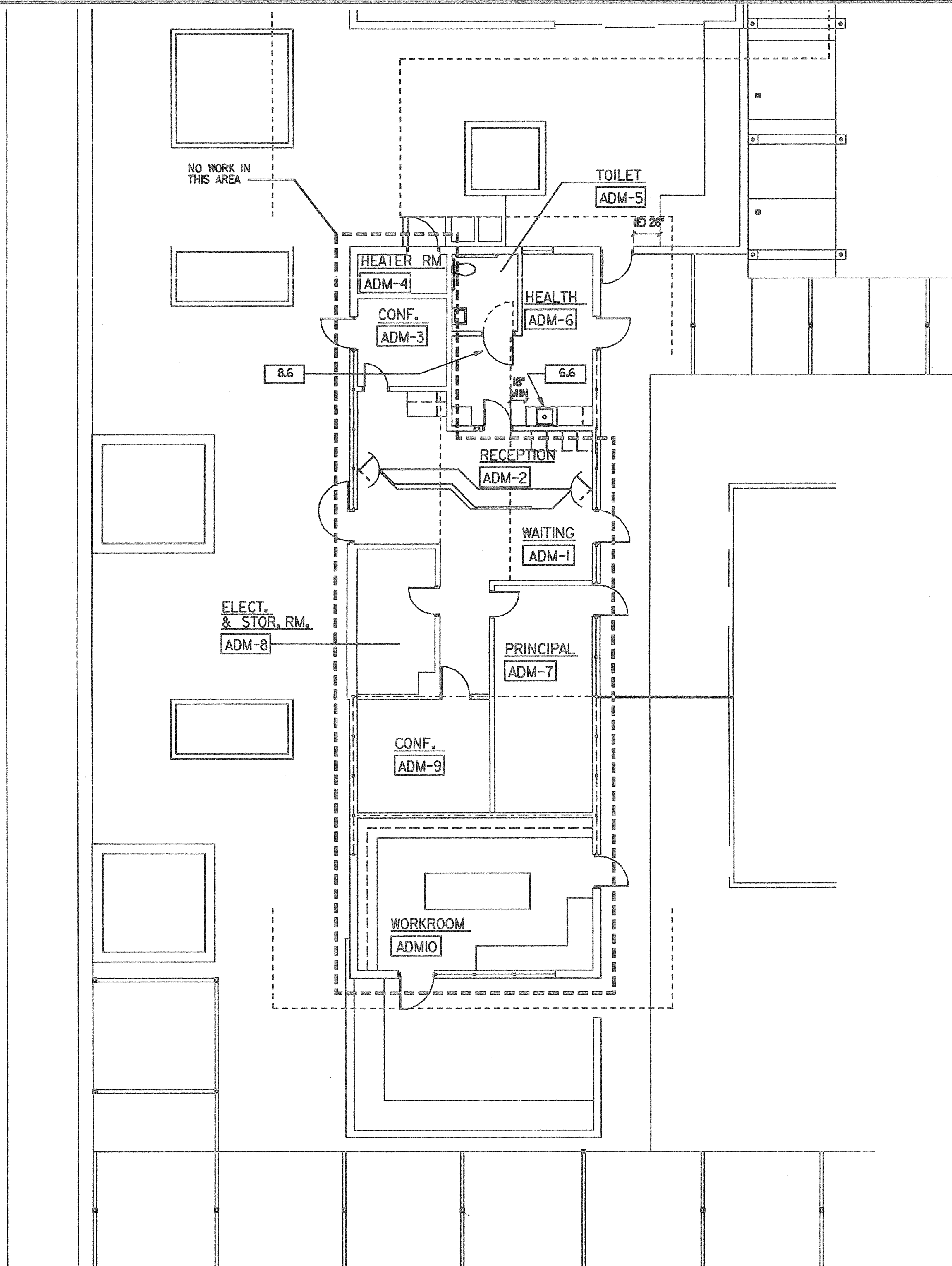
FILE: P:\westminster\ssd\9821\9821.dgn

DATE: 08-10-1999 TIME: 13:07
FILE: P:\Westminster\ter.dwg



KINDERGARTEN BUILDING - "K"

SCALE
1/4" = 1'-0" 1

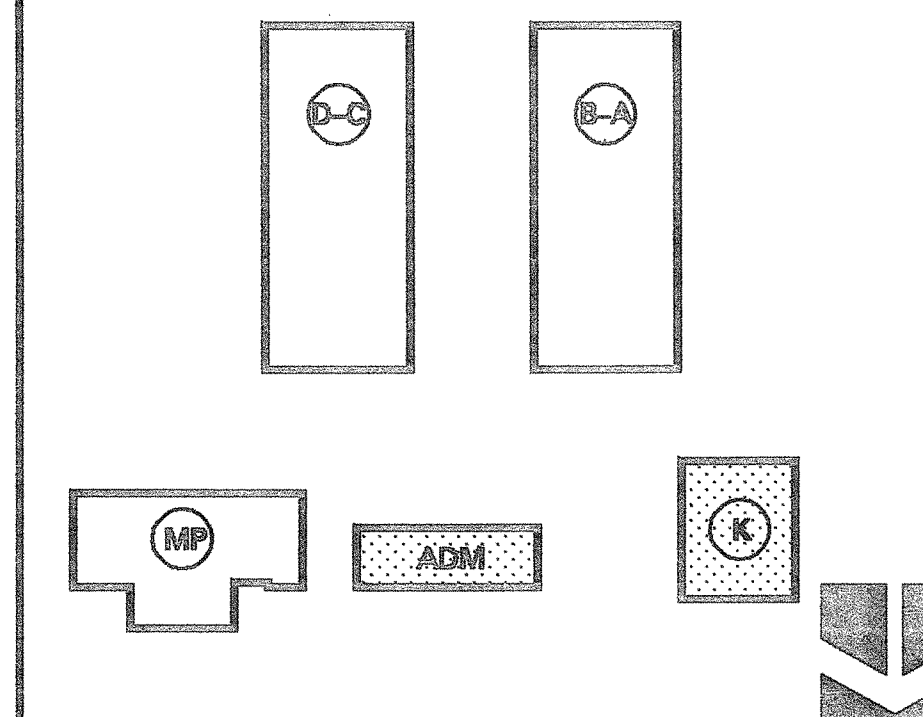


ADMINISTRATION BUILDING

SCALE
1/4" = 1'-0" 2

LEGEND:

FE (E) LOCATION OF EXISTING (E) FIRE EXTINGUISHER
& SIGN.



KEY PLAN

DSA APPROVAL

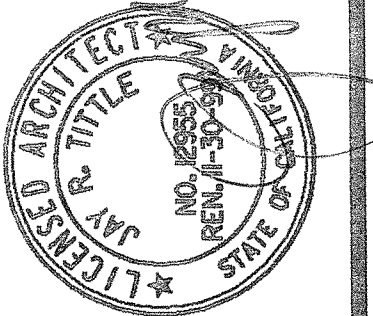
ALTERATIONS TO
WILLMORE ELEMENTARY SCHOOL
WESTMINSTER SCHOOL DISTRICT
WESTMINSTER, CALIFORNIA
DEMOLITION FLOOR PLANS - ADMIN. & KINDERG. BLDGS.

DATE: 7/19/99
JOB NO.: 15560152
DRAWN: [Signature]
CHECKED: [Signature]

SHEET OF

D-2.2

NTD
ARCHITECTS
2021 Fairchild Way, Suite 105, Glendale, CA 91204
Glendale • San Diego • Adam



FILE: P:\Westminster\ter.dwg