



Dear Community,

As the warmth of spring has arrived, it's exciting to see our students preparing for annual events such as the art show, concerts and spring athletic contests, as well as the end of year traditions. Work on our Phase VI capital project at the middle school and outdoor athletic facilities is progressing steadily. We anticipate the fields will be ready for our athletes in the fall, and look forward to the summer for the continuation of the middle school classroom reconstruction and stairwell replacement, as well as bus loop repair.

In a few short weeks, our annual budget vote and Board of Education candidate election will be held. Creating our school district budget is a meticulous process that demands careful consideration as we aim to provide quality programs for students in a fiscally accountable manner. We've dedicated extensive time to scrutinizing expenditures, seeking efficiencies, evaluating student and program needs, and determining staffing requirements. As a result, we're pleased to present what we believe to be a fiscally responsible budget for your consideration on May 21, 2024.

The proposed 2024-25 school budget of \$103,303,515, endorsed by the Board of Education on April 9, 2024, represents an increase of 4.08% over last year's budget. This would result in a 2.77% increase in the tax levy, which remains below the district's levy cap of 5.24%. The proposed budget will continue to keep Churchville-Chili as one of the lowest tax rates in the county.

On the ballot, you will see our proposed school budget for the 2024-25 school year along with three additional propositions. The first is to acquire eight conventional buses; the second is to acquire one electric school bus; and the third is to create a bus purchase reserve for future bus purchases (gas, diesel or electric). New York State has mandated that public school districts transition to zero-emission buses by 2027, with full electrification by 2035. Given we have no experience with electric buses, we are seeking to purchase one bus in order to learn about its capacity to transport (mileage), charging needs, and maintenance training.

Additional information about our district's proposed budget for the 2024-25 school year, as well as our Board of Education candidates, may be found on the following pages. Detailed budget information included in this newsletter is also posted on the district website at <https://www.ccsd.org/Budget>.

We look forward to seeing you on campus for our upcoming student events and celebrations and hope you will take the opportunity to vote on Tuesday, May 21, 2024.

Sincerely,

Dr. Lori Orologio
Superintendent of Schools

**Budget
Vote**

May 21, 2024

Middle School
North Cafeteria, Door 31
noon-9 p.m.



Summary of Budget Proposals

	Budget 2023-24	Proposed Budget 2024-25	Difference	Percentage
Expenditures	\$99,258,220	\$103,303,515	\$4,045,295	4.08%
Revenues	\$56,435,415	\$58,316,153	\$1,880,738	3.33%
Appropriated Fund Balance/Reserves	\$1,662,181	\$2,686,589	\$1,024,408	61.6%
Tax Levy	\$41,160,624	\$42,300,773	\$1,140,149	2.77%
Estimated True Value Tax Rate	\$16.19	\$14.45	(\$1.74)	(10.7%)

As illustrated by this table, a budget of \$103,303,515 results in an increase of 4.08% over 2023-24.

Budget Information

How we arrived at the budget

Four Board of Education meetings were held that were dedicated to budget discussions. Principals, directors, instructional leaders and community members were consulted in this process. Each request was carefully analyzed to determine what should be included in the budget. The district worked hard to maintain quality programs across the district, support educational programs and services vital to successful implementation of district goals, meet the needs to all students and staff, meet the safety and security needs across the district, while identifying alternate funding sources and cost saving measures to keep the tax levy within property tax cap calculation.



Changes reflected in the proposed budget

- State aid
- Retirement salary savings
- Reduction of debt services
- Unfunded mandates
- Special Education services
- Expansion of lottery-based UPK program
- Contracted obligations
- Additional staffing and budget allocation:
 - School nurse
 - The Learning Center (TLC) teacher
 - Elementary math intervention teachers
 - Health, Art and ELL teachers
 - Speech language pathologist
 - Increased funding for HS students to attend Career and Technical Education programs at WEMOCO and programs at Westside Academy

Three-Part Expenditure

New York State law requires that all school districts present the proposed budget in three parts that include: Program, Capital and Administrative. The law also states that these three-part expenditures of the budget must exclude propositions or voter-authorized adjustments.

Program

The Program component of the proposed budget includes expenses associated with instructional programs, teacher salaries and benefits, transportation, special education and community services.

Capital

The Capital component contains maintenance costs for buildings and grounds, custodial services, utilities, tax refunds and judgments, capital expenses and debt service.

Administrative

The Administrative component consists of costs associated with personnel, communications, BOCES administration, all administrators, financial and legal services, the Superintendent's Office and Board of Education expenditures.

Component	2023-24	Percent of Budget	2024-25	Percent of Budget	Dollar Change
Program	\$71,908,690	72.45%	\$74,566,949	72.18%	\$2,658,259
Capital	\$16,209,617	16.33%	\$16,994,664	16.45%	\$785,047
Administrative	\$11,139,913	11.22%	\$11,741,902	11.37%	\$601,989

Proposition 1: Budget

Voters will decide whether to approve the proposed budget of \$103,436,739 as presented by our Churchville-Chili Board of Education for the 2024-25 school year.

Proposition 2: Bus Purchase

Voters will decide on a resolution authorizing the district to purchase eight 66-passenger diesel school buses at an estimated maximum cost of \$1,456,255.

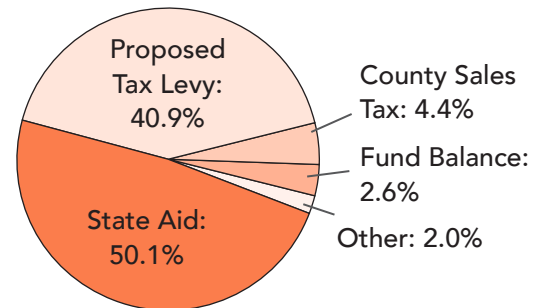
Proposition 3: Electric Bus Purchase

Voters will decide on a resolution authorizing the district to purchase one zero-emission electric school bus at an estimated maximum cost of \$445,534.50, less applicable grants.

To learn more about the New York State mandate, please visit the New York State website at: nyserda.ny.gov/all-programs/electric-school-buses.

Proposition 4:

Voters will decide on a resolution authorizing the district to establish a Capital Reserve Fund to finance the purchase of diesel and zero-emission electric school buses and vehicles and related infrastructure. The ultimate amount of the fund is to be \$15,000,000 with a probable term of ten years.



State Aid:	\$51,751,013
Proposed Tax Levy:	\$42,300,773
County Sales Tax:	\$4,500,000
Fund Balance:	\$2,686,589
Other:	\$2,065,140

What Tax Rate Means to the Homeowner

Town	2023-24 Equalization Rate	2023-24 Actual Property Tax Rate	2024-25 Equalization Rate	2024-25 Estimated Property Tax Rate	Estimated Change	2024-25 Estimated Property Tax (per \$200,000 Assessed Value)
Riga	91%	\$17.80	82%	\$17.62	(\$0.18)	\$2,890
Ogden	69%	\$23.47	100%	\$14.45	(\$9.02)	\$2,890
Chili	80%	\$20.24	100%	\$14.45	(\$5.79)	\$2,890
Sweden	93%	\$17.41	100%	\$14.45	(\$2.96)	\$2,890
True Value of Home	100%	\$16.19	100%	\$14.45	(\$1.74)	\$2,890

Voter qualifications

In order to vote you must be:

- A United States citizen.
- At least 18 years of age.
- A resident of the Churchville-Chili Central School District for at least 30 days prior to the vote.

Absentee ballots

Residents unable to vote because of disabilities, illness, travel or other reasons listed as valid under election law, may request applications for absentee ballots. Residents unable to appear in person at the polls on election day may request applications for early voter ballots. Applications are available on the district website or by contacting the District Clerk at 293-1800, ext. 2300 or in-person

at our administrative offices located at 139 Fairbanks Road. The district must receive applications by May 14, 2024, at least seven days before the vote, if the resident would like to receive the ballot by mail. Residents who wish to pick up their absentee ballots in person may apply through May 20, 2024. In all cases, the ballot must be returned to our administrative offices no later than 5 p.m. on May 21, 2024. Ballots received later than this cannot be accepted under education law, regardless of the postmarked date.

For more information

If you would like to learn more about the proposed budget, please contact Matthew DeAmaral, Assistant Superintendent for Business Services, at 293-1800 ext. 2330 or

mdeamaral@cccsd.org or Lori Orologio at 293-1800 ext. 2300 or lorologio@cccsd.org. Budget information is also available on the district website at www.cccsd.org/budget.

Tax Cap Information

As with all districts, the tax cap is calculated using a complex equation. This year the tax levy cap specific to the Churchville-Chili District is 5.24%. With a proposed increase to the levy of 2.77%, the district is below the State's cap. The proposed budget will continue to keep Churchville-Chili as one of the lowest tax rates in the county.

2024-25 Budget Proposal and Comparison Figures

Overall Budget Proposal	Budget Adopted for the 2023-24 School Year	Budget Proposed for the 2024-25 School Year	Contingency Budget for the 2024-25 School Year
Total Budgeted Amount, Not Including Separate Propositions	\$99,258,220	\$103,303,515	\$101,411,947
Increase/Decrease for the 2024-25 School Year		\$4,045,295	\$2,153,727
Percentage Increase/Decrease in Proposed Budget		4.08%	2.17%
Change in the Consumer Price Index		4.12%	
A. Proposed Tax Levy to Support the Total Budgeted Amount	\$41,160,624	\$42,300,773	\$41,160,624
B. Levy to Support Library Debt, if Applicable			
C. Levy for Non-Excludable Propositions, if Applicable			
D. Total Tax Cap Reserve Amount Used to Reduce Current Year Levy			
E. Total Proposed School Year Tax Levy (A + B + C - D)	\$41,160,624	\$42,300,773	
F. Permissible Exclusions to the School Tax Levy Limit		\$11,354	
G. School Tax Levy Limit, Excluding Levy for Permissible Exclusions	\$41,784,552	\$43,070,010	
H. Total Proposed Tax Levy for School Purposes, Excluding Permissible Exclusions and Levy for Library Debt, Plus Prior Year Tax Cap Reserve (E - F)	\$41,160,624	\$42,289,419	
I. Difference: (G - H); (Negative Value Requires 60% Voter Approval)	\$623,928	\$1,017,591	
Administrative Component	\$11,139,913	\$11,741,902	\$11,544,147
Program Component	\$71,908,690	\$74,566,949	\$74,529,390
Capital Component	\$16,209,617	\$16,994,664	\$15,338,410

Basic STAR Exemption Impact

Under the Budget Proposed for the 2024-25 School Year

Estimated Basic STAR Exemption Savings¹ \$434

The annual budget vote for the fiscal year 2024-25 by the qualified voters of the Churchville-Chili Central School District, Monroe County, New York, will be held at the Middle School North Cafeteria, Door 31 in the district on Tuesday, May 21, 2024, between the hours of noon-9 p.m.

¹The basic school tax relief (STAR) exemption is authorized by section 425 of the Real Property Tax Law.

Meet the Board of Education Candidates

There are three open seats, each for a three-year term. Candidates are listed in order they will appear on the ballot.



Kathryn Arzuaga

585-261-1033
6 Hermoso Rise
Rochester, NY 14624

How many years have you lived in the district?
12 years

What is your Occupation?

I have worked for the Rochester City School District for the past 24 years as an Administrator, Teacher, and Mentor. I presently hold the position of Associate Director of Early Childhood.

Do you have children attending Churchville-Chili schools?

I, along with my husband (a Teaching Assistant at our Middle School), are the proud parents of a 1st grader and 3rd grader at Fairbanks Road Elementary School.

Please list your contributions to or involvement in the community and the community service you have done.

- Volunteered on the Churchville-Chili Central School District Universal Prekindergarten Planning Committee
- Parent Volunteer on School Field Trips
- Volunteered in Children’s Ministry at a local Church
- Supporter of Chili Youth Baseball and Chili Soccer Association
- Participant of the Prospective School Board Candidate Seminar hosted by Monroe County School Boards Association

Why do you want to be a school board member?

As a parent and educator, I understand the value and importance of receiving a high-quality education. I want to advocate for all of our students to feel successful both academically and socially and receive the support and resources they need to develop their unique talents and abilities. I bring with me extensive years of working in the field of Education. My knowledge and skill set will be a valuable resource in the discussions and decision-making processes we have as board members. I am able to provide a viewpoint of how the decisions may impact the work inside and outside of our classrooms. It would be an honor to serve our students, families, staff, and community members as part of the Churchville-Chili Central School District’s Board of Education.

What do you think are the two top issues facing Churchville-Chili schools over the next three years?

Board members are charged with the goal of presenting a budget that provides all students with a quality education in a financially responsible manner. With this in mind, I believe it raises two key issues our school district will likely face in the upcoming years.

With the constant changing demands placed on public education and as our district transitions to a new Superintendent, we need to ensure that we continue to focus on our students’ academic and social emotional needs. This would involve advocating for adequate funding for our schools in order to meet the ongoing requirements placed on public education, its staff, and students.

As we focus on providing high quality education, we will have to focus on maintaining a fiscally responsible budget. This call will continue to be a topic for the upcoming years as we navigate the financial demands placed on both our school district and our community. Overall, it entails developing and maintaining a fiscally responsible budget and maximizing resources to provide a high-quality education.



Jonathan V. Payne

585-204-0234
12 Sunnyside Lane, 14514

How many years have you lived in the district?
19 years

What is your Occupation?

Police Officer (Monroe County Sheriff’s Office)

Do you have children attending Churchville-Chili schools?

My son Silas is a senior this year. My daughters Mercy and Eden are in 10th and 7th grade respectively.

Please list your contributions to or involvement in the community and the community service you have done:

I am finishing my 6th year as a CCCSD BOE member. I am also a volunteer Chili Soccer Association coach for both the Girls 2008 & 2011 teams (10+ years with the organization).

Why do you want to be a school board member?

I would like to continue as a board member to help transition in our new superintendent, continue to work for our students and staff members, and to make sure we are fiscally responsible with tax payer money.

What do you think are the two top issues facing Churchville-Chili schools over the next three years?

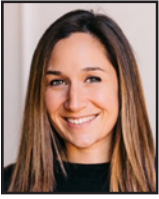
Staff retention is an important issue facing our district. Hiring and keeping qualified teachers and support staff has been a priority these last couple of years. This should continue to be a focal point for our district. Safety and Security should always be a top priority. Ensuring our students and staff are in a safe learning environment will always be important to me. I appreciate all that our Safety team has done to watch over our three campuses and the district’s continued relationship with our School Resource Officer.

BUDGET VOTE

MAY 21, 2024

Meet the Board of Education Candidates

There are three open seats, each for a three-year term. Candidates are listed in order they will appear on the ballot.



Alycia Nagle (Onderdonk)

585-760-4716
355 Palmer Rd.
Churchville NY 14428

How many years have you lived in the district:
A total of 31 years.

What is your Occupation?

I am the Director of a training team at URM. This marks my 17th year at URM, where my career began as an RN.

Do you have children attending Churchville-Chili schools?

Yes, my husband and I have three daughters in the district.

Please list your contributions to or involvement in the community and the community service you have done.

As Churchville-Chili alumni, along with many of our family members, my husband and I have been rooted in this community our entire lives. Over the last three years, I have had the honor of volunteering as an elected school board member. This includes attending board meetings, committee representation, CSPA participation (as a parent and Board member) and hours preparing for those responsibilities. With two girls attending CES and one in the MS, we attend and participate in many school related events. Our girls currently enjoy Girl Scouts, volleyball, and soccer as extracurriculars. Last year I was the assistant coach for our youngest's team. As the girls continue to take advantage of the opportunities that the school and community provide, I become even more involved; fundraising, volunteering, and supporting. It's exciting watching our kids enjoy these programs while we get to know so many great families.

Why do you want to be a school board member?

I want to do everything I can to have a positive impact on the education of my children. Naturally, as a board member, my passion to have a positive impact and to enhance public education extends to every student, each staff member, and our broader community.

As a board member, I can use my strengths to help protect and maintain the integrity of our school system through advocacy and support. It's important to me that students have a positive school experience and develop into well-rounded citizens, that staff have the tools and support they need to cultivate a positive learning environment, and that all involved are accountable to the work and standards established. Lastly, it is critical that everyone feels represented and advocated for, including the community that helps to fund these efforts.

This has and will continue to be a big responsibility. I am willing to continue to make the necessary sacrifices to dedicate my time to this work. I will continue to be diligent to seek to understand opposing views, and to educate myself on the education environment so that I can advocate, support, and provide thoughtful contributions to discussions and decisions.

What do you think are the two top issues facing Churchville-Chili schools over the next three years? Of the many topics to be aware of and address:

1. Student behavior and related discipline and/or remediation. We need to assist those students who are struggling by addressing any underlying causes, instead of simply addressing the symptom, with the goal of sustained student improvement. It's imperative that we balance individual needs with the need to provide a safe and effective learning and work environment for all students and staff.
2. Continued learning recovery and more generally, ensuring that every student learns and grows each year. This means that struggling students are provided resources to overcome and grow, students that excel are provided with opportunities to pursue higher achievement, and those students that fall in the middle of that spectrum, aren't overlooked.



Colleen Parker

585-750-4834
3716 Chili Ave
Rochester NY 14624

How many years have you lived in the district?
12 years

What is your occupation? School psychologist

Do you have children attending Churchville-Chili schools?

My son Roman is a freshman at the 9th grade academy and daughter Kennedy is in 6th grade at the middle school.

Please list your contributions to or involvement in the community and the community service you have done.

My husband and I have volunteered over the years at various school events, donated to support activities for PTO events, educator appreciation celebrations, music appreciation, sporting events, and attend classroom events and field trips. I believe in the importance of supporting educators and doing what we can to contribute to a positive learning environment for all. I look forward to continuing to find ways to support and be involved.

Why do you want to be a school board member?

I would appreciate the opportunity to positively impact our schools and our community. As an educator myself, I am motivated to promote best practices in the district in order to effectively meet the needs of all stakeholders involved in the learning process. My husband grew up in Chili, and is a graduate of Churchville-Chili. We are both educators. He is a special education teacher, and I am a school psychologist in a neighboring school district. We made our

home here, in large part, because of the positive experiences my husband had as a younger man both in school with his teachers, as well as within the larger community as a whole. I believe that my training, and my near 20 years of experience working as a school psychologist provides me with valuable insight concerning the recognition of the needs of our children as students, parents, and our educators. I feel my experience would be useful when working with others to identify problems related to the educational system, and in generating and implementing creative solutions to help to solve those problems. I feel I would bring a unique lens to the school board as an experienced educator and mental health professional, as a person who has dedicated their life to advocating for kids, as a parent of two children in the district, and as the wife of a life-long member of this community.

What do you think are the two top issues facing Churchville-Chili schools over the next three years?

It is essential for the BOE to work cooperatively with all stake holders when providing guidance and making decisions while balancing how best to address the needs our students, educators and schools face, in a fiscally appropriate manner when overseeing initiatives, and large scale projects such as the renovations occurring in the district over the next several years and the growth of the pre-K programming. I also believe that it is imperative that our teachers have the resources required to address the academic and social emotional needs of our students at every developmental level. Continuing to support the district and educators on the ever-changing demands and expectations of the educational landscape requires deeply committed and engaged board members and I look forward to having the opportunity to serve.

10th

ANNUAL
SAINTS SPORTS BOOSTER CLUB, INC.



FOOD TRUCK RODEO FUNDRAISING EVENT

FREE
ADMISSION

WHEN

MAY 23, 2024 4:30-9 PM

WHERE

Churchville-Chili High School Bus Loop
139 Fairbanks Road, Churchville 14428

WHAT

Food Trucks - Raffles - Music - Fun - Games
and Vendors!

"COME JOIN IN ALL THE FUN"

#SSBC_FTR_2204



Student artwork featured in NYSATA exhibit

Twenty-four students from the middle school and high school have work submitted in the NYSATA Region 2 Art Exhibit hosted at the Davison Gallery at Roberts Wesleyan University. Congratulations to our talented student artists who had pieces selected for the exhibit.



Elementary All-County Music Festival held at CCPAC

Churchville-Chili hosted area schools for the annual Elementary All-County Music Festival this spring. Over the course of the two-day festival, more than 400 student musicians from throughout the county in grades 4-6 – including 18 from Churchville-Chili schools – visited the CCCSD campus to participate in rehearsals and a public performance. Thank you to everyone who helped make this a successful event.





National Junior Honor Society (grades 8-9) welcomed 107 new members to its ranks this year in a recent induction ceremony. Congratulations!



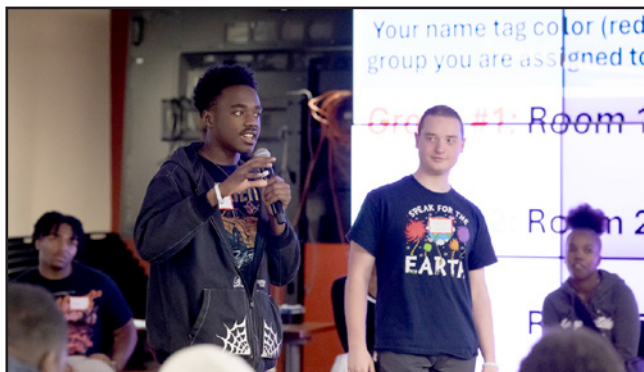
Local news journalists visited sixth grade classrooms at the **Middle School** to speak about what it is like to be a journalist. They provided interview advice, as students prepared to interview a person of their choice for an assignment on nonfiction narrative writing.



Second grade students at **Fairbanks Road School** took the stage this March, performing the theater reading of the book "Give Bees a Chance." The short play focused on the fact that bees are not scary and how they help the environment!



Students at **Churchville Elementary School** celebrated the Global Day of Play in March, with fun activities planned throughout the day. Global School Play Day is observed in schools around the world to give children an opportunity to experience a day of free, unguided play. Students brought toys and games to play with (and share with friends) on this very special day.



Students from the **High School** had the opportunity to attend the Roc2Change Summit in March. Student leaders from local schools engaged in facilitated dialogue with peers related to race, racism, privilege and internalized racism. The theme this year was Unity Grows Communities.



Chestnut Ridge School students dazzled the crowd with their talents during three performances of "101: Dalmatians: Kids" this spring. An impressive 45 third and fourth grade CRS stars took the stage for the school's annual production. Bravo!

Board of Education

Kathleen Dillon,
President

Steve Hogan,
Vice-President

Thomas Albano

Michelle Aloï

Kevin Johnson

Jonathan Payne

Alycia Nagle

Dr. Cheryl Repass

Amy Wilson

Superintendent of Schools

Dr. Lori Orologio

Assistant Superintendent for Business Services

Matthew DeAmaral, CPA

Assistant Superintendent for Instruction

Giulio Bosco

Assistant Superintendent for Human Resources

Larry Vito

Assistant Superintendent for Student Services

Nicole Livingston-Neal

Graphic Designer

Lisa Constantine

Communication Specialists

Ashley Decker & Chris Klem

The Link is published by the Churchville-Chili Central School District for district residents.

Churchville-Chili Central Schools

139 Fairbanks Road
Churchville, New York 14428

Non-Profit Organization
U.S. Postage PAID
Rochester NY
Permit No. 289

ATTENTION

Are you new to the district or have children who have not yet been enrolled in school?

The Churchville-Chili Central School District is seeking your support to assist us in obtaining the most accurate enrollment data for planning future school programs and services.

Please go to our website (www.cccsd.org) as soon as possible and complete our 2024

Enrollment Census form. This form is ONLY if you reside within the district, have children who are or will be eligible to attend CCCSD and have NOT yet been enrolled. Your assistance is greatly appreciated!



May

2	SHS Band Concert	7:00 PM
9	7-8th Grade Band & Orchestra Concert	7:00 PM
13	4-6th Grade Orchestra Concert	6:30 PM
15	5-6th Grade Band Concert	6:30 PM
16	7-8th Grade Vocal Concert	7:00 PM
20	5-6th Grade Vocal Concert	6:30 PM
21	SHS Vocal Music - Chamber Ensemble Concert	7:00 PM
22	SHS Vocal Music - Large Ensemble Concert	7:00 PM
23	FRS Band & Chorus Concert	6:30 PM
28	CRS Band & Chorus Concert	6:30 PM
29	CES Band and Chorus Concert	6:30 PM

June

5	SH Dance Recital	7:00 PM
---	------------------	---------

