

April Newsletter

2023



Communities In Schools of South Carolina proudly serves students at St. Andrews Middle School.

About Communities In Schools

Communities In Schools (CIS) is the largest provider of integrated student supports in the nation. Our program provides the needed supports to help your child stay in school and achieve in life. In 39 schools across South Carolina, more than 24,500 students participate in our programming annually.

Services provided include individual student supports, as well as group sessions that may include topics such as social and emotional wellbeing, goal setting, dealing with peer pressure, improving study habits, building self-confidence skills, academic attendance support, and making healthy choices.

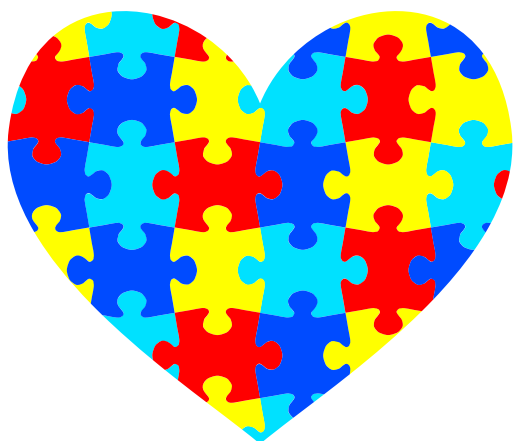


Sydney Jordan, M.Ed.
CIS Site Coordinator
sjordan@cisofsc.org

CISSC at SAMS

National Autism Acceptance Month

April is the month we bring awareness to Autism. So, what is Autism, you may ask? Autism refers to a broad range of conditions characterized by challenges with social skills, repetitive behaviors, speech, and nonverbal communication. Statistics from CDC show that Autism affects an estimated 1 in 44 children in the United States and 1 in 45 people who identify as adults.



Autism is a spectrum composed of these three disorders. The first is the "classic." It's usually what people think of when they hear the word autistic. It comes with language delays, social and communication challenges, and unusual behaviors or interests in things. The next is Asperger Syndrome which is a much more mild symptom. They still may have some social challenges and unusual behaviors; however, they have no problem with language or intellectual ability. The last is Pervasive Developmental Disorder which is also considered sometimes atypical Autism. People who have this specific disorder have fewer and milder symptoms than those with others. The symptoms include possible social and communication challenges.

So, how do you interact with people with Autism? Here are a few tips for you! First, let's be consistent or stick to a schedule. Next, be able to create a safety zone. It helps when it comes to reducing the stress they experience sometimes. Be able to look for nonverbal cues also!

Nonverbal cues are how some children and adults with autism can express their emotions and feelings. Lastly, show them the same love and interest you would like any other child. Remember, "Autism is not a disability it's a different ability!" For further information please read this [article](#).



Books About Autism

My Brother Charlie by Holly Robinson Peete

How I learn by Brenda Miles

David's World by Dagmar H. Mueller

A Day In The Life Of Jaylen by Arelis Gomes & Jaylen Gomes

Parent/Guardian Raffle

Communities In Schools of South Carolina values their partnerships with parents and guardians. In efforts to continue building relationships, CISSC will hold a monthly drawing for parents and guardians who check-in through [this google form](#).

Connect with CIS online!

