

Sayville Public Schools

2021-22

Long-Range Planning Study Update

Presented by:

Dr. Sam Gergis

Assistant Superintendent for Business

sgergis@sayvilleschools.org

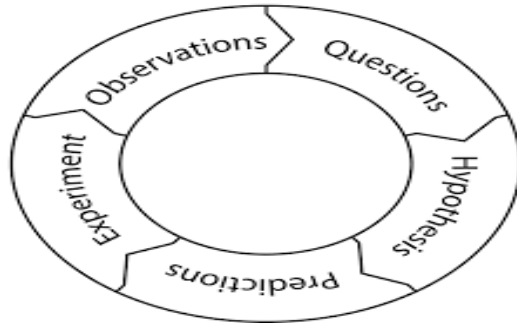
January 13, 2022



2021-22 Enrollment Study Overview

GENERAL OVERVIEW

- Data Compiled, and Report Prepared by Western Suffolk BOCES for Sayville Public Schools
- Enrollment Report Provided District since the 2000-2001 school year
- Integral Budget Planning Tool
 - Staffing
 - Pre-K Program
 - Class Size & Offerings
 - Long-Range Goals & Building Utilization
- Various Factors utilized:
 - Births (Local, Regional, State, and National)
 - Population Trends
 - Real-Estate Data
 - Non-Public School Enrollment
 - Accuracy of Previous Projections
 - District Enrollment
 - Grade Configurations



2021-22 Enrollment Study Overview (cont'd)

METHODOLOGY

- Enrollment Projection Methodology – *Cohort Survival Technique*
 - Actual Student Enrollment, 2011-2021
 - Grade-to-Grade Retention Ratios
 - Projected Kindergarten entering cohort(s) based on live births
- Normal Processes Affecting School Enrollment
 - Birth and Fertility Rates
 - In-and-Out Migration
 - Non-Public School Transfers (In-and-Out)
 - Population Variations
 - Resident Family Characteristics



2021-22 Enrollment Study Data Sources

SELECTED DATA SOURCES

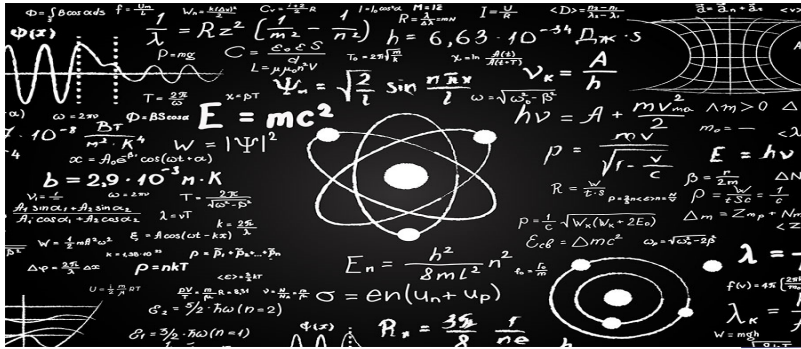
- Brookings Institution
- Joint Center for Housing Studies of Harvard University
- Center for Immigration Studies
- National Association of Realtors
- National Center for Education Statistics
- New York Association of Realtors
- New York State Department of Health
- New York State Education Department
- New York State Office of Real Property Services (ORPTS)
- Pew Research Center
- Town of Islip Planning Department
- United States Census Bureau
- United States Department of Education
- United States Department of Housing and Urban Development (HUD)



Enrollment Study Findings

DEMOGRAPHIC STUDY CONJECTURES

- Population will remain stable due to limited new residential development within Sayville Public Schools . Turnover of approximately 150-175 homes annual is expected to continue
- Kindergarten entrants will be maintained through 2025. From 2026-2031, Kindergarten enrollment is expected to decline, analogous to birth rate trends
- Non-Public school enrollment expected to remain between one to two percent of district resident students



Enrollment Study Forecasting

DEMOGRAPHIC STUDY VARIABLES / MODIFICATIONS

- New level of housing activity, or a change in level of housing turnover, significantly higher or lower than the prior three (3) years
- Expansion, consolidation, or closing; or the formation of new non-public or charter schools
- Sociological changes or changed values regarding family size/births
- Household characteristics that significantly differ from the past three to five years, including the number of persons per household and household occupant age
- A major local or national crisis resulting in a significant change to economic conditions affecting employment, finance and housing deviating from the previous three to five years



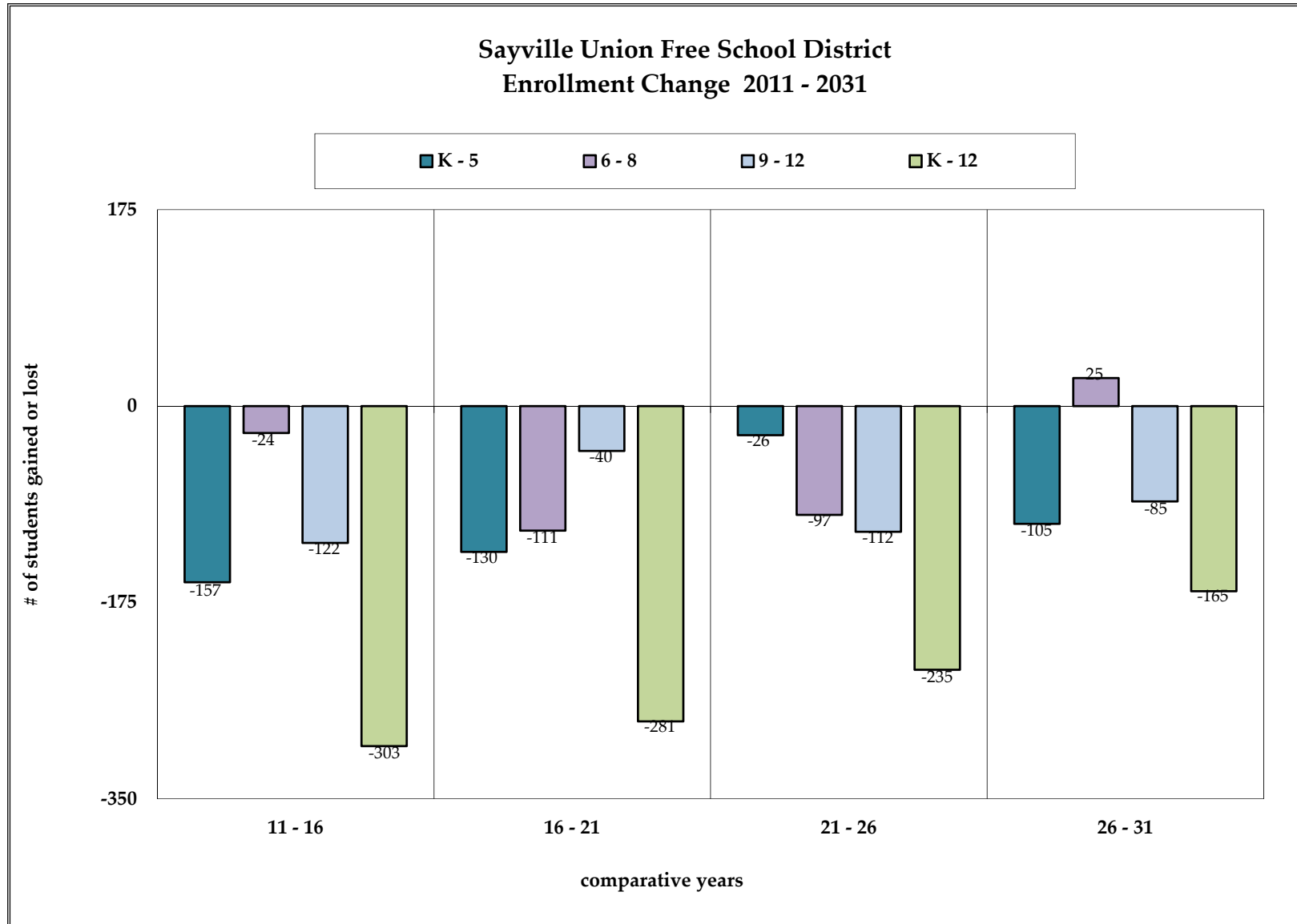
Enrollment Study Accuracy

DEMOGRAPHIC STUDY RELIABILITY

- Most reliable projections are calculated for periods closest in time –first five (5) years. WSB projections typically land within four (4) percent margin of error
 - *2021-22 Sayville Public Schools Enrollment Study Margin of Error – 0.9%*
- District-level projections are likely the most accurate, subsets are not as accurate as the aggregate
- Periodic updates to projections are recommended to maintain modifications, due to migration and demographic trends
- District has conducted this study for 22 years (since 2000-2001 school year)
- Essential for district and budget long-range planning

REVIEW & SUMMARY

Sayville Public Schools *Twenty-Year Enrollment Change* *2011 - 2031*



Ten-Year Enrollment Projections

Projected Sayville UFSD Enrollment

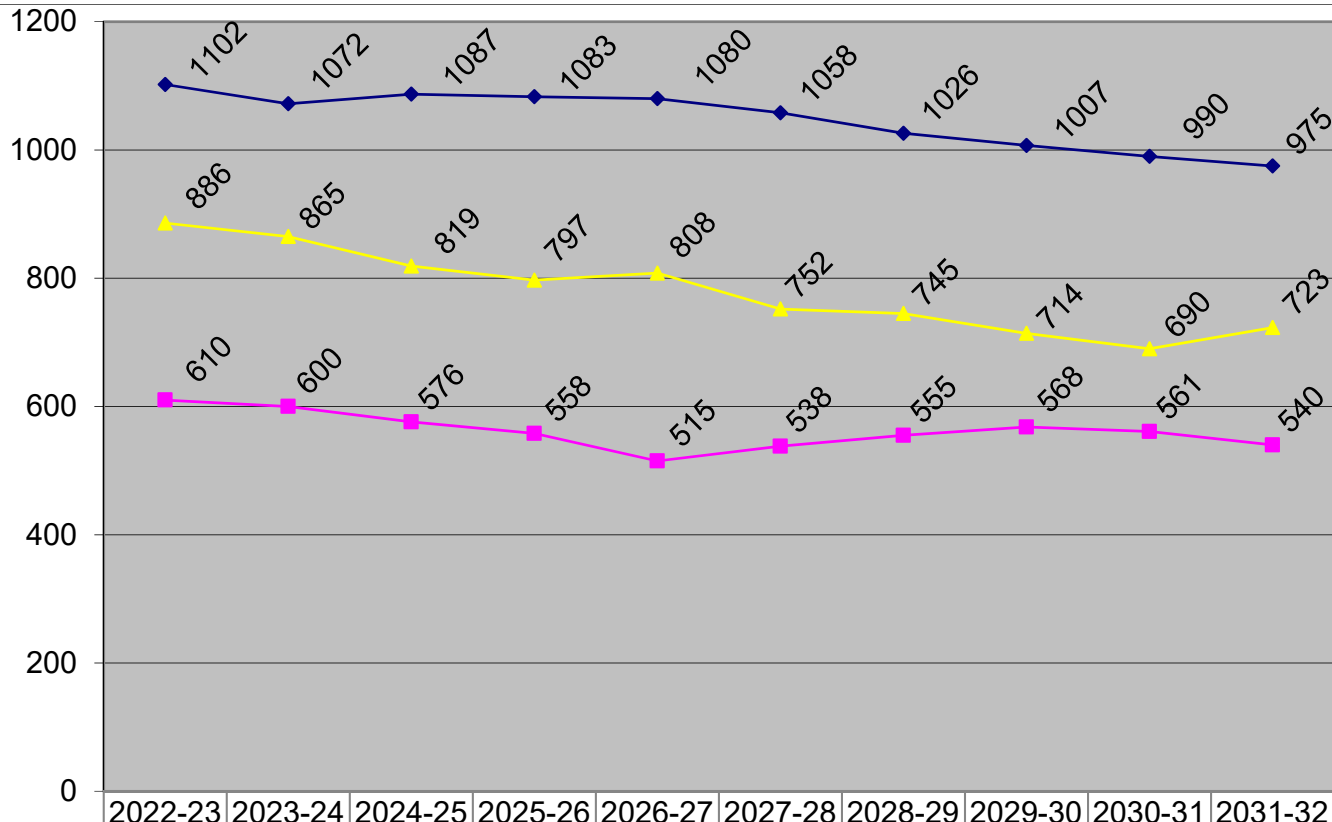
Year	K - 5	6 - 8	9 - 12	K - 12
Actual 2021	1,106	612	920	2,638
Projected 2022	1,102*	610*	886*	2,598*
2023	1,072	600	865	2,537
2024	1,087	576	819	2,482
2025	1,083	558	797	2,438
2026	1,080	515	808	2,403
2027	1,058	538	752	2,348
2028	1,026	555	745	2,326
2029	1,007	568	714	2,289
2030	990	561	690	2,241
2031	975	540	723	2,238

*denotes peak enrollment during 2022-2031

Source: December 2021-22 BOCES Long-Range Planning Study

Ten-Year Enrollment Projections

2021-22 Actual Data



Elementary: Projected 10-Year Decrease: 11.52%

HS: Projected 10-Year Decrease: 18.40%

MS: Projected 10-Year Decrease: 11.48%

	2022-23	2023-24	2024-25	2025-26	2026-27	2027-28	2028-29	2029-30	2030-31	2031-32
Elementary	1102	1072	1087	1083	1080	1058	1026	1007	990	975
Middle School	610	600	576	558	515	538	555	568	561	540
High School	886	865	819	797	808	752	745	714	690	723

◆ Elementary
■ Middle School
▲ High School

Source: December 2021-22 BOCES Long-Range Planning Study

ENROLLMENT TRENDS



PAST 10 YEARS:

- District enrollment has decreased by 584 students, or 18.1 percent, since 2011;
- The most significant decline was in the elementary (K - 5) grade configuration, with a loss of 287 students, or 20.6 percent;
- The Middle School (6 - 8) grades recorded a smaller loss of 135 students (18.1 percent);
- The High School (9 - 12) grades lost 162 students, or 15.0 percent

NEXT 10 YEARS:

- Declines are projected to continue during the next 10 years, with an additional loss of 400 students; or 15.2 percent, expected by 2031.
 - Elementary (K - 5): - 131 students (11.84 percent)
 - Middle (6 - 8): - 72 students (11.76 percent)
 - High School (9 - 12): - 197 students (21.41 percent)



Births in Sayville *2021-2022*

Births in the Sayville UFSD 2021 - 2022

Year	Sayville UFSD	Town of Islip
2006	209	4,867
2007	164	4,778
2008	181	4,737
2009	180	4,518
2010	151	4,453
2011	164	4,282
2012	149	4,258
2013	126	4,047
2014	142	4,115
2015	152	4,247
2016	153	4,363
2017	163	4,254
2018	145	4,143
2019	146	n/a

Source: NYS Dept. of Health

Note: The NYS DOH has not yet issued town birth data for 2019 & 2020 & school district birth data for 2020



Home Sales in SPS 2009-2020

Home Sales in the Sayville UFSD 2009 - 2020

Year	Number Sold	Median Price
2009	149	\$400,000
2010	106	\$397,500
2011	112	\$389,500
2012	114	\$352,000
2013	164	\$370,000
2014	167	\$383,000
2015	161	\$373,250
2016	172	\$408,000
2017	172	\$415,000
2018	166	\$464,375
2019	152	\$464,000
2020	156	\$480,000

Source: NYS Office of Real Property Services

- Housing data for the area encompassed by the Sayville Union Free School District indicated that in 2019 (latest available data), 94 percent of the total housing was occupied and six percent was vacant. Housing can be inhabited by the owner of the house or a renter. In 2019, approximately 76 percent of housing in the district was owner occupied and 24 percent was renter occupied.



Elementary K-5 Enrollment Projections

Projected Sayville UFSD Elementary Enrollment

Year	Cherry Avenue	Lincoln Avenue	Sunrise Drive	Total K - 5
Actual 2021	361	376	369	1,106
Projected 2022	355*	382	365*	1,102*
2023	337	380	355	1,072
2024	341	386*	360	1,087
2025	343	385	355	1,083
2026	350	380	350	1,080
2027	341	373	344	1,058
2028	330	361	335	1,026
2029	324	354	329	1,007
2030	318	347	325	990
2031	313	342	320	975

*denotes peak enrollment during 2022-2031



Projected Sections - Elementary

Projected Sayville UFSD Elementary Instructional Sections

Year	Cherry Avenue	Lincoln Avenue	Sunrise Drive	Total K - 5
Actual 2021	18	21	19	58
Projected 2022	18	21	19	58
2023	17	21	19	57
2024	17	21	19	57
2025	17	21	19	57
2026	18	21	18	57
2027	18	21	19	58
2028	18	21	19	58
2029	18	21	18	57
2030	17	21	18	56
2031	16	21	18	55

***includes self-contained special education sections**



Middle and High School Projections

Projected Sayville UFSD Middle & High School Enrollment

Year	Sayville MS (6 - 8)	Sayville HS (9 - 12)	Total Enrollment (6 - 12)
Actual 2021	612	920	1,532
Projected 2022	610*	886*	1,496*
2023	600	865	1,465
2024	576	819	1,395
2025	558	797	1,355
2026	515	808	1,323
2027	538	752	1,290
2028	555	745	1,300
2029	568	714	1,282
2030	561	690	1,251
2031	540	723	1,263

*denotes peak enrollment during 2022 - 2031



Enrollment Study Accuracy 2021-22

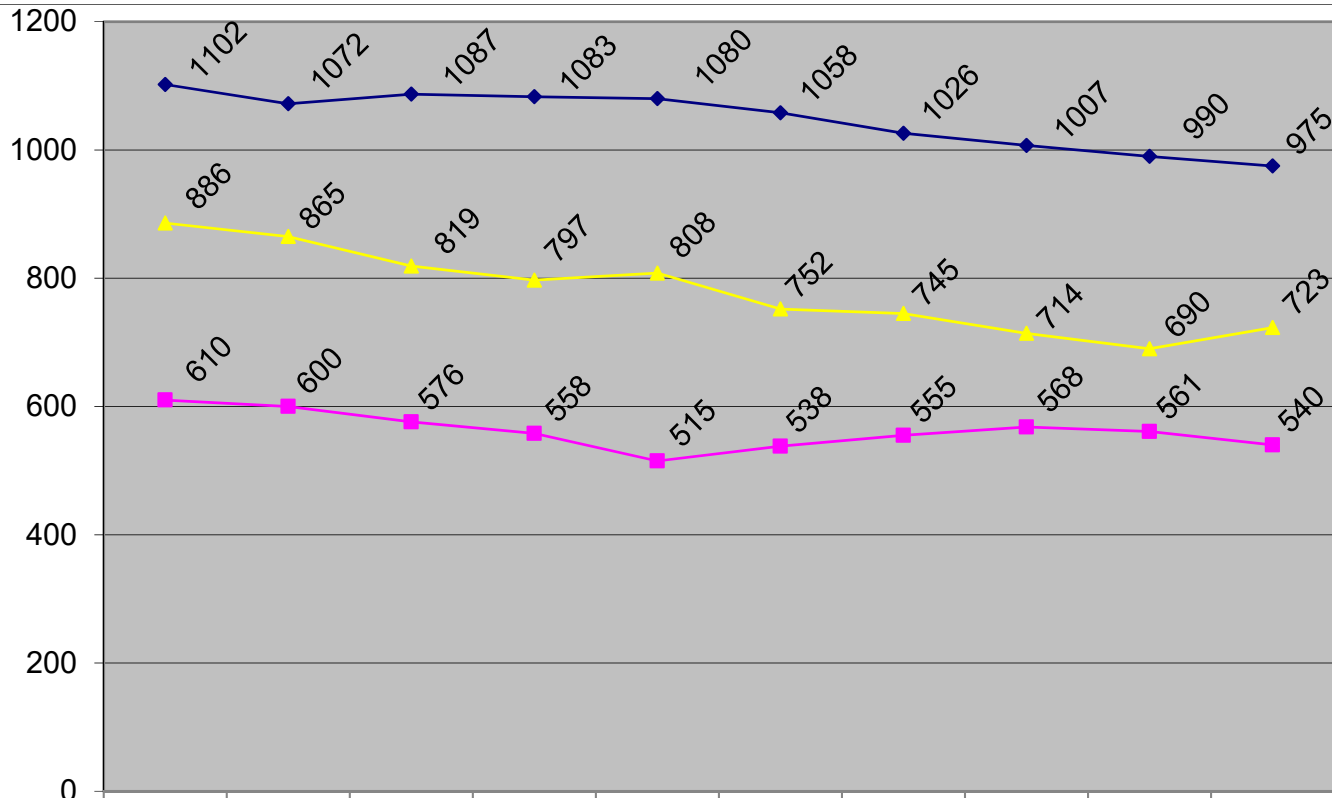
Accuracy of the Western Suffolk BOCES 2020-21 Projections for 2021-22 Report

Grades	2021-22 Actual	2021-22 Projected	Difference	Projected/Actual
K - 12*	2,638	2,661	23	100.9%
K - 5*	1,106	1,112	6	100.5%
6 - 8	612	624	12	102.0%
9 - 12	920	925	5	100.5%

***includes special education students**

Ten-Year Enrollment Projections

2021-22 Actual Data



Elementary: Projected 10-Year Decrease: 11.52%

HS: Projected 10-Year Decrease: 18.40%

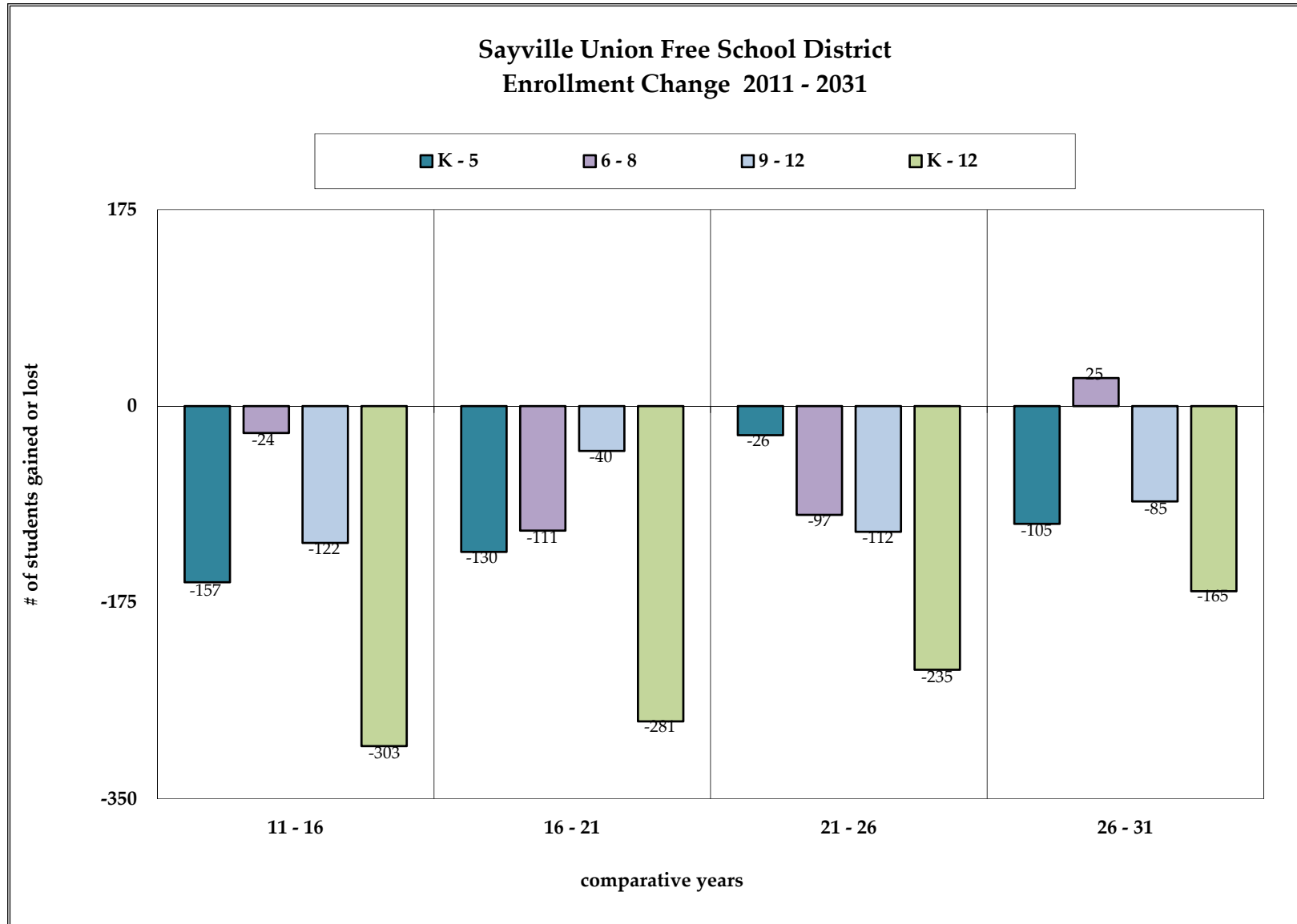
MS: Projected 10-Year Decrease: 11.48%

	2022-23	2023-24	2024-25	2025-26	2026-27	2027-28	2028-29	2029-30	2030-31	2031-32
Elementary	1102	1072	1087	1083	1080	1058	1026	1007	990	975
Middle School	610	600	576	558	515	538	555	568	561	540
High School	886	865	819	797	808	752	745	714	690	723

◆ Elementary
■ Middle School
▲ High School

Source: December 2021-22 BOCES Long-Range Planning Study

Sayville Public Schools *Twenty-Year Enrollment Change* *2011 - 2031*



2021-22 Enrollment Study

ENDNOTES

- This study serves to provide objective data that the Board of Education and administration can use in planning for the future
- The Board of Education and the Superintendent's efforts to plan for the future through sound management practices is fostered by comprehensive, objective data, such as contained within this Long Range Planning Study Update
- Planning is, however, a dynamic process that needs to reflect change
- Periodic updates allow the incorporation of subtle changes in district trends
- Dr. John E. Stimmel, Superintendent of Schools, provided access to district records. Dr. Sam Gergis, Assistant Superintendent for Business acted as district liaison, thus enabling the study to accomplish its objectives

*SAYVILLE PUBLIC SCHOOLS
LONG-RANGE PLANNING STUDY*

QUESTIONS?

