



LONG RANGE PLANNING STUDY

SAYVILLE UNION FREE SCHOOL DISTRICT 2022 – 23 UPDATE

*A Service of Western Suffolk BOCES
Division of Instructional Support Services
Office of School Planning & Research*

Sayville Union Free School District
Long Range Planning Study Update
Demographic and Enrollment Analysis
2022-23

BOARD OF EDUCATION

PresidentJohn Verdone
Vice President..... Thomas Cooley
Trustees Dr. James Bertsch, Jr.
..... Carl Cangelosi
..... Maureen Dolan
..... Kelly Sack
.....Christine Sarni
District ClerkJulie Vaccaro
District TreasurerEleni Costello

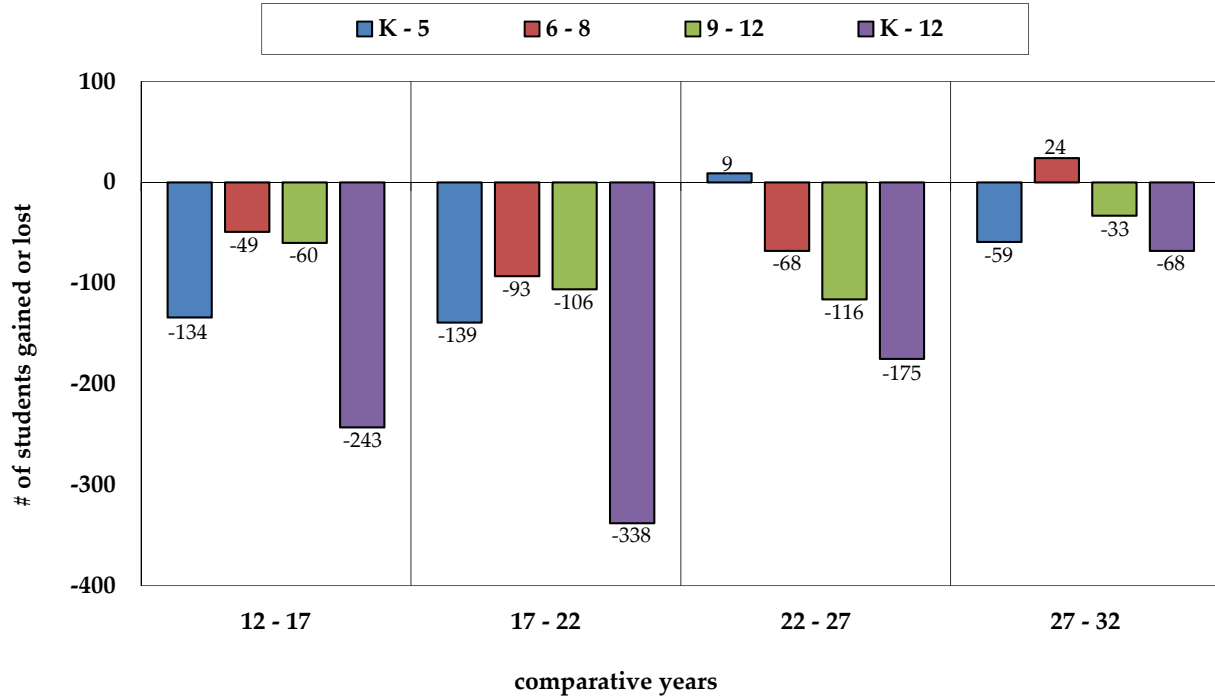
DISTRICT ADMINISTRATION

Superintendent of Schools..... Dr. Marc Ferris
Deputy Superintendent for Curriculum, Instruction & Staff Development..... Dr. Christine Criscione
Assistant Superintendent for Business Dr. Sam Gergis
Assistant Superintendent for Human ResourcesDr. Peter Branscombe
Director of Student Services..... Jillian Makris

BUILDING ADMINISTRATION

Cherry Avenue Elementary School..... Dr. Lisa Ihne, Principal
Lincoln Avenue Elementary School..... Christine Carlson, Principal
Sunrise Drive Elementary School Dr. James Foy, Principal
Sayville Middle School.....Dr. Joseph Castoro, Principal
..... Brian Decker, Assistant Principal
Sayville High SchoolRonald Hoffer, Principal
.....Stephanie Bricker, Sabine Loriston, Assistant Principals

Sayville Union Free School District Enrollment Change 2012 - 2032



The Sayville Union Free School District recorded a loss of 581 students, or 18.2 percent between 2012 and 2022, with losses recorded in all grade configurations. During the first half of the projection period, enrollment in the elementary (K - 5) grade configuration is expected to remain stable, while additional losses are projected in the middle (6 - 8) and high school (9 - 12) grades. During the latter half of the projection period, small losses are expected in the elementary (K - 5) and high school (9 - 12) grade configurations, while the middle (6 - 8) grades are expected to gain students. The projected 2032 K - 12 enrollment of 2,362 students represents an overall loss of 243 students, or 9.3 percent, when compared to the current enrollment.

INTRODUCTION

At the request of the Sayville Union Free School District, the *Western Suffolk BOCES Office of School Planning and Research* conducted this study to evaluate recent demographic influences and enrollment trends in order to prepare projections through the year 2032.

The Sayville Union Free School District is dedicated to meeting the educational needs of its students. The continued monitoring of enrollment trends will give the district the necessary data to consider a variety of educational issues. The foundation for this study is in keeping with the promotion of the basic district mission and philosophy.

The Board of Education and the Superintendent's efforts to plan for the future through sound management practices is fostered by comprehensive, objective data, such as contained within this Long Range Planning Study Update. This study serves to provide objective data that the Board of Education and Administration can use in planning for the future. Planning is, however, a dynamic process that needs to reflect change. Periodic updates allow the incorporation of subtle changes in district trends. This study provides an update to the demographic and enrollment study prepared for the district during the 2021-22 school year.

Barbara Graziano, School Planning Manager, oversaw all aspects of the study and served as principal researcher. Shu-ling Liu, Research Analyst, served as analyst and forecaster. Denise Facilla, Educational Planning Assistant, provided research assistance and prepared the report for printing.

Dr. Marc Ferris, Superintendent of Schools, provided access to district records. Dr. Sam Gergis, Assistant Superintendent for Business, provided direction on the study scope, compiled the necessary data, and acted as district liaison, thus enabling the study to accomplish its objectives.

Additionally, selected references and resources were used, as indicated below:

Center for Immigration Studies

Kearney, M.S., Levine, L.P. (2022). The Puzzle of Falling Births Since the Great Recession.

Journal of Economic Perspectives, Vol. 36 (1), 151-176

The State of The Nation's Housing 2022,

Joint Center for Housing Studies of Harvard University

Migration Policy Institute

National Alliance for Public Charter Schools

National Association of Realtors

National Catholic Educational Association

National Center for Education Statistics

National Center for Health Statistics, National Vital Statistics System

New York Charter Schools Association

New York State Association of Realtors

New York State Department of Health

New York State Education Department

New York State Office of Real Property Services

Newsday

NextLI powered by Newsday (map)

One Key MLS

Pew Research Center

Population Reference Bureau

The Wall Street Journal

Town of Islip Planning Department

United States Census Bureau

United States Department of Education

TABLE OF CONTENTS

ENROLLMENT: PAST, PRESENT & FUTURE

A. Births	1
B. Population	4
C. Housing.....	9
D. Non-Public School Enrollment	12
E. Enrollment Projection Methodology.....	14
F. Accuracy of Previous Projections	16
G. District Enrollment	17
H. Enrollment of Grade Configurations	19

APPENDICES

Appendix A - Historical and Projected Enrollment Worksheets

Appendix B - Enrollment Graphs

TABLES

Table 1 - Births in the Sayville UFSD 2007 - 2020	3
Table 2 - Number of Home Sales and Median Prices in Nassau and Suffolk Counties.....	9
Table 3 - Home Sales in the Sayville UFSD 2011 - 2021	10
Table 4 - Approved and Proposed Housing in the Sayville UFSD.....	11
Table 5 - NYS Non-Public & Charter School Enrollment.....	13
Table 6 - Accuracy of the Western Suffolk BOCES 2021-22 Projections for 2022-23.....	16
Table 7 - Projected Sayville UFSD Enrollment.....	17
Table 8 - Projected Sayville UFSD Elementary Enrollment	19
Table 9 - Projected Sayville UFSD Elementary Instructional Sections	22
Table 10 - Projected Sayville UFSD Middle & High School Enrollment	24

FIGURES

Figure 1 - New York State Births, 2001 - 2021	2
Figure 2 - Nassau & Suffolk County Births, 2000 - 2020.....	2
Figure 3 - Projected Age Structure of the U.S. Population.....	5
Figure 4 - U.S. Children in Immigrant Families	6
Figure 5 - Historical & Projected Ethnic Structure of the U.S. Population.....	7
Figure 6 - U.S. Charter School Enrollment	13

ENROLLMENT: PAST, PRESENT & FUTURE

Shifts in school enrollment occur due to fluctuations in the number of children being born, the number of families moving into a community and/or the number of children attending non-public or charter schools. The Sayville Union Free School District is expected to experience a decrease in enrollment during the projection period 2023 - 2032. This enrollment decline is accounted for by declining births and changing resident characteristics.

A. BIRTHS

Provisional data released by the *National Center for Health Statistics* shows there were 3,659,289 births recorded in 2021; this is the first increase in the number of births since 2014, and reflects a rise of one percent when compared to the previous year. Despite the increase, this is still lower than the number of births recorded in 2019. According to Beth Jarosz at the *Population Reference Bureau*, it is difficult to determine the impact of postponed pregnancies or changes in access to contraception during the Pandemic. Therefore, “the slight rise in 2021 doesn’t necessarily mean that the declining trend is over.”

Since the Great Recession (2007 - 2009), lower births have been attributed to several factors, including significant student loan debt and higher housing costs, which led to many young individuals living with their parents longer than they may have otherwise. This has contributed to young adults delaying marriage and childbearing. The percentage of women of childbearing age who are unmarried has grown from 58 percent in 2007 to 63 percent in 2018, while the median age at first marriage has grown from 22 years in 1980 to 28.1 years in 2020.

However, according to a recent study (*The Puzzle of Falling US Birth Rates since the Great Recession*), the declines may also reflect “broad societal changes that are hard to measure or quantify: possibilities include changing preferences for children, broader career options (and other aspirations) for women, and shifts in the nature of parenting.”

Another factor that has impacted birth rates has been a shift in fertility patterns amongst minority groups. Between 2000 and 2021, fertility rates have fallen for all racial/ethnic groups, with the most significant decline reported in the Hispanic segment, which dropped from a peak of 98 births per 1,000 women in 2006 to 64 births in 2021. Birth rates for NHOPI (Native Hawaiian or other Pacific Islander) women were the highest in 2021, with 72 births per 1,000 women, followed by Hispanic women (64 births), Blacks (58 births), Whites (55 births), AIAN (American Indian/Alaska Native) women (51 births) and Asian women (50 births).

Birth rates were highest for women aged 30 - 34 (97.3 births per 1,000 women) in 2021, followed by women aged 25 - 29 (92.0), and women aged 20 - 24 (61.5). It is noted that prior to 2016, women between the ages of 25 - 29 had the highest birth rate. However, the birth rate for teenagers (15 - 19) dropped to a record low of 14.4 (per 1,000 women) in 2021, reflecting a decline of 77 percent when compared to the peak birth rate of 61.8 for this group recorded in 1991. These trends are reflected in the average age of mothers at first birth, which reached an historic high of 27.1 years in 2020, compared to 24.9 years in 2000.

Consistent with national birth trends, an overall birth decline (17 percent) has been recorded in New York State during the 20-year historical period 2001 - 2021. However, provisional data for 2021 indicates a slight uptick (0.6 percent) in births when compared to the prior year, with 210,359 births recorded in 2021.

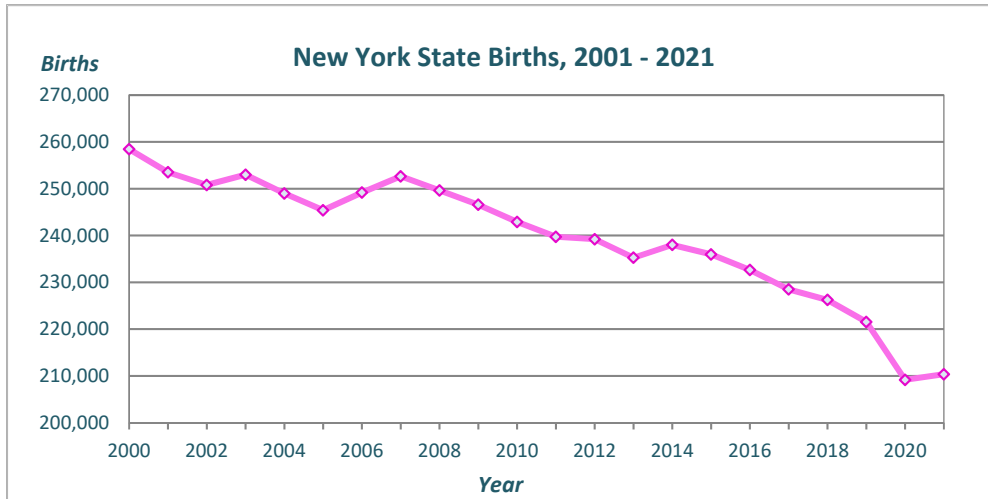


Figure 1 - New York State Births, 2001 - 2021
*2021 data is provisional

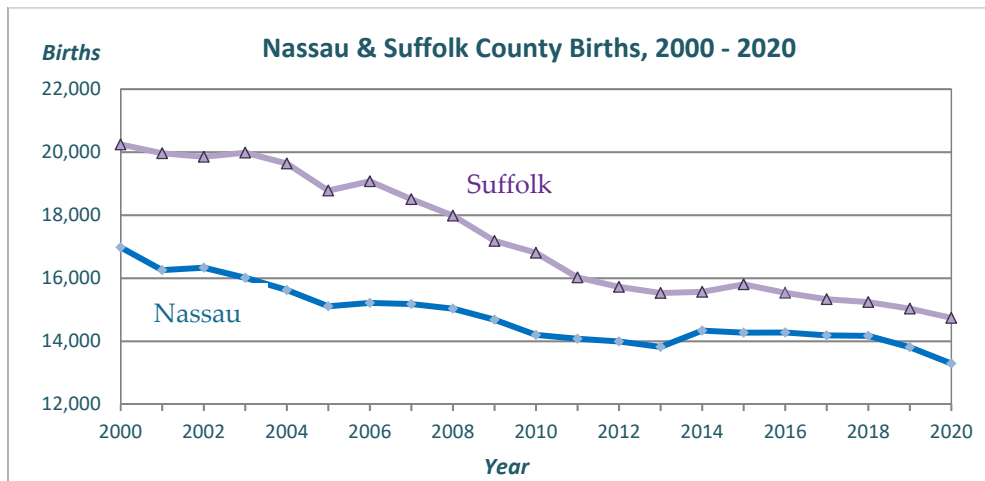


Figure 2 - Nassau & Suffolk County Births, 2000 - 2020
Note: 2021 county birth data is not yet available

Figure 2 shows Nassau County recorded 16,979 births in 2000. Since then, births have declined almost 22 percent, with 13,294 births recorded in 2020; this is the lowest level of the historical period. Births in Suffolk County remained stable between 2000 and 2003. Since then, births have declined 26 percent, with 14,742 births recorded in 2020; this is also the lowest level of the historical period.

As shown in Table 1, births in the Sayville Union Free School District peaked 2008 and 2009, with 181 and 180 births recorded, respectively, in those years. However, beginning in 2010, births have been at a lower level, ranging within 126 - 167 each year through 2020 (district birth data for 2020 is provisional and 2021 data is not yet available).

Table 1 - Births in the Sayville UFSD 2007 - 2020

Year	Sayville UFSD	Town of Islip
2007	164	4,778
2008	181	4,737
2009	180	4,518
2010	151	4,453
2011	164	4,282
2012	149	4,258
2013	126	4,047
2014	142	4,115
2015	152	4,247
2016	153	4,363
2017	163	4,254
2018	145	4,143
2019	146	4,035
2020	167	n/a

Source: NYS Dept. of Health

Note: The NYS DOH has not yet issued town birth data for 2020
& school district birth data for 2021

B. POPULATION

According to *2020 Census* data, there were 331.5 million people living in the United States as of April 2020; this is an increase of 22.7 million people, or 7.4 percent, since the *2010 Census*. This represents the slowest growth for a decennial census since the Great Depression in the 1930's. According to the *Census Bureau*, "Slower population growth has been a trend in the United States for several years, the result of decreasing fertility and net international migration, combined with increasing mortality due to an aging population." This slower growth rate is also reflected in recently released *Census* estimates, which indicate the population grew by only 0.1 percent in 2021. The *Census Bureau* reported that, "the year 2021 is the first time since 1937 that the U. S. population grew by fewer than one million people, featuring the lowest numeric growth since at least 1900, when the *Census Bureau* began population estimates."

New York State's population totaled approximately 20.2 million people as of the *2020 Census*, reflecting a gain of approximately 823,000 people (4.2 percent), when compared to the *2010 Census*. New York is the fourth most populous state in the country, following California (39.5 million people), Texas (29.1 million people) and Florida (21.5 million people). However, recent *Census* estimates (2021) indicate that New York State's population now totals approximately 19.8 million people, reflecting a loss of more than 300,000 residents (-1.6 percent) since the *2020 Census*. This is the result of a net domestic migration loss of approximately 350,000 residents, meaning more residents moved to other states than moved in. This trend had previously been somewhat offset by international migration; however, as a result of Covid restrictions, net foreign immigration was reduced to the lowest level in 60 years.

Nassau County's population totaled approximately 1.4 million people as of the *2020 Census*, reflecting a gain of more than 56,000 residents, or 4.2 percent, between 2010 and 2020; however, recent 2021 *Census* estimates indicate a loss of more than 3,000 residents since the *2020 Census*. Consistent with State trends, this loss was the result of a domestic migration loss of nearly 4,000 people.

Suffolk County recorded a gain of approximately 32,600 residents, or 2.2 percent, between the 2010 and 2020 *Censuses*, with a population of more than 1.5 million people in April 2020. Recent 2021 *Census* estimates indicate an additional increase of more than 2,200 residents since the *2020 Census*. This is the result of domestic migration gains, as eastern locations of Suffolk County received an influx of New York City residents during the Pandemic.

Nassau and Suffolk Counties rank sixth and fourth, respectively, in population among New York's 62 counties.

Between 2010 and 2020, the Town of Islip recorded a gain of 4,395 residents, or 1.3 percent. The population in the Sayville School District remained stable (loss of 82 residents) during the same period, with approximately 18,498 residents living within the district in 2020.

According to *Census Bureau* projections, the year 2030 will mark a “demographic turning point for the United States.” In that year, all baby boomers will be 65 years of age or over and one in five Americans will be of retirement age. It is also projected that by the year 2034, older adults will outnumber children under age 18 for the first time in history.

As shown in Figure 3, the segment of the population 65 years and over in the United States represented 12.4 percent of the total population in 2000; this age segment grew to an estimated 16 percent in 2020 and is expected to grow to more than 23 percent of the total population in 2060. The 45 - 64 age segment is also projected to grow, from 22 percent in 2000 to 24 percent in 2060. However, the percentage of residents under 18 years of age is projected to decrease from approximately 26 percent of the population in 2000 to 20 percent in 2060, while the 18 - 44 age segment is expected to account for nearly 33 percent of residents in 2060, compared to 40 percent in 2000.

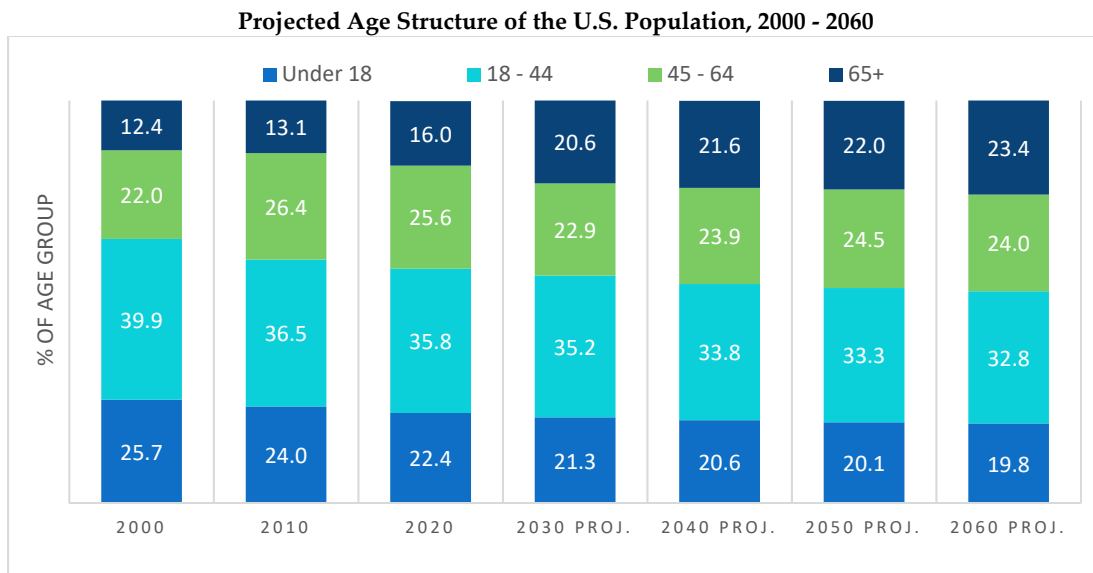


Figure 3 - Projected Age Structure of the U.S. Population
Source: Census Bureau

Census Bureau estimates indicate that in New York State, between 2010 and 2020, the 19 and under segment decreased from approximately 25 to 23 percent of the population; however, during the same period, the segment of residents aged 65-and older grew from 13.5 to 17.5 percent.

On Long Island, population trends correspond with trends seen in New York State and the nation. Both Nassau and Suffolk Counties saw a decline in the number of residents aged 19 and under between 2010 and 2020. In 2010, nearly 26 percent of Nassau’s population and 27 percent of Suffolk’s population was of this age; by 2020, this group had shrunk to 24.0 percent of the population in Nassau County and 23.7 percent in Suffolk County. However, there has been a significant increase in the share of the senior population, which is reflected in the median age of Long Islanders. Nassau County’s median age in 2010 was 41.1 years, but rose to 41.9 years in 2020; Suffolk County noted an increase from 39.8 years in 2010 to 41.7 years in 2020. The 2020 median age in both counties is higher than New York State’s median age (39.0 years) and the nation’s (38.2 years) median age.

Despite recent declines due to Covid restrictions, immigration remains a large contributor to population growth in the United States. According to the *2020 American Community Survey*, foreign-born residents in the United States account for almost 14 percent of the total population. It is estimated that half of these immigrants were born in Latin America. Foreign-born residents in New York State represent approximately 22 percent of the total population, while the foreign-born in Nassau and Suffolk Counties comprise 22 percent and 15 percent of the populations, respectively. Of the foreign-born population on Long Island, approximately 50% in Nassau County and nearly 58% in Suffolk County were born in Latin America. In addition, there has been significant growth in the Asian segment in the United States, as well as in New York State and on Long Island. In 2020, foreign-born residents from Asian countries accounted for approximately 31 percent of the immigrant population in the United States and nearly 30 percent of the foreign-born population in New York State; on Long Island, 32 percent and 21 percent of the immigrant populations in Nassau and Suffolk Counties, respectively, were born in Asian countries. According to *Census Bureau* estimates, in 2020, the foreign-born comprised approximately 3.8 percent of the resident population in the Sayville School District.

The *Census Bureau* reported that more than 18 million children under age 18 lived with at least one foreign-born parent in the United States in 2020.; this accounts for more than 26 percent of children of this age. The five states with the greatest numbers of children under age 18 living with immigrant parents were California (4 million), Texas (2.4 million), New York (1.4 million), Florida (1.4 million) and New Jersey (769,000).

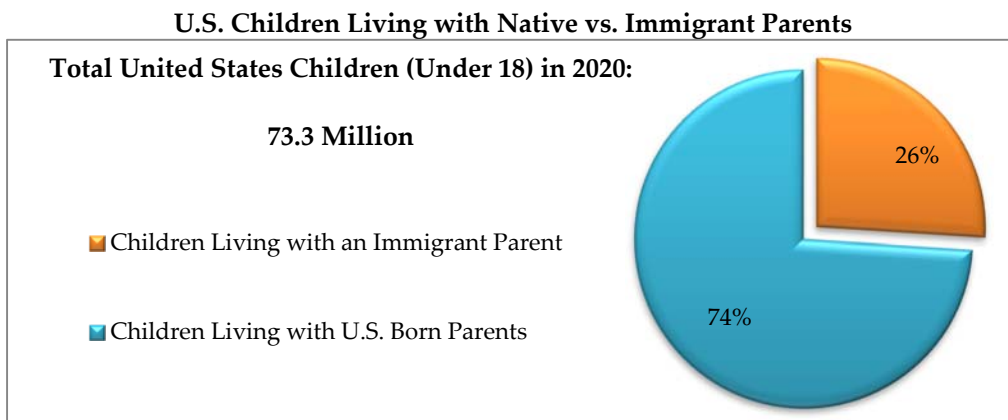


Figure 4 - U.S. Children in Immigrant Families
Source: *Census Bureau*

Recent trends in immigration have contributed to changes in the ethnic structure of the population in the United States. These trends, combined with the projected loss in the White population, due to mortalities as the baby boom cohort reaches the oldest ages, has resulted in an increasingly diverse population.

As shown in Figure 5, nearly 58 percent of the population was White in 2020, down from approximately 64 percent in 2010 and 69 percent in 2000. The White segment is expected to continue decreasing through 2060, while growth is forecasted in each of the minority groups. By 2060, the combined minority population is expected to account for approximately 56 percent of the total population, up from 42 percent in 2020. According to the 2020 Census, Hispanics were the largest minority group, comprising nearly 19 percent of the population, followed by Blacks (12.1 percent), Asian/others (7.3 percent) and those identifying themselves as two or more races (4.1 percent). The Hispanic segment is expected to continue to be the largest minority group, accounting for approximately 29 percent of the total population by 2060. The population of people identified as two or more races is projected to more than double by 2060, when compared to 2020.

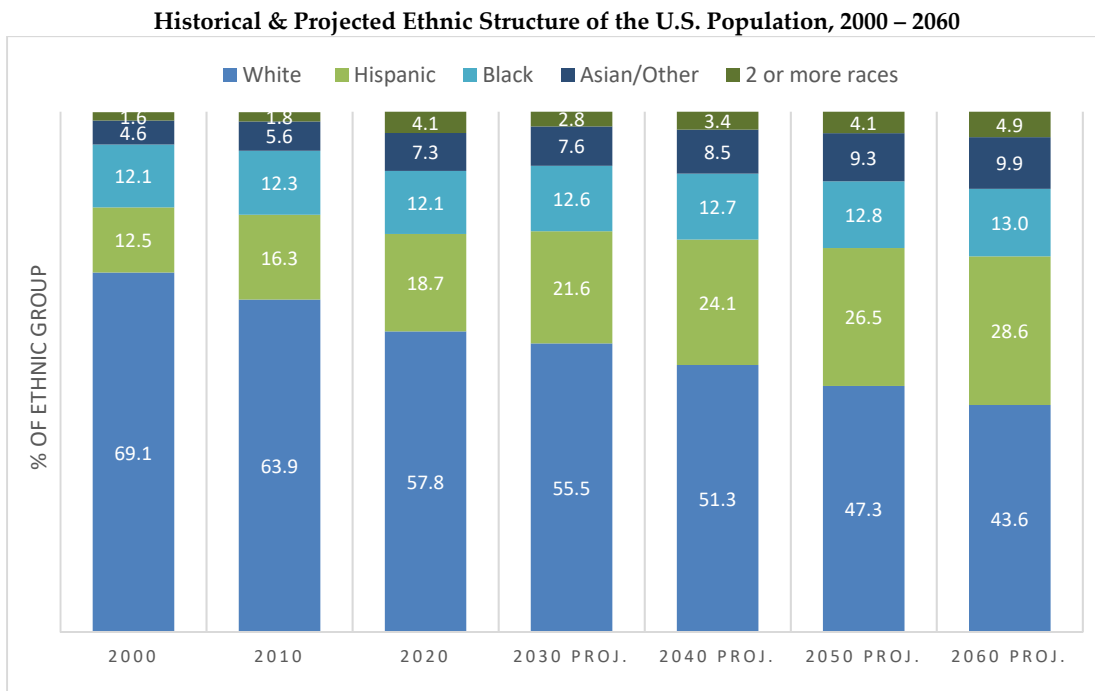


Figure 5 - Historical & Projected Ethnic Structure of the U.S. Population
Source U.S. Census Bureau

The ethnic composition within New York State has shifted between 2010 and 2020. According to 2020 Census data, the White segment comprised approximately 53 percent of the population in 2020, down from 58 percent in 2010, while the minority segments comprised approximately 47 percent of State residents. Hispanics are the largest minority group at nearly 20 percent, followed by Blacks (13.7 percent), Asian/others (10.8 percent) and those identifying themselves as two or more races (3.6 percent). There are six states that are “majority-minority,” which include California, Hawaii, Maryland, New Mexico, Texas and Nevada.

Long Island’s population has also experienced demographic changes between 2010 and 2020. In Nassau County, the White segment comprised approximately 56 percent of the population in 2020, down from nearly 66 percent in 2010, while the minority segments comprised approximately 44 percent of County residents. Hispanics are the largest minority group at more than 18 percent, followed by Asian/others (12.7 percent), Blacks (10.5 percent), and those identifying themselves as two or more races (2.6 percent).

In Suffolk County, the White segment comprised approximately 63 percent of the population in 2020, down from nearly 72 percent in 2010, while the minority segments comprised approximately 37 percent of County residents. Hispanics are the largest minority group at nearly 22 percent, followed by Blacks (7.0 percent), Asian/others (5.1 percent) and those identifying themselves as two or more races (2.7 percent).

The ethnic composition of the resident population within the Sayville Union Free School District has remained relatively stable between 2010 and 2020. In 2020, Whites accounted for 88 percent of residents, while the Hispanic segment increased from 4.5 to 6.5 percent. In 2020, Asian/others, Blacks and those identifying as two or more races, each represented less than 2.5 percent of the population.

C. HOUSING

According to the *New York State Association of Realtors (NYSAR)*, “the second quarter of 2022 marked a turning point in the U.S. housing market, as rising inflation, skyrocketing sales prices, and surging mortgage interest rates finally caught up to market participants.” In September, the monthly average of a 30-year fixed mortgage rate reached the highest level in 14 years, while the median price of a single family home increased more than 14 percent in the second quarter, when compared to a year ago.

Data from the *NYSAR* indicates closed sales in New York State were down 7.1 percent in the second quarter of 2022, when compared to the same quarter in the prior year, while the median sale price increased to \$415,000, representing a year-over-year increase of 13.5 percent. While median sale prices are expected to remain at an elevated level, the rate of appreciation is expected to slow due to rising mortgage rates. Meanwhile, the number of homes for sale fell by 14.3 percent in the second quarter, when compared to the prior year. A strong housing market generally offers a 6.5-month supply of inventory; however, data from *NYSAR* indicates that there was a 3.1-month supply of available inventory in the second quarter. Inventory is expected to remain at a lower level as existing homeowners may be reluctant to move and then be forced to borrow at a much higher rate for their next home.

In the second quarter of 2022, the residential real estate markets in Nassau and Suffolk Counties posted quarterly year-to-year sales losses of 11.6 and 9.1 percent, respectively. In Nassau County, there were 3,375 completed home sales reported for the quarter, compared to 3,818 the previous year; in Suffolk County, there were 4,081 completed home sales reported, compared to 4,491 the previous year. However, the median sale price increased in both Counties in the second quarter, with a gain of 11.8 percent in Nassau County and 10.8 percent in Suffolk County. Growth in the median sale prices appears to be the result of a tight supply of available inventory.

Table 2 - Number of Home Sales and Median Prices in Nassau and Suffolk Counties

County	2 nd Qtr. 2022		2 nd Qtr. 2021		Change	
	# Sales	Median Price	# Sales	Median Price	# Sales	Median Price
Nassau County	3,375	\$690,000	3,818	\$635,000	-11.6%	8.7%
Suffolk County	4,081	\$550,000	4,491	\$495,000	-9.1%	11.1%

Source: *NYSAR*

Despite surging home prices, the homeownership rate for the second quarter of 2022 increased to 65.8 percent; this compares to the ten-year (2013-2022) low of 62.9 percent recorded in 2016. In the second quarter of 2022, the homeownership rate was highest among householders aged 65+ (79.3 percent), followed by the 55 - 64, 45 - 54 and 35 - 44 age segments, with homeownership rates of 75.1, 70.6 and 61.9 percent, respectively. Young adults under the age of 35 recorded the lowest homeownership rate at 39.1 percent in the second quarter of 2022. However, this age group posted the largest increase of any group between the first quarter of 2020 and the second quarter of 2022, up 1.8 percentage points during this period. Nevertheless, recent interest rate hikes and continued price increases are expected to hamper further growth in the share of first-time home buyers entering the market.

As shown in Table 3, housing turnover was at the lowest level of the historical period (2011 - 2021) in 2011 when 112 units were sold. Subsequently, from 2013 through 2021, sales have fluctuated within 151 - 172 each year. The median sale price increased to \$515,000 in 2021; this is the highest level of the historical period and reflects a gain of more than 46 percent when compared to the period low of \$352,000 recorded in 2012.

Table 3 - Home Sales in the Sayville UFSD 2011 - 2021

Year	Number Sold	Median Price
2011	112	\$389,500
2012	114	\$352,000
2013	164	\$370,000
2014	167	\$383,000
2015	162	\$373,250
2016	172	\$408,000
2017	172	\$415,000
2018	166	\$464,375
2019	151	\$465,000
2020	157	\$486,000
2021	172	\$515,000

Source: NYS Office of Real Property Services

According to the *Joint Center for Housing Studies of Harvard University*, “rental markets across the nation bounced back quickly from the pandemic-induced downturn, with rents rising at a record pace and vacancy rates hitting new lows.” Rents were up 12 percent (in professionally managed apartments) in the first quarter of 2022, when compared the previous year. Meanwhile, rental vacancies fell during each quarter of 2021; the vacancy rate of 5.6 percent in the fourth quarter was the lowest quarterly rate reported since 1984.

Several factors have contributed to continued growth in rental households, including the large segment of young adults now in their 20s and 30s who are forming new households, the distribution of federal pandemic relief funds and deferrals of student loan payments. In addition, factors impacting the housing market such as rising interest rates, escalating home prices and the limited supply of homes for sale have resulted in some would-be home buyers staying in rental housing.

In 2020, approximately 74 percent of occupied housing in the Sayville School District was owner occupied and almost 26 percent was renter occupied. This compares to Suffolk County, with approximately 81 percent of housing units occupied by an owner and 19 percent occupied by a renter.

The *Planning Department of the Town of Islip* was contacted regarding the status of current building projects, as well as any new proposals before the Planning Board. The Town reported on the following:

Table 4 - Approved and Proposed Housing in the Sayville UFSD

Project name	Location	#of Units	Status
<i>Town of Islip</i>			
Daniel & Lisa Martin	66 Tyler Ave.	1 existing, 1 new SF	Conditions of subdiv. not completed; no bldg. permit yet
Green Properties & Assoc.*	256 & 268 Greene Ave.	1 existing, 1 new SF	Complete
Village Green at Sayville	NYS Route 120	59 apts.	Pending approval, no further action
D. Wandelt	128 Greeley Ave.	1 existing; 1 new SF	No approval yet

Source: Town of Islip Planning Department

*indicates change since last report

BOLD = new since last report

D. NON-PUBLIC SCHOOL ENROLLMENT

Census Bureau data indicates that there were 5.3 million K - 12 students, or 10.3 percent of all school-age children, attending private schools in the United States during the 2020-21 school year (latest available data). This represents an increase of more than 16 percent when compared to the prior year. This increase has been attributed to the Pandemic, as some parents opted for full-time in-person instruction offered at most private schools. Prior to the Pandemic, private school enrollment had declined by approximately 112,000 students between 2010 and 2019.

Non-public school enrollment in New York State had been steadily declining in recent years. However, according to data from the *NYS Education Department*, private school enrollment stabilized in the 2021-22 school year, when approximately 382,000 students, or 13.5 percent of school age children, were enrolled in private schools. However, private school enrollment declined slightly on Long Island between the 2020-21 and 2021-22 school years, with decreases of 1.3 and 1.2 percent, respectively, in Nassau and Suffolk Counties. In 2021-22, 11.9 percent of Nassau County school age children attended non-public schools, while Suffolk County recorded a smaller non-public attendance rate of 4.8 percent.

In 2021-22, 41 Sayville School District resident students (1.5 percent) attended non-public schools. Non-public school enrollment has steadily declined since 2006, when 143 children, or 3.9 percent of district resident students, attended private schools.

After several decades of declining enrollments, the *National Catholic Educational Association* reported that Catholic schools recorded a year-to-year increase of 3.8 percent, or approximately 62,000 students, for the 2021-22 school year. This appears to be reflective of parental dissatisfaction with educational programs offered at local public schools during the Pandemic. In addition, it was reported that Catholic schools also benefited from an increase in school choice programs; currently 33 states and the District of Columbia offer various types of school choice options.

Growth in the number of charter schools throughout the United States has impacted private school enrollment. Charter schools offer a tuition-free alternative to traditional public-school settings, while often providing individualized instruction offered in many private schools. The *National Alliance of Charter Schools* reported that charter schools currently enroll more than 3.4 million children, or 7.2 percent of all public school students, in approximately 7,700 schools. As shown in Figure 7, data from the *National Alliance for Public Charter Schools* shows that charter school enrollment has more than tripled between 2005 and 2019 (latest available data).

U. S. Charter School Enrollment

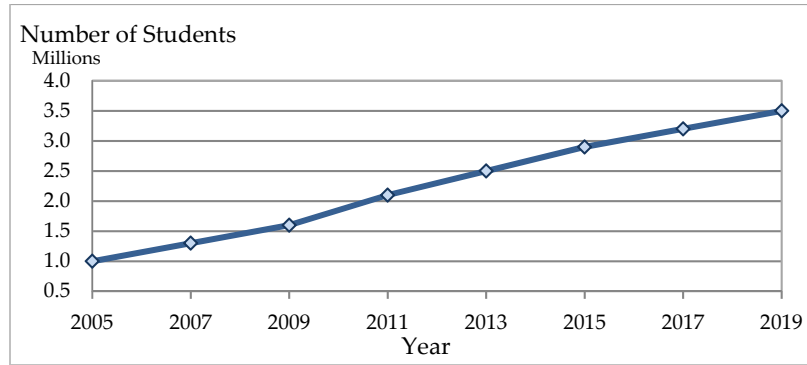


Figure 6 - U.S. Charter School Enrollment

According to the *New York State Education Department*, in 2021-22, there were 357 charter schools serving over 173,000 students in New York State. As shown in Table 5, charter school enrollment has grown by more than 24 percent since the 2017-18 school year. Also shown is that total K -12 enrollment has declined by 6.3 percent during this period, while non-public school enrollment has declined 4.8 percent,

Table 5 - NYS Non-Public & Charter School Enrollment

School Year	Public Schools	Charter Schools	Non-Public Schools	Total K - 12 Enrollment
2017-18	2,483,316	139,563	401,799	3,024,678
	82.1 %	4.6%	13.3%	
2018-19	2,451,499	147,422	398,228	2,997,149
	82.1%	4.9%	13.3%	
2019-20	2,421,858	159,211	390,779	2,971,848
	81.8%	5.4%	13.1%	
2020-21	2,342,473	170,500	382,644	2,895,617
	80.9%	5.9%	13.2%	
2021-22	2,277,333	173,335	382,499	2,833,167
	80.4%	6.1%	13.5%	

Source: NYSED

Note: Data does not include BOCES SPED students

Currently, there are six charter schools in operation on Long Island, located in Roosevelt, Hempstead (2), Uniondale, Riverhead and Wyandanch. An additional charter school, to be located in Central Islip, has received state approval to open in September 2023.

E. ENROLLMENT PROJECTION METHODOLOGY

The *Cohort Survival Technique* was used to project the district's enrollment patterns for the next ten years. Three fundamental inputs were essential:

1. Actual enrollment by grade for 2012 - 2022 for the district [Appendix A-2] and each school [Appendix A-9, A-11, A-13, A-16, A-17].
2. Grade-to-grade retention (migration) ratios for each two-grade transition to grades 1 - 12 for the past ten years for the district [Appendix A-2] and each school [Appendix A-9, A-11, A-13, A-16, A-17].
3. Projected kindergarten entering cohorts based on the number of live births in Suffolk County, with consideration given to school district births, five years before each year projected [Appendix A-4].

The *Cohort Survival Model* takes into consideration the normal community processes that affect school enrollment, which include:

1. The number of births and fertility rates
2. Typical in and out migration
3. Transfers to and from non-public schools
4. Population variations
5. Resident family characteristics

The enrollment projections contained within this study are based on assumptions generated through the demographic analysis. *This analysis led to the following conjectures:*

1. Population will remain stable due to limited new residential development within the district. The turnover of approximately 150 - 175 homes each year is anticipated to continue.
2. With the exception of 2025, kindergarten cohorts are expected to be a lower level than those seen during the past ten years.
3. Non-public school enrollment is expected to remain at between 1 - 2 percent of district resident students.

The *Cohort Survival Model* is very accurate in forecasting future enrollment patterns, but the occurrence of certain conditions would warrant modifications in these projections. *These conditions include:*

- A level of new housing activity or a change in the level of housing turnover that is significantly higher or lower than that experienced by the district during the past three years.
- Expansion, consolidation, closing or the formation of new non-public or charter schools.
- Major sociological changes or changed values/attitudes affecting anticipated family size and birthrate.
- Household characteristics that significantly differ from the past three to five years, including the number of persons per household and the age of household occupants.
- A major local or national crisis resulting in a significant change to economic conditions that affect employment, finance and housing in a manner that deviates from the past three to five years.

It is important for the reader to understand the nature of enrollment projections. Regardless of the methodology applied to produce projections, *all outcomes fall into three categories of reliability:*

Category 1 - Those projections based on students already enrolled in the system are the most reliable projections.

Category 2 - Those projections based on documented births are slightly less reliable than those of Category 1.

Category 3 - Those projections based on estimates of future births are the least reliable.

Therefore, the most reliable projections are those calculated for the periods closest in time. Projections for periods further out in time are less reliable, particularly those beyond five years from the year of the study. The five-year period (2023 - 2027) projections are those best used in district planning and decision making. That is because this period consists mainly of Category 1 projections.

It is noted that the overall enrollment projections produced by Western Suffolk BOCES generally fall within a 4 percent margin of error. The greatest discrepancies in projections occur in the smallest subsets of those projections. For example, the projections for the district as a whole are likely to be the most accurate, while the projection of a building's particular grade level in a specific year is likely to be the least accurate. It is recommended that updates to projections be continued on a periodic basis to maintain modifications required by subtle shifts in migration trends and demographic factors.

F. ACCURACY OF PREVIOUS PROJECTIONS

A comparison was made between the enrollment projections presented in the 2021-22 *Western Suffolk BOCES* study and the actual enrollment observed in the 2022-23 school year. As shown in *Appendix A-1* and Table 6, the 2021-22 study projected the 2022-23 K - 12 enrollment at 2,598 students, while there were actually 2,605 students enrolled. This projection was within 7 students of the actual enrollment, reflecting accuracy within 0.3 percent.

The projections for each grade level showed variations ranging from 1 - 8 students of the actual enrollment. The K - 5 grade configuration was projected within 3 students, or 0.3 percent; the 6 - 8 grade configuration was projected within 9 students, or 1.5 percent; and the 9 - 12 grade configuration was projected within 5 students, or 0.6 percent, when compared to the actual enrollment.

Table 6 - Accuracy of the Western Suffolk BOCES 2021-22 Projections for 2022-23

Grades	2022-23 Actual	2022-23 Projected	Difference	Projected/Actual
K - 12*	2,605	2,598	-7	99.7%
K - 5*	1,105	1,102	-3	99.7%
6 - 8	619	610	-9	98.5%
9 - 12	881	886	5	100.6%

*Includes special education students

G. DISTRICT ENROLLMENT

The Sayville Union Free School District educates students within grades K - 12 in five district schools. Grades K - 5 are housed at Cherry Avenue, Lincoln Avenue and Sunrise Drive Elementary Schools; grades 6 - 8 are housed at Sayville Middle School and grades 9 - 12 are housed at Sayville High School.

Table 7 presents the current and projected enrollment through 2032 for the district and each grade configuration. It is shown that the elementary (K - 5) grades are expected to reach a projection period peak enrollment of 1,125 students in 2026, while the middle (6 - 8) and high school (9 - 12) grade configurations are forecasted to be at their peak enrollments next year, in 2023. District enrollment (K - 12) is also expected to be at its projection period peak in 2023, when 2,547 students are anticipated; this is 58 fewer students than are currently enrolled.

Table 7 - Projected Sayville UFSD Enrollment

Year	K - 5	6 - 8	9 - 12	K - 12
Actual 2022	1,105	619	881	2,605
Projected 2023	1,077	609*	861*	2,547*
2024	1,090	583	823	2,496
2025	1,111	566	806	2,483
2026	1,125*	528	814	2,467
2027	1,114	551	765	2,430
2028	1,101	561	753	2,415
2029	1,098	571	725	2,394
2030	1,093	562	709	2,364
2031	1,066	573	732	2,371
2032	1,055	575	732	2,362

*denotes peak enrollment during 2023 - 2032

District enrollment [Appendix A-2, A-6] consisted of 3,186 students in grades K - 12 in 2012; this was the historical peak enrollment. Subsequently, losses in nine of the last ten years led to the current enrollment of 2,605 students in 2022. A loss of 581 students, or 18.2 percent, is noted during the historical period.

Smaller losses are projected during the next ten years. The forecasted 2032 enrollment of 2,362 students represents a loss of 243 students, or 9.3 percent, when compared to the current enrollment.

The projected enrollment can be attributed to several factors:

- ☞ **First**, the kindergarten enrolled more than 200 students in four years of the historical period; there are 185 students enrolled in 2022. Kindergarten enrollment is projected to be at a peak of 195 students in 2025; in all other years through 2032, kindergarten cohorts are expected to range within 166 - 177 students [Appendix A-4].
- ☞ **Second**, the incoming kindergarten class was smaller than the exiting twelfth grade class of the previous year in each of the last ten years. This trend is expected to continue, with losses of between 1 - 64 students each year through 2032, due to this displacement [Appendix A-8].
- ☞ **Third**, migration ratios show year-to-year fluctuations. On average, the district gains or maintains students in transition to most grades; average losses are recorded to grades 5, 7, 9 and 10. However, any gains in transition will be minimized by the losses through displacement [Appendix A-2].
- ☞ **Fourth**, the average grade level size decreased in grades K - 12 during 2017 - 2022 as compared to 2012 - 2017. Grade level size decreases are anticipated in grades 1 - 12 during 2022 - 2027; grade level size decreases are anticipated in grades K - 2 and 8 - 12 during 2027 - 2032 [Appendix A-8].

H. ENROLLMENT OF GRADE CONFIGURATIONS

ELEMENTARY GRADES (K - 5) ENROLLMENT *[Appendix A-3, A-7]*

The elementary enrollment consisted of 1,378 students in grades K - 5 in 2012; this was the historical peak enrollment. Subsequently, losses in eight of the last ten years led to the current enrollment of 1,105 students in 2022. A loss of 273 students, or 19.8 percent, is noted during the historical period.

Enrollment is expected to remain stable during the next five years, followed by a loss of 59 students during the latter half (2027 - 2032) of the projection period. The 2032 enrollment of 1,055 students represents an overall loss of 50 students, or 4.5 percent, when compared to the current enrollment.

Table 8 shows the projected enrollment in the district’s elementary schools through 2032. It is shown that Lincoln Avenue Elementary School is expected to reach its projection period peak enrollment in 2025, while Cherry Avenue and Sunrise Drive Elementary Schools are both expected to reach their peak enrollments in 2026. The total K - 5 enrollment is expected to reach a peak of 1,125 in 2026; this is 20 more students than are currently enrolled.

Table 8 - Projected Sayville UFSD Elementary Enrollment

Year		Cherry Avenue	Lincoln Avenue	Sunrise Drive	Total K - 5
Actual	2022	353	378	374	1,105
Projected	2023	338	372	367	1,077
	2024	343	372	375	1,090
	2025	356	375*	380	1,111
	2026	369*	371	385*	1,125*
	2027	367	365	382	1,114
	2028	364	361	376	1,101
	2029	363	360	375	1,098
	2030	360	359	374	1,093
	2031	352	349	365	1,066
	2032	348	346	361	1,055

*denotes peak enrollment during 2023 - 2032

Note: Does not include PK enrollment at Lincoln Avenue ES

Cherry Avenue Elementary School [Appendix A-9, A-10]

Cherry Avenue Elementary School enrolled 443 students in grades K - 5 in 2012; this was the historical peak enrollment. Subsequently, losses in seven of the last ten years led to the current enrollment of 353 students in 2022. A loss of 90 students, or 20.3 percent, is noted during the historical period.

Enrollment is expected to remain relatively stable during the next ten years. The forecasted 2032 enrollment of 348 students represents a loss of 5 students, or 1.4 percent, when compared to the current enrollment. It is anticipated that the kindergarten will enroll 54 - 64 students and will average approximately 34 percent of the district's kindergarten population [Appendix A-5].

Cherry Avenue Elementary School displays the average trend to gain students in transition to grades 1 - 3, maintain students in movement to fourth grade and lose students in transition to fifth grade. The entering kindergarten class is expected to be smaller than the exiting fifth grade class of the previous year in seven of the next ten years, minimizing any gains occurring through transition. These factors will result in the projected enrollment pattern.

This school currently houses eighteen (18) sections for the instruction of 2 - 4 sections per grade level. The average section size for this school is 19.9 students, ranging from an average of 18.3 students in third grade to 23.5 students in second grade. Enrollment projections suggest the need for 17 - 18 instructional sections during the next ten years, in order to maintain class sizes at a maximum of 25 students per section.

Lincoln Avenue Elementary School [Appendix A-11, A-12]

Lincoln Avenue Elementary School enrolled 509 students in grades K - 5 in 2012. This was the historical peak enrollment. Subsequently, losses in seven of the last ten years led to the current enrollment of 378 students in 2022. A loss of 131 students, or 25.7 percent, is noted during the historical period.

Small losses are expected in eight of the next ten years. The forecasted 2032 enrollment of 346 students represents a loss of 32 students, or 8.5 percent, when compared to the current enrollment. It is anticipated that the kindergarten will enroll 53 - 62 students and will average approximately 33 percent of the district's kindergarten population [Appendix A-5].

Lincoln Avenue Elementary School displays the average trend to gain students in transition to grades 1 and 3, maintain students in movement to fourth grade and lose students in transition to grades 2 and 5. The entering kindergarten class is expected to be smaller than the exiting fifth grade class of the previous year in eight of the next ten years. These factors will result in the projected enrollment pattern.

This school also houses a full-day pre-kindergarten program, which was implemented this year, with 74 students enrolled. The program currently has a cap of 72 students, to be housed in 4 sections.

Lincoln Avenue Elementary School currently houses twenty-five (25) sections for the instruction of 3 - 4 sections per grade level, 3 sections of self-contained special education and 4 sections of pre-kindergarten. The average section size for this school (K - 5) is 19.5 students, ranging from an average of 17.7 students in fourth grade to 20.7 students in third grade. Enrollment projections suggest the need for 25 instructional sections during the next ten years, including 3 sections of self-contained special education and 4 sections of pre-kindergarten, in order to maintain class sizes at a maximum of 25 students per section.

Sunrise Drive Elementary School [Appendix A-13, A-14]

Sunrise Drive Elementary School enrolled 426 students in grades K - 5 in 2012. Subsequently, losses in six of the last ten years led to the current enrollment of 374 students. A loss of 52 students, or 12.2 percent, is noted during the historical period.

Enrollment is expected to remain stable during the next ten years. The forecasted 2032 enrollment of 361 students represents a loss of 13 students, or 3.5 percent, when compared to the current enrollment. It is anticipated that the kindergarten will enroll 54 - 63 students and will average approximately 33 percent of the district's kindergarten population [Appendix A-5].

Sunrise Drive Elementary School displays the average trend to gain students in transition to grades 1, 2 and 4, and maintain students in progression to grades 3 and 5. However, the entering kindergarten class is expected to be smaller than the exiting fifth grade class of the previous year in nine of the next ten years, minimizing any gains in transition. These factors will result in the projected enrollment pattern.

This school currently houses nineteen (19) sections for the instruction of three sections per grade level, and one section of self-contained special education. The average section size for this school is 20.3 students, ranging from an average of 18.0 students in fourth grade to 23.3 students in fifth grade. Enrollment projections suggest the need for 19 instructional sections during the next ten years, including one section of self-contained special education, in order to maintain class sizes at a maximum of 25 students per section.

ELEMENTARY INSTRUCTIONAL SECTIONS

The current and projected need for elementary instructional sections is presented in Table 9. These needs are based on a maximum of 25 students per section.

It is shown that the district currently houses sixty-two (62) sections for the instruction of grades K - 5, including 4 sections of self-contained special education and 4 sections of pre-kindergarten. The projected PK - 5 enrollment suggests the need for 61 - 62 sections, including 4 sections of self-contained special education and 4 sections of pre-kindergarten. When compared to the current allocation of sections, it is anticipated that the district will require one fewer section (61) over the next three years, and the current allocation of 62 sections in the remaining years (2026 - 2032) of the projection period [Appendix A-15].

Table 9 - Projected Sayville UFSD Elementary Instructional Sections

Year		Cherry Avenue	Lincoln Avenue	Sunrise Drive	Total PK - 5
Actual	2022	18	25	19	62
Projected	2023	17	25	19	61
	2024	17	25	19	61
	2025	17	25	19	61
	2026	18	25	19	62
	2027	18	25	19	62
	2028	18	25	19	62
	2029	18	25	19	62
	2030	18	25	19	62
	2031	18	25	19	62
	2032	18	25	19	62

Note: Includes self-contained special education sections and PK sections at Lincoln ES

MIDDLE GRADES ENROLLMENT (6 - 8) *[Appendix A-3, A-7]*

Sayville Middle School *[Appendix A-16]*

Sayville Middle School enrolled 761 students in grades 6 - 8 in 2012; this was the peak enrollment of the historical period. Subsequently, losses in nine of the last ten years led to the current enrollment of 619 students in 2022. A loss of 142 students, or 18.6 percent, is noted during the historical period.

Smaller losses are expected during the next ten years. The forecasted 2032 enrollment of 575 students represents a loss of 44 students, or 7.1 percent, when compared to the current enrollment.

This school displays the average trend to lose students in progression to seventh grade and maintain students in progression to eighth grade. The entering sixth grade class is expected to be smaller than the exiting eighth grade class of the previous year in five of the next ten years. These factors will result in the projected enrollment pattern.

SECONDARY GRADES ENROLLMENT (9 - 12) *[Appendix A-3, A-7]*

Sayville High School *[Appendix A-17]*

Sayville High School enrolled 1,047 students in grades 9 - 12 in 2012; this was the historical peak enrollment. Subsequently, losses in nine of the last ten years led to the current enrollment of 881 students. A loss of 166 students, or 15.9 percent, is noted during the historical period.

Additional decreases are expected during the next ten years. The forecasted 2032 enrollment of 732 students represents a loss of 149 students, or 16.9 percent, when compared to the current enrollment.

This school displays the average trend to lose students in transition to tenth grade and maintain students in transition to eleventh and twelfth grade. The entering ninth grade class is expected to be smaller than the exiting twelfth grade class of the previous year in eight of the next ten years. These factors will result in the projected enrollment pattern.

Table 10 displays the current and projected middle and high school enrollments for the Sayville Union Free School District. It is shown that Sayville Middle School and Sayville High School are expected to be at their projection period peak enrollments next year, in 2023. The combined middle and high school enrollment is also expected to be at its peak in 2023, with 1,470 students; this is 30 fewer students than are currently enrolled.

Table 10 - Projected Sayville UFSD Middle & High School Enrollment

Year		Sayville MS (6 - 8)	Sayville HS (9 - 12)	Total Enrollment (6 - 12)
Projected	2022	619	881	1,500
	2023	609*	861*	1,470*
	2024	583	823	1,406
	2025	566	806	1,372
	2026	528	814	1,342
	2027	551	765	1,316
	2028	561	753	1,314
	2029	571	725	1,296
	2030	562	709	1,271
	2031	573	732	1,305
	2032	575	732	1,307

*denotes peak enrollment during 2023 - 2032

Appendix A

=====

SAYVILLE UNION FREE SCHOOL DISTRICT
 ACCURACY OF WESTERN SUFFOLK BOCES 2021-22 PROJECTIONS FOR 2022-23

=====

GRADE	Actual 2022-23	Projected	Difference	
KINDERGARTEN	179	184	5	
FIRST	178	178	0	
SECOND	164	163	-1	
THIRD	180	179	-1	
FOURTH	163	161	-2	
FIFTH	206	208	2	
SIXTH	203	202	-1	
SEVENTH	196	188	-8	
EIGHTH	220	220	0	
NINTH	199	197	-2	
TENTH	214	216	2	
ELEVENTH	230	232	2	
TWELFTH	238	241	3	
SC SPED (K - 5)	35	29	-6	Projected/Actual
K - 12 (inc. Sp. Ed)	2,605	2,598	-7	99.7%
K - 5 (inc. Sp.Ed)	1,105	1,102	-3	99.7%
6 - 8	619	610	-9	98.5%
9 - 12	881	886	5	100.6%
Cherry Avenue ES	353	355	2	100.6%
Lincoln Avenue ES	378	382	4	101.1%
Sunrise Drive ES	374	365	-9	97.6%

=====

SAYVILLE UNION FREE SCHOOL DISTRICT
HISTORICAL ENROLLMENT

GRADE	2012	2013	2014	2015	2016	2017	2018	2019	2020	2021	2022
PRE-KINDERGARTEN											74
KINDERGARTEN	202	195	207	169	184	200	151	180	158	174	179
FIRST	226	207	191	213	174	194	209	153	181	162	178
SECOND	230	224	219	197	214	183	195	206	156	176	164
THIRD	216	225	227	222	196	223	184	201	204	160	180
FOURTH	256	217	224	228	209	197	226	189	196	207	163
FIFTH	231	252	221	231	230	217	202	219	186	196	206
SIXTH	244	232	253	228	233	244	227	218	223	191	203
SEVENTH	267	249	230	263	228	237	241	222	209	221	196
EIGHTH	250	264	247	234	262	231	240	241	221	200	220
NINTH	231	247	246	247	219	266	226	242	234	216	199
TENTH	280	225	245	253	243	227	269	231	236	230	214
ELEVENTH	245	284	225	244	251	247	233	268	232	239	230
TWELFTH	291	249	280	229	247	247	252	231	269	235	238
SC SPED (K - 5)	17	21	21	25	29	30	28	28	21	31	35
TOTAL K - 12	3,186	3,091	3,036	2,983	2,919	2,943	2,883	2,829	2,726	2,638	2,605
CHANGE		-95	-55	-53	-64	24	-60	-54	-103	-88	-33
% CHANGE		-3.0%	-1.8%	-1.7%	-2.1%	0.8%	-2.0%	-1.9%	-3.6%	-3.2%	-1.3%
TOTAL PK - 12											2,679
SC SPED ratio to K-5 REG	1.2%	1.6%	1.6%	2.0%	2.4%	2.5%	2.4%	2.4%	1.9%	2.9%	3.3%
DISTRICT MIGRATION	12 - 13	13 - 14	14 - 15	15 - 16	16 - 17	17 - 18	18 - 19	19 - 20	20 - 21	21 - 22	AVERAGE
K - 1	102.5%	97.9%	102.9%	103.0%	105.4%	104.5%	101.3%	100.6%	102.5%	102.3%	102.2%
1 - 2	99.1%	105.8%	103.1%	100.5%	105.2%	100.5%	98.6%	102.0%	97.2%	101.2%	100.6%
2 - 3	97.8%	101.3%	101.4%	99.5%	104.2%	100.5%	103.1%	99.0%	102.6%	102.3%	101.7%
3 - 4	100.5%	99.6%	100.4%	94.1%	100.5%	101.3%	102.7%	97.5%	101.5%	101.9%	101.0%
4 - 5	98.4%	101.8%	103.1%	100.9%	103.8%	102.5%	96.9%	98.4%	100.0%	99.5%	99.3%
5 - 6	100.4%	100.4%	103.2%	100.9%	106.1%	104.6%	107.9%	101.8%	102.7%	103.6%	103.2%
6 - 7	102.0%	99.1%	104.0%	100.0%	101.7%	98.8%	97.8%	95.9%	99.1%	102.6%	99.2%
7 - 8	98.9%	99.2%	101.7%	99.6%	101.3%	101.3%	100.0%	99.5%	95.7%	99.5%	99.7%
8 - 9	98.8%	93.2%	100.0%	93.6%	101.5%	97.8%	100.8%	97.1%	97.7%	99.5%	98.8%
9 - 10	97.4%	99.2%	102.8%	98.4%	103.7%	101.1%	102.2%	97.5%	98.3%	99.1%	99.3%
10 - 11	101.4%	100.0%	99.6%	99.2%	101.6%	102.6%	99.6%	100.4%	101.3%	100.0%	100.3%
11 - 12	101.6%	98.6%	101.8%	101.2%	98.4%	102.0%	99.1%	100.4%	101.3%	99.6%	100.4%

Note: The separate count of SC SPED in K - 5 has contributed to the consistently high migration ratios from G5 to G6.

SAYVILLE UNION FREE SCHOOL DISTRICT
HISTORICAL ENROLLMENT BY GRADE CONFIGURATION

GRADE	2012	2013	2014	2015	2016	2017	2018	2019	2020	2021	2022
PRE-KINDERGARTEN											74
KINDERGARTEN	202	195	207	169	184	200	151	180	158	174	179
FIRST	226	207	191	213	174	194	209	153	181	162	178
SECOND	230	224	219	197	214	183	195	206	156	176	164
THIRD	216	225	227	222	196	223	184	201	204	160	180
FOURTH	256	217	224	228	209	197	226	189	196	207	163
FIFTH	231	252	221	231	230	217	202	219	186	196	206
SC SPED	17	21	21	25	29	30	28	28	21	31	35
TOTAL K - 5	1,378	1,341	1,310	1,285	1,236	1,244	1,195	1,176	1,102	1,106	1,105
CHANGE		-37	-31	-25	-49	8	-49	-19	-74	4	-1
% CHANGE		-2.7%	-2.3%	-1.9%	-3.8%	0.6%	-3.9%	-1.6%	-6.3%	0.4%	-0.1%
TOTAL PK - 5											1,179
SIXTH	244	232	253	228	233	244	227	218	223	191	203
SEVENTH	267	249	230	263	228	237	241	222	209	221	196
EIGHTH	250	264	247	234	262	231	240	241	221	200	220
TOTAL 6 - 8	761	745	730	725	723	712	708	681	653	612	619
CHANGE		-16	-15	-5	-2	-11	-4	-27	-28	-41	7
% CHANGE		-2.1%	-2.0%	-0.7%	-0.3%	-1.5%	-0.6%	-3.8%	-4.1%	-6.3%	1.1%
NINTH	231	247	246	247	219	266	226	242	234	216	199
TENTH	280	225	245	253	243	227	269	231	236	230	214
ELEVENTH	245	284	225	244	251	247	233	268	232	239	230
TWELFTH	291	249	280	229	247	247	252	231	269	235	238
TOTAL 9 -12	1,047	1,005	996	973	960	987	980	972	971	920	881
CHANGE		-42	-9	-23	-13	27	-7	-8	-1	-51	-39
% CHANGE		-4.0%	-0.9%	-2.3%	-1.3%	2.8%	-0.7%	-0.8%	-0.1%	-5.3%	-4.2%
TOTAL K - 12	3,186	3,091	3,036	2,983	2,919	2,943	2,883	2,829	2,726	2,638	2,605
CHANGE		-95	-55	-53	-64	24	-60	-54	-103	-88	-33
% CHANGE		-3.0%	-1.8%	-1.7%	-2.1%	0.8%	-2.0%	-1.9%	-3.6%	-3.2%	-1.3%
TOTAL PK - 12											2,679

SAYVILLE UNION FREE SCHOOL DISTRICT
KINDERGARTEN PROJECTIONS

Births							Ratios
Birth Year	Suffolk County	SD	Enrollment Year	Total K	Non-SC SPED K	SC SPED K	K/Conty Births
2007	18,510	164	2012	203	202	1	0.0110
2008	17,984	181	2013	203	195	8	0.0113
2009	17,183	180	2014	210	207	3	0.0122
2010	16,805	151	2015	175	169	6	0.0104
2011	16,027	164	2016	186	184	2	0.0116
2012	15,727	149	2017	204	200	4	0.0130
2013	15,530	126	2018	157	151	6	0.0101
2014	15,568	142	2019	182	180	2	0.0117
2015	15,808	152	2020	161	158	3	0.0102
2016	15,539	153	2021	183	174	9	0.0118
2017	15,334	163	2022	185	179	6	0.0121
2018	15,241	145	2023	174	169	5	
2019	15,001	146	2024	174	169	5	
prelim. 2020	14,742	167	2025	195	189	6	
est. 2021	14,974		2026	177	172	5	
est. 2022	14,635		2027	173	168	5	
est. 2023	14,516		2028	172	167	5	
est. 2024	14,442		2029	171	166	5	
est. 2025	14,268		2030	169	164	5	
est. 2026	14,147		2031	168	163	5	0.0114
est. 2027	14,027		2032	166	161	5	historical average

Note: 2007-2019: finalized births reported by DOH@NYS; 2020: county births reported by the CDC, SD births - preliminary count received from DOH@NYS

=====

SAYVILLE UNION FREE SCHOOL DISTRICT
 KINDERGARTEN (excluding SC SPED K) DISTRIBUTION INTO THE SCHOOLS

=====

Enrollment Year	Cherry ES		Lincoln ES		Sunrise ES	
2012	62	30.7%	79	39.1%	61	30.2%
2013	63	32.3%	72	36.9%	60	30.8%
2014	77	37.2%	69	33.3%	61	29.5%
2015	63	37.3%	62	36.7%	44	26.0%
2016	60	32.6%	57	31.0%	67	36.4%
2017	76	38.0%	66	33.0%	58	29.0%
2018	51	33.8%	50	33.1%	50	33.1%
2019	61	33.9%	60	33.3%	59	32.8%
2020	41	25.9%	60	38.0%	57	36.1%
2021	60	34.5%	58	33.3%	56	32.2%
2022	60	33.5%	58	32.4%	61	34.1%
2023	57		55		57	
2024	57		55		57	
2025	64		62		63	
2026	58		56		58	
2027	57		55		56	
2028	56		55		56	
2029	56		54		56	
2030	55		54		55	
2031	55		53		55	
2032	54		53		54	
Average		33.8%		32.7%		33.4%

=====

=====

SAYVILLE UNION FREE SCHOOL DISTRICT
PROJECTED ENROLLMENT

=====

GRADE	2022	2023	2024	2025	2026	2027	2028	2029	2030	2031	2032
=====	Actual	=====	=====	=====	=====	=====	=====	=====	=====	=====	=====
PRE-KINDERGARTEN	74	72	72	72	72	72	72	72	72	72	72
KINDERGARTEN	179	169	169	189	172	168	167	166	164	163	161
FIRST	178	183	173	173	193	176	172	171	170	168	167
SECOND	164	179	184	174	174	194	177	173	172	171	169
THIRD	180	167	182	187	177	177	197	180	176	175	174
FOURTH	163	182	169	184	189	179	179	199	182	178	177
FIFTH	206	162	181	168	183	188	178	178	198	181	177
SIXTH	203	213	172	185	174	195	196	185	185	206	188
SEVENTH	196	201	211	171	184	173	193	194	184	184	204
EIGHTH	220	195	200	210	170	183	172	192	193	183	183
NINTH	199	217	193	198	207	168	181	170	190	191	181
TENTH	214	198	215	192	197	205	167	180	169	189	190
ELEVENTH	230	215	199	216	193	198	206	168	181	170	190
TWELFTH	238	231	216	200	217	194	199	207	169	182	171
SC SPED (K - 5)	35	35	32	36	37	32	31	31	31	30	30
TOTAL K - 12	2,605	2,547	2,496	2,483	2,467	2,430	2,415	2,394	2,364	2,371	2,362
CHANGE		-58	-51	-13	-16	-37	-15	-21	-30	7	-9
% CHANGE		-2.2%	-2.0%	-0.5%	-0.6%	-1.5%	-0.6%	-0.9%	-1.3%	0.3%	-0.4%
TOTAL PK - 12	2,679	2,619	2,568	2,555	2,539	2,502	2,487	2,466	2,436	2,443	2,434

=====

Note: The full-day UPK program begins in 2022, with a cap of total 72 students (4 sections, 18 maximum per section) projected each year.

=====

SAYVILLE UNION FREE SCHOOL DISTRICT
PROJECTED ENROLLMENT BY GRADE CONFIGURATION

GRADE	2022	2023	2024	2025	2026	2027	2028	2029	2030	2031	2032
	Actual										
PRE-KINDERGARTEN	74	72	72	72	72	72	72	72	72	72	72
KINDERGARTEN	179	169	169	189	172	168	167	166	164	163	161
FIRST	178	183	173	173	193	176	172	171	170	168	167
SECOND	164	179	184	174	174	194	177	173	172	171	169
THIRD	180	167	182	187	177	177	197	180	176	175	174
FOURTH	163	182	169	184	189	179	179	199	182	178	177
FIFTH	206	162	181	168	183	188	178	178	198	181	177
SC SPED	35	35	32	36	37	32	31	31	31	30	30
TOTAL K - 5	1,105	1,077	1,090	1,111	1,125	1,114	1,101	1,098	1,093	1,066	1,055
CHANGE		-28	13	21	14	-11	-13	-3	-5	-27	-11
% CHANGE		-2.5%	1.2%	1.9%	1.3%	-1.0%	-1.2%	-0.3%	-0.5%	-2.5%	-1.0%
TOTAL PK - 5	1,179	1,149	1,162	1,183	1,197	1,186	1,173	1,170	1,165	1,138	1,127
SIXTH	203	213	172	185	174	195	196	185	185	206	188
SEVENTH	196	201	211	171	184	173	193	194	184	184	204
EIGHTH	220	195	200	210	170	183	172	192	193	183	183
TOTAL 6 - 8	619	609	583	566	528	551	561	571	562	573	575
CHANGE		-10	-26	-17	-38	23	10	10	-9	11	2
% CHANGE		-1.6%	-4.3%	-2.9%	-6.7%	4.4%	1.8%	1.8%	-1.6%	2.0%	0.3%
NINTH	199	217	193	198	207	168	181	170	190	191	181
TENTH	214	198	215	192	197	205	167	180	169	189	190
ELEVENTH	230	215	199	216	193	198	206	168	181	170	190
TWELFTH	238	231	216	200	217	194	199	207	169	182	171
TOTAL 9 -12	881	861	823	806	814	765	753	725	709	732	732
CHANGE		-20	-38	-17	8	-49	-12	-28	-16	23	0
% CHANGE		-2.3%	-4.4%	-2.1%	1.0%	-6.0%	-1.6%	-3.7%	-2.2%	3.2%	0.0%
TOTAL K - 12	2,605	2,547	2,496	2,483	2,467	2,430	2,415	2,394	2,364	2,371	2,362
CHANGE		-58	-51	-13	-16	-37	-15	-21	-30	7	-9
% CHANGE		-2.2%	-2.0%	-0.5%	-0.6%	-1.5%	-0.6%	-0.9%	-1.3%	0.3%	-0.4%
TOTAL PK - 12	2,679	2,619	2,568	2,555	2,539	2,502	2,487	2,466	2,436	2,443	2,434

SAYVILLE UNION FREE SCHOOL DISTRICT
 AVERAGE GRADE LEVEL SIZE (K - 5 : excluding SC SPED students)

GRADE	1	2	3	4	change		
	12 - 17	17 - 22	22 - 27	27 - 32	2/1	3/2	4/3
KINDERGARTEN	193	174	174	165	-9.8%	0.0%	-5.2%
FIRST	201	180	179	171	-10.4%	-0.6%	-4.5%
SECOND	211	180	178	176	-14.7%	-1.1%	-1.1%
THIRD	218	192	178	180	-11.9%	-7.3%	1.1%
FOURTH	222	196	178	182	-11.7%	-9.2%	2.2%
FIFTH	230	204	181	183	-11.3%	-11.3%	1.1%
SIXTH	239	218	190	193	-8.8%	-12.8%	1.6%
SEVENTH	246	221	189	189	-10.2%	-14.5%	0.0%
EIGHTH	248	226	196	184	-8.9%	-13.3%	-6.1%
NINTH	243	231	197	180	-4.9%	-14.7%	-8.6%
TENTH	246	235	204	183	-4.5%	-13.2%	-10.3%
ELEVENTH	249	242	209	186	-2.8%	-13.6%	-11.0%
TWELFTH	257	245	216	187	-4.7%	-11.8%	-13.4%

DISPLACEMENT BETWEEN ENTERING & EXITING GRADES

Year	Grade 12	Year	Grade K (including SC SPED K)	Difference
2012	291	2013	203	-88
2013	249	2014	210	-39
2014	280	2015	175	-105
2015	229	2016	186	-43
2016	247	2017	204	-43
2017	247	2018	157	-90
2018	252	2019	182	-70
2019	231	2020	161	-70
2020	269	2021	183	-86
2021	235	2022	185	-50
2022	238	2023	174	-64
2023	231	2024	174	-57
2024	216	2025	195	-21
2025	200	2026	177	-23
2026	217	2027	173	-44
2027	194	2028	172	-22
2028	199	2029	171	-28
2029	207	2030	169	-38
2030	169	2031	168	-1
2031	182	2032	166	-16
Average Difference 2012 - 2017				-64
Average Difference 2017 - 2022				-73
Average Difference 2022 - 2027				-42
Average Difference 2027 - 2032				-21

CHERRY AVENUE ELEMENTARY SCHOOL
HISTORICAL ENROLLMENT

GRADE	2012	2013	2014	2015	2016	2017	2018	2019	2020	2021	2022
KINDERGARTEN	62	63	77	63	60	76	51	61	41	60	60
FIRST	67	65	62	83	66	64	77	51	59	45	60
SECOND	77	66	67	65	84	67	69	78	52	54	47
THIRD	77	79	72	70	67	84	69	72	78	55	55
FOURTH	72	76	81	73	65	65	86	70	70	77	56
FIFTH	88	71	78	79	73	66	65	86	69	70	75
TOTAL	443	420	437	433	415	422	417	418	369	361	353
% CHANGE		-5.2%	4.0%	-0.9%	-4.2%	1.7%	-1.2%	0.2%	-11.7%	-2.2%	-2.2%
Cherry Avenue ES Migration	12 - 13	13 - 14	14 - 15	15 - 16	16 - 17	17 - 18	18 - 19	19 - 20	20 - 21	21 - 22	AVERAGE
K - 1	104.8%	98.4%	107.8%	104.8%	106.7%	101.3%	100.0%	96.7%	109.8%	100.0%	101.6%
1 - 2	98.5%	103.1%	104.8%	101.2%	101.5%	107.8%	101.3%	102.0%	91.5%	104.4%	101.4%
2 - 3	102.6%	109.1%	104.5%	103.1%	100.0%	103.0%	104.3%	100.0%	105.8%	101.9%	103.0%
3 - 4	98.7%	102.5%	101.4%	92.9%	97.0%	102.4%	101.4%	97.2%	98.7%	101.8%	100.3%
4 - 5	98.6%	102.6%	97.5%	100.0%	101.5%	100.0%	100.0%	98.6%	100.0%	97.4%	99.2%

CHERRY AVENUE ELEMENTARY SCHOOL
PROJECTED ENROLLMENT

GRADE	2022	2023	2024	2025	2026	2027	2028	2029	2030	2031	2032
	Actual										
KINDERGARTEN	60	57	57	64	58	57	56	56	55	55	54
FIRST	60	61	58	58	65	59	58	57	57	56	56
SECOND	47	61	62	59	59	66	60	59	58	58	57
THIRD	55	48	63	64	61	61	68	62	61	60	60
FOURTH	56	55	48	63	64	61	61	68	62	61	60
FIFTH	75	56	55	48	62	63	61	61	67	62	61
TOTAL	353	338	343	356	369	367	364	363	360	352	348
% CHANGE		-4.2%	1.5%	3.8%	3.7%	-0.5%	-0.8%	-0.3%	-0.8%	-2.2%	-1.1%

CHERRY AVENUE ELEMENTARY SCHOOL
 PROJECTED ENROLLMENT - SECTIONAL ANALYSIS

based on the maximum class size of 25 for K - 5

GRADE	2022	2023	2024	2025	2026	2027	2028	2029	2030	2031	2032
	Actual										
KINDERGARTEN (25)	60	57	57	64	58	57	56	56	55	55	54
Sections	3	3	3	3	3	3	3	3	3	3	3
Avg Section Size	20.0	19.0	19.0	21.3	19.3	19.0	18.7	18.7	18.3	18.3	18.0
FIRST (25)	60	61	58	58	65	59	58	57	57	56	56
Sections	3	3	3	3	3	3	3	3	3	3	3
Avg Section Size	20.0	20.3	19.3	19.3	21.7	19.7	19.3	19.0	19.0	18.7	18.7
SECOND (25)	47	61	62	59	59	66	60	59	58	58	57
Sections	2	3	3	3	3	3	3	3	3	3	3
Avg Section Size	23.5	20.3	20.7	19.7	19.7	22.0	20.0	19.7	19.3	19.3	19.0
THIRD (25)	55	48	63	64	61	61	68	62	61	60	60
Sections	3	2	3	3	3	3	3	3	3	3	3
Avg Section Size	18.3	24.0	21.0	21.3	20.3	20.3	22.7	20.7	20.3	20.0	20.0
FOURTH (25)	56	55	48	63	64	61	61	68	62	61	60
Sections	3	3	2	3	3	3	3	3	3	3	3
Avg Section Size	18.7	18.3	24.0	21.0	21.3	20.3	20.3	22.7	20.7	20.3	20.0
FIFTH (25)	75	56	55	48	62	63	61	61	67	62	61
Sections	4	3	3	2	3	3	3	3	3	3	3
Avg Section Size	18.8	18.7	18.3	24.0	20.7	21.0	20.3	20.3	22.3	20.7	20.3
Total Enrollment	353	338	343	356	369	367	364	363	360	352	348
Total Sections	18	17	17	17	18	18	18	18	18	18	18
Avg Section Size	19.9	20.1	20.4	21.1	20.5	20.4	20.2	20.2	20.0	19.6	19.3

Note: The boxed cells indicate the average section size is approaching the maximum class size for the grade level.

LINCOLN AVENUE ELEMENTARY SCHOOL
HISTORICAL ENROLLMENT

GRADE	2012	2013	2014	2015	2016	2017	2018	2019	2020	2021	2022
PRE-KINDERGARTEN											74
KINDERGARTEN	79	72	69	62	57	66	50	60	60	58	58
FIRST	80	75	68	68	60	61	70	51	62	60	59
SECOND	86	74	79	68	66	66	59	62	51	61	58
THIRD	76	80	71	80	69	72	67	62	60	54	62
FOURTH	106	75	77	72	74	72	74	71	57	62	53
FIFTH	77	106	73	82	74	78	77	69	67	59	61
SC SPED	5	9	8	7	4	10	12	19	14	22	27
TOTAL K - 5	509	491	445	439	404	425	409	394	371	376	378
% CHANGE		-3.5%	-9.4%	-1.3%	-8.0%	5.2%	-3.8%	-3.7%	-5.8%	1.3%	0.5%

TOTAL PK - 5 452

Lincoln ES Migration	12 - 13	13 - 14	14 - 15	15 - 16	16 - 17	17 - 18	18 - 19	19 - 20	20 - 21	21 - 22	AVERAGE
K - 1	94.9%	94.4%	98.6%	96.8%	107.0%	106.1%	102.0%	103.3%	100.0%	101.7%	101.8%
1 - 2	92.5%	105.3%	100.0%	97.1%	110.0%	96.7%	88.6%	100.0%	98.4%	96.7%	96.1%
2 - 3	93.0%	95.9%	101.3%	101.5%	109.1%	101.5%	105.1%	96.8%	105.9%	101.6%	101.4%
3 - 4	98.7%	96.3%	101.4%	92.5%	104.3%	102.8%	106.0%	91.9%	103.3%	98.1%	100.4%
4 - 5	100.0%	97.3%	106.5%	102.8%	105.4%	106.9%	93.2%	94.4%	103.5%	98.4%	99.3%

LINCOLN AVENUE ELEMENTARY SCHOOL
PROJECTED ENROLLMENT

GRADE	2022	2023	2024	2025	2026	2027	2028	2029	2030	2031	2032
	Actual										
PRE-KINDERGARTEN	74	72	72	72	72	72	72	72	72	72	72
KINDERGARTEN	58	55	55	62	56	55	55	54	54	53	53
FIRST	59	59	56	56	63	57	56	56	55	55	54
SECOND	58	57	57	54	54	61	55	54	54	53	53
THIRD	62	60	58	58	55	55	62	56	55	55	54
FOURTH	53	62	60	58	58	55	55	62	56	55	55
FIFTH	61	53	62	60	58	58	55	55	62	56	55
SC SPED	27	26	24	27	27	24	23	23	23	22	22
TOTAL K - 5	378	372	372	375	371	365	361	360	359	349	346
% CHANGE		-1.6%	0.0%	0.8%	-1.1%	-1.6%	-1.1%	-0.3%	-0.3%	-2.8%	-0.9%

TOTAL PK - 5 452 444 444 447 443 437 433 432 431 421 418

Note: The full-day UPK program begins in 2022, with a cap of total 72 students (4 sections, 18 maximum per section) projected each year.

LINCOLN AVENUE ELEMENTARY SCHOOL
PROJECTED ENROLLMENT - SECTIONAL ANALYSIS

based on the maximum class size of 25 for K - 5

GRADE	2022	2023	2024	2025	2026	2027	2028	2029	2030	2031	2032
	Actual										
PRE-KINDERGARTEN (18)	74	72	72	72	72	72	72	72	72	72	72
Sections	4	4	4	4	4	4	4	4	4	4	4
Avg Section Size	18.5	18.0	18.0	18.0	18.0	18.0	18.0	18.0	18.0	18.0	18.0
KINDERGARTEN (25)	58	55	55	62	56	55	55	54	54	53	53
Sections	3	3	3	3	3	3	3	3	3	3	3
Avg Section Size	19.3	18.3	18.3	20.7	18.7	18.3	18.3	18.0	18.0	17.7	17.7
FIRST (25)	59	59	56	56	63	57	56	56	55	55	54
Sections	3	3	3	3	3	3	3	3	3	3	3
Avg Section Size	19.7	19.7	18.7	18.7	21.0	19.0	18.7	18.7	18.3	18.3	18.0
SECOND (25)	58	57	57	54	54	61	55	54	54	53	53
Sections	3	3	3	3	3	3	3	3	3	3	3
Avg Section Size	19.3	19.0	19.0	18.0	18.0	20.3	18.3	18.0	18.0	17.7	17.7
THIRD (25)	62	60	58	58	55	55	62	56	55	55	54
Sections	3	3	3	3	3	3	3	3	3	3	3
Avg Section Size	20.7	20.0	19.3	19.3	18.3	18.3	20.7	18.7	18.3	18.3	18.0
FOURTH (25)	53	62	60	58	58	55	55	62	56	55	55
Sections	3	3	3	3	3	3	3	3	3	3	3
Avg Section Size	17.7	20.7	20.0	19.3	19.3	18.3	18.3	20.7	18.7	18.3	18.3
FIFTH (25)	61	53	62	60	58	58	55	55	62	56	55
Sections	3	3	3	3	3	3	3	3	3	3	3
Avg Section Size	20.3	17.7	20.7	20.0	19.3	19.3	18.3	18.3	20.7	18.7	18.3
SC SPED	27	26	24	27	27	24	23	23	23	22	22
Sections	3	3	3	3	3	3	3	3	3	3	3
Total Enrollment (K - 5)	378	372	372	375	371	365	361	360	359	349	346
Total Sections (K - 5)	21	21	21	21	21	21	21	21	21	21	21
Avg Section Size (reg ed)	19.5	19.2	19.3	19.3	19.1	18.9	18.8	18.7	18.7	18.2	18.0
Total Enrollment (PK - 5)	452	444	444	447	443	437	433	432	431	421	418
Total Sections (PK - 5)	25	25	25	25	25	25	25	25	25	25	25

Note: PK is full-day, capped at 4 sections with a maximum of 18 students per section.

Note: The boxed cells indicate the average section size is approaching the maximum class size for the grade level.

SUNRISE DRIVE ELEMENTARY SCHOOL
HISTORICAL ENROLLMENT

GRADE	2012	2013	2014	2015	2016	2017	2018	2019	2020	2021	2022
KINDERGARTEN	61	60	61	44	67	58	50	59	57	56	61
FIRST	79	67	61	62	48	69	62	51	60	57	59
SECOND	67	84	73	64	64	50	67	66	53	61	59
THIRD	63	66	84	72	60	67	48	67	66	51	63
FOURTH	78	66	66	83	70	60	66	48	69	68	54
FIFTH	66	75	70	70	83	73	60	64	50	67	70
SC SPED	12	12	13	18	25	20	16	9	7	9	8
TOTAL	426	430	428	413	417	397	369	364	362	369	374
% CHANGE		0.9%	-0.5%	-3.5%	1.0%	-4.8%	-7.1%	-1.4%	-0.5%	1.9%	1.4%
Sunrise ES Migration	12 - 13	13 - 14	14 - 15	15 - 16	16 - 17	17 - 18	18 - 19	19 - 20	20 - 21	21 - 22	AVERAGE
K - 1	109.8%	101.7%	101.6%	109.1%	103.0%	106.9%	102.0%	101.7%	100.0%	105.4%	103.2%
1 - 2	106.3%	109.0%	104.9%	103.2%	104.2%	97.1%	106.5%	103.9%	101.7%	103.5%	103.0%
2 - 3	98.5%	100.0%	98.6%	93.8%	104.7%	96.0%	100.0%	100.0%	96.2%	103.3%	99.8%
3 - 4	104.8%	100.0%	98.8%	97.2%	100.0%	98.5%	100.0%	103.0%	103.0%	105.9%	103.0%
4 - 5	96.2%	106.1%	106.1%	100.0%	104.3%	100.0%	97.0%	104.2%	97.1%	102.9%	100.3%

SUNRISE DRIVE ELEMENTARY SCHOOL
PROJECTED ENROLLMENT

GRADE	2022	2023	2024	2025	2026	2027	2028	2029	2030	2031	2032
	Actual										
KINDERGARTEN	61	57	57	63	58	56	56	56	55	55	54
FIRST	59	63	59	59	65	60	58	58	58	57	57
SECOND	59	61	65	61	61	67	62	60	60	60	59
THIRD	63	59	61	65	61	61	67	62	60	60	60
FOURTH	54	65	61	63	67	63	63	69	64	62	62
FIFTH	70	53	64	60	63	67	62	62	69	63	61
SC SP ED	8	9	8	9	10	8	8	8	8	8	8
TOTAL	374	367	375	380	385	382	376	375	374	365	361
% CHANGE		-1.9%	2.2%	1.3%	1.3%	-0.8%	-1.6%	-0.3%	-0.3%	-2.4%	-1.1%

SUNRISE DRIVE ELEMENTARY SCHOOL
PROJECTED ENROLLMENT - SECTIONAL ANALYSIS

based on the maximum class size of 25 for K - 5

GRADE	2022	2023	2024	2025	2026	2027	2028	2029	2030	2031	2032
	Actual										
KINDERGARTEN (25)	61	57	57	63	58	56	56	56	55	55	54
Sections	3	3	3	3	3	3	3	3	3	3	3
Avg Section Size	20.3	19.0	19.0	21.0	19.3	18.7	18.7	18.7	18.3	18.3	18.0
FIRST (25)	59	63	59	59	65	60	58	58	58	57	57
Sections	3	3	3	3	3	3	3	3	3	3	3
Avg Section Size	19.7	21.0	19.7	19.7	21.7	20.0	19.3	19.3	19.3	19.0	19.0
SECOND (25)	59	61	65	61	61	67	62	60	60	60	59
Sections	3	3	3	3	3	3	3	3	3	3	3
Avg Section Size	19.7	20.3	21.7	20.3	20.3	22.3	20.7	20.0	20.0	20.0	19.7
THIRD (25)	63	59	61	65	61	61	67	62	60	60	60
Sections	3	3	3	3	3	3	3	3	3	3	3
Avg Section Size	21.0	19.7	20.3	21.7	20.3	20.3	22.3	20.7	20.0	20.0	20.0
FOURTH (25)	54	65	61	63	67	63	63	69	64	62	62
Sections	3	3	3	3	3	3	3	3	3	3	3
Avg Section Size	18.0	21.7	20.3	21.0	22.3	21.0	21.0	23.0	21.3	20.7	20.7
FIFTH (25)	70	53	64	60	63	67	62	62	69	63	61
Sections	3	3	3	3	3	3	3	3	3	3	3
Avg Section Size	23.3	17.7	21.3	20.0	21.0	22.3	20.7	20.7	23.0	21.0	20.3
SC SPED	8	9	8	9	10	8	8	8	8	8	8
Sections	1	1	1	1	1	1	1	1	1	1	1
Total Enrollment	374	367	375	380	385	382	376	375	374	365	361
Total Sections	19	19	19	19	19	19	19	19	19	19	19
Avg Section Size (reg ed)	20.3	19.9	20.4	20.6	20.8	20.8	20.4	20.4	20.3	19.8	19.6

Note: The boxed cells indicate the average section size is approaching the maximum class size for the grade level.

SAYVILLE UNION FREE SCHOOL DISTRICT
 ELEMENTARY SECTION ANALYSIS - SUMMARY

based on the maximum class size of 25 for K - 5

GRADE	2022	2023	2024	2025	2026	2027	2028	2029	2030	2031	2032
	Actual										
PRE-KINDERGARTEN (18)	74	72	72	72	72	72	72	72	72	72	72
Sections	4	4	4	4	4	4	4	4	4	4	4
Avg Section Size	18.5	18.0	18.0	18.0	18.0	18.0	18.0	18.0	18.0	18.0	18.0
KINDERGARTEN (25)	179	169	169	189	172	168	167	166	164	163	161
Sections	9	9	9	9	9	9	9	9	9	9	9
Avg Section Size	19.9	18.8	18.8	21.0	19.1	18.7	18.6	18.4	18.2	18.1	17.9
FIRST (25)	178	183	173	173	193	176	172	171	170	168	167
Sections	9	9	9	9	9	9	9	9	9	9	9
Avg Section Size	19.8	20.3	19.2	19.2	21.4	19.6	19.1	19.0	18.9	18.7	18.6
SECOND (25)	164	179	184	174	174	194	177	173	172	171	169
Sections	8	9	9	9	9	9	9	9	9	9	9
Avg Section Size	20.8	19.9	20.4	19.3	19.3	21.6	19.7	19.2	19.1	19.0	18.8
THIRD (25)	180	167	182	187	177	177	197	180	176	175	174
Sections	9	8	9	9	9	9	9	9	9	9	9
Avg Section Size	20.0	21.2	20.2	20.8	19.7	19.7	21.9	20.0	19.6	19.4	19.3
FOURTH (25)	163	182	169	184	189	179	179	199	182	178	177
Sections	9	9	8	9	9	9	9	9	9	9	9
Avg Section Size	18.1	20.2	21.4	20.4	21.0	19.9	19.9	22.1	20.2	19.8	19.7
FIFTH (25)	206	162	181	168	183	188	178	178	198	181	177
Sections	10	9	9	8	9	9	9	9	9	9	9
Avg Section Size	20.8	18.0	20.1	21.3	20.3	20.9	19.8	19.8	22.0	20.1	19.7
SC SPED	35	35	32	36	37	32	31	31	31	30	30
Sections	4	4	4	4	4	4	4	4	4	4	4
Total Enrollment (K - 5)	1,105	1,077	1,090	1,111	1,125	1,114	1,101	1,098	1,093	1,066	1,055
Total Sections (K - 5)	58	57	57	57	58	58	58	58	58	58	58
Avg Section Size (reg ed)	19.9	19.7	20.0	20.4	20.1	20.0	19.8	19.8	19.7	19.2	19.0
Total Enrollment (PK - 5)	1,179	1,149	1,162	1,183	1,197	1,186	1,173	1,170	1,165	1,138	1,127
Total Sections (PK - 5)	62	61	61	61	62	62	62	62	62	62	62

Note: PK is full-day, capped at 4 sections with a maximum of 18 students per section.
 Note: The boxed cells indicate the average section size is approaching the maximum class size for the grade level.

SAYVILLE MIDDLE SCHOOL
HISTORICAL ENROLLMENT

GRADE	2012	2013	2014	2015	2016	2017	2018	2019	2020	2021	2022
SIXTH	244	232	253	228	233	244	227	218	223	191	203
SEVENTH	267	249	230	263	228	237	241	222	209	221	196
EIGHTH	250	264	247	234	262	231	240	241	221	200	220
TOTAL	761	745	730	725	723	712	708	681	653	612	619
% CHANGE		-2.1%	-2.0%	-0.7%	-0.3%	-1.5%	-0.6%	-3.8%	-4.1%	-6.3%	1.1%
MIGRATION	12 - 13	13 - 14	14 - 15	15 - 16	16 - 17	17 - 18	18 - 19	19 - 20	20 - 21	21 - 22	AVERAGE
6 - 7	102.0%	99.1%	104.0%	100.0%	101.7%	98.8%	97.8%	95.9%	99.1%	102.6%	99.2%
7 - 8	98.9%	99.2%	101.7%	99.6%	101.3%	101.3%	100.0%	99.5%	95.7%	99.5%	99.7%

SAYVILLE MIDDLE SCHOOL
PROJECTED ENROLLMENT

GRADE	2022	2023	2024	2025	2026	2027	2028	2029	2030	2031	2032
	Actual										
SIXTH	203	213	172	185	174	195	196	185	185	206	188
SEVENTH	196	201	211	171	184	173	193	194	184	184	204
EIGHTH	220	195	200	210	170	183	172	192	193	183	183
TOTAL	619	609	583	566	528	551	561	571	562	573	575
% CHANGE		-1.6%	-4.3%	-2.9%	-6.7%	4.4%	1.8%	1.8%	-1.6%	2.0%	0.3%

SAYVILLE HIGH SCHOOL
HISTORICAL ENROLLMENT

GRADE	2012	2013	2014	2015	2016	2017	2018	2019	2020	2021	2022
NINTH	231	247	246	247	219	266	226	242	234	216	199
TENTH	280	225	245	253	243	227	269	231	236	230	214
ELEVENTH	245	284	225	244	251	247	233	268	232	239	230
TWELFTH	291	249	280	229	247	247	252	231	269	235	238
TOTAL	1,047	1,005	996	973	960	987	980	972	971	920	881
% CHANGE		-4.0%	-0.9%	-2.3%	-1.3%	2.8%	-0.7%	-0.8%	-0.1%	-5.3%	-4.2%
MIGRATION	12 - 13	13 - 14	14 - 15	15 - 16	16 - 17	17 - 18	18 - 19	19 - 20	20 - 21	21 - 22	AVERAGE
9 - 10	97.4%	99.2%	102.8%	98.4%	103.7%	101.1%	102.2%	97.5%	98.3%	99.1%	99.3%
10 - 11	101.4%	100.0%	99.6%	99.2%	101.6%	102.6%	99.6%	100.4%	101.3%	100.0%	100.3%
11 - 12	101.6%	98.6%	101.8%	101.2%	98.4%	102.0%	99.1%	100.4%	101.3%	99.6%	100.4%

SAYVILLE HIGH SCHOOL
PROJECTED ENROLLMENT

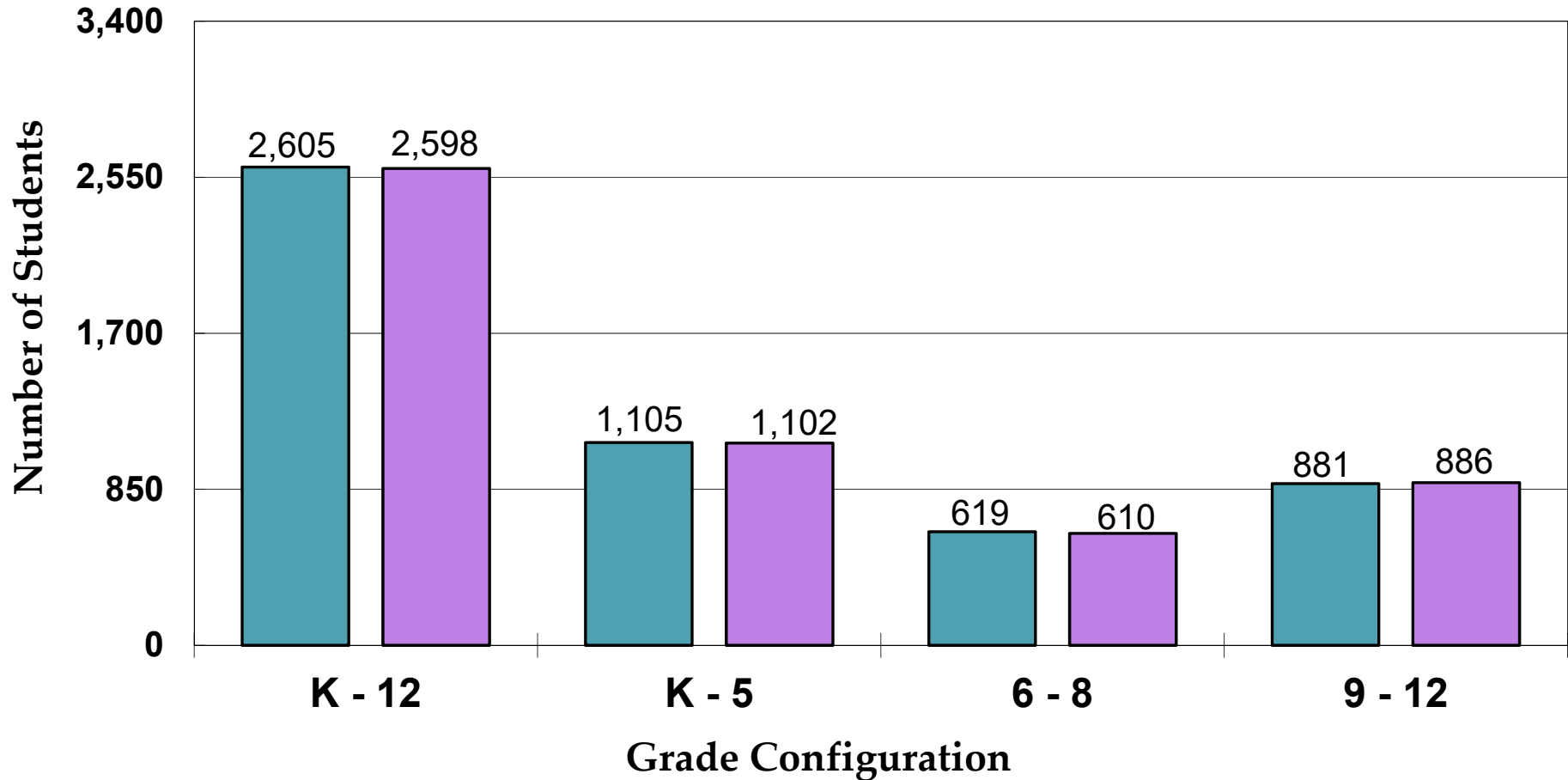
GRADE	2022	2023	2024	2025	2026	2027	2028	2029	2030	2031	2032
	Actual										
NINTH	199	217	193	198	207	168	181	170	190	191	181
TENTH	214	198	215	192	197	205	167	180	169	189	190
ELEVENTH	230	215	199	216	193	198	206	168	181	170	190
TWELFTH	238	231	216	200	217	194	199	207	169	182	171
TOTAL	881	861	823	806	814	765	753	725	709	732	732
% CHANGE		-2.3%	-4.4%	-2.1%	1.0%	-6.0%	-1.6%	-3.7%	-2.2%	3.2%	0.0%

Appendix B

Sayville Union Free School District

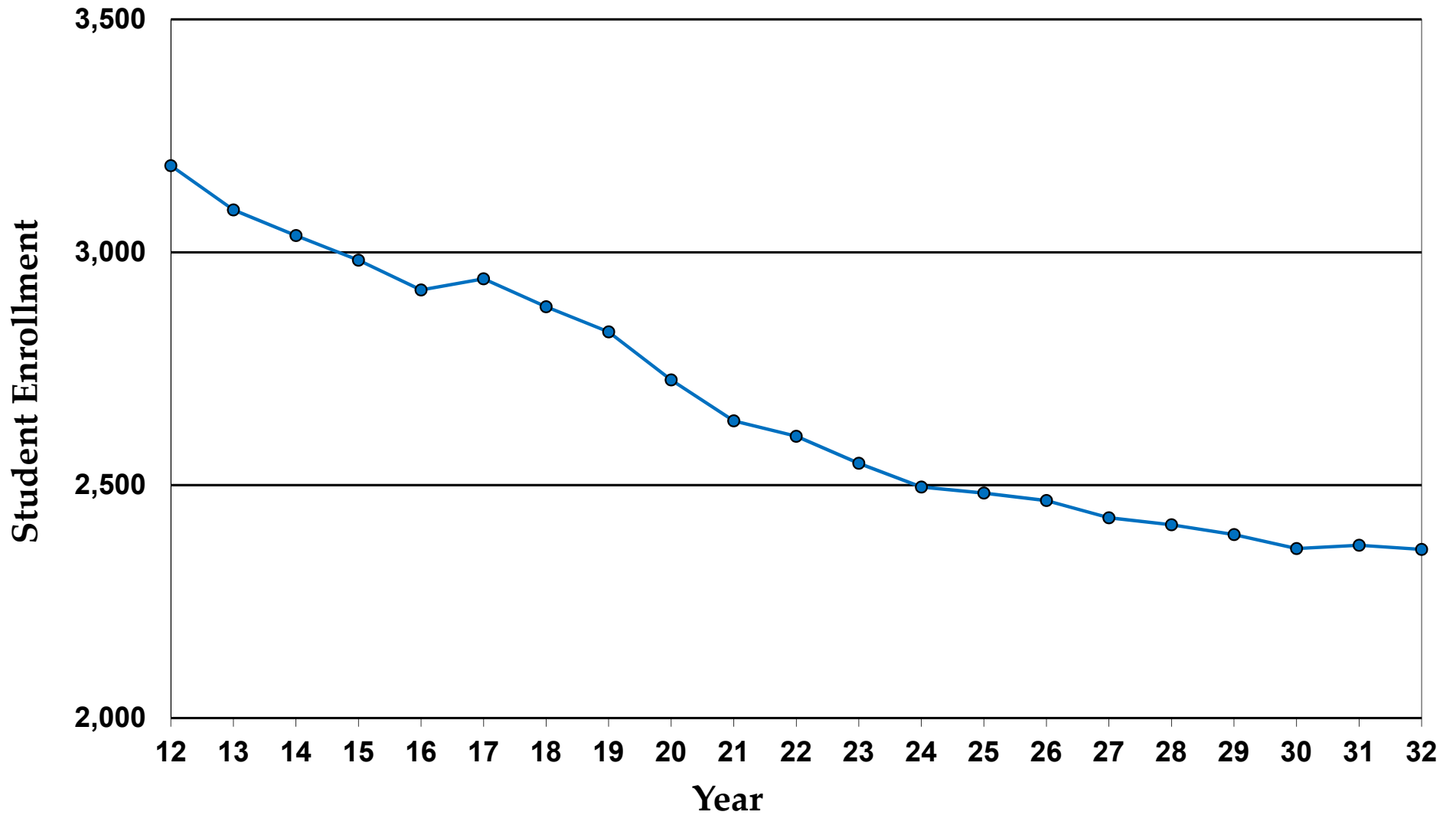
Accuracy of 2021-22 Western Suffolk BOCES Projections for 2022-23

2022-23 Enrollment



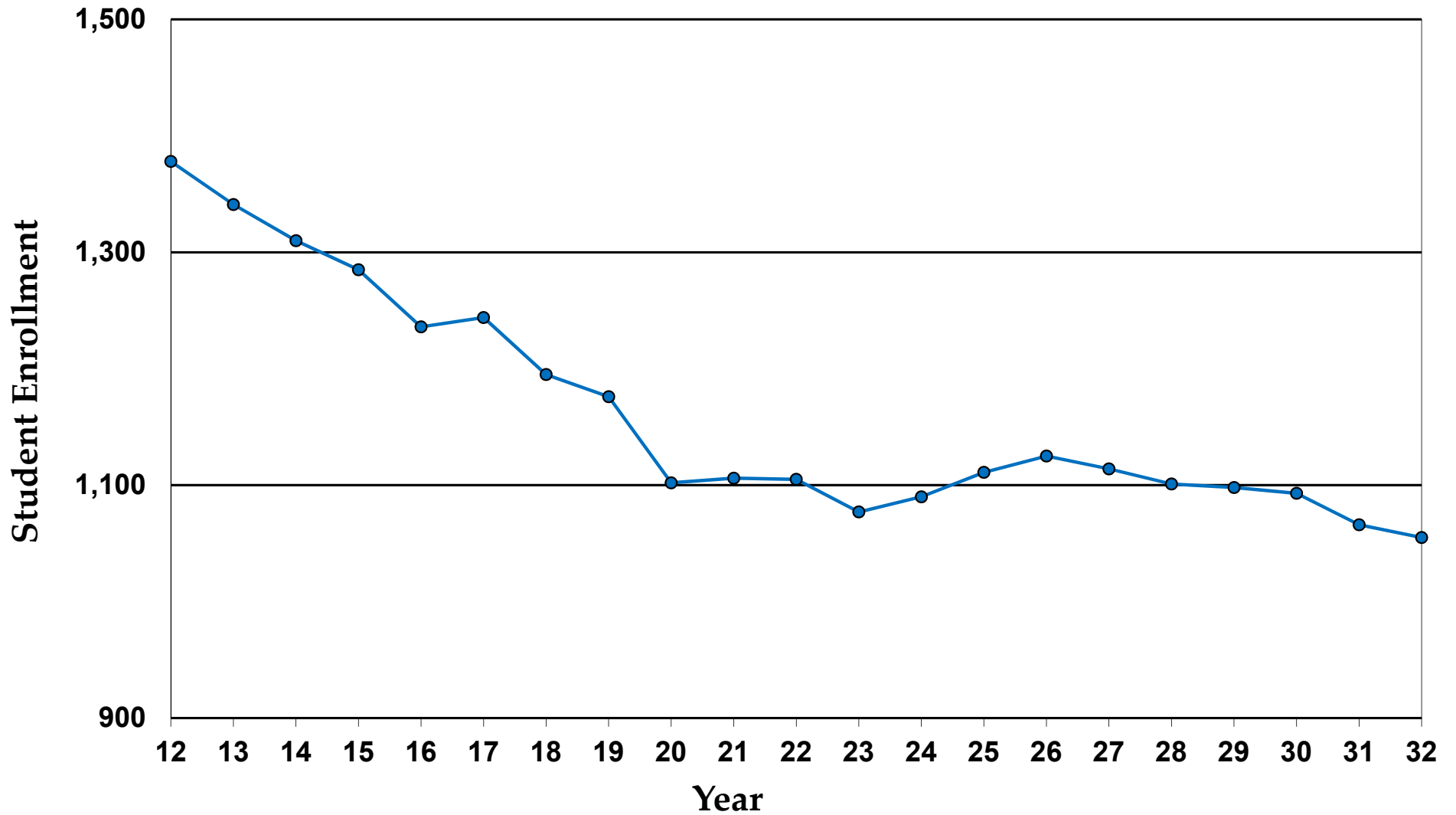
Sayville Union Free School District

Enrollment: Grades K - 12



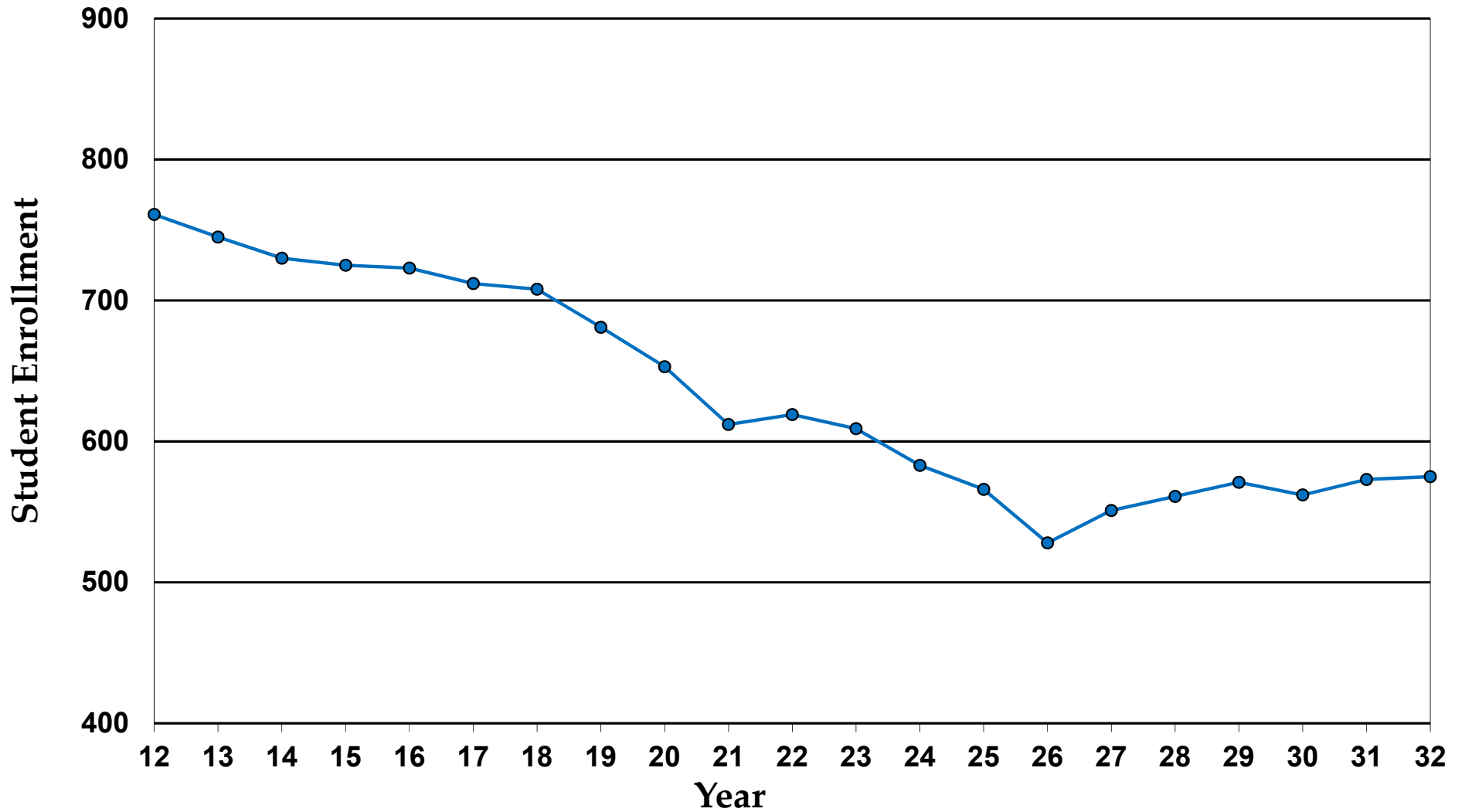
Sayville Union Free School District

Enrollment: Grades K - 5



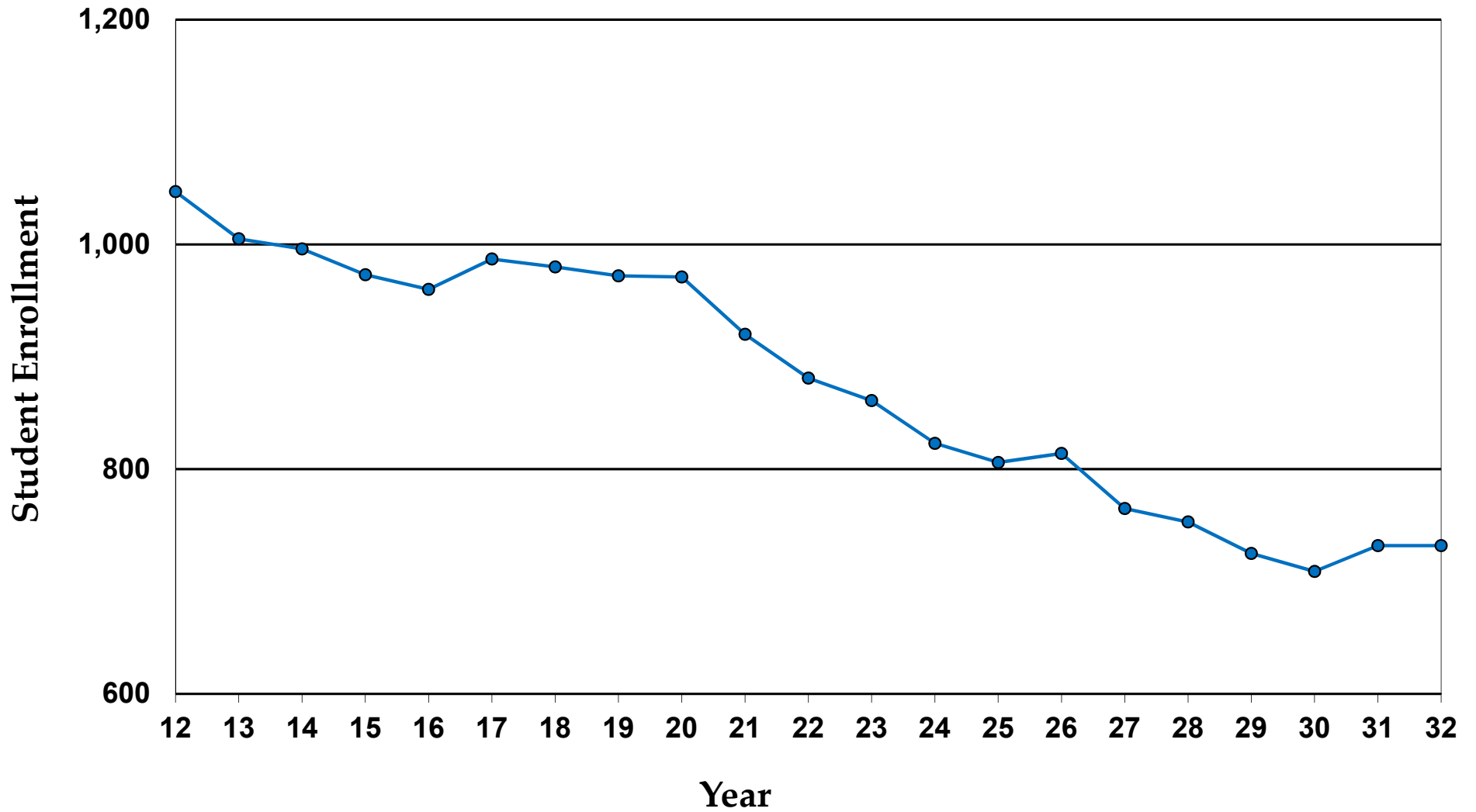
Sayville Union Free School District

Enrollment: Grades 6 - 8

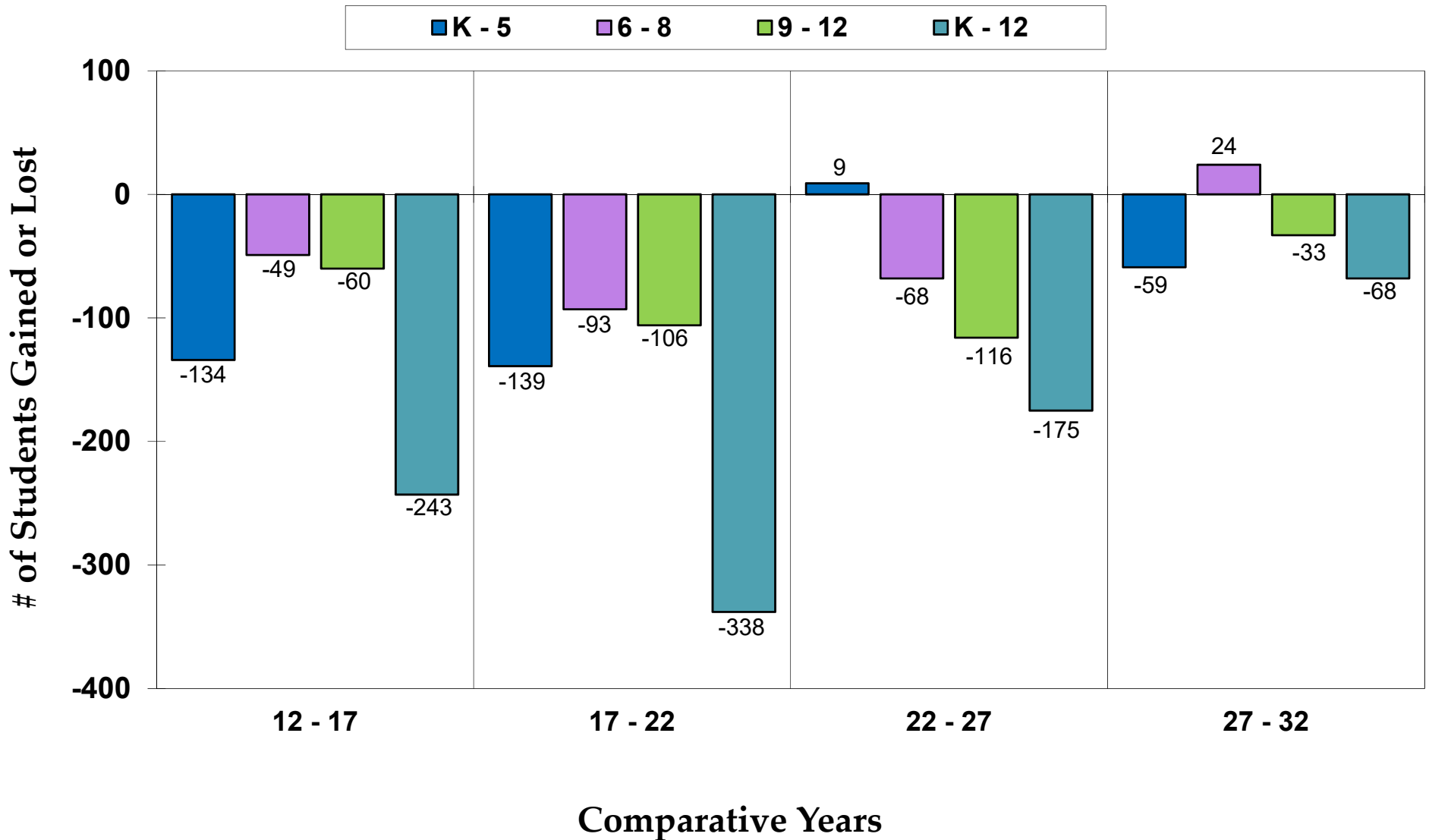


Sayville Union Free School District

Enrollment: Grades 9 - 12



Sayville Union Free School District Enrollment Change 2012 - 2032



Ms. Jeanette Santos, President
Ms. Ilene Herz, Esq., Vice President
Ms. Mary Ellen Cunningham
Mr. James Kaden
Mr. Brian J. Sales
Mr. Peter Wunsch
Ms. Maryann Zumpano
Ms. Joanne Klein, District Clerk

Mr. Michael Flynn
Chief Operating Officer





Division of Instructional Support Services

Office of School Planning & Research
31 Lee Avenue
Wheatley Heights, NY 11798
631-595-6802