



## New here? We've got you covered!

As a new employee, choosing benefits can seem overwhelming. Get help with sorting out important details, reviewing your options and getting your questions answered.

Your American Fidelity account manager can help you create a personalized plan that fits your needs.



### Limited Benefit Accident Only Insurance

- Helps with out-of-pocket expenses for the treatment of covered accidental injuries.
- Provides benefit payments directly to you.
- Some covered accidents include burns, a sprained ankle or spider bites.

Learn more: [americanfidelity.com/accident](https://americanfidelity.com/accident)



### Disability Income Insurance

- Helps protect your finances in case of a covered injury or illness.
- Provides a benefit to help cover costs while you are unable to work.
- Select from custom coverage options.

Learn more: [americanfidelity.com/disability](https://americanfidelity.com/disability)



### Limited Benefit Cancer Insurance

- May help protect you financially if you are diagnosed with a covered cancer so you can focus on recovery.
- Provides benefit payments directly to you.
- May cover expenses like travel and lodging, experimental treatments and second opinions.

Learn more: [americanfidelity.com/cancer](https://americanfidelity.com/cancer)



### Life Insurance

- May help financially protect your family if you were to pass away.
- Several plans available to select the coverage that best fits you and your family.
- Provides immediate coverage.

Learn more: [americanfidelity.com/life](https://americanfidelity.com/life)



Schedule your enrollment  
appointment after completing  
orientation 800-365-8306

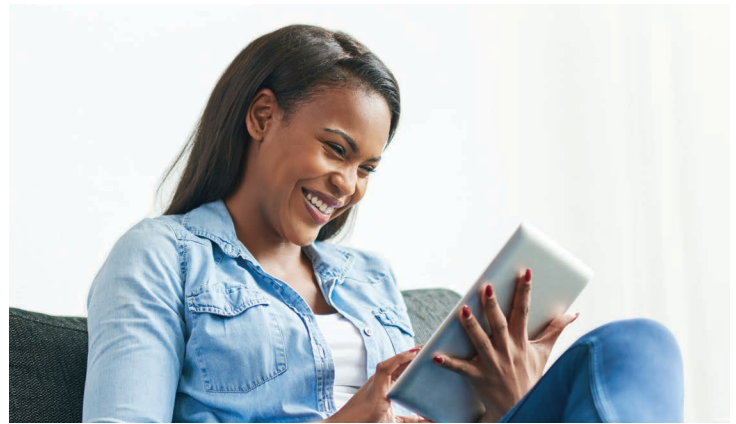
**AMERICAN  
FIDELITY**   
a different opinion



## Annuities

- Provides a valuable savings vehicle with growth potential and flexibility.
- Allows the opportunity for guaranteed lifetime income.
- Offers flexibility for a diversified retirement portfolio.

Learn more: [americanfidelity.com/annuities](https://americanfidelity.com/annuities)



## File Your Claims Faster

Your online account is convenient, secure and provides faster claim processing than filing by paper.

You can file your claim, upload documentation and track your claims with an online account.

[americanfidelity.com/register](https://americanfidelity.com/register)



## Healthcare Flexible Spending Accounts

### Save money on eligible medical expenses.

Healthcare Flexible Spending Accounts (HCFSA) allow you to save part of your paycheck, before taxes, to pay for eligible medical costs throughout the year.

#### Features:

- Funds available at the beginning of your plan year
- Reduce your taxable income
- Contribute as much, or as little, as you want (up to the annual limit)

Learn more at  
[americanfidelity.com/fsa](https://americanfidelity.com/fsa)



Calculate medical costs  
[americanfidelity.com/fsa-worksheet](https://americanfidelity.com/fsa-worksheet)

### Examples of Eligible Expenses

- Asthma treatments
- Chiropractic care
- Contact lenses
- Copays
- Dental services
- Eye exam/eyeglasses
- Fertility treatments
- Laser eye surgery
- Over-the-counter medications
- First aid kits
- Physical therapy
- Prescriptions
- Prenatal care
- Sunscreen with 15 SPF or higher
- Breast pumps and supplies

[americanfidelity.com/eligible-expenses](https://americanfidelity.com/eligible-expenses)

## Dependent Care Accounts

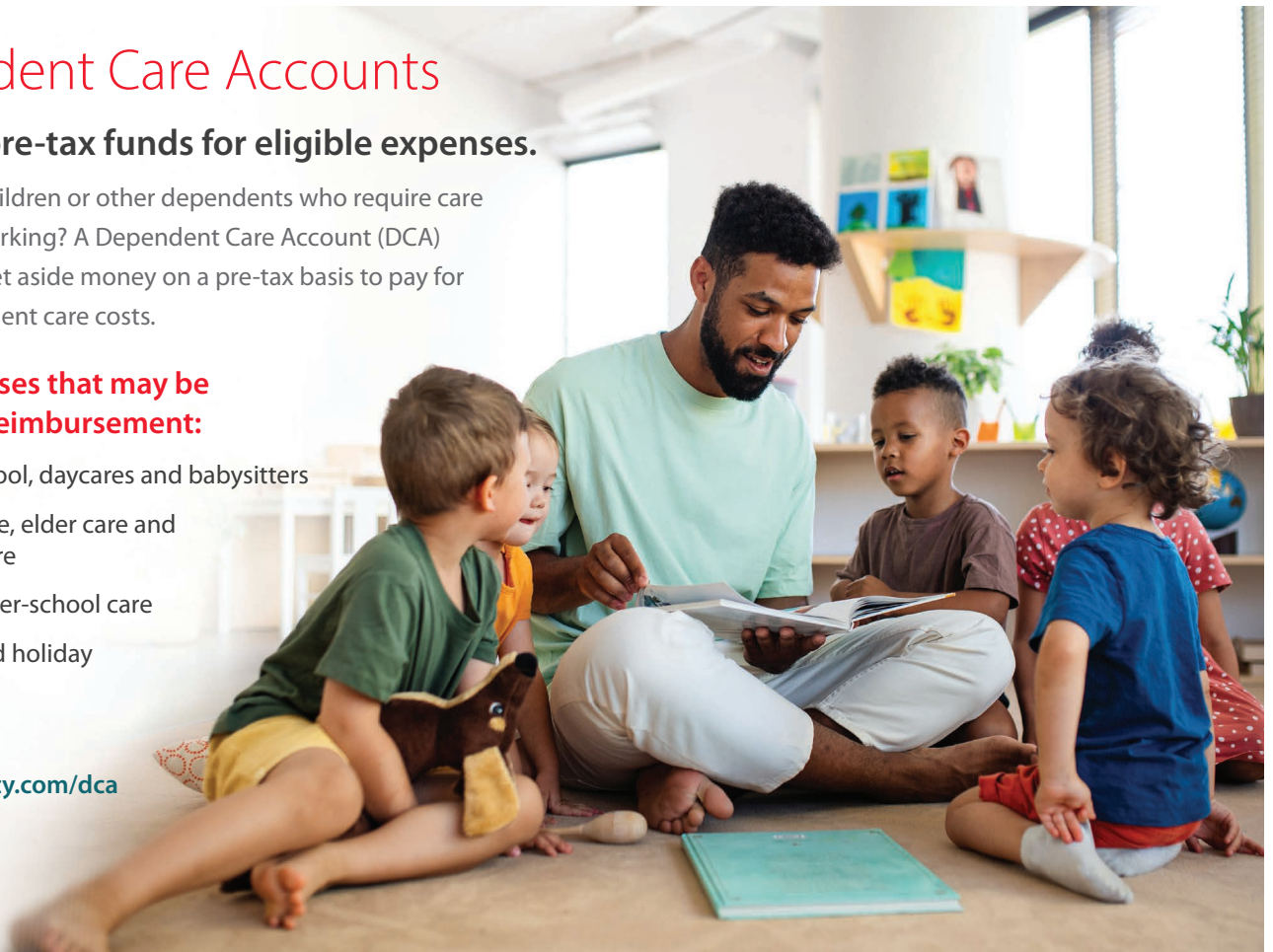
### Set aside pre-tax funds for eligible expenses.

Do you have children or other dependents who require care while you're working? A Dependent Care Account (DCA) allows you to set aside money on a pre-tax basis to pay for eligible dependent care costs.

#### Some expenses that may be eligible for reimbursement:

- Nursery school, daycares and babysitters
- In-home care, elder care and custodial care
- Before or after-school care
- Summer and holiday day camps

Learn more at  
[americanfidelity.com/dca](https://americanfidelity.com/dca)



## Online Account Support

### Access your information 24/7.

Browse your benefits and reimbursement information anytime you want, all in one convenient place.



#### File a Claim

Submit claims for your insurance benefits or reimbursement accounts



#### Track Claims

View the status of your benefits and reimbursements claims



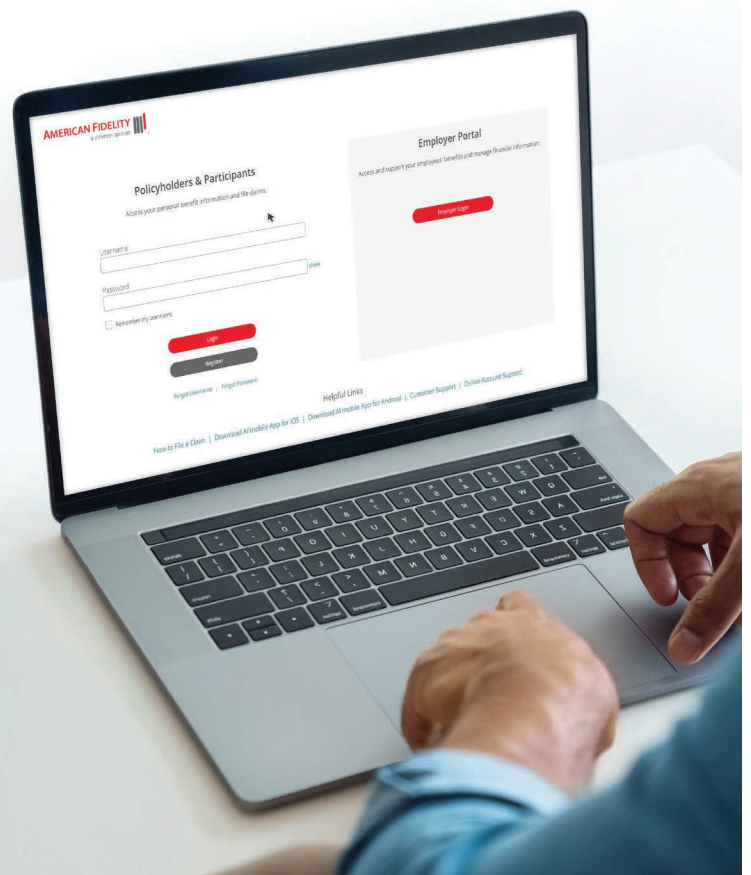
#### Upload Documentation

Attach receipts and documentation for claims



#### Manage Preferences

Edit your profile, enroll in direct deposit, and elect communication preferences



## Bring Home More From Your Paycheck

Take advantage of tax savings when paying for medical coverage and out-of-pocket expenses before taxes. This could reduce your taxable income and allow you to take home more money.

### How does it work?

Consider this example: Jane makes \$2,000 per paycheck and is paid twice a month. Under a tax-savings plan, she would save \$140 per month, adding up to \$1,680 a year. Calculate your possible savings: [americanfidelity.com/s125-calculator](https://americanfidelity.com/s125-calculator)

Earnings	Post-Tax	Pre-Tax
Gross Pay	\$2,000	\$2,000
Eligible Benefit Contributions	N/A	-\$250
<b>Taxable Gross</b>	<b>\$2,000</b>	<b>\$1,750</b>
Estimated Taxes (Federal & State @ 20%)	-\$400	-\$350
Estimated FICA (7.65%)	-\$153	-\$133
Out-of-Pocket Medical Expenses	-\$250	N/A
<b>Take Home Pay</b>	<b>\$1,197</b>	<b>\$1,267</b>

*A savings  
of \$1,680  
a year*

*Example is for illustrative purposes only. Please consult your tax advisor for actual tax savings.*

## 24/7 Access to Your Benefits

With AFmobile®, you can manage your reimbursement accounts and insurance benefits from the palm of your hand.

Download AFmobile today.

[americanfidelity.com/afmobile](https://americanfidelity.com/afmobile)



*These products may contain limitations, exclusions, and waiting periods. The following statements only apply if the product is displayed on this document. **These products are not appropriate for people who are eligible for Medicaid coverage: Accident Only, Cancer, Critical Illness, Hospital Indemnity, Hospital GAP PLAN® and Hospital GAP Plan Choice® Insurance.** Variable Annuities are offered by American Fidelity Securities, Inc., a registered Broker Dealer. Please contact your tax advisor for information regarding your specific situation. HSA contributions are not subject to federal and most states' income tax. State income tax may apply in California and New Jersey. Please consult a tax advisor for your state's specific rules. HRAs are not part of a Section 125 Plan. Contributions made by employer not employee.*

#### Allen Perry

Account Executive, CA License OH71313  
Northern California Branch  
800-365-8306 • 916-683-8306  
[allen.perry@americanfidelity.com](mailto:allen.perry@americanfidelity.com)



American Fidelity Assurance Company  
[americanfidelity.com](https://americanfidelity.com)