



# ***ATHLETIC COMPLEXES MASTERPLANNING***

***URBANA CITY SCHOOLS***

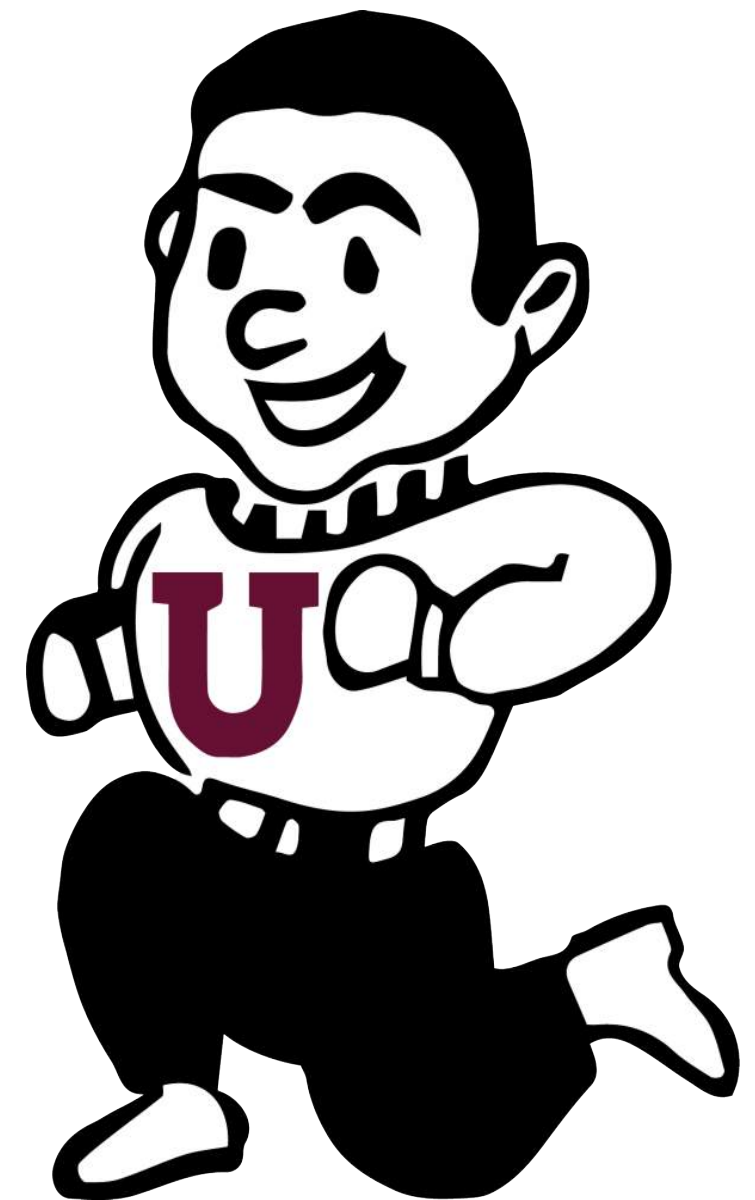
APRIL 11, 2024

MSA

SPORT

# WHY ARE WE HERE...

- Feedback from community members
- No final decisions have been made
- We need to hear from you
- Development of a Master Plan focused on providing Urbana student athletes with high quality & improved athletic facilities
- We are committed to an open and transparent process
- There is no zero cost option



# AGENDA

## 1. Facilities Master Plan

- What is a facilities master plan
- Process
- Objectives

## 2. Existing Conditions/Assessment

- Boyce Street
- Hillclimbers Stadium

## 3. Benchmarking

## 4. Proposed Master Plan



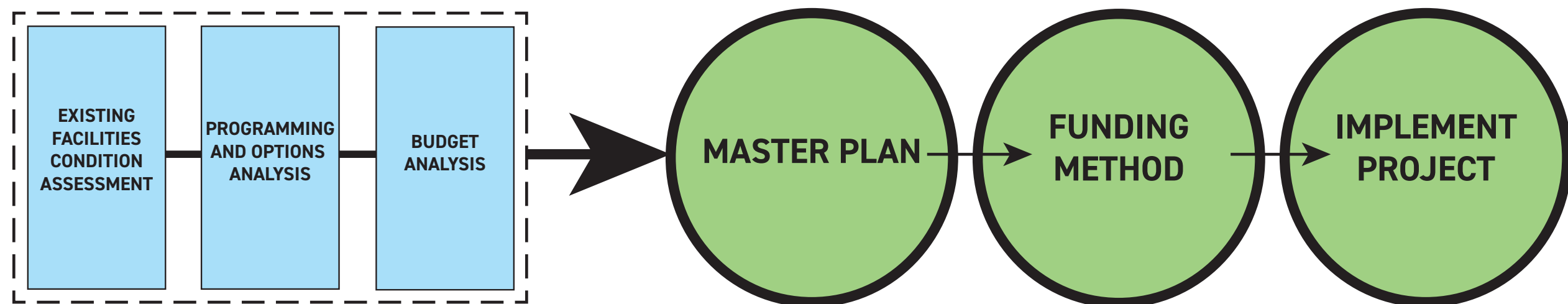
# FACILITIES MASTER PLAN



# FACILITIES MASTER PLAN

## What is an Athletics Master Plan?

- An Athletics Master Plan takes a broad look at your school districts athletic facilities, assessing them for both physical adequacy as well as program delivery viewpoint
- The ultimate goal of the Master Plan process is to establish a road map for making improvements to or the replacement of each structure or area of the facilities.
- The Master Plan will also determine timelines for implementation as well as project budgets.
- The district will utilize the data from the Athletics Master Plan to prioritize overall project requirements as well as determine funding.



# FACILITIES MASTER PLAN

## THE PROCESS

- Open, Transparent process inclusive of all stakeholders (School District, Community, Parents, Student Athletes).
- The process began in 2018 with the primary focus on improvements to the Hillclimbers Stadium. Then picked up again in the summer of 2023 to include a broader look at all outdoor athletic facilities.
- Master Plan success requires engagement & input from the Community, Parents, as well as Student Athletes.



# FACILITIES MASTER PLAN

## OBJECTIVES

- Create and maintain athletic facilities that promote growth for the school district, Urbana Athletics and the community as a whole.
- Opportunity to create best in class athletic facilities.
- All-weather, year-round use.
- Design for multi-use to expand revenue generating opportunities.



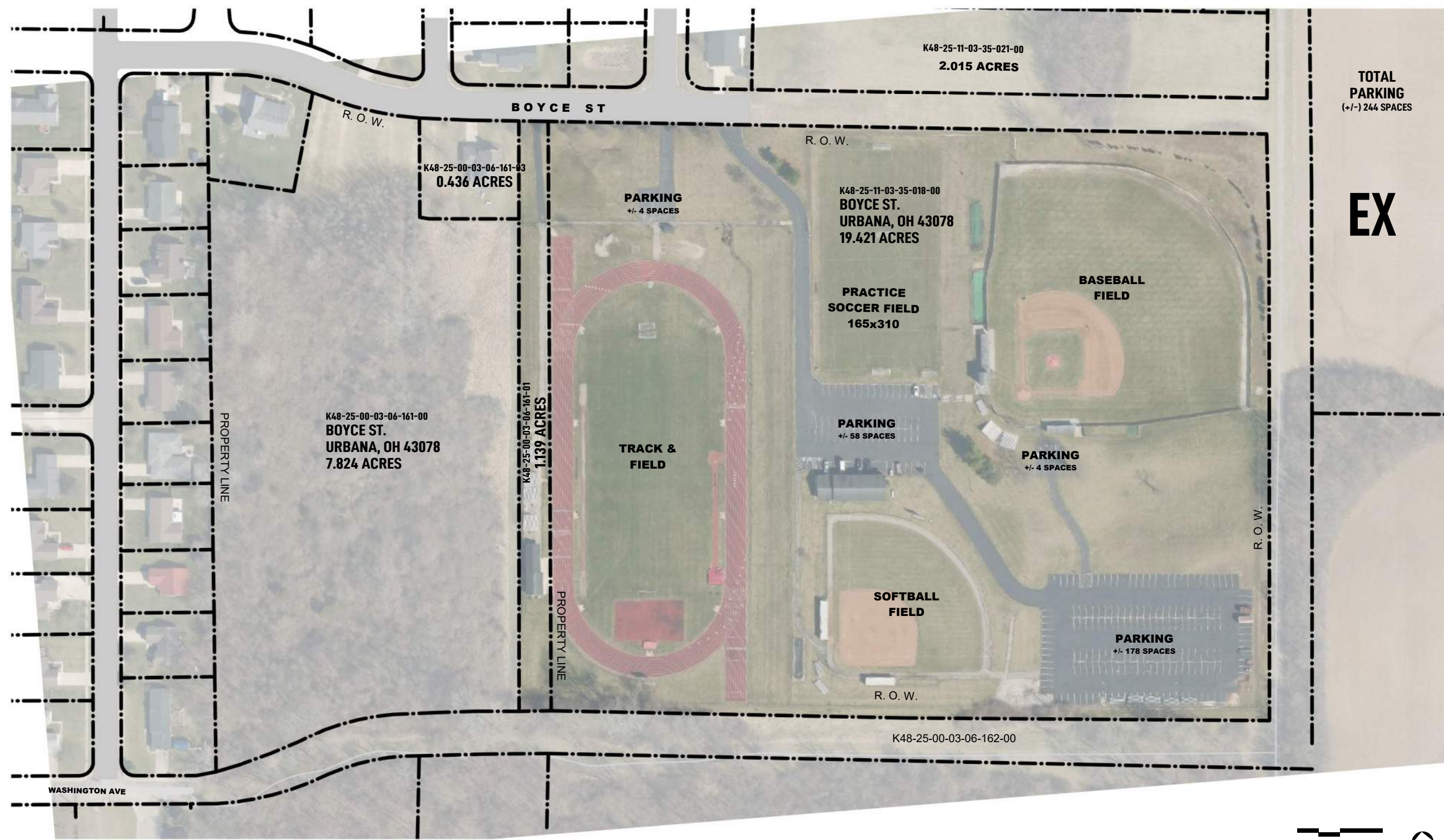
# EXISTING CONDITIONS/ASSESSMENT

- BOYCE STREET ATHLETIC COMPLEX
- HILLCLIMBER STADIUM





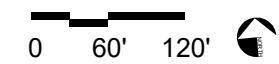
# EXISTING CONDITIONS/ASSESSMENT



TOTAL PARKING (+/-) 244 SPACES

EX

Boyce Street Athletic Complex





# EXISTING CONDITIONS/ASSESSMENT



Limited bleacher seating



Outdated shotput/discus



Cramped/outdated duggouts



Non-existent softball pressbox



Worn and water damage track



Overgrown softball field



Heavily worn and damaged batting cages



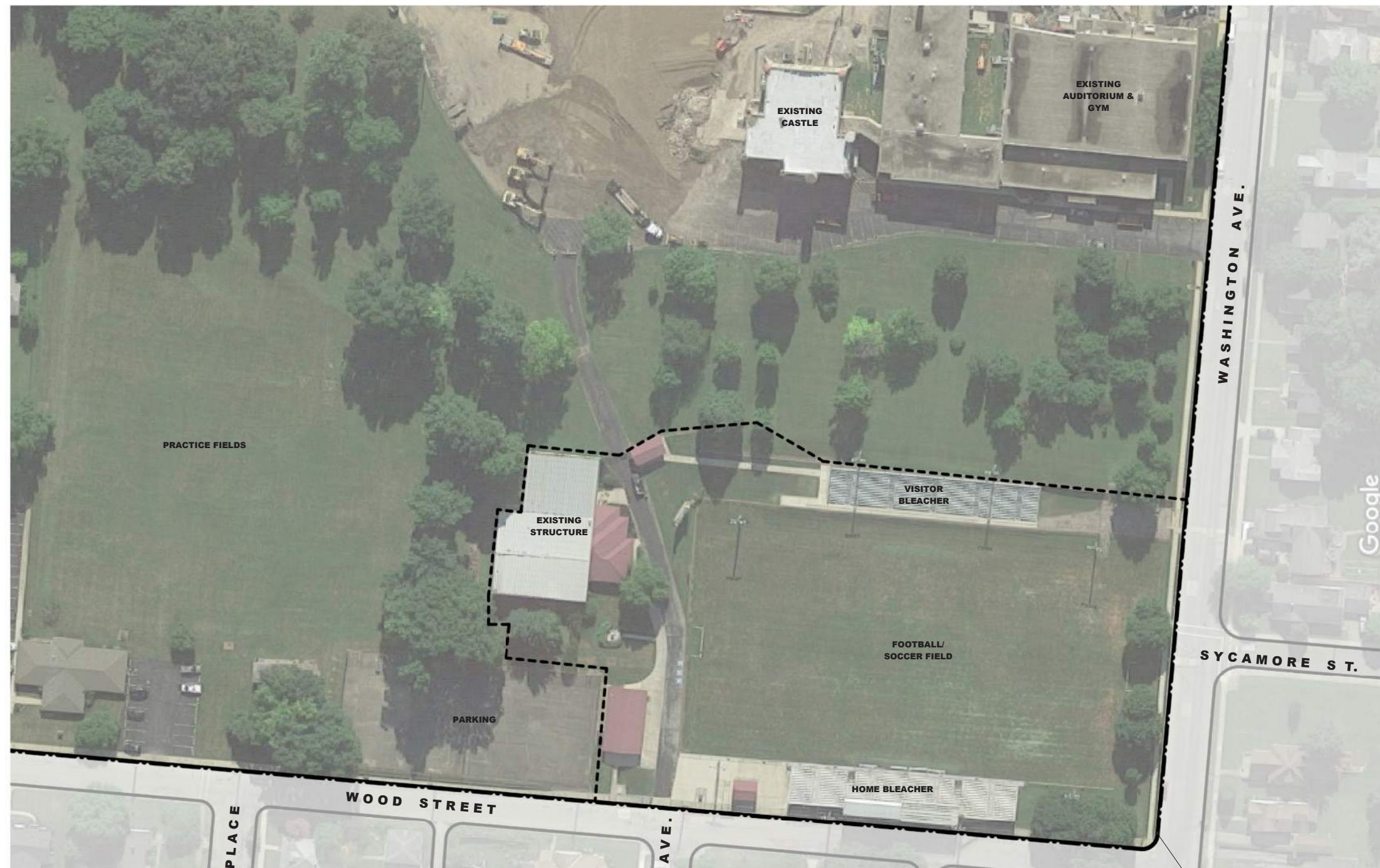
Crowded maintenance

## Boyce Street Athletic Complex





# EXISTING CONDITIONS/ASSESSMENT



Urbana High School





# EXISTING CONDITIONS/ASSESSMENT



Support building and behind



Path leading to home bleacher



Visitor side bleacher



Home side bleacher underside



Rusted fencing



Exposed bleacher structure



Utility support building



Entrance to football

## Urbana High School



# BENCHMARKING

- JONATHAN ALDER LOCAL SCHOOLS
- MARYSVILLE EXEMPTED VILLAGE SCHOOLS
- BENJAMIN LOGAN LOCAL SCHOOL DISTRICT
- LONDON CITY SCHOOL DISTRICT
- BELLEFONTAINE CITY SCHOOLS





# BENCHMARKING



Multisport Synthetic Sport field



Stadium Entirety



Stadium Aerial view

## JONATHAN ALDER HIGH SCHOOL PLAIN CITY, OHIO

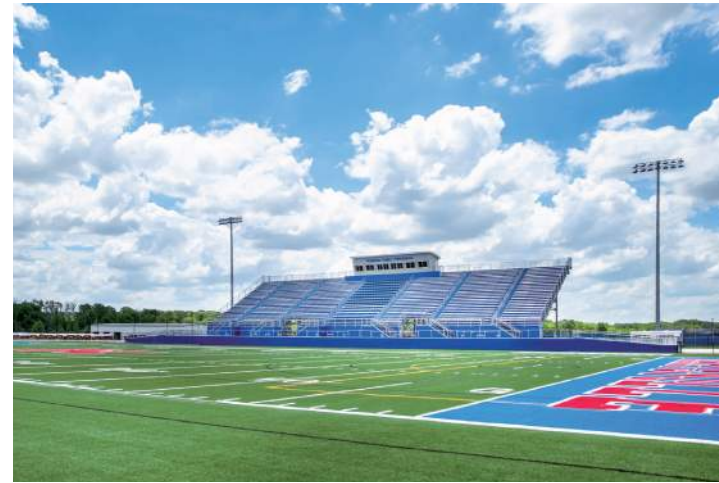




# BENCHMARKING



Home Side Pressbox



Home Side Bleacher



Visitor Side Bleacher



Scoreboard



Athletic Facility Aerial



Branded Gate - Home Entry



Branded Gate - Visitor Entry



Stadium Aerial view

## MARYSVILLE HIGH SCHOOL MARYSVILLE, OHIO





# BENCHMARKING



Athletic Complex Aerial view - Looking North



Home Side Bleachers + Pressbox



Athletic Complex Aerial view - Looking South



Visitor Side Bleachers



Multi-sport Synthetic Athletic Field



Stadium Aerial view

## BENJAMIN LOGAN HIGH SCHOOL BELLFONTAINE, OHIO





# BENCHMARKING



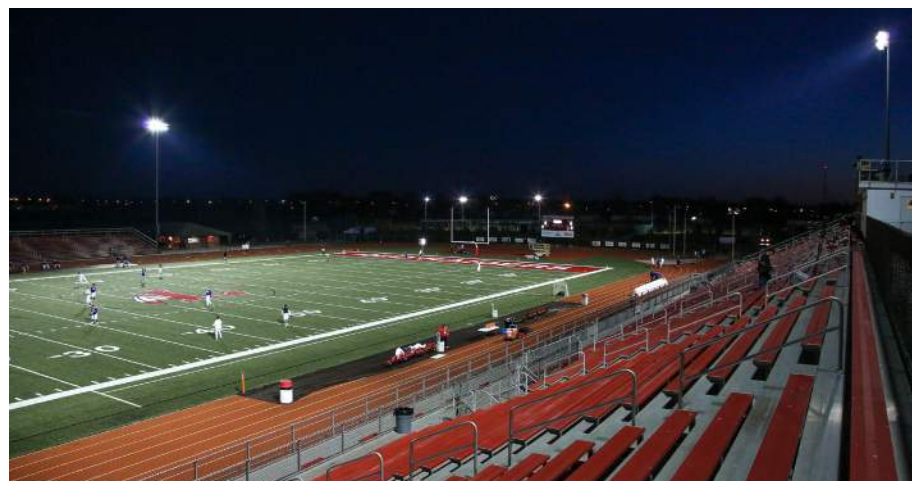
North Endzone view from Home Bleachers



Home Side Bleachers



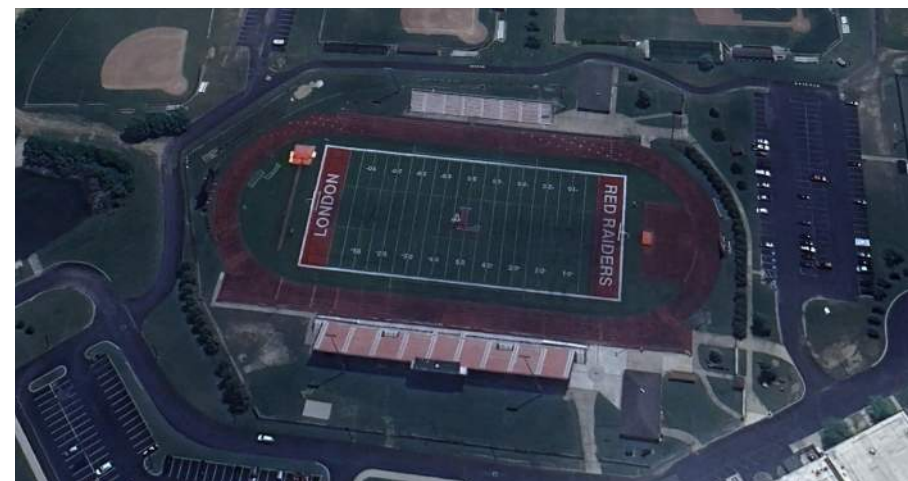
Visitor Side Bleachers - Central Field view



South Endzone view from Home Bleachers at evening hours



End Pad for Field Events



Stadium Aerial view

## LONDON HIGH SCHOOL LONDON, OHIO





# BENCHMARKING



Home Bleachers - South End



Stadium During Night Game



Elevated view - Down Field



Home Bleachers - North End



Stadium Dynamic view



Stadium Aerial view

## BELLEFONTAINE HIGH SCHOOL BELLEFONTAINE, OHIO





# BENCHMARKING

## CENTRAL BUCKEYE CONFERENCE



BELLEFONTAINE



BENJAMIN LOGAN



GRAHAM



INDIAN LAKE



JONATHAN ALDER



KENTON RIDGE



LONDON



NORTH UNION



NORTHWESTERN



SHAWNEE



TECUMSEH

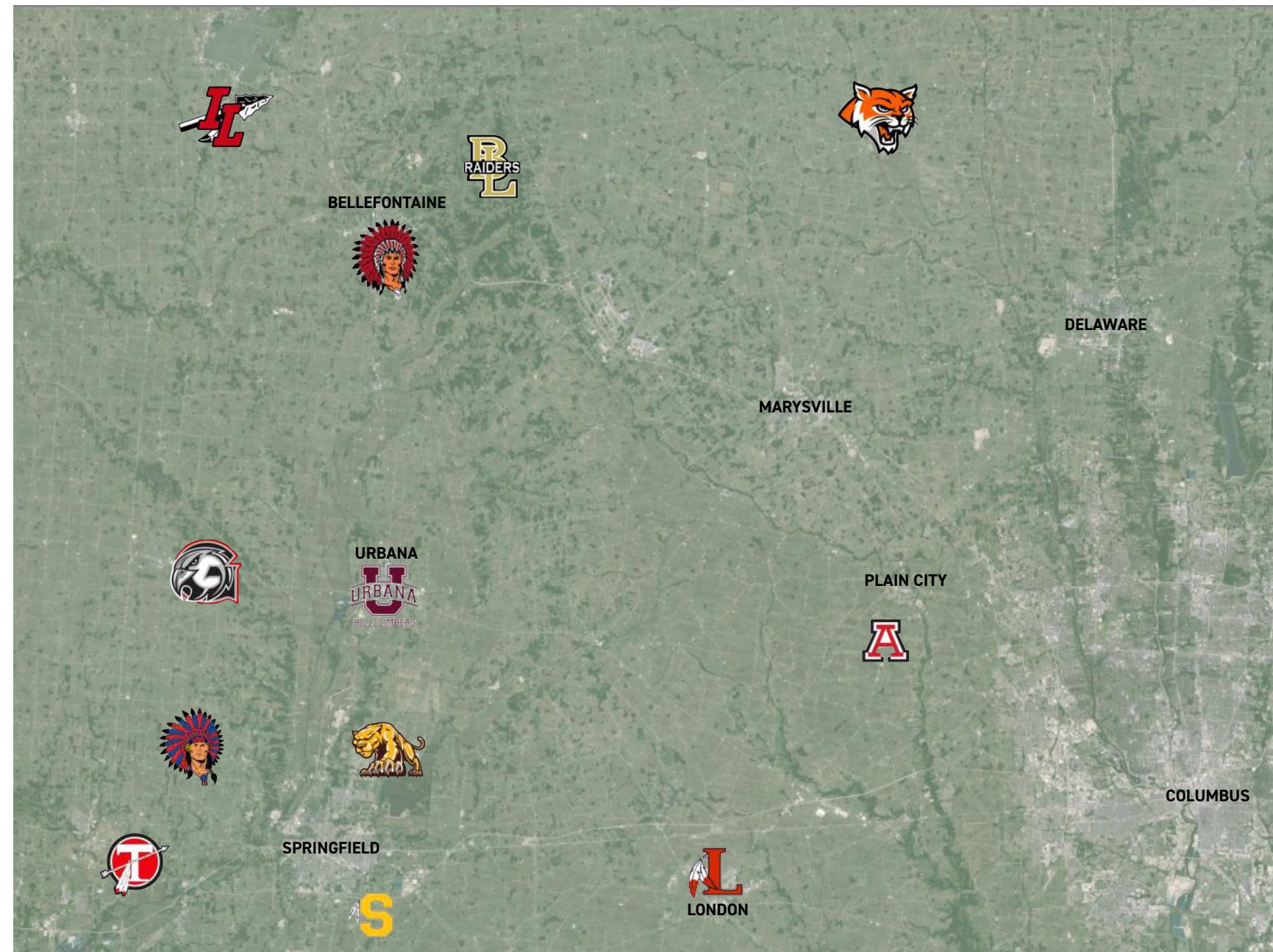


URBANA



# BENCHMARKING

# CENTRAL BUCKEYE CONFERENCE



# BENCHMARKING

- Football
- Soccer
- Track & Field
- Baseball
- Softball
- Training, Locker Room, Support Facilities
- Associated Bleachers, Ticket Booths, Concessions

## Boys

### Fall

- Golf
- Football **Field**
- Soccer **Field**
- Cross *Country*

### Winter

- Basketball **Gym**
- Bowling
- Swimming
- Wrestling **Gym**

### Spring

- Track **Field/Track**
- Baseball **Field**

## Girls

### Fall

- Golf
- Volleyball **Gym**
- Soccer **Field**
- Cross *Country*
- Tennis *Courts*
- Cheer **Gym/Field**

### Winter

- Basketball **Gym**
- Bowling
- Swimming
- Cheer **Gym/Field**

### Spring

- Track **Field/Track**
- Softball **Field**



# BENCHMARKING

## CENTRAL BUCKEYE CONFERENCE

	FOOTBALL		SOCCER		BASEBALL		SOFTBALL	
	Turf	Natural	Turf	Natural	Turf	Natural	Turf	Natural
Bellefontaine	●		●			●		●
Benjamin Logan	●		●			●		●
Graham		●		●		●		●
Indian Lake		●		●		●		●
Jonathan Alder	●		●			●		●
Kenton Ridge		●		●		●		●
London	●		●			●		●
North Union		●		●		●		●
North Western		●		●		●		●
Shawnee		●		●		●		●
Tecumseh		●		●		●		●
Urbana		●		●		●		●

Separate Field ●  
Shared Field ●



# BENCHMARKING

## TURF

### PROS

- Eco-Friendly (real grass fields need between 500,000 to 1,000,000 gallons of water to properly maintain each year).
- Lower maintenance required - less maintenance cost.
- Pesticide free.
- Increased playability - can be used 365 days, 24 hours.
- Versatile, multi-use.
- Turf fields result in fewer injuries (shock pads)

### CONS

- Gets hot.
- Requires sub grade drainage system given it does not absorb water.
- Can be difficult to change lines on field.
- Must plan for replacement.





# BENCHMARKING

## Natural Grass

### PROS

- Natural grass supplies oxygen, filters pollution, and adsorb heat.
- Filter storm water excess and absorbs rainfall.
- Great traction - natural grass offers good traction instead of great traction which means the less chance of injury when playing.
- Easy to change line of field.

### CONS

- Cost - requires continuous sodding, seeding and irrigation system to properly maintain.
- Maintenance includes mowing, edging, aeration, weed control, and watering.

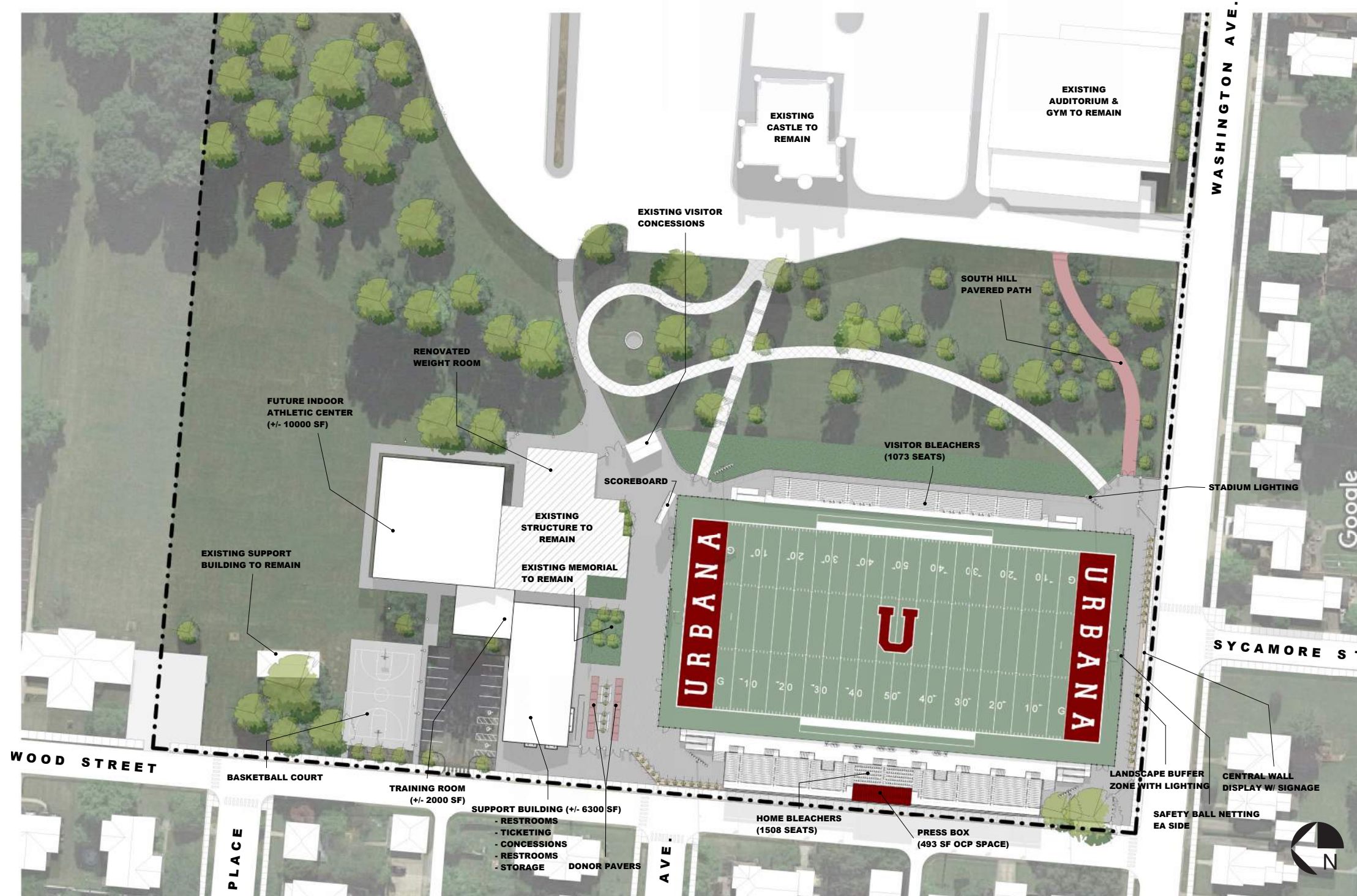




# PROPOSED CONCEPT PLANS



# PROPOSED CONCEPT PLAN



## FEATURES

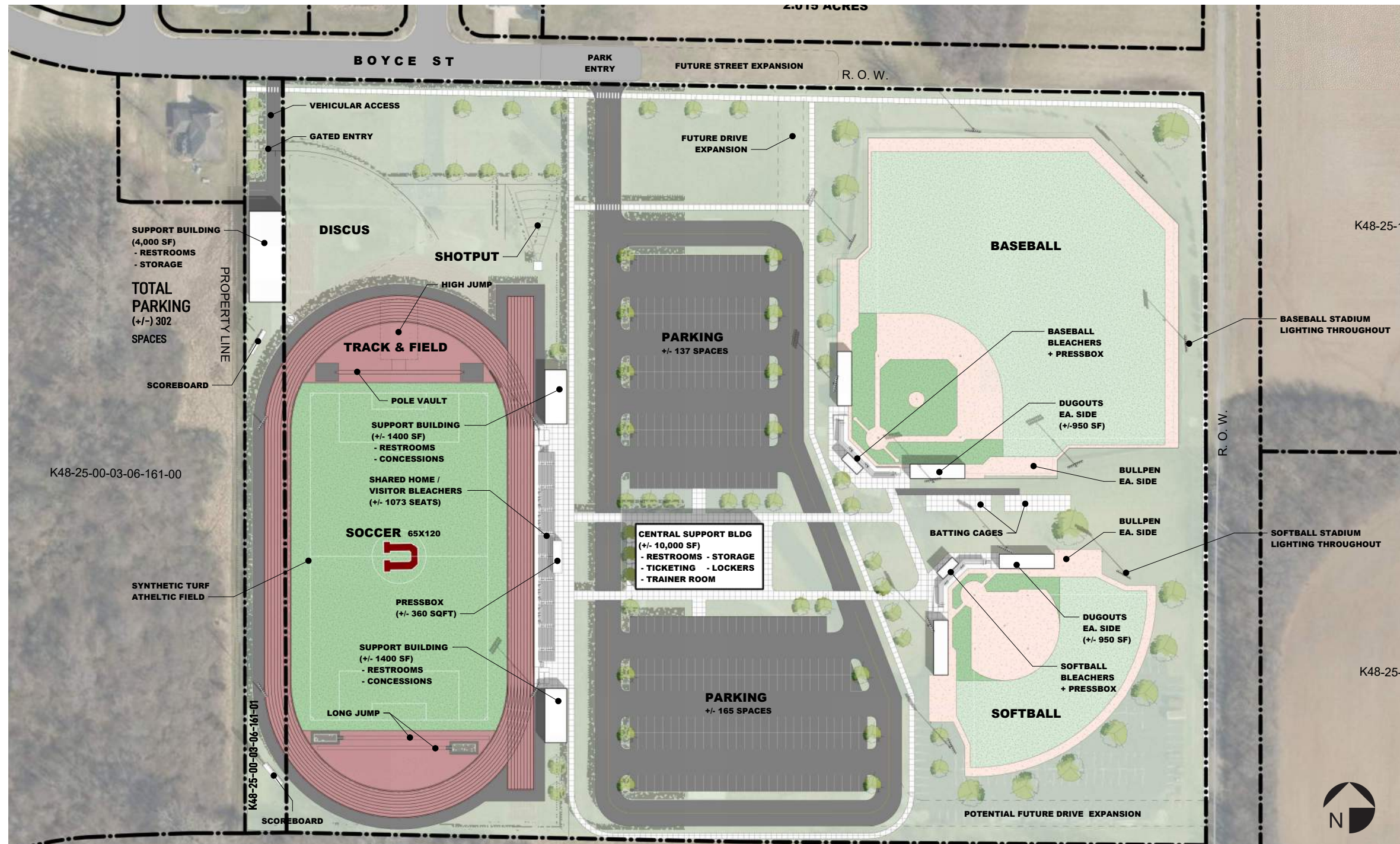
- Synthetic Turf Field
- New Home and Visitor Bleachers
- Expanded Concession
- Indoor Athletics
- New Entrances
- Scoreboard

## Urbana High School





# PROPOSED CONCEPT PLAN



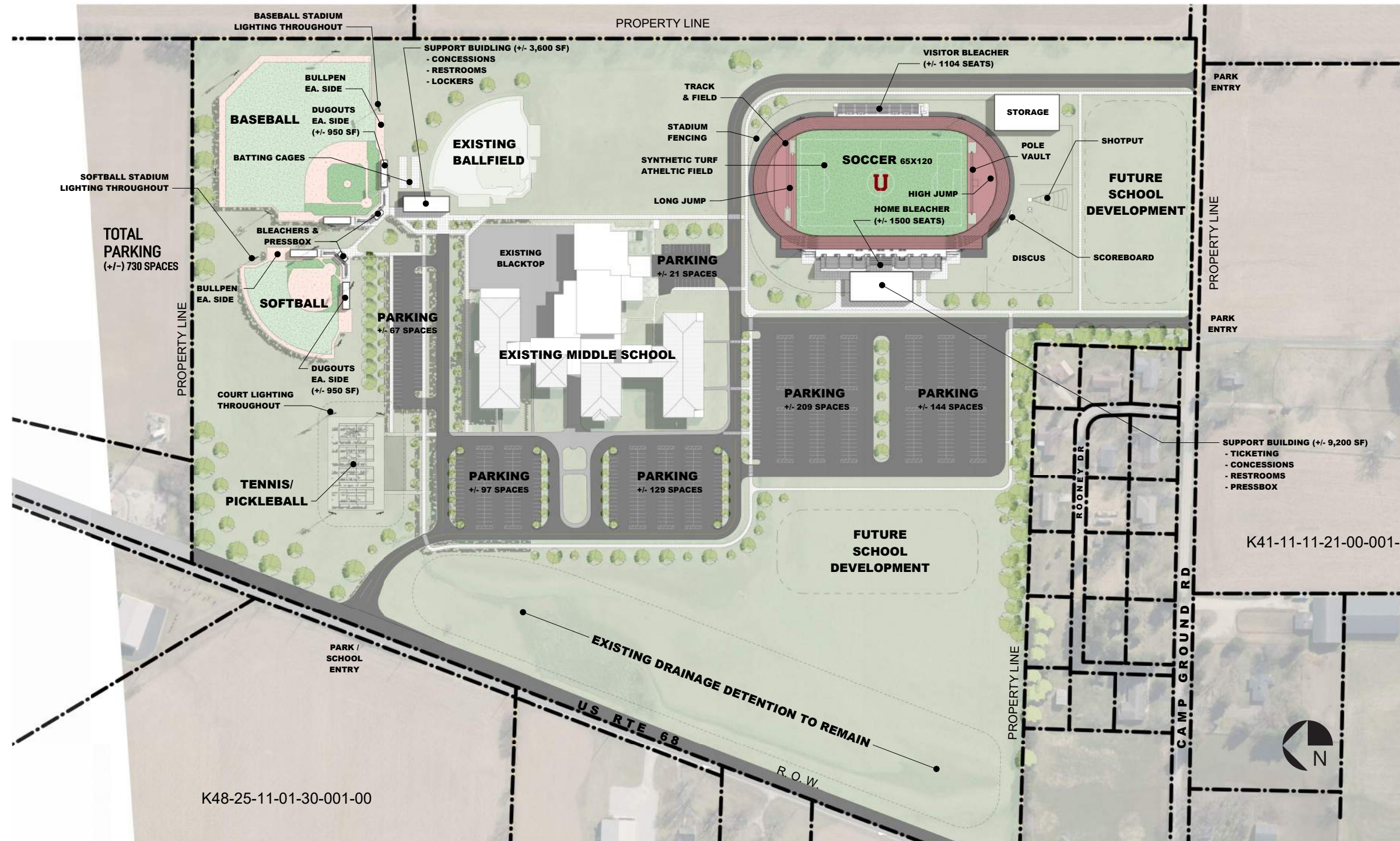
- FEATURES**
- Synthetic Turf Field
  - Track
  - Baseball Field
  - Softball Field
  - New Shared Bleachers
  - Central Support Building
  - Additional Parking
  - Scoreboard

## BOYCE ST ATHLETIC COMPLEX





# PROPOSED CONCEPT PLAN



## FEATURES

- Turf Field
- Track
- Baseball Field
- Softball Field
- Bleachers
- Support Building
- Additional Parking
- Tennis Courts

## K-8 MIDDLE SCHOOL



# THANK YOU

THE FLOOR IS OPEN FOR QUESTIONS  
AND THOUGHTS.

