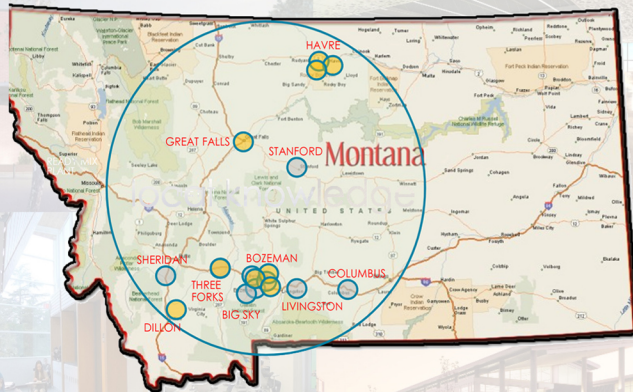


GREAT FALLS HIGH SCHOOL / JANUARY 25, 2018

We are NE45 Architecture

- ✓ Who we are
- ✓ Why we are here
- ✓ What we do
- ✓ How we do it
- ✓ Where we work



- ✓ All about YOU and the STUDENTS



Ron Nemetz
Principal-in-Charge



Ben Erickson
Principal/ Project Manager



Jeff Lusin
Principal



Aaron Overstreet
BIM Coordinator/ Designer



Ali Vasarella
Project Manager



Heather Murray
Architect in Training



Meghan Janousek
Project Coordinator



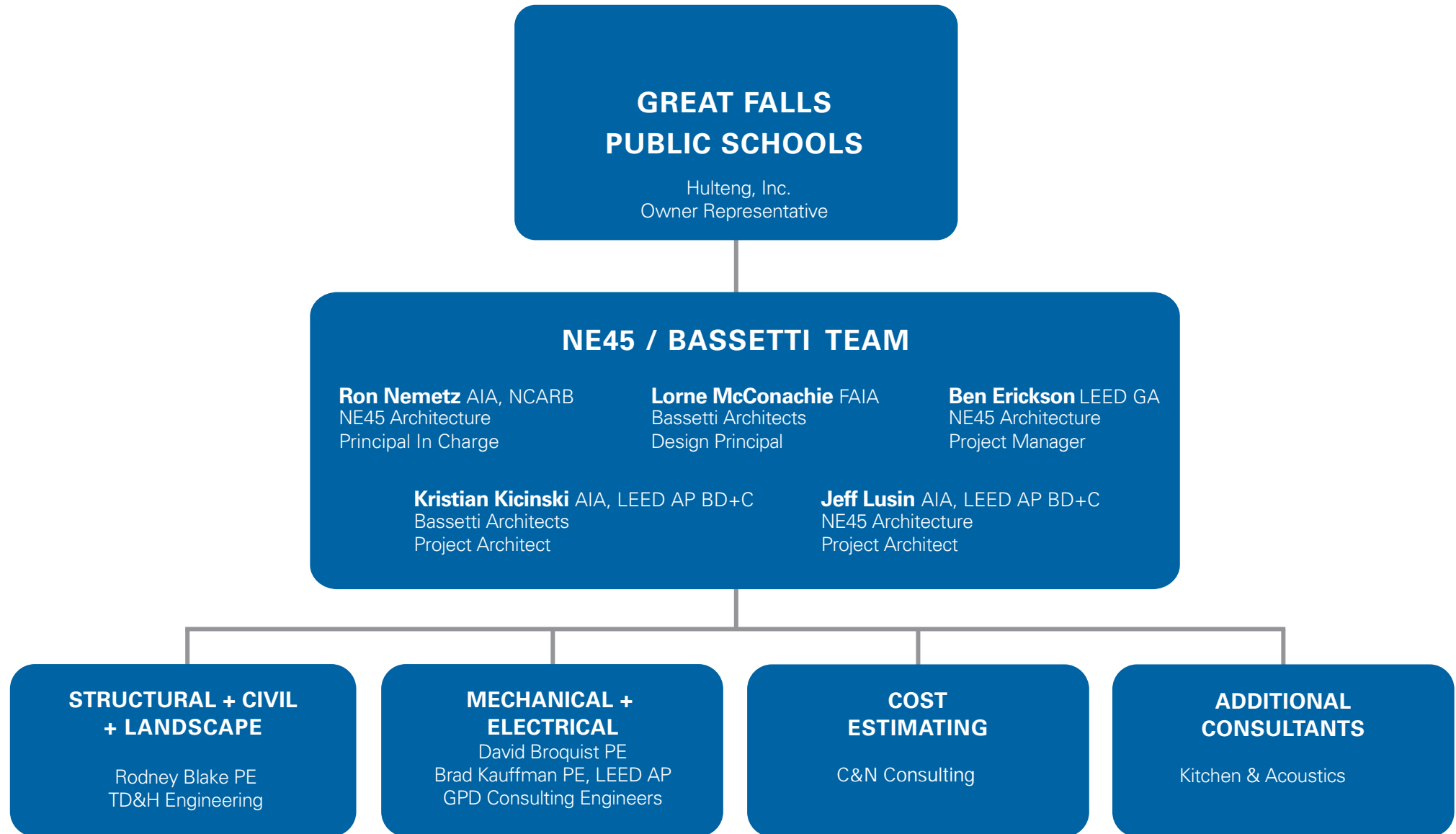
Aryn Phillips
Architect in Training



Tanner Skelton
Project Designer



Team Organization



GREAT FALLS HIGH SCHOOL / PROJECT TEAM



Natrona County High School

JANUARY 25, 2018



GREAT FALLS HIGH SCHOOL / PROJECT SCOPE



- + NEW CONSTRUCTION OF A “HUB” AREA:
 - EXPANDED CLASSROOMS FOR CTE, SCIENCE, TECHNOLOGY, ENGINEERING, AND MATH
 - MODERN LUNCH/DINING FACILITY
 - ACCESS BETWEEN MAIN CAMPUS, FIELDHOUSE AND SOUTH CAMPUS
- + RESPECT HISTORIC INTEGRITY OF GREAT FALLS HIGH SCHOOL
- + NEW HEATING AND VENTILATION SYSTEM
- + REPLACE ELECTRICAL RECEPTACLES, CIRCUITS AND BREAKERS
- + REPLACE PIPES, SINKS AND OTHER FIXTURES
- + PROVIDE SUPPORT TO REPLACE EXISTING WINDOWS
- + REMODEL CLASSROOMS:
 - INCLUDING MECHANICAL, ELECTRICAL, PLUMBING AND TECHNOLOGY UPGRADES
- + DEVELOP NEW PARKING AREAS
- + UPGRADE TECHNOLOGICAL INFRASTRUCTURE
- + INSTALL ACCESSIBLE AND VERSATILE WIRELESS THROUGHOUT FOR STUDENT, FACULTY AND VISITORS

JANUARY 25, 2018

GREAT FALLS HIGH SCHOOL / SCHEDULE

ACTIVITIES	2017			2018												2019												2020												
	O	N	D	J	F	M	A	M	J	J	A	S	O	N	D	J	F	M	A	M	J	J	A	S	O	N	D	J	F	M	A	M	J	J	A					
PRE-DESIGN / PROGRAMMING	■																																							
SCHEMATIC & DESIGN DEVELOPMENT				■																																				
PERMITTING & HISTORIC PRESERVATION REVIEW							■																																	
CONSTRUCTION DOCUMENTS							■																																	
CONSTRUCTION							UTILITY		HUB CONSTRUCTION										MEP UPGRADES & WINDOWS																					



HEALTHY, SAFE & SECURE

All students and staff learn and work best in a safe, secure, and nurturing environment.



PERSONALIZED

All students learn when their individual needs are met through a personalized school experience.



LEARNER CENTERED

All students deserve teachers and staff who thrive on student success. Each student will have fair and equitable opportunity for quality instruction and academic success.



COMMUNITY PRIDE

Quality education is a partnership of students, staff, family, and community engagement. Dedication to acknowledging, affirming, and including diversity enriches the educational experiences for all.



TECHNOLOGY

District resources, programs and staff are flexible, adaptable and provide choice to meet the changing needs of all students.



STEWARDSHIP

District resources and staff are public assets requiring responsible stewardship and community involvement.

GUIDING PRINCIPLES

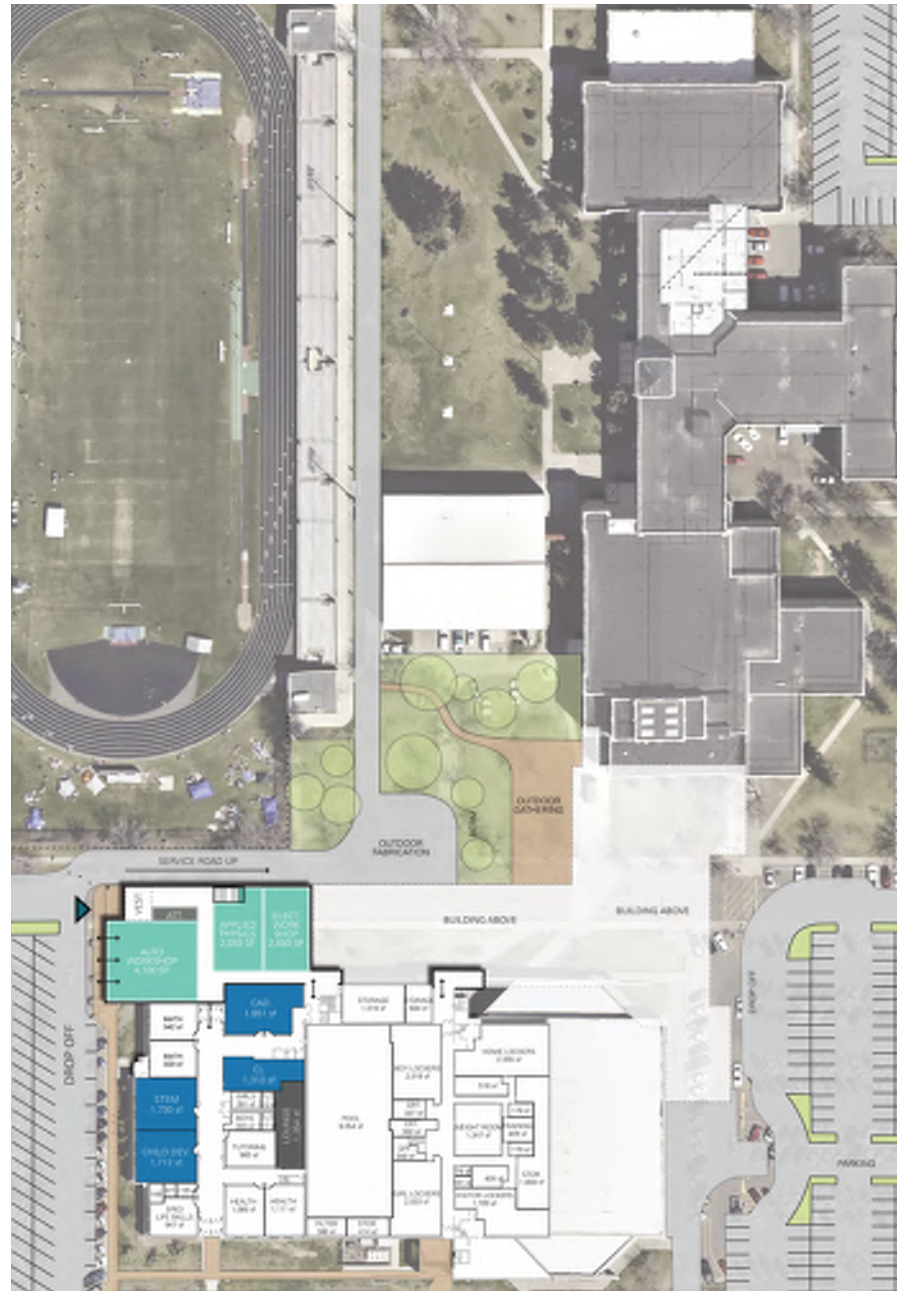
GREAT FALLS HIGH SCHOOL December 11, 2017

GREAT FALLS HIGH SCHOOL / SITE PLAN - EXISTING CONDITIONS



JANUARY 25, 2018

GREAT FALLS HIGH SCHOOL / HUB DIAGRAMS



LOWER LEVEL - OVERALL



A perspective view of a long, brightly lit corridor. On the left, there are large, multi-paned windows that look out onto a green landscape. On the right, there is a glass wall or a series of glass doors, reflecting the interior. Two figures are walking away from the camera down the center of the corridor. The floor is a light, neutral color. The ceiling is white and appears to have recessed lighting. The overall atmosphere is clean, modern, and bright.

STAIRS UP TO SHOPS AND GYM LEVEL

OUTDOOR FABRICATION

BERM

OUTDOOR GATHERING

SERVICE ROAD UP

BUILDING ABOVE

BUILDING ABOVE

DROP OFF

OFF. 382 sf

BEASTRO 1,709 sf

OFFICE AREA CONVERTED TO CLASSROOM

BEASTRO CONVERTED TO CLASSROOMS



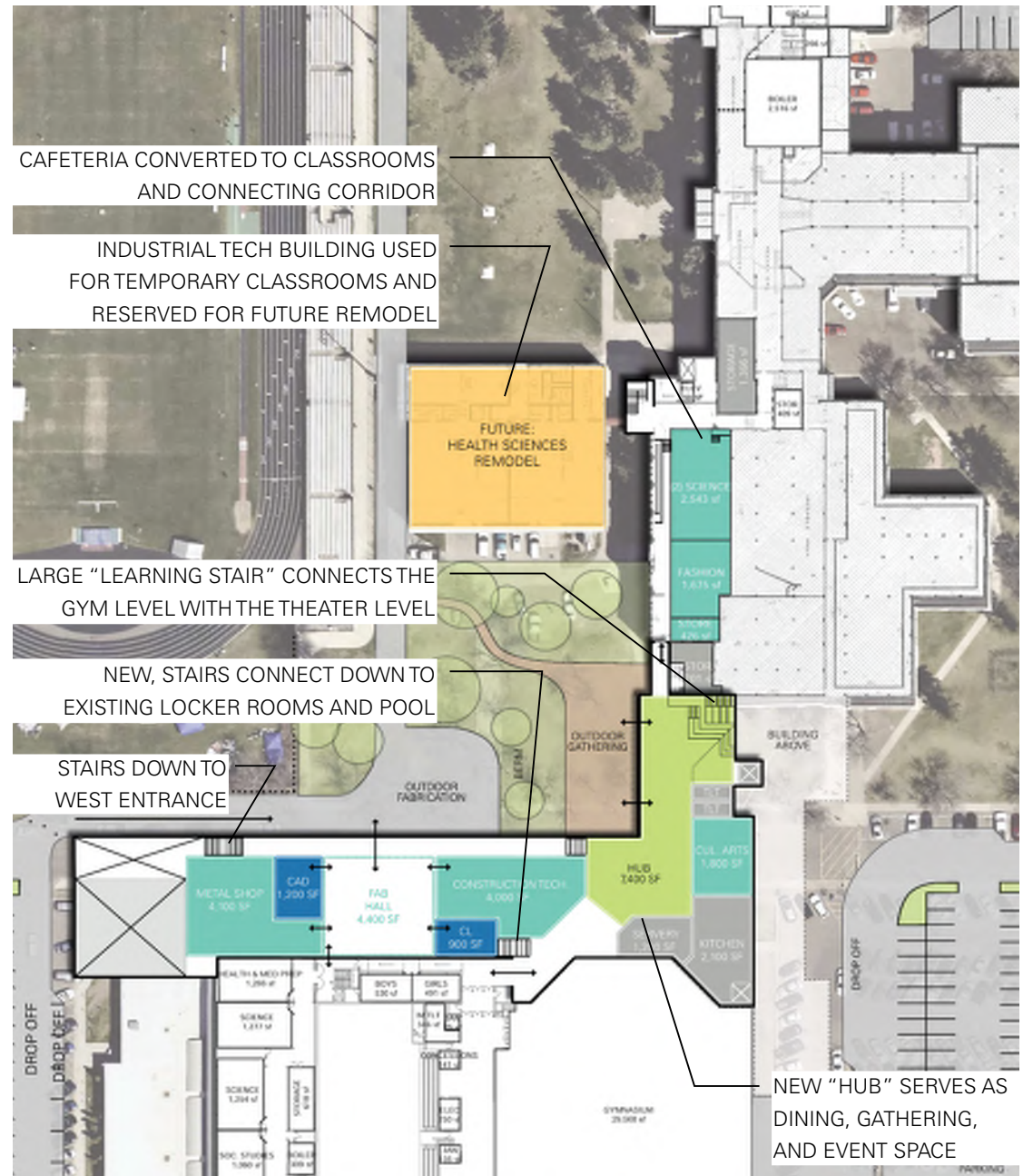
GREAT FALLS HIGH SCHOOL / HUB DIAGRAM



FABRICATION HALL - MAIN LEVEL



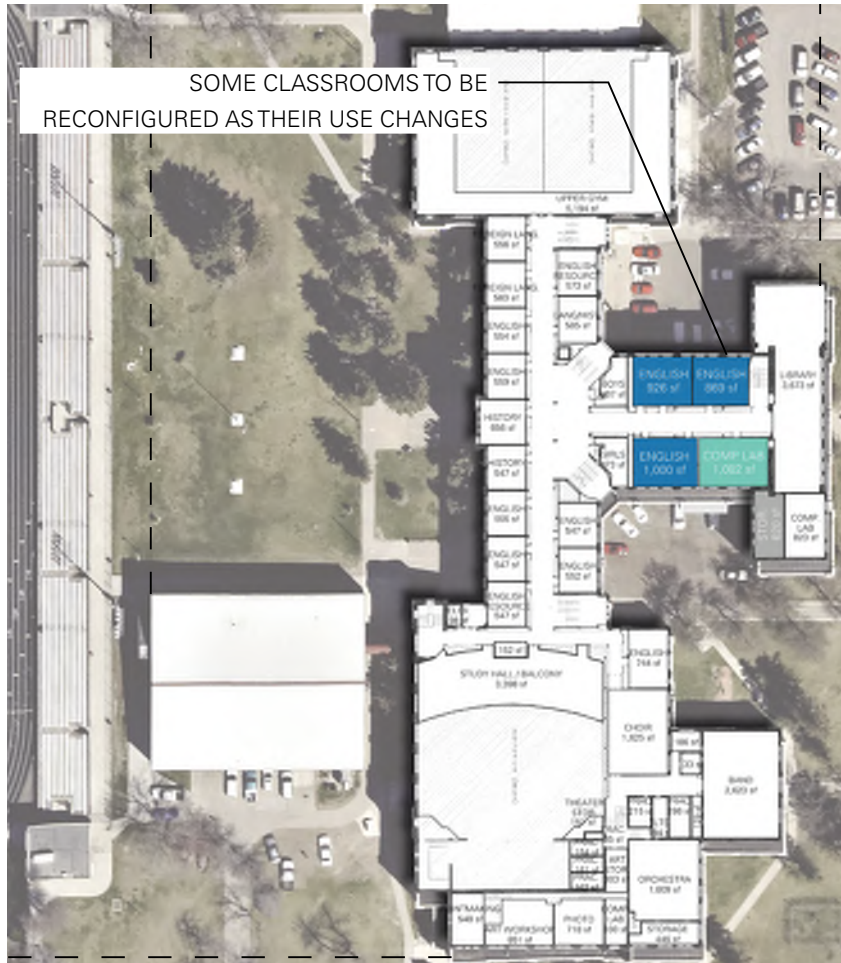
HUB - LOOKING NORTH AT THE LEARNING STAIR



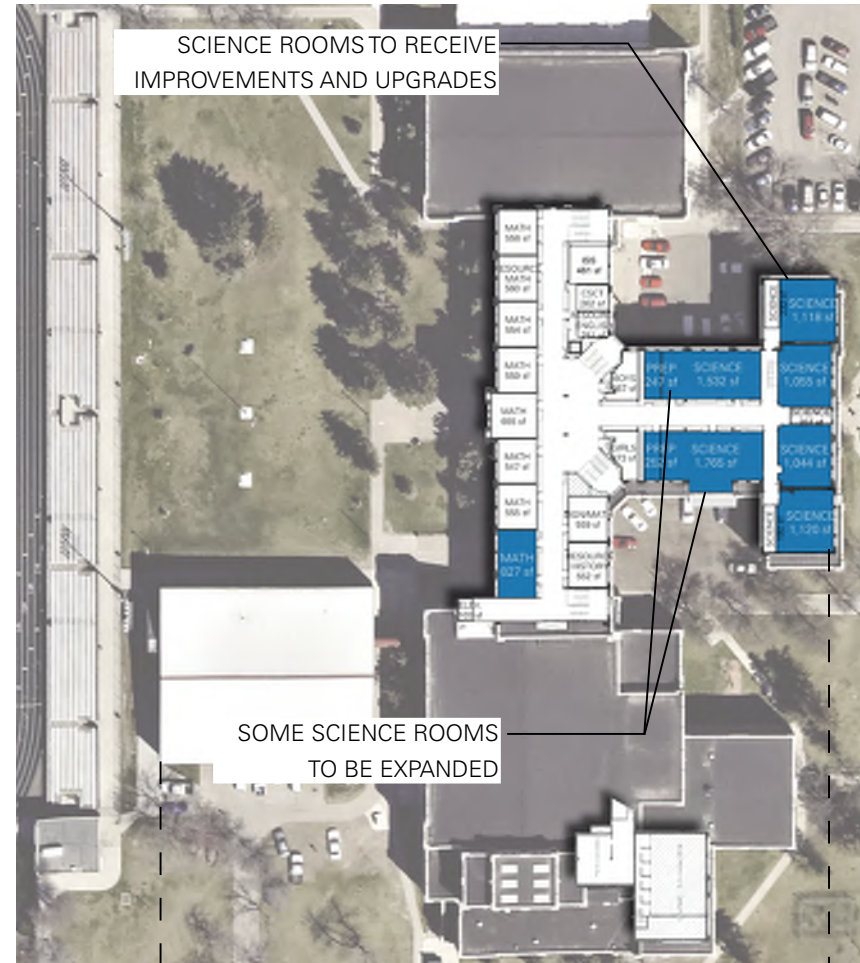
GROUND LEVEL

[illegible]

GREAT FALLS HIGH SCHOOL / HUB DIAGRAMS



SECOND LEVEL



THIRD LEVEL

GREAT FALLS HIGH SCHOOL



JANUARY 25, 2018



GREAT FALLS HIGH SCHOOL



JANUARY 25, 2018



GREAT FALLS HIGH SCHOOL



JANUARY 25, 2018

GREAT FALLS HIGH SCHOOL / PRELIMINARY STUDIES



EAST ENTRANCE A NEW MAIN ENTRY WILL BE LOCATED OFF THE CORNER OF 4TH AVE S, AND 20TH ST S.



WEST ENTRANCE A NEW WEST ENTRANCE WILL PROVIDE ACCESS FOR STUDENTS WHO PARK, AND ARE DROPPED OFF NEAR 4TH AVE S, AND 18TH ST S.



HUB EXTERIOR THE MAIN HUB WILL HAVE LARGE WINDOWS OPENING TOWARDS THE WEST.

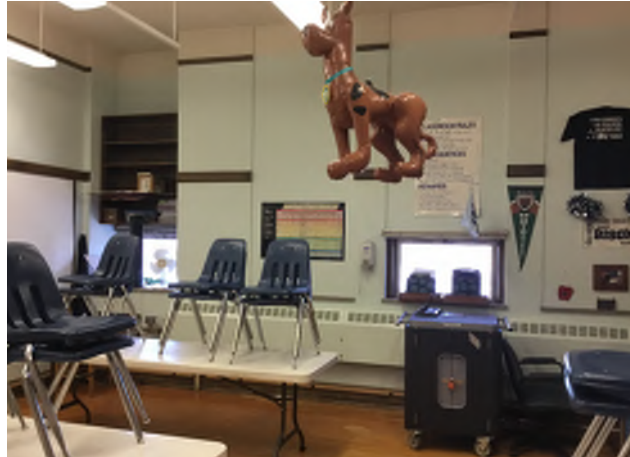


JANUARY 25, 2018

GREAT FALLS HIGH SCHOOL / EXISTING WINDOW REPLACEMENT

THE 2016 FACILITY BOND MEASURE INCLUDED FUNDS FOR THE REPLACEMENT OF WINDOWS THROUGHOUT THE MAIN BUILDING. THE ORIGINAL WINDOWS WERE REPLACED IN 1965 WITH ALUMINUM, AND FIBERGLASS PANELS. MANY WINDOWS HAVE SINCE BEEN WALLED UP ON THE INTERIOR. REPLACEMENT OF THESE WINDOWS WILL BRING DAYLIGHT, AND HISTORIC CHARACTER BACK TO A MAJORITY OF CLASSROOMS WITHIN THE MAIN BUILDING.

A FEW WINDOWS HAVE ALREADY BEEN REPLACED, SUCH AS THE WINDOWS WITHIN THE LIBRARY.



MANY WINDOWS AND FIBERGLASS PANELS HAVE BEEN WALLED UP ON THE INTERIOR.



REPLACEMENT WINDOWS AT THE LIBRARY BRING DAYLIGHT INTO THE ROOM WHILE ALLOWING VIEWS TO THE OUTDOORS.



THE ORIGINAL WINDOWS WERE REPLACED IN 1965 WITH ALUMINUM FRAMES AND FIBERGLASS PANELS.



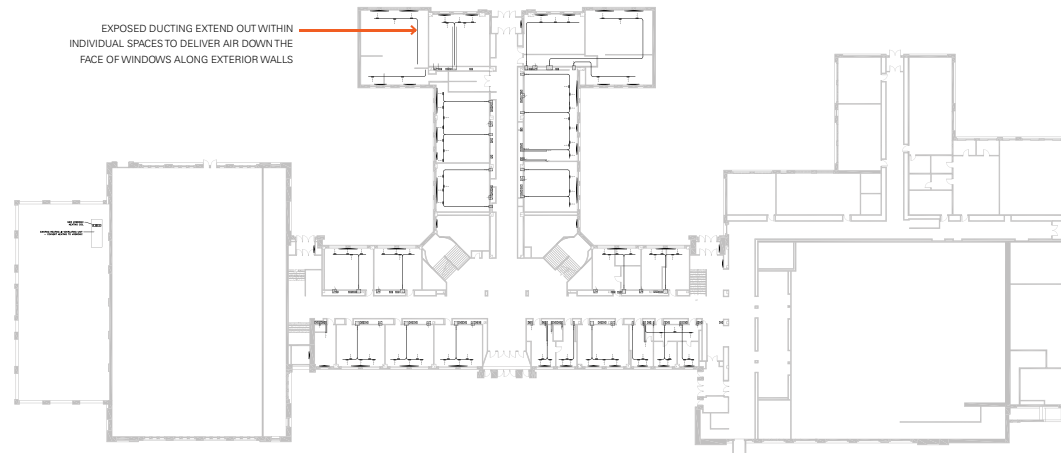
RECENTLY REPLACED WINDOWS AT THE LIBRARY BRING BACK HISTORIC CHARACTER TO THE MAIN BUILDING.

JANUARY 25, 2018

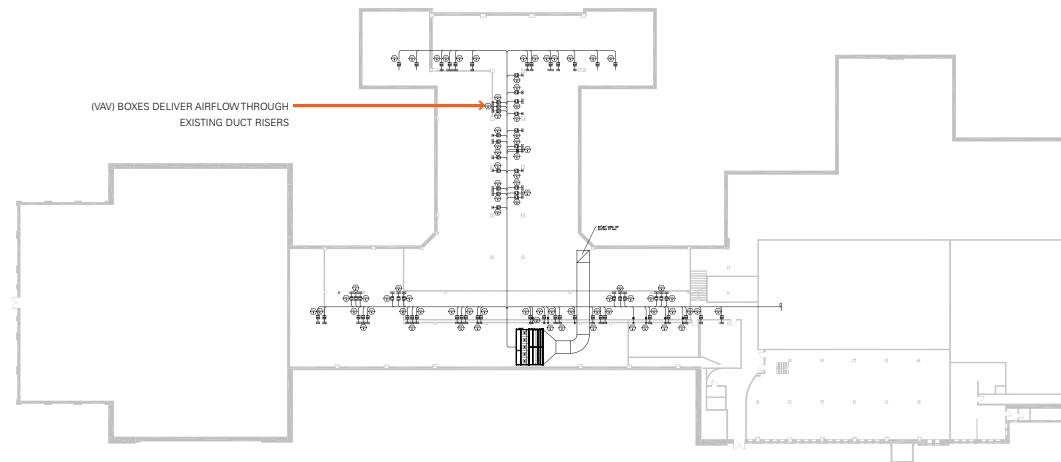


GREAT FALLS HIGH SCHOOL / MAIN BUILDING MEP DIAGRAMS

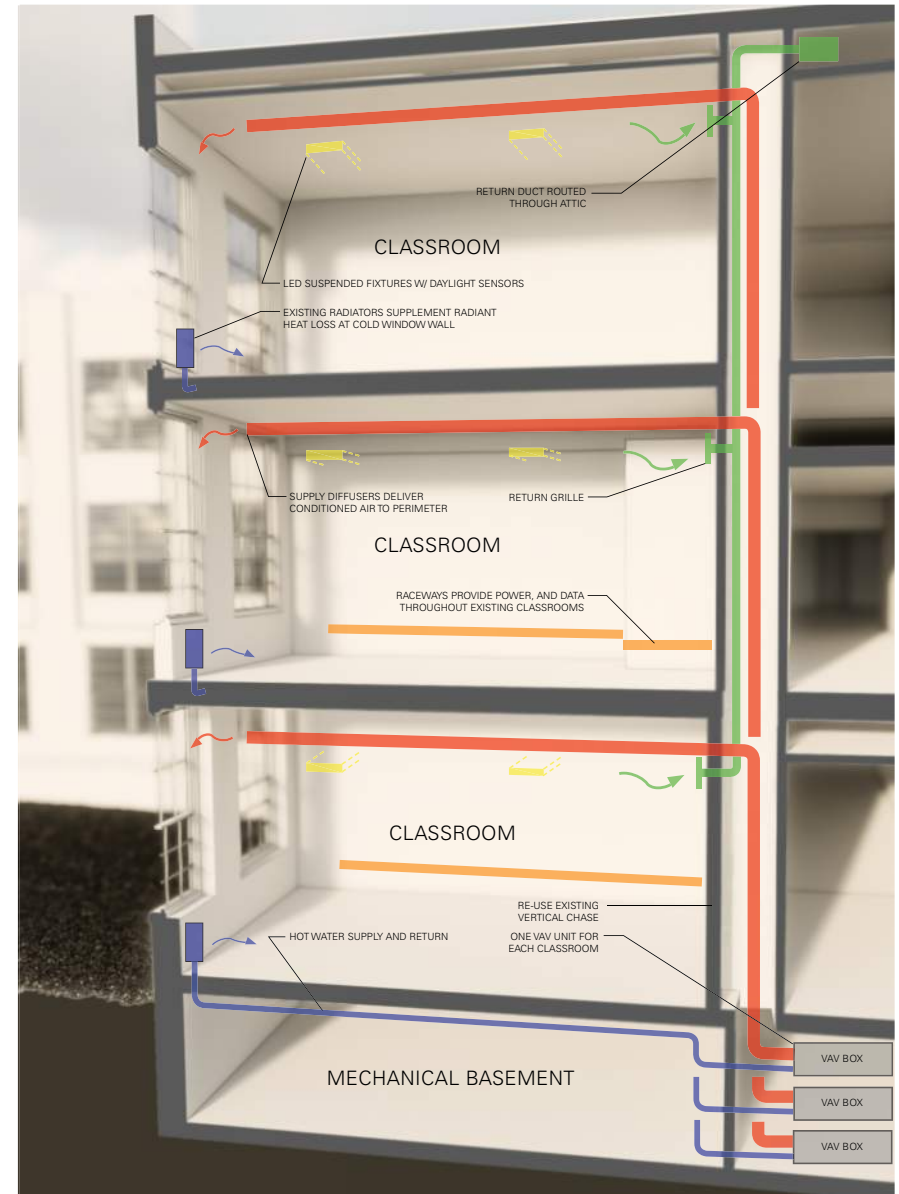
- + A SINGLE AIR HANDLING UNIT WITH MULTIPLE VARIABLE AIR VOLUME BOXES (VAV) LOCATED IN THE BASEMENT WILL DELIVER AIRFLOW THROUGHOUT THE EXISTING DUCT RISERS.
- + AIR DISTRIBUTION WITHIN INDIVIDUAL ROOMS WILL BE DISTRIBUTED BY NEW EXPOSED DUCTING.
- + A BUILDING-WIDE DIRECT DIGITAL CONTROL (DDC) SYSTEM WILL BE PROVIDED TO MONITOR ALL HVAC EQUIPMENT.
- + FRESH-AIR INTAKE, LOCATED AT THE ROOF LEVEL, WILL BE RE-USED TO SERVE THE NEW AIR HANDLING SYSTEM.
- + PROVIDE NEW UTILITY ELECTRICAL SERVICE, WITH PANEL BOARDS THROUGHOUT THE FACILITY.
- + HISTORIC HALLWAY LIGHTING WILL BE RETROFITTED WITH LED'S WHEREVER POSSIBLE.
- + CLASSROOM LIGHTING WILL FEATURE OCCUPANCY SENSORS, DAYLIGHT SENSORS, AND FULL RANGE DIMMING CAPABILITIES.



FIRST LEVEL - MECHANICAL PLAN



BASEMENT LEVEL - MECHANICAL PLAN



MAIN BUILDING AXONOMIC

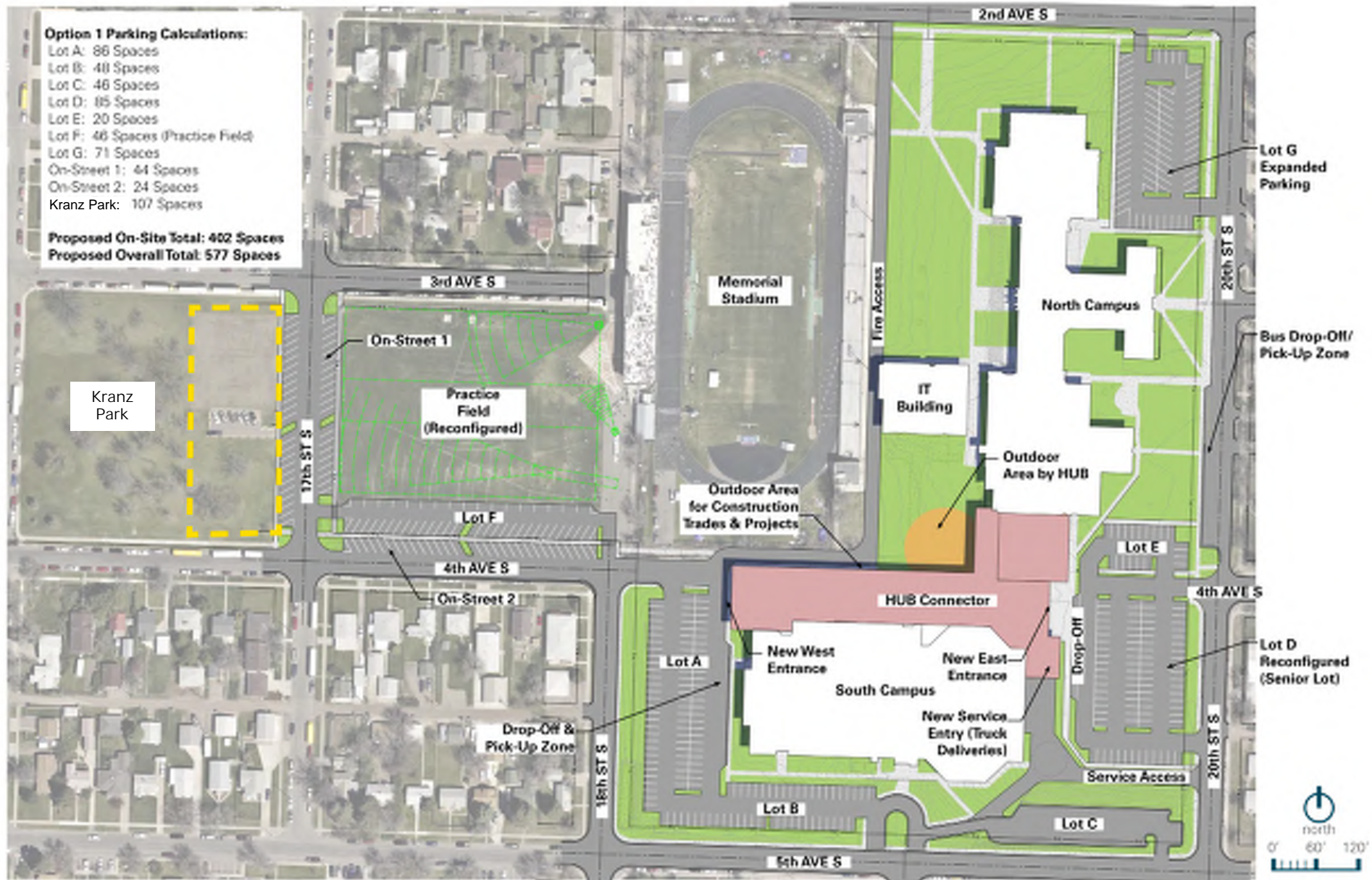
JANUARY 25, 2018

GREAT FALLS HIGH SCHOOL / SITE PLAN - EXISTING CONDITIONS

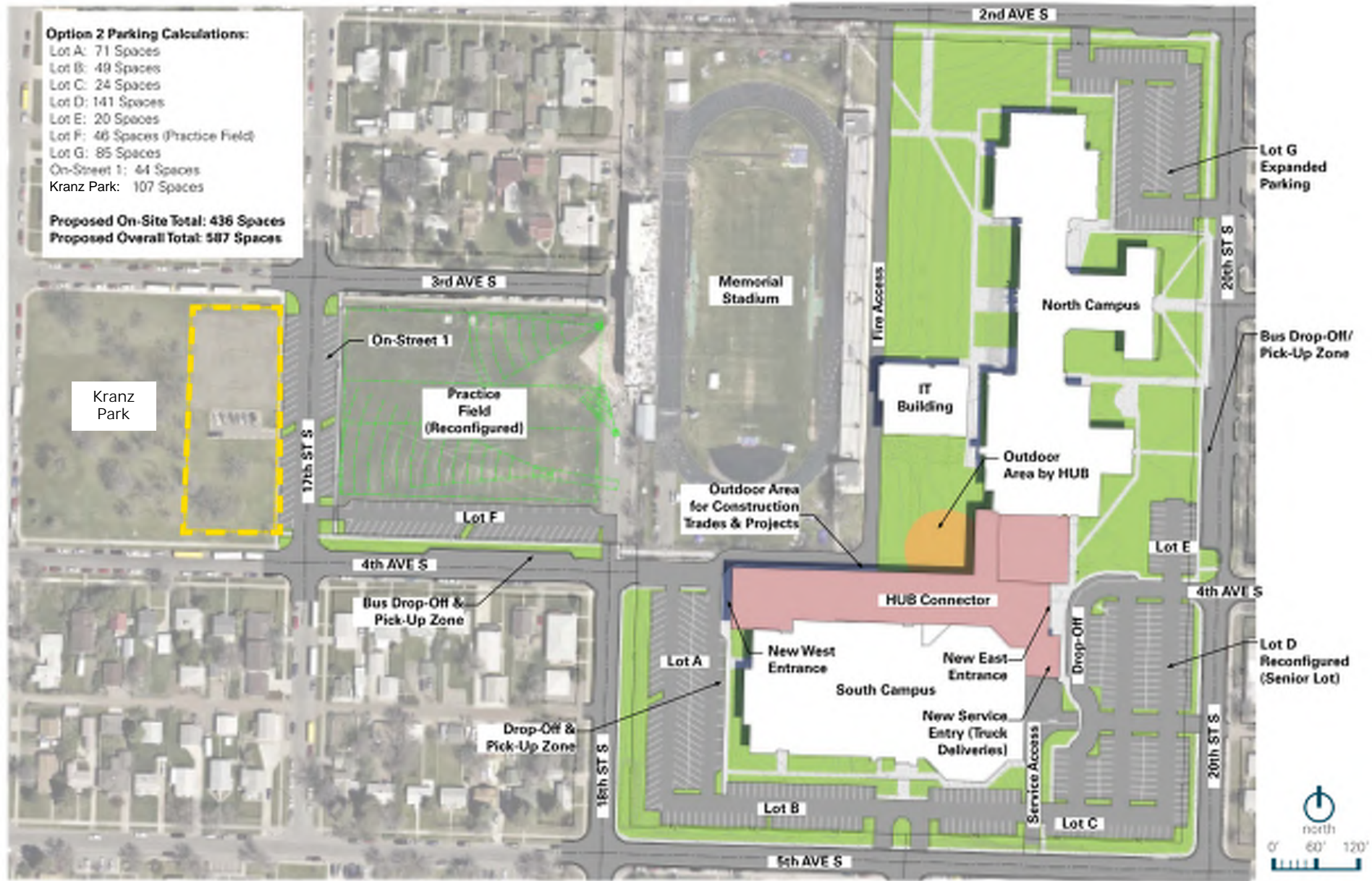


JANUARY 25, 2018

GREAT FALLS HIGH SCHOOL / PRELIMINARY CAMPUS PLAN - OPTION 1



GREAT FALLS HIGH SCHOOL / PRELIMINARY CAMPUS PLAN - OPTION 2



THANK YOU.