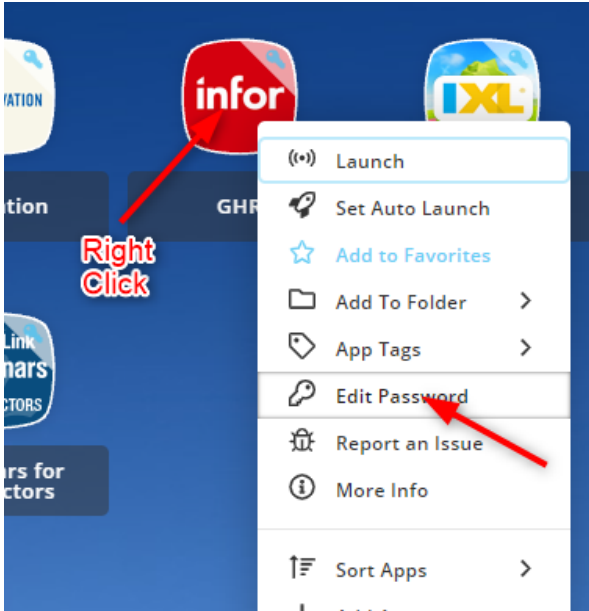


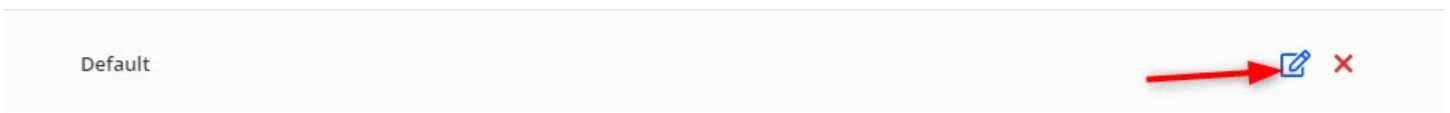
Updating GHR Password in Classlink

When you update your GHR password, it is not automatically updated in Classlink. Anytime you update your GHR password you will need to follow the steps below to also update the password in Classlink.

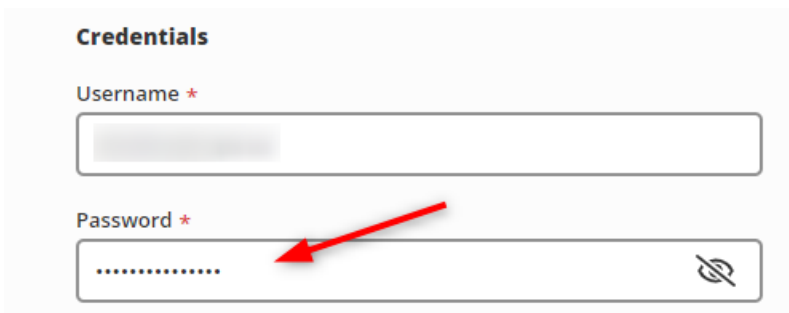
On your Classlink dashboard right click the infor GHR icon and choose Edit Password.



On the Default line click on the Edit icon.



In the Credentials section type the new password in the Password box.

A screenshot of the 'Credentials' section in Classlink. It contains two input fields: 'Username *' and 'Password *'. The 'Password *' field is filled with dots and has a red arrow pointing to it. There is a small icon on the right side of the password field.

Click the green Save button at the bottom and your new password is saved in Classlink.

