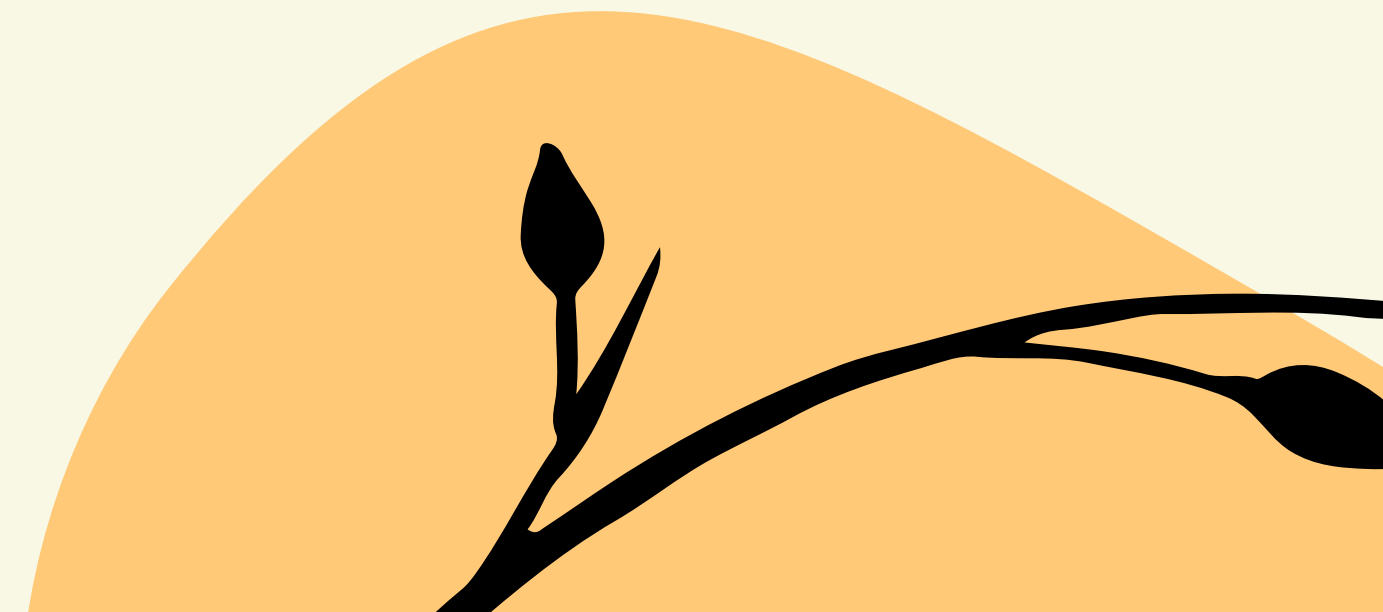
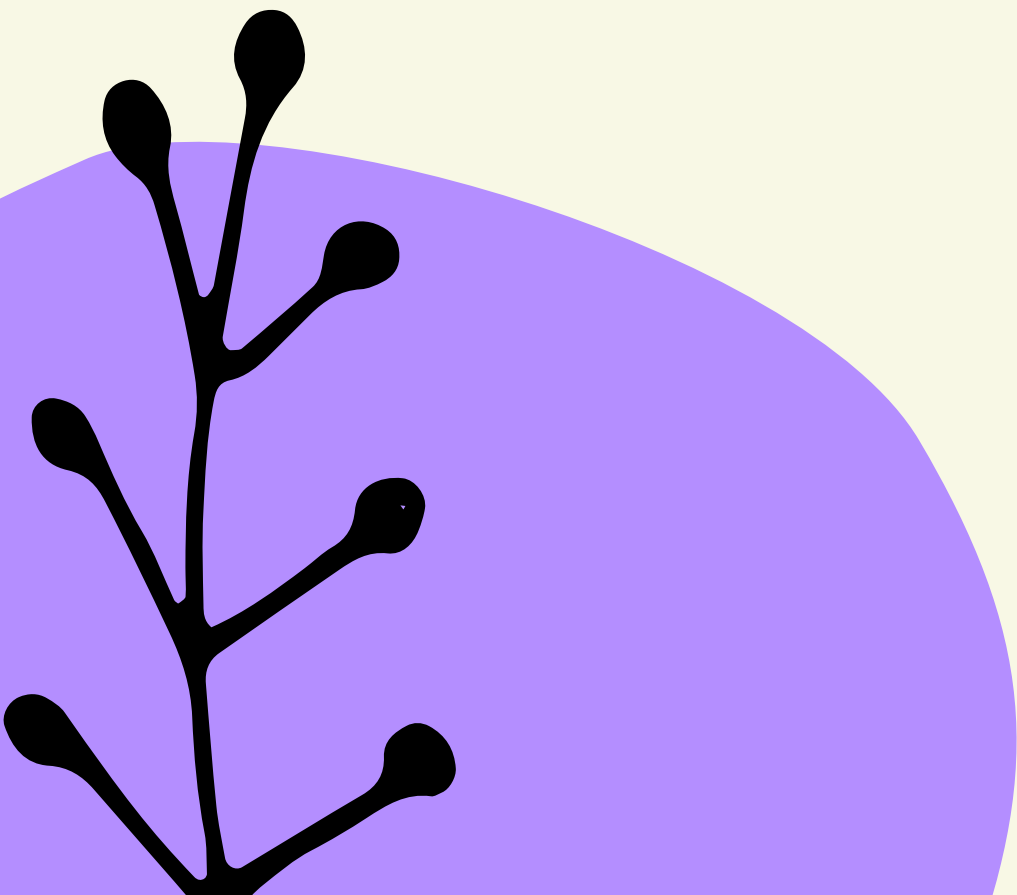


# Middle School SEL Adoption Committee Meeting

April 18, 2024



# Guess the data source game!

Did the comment come from student, staff or family survey?

*It was very calming and relaxing with not too much work and was fun as well.*

*-student*

*I liked the way that [curriculum] organized their curriculum.*

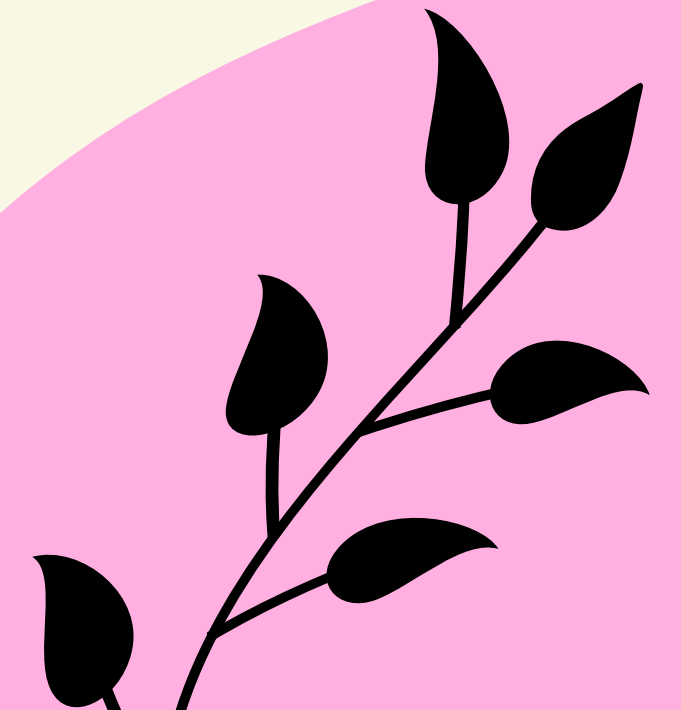
*-student*

*I like how [curriculum] was interactive and engaging.*

*-student*

*What I like best about this curriculum is that it encourages people to engage in learning by sharing their thoughts and experiences, for example.*

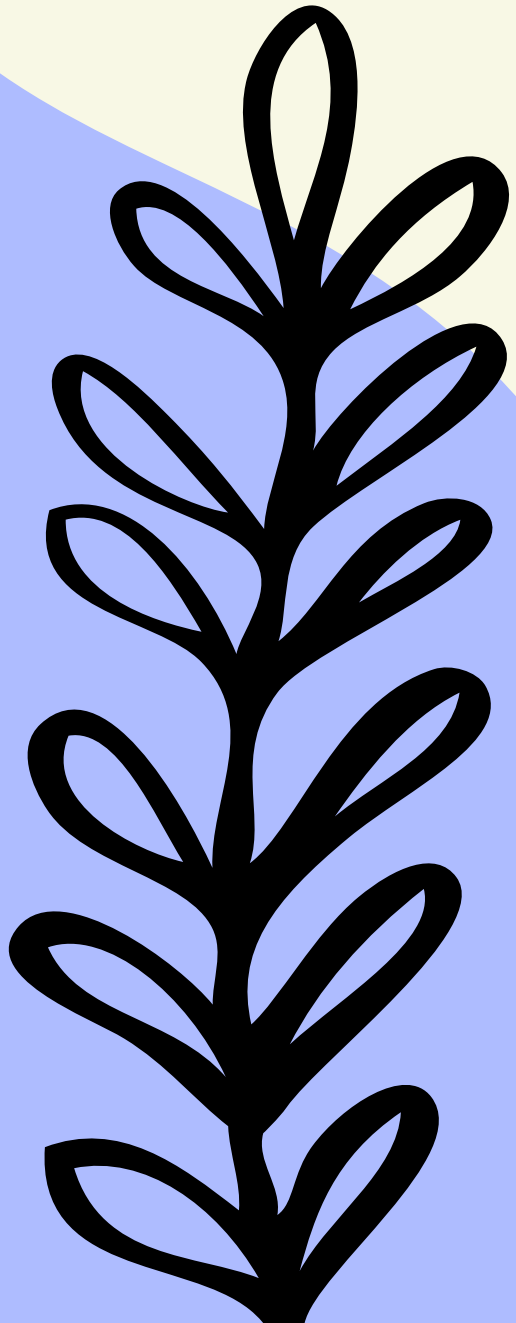
*-student*



# Agenda

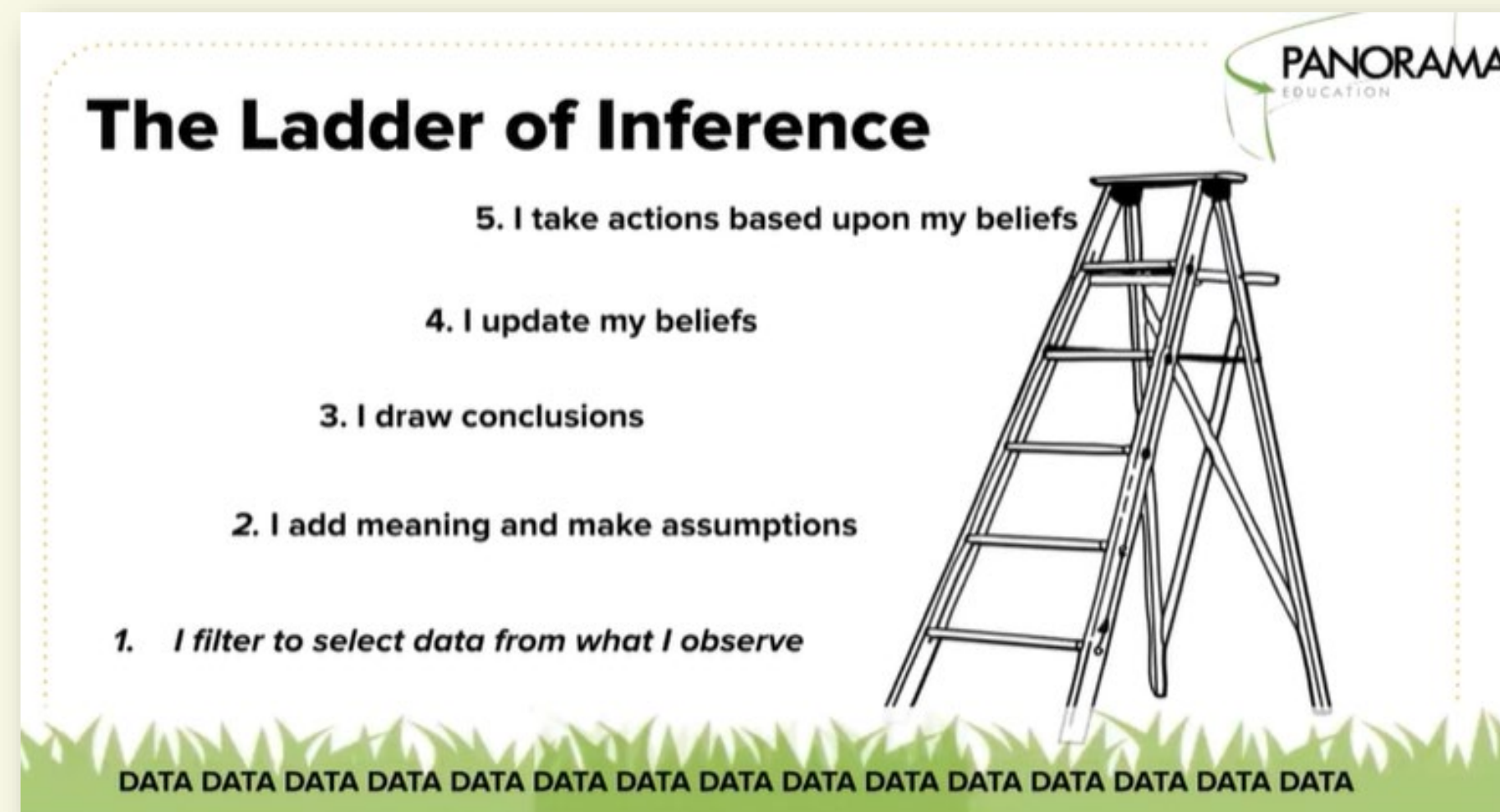
- Welcome
- Pilot Data Review
- Discussion
- Next Steps
- Closing

Ask: notetakers?



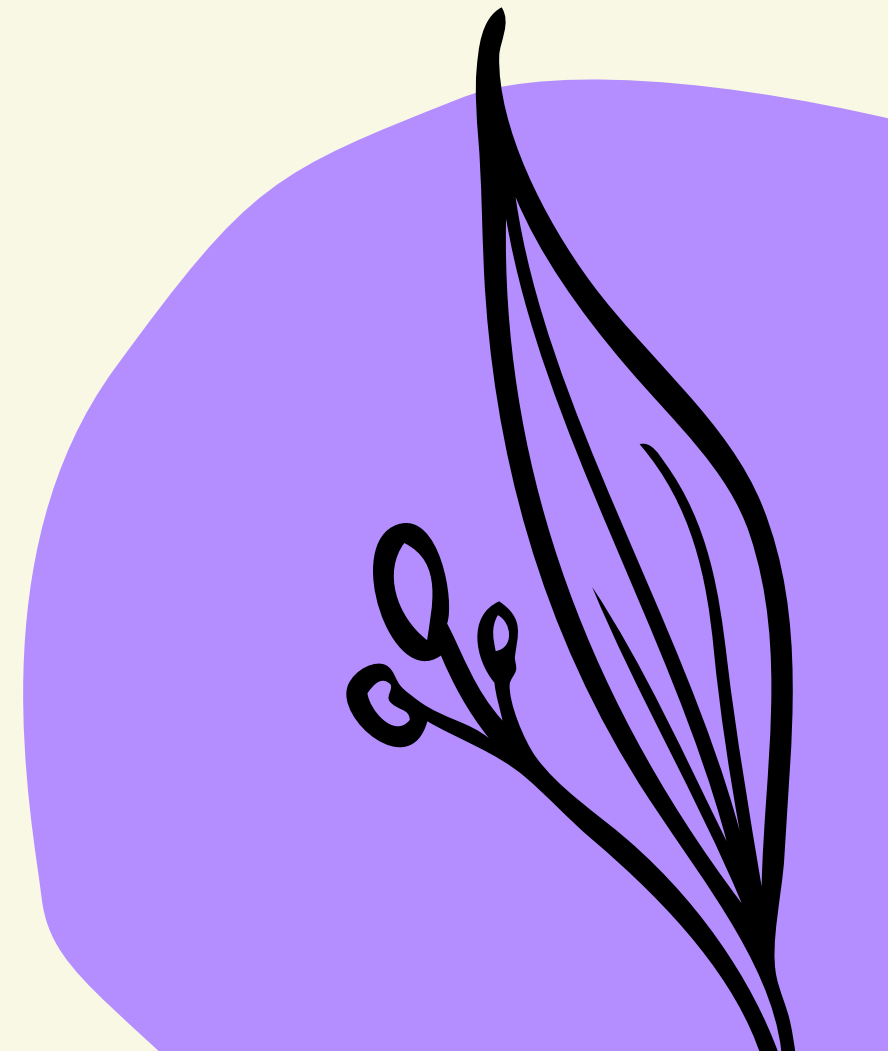
# Ladder of Inference

## The Ladder of Inference Video by Panorama



# Critical Criteria Considerations

- How does this program benefit and harm each group? How will we mitigate the risks?
  - Students
  - Families
  - Educators & Staff
  - System

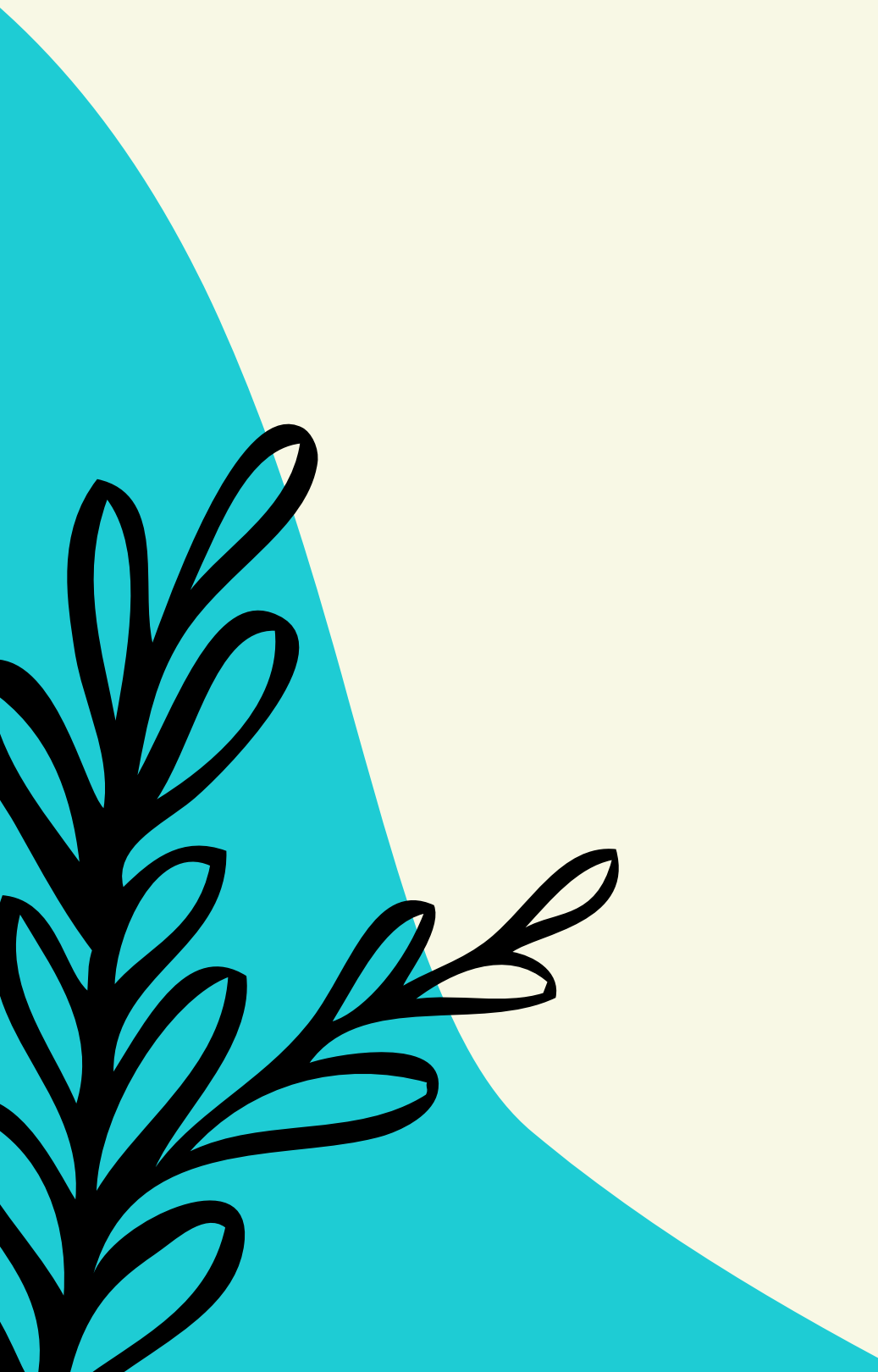


# Critical Criteria

- Consider student well-being and equitable learning opportunities and experiences.
- Consider the history and current realities of those students farthest from educational justice. Consider students of color, multilingual learners, students with disabilities, students in advanced learning, students receiving free/reduced lunch, students identifying as LGBTQ+, etc..
- Consider how this supports, elevates, and centers the needs of students farthest from educational justice.
- Consider how this promotes opportunities and access for those who have been historically excluded. How does this benefit all students equitably?



# Data Review



p. 1

**Middle School SEL Adoption Feedback Data, April 2024**  
4/11/2024

---

### Contents

Data Sources.....	1
Student Feedback Results.....	2
Charts.....	2
Student Demographics.....	3
Themes.....	4
CharacterStrong.....	4
Second Step.....	5
Pilot Educator Feedback Results.....	7
Charts.....	7
Pilot Educator Demographics.....	9
Themes.....	10
CharacterStrong.....	10
Second Step.....	11
Staff (non-pilot educators) Feedback Results.....	12
Charts.....	12
Staff Demographics.....	13
Themes.....	13
Family Feedback Results.....	14
Charts.....	14
Themes.....	15

### Data Sources

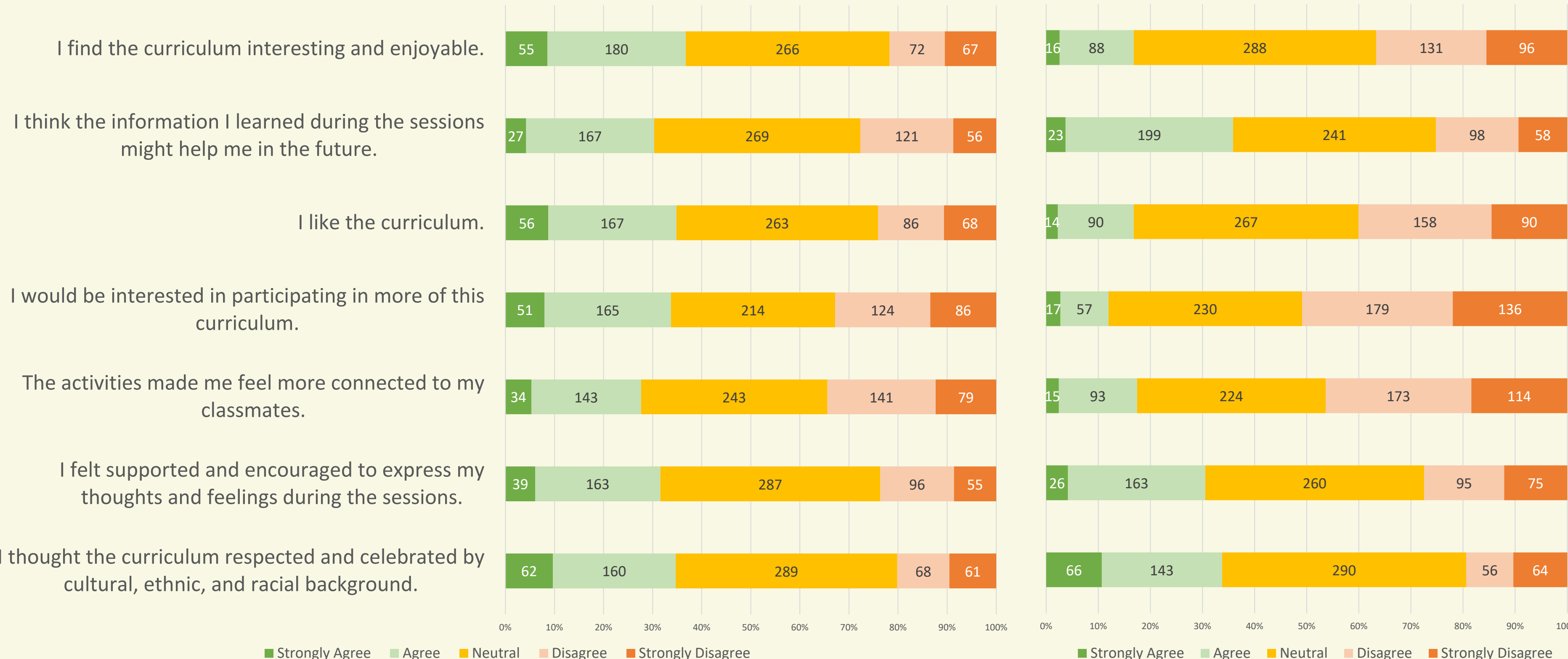
- Student SEL Pilot Survey – CharacterStrong: 640 responses
- Student SEL Pilot Survey – Second Step: 619 responses
- Teacher SEL Pilot Survey – CharacterStrong: 11 responses
- Teacher SEL Pilot Survey – Second Step: 9 responses
- Staff (non-pilot teachers) SEL Curriculum Survey: 12 responses
- Family SEL Curriculum Survey: 23 responses



# Student Feedback

CharacterStrong (n=640)

Second Step (n=619)

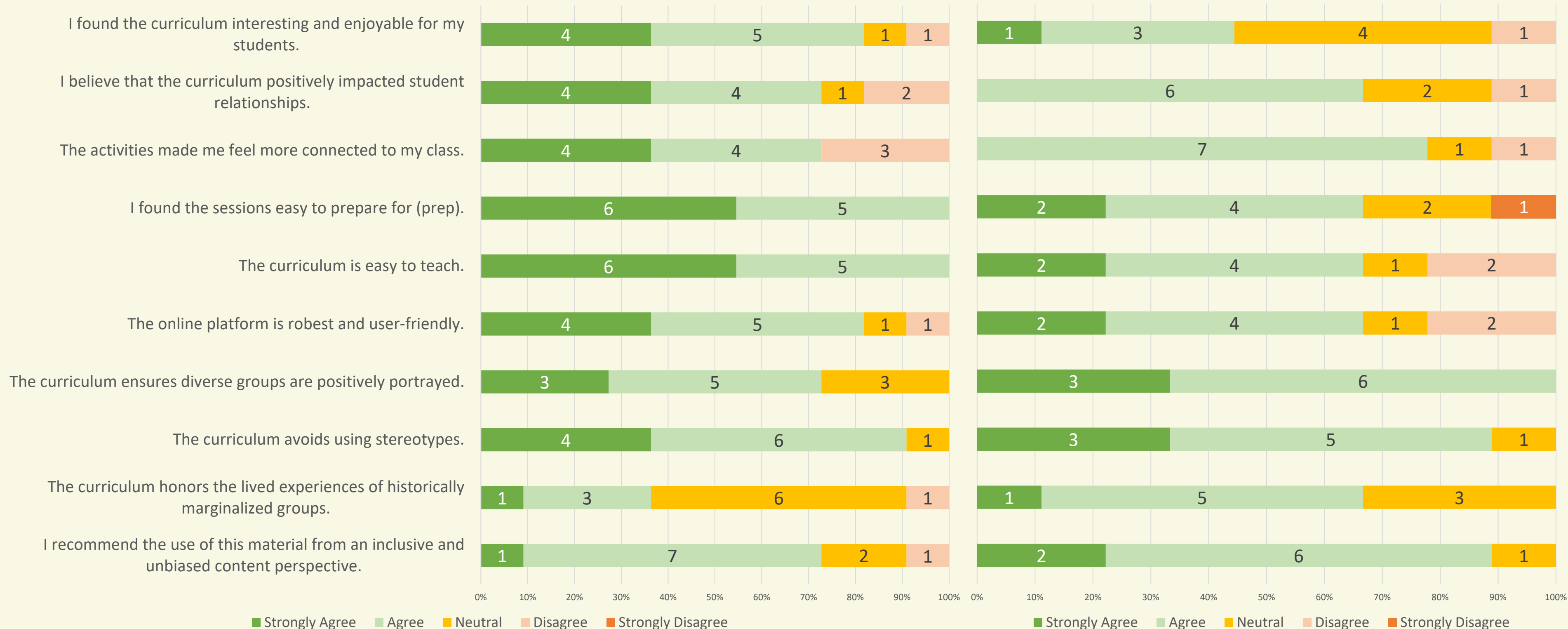




# Pilot Educator Feedback

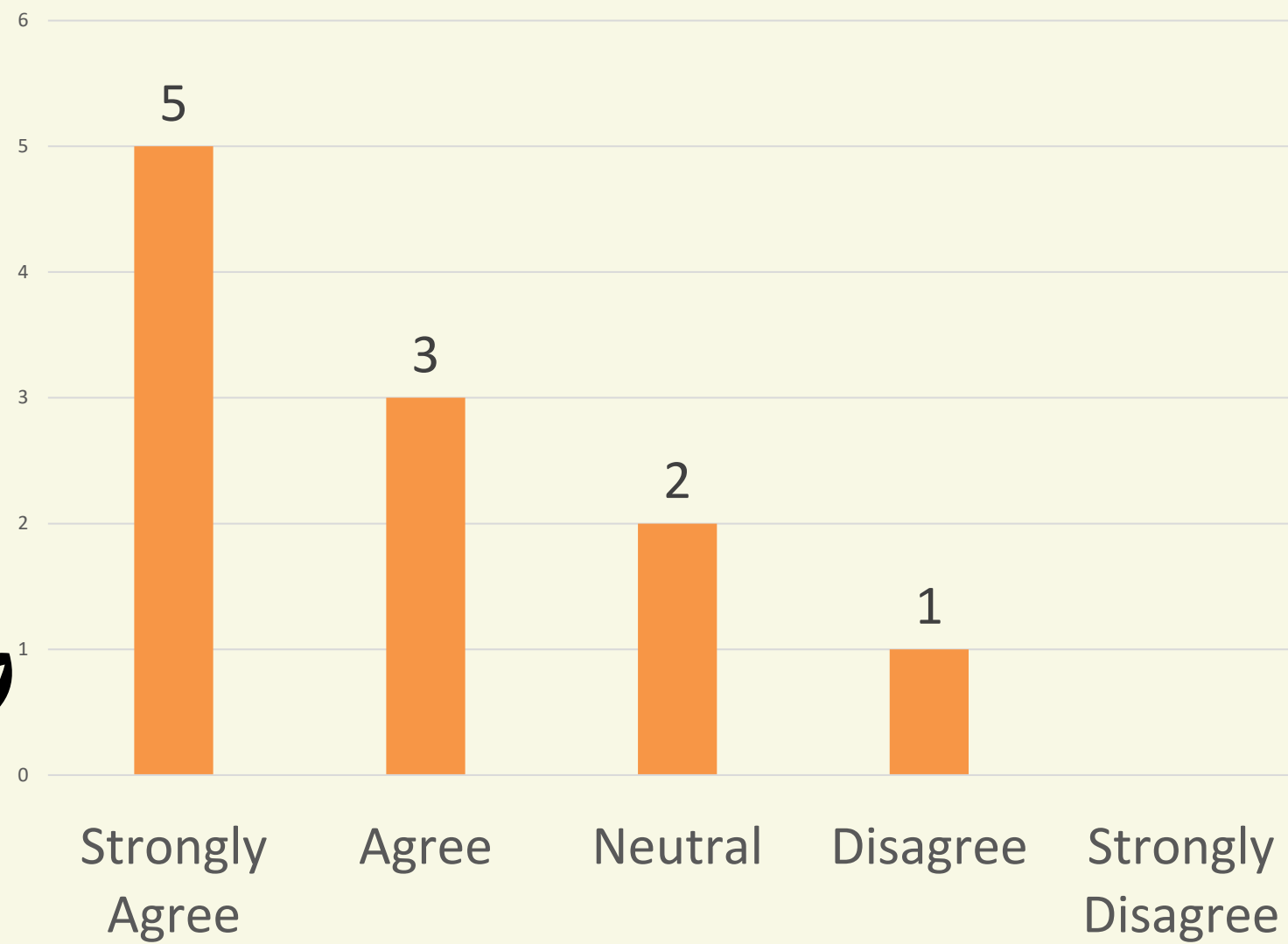
CharacterStrong (n=11)

Second Step (n=9)

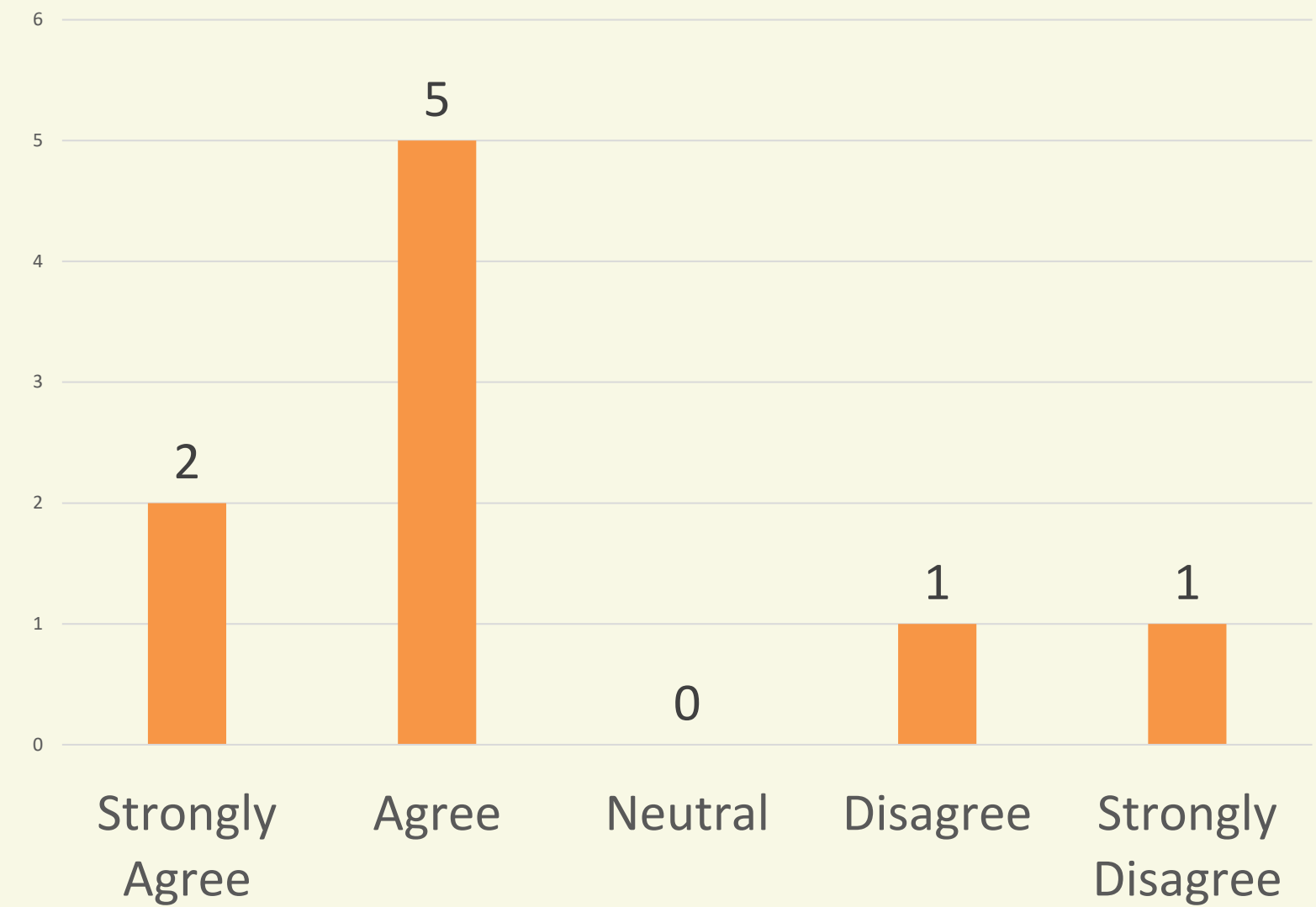


# Pilot Educator Feedback

I support the District adopting CharacterStrong for middle school.



I support the District adopting Second Step for middle school.



# NonPilot Staff Feedback

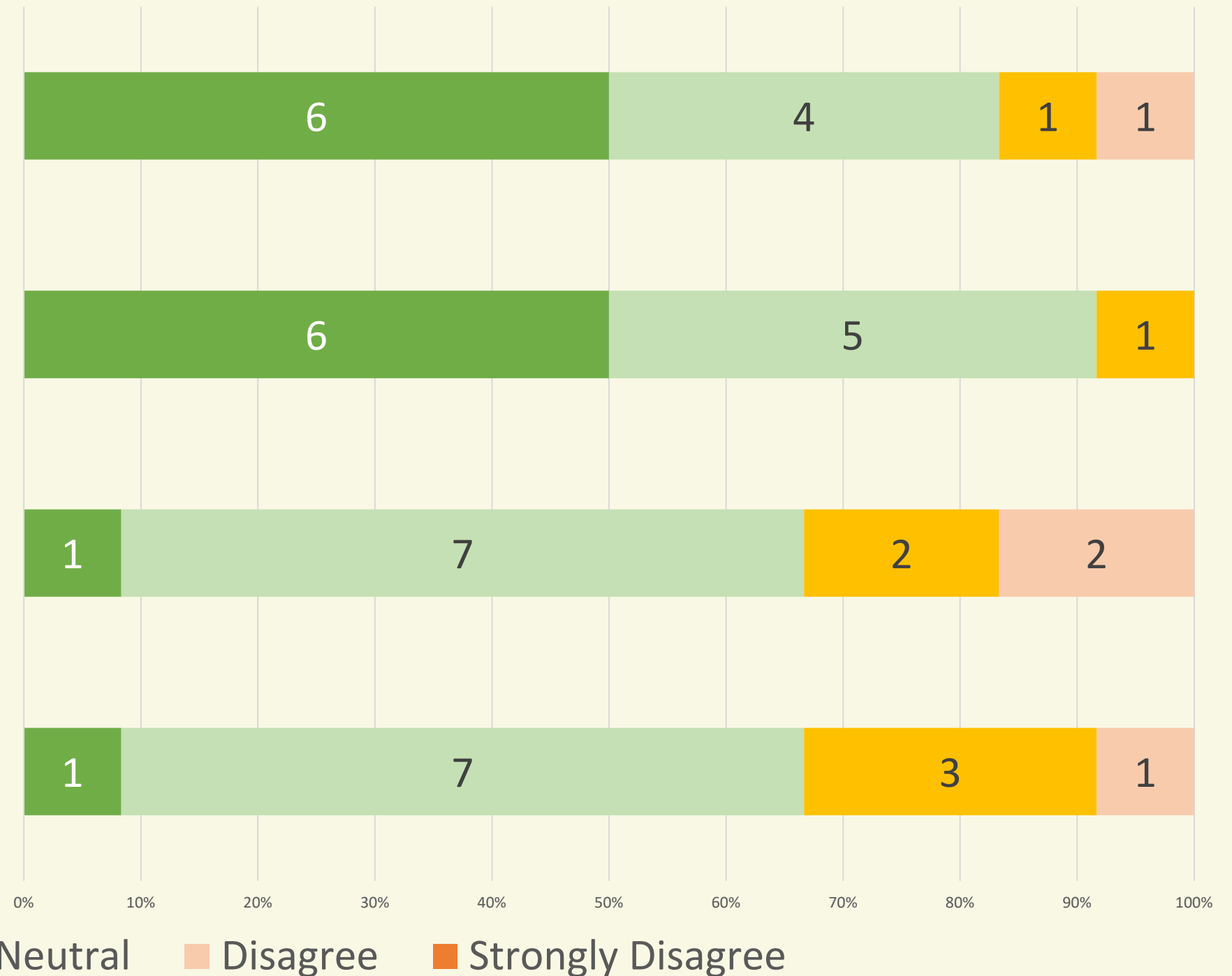
## SEL Curriculum Comparison (n=12)

CharacterStrong is interesting, relevant and engaging for students.

CharacterStrong would be easy to implement.

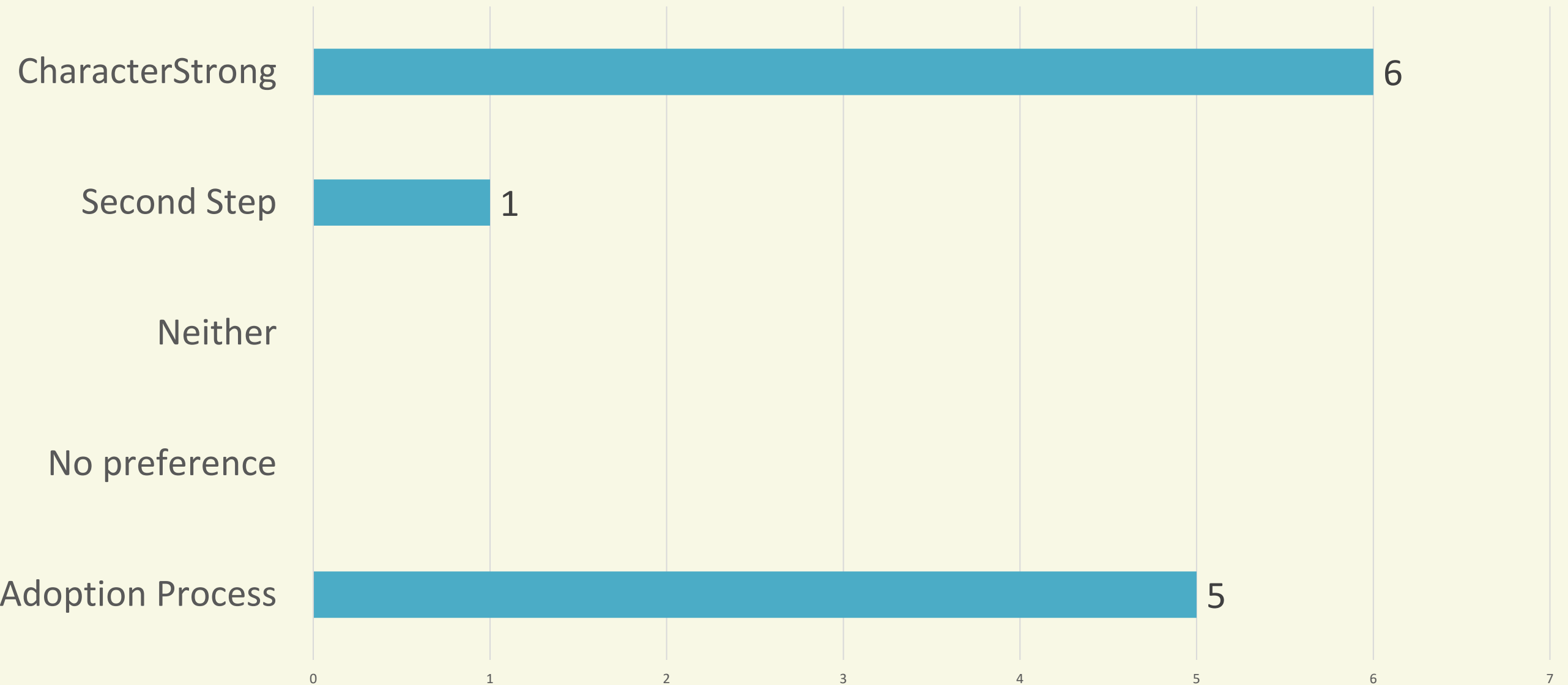
Second Step is interesting, relevant and engaging for students.

Second Step would be easy to implement.



# NonPilot Staff Feedback

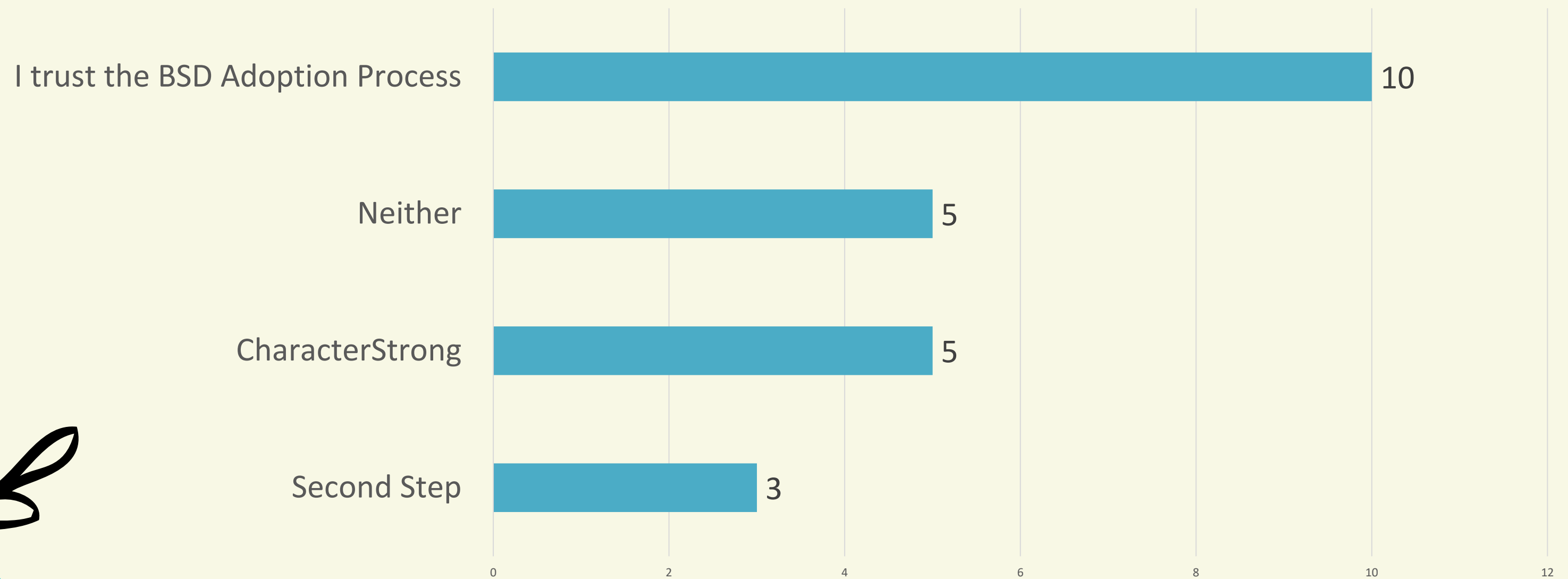
Which curriculum do you believe would best serve the SEL educational needs of our middle school students?



I trust the BSD Adoption Process

# Family Feedback

Which curriculum do you believe would best serve the SEL educational needs of your child/student? (n=23)



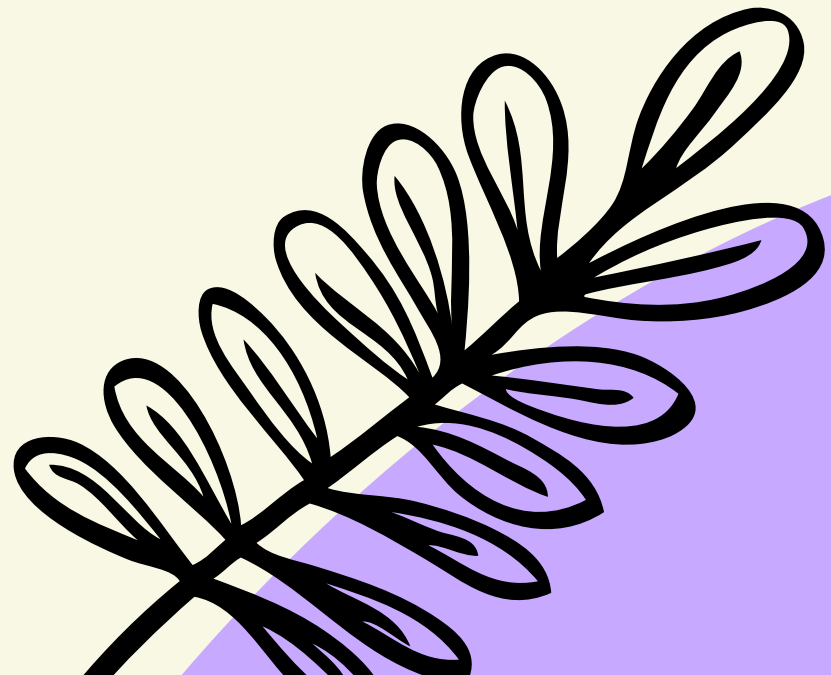
# Discussion

Be mindful of including all voices



# Reaching Consensus

Are we ready to consider a recommendation?





# Next Steps

## Review:

- Critical Criteria
- Bias Review
- Board Memo
- Presentation Slide Deck

May 6<sup>th</sup> – all documents due to IMC

May 23<sup>rd</sup> – IMC Meeting

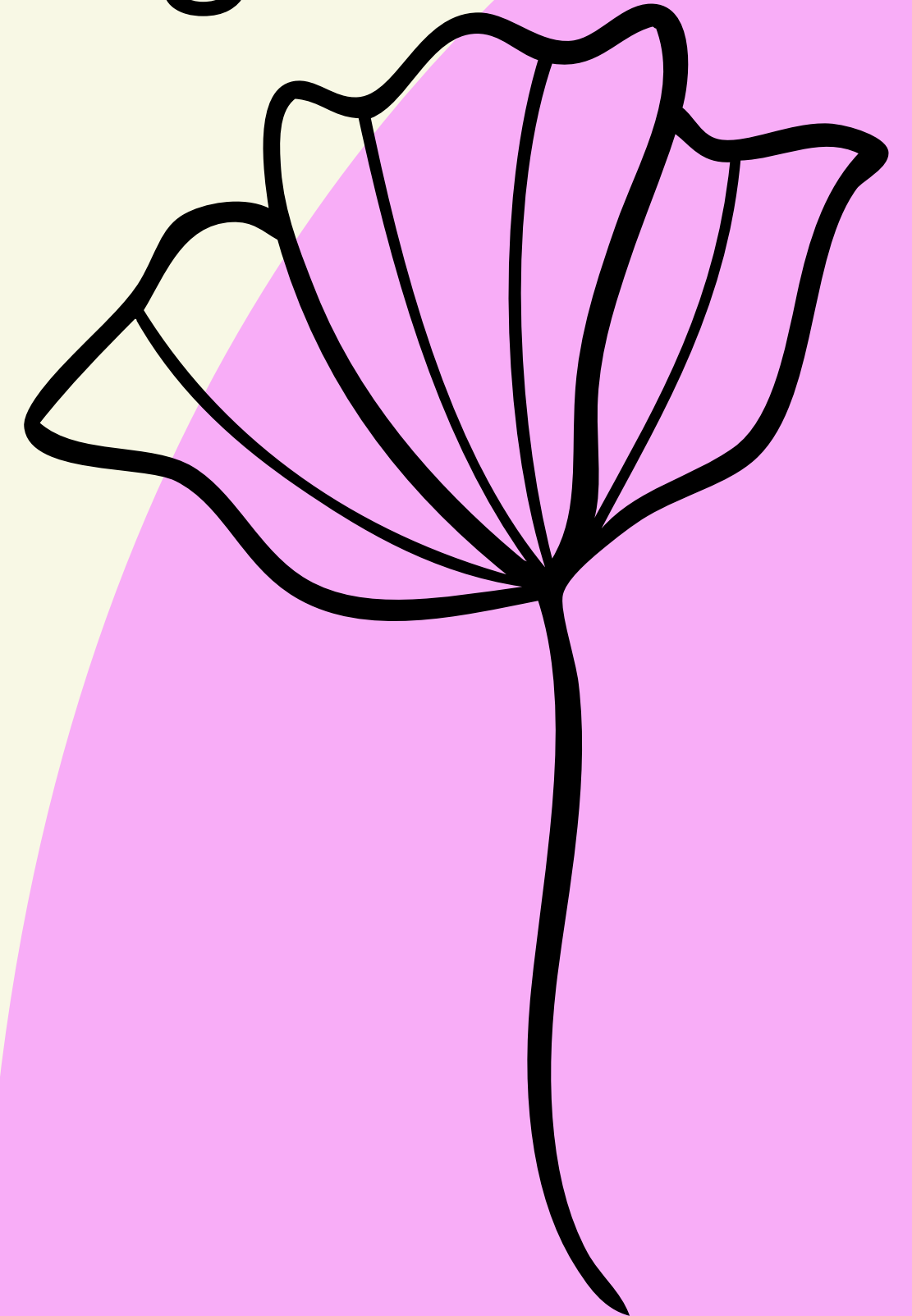


# Next Committee meetings

- April 30<sup>th</sup>
- May 7<sup>th</sup>

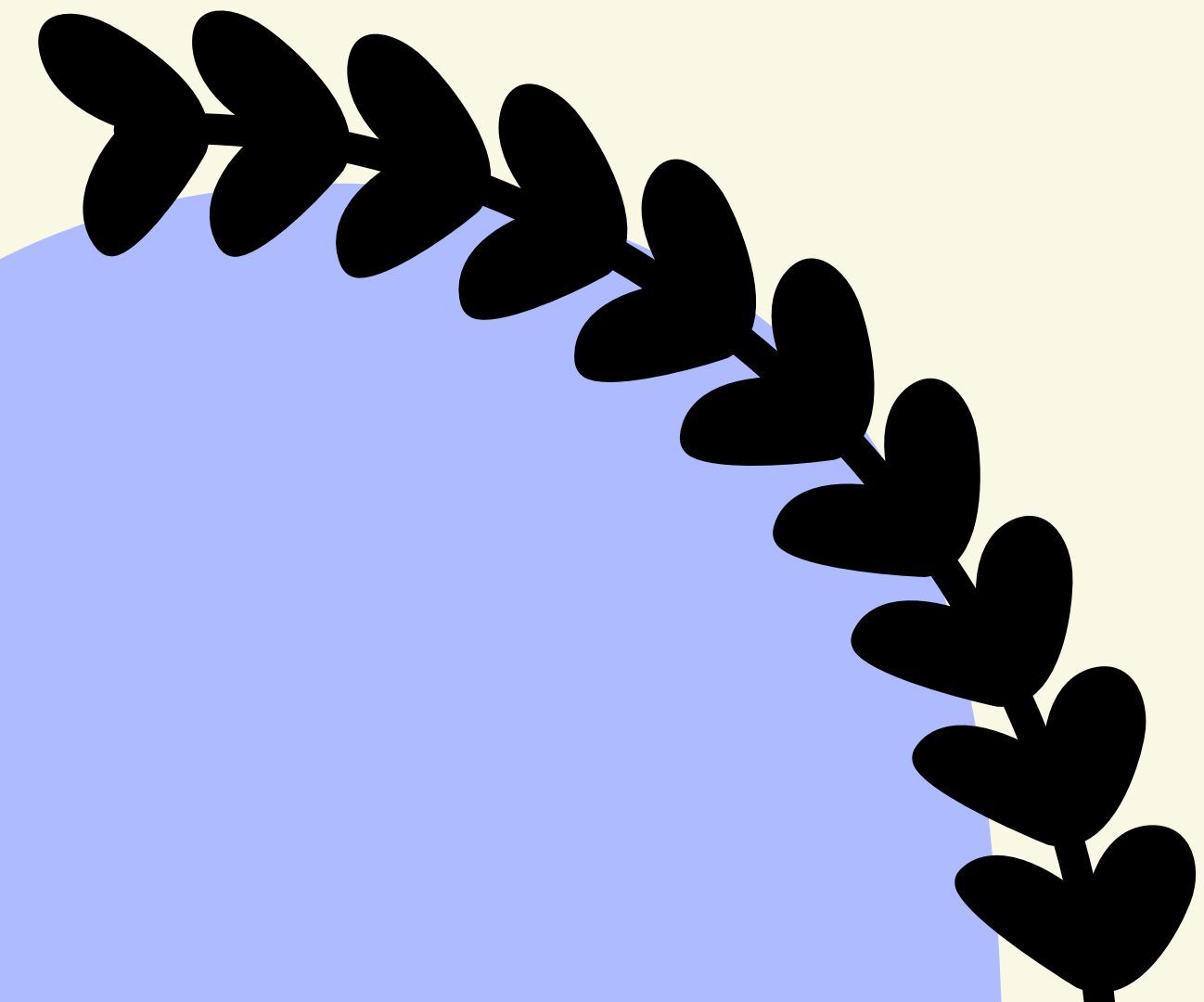
# IMC Presentation

- May 23<sup>rd</sup>
- Committee Members invited



# Closing

What is something that inspired  
you today?



# Signin & Feedback

4/18/24 MS SEL Adoption  
Committee Meeting Sign-In



<https://forms.office.com/r/hH4Sb9FMBa>

