



Ocean View **School District**

Middle School Boundary **Village View Presentation**

Presented by

Michael Conroy, Ed.D., Superintendent

Keith Farrow, Assistant Superintendent, Administrative Services

December 13, 2023

Presentation Topics

1. Board Policy
2. Operational Criteria
3. Communication
4. Community Meetings
5. Information Meetings
6. Intra-District Transfers
7. Transportation
8. Q & A

Board Policy 5116

Consider the following factors:

1. School enrollment data, including declining enrollment patterns
2. Facility capacity and design
3. School feeder patterns, including maintaining, to the extent practical, continuity of student attendance
4. Federal, state, or county mandates
5. Community input
6. Student safety
7. Transportation capacity

Board Policy 5116

Consider the following factors (*continued*):

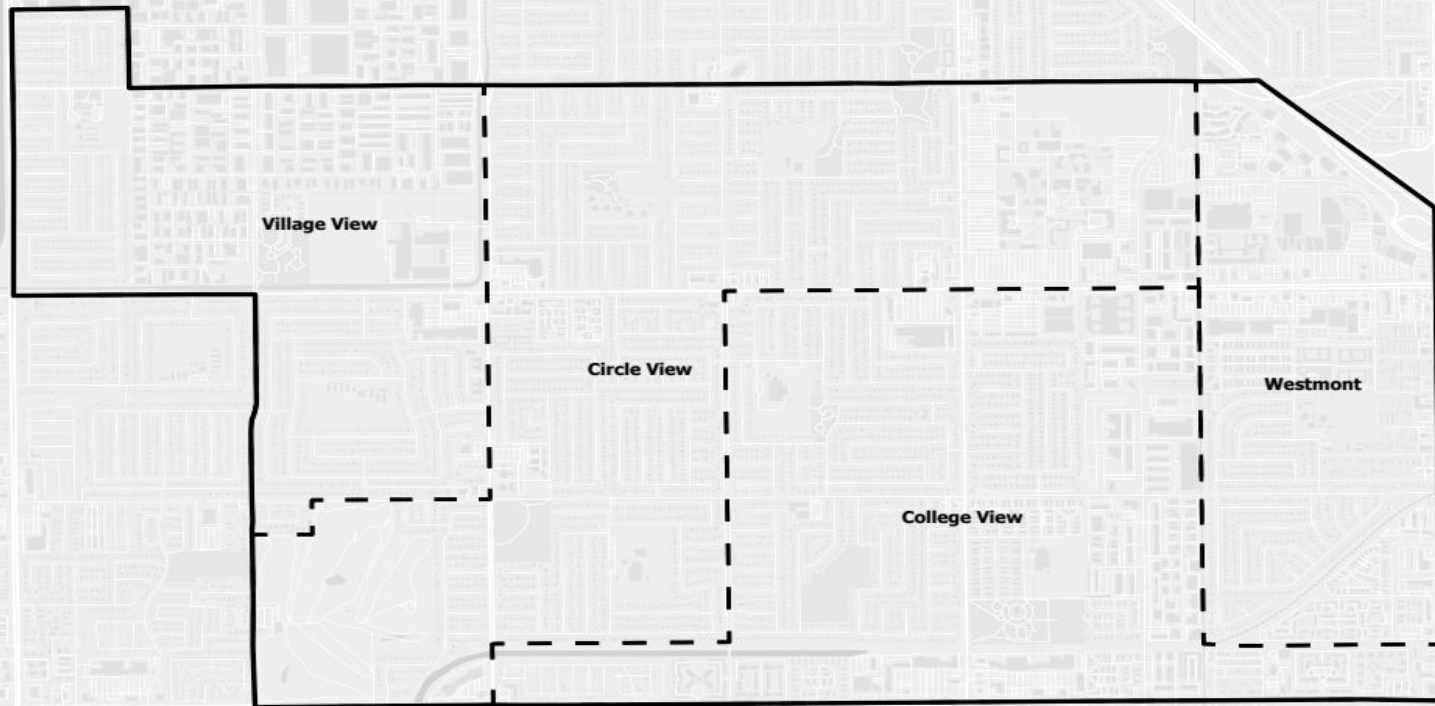
- 8. Community and neighborhood identity
- 9. Geographic features of the District, including traffic patterns
- 10. Educational programs, such as magnet school
- 11. Consistency between municipal boundaries and high school boundaries
- 12. Other factors - Operational Criteria

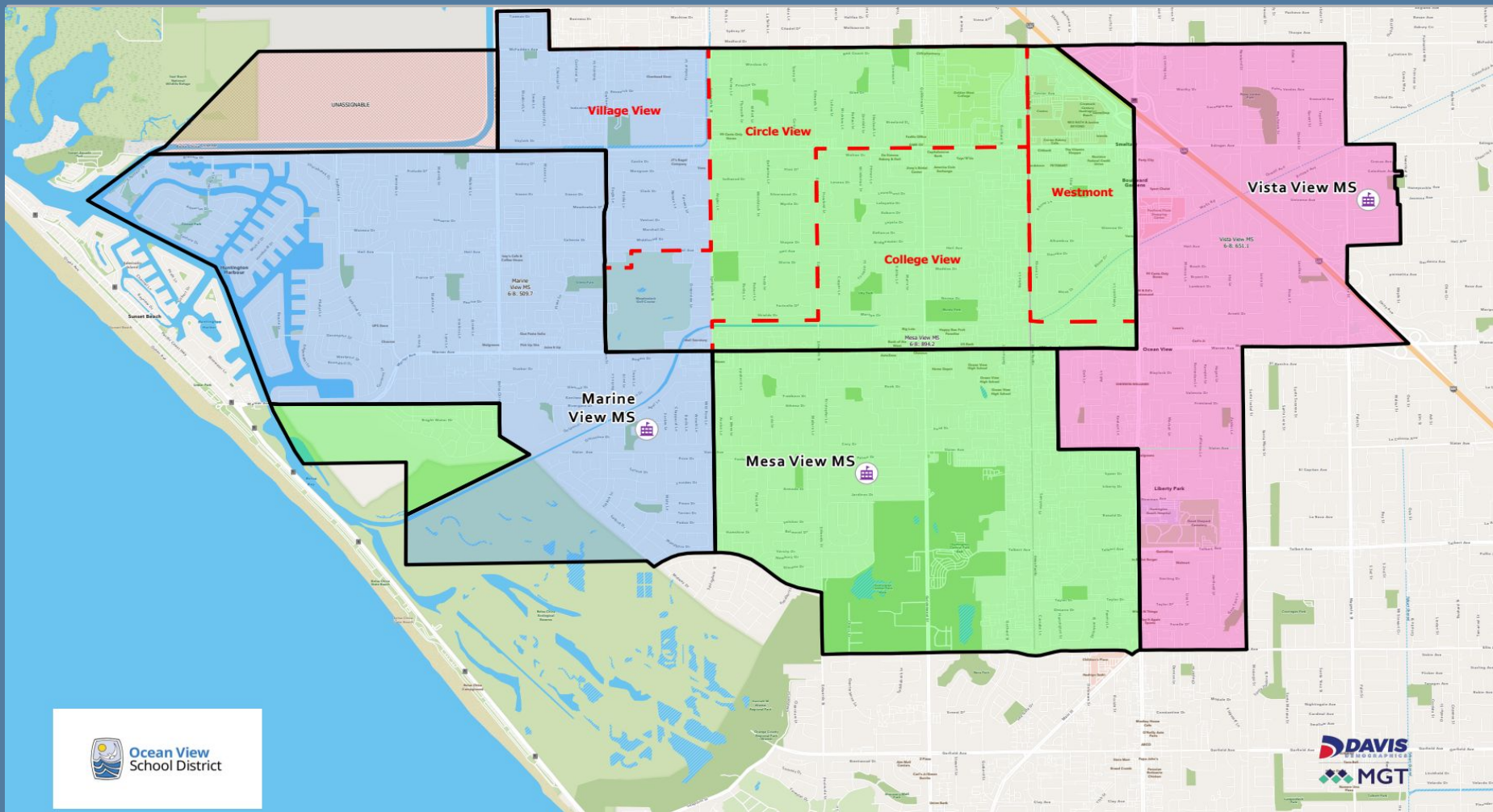
Operational Criteria

Consider the following factors:

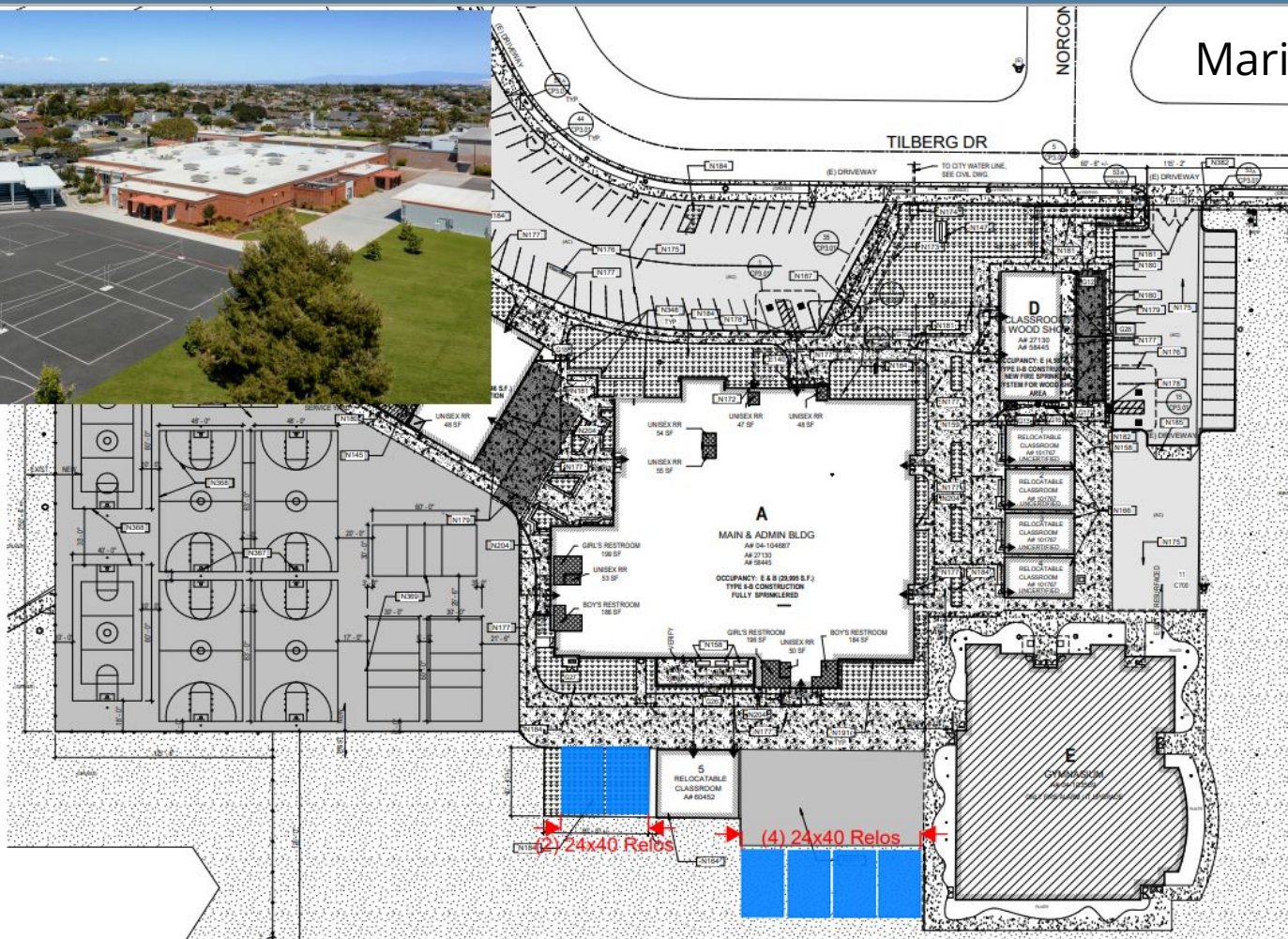
1. Use major thoroughfares for boundaries
2. Keep neighborhood/tracts together
3. Utilization thresholds - School enrollment should be balanced to school capacity
4. Transportation routes - Students can easily and safely travel to assigned schools
5. Build upon existing attendance areas
6. Minimize the number of intra-district transfer submissions
7. Program flow - elementary programs that transition well to middle school

Spring View Attendance Area





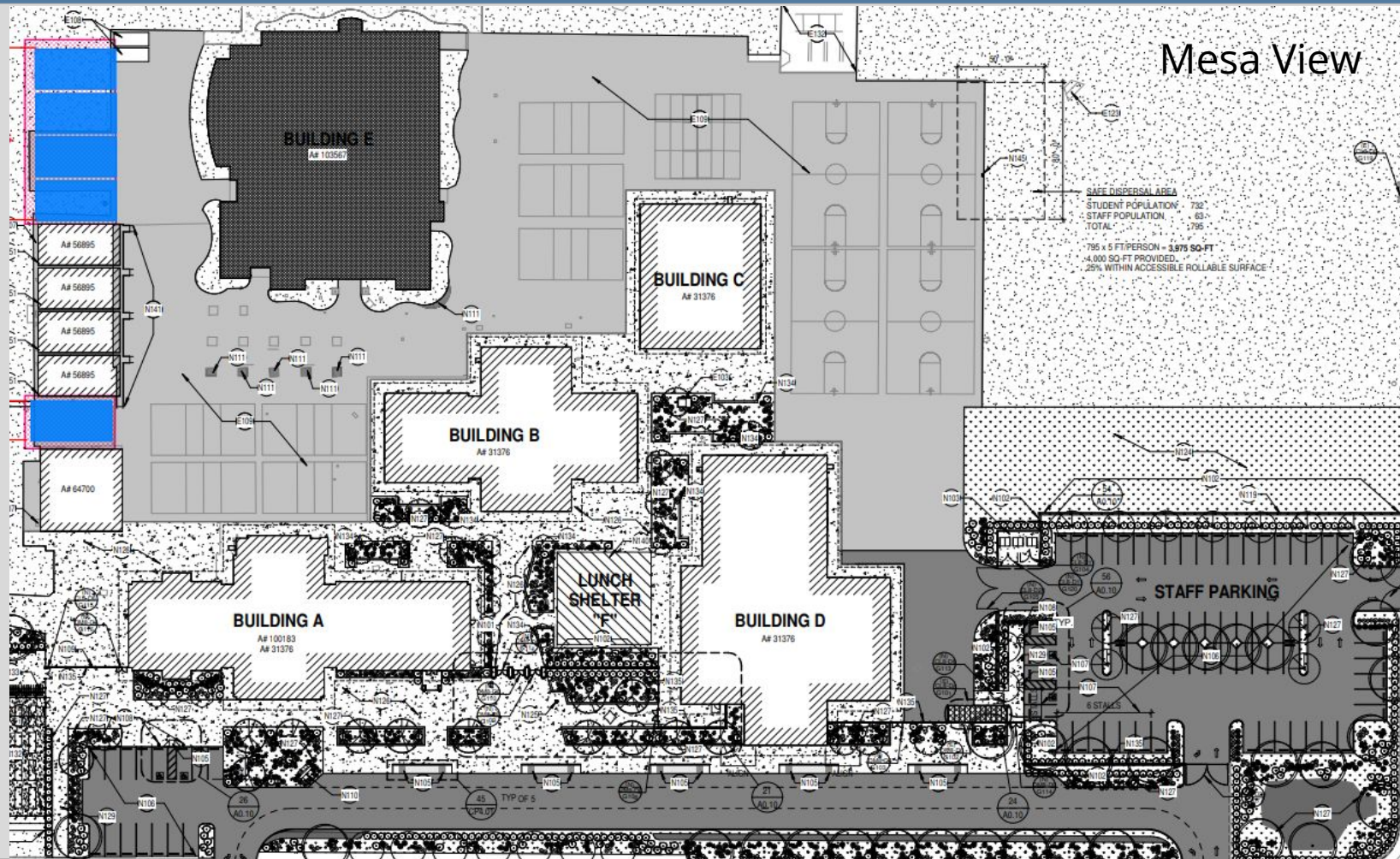
An aerial photograph of a school campus. In the foreground, there is a large, dark asphalt basketball court with white court lines and a basketball hoop on the left. To the right of the court is a large, single-story brick building with a flat roof and several circular skylights. A paved walkway leads from the court area towards the building. In the background, there is a residential neighborhood with many houses and trees, and distant mountains are visible under a clear blue sky.

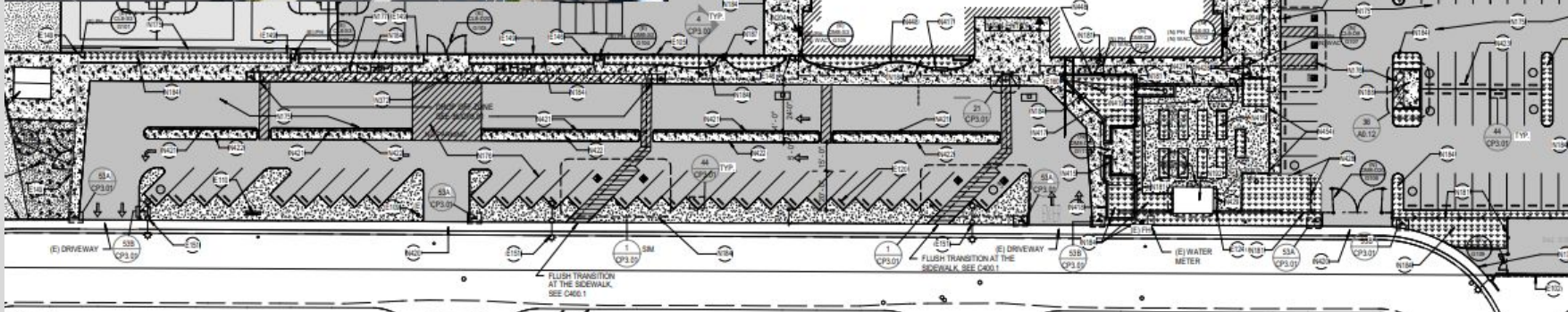


SAFE DISPERSAL AREA

STUDENT POPULATION	732
STAFF POPULATION	63
TOTAL	795

795 x 5 FT/PERSON = **3,975 SQ-FT**
4,000 SQ-FT PROVIDED.
25% WITHIN ACCESSIBLE ROLLABLE SURFACE





Communication

1. Spring View middle school community Parent Square message
2. Impacted Elementary School District & Principal Parent Square messages:
 - a. Village View (*Spring View attendance area*)
 - b. Circle View
 - c. College View
 - d. Westmont (*former Sun View attendance area*)
3. Spring View Middle School residences within school boundary letter
4. Districtwide Parent Square message
5. Social media messaging

Community Meetings

1. Elementary school community meetings:
 - a. Village View Dec 13 5:30 pm MPR
 - b. Circle View Dec 19 5:30 pm MPR
 - c. Westmont Dec 19 7:00 pm MPR
 - d. College View Dec 20 5:30 pm MPR
2. Combined elementary school community meetings:
 - a. Spring View gym Jan 11 or 18 *need to only attend one
3. Combined elementary school community meetings:
 - a. Spring View gym Jan 31 or Feb 7 MPR *need to only attend one

Board & Community Meeting Timeline

Board Mtg Dec 12 Presentation

Elementary school community meetings

Dec 13-20

Board Mtg Jan 10 Presentation

Combined elementary school community meetings

Jan 11 or Jan 18

Board Mtg Jan 23 Presentation

Combined elementary school community meetings

Jan 31 or Feb 7 *MPR*

Board Mtg Feb 13 Presentation + Public Hearing

Board Mtg Feb 27 Board Approval

Spring View Students & Parents' Information Meetings

In addition to community boundary change discussions, information will be provided specifically to the Spring View students and parents, as follows:

Student Assemblies	Marine, Mesa, Vista students' presentations - January 16-18
Students/Parents	Site tours to Marine, Mesa, Vista - Jan 16, 17, 18
Spring View Parent Tour	Tours at Marine, Mesa, Vista Saturday Jan 27
Parents' Information Night	General Information (Boundaries, Transportation, transfer process, GATE, SpEd, etc.) Feb 7
District Middle School Night	Location TBD, Feb 15

Presentation Topics

1. Intra-District Transfers
2. Transportation
3. Q & A

Questions?