



Ocean View **School District**

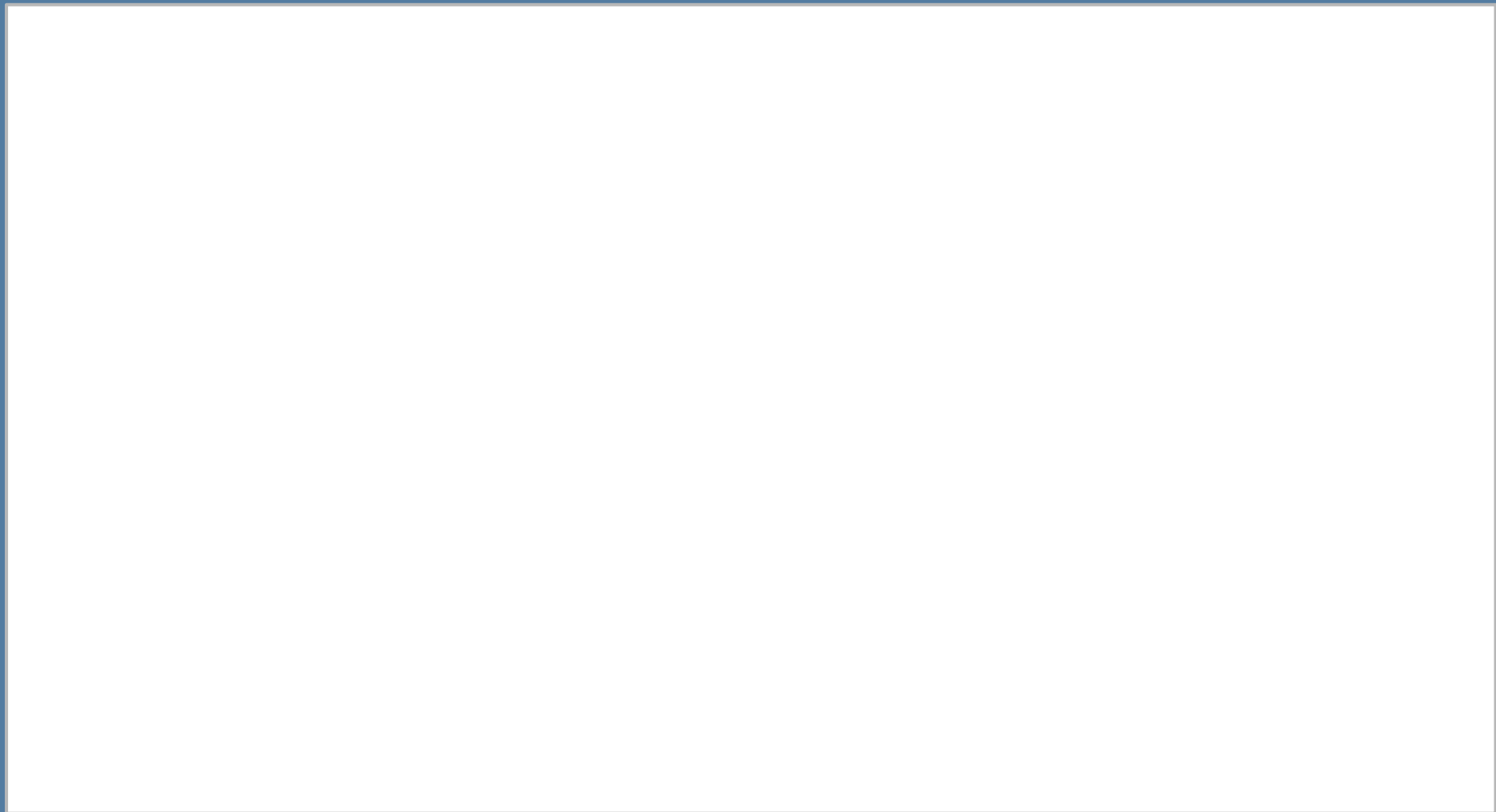
Middle School Boundary **Board Presentation**

Presented by

Michael Conroy, Ed.D., Superintendent

Keith Farrow, Assistant Superintendent, Administrative Services

January 10, 2024



Agenda

1. December Community Topics
 - a. Board Policy
 - b. Operational Criteria
 - c. Timeline
 - d. Boundary Options & School Capacity
 - e. Spring View Students & Parents' Information Meetings
2. Current Practice (Transfers & Transportation)
3. Q & A

Board Policy 5116

Consider the following factors:

1. School enrollment data, including declining enrollment patterns
2. Facility capacity and design
3. School feeder patterns, including maintaining, to the extent practical, continuity of student attendance
4. Federal, state, or county mandates
5. Community input
6. Student safety

Board Policy 5116

Consider the following factors (*continued*):

7. Transportation capacity
8. Community and neighborhood identity
9. Geographic features of the District, including traffic patterns
10. Educational programs, such as magnet school
11. Consistency between municipal boundaries and high school boundaries
12. Other factors - Operational Criteria

Operational Criteria

Consider the following factors:

1. Use major thoroughfares for boundaries
2. Keep neighborhood/tracts together
3. Utilization thresholds - School enrollment should be balanced to school capacity
4. Transportation routes - Students can easily and safely travel to assigned schools
5. Build upon existing attendance areas
6. Minimize the number of intra-district transfer submissions
7. Program flow - elementary programs that transition well to middle school

Board & Community Meeting Timeline

✓ Board Mtg Dec 12 Presentation

✓ Elementary school community meetings
College View, Circle View, Village View, and Westmont

Dec 13-20

➡ Board Mtg Jan 10 Presentation

Combined elementary school community meetings

Jan 11 or Jan 18

Board Mtg Jan 23 Presentation

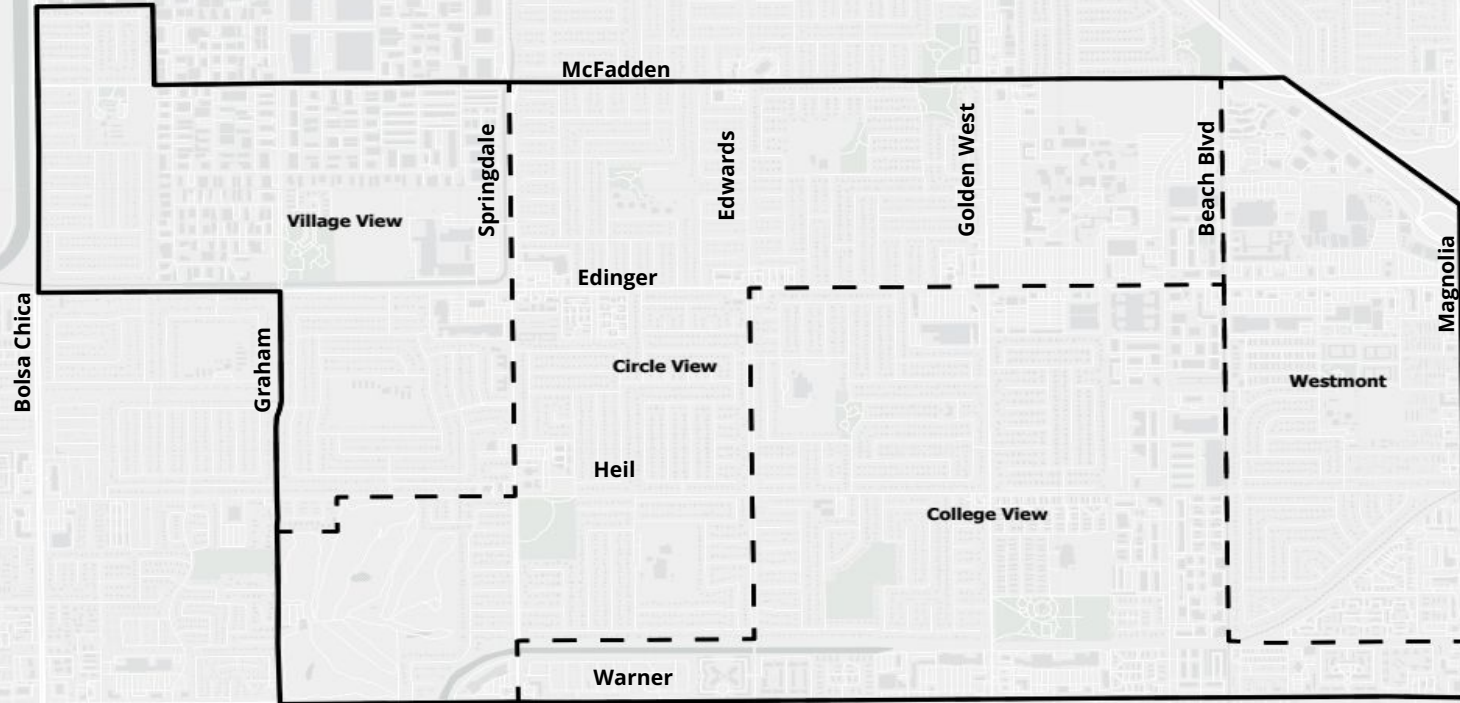
Combined elementary school community meetings

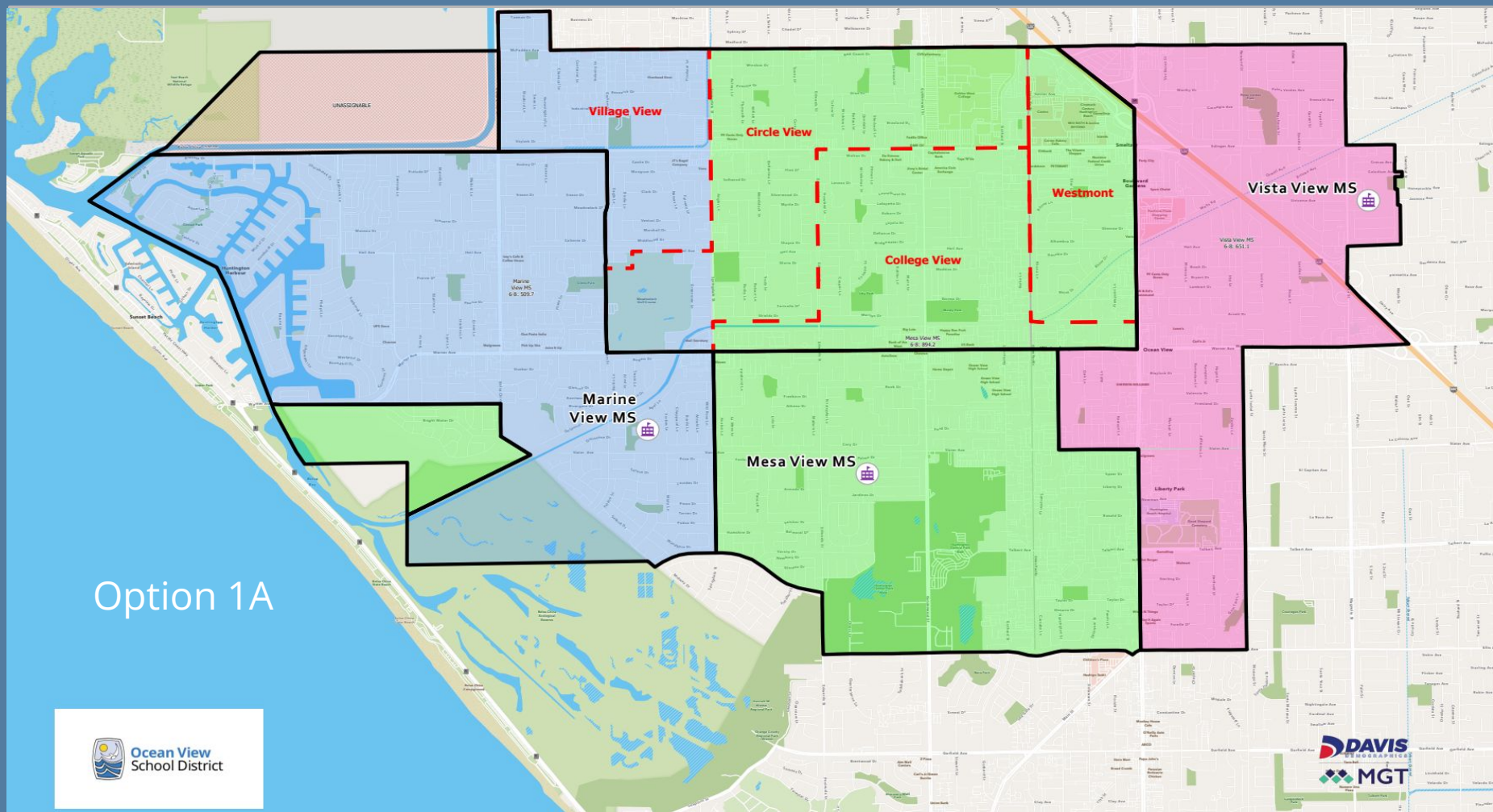
Jan 31 or Feb 7 *MPR*

Board Mtg Feb 13 Presentation + Public Hearing

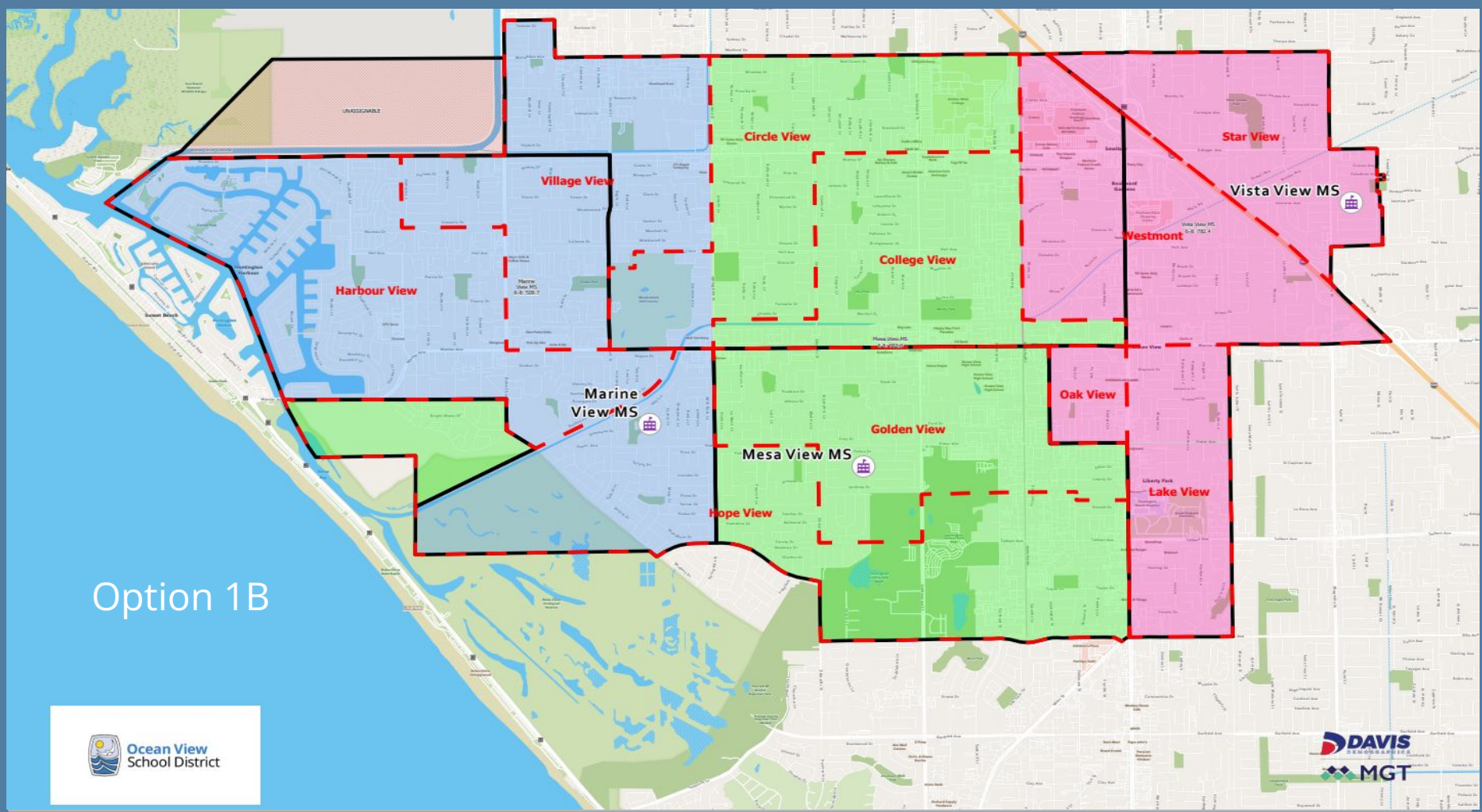
Board Mtg Feb 27 Board Approval

Spring View Attendance Area

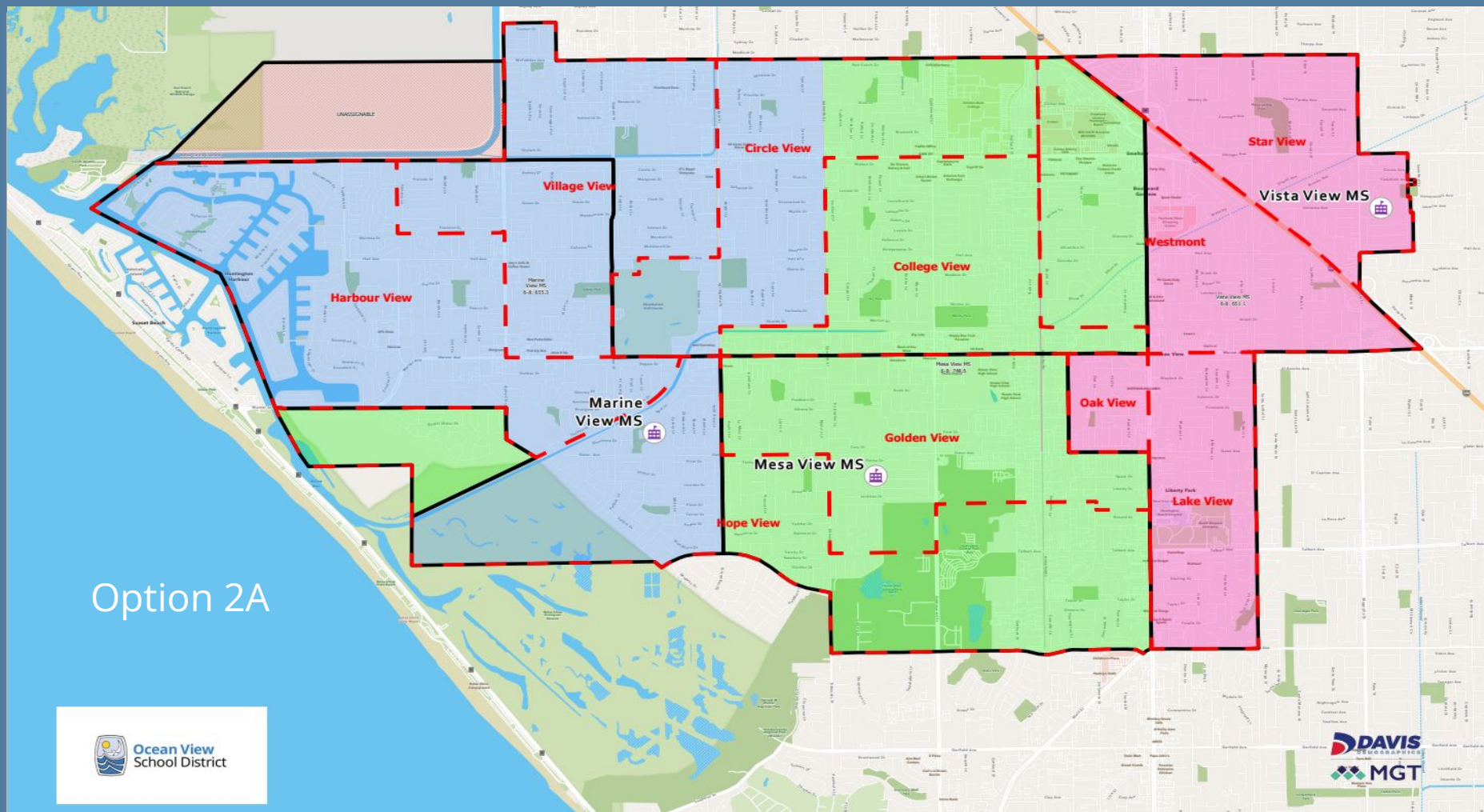




Option 1A



Option 1B



Option 2B



Ocean View
School District

Village View

Circle View

Westmont

Vista View MS

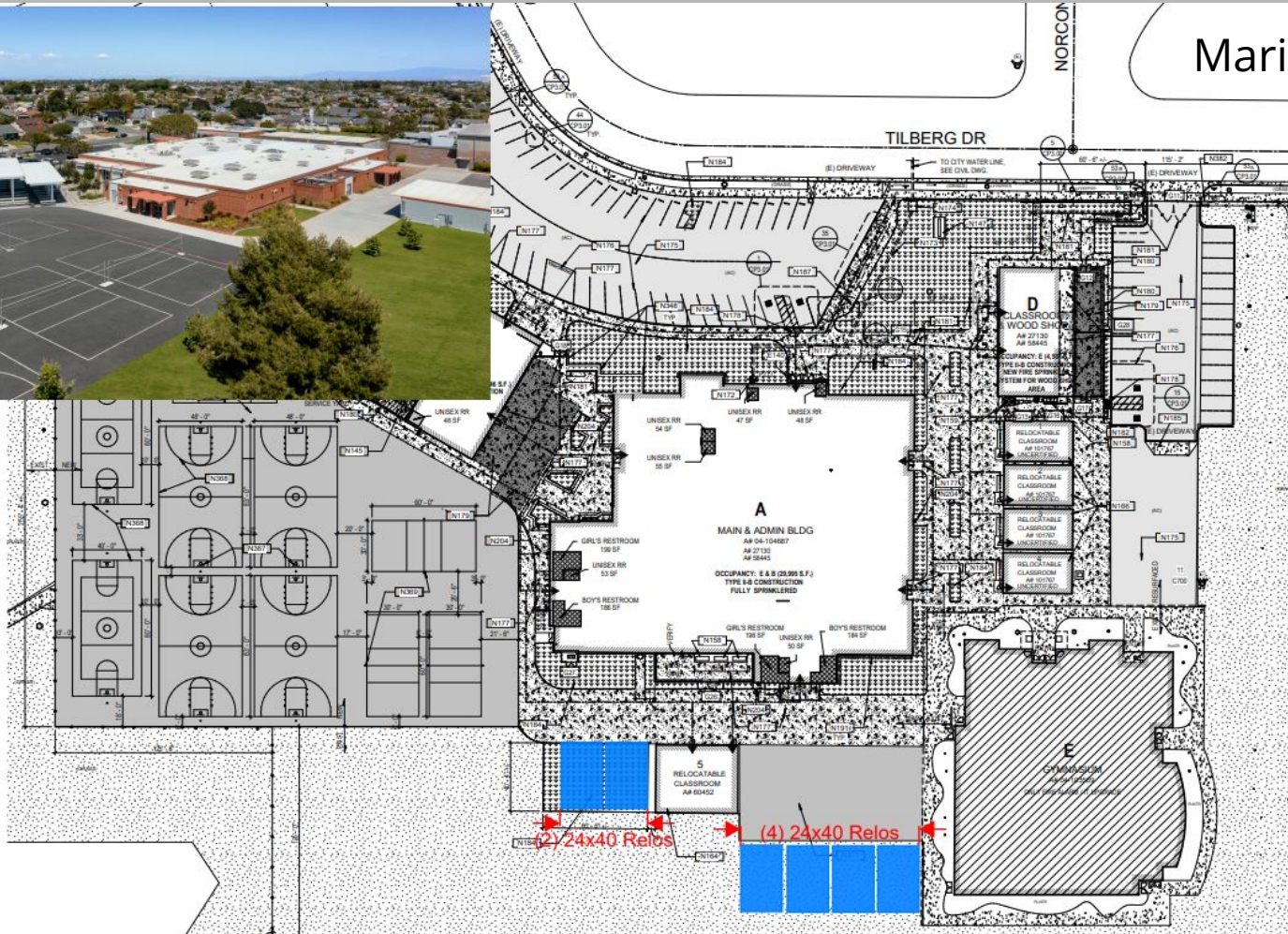
College View

Marine
View MS

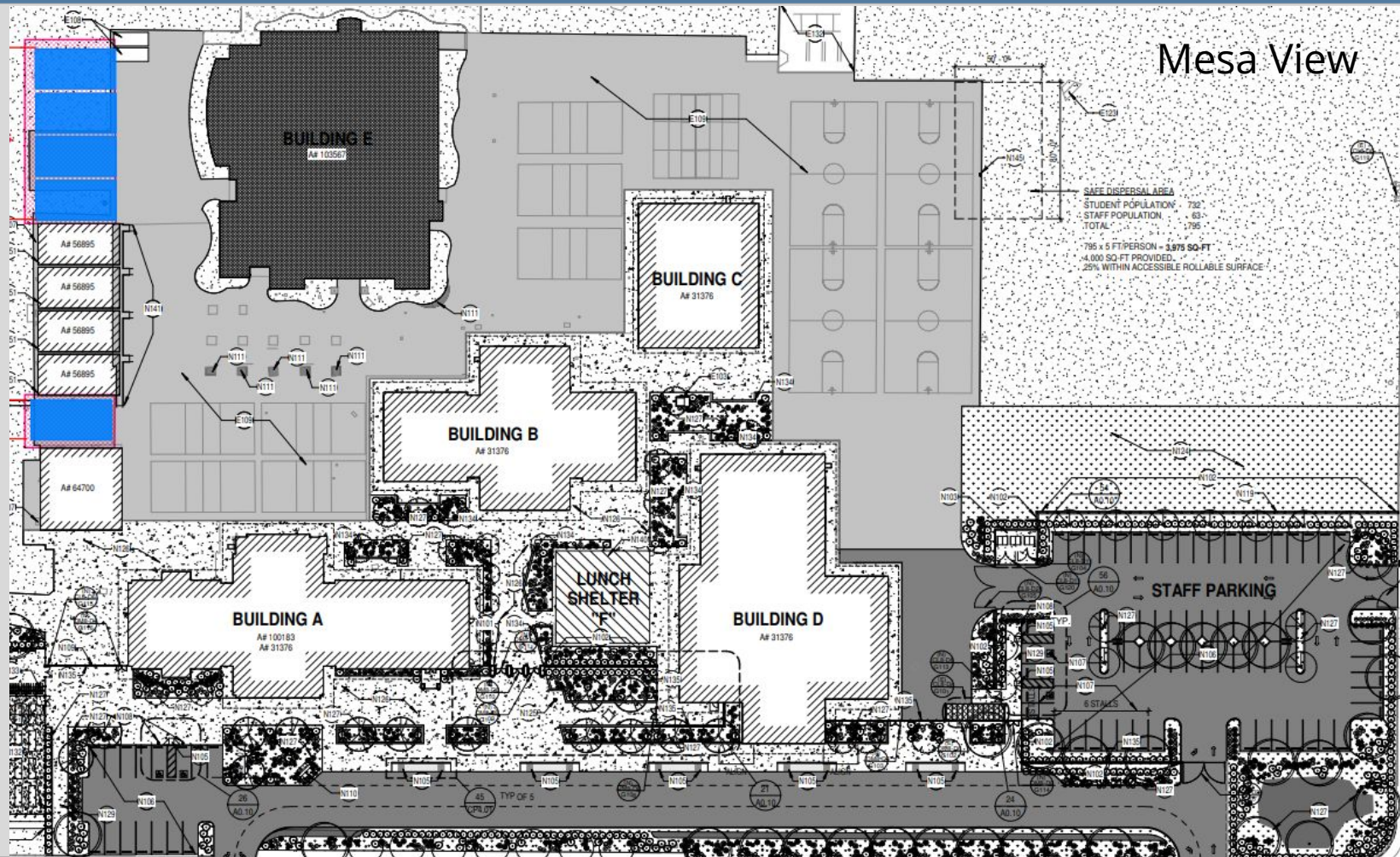
Mesa View MS

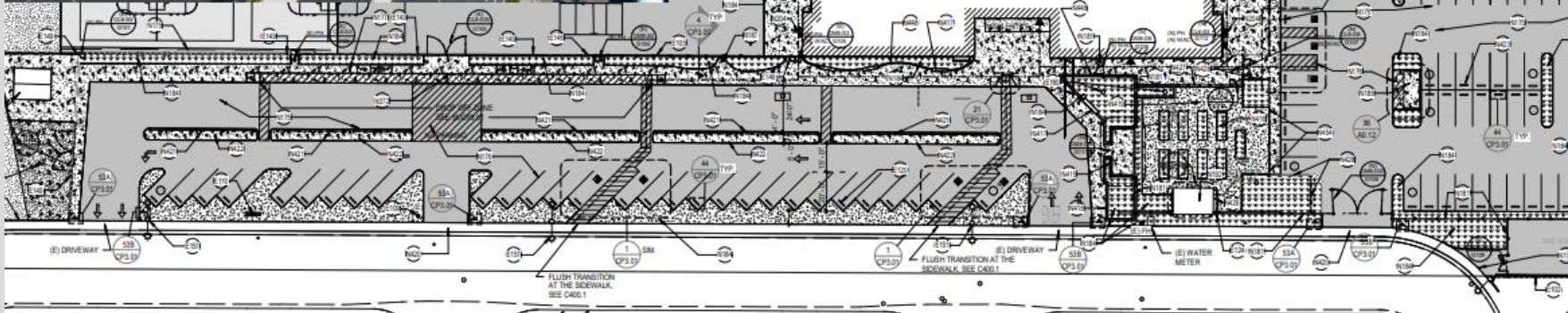


Marine View



AREA
ATION 732
ON 63
795
N = 3,975 SQ-FT
VIDED
ESSIBLE ROLLABLE SURFACE:





Spring View Students & Parents' Information Meetings

Upcoming information will be provided specifically to the Spring View students and parents:

Student Assemblies	Marine, Mesa, Vista students' presentations - January 16-18
Students/Parents	Site tours to Marine, Mesa, Vista - Jan 16-18
Spring View Parent Tour	Tours at Marine, Mesa, Vista - Saturday, Jan 27
Parents' Information Night	General Information (Boundaries, Transportation, transfer process, GATE, SpEd, etc.) Feb 7
District Middle School Night	Vista View, Feb 15

Next Steps Board & Community Meeting Timeline

Combined elementary school community meetings Jan 11 or Jan 18 5:30 PM

Spring View Gym

Same presentation, only need to attend one meeting

Board Mtg Jan 23 Presentation

Combined elementary school community meetings Jan 31 or Feb 7 5:30 PM

Spring View Gym/Feb 7 (MPR)

Same presentation, only need to attend one meeting

Board Mtg Feb 13 Presentation + Public Hearing

Board Mtg Feb 27 Board Approval

Current District Practice

(Board Policy 5116.1)

1. Intra-District Transfers

- a. Based on requested school enrollment and space capacity
- b. Sibling currently attends requested school on a permit

2. Transportation

- a. Special Education
- b. Oak View to Vista View
- c. Not provided for Intra-District Transfers, Program Placements, or Choice of District Program
- d. Duration? And for whom?

Questions?