



OCEAN VIEW SCHOOL DISTRICT

2020-21 SCHOOL REOPENING & PROTECTION PLAN



Updated: August 11, 2020

This document is subject to change in accordance with state guidelines.

Ocean View School District 2020-21

WHAT FAMILIES CAN EXPECT AS SCHOOLS REOPEN

The health and safety of the Ocean View School District (OVSD) community is of the utmost importance. When the 2020-21 school year begins, on-campus school will look much different than previous years due to COVID-19 and new health and safety measures. This plan to reopen schools is based on current guidance from public health officials and state agencies and will likely be updated as the situation evolves.

It is important to note District plans must focus sharply on academic instruction to enhance student performance and address learning loss. At the same time, OVSD is also committed to maintaining the physical, mental, and social well-being of OVSD students.

As students return, it will look different.

Screening at Home:

- Students and adults are recommended to self-screen for respiratory symptoms, such as cough and shortness of breath prior to coming to school each day. Students and adults experiencing those symptoms should stay at home.
- Staff members are required to self-screen and complete a daily temperature check prior to coming to work. If staff members are experiencing symptoms, they should stay home and contact Human Resources.

Arriving at School:

- Each student will have their temperature taken.
- Students and staff members will be required to wear masks/shields.
- Parents and visitors will have limited access to the school campus.
- School sites will designate routes for entry and exit in order to limit direct contact with others.
- School sites will have signage throughout campus to remind students and staff about social distancing, hand washing, and spreading germs.
- The District is committed to securing additional safety equipment, including but not limited to: hand-washing stations, touch-free thermometers, student partitions, and more.

FACE COVERINGS & PPE

In accordance with the [California Department of Public Health's \(CDPH\) Guidance for Face Coverings:](#)

- Teach and reinforce use of face coverings, or in limited instances, face shields.
- All staff are required to wear face coverings.
- All students 2 years old to 8th grade are required to wear face coverings while at school, except individuals who are exempt. While in the classroom or in organized activity outside, under the supervision of a teacher, and when social distancing can be achieved through other means (i.e. plexiglass), the teacher may direct students to remove their face coverings as necessary for the student's well-being and health. A face shield is an acceptable alternative for children ages 2 to 2nd grade who cannot properly wear a face covering. Persons younger than two years old, anyone who has trouble breathing, anyone who is unconscious or incapacitated, and anyone who is otherwise unable to remove the face coverings without assistance are exempt from wearing a face covering.
- Students and staff should be frequently reminded not to touch the face covering and to wash their hands frequently.
- Information will be provided to all staff and families in the school community on proper use, removal, and washing of cloth face coverings.
- A cloth face covering or face shield should be removed for meals, snacks, naptime, outdoor recreation, or when it needs to be replaced. When a cloth face covering is temporarily removed, it should be placed in a clean paper bag (marked with the student's name and date) until it needs to be put on again.
- Students will be excluded from campus if they are not exempt from wearing a face covering under CDPH guidelines and refuse to wear one. Students who inadvertently fail to bring a face covering to school will be provided a face covering to prevent unnecessary exclusions. Students who are excluded from campus will be offered alternative educational opportunities.

OTHER SAFETY CONSIDERATIONS

- Staff members will complete mandated COVID-19 online trainings (Hand Washing, Coronavirus Awareness, and Use of Face Coverings).
- Campuses will follow guidelines developed by CDPH for cleaning and disinfecting school campuses.
- Common touch surfaces will be cleaned regularly (counter tops, door handles, restrooms, student desks, student chairs, etc.)
- Physical barriers will be installed in front office areas where face-to-face interaction with the public occurs.
- Staff and students will be expected to wash/sanitize their hands regularly.
- Every classroom and employee work area will be provided hand sanitizer to use and/or a hand washing station.
- Schools will limit sharing of supplies between students to the extent possible and encourage students to take home personal items for cleaning daily.
- Signage will promote healthy hygiene practices and reminders to stay home when ill. Students will be encouraged to bring refillable water bottles.
- Playground equipment will be regularly cleaned for limited student use.



HEALTH & SAFETY

The safety of employees and students is OVSD's first priority. Schools have been completely cleaned and disinfected, and OVSD will continue to adhere to all necessary safety precautions. In addition to the deep clean of the office and school before employees and students return, the steps outlined below will be implemented on a routine basis to disinfect:

- Staff will clean and disinfect frequently touched surfaces on campuses, such as doorknobs throughout the school and workday.
- Playground equipment and shared objects will be limited.
- Shared equipment transferred between students and/or staff will be regularly cleaned and sanitized.
- Schools will post signs in workplaces and common areas, emphasizing basic infection-prevention measures, including hand-washing signs in restrooms.
- Schools and workplaces will maintain adequate supplies to support healthy hygiene behaviors.
- Cleaning and disinfectant products align with the Environmental Protection Agency-approved list. Custodians will follow product instructions and Cal/OSHA requirements, including proper ventilation during cleaning and disinfecting.



Food

Bringing or sharing refreshments is prohibited in order to limit the risk of contamination.

Students may not share lunch or food items.

We ask that there be no food or personal deliveries at sites.

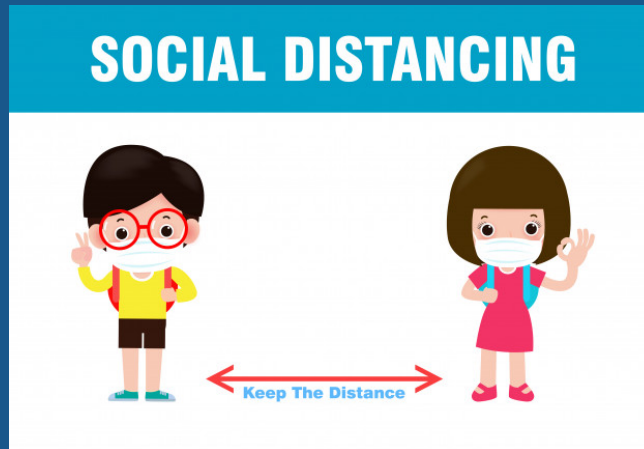
Student Arrival & Dismissal

Each school will establish student arrival and dismissal protocols to minimize contact between students, staff, families, and the community as much as practical.

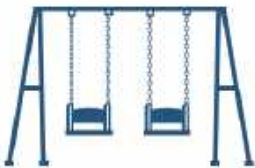
Signage will clearly designate entrances and separate exits, if possible.

SCHOOL FACILITIES

Social distancing will limit the spread of the virus. Schools will adhere to the following strategies to maintain social distancing, to the extent possible.



- During regular school hours, school sites will restrict non-essential visitors, volunteers, and activities involving other groups.
- Group activities will be limited wherever possible, i.e., assemblies, award ceremonies, athletic competitions.
- Classroom space will be arranged to remove non-essential furniture, allowing maximum space for students and staff.
- Student desks will be arranged to face the same direction and individual Plexiglass shields will be placed on each desk.
- Plexiglass shields will be placed between the teacher and students, whenever possible.
- Six feet of social distance will be maintained between the teacher and students when possible.
- Routes will be designated for entry and exit to lunch, recess, and other transition times, as feasible.
- Staff will be asked to practice social distancing, including but not limited to, the following:
 - When working indoors or in outdoor areas
 - Before and after the work shift
 - Coming and going from vehicles
 - Entering, working, and exiting physical buildings or other structures
 - During breaks and lunch periods



Students will have access to limited playground equipment during recess and will be encouraged to maintain social distancing where possible.



Food and Nutrition Services will serve a limited selection of menu items to minimize lines. Students will eat lunch in designated lunch areas outside of the classroom where possible.

EDUCATIONAL OPTIONS

Quality instruction and a commitment to equity for all students continue to be a focus for the OVSD educational programs. Knowing the needs of students and families vary, the District has provided two instructional options for the 2020-21 school year.

For the 2020-21 academic year, OVSD will provide families a choice of instructional options, including:

- In-Person School - coupled with mandated Distance Learning as needed
- Virtual Academy - 100% online virtual school

IN-PERSON SCHOOL

Coupled with Mandated Distance Learning as Needed

Fall instruction in the Ocean View School District will begin with Mandatory Distance Learning, per Governor Newsom's order, until Orange County has been off the state's COVID-19 Monitoring List for 14 days.

- Students will be kept in class cohorts for the entire day, to the extent possible.
- School hours will be modified to facilitate thorough cleaning and sanitization, as well as to provide teachers ongoing professional development.
- If necessary, a hybrid schedule (½ time at school and ½ time distance learning) may be utilized in certain instances.
- Support will be provided for students' social emotional development, and opportunities will be provided for interaction between students, as well as between students and staff.
- Standards-based curriculum utilizing District core adoptions delivered by OVSD teachers.
- Supports special programs such as Dual Language Immersion, STEAM, VAPA, Environmental Science Education, etc.
- Traditional grading will be utilized.
- Students with disabilities, students with diverse learning needs, students who are medically vulnerable, English Learners, and Gifted and Talented (GATE) students' needs will be addressed as needed.

OCEAN VIEW VIRTUAL ACADEMY

- High quality standards-based instructional programs will be provided that prepare students to return to school in person for the 2021/22 school year.
- Assignments will be posted weekly with consistent due dates.
- Students will be required to attend live teaching sessions.
- Instruction will be a combination of asynchronous (videos, on-line tutorials) and synchronous (Zoom/ in person), along with independent opportunities (ex: ST Math, typing programs).
- Parents/guardians will need to establish the learning environment, assist with monitoring work completion, and be prepared to answer in the moment questions and provide support when the teacher is not immediately available.
- Standards-based curriculum utilizing District core adoptions will be delivered by OVSD teachers.
- Learning schedule is flexible.
- Traditional grading will be utilized.
- Students with disabilities, students with diverse learning needs, students who are medically vulnerable, English Learners, and Gifted and Talented (GATE) students' needs will be addressed as needed.

LEARNING ENVIRONMENT CONSIDERATIONS

IN-PERSON SCHOOL

(coupled with Mandated Distance Learning as needed)

PROS

- Offers structured learning environment in a familiar face-to-face setting
- Allows for student collaboration and social interaction
- Structured Learning Schedule
- Students & staff will be familiar with distance learning platforms if an outbreak requires school or classroom closure

CONS

- Requires social distancing and PPE
- Based on Public Health guidance, the program may pivot between face-to-face instruction and Mandated Distance Learning
- Pivoting to Mandated Distance Learning may result in childcare and support difficulties.

VIRTUAL ACADEMY

PROS

- Students can work at their own pace
Students can work at any time of day
- The instructional program can be tailored to student needs
- Low safety risk
- Stable schedule and delivery model for the school year.

CONS

- Limited face-to-face interaction with other students
- Parent support needed
- Requires self-discipline and self-motivation on the part of the student
- Special programs such as Dual Language Immersion, STEAM, VAPA, and Environmental Science etc., are not available

What is the difference between Mandated Distance Learning and the Virtual Academy?

Mandated Distance Learning is part of the In-Person school program. It is a temporary response to school closures to ensure the continuity of learning for students. As soon as permitted, In-Person instruction will resume, terminating Mandated Distance Learning.

The Virtual Academy is a year long, on-line program that does not pivot to any other instructional delivery model.

Can a student move from the Virtual Academy back to the In-Person School program or vice-versa at any time?

Each program is intended to be a full year long. Requests for changes will be honored based on space availability.

If my child enrolls in the Virtual Academy, will he/she be guaranteed a space to return to their in-person school in 2021-22?

Parents MUST enroll their child during the spring 2021 enrollment window in order to ensure placement.

In-Person School - 3 Phases

Phase 1 - Mandated Distance Learning

Per Governor Newsom's Order, school will start with mandated Distance Learning until Orange County is off the state's COVID-19 Monitoring List for 14 days.

Phase 2 - Hybrid Model

When Orange County is cleared from the state's COVID-19 Monitoring List for 14 days, the In-Person Return to School model will begin with a hybrid schedule. We will remain on a hybrid schedule for a minimum of six weeks. Then, we will carefully monitor the health statistics and evaluate OVSD's ability to safely return to school for more time each week and/or 100% in-person. At the conclusion of six weeks, OVSD will communicate to families regarding when we will transition from hybrid to full in-person. We anticipate that we will make such transitions on a Monday. This is subject to change based on updated circumstances and health expert recommendations.

Phase 3 - Traditional Model (100% In-Person)

As health statistics improve, OVSD will return to 100% in-person instruction.

**For more information on
2020 School Reopening Models & Options,
including FAQs and sample schedules
please visit:**



bit.ly/OVSD2020

Special Education

Students Requiring Special Education Services

- Special Day Class (SDC) - To the extent possible, students who require a special day class for the majority of their day will attend school with their SDC teacher.
- General Education inclusion time will be implemented to the extent feasible given existing state and local health and safety guidelines.
- Students who receive Specialized Academic Instruction (SAI) from a Resource Specialist (RSP) will follow the general education schedule.
- SAI services will be provided in a push-in or pull-out model according to student's IEP.
- Speech, Occupational Therapy, Physical Therapy, Behavior Support, Counseling, Adaptive PE, and Low Incidence Disability Services will be provided based on the IEPs of the students.
- Private school students on an Individual Service Plan (ISP) and preschoolers with disabilities who receive Occupational Therapy and/or Speech Therapy will receive services at their assigned campus once in-person instruction resumes in OVSD.

ATTENDING TO THE SOCIAL EMOTIONAL WELL-BEING OF OUR STUDENTS WILL BE A TOP PRIORITY AS THEY RETURN TO SCHOOL.



District and school staff are committed to supporting students' social emotional wellness and offering resources to ensure students transition back to school smoothly. Support may include social-emotional learning, building relationships, virtual community-building activities, and increased access to mental health/wellness services. Families and schools will need to work together to evaluate how students are feeling and assess their individual needs to provide support during these challenging times.

SAFETY CONSIDERATIONS FOR STUDENTS WITH DISABILITIES

- IEP teams will consider safety requirements for students with disabilities on an individual basis.
- The District will accommodate students with hearing impairments through an IEP or 504 Plan meeting to address the impact of student and/or teacher(s) masks.
- IEP or 504 Plan teams will address individual challenges related to compliance with face coverings for students with disabilities.
- IEP or 504 Plan teams will address the individual needs of students who have intensive medical needs or are part of a high-risk group. Teams will determine the appropriate alternative instructional program which may include virtual learning.

TRANSPORTATION

- Face masks/PPE will be worn by all drivers and District employees.
- All buses will be disinfected between morning and afternoon routes.
- Unless a student has an IEP or health plan directing otherwise, students will be required to use their face coverings while traveling on the bus.
- Bus routes will allow for social distancing on the bus.
- Seating configurations on the bus will be staggered.
- Students will have their temperature taken prior to entering the bus.



COVID-19 Protocols & Notifications - Students

It is important to maintain privacy and prevent discrimination for those who may have COVID-19, while ensuring wellness for other students and staff.

Students who present symptoms while at school

- Students will go to a designated isolation area and be required to wear a mask until they can be picked up by a parent or guardian.
- Areas occupied by the student presenting symptoms will be cleaned and sanitized.
- OVSD administration will coordinate with the Orange County Health Care Agency (OCHCA) regarding suspected and confirmed cases.
- OCHCA will be responsible for working directly with the individual and families for notification and contact tracing.
- OCHCA will assist the District to determine a course of action should an individual test positive for COVID-19 on a case-by-case basis. This may include dismissal of students and staff for a short period.

Note: Parents should be prepared to pick up their student(s) immediately in the instance they develop COVID-19 symptoms while at school. Please be sure to have updated emergency contact information in Aeries.

COVID-19 Protocol & Notification

Should a positive COVID-19 case occur at a school site, the following protocols will be followed:

- In accordance with state and local laws and regulations, school administrators will notify District Office designee with the following information:
 - Name of person confirmed.
 - If known, date of potential exposure.
 - Date of test.
 - Last date of contact in OVSD facility.
 - Names of individuals who had physical contact with an infected person or spent 15 minutes or more within a six feet distance.
- OVSD administration will contact OCHCA for guidance. **Per the direction of OCHCA, OVSD will only notify students, staff, and families who have been potentially exposed to COVID-19 to self-monitor for symptoms, and follow state and local guidance if symptoms develop.**
- In addition, positive COVID-19 cases may lead to the temporary closure of a classroom, multiple classrooms, or even a school. This will be determined by District administration with direction from OCHCA (see Decision Tree on next page).

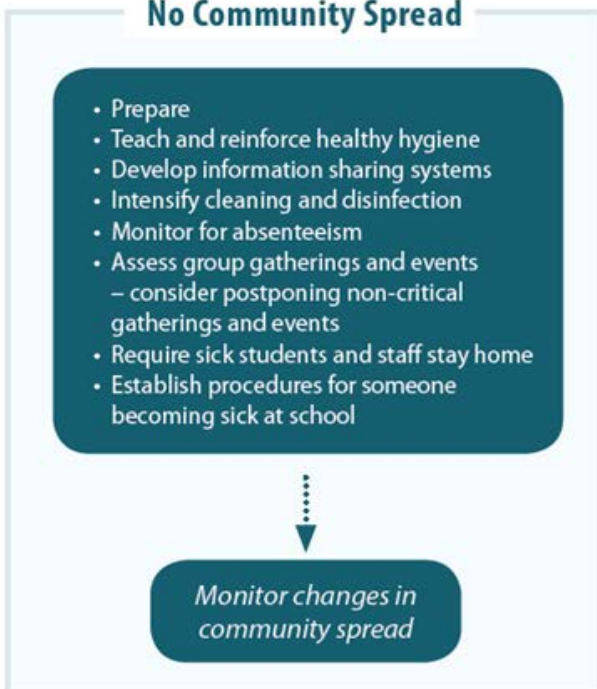
COVID-19 Protocols & Notifications

School Decision Tree

All Schools Regardless of Community Spread



No Community Spread



Minimal to Moderate OR Substantial Community Spread



COVID-19 Protocol & Notification

- OCHCA and CDPH will provide guidance for clearance of individuals infected with COVID-19, including students.
- After a positive diagnosis is made, students are expected to be in isolation for at least 10 days after the onset of symptoms, including 24 hours with no fever and improvement of symptoms.
- Students may not return to school until they meet CDPH criteria to discontinue home isolation.
- School Health Technicians will work directly with families to assist with the return of students once CDPH guidelines are met for discontinuing isolation.

COVID-19 Protocols & Notifications - Employees

Employee Screening

Employees must complete a health screening and be symptom-free prior to work. Employees who are symptomatic for COVID-19 must stay at home and contact Human Resources.

Symptoms include:

- Fever of 100.4 or higher in the last 24 hours
- Chills/unexplained fatigue
- Shortness of breath or difficulty breathing
- Sore throat
- Cough
- Loss of taste or smell
- Muscle Pain
- Headache
- Other flu-like symptoms

Employee Exposure and/or Confirmed Case Scenarios

Since the Governor's Order to close schools began in March, the District has taken measures to ensure the safety of staff working on-site and has monitored possible exposures of COVID-19 among employees.

Close contact exposure to COVID-19 is defined as being closer than six feet for 15 minutes or longer.

Staff who have a confirmed case or believe they have been exposed to a confirmed case of COVID-19, should notify their Supervisor immediately.

Positive Tests:

When a student or a staff member tests positive, Human Resources will contact employees associated with specific locations and persons in the District who may have had an exposure. Student Services will contact families of students who may have been exposed.

Notifications:

- Employees who may have had exposure (closer than six feet for 15 minutes or longer) are contacted and given guidance on current recommendations for quarantine and options for testing/leaves.
- District sites that are determined to be a risk for contact exposure will receive an extensive cleaning in coordination with the Facilities and Maintenance Departments.
- Depending on the location and exposure circumstances, and with guidance from the OCHCA, there may be general notifications provided to the impacted departments or school sites.
- In all notifications, guidelines for privacy of staff under HIPAA will be followed.

It is imperative that we take all expected precautions— social distancing, wearing face coverings, frequent hand hygiene, self-isolation away from others if you are experiencing symptoms, using the utmost care when encountering other people—especially in high risk respiratory activities such as eating and talking.