

COME FALL IN LOVE WITH...



OV&D

WHERE ACHIEVEMENT & RELATIONSHIPS MATTER!



Board of Trustees

Overview of 2021/22 Smarter Balanced Assessments

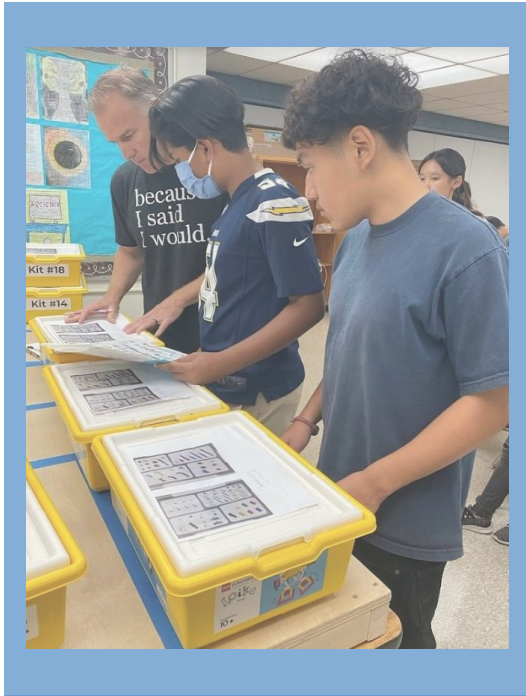
November 15, 2022

-- Ocean View School District --
Educational Services Division

Agenda

- Smarter Balanced Assessment Basics
- Review of 2021/22 Smarter Balanced Assessment Results
- Ways we Use Smarter Balanced Assessment Results

• 2021/22 Smarter Balanced Assessments



Smarter Balanced Assessments

Content Areas: English Language Arts (ELA),
Mathematics & Science

Grades: 3rd-8th & 11th

Administration: After 66% of the instructional
year has been completed

Goal: Standard Met or Standard Exceeded

2021/22: Resumed from 2019 - Shortened Tests
with Revised Results Reporting

• 2021/22 Smarter Balanced Assessments



- An accountability measure reported to the public
- A snapshot at the end of a school year
- Provides an overall performance level for each student

2021/22 Smarter Balanced Assessments



- An accountability measure reported to the public
- A snapshot at the end of a school year
- Provides an overall performance level for each student

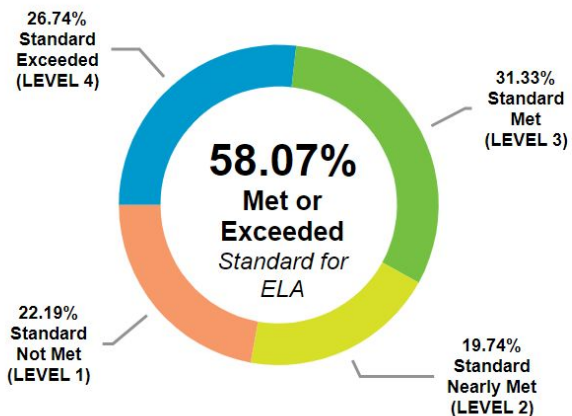
Smarter Balanced results are like a smoke detector... they can tell you whether there is concern but not where, why, or what to do about it.

2021/22 Smarter Balanced Assessments

2021-22 | OVSD Smarter Balanced Assessment Data

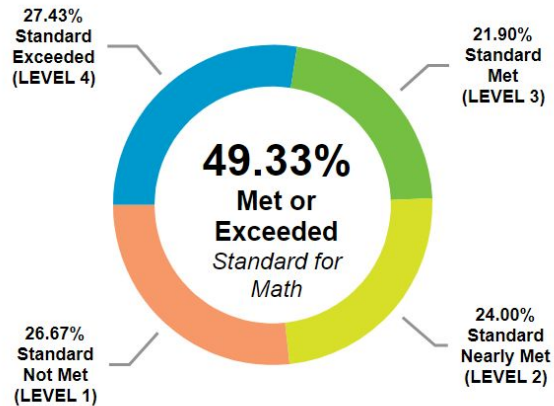
ELA

Percent of students within each achievement level



Mathematics

Percent of students within each achievement level



OCEAN VIEW SCHOOL DISTRICT



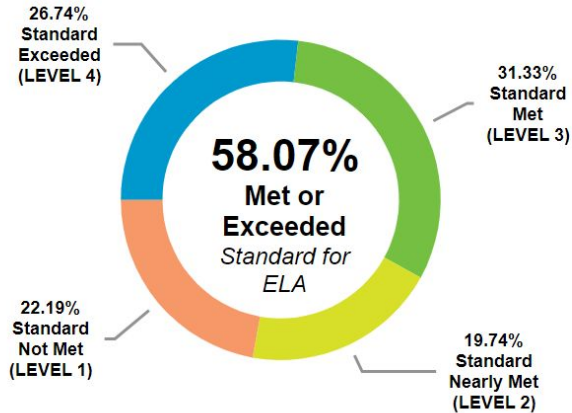
*Connections
Before Content*

2021/22 Smarter Balanced Assessments

2021-22 | OVSD Smarter Balanced Assessment Data

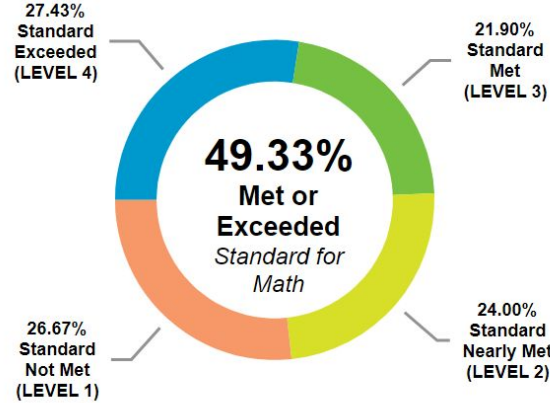
ELA

Percent of students within each achievement level



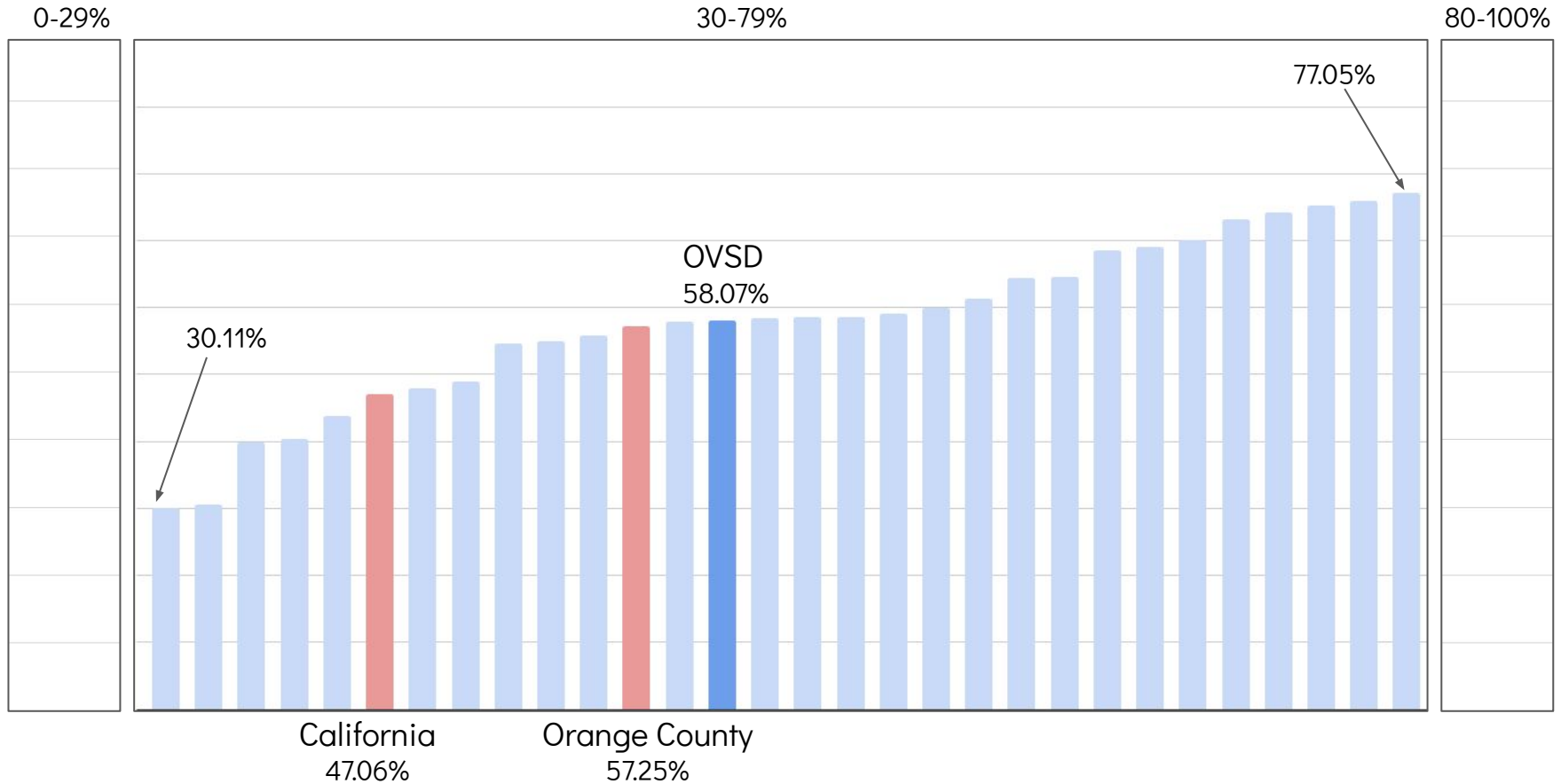
Mathematics

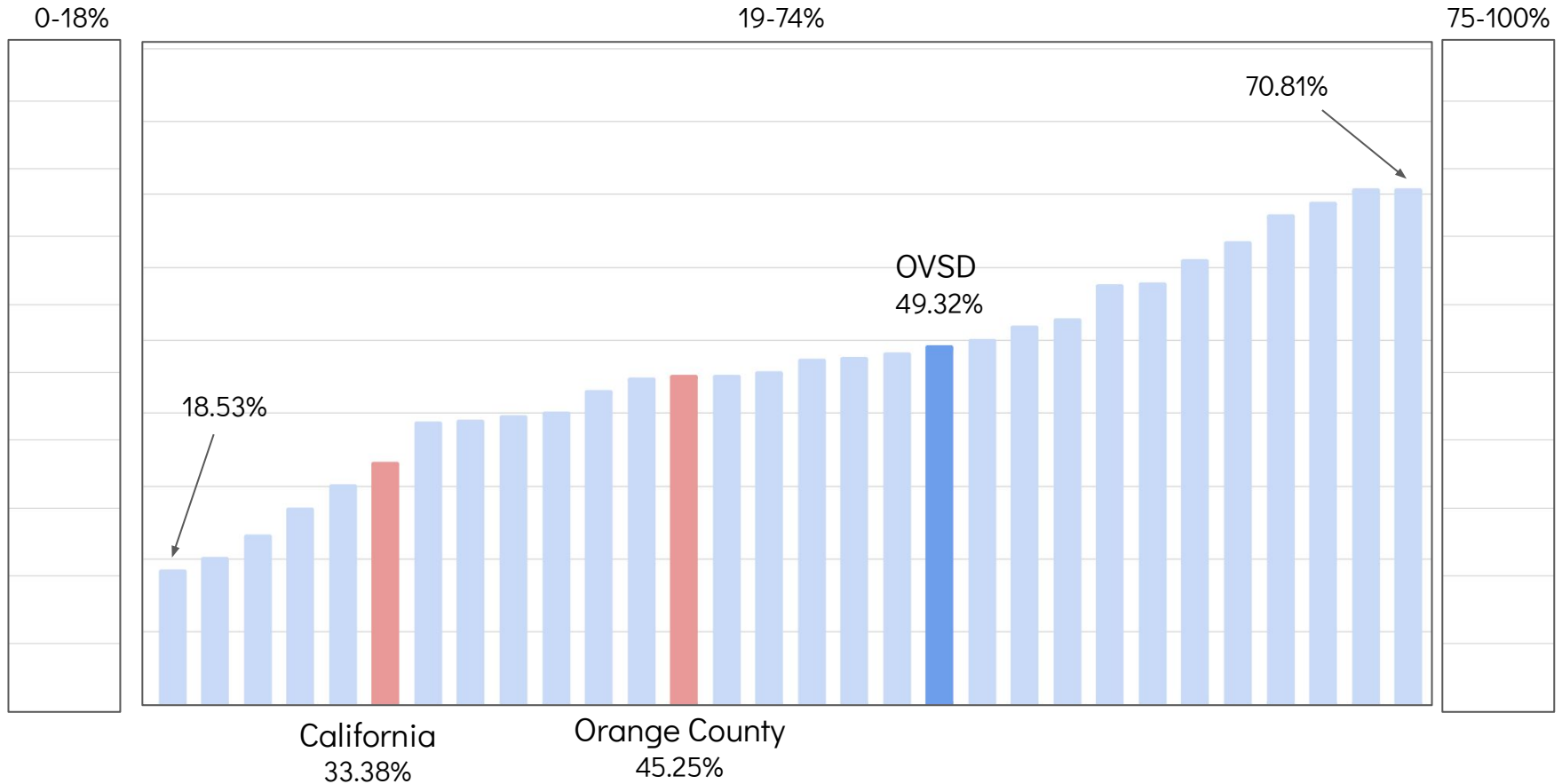
Percent of students within each achievement level



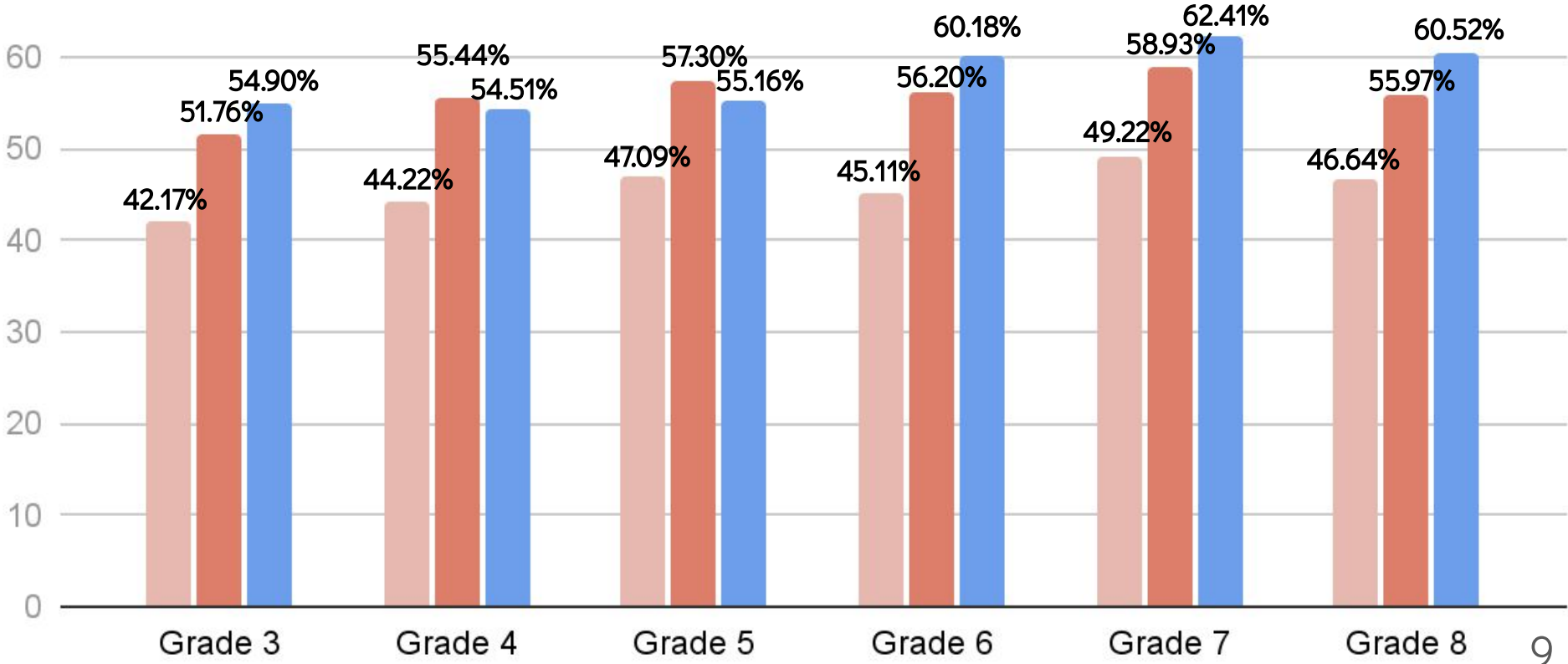
How does this compare to statewide & OC results?



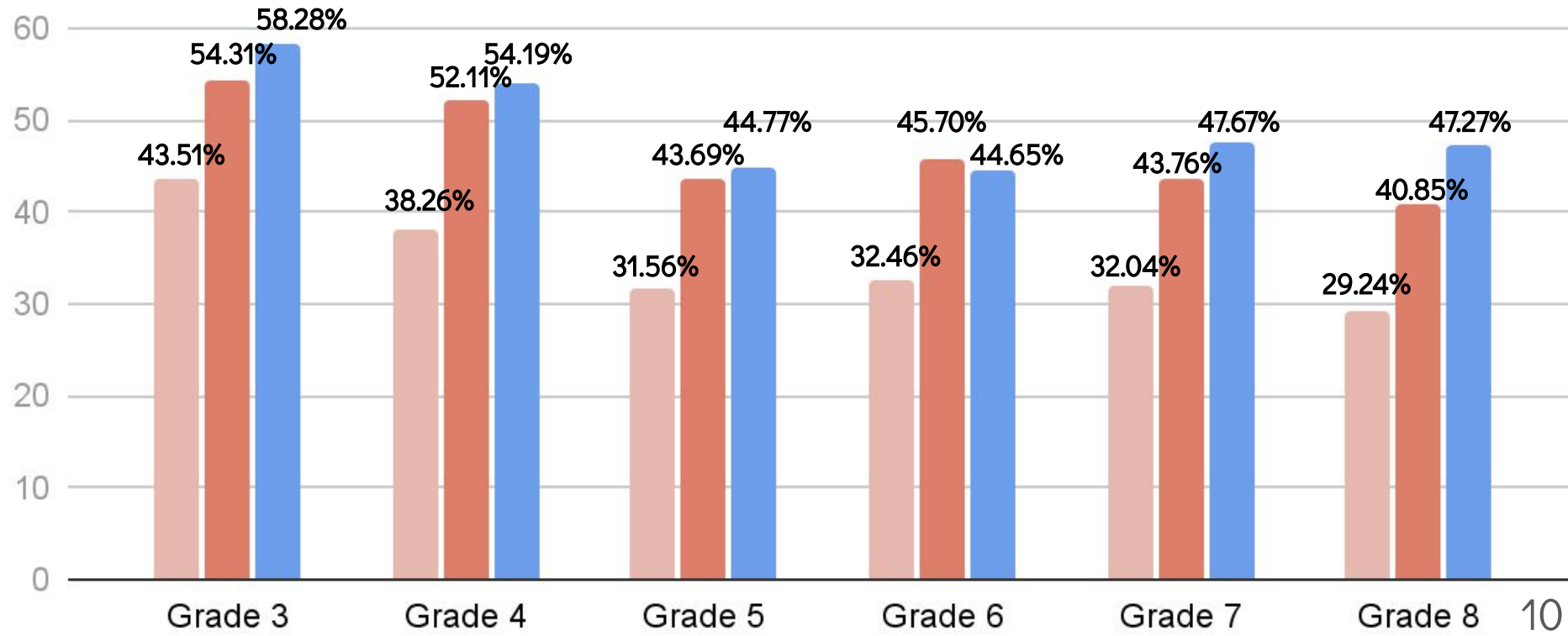




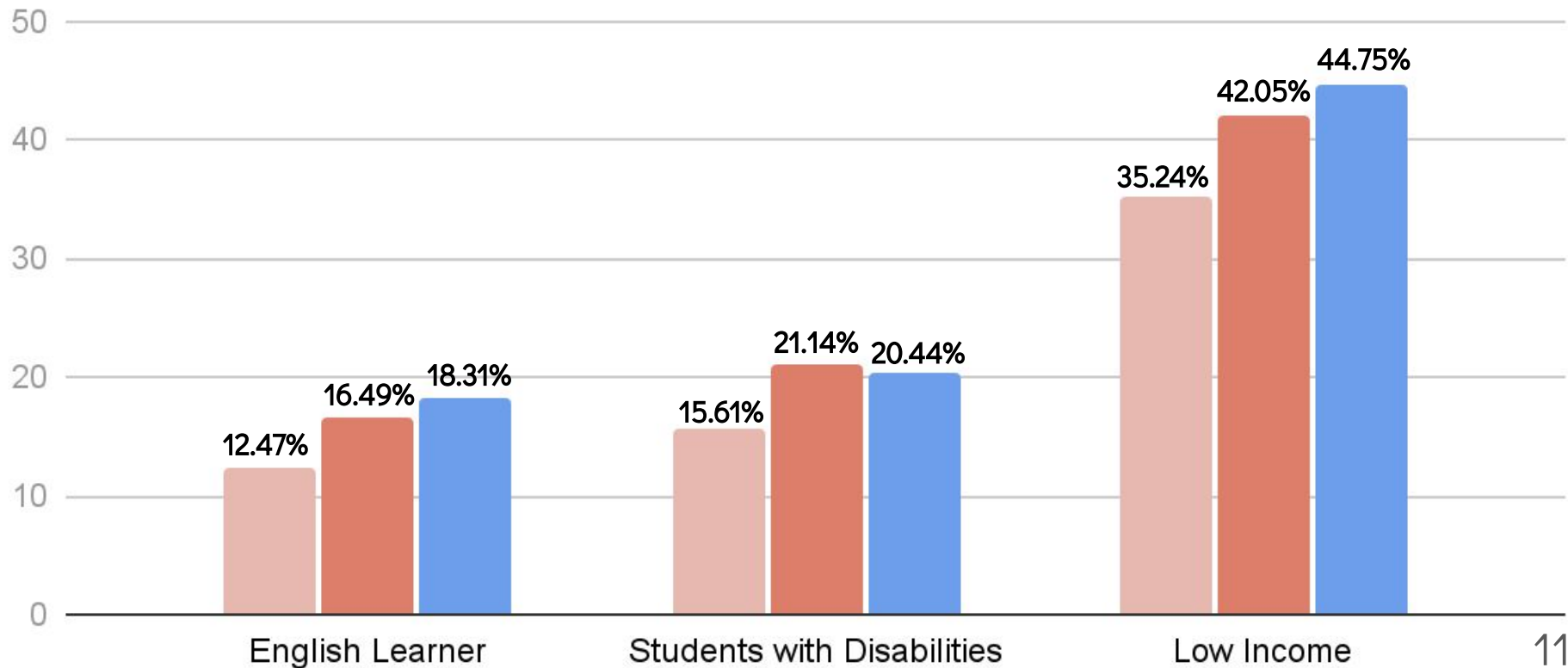
Percent Standard Met & Standard Exceeded California Orange County Ocean View



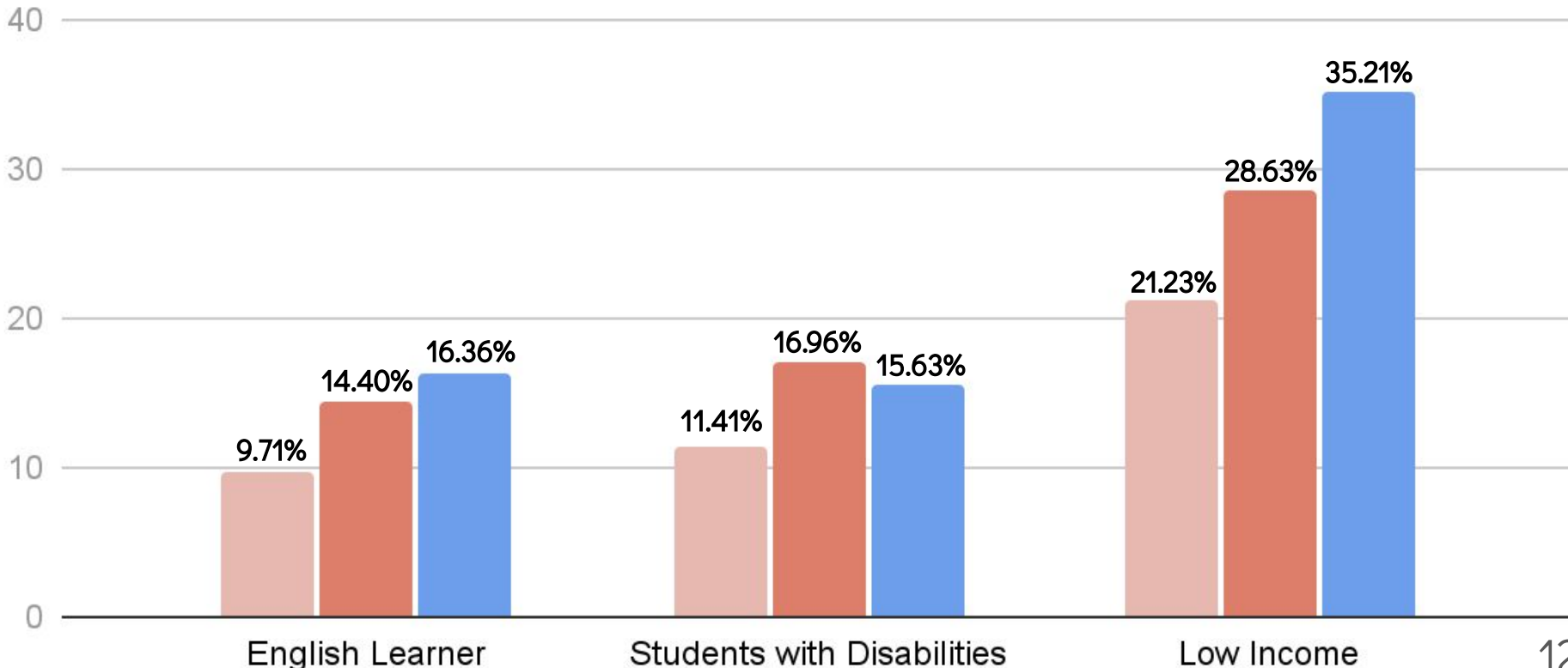
2021-22



Percent Standard Met & Standard Exceeded California Orange County Ocean View

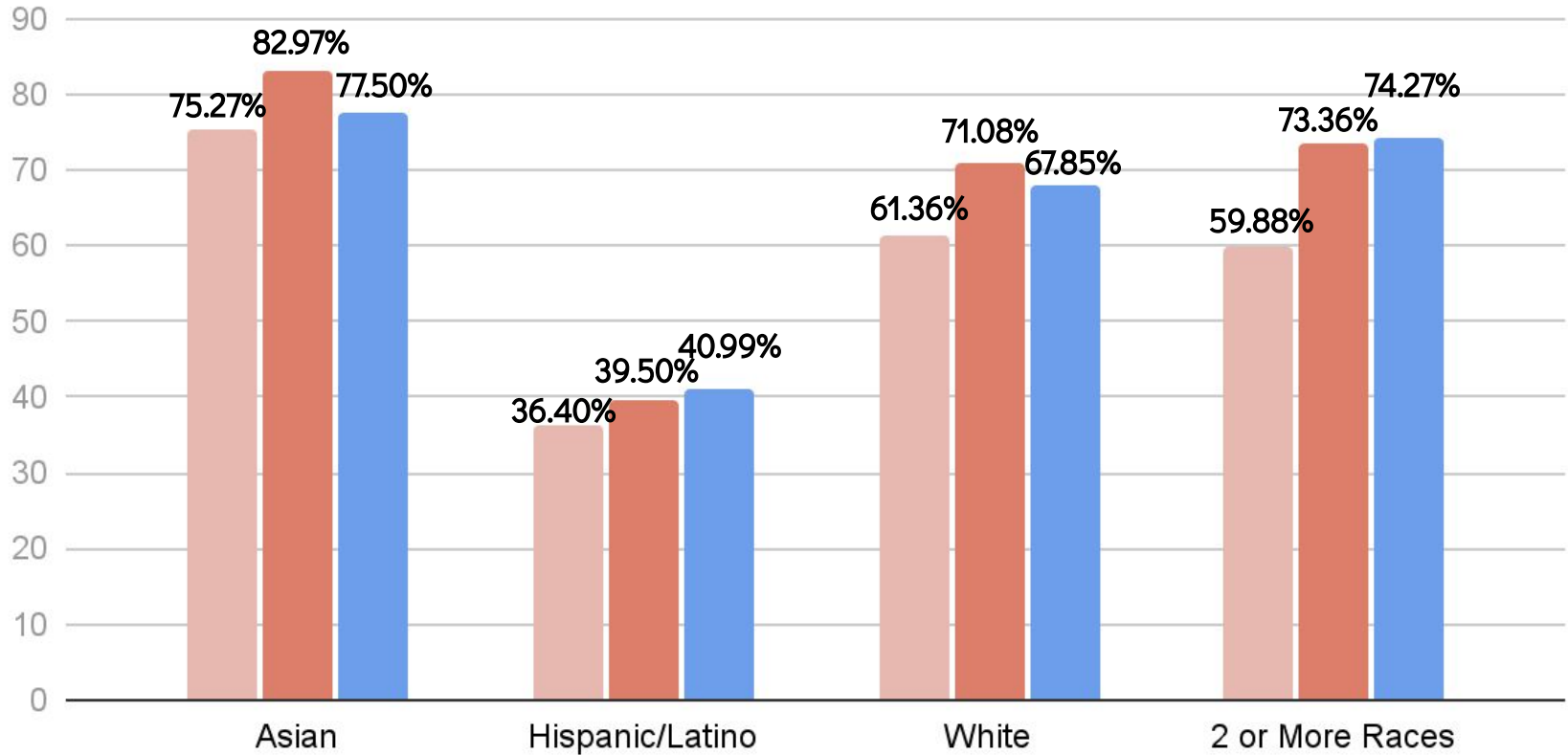


Percent Standard Met & Standard Exceeded California Orange County Ocean View

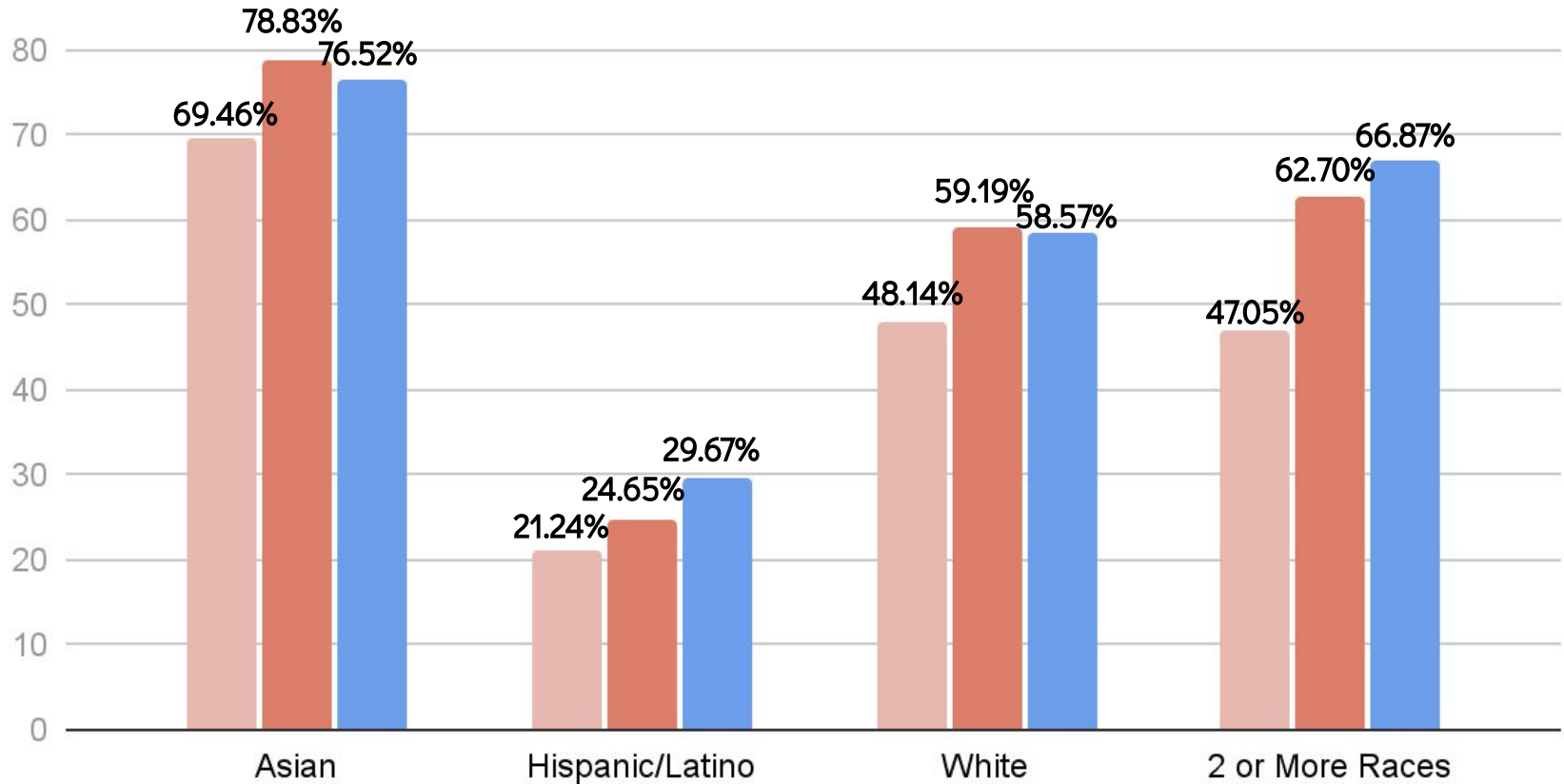


2021-22

Percent Standard Met & Standard Exceeded ■ California ■ Orange County ■ Ocean View



Percent Standard Met & Standard Exceeded ■ California ■ Orange County ■ Ocean View



2021/22 Smarter Balanced Assessments

The Smarter Balanced Assessments “Elephant” in the Room...

Did overall scores increase or decrease since the 2018-19 administration?

Decrease, the tests were structured differently (shorter for 2021-22) which makes them difficult to compare. Additional considerations include the fact that this was the first time third through fifth grade students took Smarter Balanced Assessments and the COVID pandemic radically changed how students were educated for two years.



How did OVSD compare to other schools in the area?

OVSD's overall scores were higher than Westminster and lower than Fountain Valley, Huntington Beach City, and Los Alamitos. Their scores were also lower than their 2018-19 results.

2021/22 Smarter Balanced Assessments

The Smarter Balanced Assessments “Elephant” in the Room...

Did overall scores increase or decrease since the 2018-19 administration?

Decrease, the tests were structured differently (shorter for 2021-22) which makes them difficult to compare. Additional considerations include the fact that this was the first time third through fifth grade students took Smarter Balanced Assessments and the COVID pandemic radically changed how students were educated for two years.



How did OVSD compare to other schools in the area?

OVSD’s overall scores were higher than Westminster and lower than Fountain Valley, Huntington Beach City, and Los Alamitos. Their scores were also lower than their 2018-19 results.

These “elephants” led the Educational Services Team to ask additional questions...

2021/22 Smarter Balanced Assessments

Have the demographics of students in OVSD changed more significantly than the surrounding districts particularly qualification for the Free and Reduced Lunch program?



OCEAN VIEW SCHOOL DISTRICT



*Connections
Before Content*

2021/22 Smarter Balanced Assessments

Free & Reduced Lunch Participation

District	2011-12	2021-22	10- Year Difference
California	57.5%	57.8%	+0.3%
Orange County	46.4%	46.5%	+0.1%

2021/22 Smarter Balanced Assessments

Free & Reduced Lunch Participation

District	2011-12	2021-22	10- Year Difference
California	57.5%	57.8%	+0.3%
Orange County	46.4%	46.5%	+0.1%
Fountain Valley	21.5%	22.8%	+1.3%
Huntington Beach City	17.2%	19.9%	+2.7%
Westminster	72.6%	75.4%	+2.8%
Los Alamitos Unified	12.2%	16.1% (lowest in OC)	+3.9%

2021/22 Smarter Balanced Assessments

Free & Reduced Lunch Participation

District	2011-12	2021-22	10- Year Difference
California	57.5%	57.8%	+0.3%
Orange County	46.4%	46.5%	+0.1%
Fountain Valley	21.5%	22.8%	+1.3%
Huntington Beach City	17.2%	19.9%	+2.7%
Westminster	72.6%	75.4%	+2.8%
Los Alamitos Unified	12.2%	16.1% (lowest in OC)	+3.9%
Ocean View	38.7%	57.0%	+18.3%

2021/22 Smarter Balanced Assessments

Free & Reduced Lunch Participation

District	2011-2012	2021-2022	10- Year Difference
Ocean View	38.7%	57.0%	+18.3%



It is clear that the OVSD student population has changed significantly over the past 10 years.

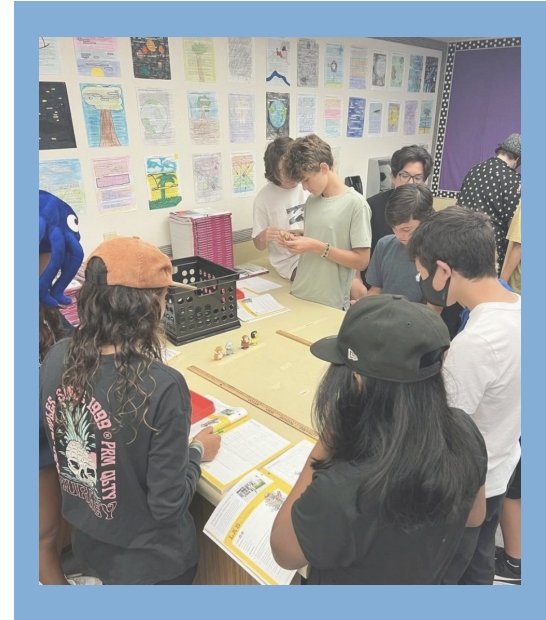
What percentage of OVSD teachers were present in the classrooms 10 years ago?



• 2021/22 Smarter Balanced Assessments

Teachers | Years of Service in OVSD

- 86% of OVSD teachers have been teaching for 11+ years
- 94% of OVSD General Ed teachers have been teaching for 11+ years
- 59% of OVSD General Ed teachers have been teaching for 21+ years
- 58% of OVSD Special Ed teachers have been teaching for less than 10 years



2021/22 Smarter Balanced Assessments

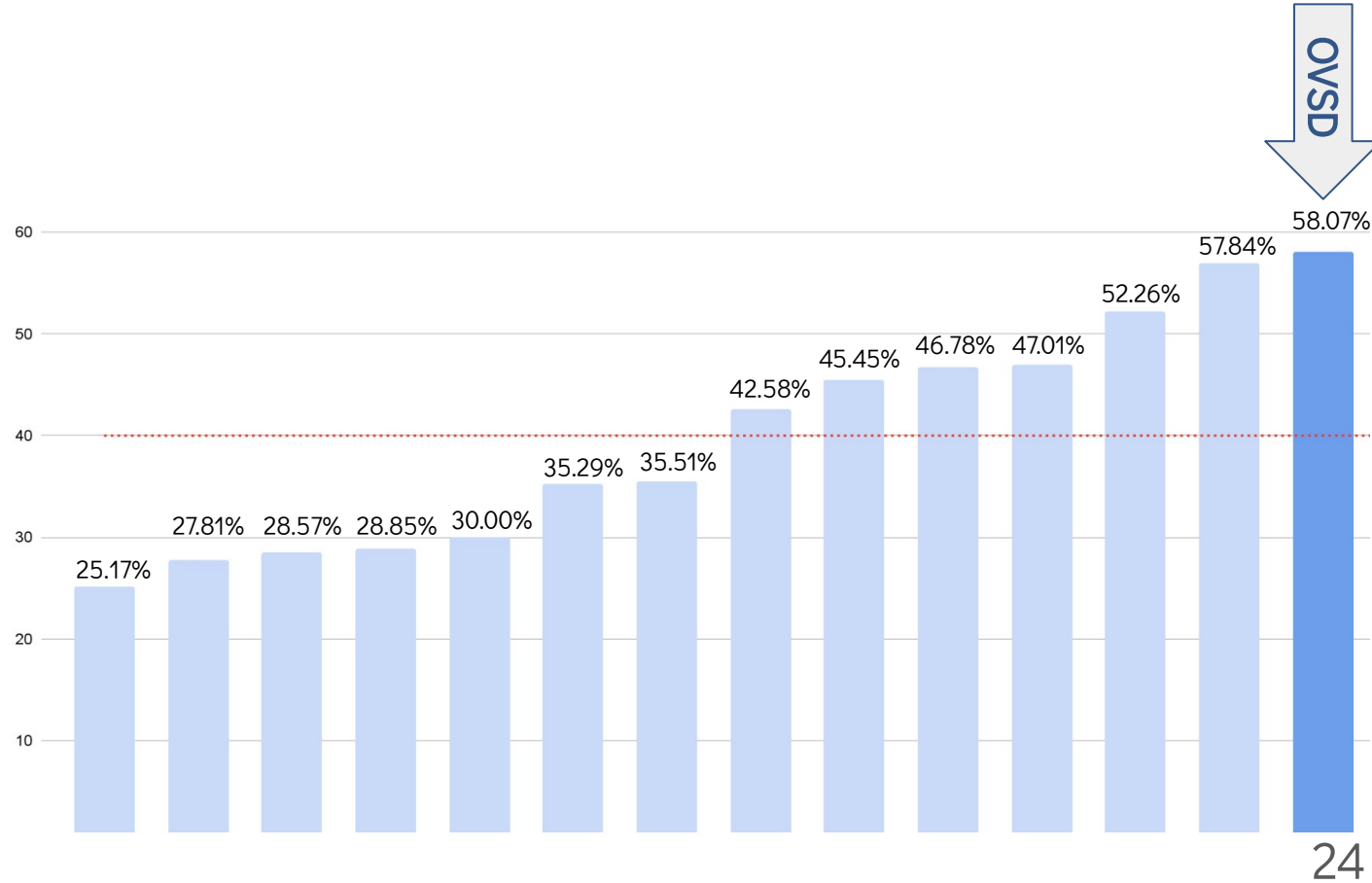
- OVSD's student population has changed significantly over the past 10 years.
- The majority of teachers (94%) were in OVSD classrooms prior to the shift in demographics.

How does OVSD compare to similar districts throughout California?



Similar CA Districts

Comparison of districts with similar rates of EL and Free & Reduced Lunch participation

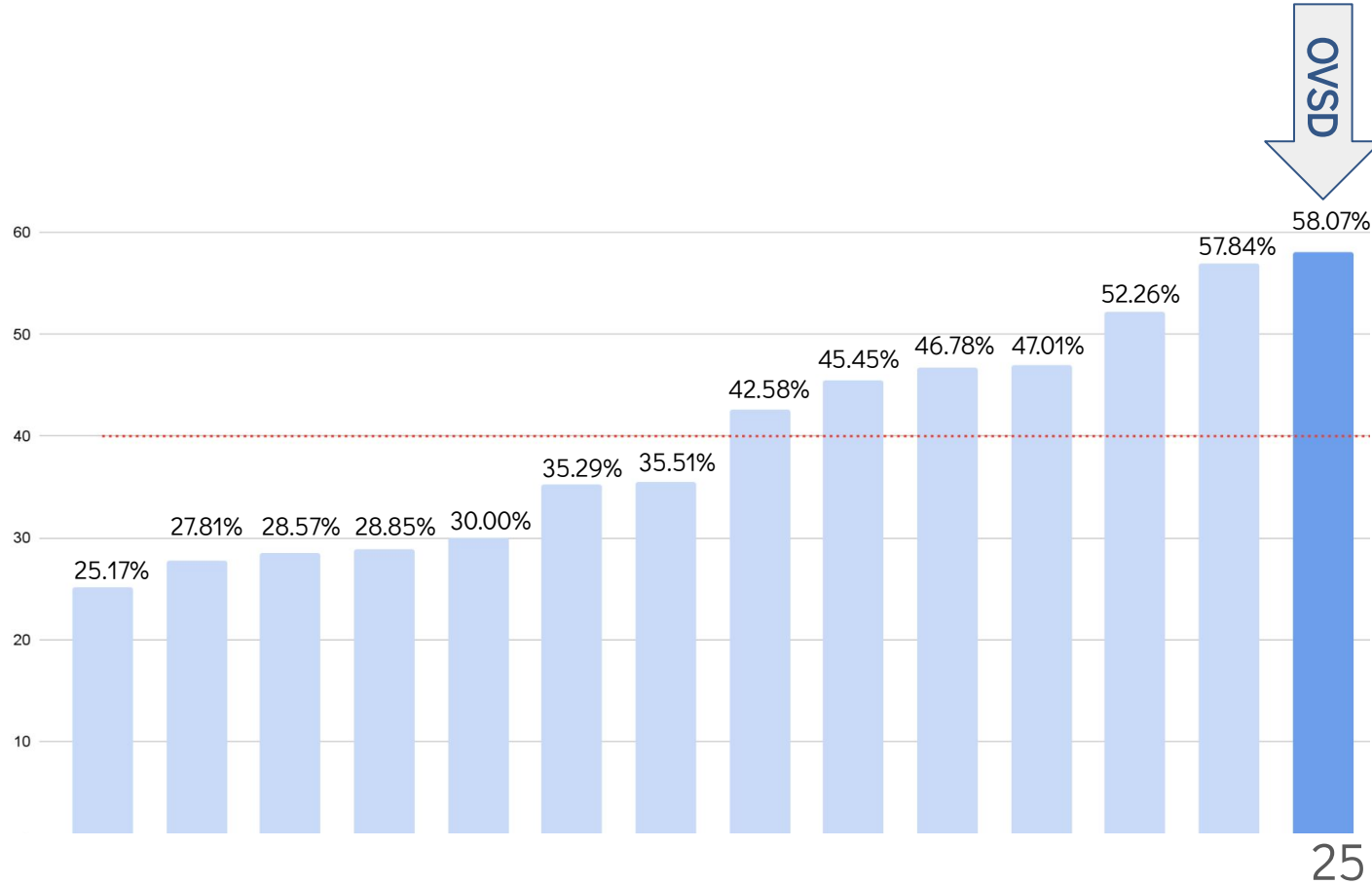


Similar CA Districts

Comparison of districts with similar rates of EL and Free & Reduced Lunch participation

SBA | ELA

OVSD scores 18% above the average score of similar districts

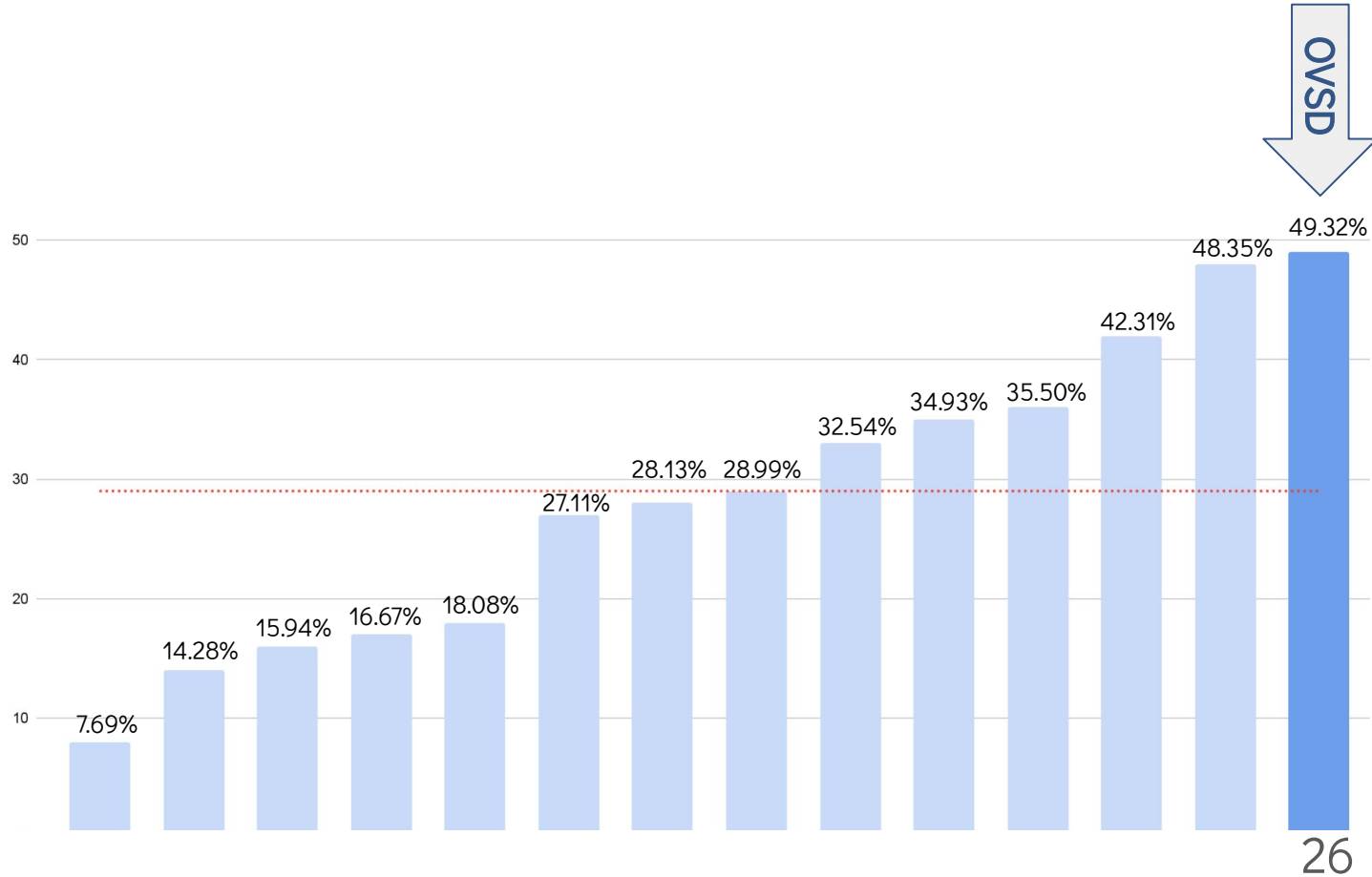


Similar CA Districts

Comparison of districts with similar rates of EL and Free & Reduced Lunch participation

SBA | Math

OVSD scores 20% above the average score of similar districts



• 2021/22 Smarter Balanced Assessments

“The goal is to turn data into information,
and information into insight.”

- OVSD’s student population has changed significantly over the past 10 years.
- The majority of OVSD teachers (94%) were in classrooms prior to the shift in demographics.
- OVSD consistently scores significantly higher than similar CA districts

ELA +18% above the average

Math +22% above the average

OCEAN VIEW SCHOOL DISTRICT



*Connections
Before Content*



Ways we Use Smarter Balanced Assessment Results

- Annual updates for the Local Control and Accountability Plan (LCAP) and School Plans for Student Achievement (SPSAs)
- Evaluate the effectiveness of our programs, initiatives, and use of State and federal funds
- Examine student group achievement, including English learners
- Identify areas to monitor and areas of focus
- Inform professional development for staff

Ways we Use Smarter Balanced Assessment Results

- Annual updates for the Local Control and Accountability Plan (LCAP) and School Plans for Student Achievement (SPSAs)
- Evaluate the effectiveness of our programs, initiatives, and State and federal funds
- Examine student group achievement, including English learners
- Identify areas to monitor and areas of focus
- Inform professional development for staff

What about guiding instruction?



Ways we Use Smarter Balanced Assessment Results



California Assessment of
Student Performance and Progress

+



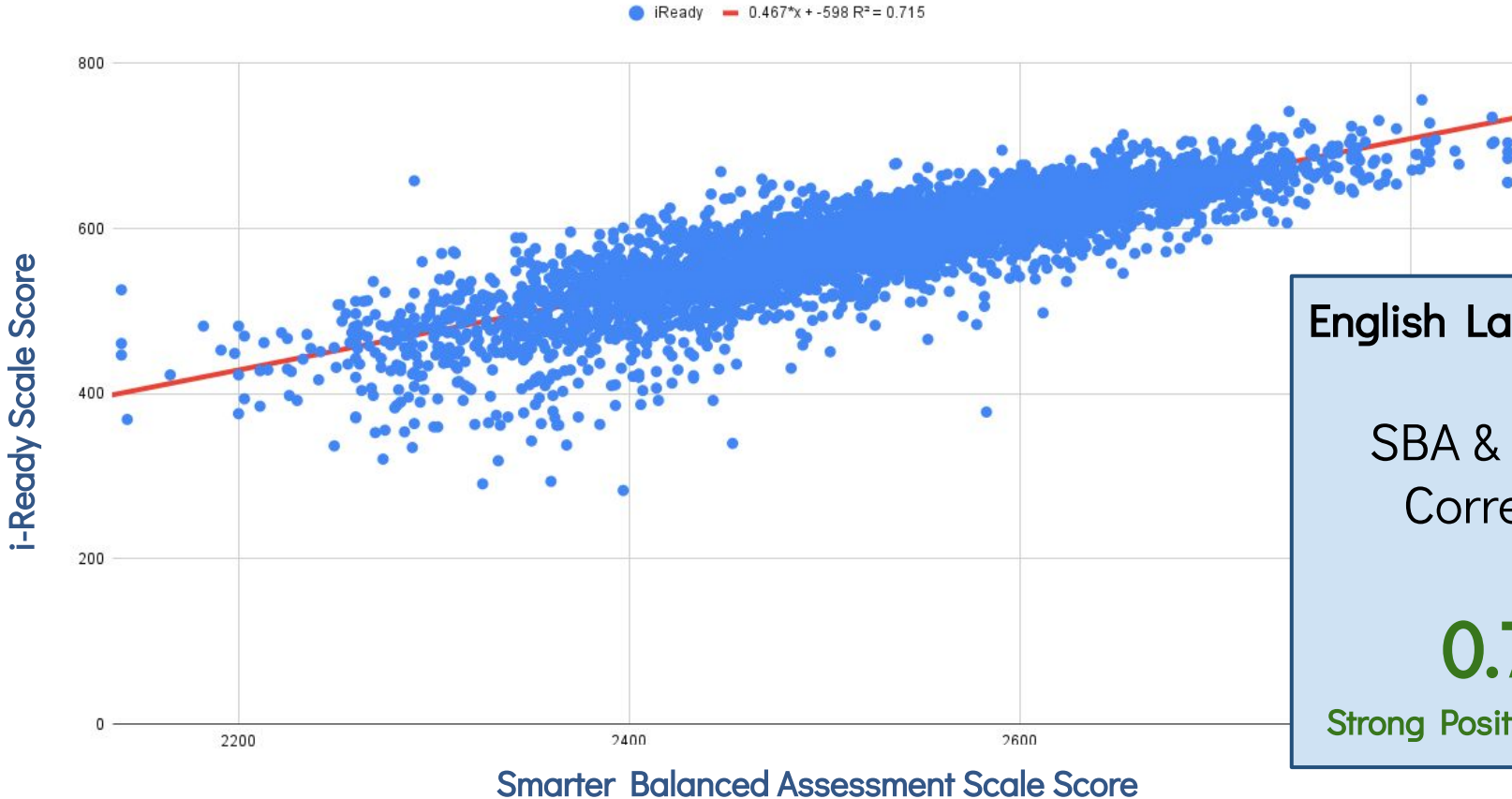
Correlation Coefficient (r)	Description (Rough Guideline)
+1.0	Perfect positive + association
+0.8 to 1.0	Very strong + association
+0.6 to 0.8	Strong + association
+0.4 to 0.6	Moderate + association
+0.2 to 0.4	Weak + association
0.0 to +0.2	Very weak + or no association
0.0 to -0.2	Very weak - or no association
-0.2 to -0.4	Weak - association
-0.4 to -0.6	Moderate - association
-0.6 to -0.8	Strong - association
-0.8 to -1.0	Very strong - association
-1.0	Perfect negative association

OCEAN VIEW SCHOOL DISTRICT



*Connections
Before Content*

OVSD Statistical Correlation



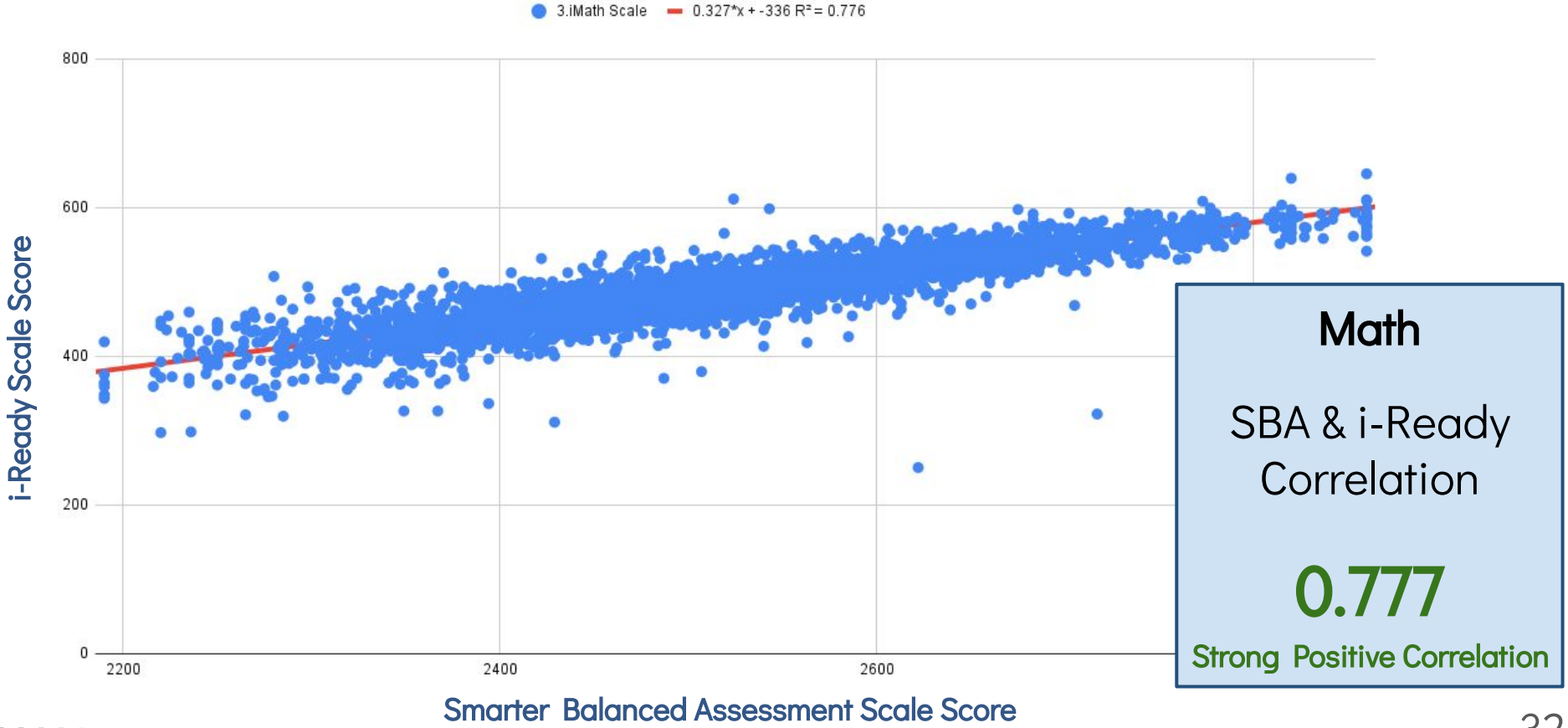
English Language Arts

SBA & i-Ready
Correlation

0.715

Strong Positive Correlation

OVSD Statistical Correlation



Smarter Balanced + i-Ready = Instruction

