

School Site Council Training: Analyzing and Planning for 2024-2025

February 27 & 29, 2024





Outcomes

- Connect [Dashboard Analysis](#) (January 2024) to retrospective activity to explore success of planned activities
- Understand how to monitor and evaluate SPSA activities
- Begin to determine effectiveness of actions in SY 2023-2024
- Map out next steps with educational partners in preparing for SY 2024-2025



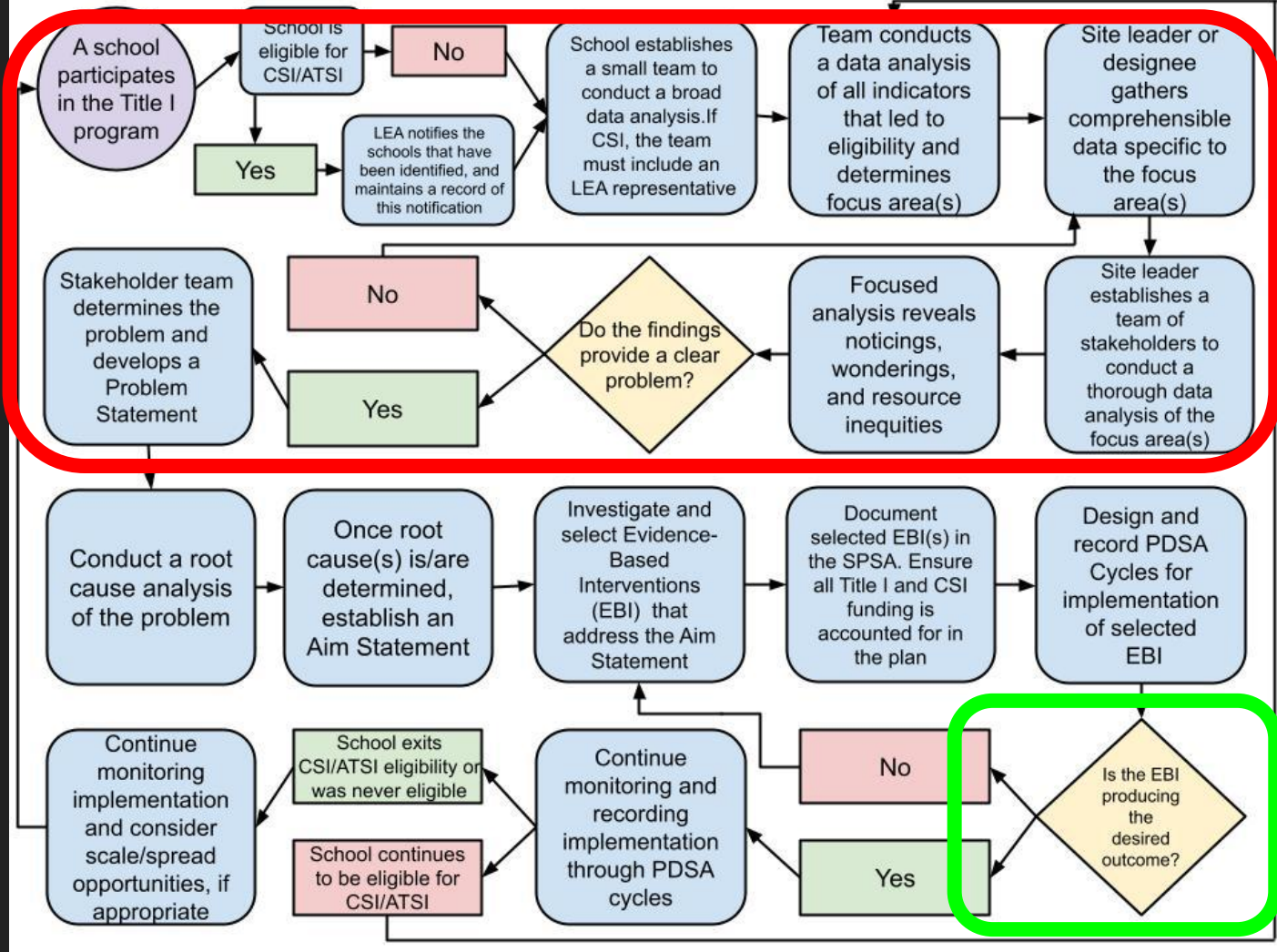
Resources (from January 2024)

- California Schools Dashboard ([PUSD Schools](#))
- [Schools Dashboard Additional Reports](#)
- [California Schools Dashboard Communications Toolkit](#)
 - 1-pagers
 - On Demand Dashboard Videos
 - Talking Points
- CDE Dashboard Analysis & SPSA Goals/Actions Reflection

The slide features a white background with decorative geometric elements in the corners. In the top-right corner, there is a cluster of three overlapping squares: a dark blue one, a light blue one, and an orange one. In the bottom-left corner, there is a cluster of three overlapping squares: a red one, a light blue one, and a dark blue one. The title "Planning for Improvement" is centered in the middle of the slide in a bold, black, sans-serif font.

Planning for Improvement

Using Improvement for Plan Development



The slide features a white background with decorative geometric elements in the corners. In the top-right corner, there is a cluster of three overlapping squares: a dark blue one, a light blue one, and an orange one. In the bottom-left corner, there is a cluster of three overlapping squares: a red one, a light blue one, and a dark blue one. The title 'Monitoring and Evaluation' is centered in the middle of the slide in a bold, black, sans-serif font.

Monitoring and Evaluation




Reflection Questions from Dashboard Analysis (January)

- **Areas of strength:** What are some of our strongest areas on the 2023 Dashboard?
- **Areas of opportunity:** What areas on the 2023 Dashboard can we improve upon?
- What other observations did we make? Are there additional questions that arose as a result of looking at the Dashboard?

Lessons Learned From Current SPSA Actions

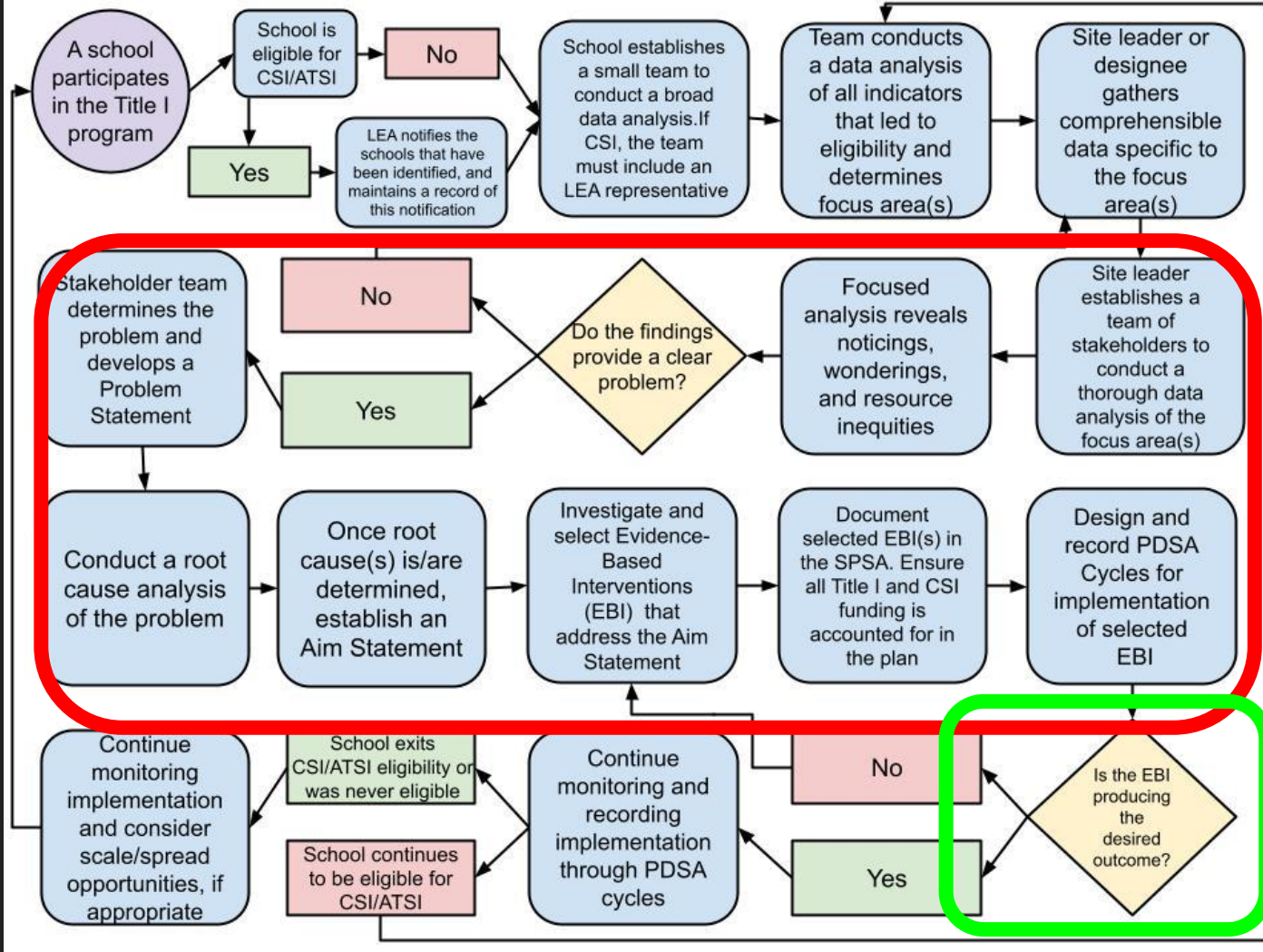
- What actions do we see in the upper left quadrant?
- Are there actions in the lower left quadrant? How might we modify these actions?
- Did we find any in the upper right quadrant?



The image features a white background with decorative geometric shapes in the corners. In the top right, there are three overlapping squares: a dark blue one, a light blue one, and an orange one. In the bottom left, there are three overlapping squares: a red one, a light blue one, and a dark blue one. The central text is bold and black.

Preparing for the 2024-2025 School Year

Using Improvement for Plan Development



SPSA Development for 2024-2025

- Explore identifying needs and identifying root causes with educational partner groups (teachers, staff, parents, students)
 - **Who are your Red Student Groups on 2023 Dashboard?**
- Specific actions for each of these groups in 2024-2025 SPSA
- Begin looking at evidence-based strategies to address needs

SPSA Monitoring & Evaluation

Annual Review

SPSA Year Reviewed: 2022-23

Respond to the following prompts relative to this goal. If the school is in the first year of implementing the goal, an analysis is not required and this section may be deleted.

ANALYSIS

Describe the overall implementation of the strategies/activities and the overall effectiveness of the strategies/activities to achieve the articulated goal.

Is it working?

We performed at an academic levels (ELA and Math) that shows a need to continue to support student needs through targeted interventions and small group instruction

Briefly describe any major differences between the intended implementation and/or the budgeted expenditures to implement the strategies/activities to meet the articulated goal.

Differences

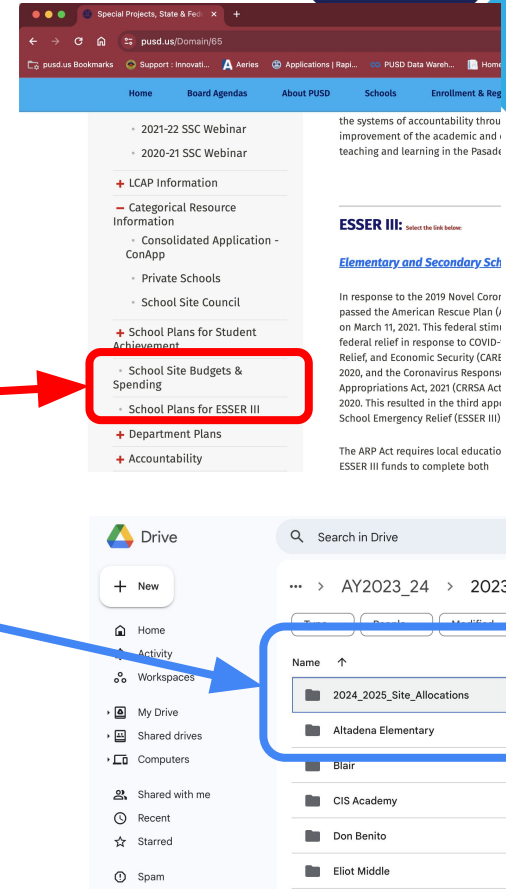
There were no substantive differences in planned actions and the actual implementation of those actions.

Describe any changes that will be made to this goal, the annual outcomes, metrics, or strategies/activities to achieve this goal as a result of this analysis. Identify where those changes can be found in the SPSA.

What changes will result?

2024-2025 School Allocations

- Where do I find initial budget allocations for the 2024-2025 school year?
 - Go to <https://www.pusd.us/Domain/65>
 - Select “School Site Budgets & Spending”
 - Will Open a Google Drive folder and you will select “2024_2025_Site_Allocations”



2024-2025 School Allocations (cont'd)

You will open a PDF entitled “2024-2025 Site allocations S&C and TI- Initial Allocation 2-7-24”

- (1) 24-25 LCFF S&C column has estimated allocation
- (2) Title I estimated Student Intervention allocation (second purple column)
- (3) Title I estimated Family Engagement allocation (third purple column)
- (4) Total school allocation



Estimated Allocations For Schools Sites (Title I, Part A and LCFF Funding)														
LCFF Funding			24-25 LCFF	S&C		Title I		Title I Eligibility		Title I Estimated Allocation		Title I Estimated Allocation		Total Site Allocation
School Name	Total Enrollment	# of Unduplicated Students	% of School Enrollment	LCFF S&C	LCFF S&C	LCFF S&C	LCFF S&C	LCFF S&C	LCFF S&C	LCFF S&C	LCFF S&C	LCFF S&C	LCFF S&C	LCFF S&C
Total	13,164	9,351	70%	\$1,765,750.00	—	13,164	9,351	—	—	\$1,765,750.00	\$4,361.00	\$1,765,750.00	—	\$1,765,750.00
Altadena Elementary	488	316	65%	\$56,880.00	—	488	316	—	—	\$56,880.00	\$1,354.00	\$56,880.00	—	\$56,880.00
Blair High	1,095	746	70%	\$134,380.00	—	1,095	746	—	—	\$134,380.00	\$2,875.00	\$134,380.00	—	\$134,380.00
Charles W. Elton Middle	395	326	83%	\$58,080.00	—	395	319	—	—	\$58,080.00	\$6,463.00	\$58,080.00	—	\$58,080.00
CS Academy	235	196	84%	\$25,380.00	—	235	179	—	—	\$25,380.00	\$784.00	\$25,380.00	—	\$25,380.00
Don Bertero Fundamental	398	238	60%	\$43,800.00	—	398	217	—	—	\$43,800.00	\$5,090.00	\$43,800.00	—	\$43,800.00
Ford (Eugene) Elementary	471	219	47%	\$28,420.00	—	471	214	—	—	\$28,420.00	\$650.00	\$28,420.00	—	\$28,420.00
Hamilton Elementary	504	274	54%	\$49,320.00	—	504	245	—	—	\$49,320.00	\$1,073.00	\$49,320.00	—	\$49,320.00
Jackson Elementary	634	431	68%	\$77,580.00	—	634	411	—	—	\$77,580.00	\$1,801.00	\$77,580.00	—	\$77,580.00
John Muir High	3,123	927	30%	\$106,860.00	—	3,123	927	—	—	\$106,860.00	\$2,333.00	\$106,860.00	—	\$106,860.00
Longfellow (Henry W.) Elementary	547	455	83%	\$81,900.00	—	547	434	—	—	\$81,900.00	\$1,903.00	\$81,900.00	—	\$81,900.00
Madison Elementary	439	396	90%	\$73,380.00	—	439	366	—	—	\$73,380.00	\$9,546.00	\$73,380.00	—	\$73,380.00
Marshall Fundamental	1,448	1,016	70%	\$124,480.00	—	1,448	1,023	—	—	\$124,480.00	\$1,413.00	\$124,480.00	—	\$124,480.00
McKinley	616	336	54%	\$66,480.00	—	616	305	—	—	\$66,480.00	\$2,313.00	\$66,480.00	—	\$66,480.00
Norma Condon Elementary	334	241	72%	\$43,380.00	—	334	226	—	—	\$43,380.00	\$990.00	\$43,380.00	—	\$43,380.00
Presidents High	1,355	977	72%	\$178,580.00	—	1,355	900	—	—	\$178,580.00	\$1,343.00	\$178,580.00	—	\$178,580.00
Rose City High (Continuation)	165	158	96%	\$28,480.00	—	165	127	—	—	\$28,480.00	\$556.00	\$28,480.00	—	\$28,480.00
San Rafael Elementary	365	165	45%	\$29,480.00	—	365	153	—	—	\$29,480.00	\$670.00	\$29,480.00	—	\$29,480.00
Serra Madre Elementary	618	223	36%	\$40,140.00	—	618	217	—	—	\$40,140.00	\$951.00	\$40,140.00	—	\$40,140.00
Serra Madre Middle	593	274	46%	\$49,380.00	—	593	279	—	—	\$49,380.00	\$1,286.00	\$49,380.00	—	\$49,380.00
Washington Elementary	433	407	94%	\$73,380.00	—	433	400	—	—	\$73,380.00	\$973.00	\$73,380.00	—	\$73,380.00
Octavia E. Butler Magnet	519	436	84%	\$78,480.00	—	519	428	—	—	\$78,480.00	\$973.00	\$78,480.00	—	\$78,480.00
Webster Elementary	294	237	81%	\$42,480.00	—	294	272	—	—	\$42,480.00	\$955.00	\$42,480.00	—	\$42,480.00
Willard Elementary	417	327	78%	\$58,860.00	—	417	306	—	—	\$58,860.00	\$1,341.00	\$58,860.00	—	\$58,860.00

2024-2025 School Allocations (cont'd)

You will open a PDF entitled “2024-2025 Site allocations S&C and TI- Initial Allocation 2-7-24”

- Orange= how funds are determined
- Brown= amount of S&C estimated to receive
- Blue = how Title I is determined
- Purple= how Title I funds are distributed
- Green= Total site directed funds

Estimated Allocations For Schools Sites (Title I, Part A and LCFF Funding)														
LCFF Funding			24-25 LCFF	Title I		Title I		Title I		Title I		Title I		Total Site Directed Funding
School Name	Total Enrollment	% of Unduplicated Students	% of School Enrollment	Enrollment	Age Eligible	Enrollment	% of School Enrollment	Enrollment	Age Eligible	Enrollment	% of School Enrollment	Enrollment	Age Eligible	Total Site Directed Funding
Total	13,654	9,511	70%	\$1,765,780.00	—	13,612	9,449	69.8%	—	13,649,225.00	\$4,361.00	1,149,576.00	—	Total
Altadena Elementary	488	316	65%	\$56,880.00	Enr	488	309	63.32%	Eligible	\$264.66	\$75,000.00	\$1,354.00	\$76,950.00	\$264.66
Blair High	1,095	746	70%	\$134,380.00	Sec	1,033	679	64.36%	Eligible	\$119.14	\$80,880.00	\$2,875.00	\$83,871.00	\$123.12
Charles W. Elton Middle	395	326	83%	\$58,080.00	Md	395	319	80.76%	Required	\$203.96	\$65,460.00	\$1,388.00	\$66,460.00	\$203.96
CS Academy	235	196	83%	\$25,380.00	Sec	217	179	76.17%	Required	\$119.14	\$12,326.00	\$784.00	\$12,310.00	\$123.12
Don Bertero Fundamentals	398	238	60%	\$42,840.00	Enr	368	217	54.52%	Eligible	\$264.66	\$52,080.00	\$951.00	\$54,060.00	\$264.66
Field (Eugene) Elementary	471	219	47%	\$26,430.00	Enr	456	194	41.19%	Eligible	\$264.66	\$47,464.00	\$650.00	\$48,314.00	\$264.66
Hamilton Elementary	504	274	54%	\$49,320.00	Enr	481	245	48.61%	Eligible	\$264.66	\$59,840.00	\$1,073.00	\$61,053.00	\$264.66
Jackson Elementary	634	431	68%	\$77,380.00	Enr	634	411	64.83%	Eligible	\$264.66	\$100,550.00	\$1,801.00	\$102,356.00	\$264.66
John Muir High	1,133	927	82%	\$166,860.00	Sec	1,087	892	78.73%	Required	\$264.66	\$128,237.00	\$3,908.00	\$132,345.00	\$264.66
Longfellow (Henry W.) Elementary	547	455	83%	\$81,900.00	Enr	510	434	79.34%	Required	\$264.66	\$100,580.00	\$1,903.00	\$102,086.00	\$264.66
Madison Elementary	409	396	97%	\$73,380.00	Enr	389	386	99.49%	Required	\$264.66	\$99,546.00	\$1,004.00	\$99,150.00	\$264.66
Marshall Fundamentals	1,408	1416	101%	\$214,800.00	Sec	1,803	1,402	77.87%	Required	\$119.14	\$127,034.00	\$5,143.00	\$173,377.00	\$123.12
McKinley	516	136	26%	\$96,480.00	Enr	395	305	77.18%	Required	\$264.66	\$123,510.00	\$2,213.00	\$125,766.00	\$264.66
Norma Counts Elementary	134	141	70%	\$43,380.00	Enr	296	226	67.68%	Eligible	\$264.66	\$15,290.00	\$990.00	\$16,280.00	\$264.66
Presidents High	1,355	977	70%	\$175,380.00	Sec	1,312	890	70.11%	Eligible	\$119.14	\$123,580.00	\$4,163.00	\$127,346.00	\$123.12
Rose City High (Continuation)	165	158	96%	\$28,430.00	Sec	154	127	76.67%	Required	\$119.14	\$13,130.00	\$556.00	\$13,687.00	\$123.12
San Rafael Elementary	393	165	42%	\$29,430.00	Enr	393	153	38.93%	Eligible	\$264.66	\$27,470.00	\$670.00	\$28,380.00	\$264.66
Sierra Madre Elementary	618	223	36%	\$40,380.00	Enr	618	217	35.11%	Eligible	\$264.66	\$13,095.00	\$951.00	\$14,046.00	\$264.66
Sierra Madre Middle	593	274	46%	\$49,320.00	Md	569	278	48.69%	Eligible	\$264.66	\$59,840.00	\$1,073.00	\$60,871.00	\$264.66
Washington Elementary	433	407	94%	\$75,380.00	Enr	420	380	90.47%	Required	\$264.66	\$99,417.00	\$1,709.00	\$97,118.00	\$264.66
Octavia E. Butler Magnet	519	436	84%	\$78,480.00	Md	519	428	82.47%	Required	\$264.66	\$128,237.00	\$3,908.00	\$98,176.00	\$264.66
Webster Elementary	294	237	81%	\$42,840.00	Enr	272	228	74.15%	Eligible	\$264.66	\$52,080.00	\$951.00	\$54,291.00	\$264.66
Willard Elementary	417	327	79%	\$58,860.00	Enr	390	306	78.58%	Eligible	\$264.66	\$78,860.00	\$1,341.00	\$79,207.00	\$264.66

Current Work & Looking Ahead

	January-February	March	April	May	June
SPSA Development, Continuous Improvement Process	Analyze CA Dashboard data Preliminary budget allocations for SY24-25 Conduct Needs Assessment	Begin to identify needs for SY24-25 Begin drafting SPSA (metrics, strategies/actions)	Examine, Reflect, Adjust Input, Update on SPSA Development	Finalize Plan and get SSC approval	Plans presented for



Reminders

- **School Site Council Training**
 - March 14 (5:00pm) and March 19 (6:00pm)
 - Topics
 - Examining Needs Assessment
 - Building SPSA

The image features a white background with decorative geometric shapes in the corners. In the top-right corner, there is a cluster of three overlapping squares: a dark blue one, a light blue one, and a yellow one. In the bottom-left corner, there is a cluster of three overlapping squares: a red one, a light blue one, and a dark blue one. The text "Thank you!" is centered in the middle of the page.

Thank you!