

# Facilities, Planning and Construction

## April 22, 2024



# Construction & Planning Update:

## Construction

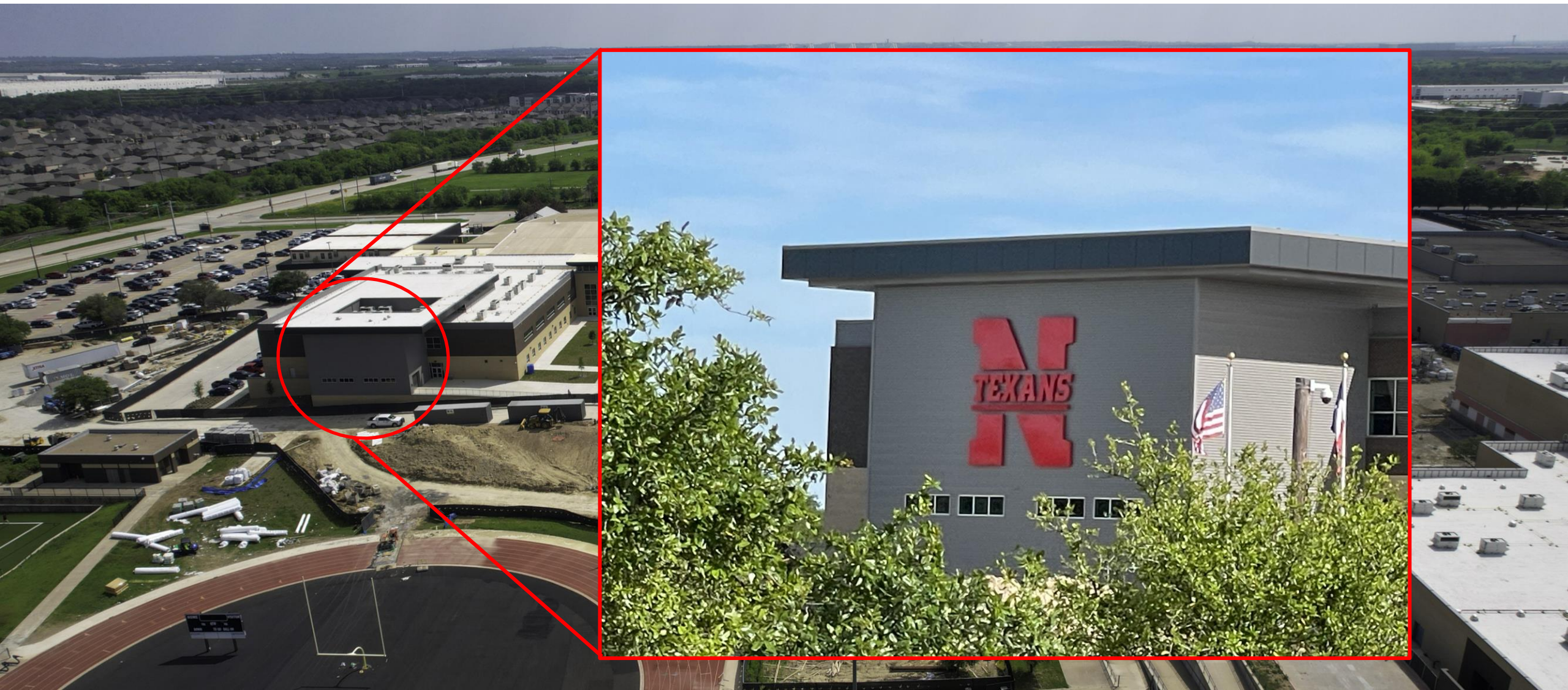
- Northwest HS – Renovations & Additions
- Pike Replacement Middle School
- Perrin Elementary School #23
- New NISD Administration Building

## Planning

- Early Childhood Center
- Middle School #8
- Comprehensive High School #4



# Northwest HS – Renovations & Additions







04/08/2024



[www.nisdtx.org](http://www.nisdtx.org)









04/08/2024













# Remaining Construction Schedule:

## **Through remaining school year:**

- Continue on West Side Administration Suite, Arena, New Athletics Areas, New Library, and North Side of 600 Hallway Classroom Renovations.

## **Summer 2024:**

- Continue on all above, Fine Arts Classrooms Renovations, 800 & 900 Hallway and Special Education Classroom Renovations.

## **Start of 2024-2025 School Year:**

- Turn over Fine Arts Classrooms, New Library, 800 & 900 Hallway and Special Educations Classrooms.  
Continue on West Side Administration Suite, Arena and New Athletics Areas.

## **January 2025 through May 2025:**

- Turn over West Side Administration Suite and New West Side Entry, Arena and New Athletics Areas.  
Take over remaining existing Athletics Areas and remaining East Academics Classrooms for renovations.

## **Summer 2025:**

- Turn over Renovated Athletics Areas and East Academics Classrooms & New Cosmetology Area.

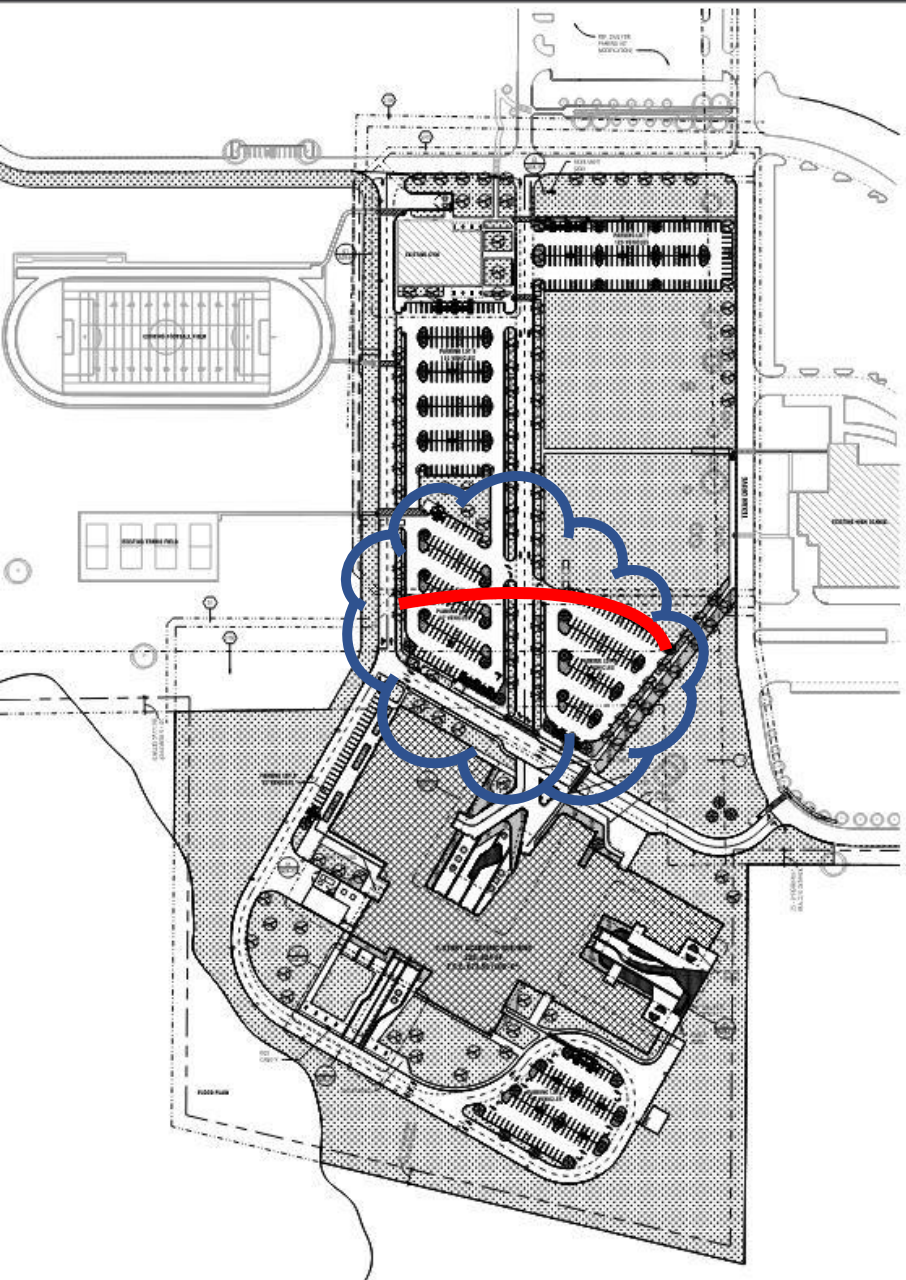


# Pike Replacement Middle School



04/08/2024















































# Perrin Elementary School #23

































# New NISD Administration Building









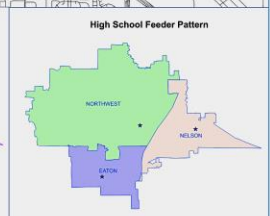
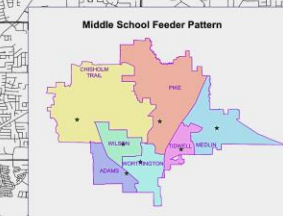
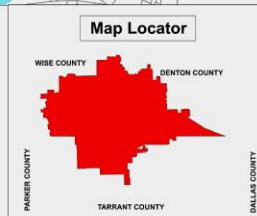
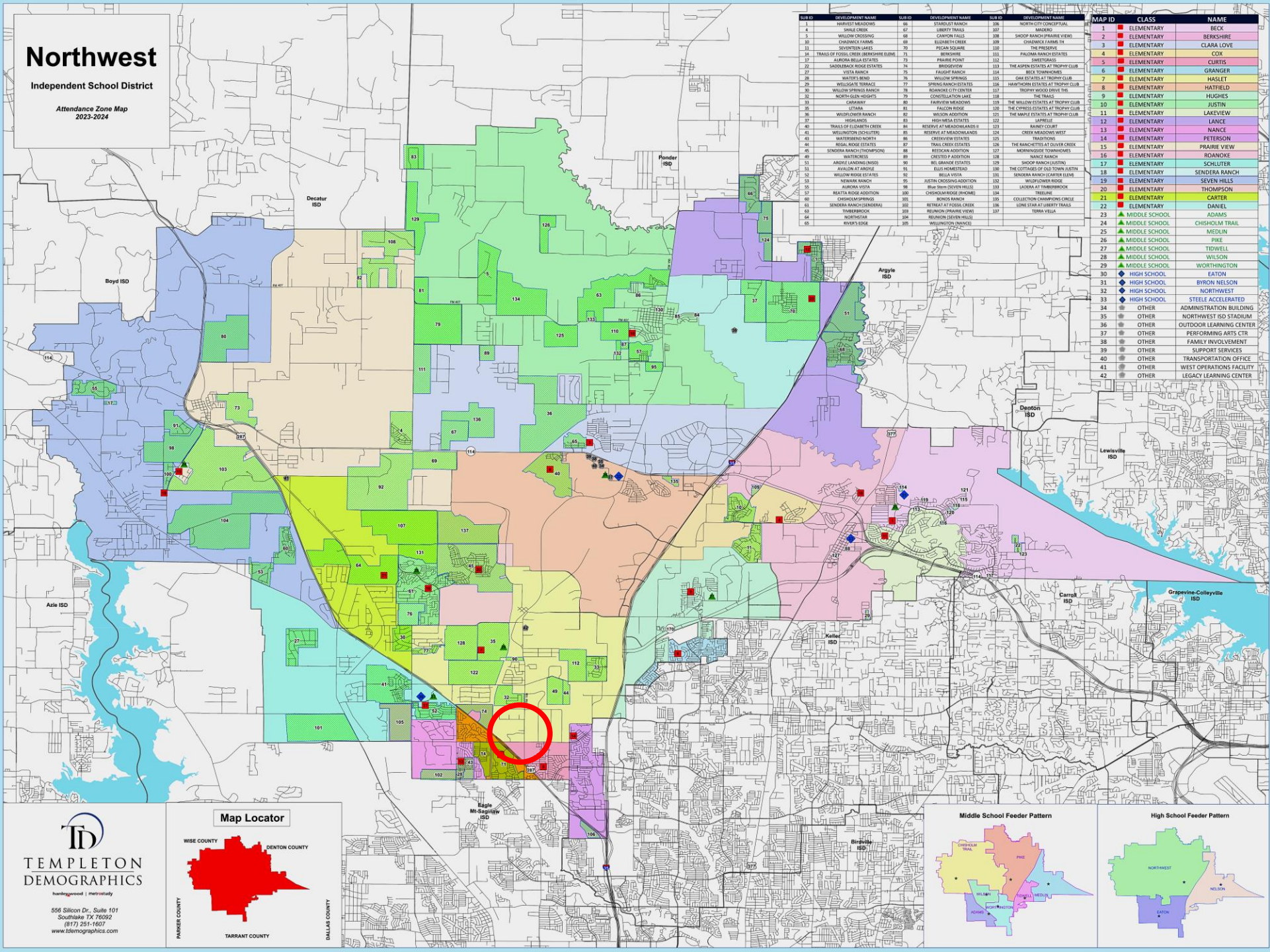
# **Northwest ISD**

## **Early Childhood Centers**

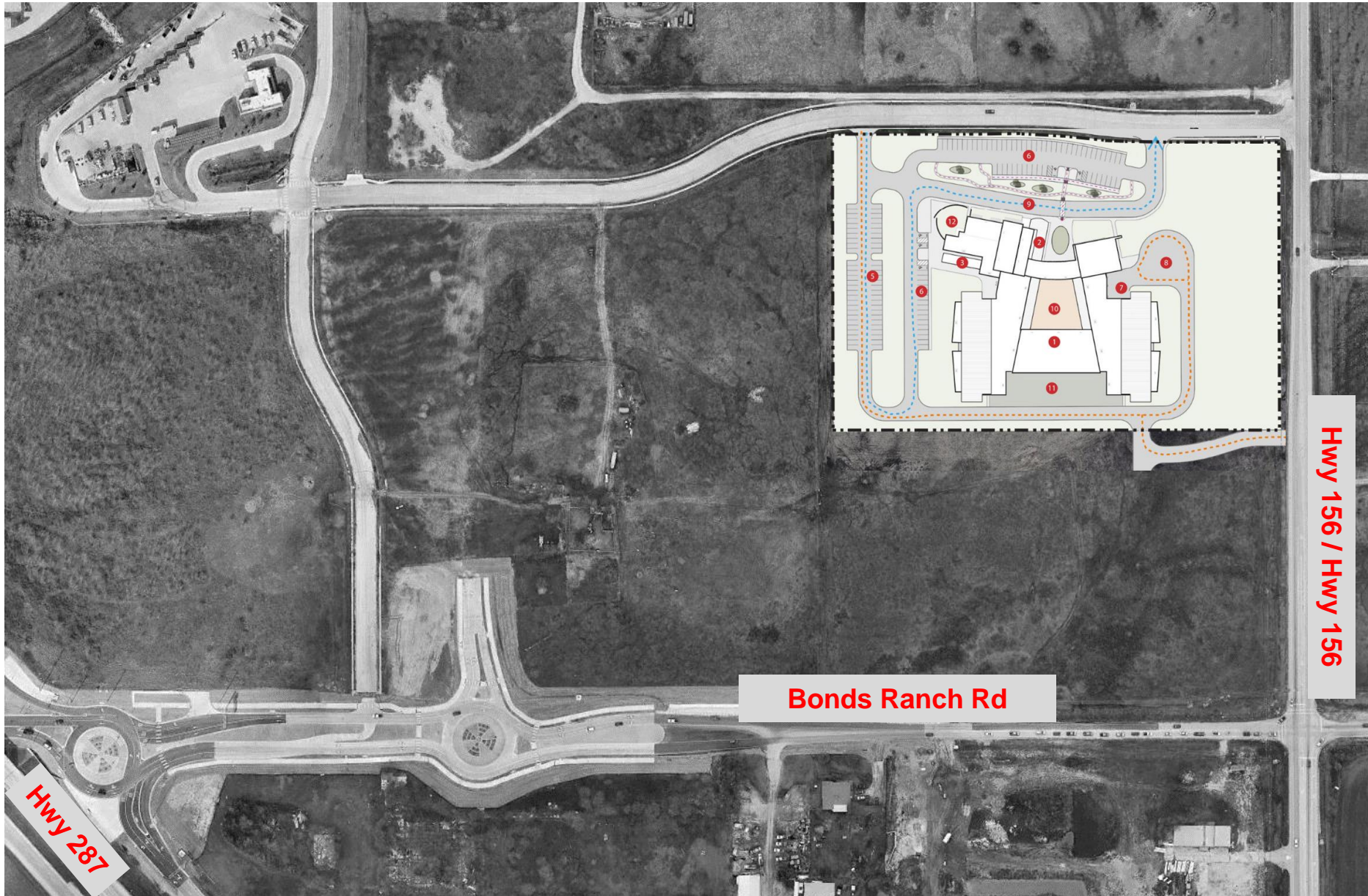


## Independent School District

MAP ID	CLASS	NAME
1	1 ELEMENTARY	BECK
2	1 ELEMENTARY	BERKSHIRE
3	1 ELEMENTARY	CLARA LOVE
4	1 ELEMENTARY	COX
5	1 ELEMENTARY	CURTIS
6	1 ELEMENTARY	GRANGER
7	1 ELEMENTARY	HASLET
8	1 ELEMENTARY	HATFIELD
9	1 ELEMENTARY	HUGHES
10	1 ELEMENTARY	JUSTIN
11	1 ELEMENTARY	LAKELAND
12	1 ELEMENTARY	LANCE
13	1 ELEMENTARY	NANCE
14	1 ELEMENTARY	PETERSON
15	1 ELEMENTARY	PRAIRIE VIEW
16	1 ELEMENTARY	ROANKE
17	1 ELEMENTARY	SCOTTET
18	1 ELEMENTARY	SENDERA RANCH
19	1 ELEMENTARY	SEVEN HILLS
20	1 ELEMENTARY	THOMPSON
21	1 ELEMENTARY	CARTER
22	1 ELEMENTARY	ADAMS
23	2 MIDDLE SCHOOL	CHISHOLM TRAIL
24	2 MIDDLE SCHOOL	MEDLIN
25	2 MIDDLE SCHOOL	PIKE
26	2 MIDDLE SCHOOL	TIDWELL
27	2 MIDDLE SCHOOL	YOUNG
28	2 MIDDLE SCHOOL	WORTHINGTON
29	3 HIGH SCHOOL	EATON
30	3 HIGH SCHOOL	BYRON NELSON
31	3 HIGH SCHOOL	NORTHWEST
32	3 HIGH SCHOOL	STEELE CRESTATED
33	3 HIGH SCHOOL	ADMINISTRATION BUILDING
34	OTHER	NORTHWEST DQ STADIUM
35	OTHER	OUTDOOR LEARNING CTR
36	OTHER	PERFORMING ARTS CTR
37	OTHER	FAMILY INVOLVEMENT
38	OTHER	SUMMER SERVICES
39	OTHER	TRANSPORTATION OFFICE
40	OTHER	WEST OPERATIONS FACILITY
41	OTHER	LEGACY LEARNING CENTER







#### LINE TYPE LEGEND

- New Building
- Demo Building
- Property Line
- Parent Drop-off
- Bus Drop-off
- Pedestrian

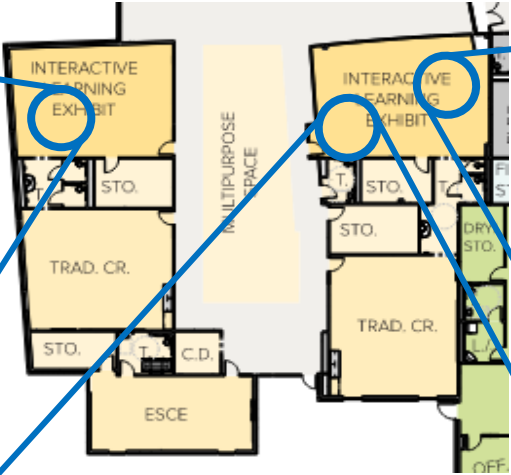
- 1 NEW EARLY CHILDHOOD CENTER
- 2 ECC STUDENT ENTRY
- 3 DAYCARE ENTRY
- 4 PARENT & BUS SITE ENTRY
- 5 TEACHER PARKING
- 6 VISITOR PARKING
- 7 SERVICE YARD PARKING
- 8 BUS DROP-OFF LOOP
- 9 PARENT DROP-OFF LOOP
- 10 COURTYARD
- 11 ECC OUTDOOR PLAYSPACE
- 12 DAYCARE OUTDOOR PLAYSPACE



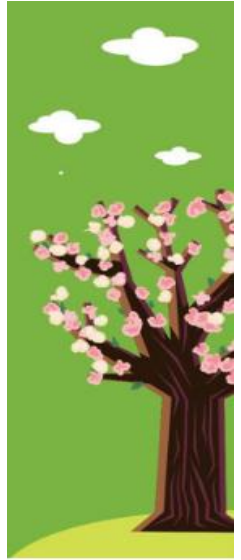




# Example Images of Interactive Learning Spaces







Example Perspective of Spring Neighborhood





Example Perspective of Summer Neighborhood







Fall

Example Perspective of Fall Neighborhood







Example Perspective of Winter Neighborhood





# **Northwest ISD**

## **Middle School #8**

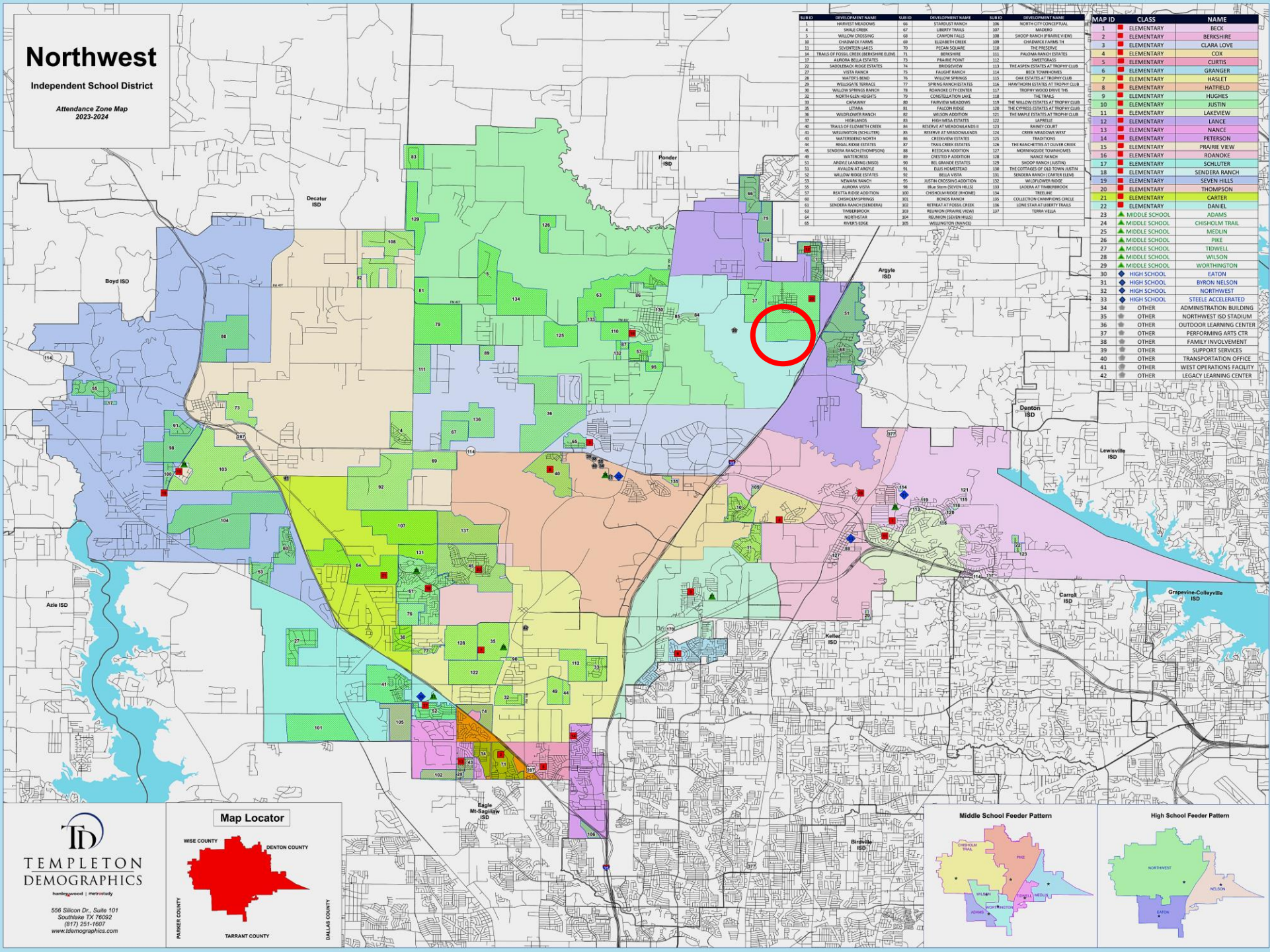




# Northwest

Independent School District

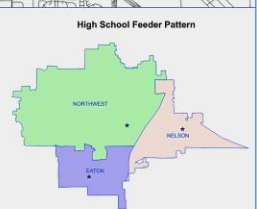
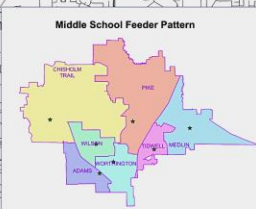
Attendance Zone Map  
2023-2024



SUB ID	DEVELOPMENT NAME	SUB ID	DEVELOPMENT NAME	SUB ID	DEVELOPMENT NAME
1	NORTHWEST MEADOWS	46	STARBUCKS RANCH	106	NORTH CITY CENTER
2	SHALE CREEK	47	LIBERTY TRAIL	107	BRANDS
3	WILLOW CROOKING	48	CANYON FALLS	108	SHOOP RANCH PRAIRIE VIEW
4	CHERRYBARK CIRCLE	49	ELLSWORTH CIRCLE	109	CHERRYBARK CIRCLE
5	SEVENTEEN LAKES	50	PECAN SQUARE	110	THE PULSAR
6	TRAILS OF TROOP CLUB	51	PRINCETON	111	PAULINA RANCH ESTATES
7	AURORA BEACH ESTATES	52	PRINCETON	112	PORTSMOUTH
8	SANDERSON RANCH ESTATES	53	BRIDGEVIEW	113	THE ASPEN ESTATES AT TROPHY CLUB
9	VISTA RANCH	54	FAUGHT RANCH	114	BECK TOWNHOMES
10	WINTERBEND	55	WILLOW SPRINGS	115	ONE ESTATES AT TROPHY CLUB
11	WILLOW GATE TOWNHOMES	56	SPRINGBROOK ESTATES	116	WILLOW GATE ESTATES AT TROPHY CLUB
12	WILLOW SPRINGS RANCH	57	ROANOKES CITY CENTER	117	TROPHY WOOD DRIVE THS
13	NORTH CITY RESIDUES	58	CONSTITUTION LAKE	118	THE WILLOW ESTATES AT TROPHY CLUB
14	LIBERTY	59	CANYON MEADOWS	119	THE WILLOW ESTATES AT TROPHY CLUB
15	UTAH	60	FALCON RIDGE	120	THE CYPRESS ESTATES AT TROPHY CLUB
16	WILLOW CROOKING	61	WILLOW ADDITION	121	THE MAPLE ESTATES AT TROPHY CLUB
17	WILLOW CROOKING	62	HIGH MEADOWS ESTATES	122	LAUREL
18	WILLOW CROOKING	63	RESERVE AT MEADOWLANDS II	123	BERRY COURT
19	WILLOW CROOKING	64	RESERVE AT MEADOWLANDS II	124	CREEK MEADOWS WEST
20	WILLOW CROOKING	65	TRAIL CREEK ESTATES	125	THE BANCHETT'S AT CLOVER CREEK
21	WILLOW CROOKING	66	MEDICAN ADDITION	126	MORNINGSTAR TOWNHOMES
22	WILLOW CROOKING	67	WILLOW CROOKING	127	NANCY RANCH
23	WILLOW CROOKING	68	WILLOW CROOKING	128	SHOOP RANCH (ESTATE)
24	WILLOW CROOKING	69	WILLOW CROOKING	129	SHOOP RANCH (ESTATE)
25	WILLOW CROOKING	70	WILLOW CROOKING	130	SHOOP RANCH (ESTATE)
26	WILLOW CROOKING	71	WILLOW CROOKING	131	SHOOP RANCH (ESTATE)
27	WILLOW CROOKING	72	WILLOW CROOKING	132	SHOOP RANCH (ESTATE)
28	WILLOW CROOKING	73	WILLOW CROOKING	133	SHOOP RANCH (ESTATE)
29	WILLOW CROOKING	74	WILLOW CROOKING	134	SHOOP RANCH (ESTATE)
30	WILLOW CROOKING	75	WILLOW CROOKING	135	SHOOP RANCH (ESTATE)
31	WILLOW CROOKING	76	WILLOW CROOKING	136	SHOOP RANCH (ESTATE)
32	WILLOW CROOKING	77	WILLOW CROOKING	137	SHOOP RANCH (ESTATE)
33	WILLOW CROOKING	78	WILLOW CROOKING	138	SHOOP RANCH (ESTATE)
34	WILLOW CROOKING	79	WILLOW CROOKING	139	SHOOP RANCH (ESTATE)
35	WILLOW CROOKING	80	WILLOW CROOKING	140	SHOOP RANCH (ESTATE)
36	WILLOW CROOKING	81	WILLOW CROOKING	141	SHOOP RANCH (ESTATE)
37	WILLOW CROOKING	82	WILLOW CROOKING	142	SHOOP RANCH (ESTATE)
38	WILLOW CROOKING	83	WILLOW CROOKING	143	SHOOP RANCH (ESTATE)
39	WILLOW CROOKING	84	WILLOW CROOKING	144	SHOOP RANCH (ESTATE)
40	WILLOW CROOKING	85	WILLOW CROOKING	145	SHOOP RANCH (ESTATE)
41	WILLOW CROOKING	86	WILLOW CROOKING	146	SHOOP RANCH (ESTATE)
42	WILLOW CROOKING	87	WILLOW CROOKING	147	SHOOP RANCH (ESTATE)
43	WILLOW CROOKING	88	WILLOW CROOKING	148	SHOOP RANCH (ESTATE)
44	WILLOW CROOKING	89	WILLOW CROOKING	149	SHOOP RANCH (ESTATE)
45	WILLOW CROOKING	90	WILLOW CROOKING	150	SHOOP RANCH (ESTATE)
46	WILLOW CROOKING	91	WILLOW CROOKING	151	SHOOP RANCH (ESTATE)
47	WILLOW CROOKING	92	WILLOW CROOKING	152	SHOOP RANCH (ESTATE)
48	WILLOW CROOKING	93	WILLOW CROOKING	153	SHOOP RANCH (ESTATE)
49	WILLOW CROOKING	94	WILLOW CROOKING	154	SHOOP RANCH (ESTATE)
50	WILLOW CROOKING	95	WILLOW CROOKING	155	SHOOP RANCH (ESTATE)
51	WILLOW CROOKING	96	WILLOW CROOKING	156	SHOOP RANCH (ESTATE)
52	WILLOW CROOKING	97	WILLOW CROOKING	157	SHOOP RANCH (ESTATE)
53	WILLOW CROOKING	98	WILLOW CROOKING	158	SHOOP RANCH (ESTATE)
54	WILLOW CROOKING	99	WILLOW CROOKING	159	SHOOP RANCH (ESTATE)
55	WILLOW CROOKING	100	WILLOW CROOKING	160	SHOOP RANCH (ESTATE)

MAP ID	CLASS	NAME
1	ELEMENTARY	BECK
2	ELEMENTARY	BERKSHIRE
3	ELEMENTARY	CLARA LOVE
4	ELEMENTARY	COX
5	ELEMENTARY	CLINTS
6	ELEMENTARY	GRANGER
7	ELEMENTARY	HASLET
8	ELEMENTARY	HATFIELD
9	ELEMENTARY	HUGHES
10	ELEMENTARY	JUSTIN
11	ELEMENTARY	LAKEVIEW
12	ELEMENTARY	LANCE
13	ELEMENTARY	NANCE
14	ELEMENTARY	PETERSON
15	ELEMENTARY	PRAIRIE VIEW
16	ELEMENTARY	ROANOKES
17	ELEMENTARY	SCHULTER
18	ELEMENTARY	SENDERA RANCH
19	ELEMENTARY	SEVEN HILLS
20	ELEMENTARY	THOMPSON
21	ELEMENTARY	CARTER
22	ELEMENTARY	DANIEL
23	MIDDLE SCHOOL	ADAMS
24	MIDDLE SCHOOL	CHISHOLM TRAIL
25	MIDDLE SCHOOL	MEDLIN
26	MIDDLE SCHOOL	PIKE
27	MIDDLE SCHOOL	TIDWELL
28	MIDDLE SCHOOL	WILSON
29	MIDDLE SCHOOL	WORTHINGTON
30	HIGH SCHOOL	EATON
31	HIGH SCHOOL	BYRON NELSON
32	HIGH SCHOOL	NORTHWEST
33	HIGH SCHOOL	STEELE ACCELERATED
34	OTHER	ADMINISTRATION BUILDING
35	OTHER	NORTHWEST ISD STADIUM
36	OTHER	OUTDOOR LEARNING CENTER
37	OTHER	PERFORMING ARTS CTR
38	OTHER	FAMILY INVOLVEMENT
39	OTHER	SUPPORT SERVICES
40	OTHER	TRANSPORTATION OFFICE
41	OTHER	WEST OPERATIONS FACILITY
42	OTHER	LEGACY LEARNING CENTER

**TD**  
TEMPLETON  
DEMOGRAPHICS  
hardy@templeton.com | metro@templeton.com  
556 Silicon Dr., Suite 101  
Southlake, TX 76092  
(817) 281-1607  
www.templeton.com



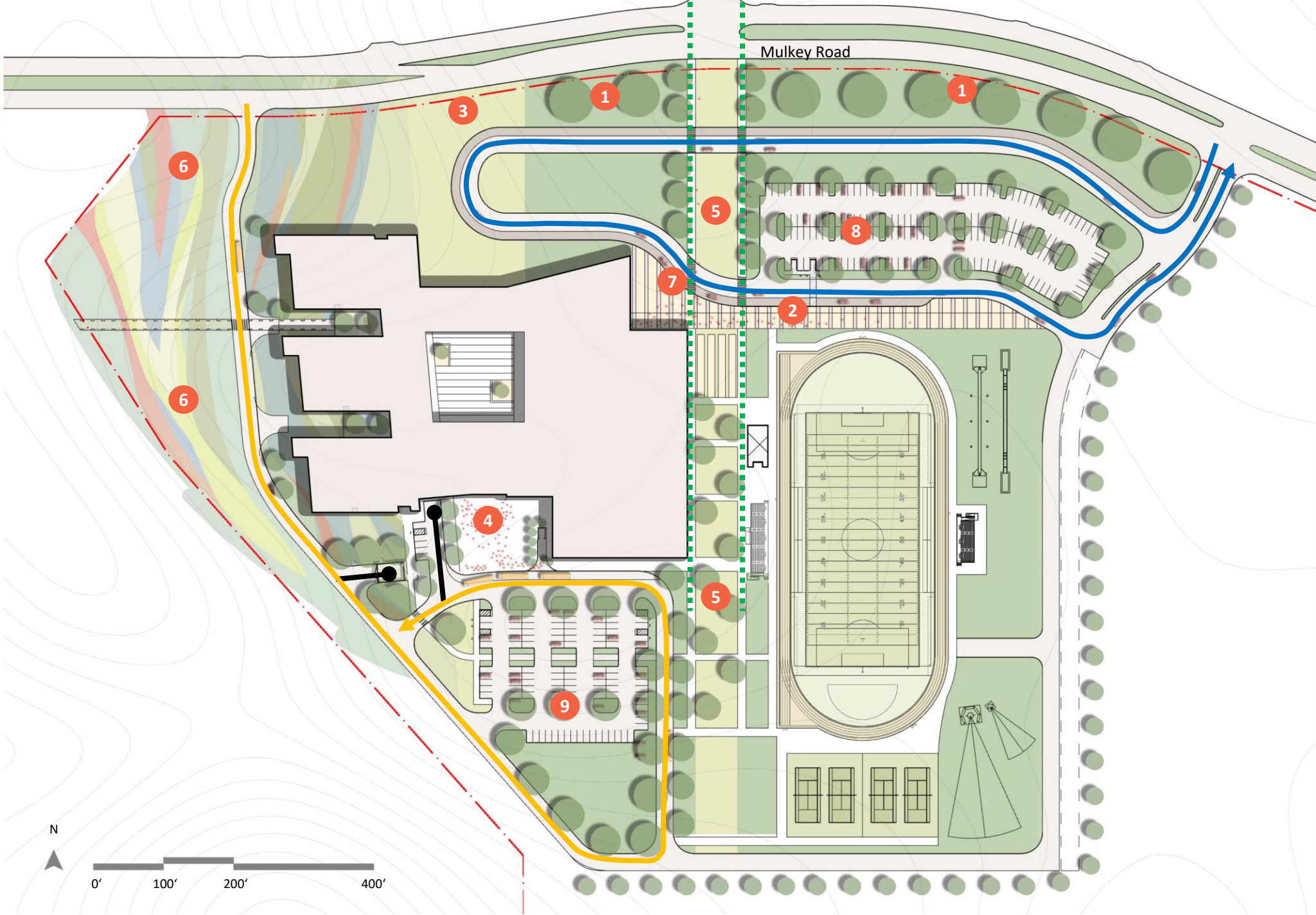


# Site Plan

Site Area = 29.7 acres

- 1. Pecan Grove
- 2. Pedestrian Arrival
- 3. Blackland Prairie
- 4. Bus drop-off/Plaza
- 5. Community Lawn/Plaza
- 6. Butterfly Nature Preserve
- 7. Parent’s drop-off Plaza
- 8. Visitors/Event Parking Spaces (159)
- 9. Staff/Event Parking Spaces (106)

- Service
- Parents / Staffs
- Bus/Visitors/Event
- Pedestrian





# Massing/Envelope/Materiality

Aerial View





# Massing/Envelope/Materiality

Eye Level View





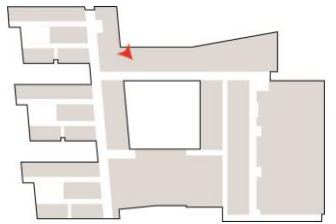
# Massing/Envelope/Materiality

Eye Level Arrival Plaza View



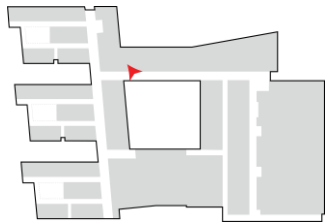


## Media Center



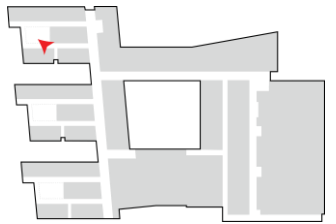


# Media Center





## Academic House





# **Northwest ISD**

## **Comprehensive High School #4**

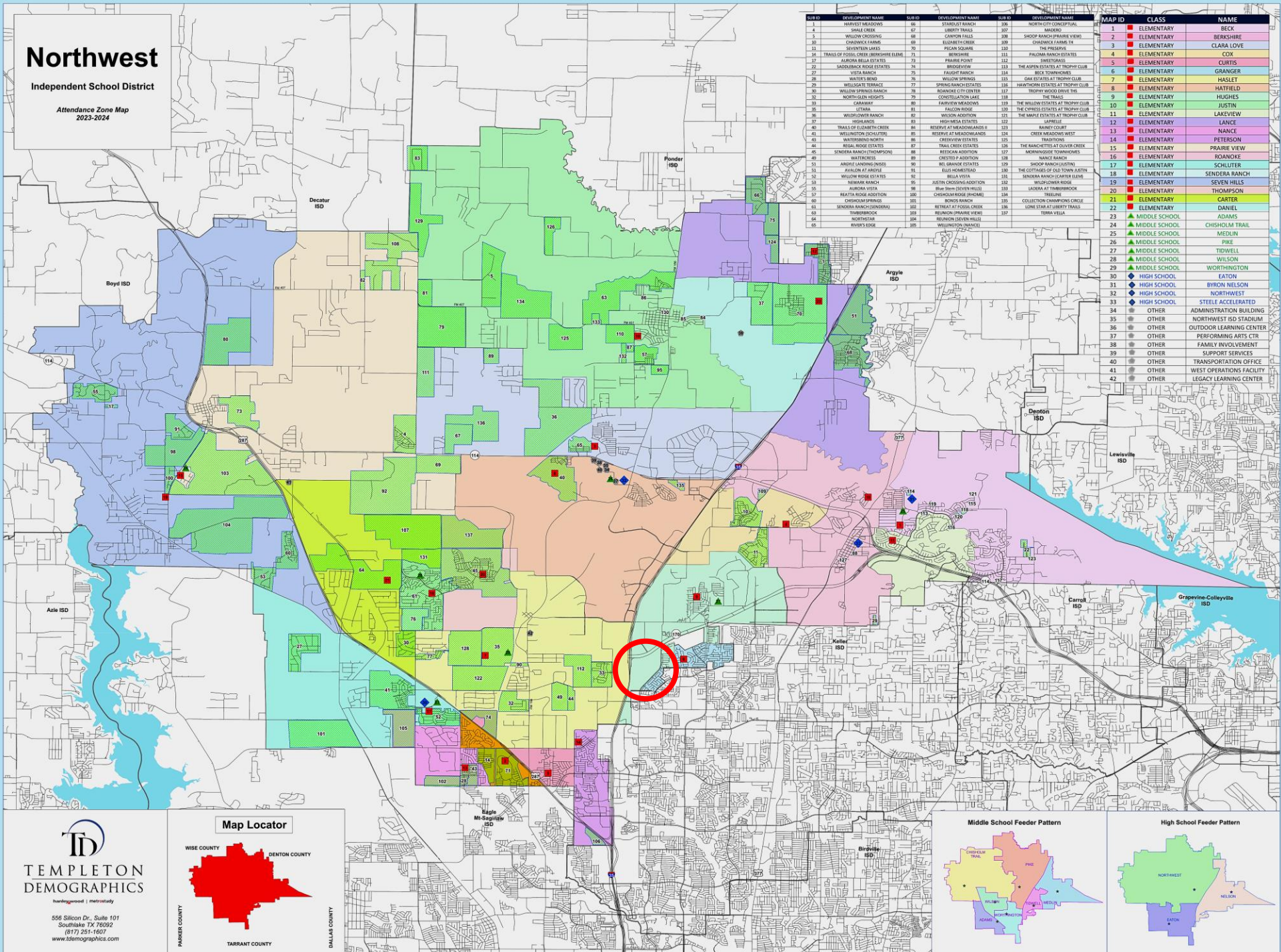




# Northwest

Independent School District

Attendance Zone Map  
2023-2024





## High School Site Plan Project Data

Site Acres:	149.0 acres
Square Feet:	660,000 sf
Students:	3,200
Grades:	9-12

## Parking Counts

Standard Parking:	1,738 spaces
Athletic Parking:	357 spaces
AG Parking:	71 spaces
Bus Parking:	41 spaces
Total Parking:	2,166 spaces

- ① MAIN ENTRY
- ② SECONDARY ENTRY
- ③ ATHLETIC ENTRY
- ④ THEATER ENTRY
- ⑤ SERVICE AREA

site plan







overall aerial view





overall east side elevation





main entry





football stadium and arena entry





performing arts entry





main entry corridor looking into the media center and courtyard





media center





cafeteria





main corridor and collaboration spaces





academic house entry and collaboration space





[www.nisdtxconstruction.org](http://www.nisdtxconstruction.org)

Questions?