



RICHLAND ONE

ENGAGE • EDUCATE • EMPOWER

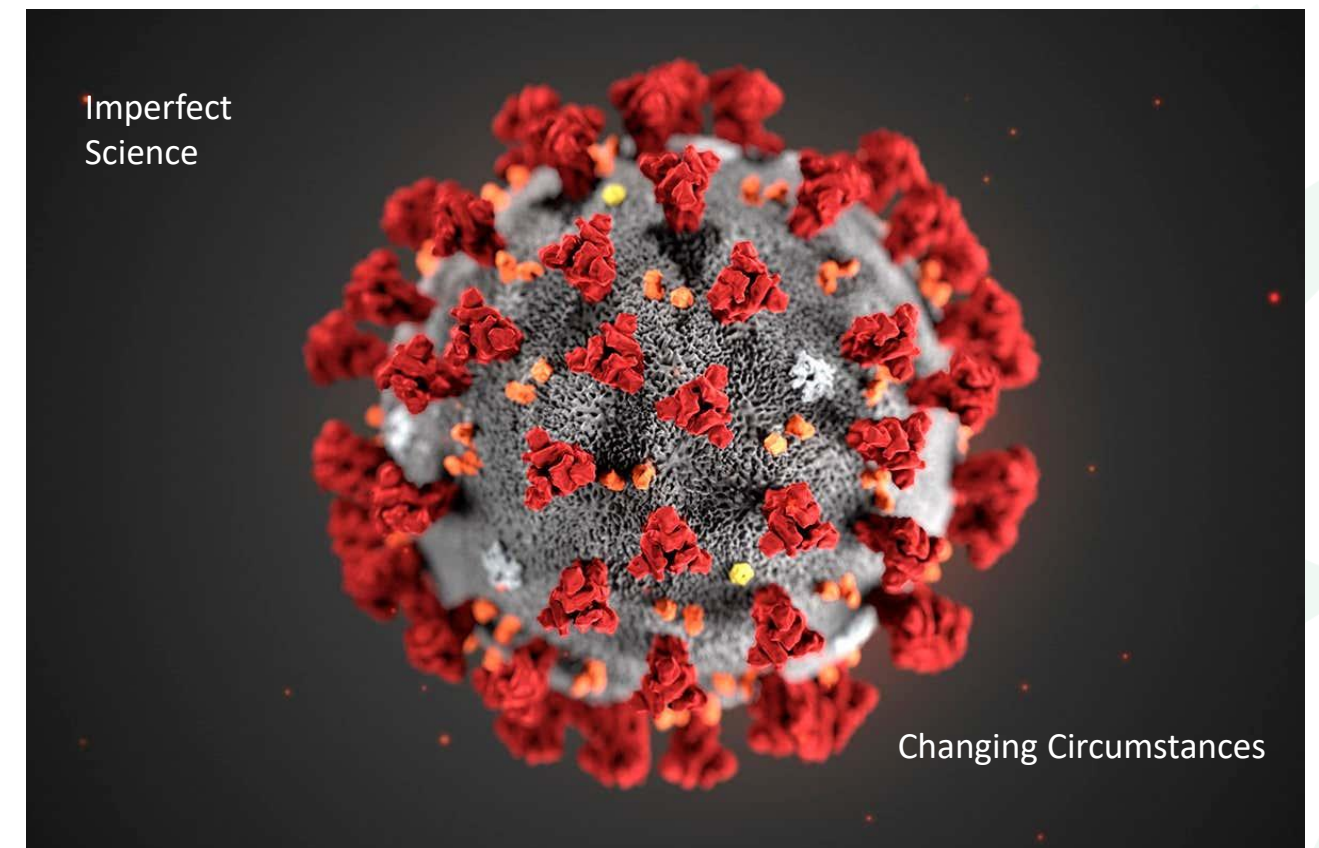
Reopening Schools Plan 2020-2021

July 21, 2020

Goal



Develop an ***adaptive plan*** for the ***safe reopening*** of Richland One schools that can evolve based on science and circumstances.



Update on COVID-19 in SC



March 15

- 28 known/confirmed cases
- 9 new confirmed/suspected cases

July 20

- 71,213 known/confirmed cases
- 1,445 new cases
- 1,147 total deaths
- 9 additional deaths

<https://www.scdhec.gov/infectious-diseases/viruses/coronavirus-disease-2019-covid-19/sc-testing-data-projections-covid-19>

Research



- Harvard University researchers say nearly 40% of counties in SC need “stay-at-home” orders.
- The Harvard Global Health Institute identified Richland County as one of 18 counties at a “red” risk alert. “Red alert” is considered the “tipping point.”
- A study by Johns Hopkins University ranks SC as third-highest state for percentage of positive tests during the last week.
 - CountonNews2, July 8, 2020

DHEC Metrics Impacting Richland One



Recent Disease Activity, by County

As of 7.20.2020



McCormick	High	563.2	High	High	22.1%
Newberry	High	620.5	High	High	31.0%
Oconee	High	297.3	High	High	11.0%
Orangeburg	High	760.3	High	High	22.1%
Pickens	High	343.4	Medium	High	15.1%
Richland	High	479.8	High	High	23.4%
Saluda	High	540.3	High	High	24.6%
Spartanburg	High	368.6	High	High	17.7%
Sumter	High	469.4	High	High	32.9%
Union	High	313.8	High	High	24.2%
Williamsburg	High	663.3	High	High	22.4%

Rating 1: **Two-week cumulative incidence rate** (# of new cases in the prior two weeks; High is 200 or more cases)

Rating 2: **Trend in incidence rate** (compared to previous two weeks; Increasing = High)

Rating 3: **Two-week percent positive rate** (compared to # of individuals tested; High is 10.1% or higher)

To determine county's overall rating, calculate the average of the 3 categories.

Richland is HIGH in all categories; therefore, our rating is HIGH.

Source: SCDHEC, 7/20/2020.

	July 5, 2020	July 20, 2020
Incidence Rate/100K	348.1	479.8
Percent Positive	19.8%	23.4%

AccelerateED Guidance



Model 1: Traditional

“In this scenario, health guidelines and facility considerations allow for all students and staff to return to a school building to reopen the school year and during the school calendar due to *low or no spread of COVID-19 in the area and low to no positive cases within the school building*” (pg. 33).

Model 2: Hybrid

“This situation is most likely to be experienced during a period of *medium spread of COVID-19 in the area and a medium number of positive cases within the school building*” (pg. 35).

Model 3: Virtual

“In this scenario, all students and staff are unable to return to a physical building due to *high spread of COVID-19 in the area and high numbers of positive cases within the school building*” (pg. 37).

CDC Guiding Principles



- **Lowest Risk:** Full sized, in-person classes, activities, and events. Students are not spaced apart, share classroom materials or supplies, and mix between classes and activities.
- **More Risk:** Small, in-person classes, activities, and events. Groups of students stay together and with the same teacher throughout/across school days and groups do not mix. Students remain at least 6 feet apart and do not share objects.
- **Highest Risk:** Students and teachers engage in virtual-only classes, activities, and events.

Source: Consideration for K-12 Schools: Readiness and Planning Tool,
<https://www.cdc.gov/coronavirus/2019-ncov/downloads/community/School-Admin-K12-readiness-and-planning-tool.pdf>

Parent/Teacher Concerns



- **Safety protocols**
- **School format and schedule**
- **Decision-making based on COVID-19 infection statistics**
- **Balancing need for social interaction against risk**



Parent Survey – 1st, 2nd, & 3rd Choices



eLearning Virtual:	DISTRICT	ELEM	MIDD	HIGH
1st	44.52%	44.04%	46.99%	43.22%
2nd	23.08%	22.74%	22.82%	24.37%
3rd	32.40%	33.22%	30.18%	32.41%
Grand Total	100.00%	100.00%	100.00%	100.00%

% Face-to-Face	DISTRICT	ELEM	MIDD	HIGH
1st	29.10%	30.65%	26.57%	27.28%
2nd	16.85%	16.34%	17.16%	18.02%
3rd	54.05%	53.01%	56.27%	54.70%
Grand Total	100.00%	100.00%	100.00%	100.00%

Hybrid	DISTRICT	ELEM	MIDD	HIGH
1st	26.38%	25.31%	26.44%	29.51%
2nd	60.07%	60.92%	60.02%	57.61%
3rd	13.55%	13.78%	13.55%	12.89%
Grand Total	100.00%	100.00%	100.00%	100.00%

Note: 4429 comments received.

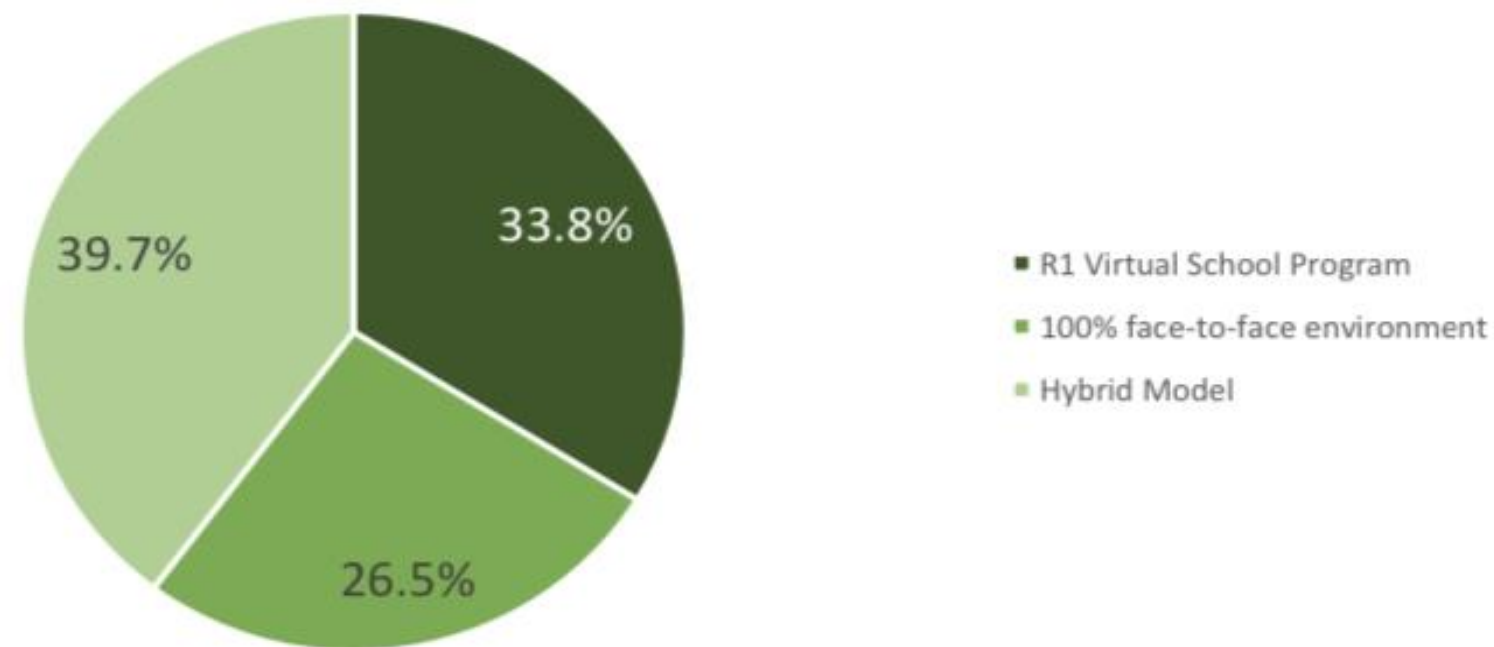
July 13, 2020
N=10,516

1st Choice of Instructional Model by Staff



The chart below shows the percentage of survey respondents who chose the instructional model listed as their “most desirable” option (rank=1).

1st Choice selection by instructional model across All Levels



July 13, 2020
N=2,662

Staff Preferences - 1st, 2nd, and 3rd Choice Options



ALL SCHOOLS

SCHOOL STAFF	Total Responses	R1 Virtual School Program			100% face-to-face environment			Hybrid Model		
		1st Choice	2nd Choice	3rd Choice	1st Choice	2nd Choice	3rd Choice	1st Choice	2nd Choice	3rd Choice
Total	2,662	899	690	1,073	705	584	1,373	1,058	1,388	216
		33.8%	25.9%	40.3%	26.5%	21.9%	51.6%	39.7%	52.1%	8.1%

"I am interested in working in..."

Richland One Task Force



- Comprised of Chairs and Co-Chairs of Numerous Committees
- Types of Committees
 - Various Health/Safety/Operations Committees
 - 8 Design Committees (Organizational Levels and Select Groups)
 - 4 Support Services Committees
- Membership of Committees
 - 100+ Teachers
 - 50+ School Leaders
 - District Leaders
 - Classified Staff
 - 25+ Parents
- Teacher Group Meetings
- Parent Group Meetings



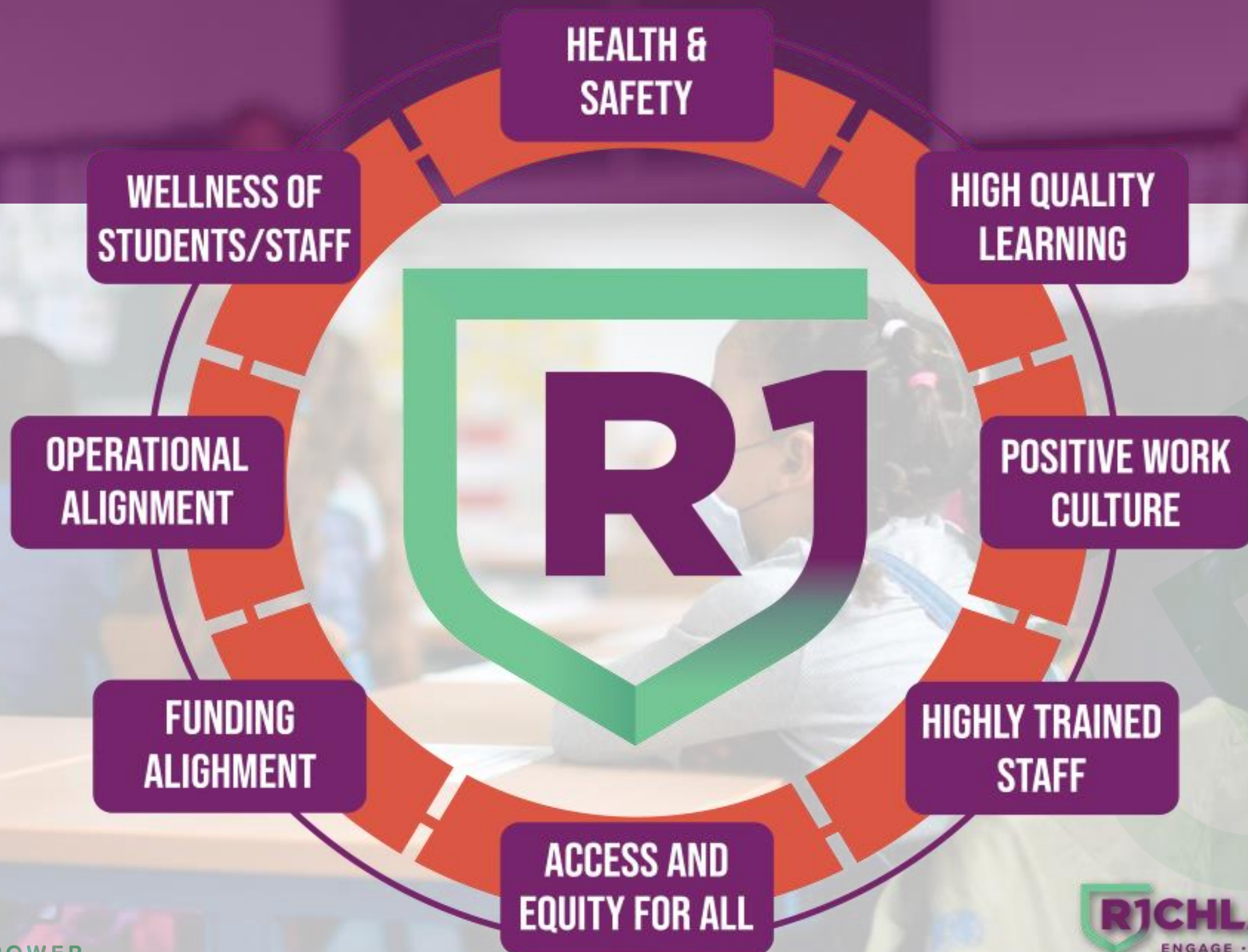
Parent/Community & Agency/Organization Involvement



- 1st Set of Surveys
 - 6,550 Parent Responses (June 15)
 - 1,342 Teacher Responses (June 7)
- Health Care Advisement
 - Leadership Meetings with Medical Doctors
 - Presentation by Medical Doctors
 - External Epidemiologist
- Capacity/Social Distancing Advisement
 - 2 Presentations by Perkins&Will (District Leaders & Principals)
 - Virtual Consultation by Perkins&Will
- 2nd Set of Surveys
 - 10,516 Parent Responses (July 13)
 - 2,662 Teacher Responses (July 13)



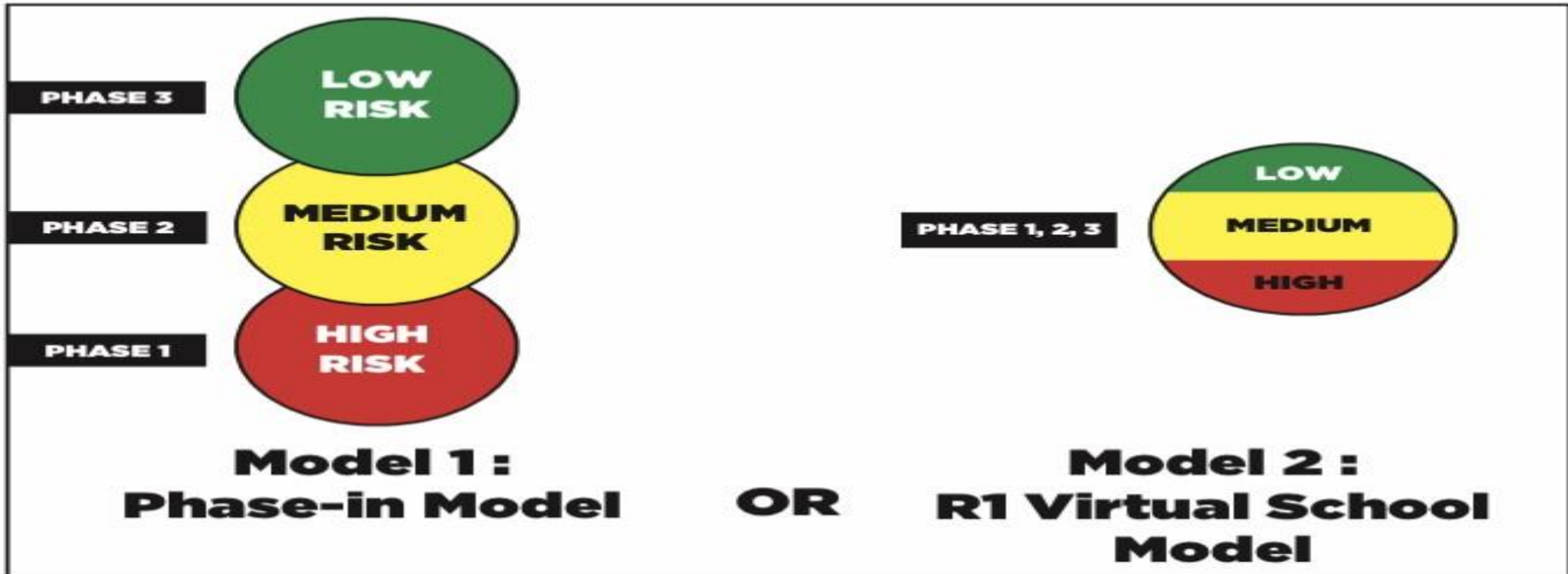
REOPENING PRIORITIES



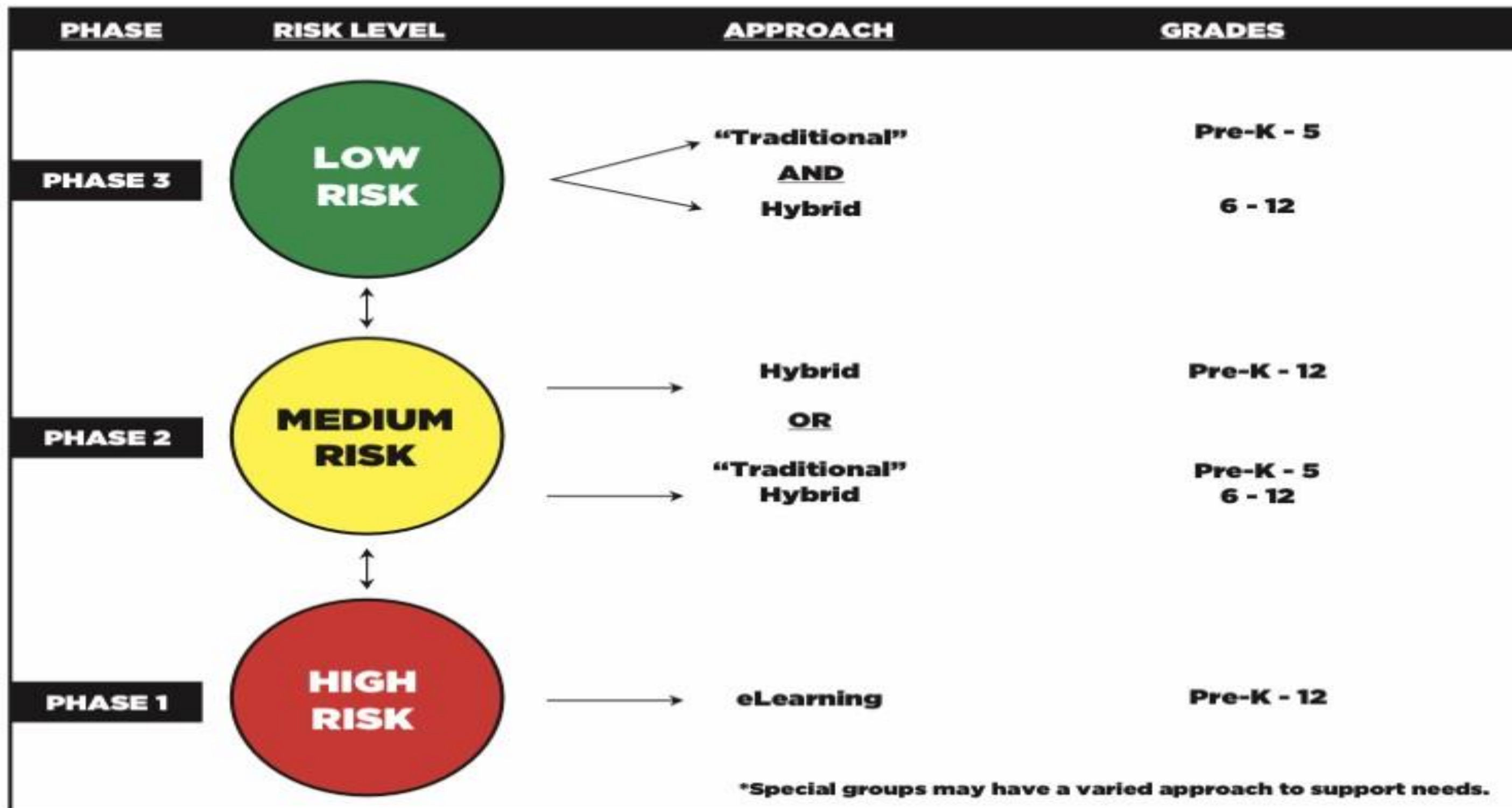
Options



Reopening Options 2020-2021



Model 1 : Phase-In Model





eLearning
PHASE 1



Phase 1: eLearning



- **Students remain assigned to their home/zoned school & are taught by teachers who are assigned to that school.**
- Attendance will be taken in all classes daily. Students are expected to participate.
- District grading policies and SC Uniform Grading Policy will be followed.



Phase 1: eLearning



- Core content will be based on South Carolina standards with “normal” amount of work expected.
- Both “live” and recorded learning experiences will be used.
- Assessments as required by the state and/or district will be administered.

Phase 1: eLearning



- Students who qualify for special services (IEPs, ESOL, GT, etc.) will be provided access to the services. Models and formats may be modified to be implemented virtually.
- Eligible students will have access to district intervention tools and support from interventionists.



Phase 1: eLearning



- Schedules will be established and posted so that parents and students can know what to expect.
- Microsoft Teams will be used to support ease of instructional delivery and interaction with students and parents.
- Training and resources will be provided for parents on the technology and online tools that will be used.



Hybrid
PHASE 2



Phase 2: Hybrid



- **Students remain assigned to their home/zoned school & are taught by the same teachers who taught them in the eLearning phase.**
- Attendance will be taken in all classes daily. Students are expected to participate.
- District grading policies and SC Uniform Grading Policy will be followed.



Phase 2: Hybrid



What is unique about the hybrid phase?

- Students are assigned to either “A” cohort” or “B” cohort.
- “A” cohort attends on Monday and Tuesday; “B” cohort attends on Thursday and Friday.
- **In-person**, “live” and recorded lessons (R1TV, district website) are utilized.
- Deep cleaning of classrooms will occur before each cohort’s 2-day in-school learning experience.



Sample Hybrid Model Schedule - Elementary

Monday	Tuesday	Wednesday	Thursday	Friday
Cohort A - Face-2-Face Cohort B - Virtual	Cohort A – Face-2-Face Cohort B - Virtual	Cohorts A & B	Cohort B - Face-2-Face Cohort A - Virtual	Cohort B - Face-to-Face Cohort A - Virtual
Staggered Arrival	Staggered Arrival	FLEX DAY Virtual Office Hours Small Groups Planning Sessions Parent/Teacher Conferences Recording of Asynchronous Lessons.	Staggered Arrival	Staggered Arrival
Breakfast	Breakfast		Breakfast	Breakfast
Morning Meeting (SEL)	Morning Meeting (SEL)		Morning Meeting (SEL)	Morning Meeting (SEL)
ELA & Intervention (Integrated Science & Social Studies)	ELA & Intervention (Integrated Science & Social Studies)		ELA & Intervention (Integrated Science & Social Studies)	ELA & Intervention (Integrated Science & Social Studies)
Lunch	Lunch		Lunch	Lunch
Mathematics (Integrated Science & Social Studies)	Mathematics (Integrated Science & Social Studies)		Mathematics (Integrated Science & Social Studies)	Mathematics (Integrated Science & Social Studies)
Related Arts	Related Arts		Related Arts	Related Arts
Recess	Recess		Recess	Recess
Staggered Dismissal	Staggered Dismissal		Staggered Dismissal	Staggered Dismissal

:Phase 2: Hybrid



- On the days students are not physically present in school, they will follow a posted schedule to complete assignments and continue learning at home.
- All work assigned must be completed--regardless of where it is being done.
- Timely feedback will be provided on all completed work.

:Phase 2: Hybrid (Elementary)



- Teachers will host scheduled parent check-ins. Parents may log in to ask questions and receive updates directly from the teachers.
- Teachers will distribute a classroom forecast that includes upcoming lesson topics, standing assignments, and other important information (weekly or bi-weekly, based on grade level and district expectations).

Phase 2: “Traditional”

(if supported by scientific evidence)



PreK-Grade 5

- “Classroom family” is provided face-to-face instruction by core content teacher.
- The “family” is together for meals, work, and play (classroom or outside areas).
- Most non-core teachers “push in.”
- Some students will leave for specialized instruction.
- There will be staggered arrival and departure.



“Traditional”
PHASE 3



Phase 3: “Traditional”



PreK-Grade 5

- “Classroom family” is provided face-to-face instruction by the core content teacher.
- The “family” is together for meals, work, and play (classroom or outside areas).
- Most non-core teachers “push in.”
- Some students will leave for specialized instruction.
- There will be staggered arrival and departure.



Physical Distancing – AAP Guidance



“Evidence suggests that spacing as close as 3’ may approach the benefits of 6’ of space, particularly if students are wearing face coverings and are asymptomatic.”

-American Academy of Pediatrics Guidance

R1 Elementary = 56% at 6’

There is a very limited suggestion that 3 feet is okay in SOME cases but certainly not universally...if you say 6 feet, people will realistically do 5 feet. If you say 3 feet, that probably turns into 2 feet.

*-Dr. Jake Kleinmahon, Director of Pediatric Heart Transplant and Heart Failure,
Ochsner Hospital for Children, 7/21/2020*

Phase 3 – “Traditional”



Physical distancing prohibits “traditional” model in grades 6-12; therefore, students in these grades will continue in the hybrid model.

The CDC recommends “space seating/desks 6’ apart when feasible.”

R1 Middle Schools = 57%


R1 High Schools = 63%



Model 2



Model 2 : R1 Virtual School Program Model

PHASE	RISK LEVEL	APPROACH	GRADES
PHASE 1, 2, 3		R1 Virtual School Program	K - 12

R1 Virtual School Program Model



- Year-long program
- **Student remains enrolled in zoned school, but will may not have any of zoned school teachers**
- Process includes an application
- Program follows the district's school year calendar
- Student schedules structured as a standard school day
- Afterschool extra curricula activities at homeschool allowed, if student meets program eligibility requirements
- District grading procedures and SC Uniform Grading Policy followed
- Attendance requirements expected and monitored
- State and/or district assessments administered.

R1 Virtual School Program Model



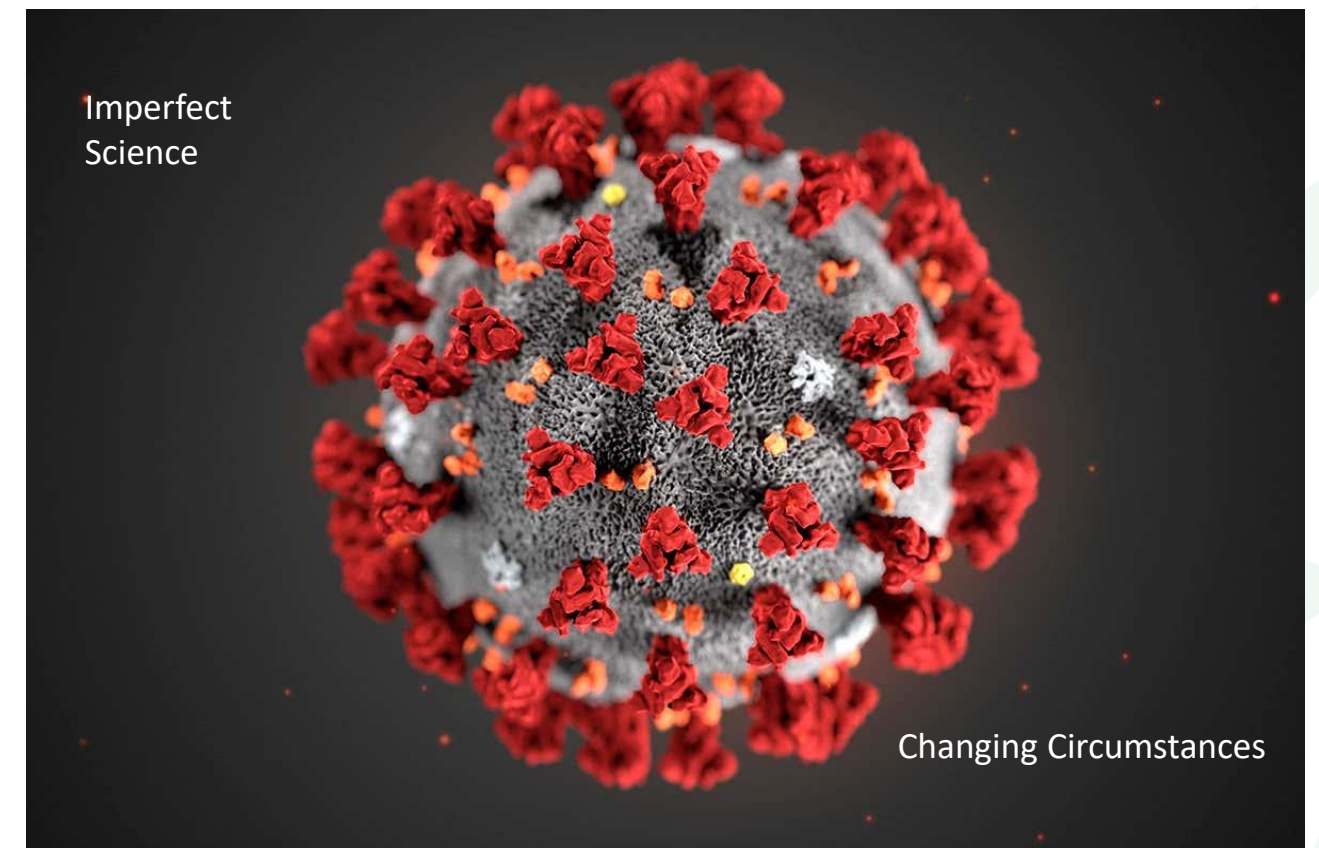
Curriculum

- Standards-based
- May include some outsourced digital courses (VirtualSC, Pearson, Edgenuity) or content, depending on need
- All courses not necessarily best suited for virtual format

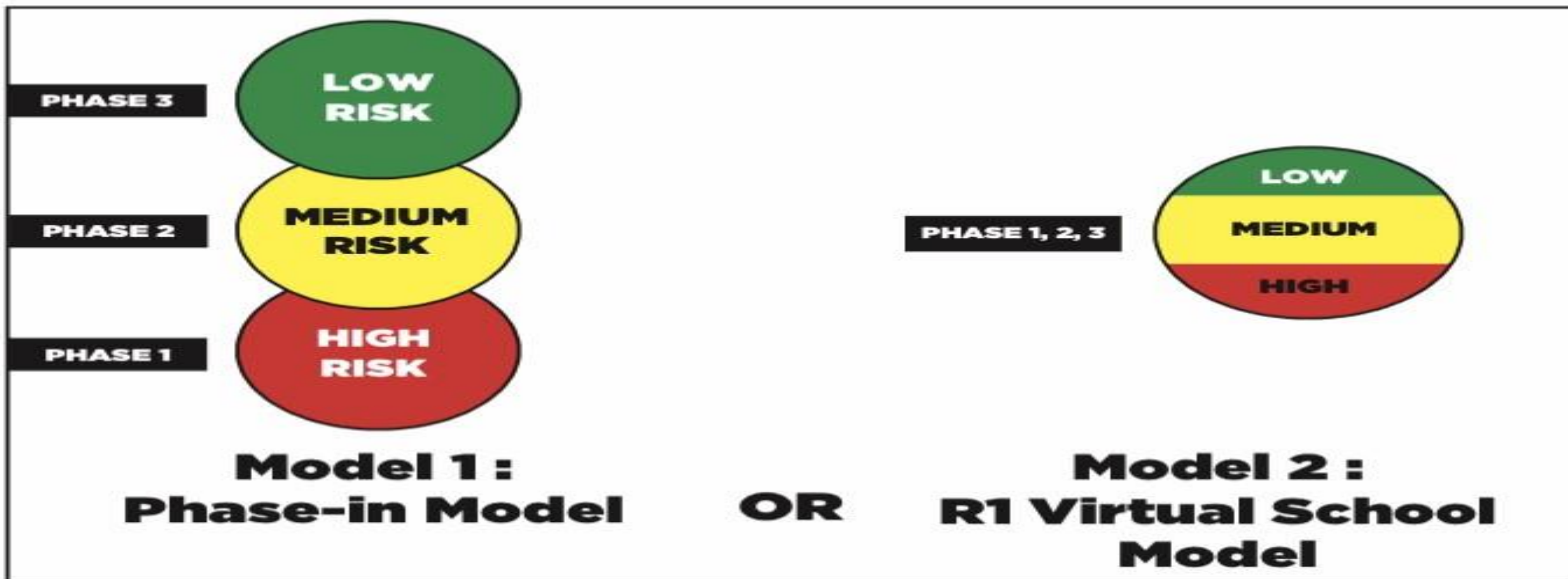
Goal



Develop an ***adaptive plan*** for the ***safe reopening*** of Richland One schools that can evolve based on science and circumstances.



Reopening Options 2020-2021



Next Steps for Moving Forward



- Recommend August 31, 2020 start date for students.
- Publish *R1 2020 Opening of Schools Guide*.
- Continue work with school administration to support implementation.
- Cascade essential information to parents and staff.
- Continue opening schools activities.

Acknowledgements and Appreciation



- Task Force
- Committees
- Health Care Professionals
- Stakeholders

