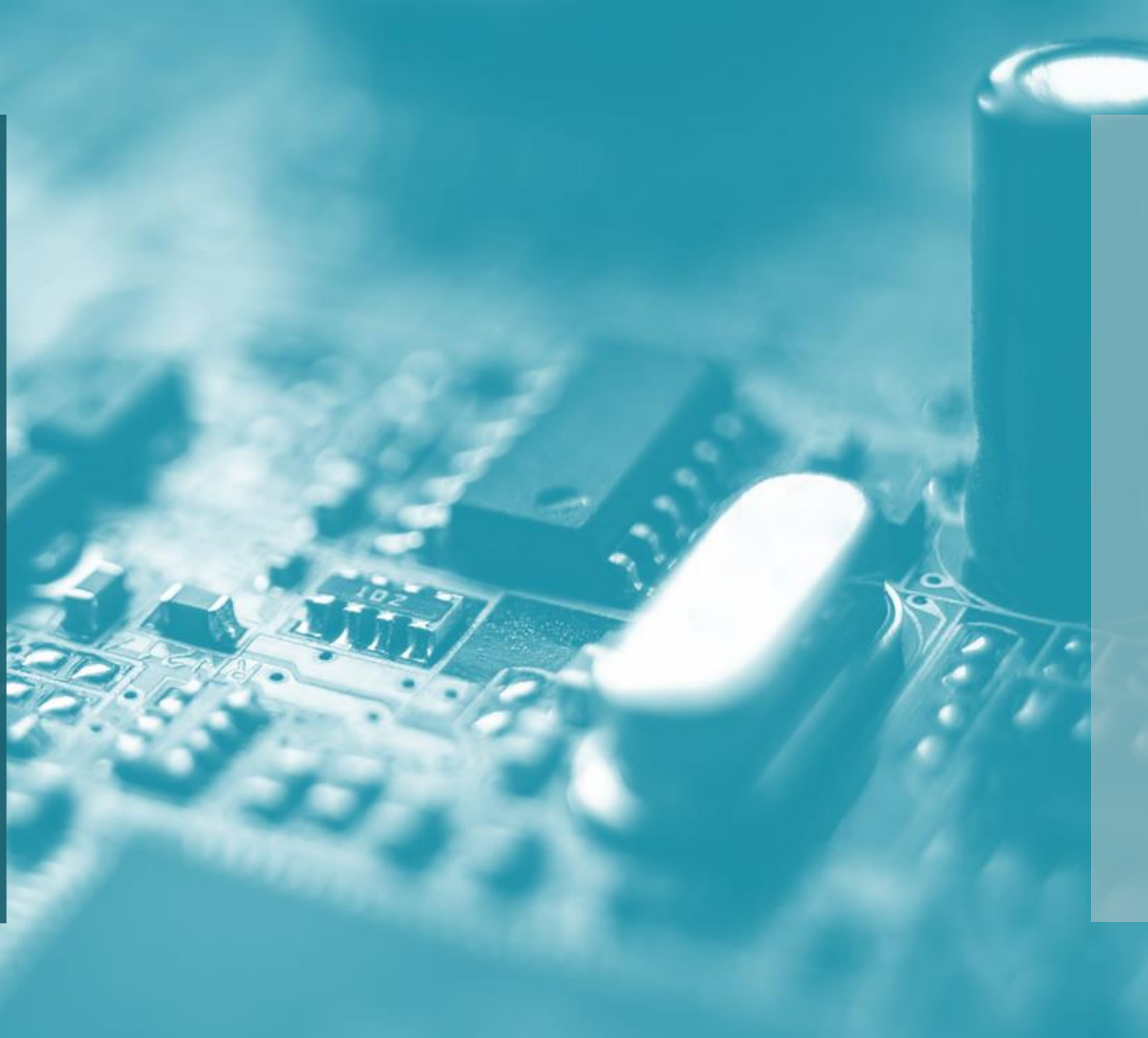


College & Career Readiness

AC Flora High Falcons Fly
High



PROFILE OF THE South Carolina Graduate

WORLD-CLASS KNOWLEDGE

Rigorous standards in language arts
and math for career and college
readiness

Multiple languages, science, technology,
engineering, mathematics (STEM), arts and
social sciences



WORLD-CLASS SKILLS

Creativity and innovation

Critical thinking and
problem solving

Collaboration and teamwork

Communication, information,
media and technology

Knowing how to learn

LIFE AND CAREER CHARACTERISTICS

Integrity • Self-direction • Global perspective • Perseverance • Work ethic • Interpersonal skills

© SCASA Superintendents' Roundtable

Adopted by: SC Arts Alliance, SC Arts in Basic Curriculum Steering Committee, SCASCD, SC Chamber of Commerce, SC Council on Competitiveness, SC Education Oversight Committee, SC State Board of Education, SC State Department of Education, TransformSC Schools and Districts.





Richland One offers a variety of course options to help every student reach their goals!

- Advanced Placement (AP)
- International Baccalaureate (IB)
- Dual Enrollment
- Career & Technical Education (CTE)

Exams to
assess student
progress as
well as level of
college and
career
readiness

ACT/P-ACT – TBD

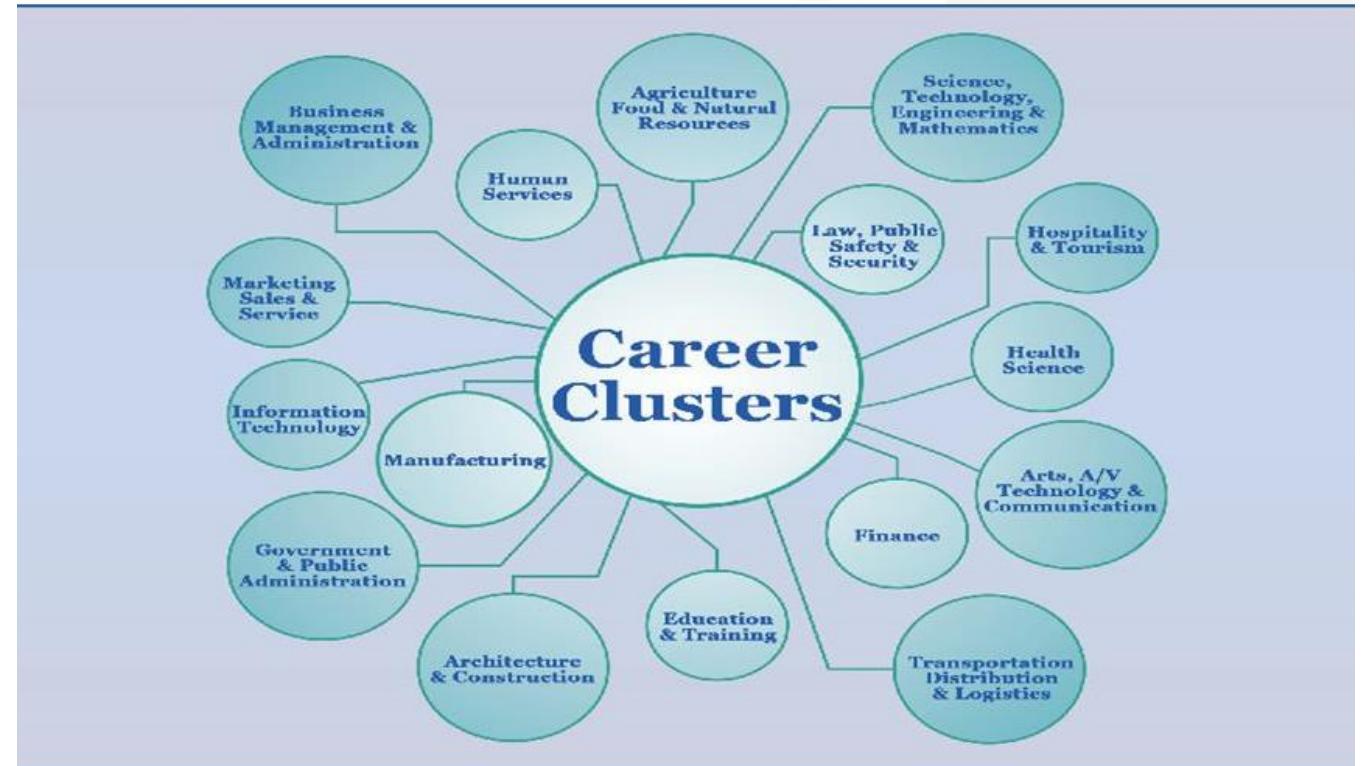
SAT/P-SAT – Oct.

ASVAB – TBD

WIN – Oct. for Seniors/March for Juniors

Heyward Career Center offers hands-on Career and Technical Education Training

SC CTE Curriculum Pathways Align to the 16 Career Clusters



What Path
Will You
Choose?





ACT – 20 OR HIGHER



**SAT – 1020 OR
HIGHER**



AP – 3 OR HIGHER



**IB (HL) – 4 OR
HIGHER**



**DUAL ENROLLMENT –
ALL 6 CREDITS
(C OR HIGHER)**

College Bound

Career Ready

Career and Technical Education (CTE) Completer and earns National or state industry credential

Earn Silver, Gold, or Platinum on WIN Assessment (This is a required assessment)

ASVAB – 31 or higher

Successfully complete a state-approved work-based learning program