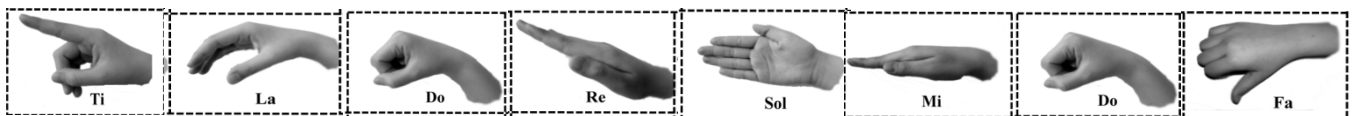
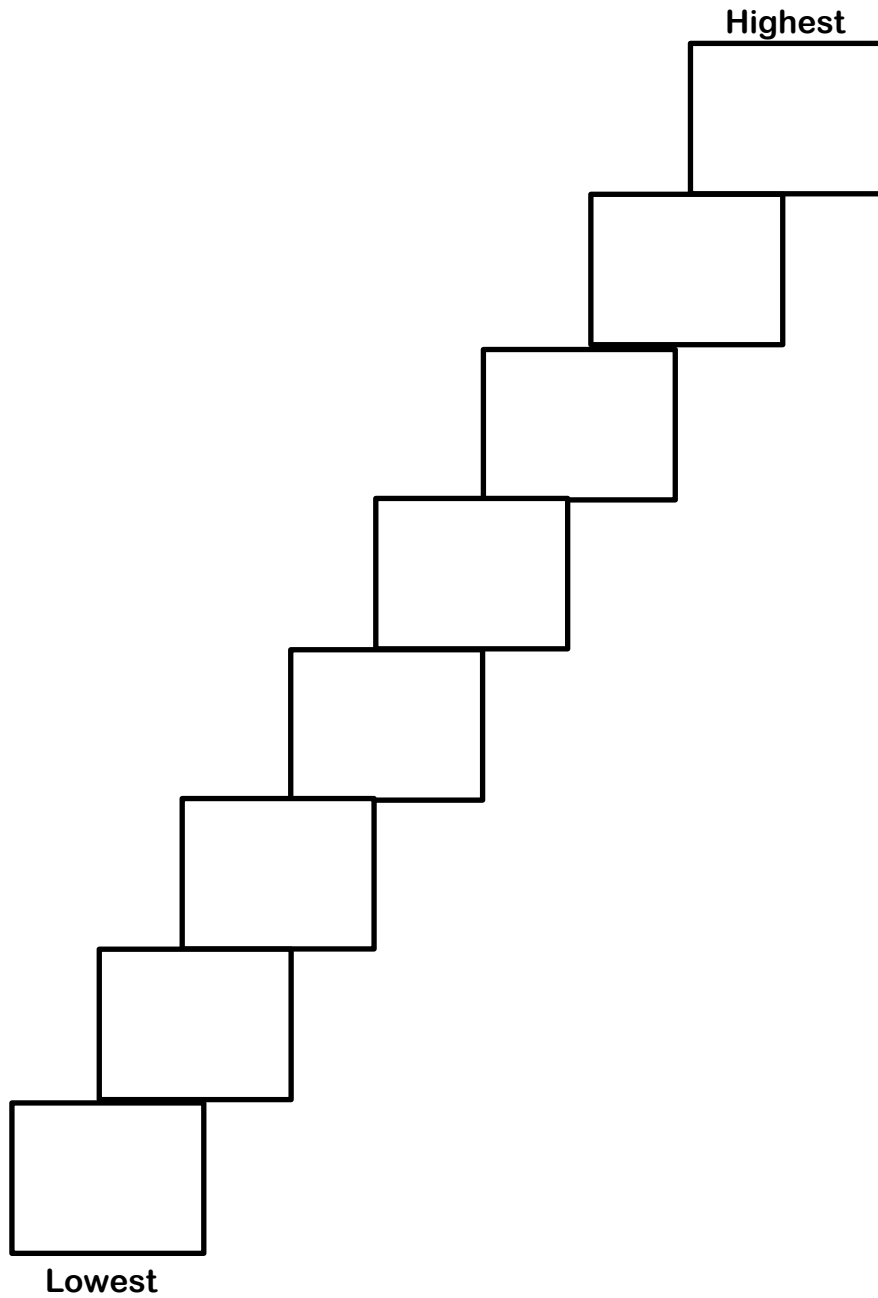


My name is \_\_\_\_\_



# Solfege Singing Scale

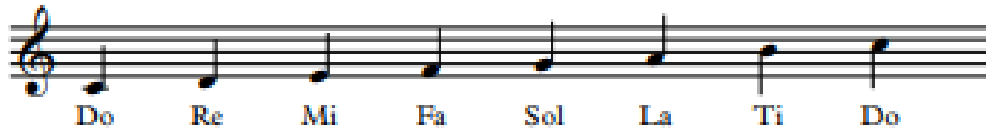
**DIRECTIONS: HELP!** The scale is all mixed up at the bottom!!!  
Cut out the singing syllables & glue them into their proper order,  
from lowest to highest.



Name \_\_\_\_\_

# Beginning Solfege Worksheet #1

Example:



A musical staff in treble clef showing a sequence of eight quarter notes: C4, D4, E4, F4, G4, A4, B4, and C5. Below each note is its corresponding solfege syllable: Do, Re, Mi, Fa, Sol, La, Ti, Do.

Write out Solfege for the following notes:



A musical staff in treble clef with eight quarter notes: C4, D4, E4, F4, G4, A4, B4, and C5. Below each note is a horizontal line for writing the solfege syllable.



A musical staff in treble clef with eight quarter notes: C4, D4, E4, F4, G4, A4, B4, and C5. Below each note is a horizontal line for writing the solfege syllable.



A musical staff in treble clef with eight quarter notes: C4, D4, E4, F4, G4, A4, B4, and C5. Below each note is a horizontal line for writing the solfege syllable.



A musical staff in treble clef with eight quarter notes: C4, D4, E4, F4, G4, A4, B4, and C5. Below each note is a horizontal line for writing the solfege syllable.



A musical staff in treble clef with eight quarter notes: C4, D4, E4, F4, G4, A4, B4, and C5. Below each note is a horizontal line for writing the solfege syllable.