

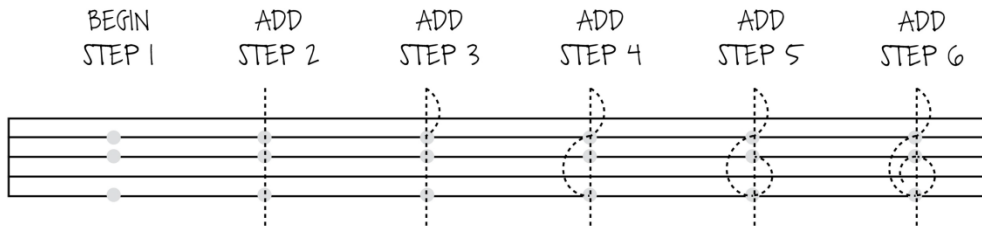
Student Name: \_\_\_\_\_

# TREBLE CLEF

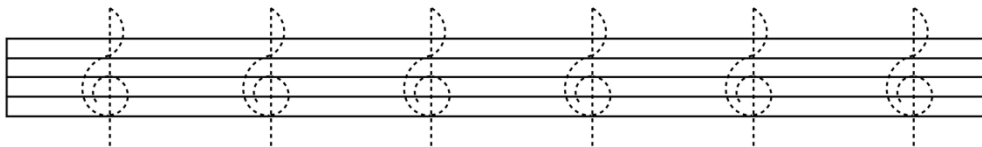
Follow each step below to learn how to draw a treble clef.

- STEP 1: Draw one small dot on the 4th, 3rd, and 1st Lines of the staff.  
These should be directly above and below each other.
- STEP 2: Draw a line straight down beginning above the staff and ending below the staff.
- STEP 3: Draw a semi-circle to the right from the top of your line down to the dot on the 4th Line.
- STEP 4: Draw a semi-circle to the left from the dot on the 4th Line down to the dot on the 1st Line.
- STEP 5: Draw a semi-circle to the right from the dot on the 1st Line up to the dot on the 3rd Line.
- STEP 6: Draw a semi-circle to the left from the dot on the 3rd Line down to just below the 2nd Line.

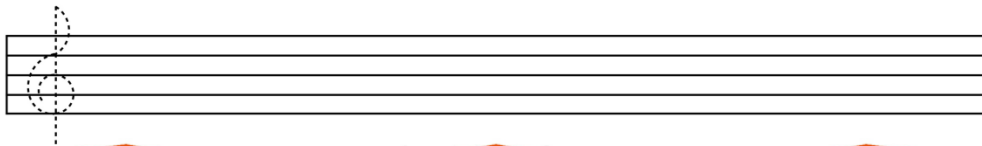
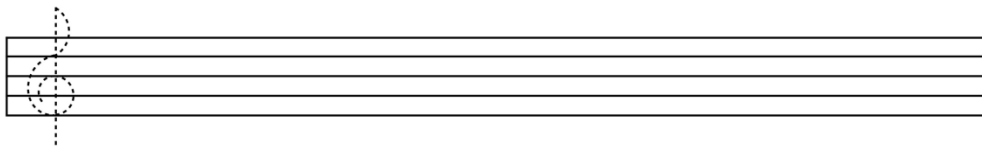
Trace each step below.



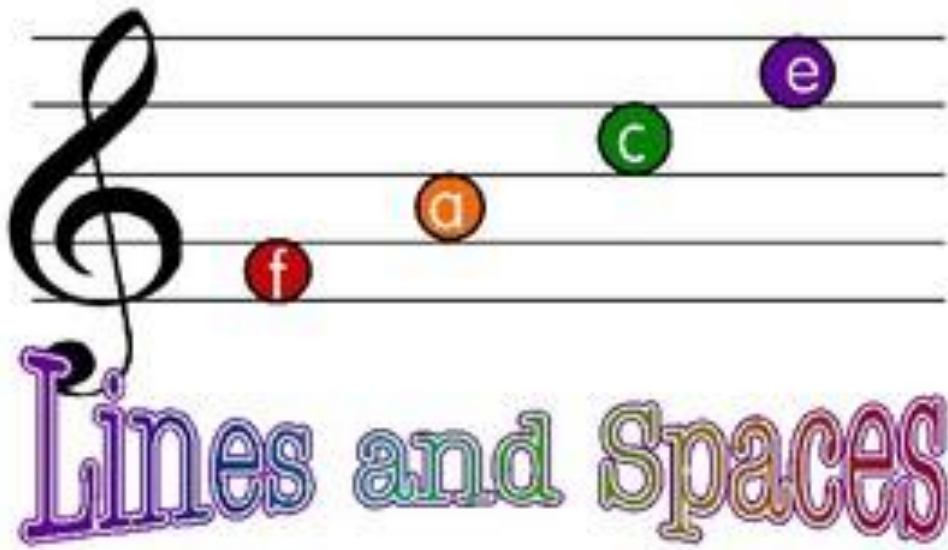
Trace the treble clefs below.



Practice on your own.



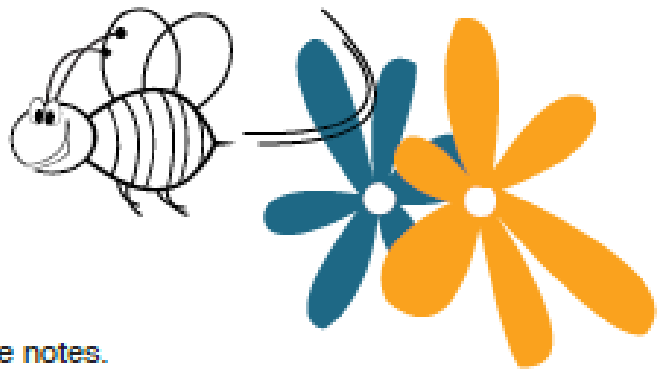
# Treble Clef Notes Guide



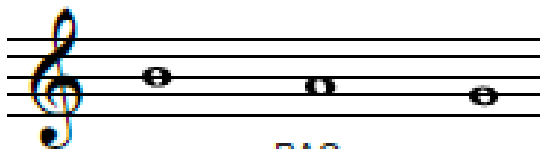
**Directions:** Before completing the worksheet, review the names of the lines and spaces of the treble clef. After reviewing the guide, finish the worksheet **WITHOUT THE GUIDE!**

# MUSICAL SPELLING BEE

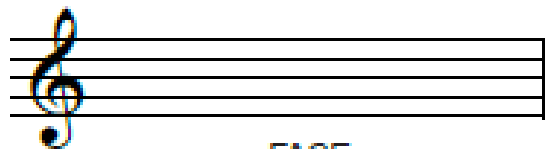
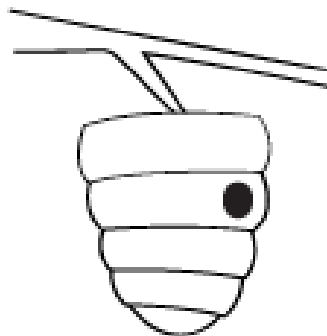
Treble Clef Note Names



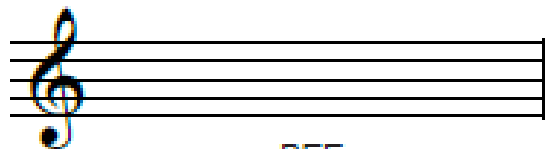
Spell the word below the staff in whole notes.



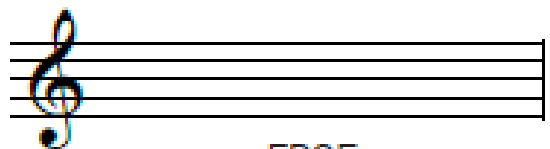
BAG



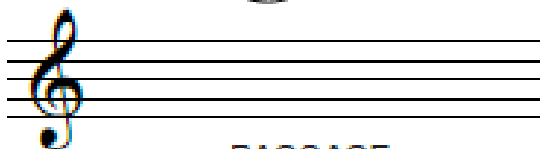
FACE



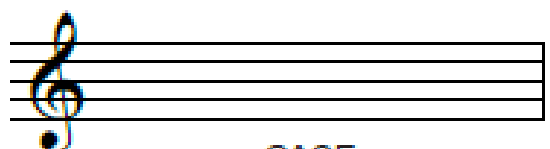
BEE



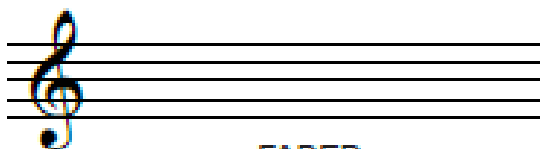
EDGE



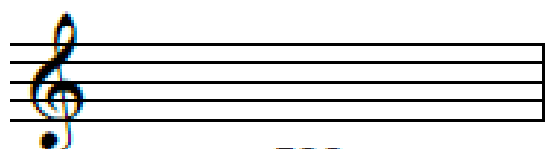
BAGGAGE



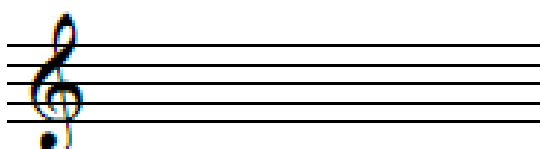
CAGE



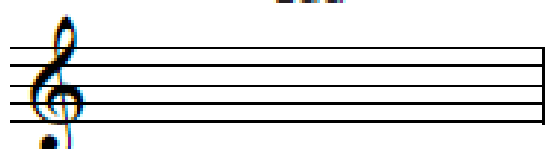
FADED



EGG



DAD



CABBAGE

**Ready, Set, Go! Note Name Speed Test** is designed to challenge students to develop speed and accuracy with their note naming skills. With the clock ticking, students name ten notes as fast as they can and record their time. Each incorrect answer adds five seconds. Repeat.

Treble Clef (G Clef)/G Position



# READY, SET, GO!

## Note Name Speed Test



Min \_\_\_\_ Sec \_\_\_\_

A musical staff in treble clef containing ten quarter notes. The notes are: G4, A4, B4, C5, B4, A4, G4, F4, E4, and D4.

— — — — — — — — — —

Min \_\_\_\_ Sec \_\_\_\_

A musical staff in treble clef containing ten quarter notes. The notes are: G4, A4, B4, C5, B4, A4, G4, F4, E4, and D4.

— — — — — — — — — —

Min \_\_\_\_ Sec \_\_\_\_

A musical staff in treble clef containing ten quarter notes. The notes are: G4, A4, B4, C5, B4, A4, G4, F4, E4, and D4.

— — — — — — — — — —

Min \_\_\_\_ Sec \_\_\_\_

A musical staff in treble clef containing ten quarter notes. The notes are: G4, A4, B4, C5, B4, A4, G4, F4, E4, and D4.

— — — — — — — — — —