



[www.joshuaisd.org/bond2024](http://www.joshuaisd.org/bond2024)







# LONG-RANGE PLANNING PROCESS



Reviewed district-wide historic and future enrollment projections



Assessed campus and departmental needs



Gathered feedback from a Future Planning Committee made up of admin, staff, and community members



A recommendation was made to the Board of Trustees on February 16, 2024



Board of Trustees called a bond in the amount of \$106,246,000

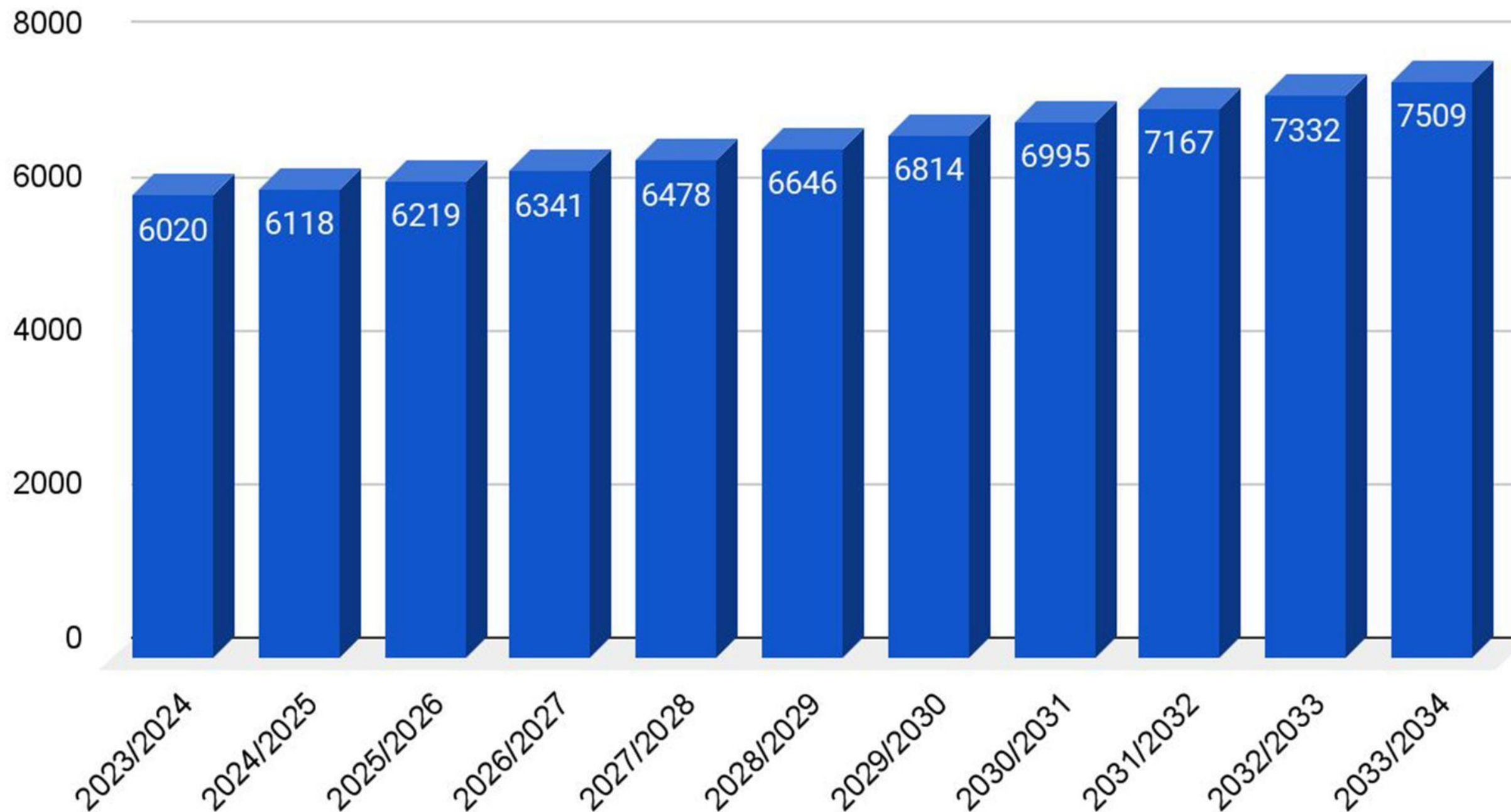


Election day is Saturday, May 4, 2024



# JOSHUA ISD IS GROWING

## Enrollment Growth



Zonda Education conducted a demographic study for the district projecting Joshua ISD to enroll more than 6,400 students by 2027/28, and approximately 7,000 students by the 2031/32 school year.

In addition, Elder and North Joshua Elementary are currently exceeding capacity, with North Joshua projected to exceed capacity by approximately 315 students in the 2032/33 school year.



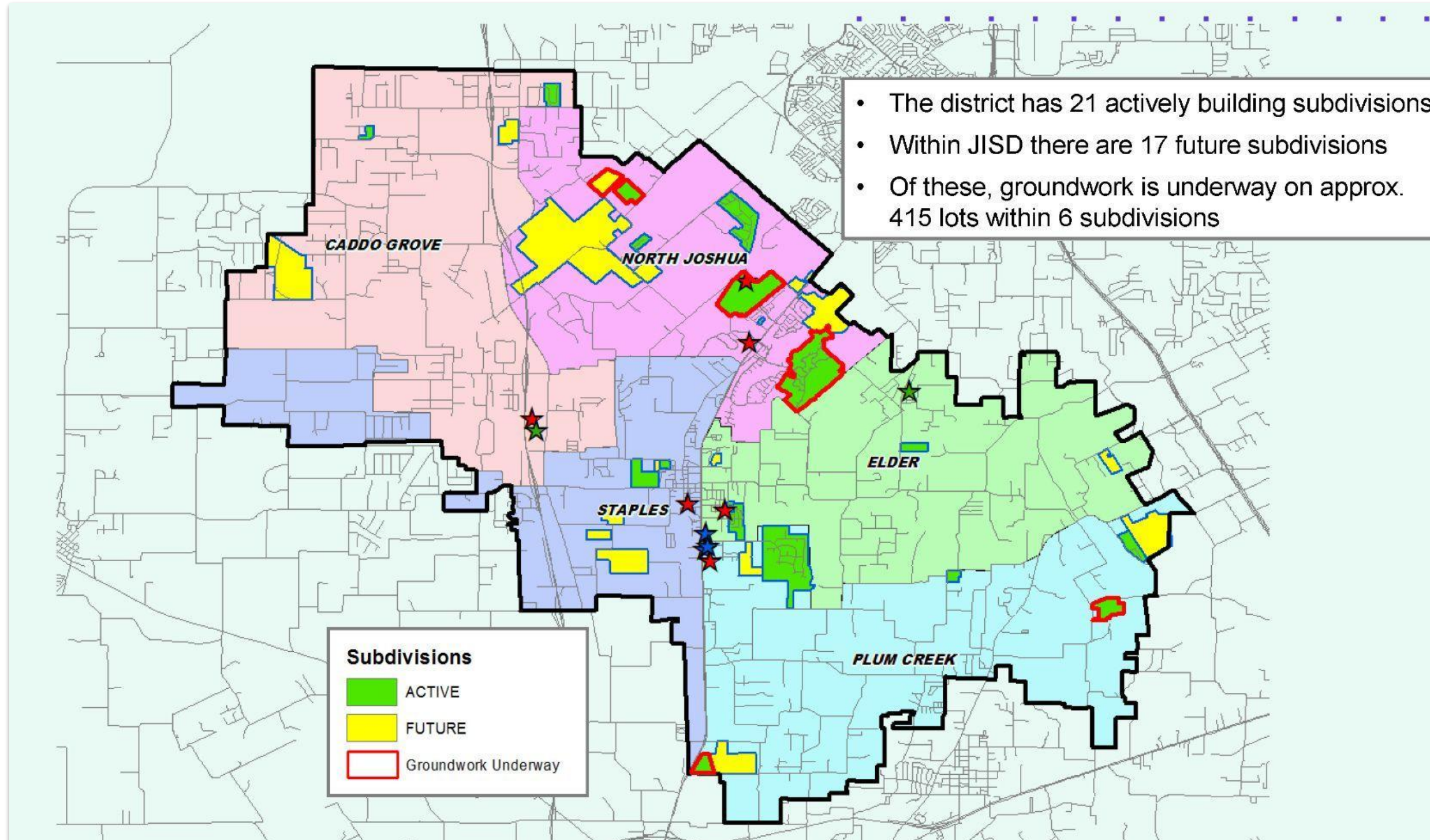


# JISD ENROLLMENT PROJECTION

		Fall	Enrollment Projections									
Campus	Capacity	2023/24	2024/25	2025/26	2026/27	2027/28	2028/29	2029/30	2030/31	2031/32	2032/33	2033/34
A.G. Elder Elementary	608	666	677	693	706	722	734	743	753	759	767	776
Caddo Grove Elementary	646	626	630	648	661	674	692	714	738	759	780	805
H.D. Staples Elementary	532	428	445	457	472	482	491	499	505	514	522	531
North Joshua Elementary	703	718	743	773	806	839	873	911	945	980	1,018	1,058
Plum Creek Elementary	627	448	466	480	499	524	554	582	611	638	653	669
<b>ELEMENTARY TOTALS</b>	<b>3,116</b>	<b>2,886</b>	<b>2,961</b>	<b>3,051</b>	<b>3,144</b>	<b>3,241</b>	<b>3,344</b>	<b>3,449</b>	<b>3,552</b>	<b>3,650</b>	<b>3,740</b>	<b>3,839</b>
Elementary Percent Change		2.96%	2.60%	3.04%	3.05%	3.09%	3.18%	3.14%	2.99%	2.76%	2.47%	2.65%
Elementary Absolute Change		83	75	90	93	97	103	105	103	98	90	99
R.C. Loflin Middle School	1,181	726	721	703	708	724	743	758	779	801	824	849
Nichols Middle School	700	603	634	673	705	715	729	745	759	771	782	792
<b>MIDDLE SCHOOL TOTALS</b>	<b>1,881</b>	<b>1,329</b>	<b>1,355</b>	<b>1,376</b>	<b>1,413</b>	<b>1,439</b>	<b>1,472</b>	<b>1,503</b>	<b>1,538</b>	<b>1,572</b>	<b>1,606</b>	<b>1,641</b>
Middle School Percent Change		-0.52%	1.96%	1.55%	2.69%	1.84%	2.29%	2.11%	2.33%	2.21%	2.16%	2.18%
Middle School Absolute Change		-7	26	21	37	26	33	31	35	34	34	35
Joshua 9th Grade Center	699	478	467	478	472	491	500	511	519	534	545	557
Joshua High School	1,411	1,298	1,301	1,279	1,279	1,273	1,296	1,317	1,352	1,377	1,407	1,438
New Horizon High School	100	29	34	35	33	34	34	34	34	34	34	34
<b>HIGH SCHOOL TOTALS</b>	<b>2,210</b>	<b>1,805</b>	<b>1,802</b>	<b>1,792</b>	<b>1,784</b>	<b>1,798</b>	<b>1,830</b>	<b>1,862</b>	<b>1,905</b>	<b>1,945</b>	<b>1,986</b>	<b>2,029</b>
High School Percent Change		2.62%	-0.17%	-0.54%	-0.48%	0.80%	1.78%	1.73%	2.32%	2.10%	2.10%	2.17%
High School Absolute Change		46	-3	-10	-9	14	32	32	43	40	41	43
<b>DISTRICT TOTALS</b>	<b>7,207</b>	<b>6,020</b>	<b>6,118</b>	<b>6,219</b>	<b>6,341</b>	<b>6,478</b>	<b>6,646</b>	<b>6,814</b>	<b>6,995</b>	<b>7,167</b>	<b>7,332</b>	<b>7,509</b>
District Percent Change		2.07%	1.63%	1.66%	1.95%	2.16%	2.59%	2.52%	2.66%	2.46%	2.30%	2.41%
District Absolute Change		122	98	101	121	137	168	168	181	172	165	177



# JISD HOUSING DEVELOPMENTS



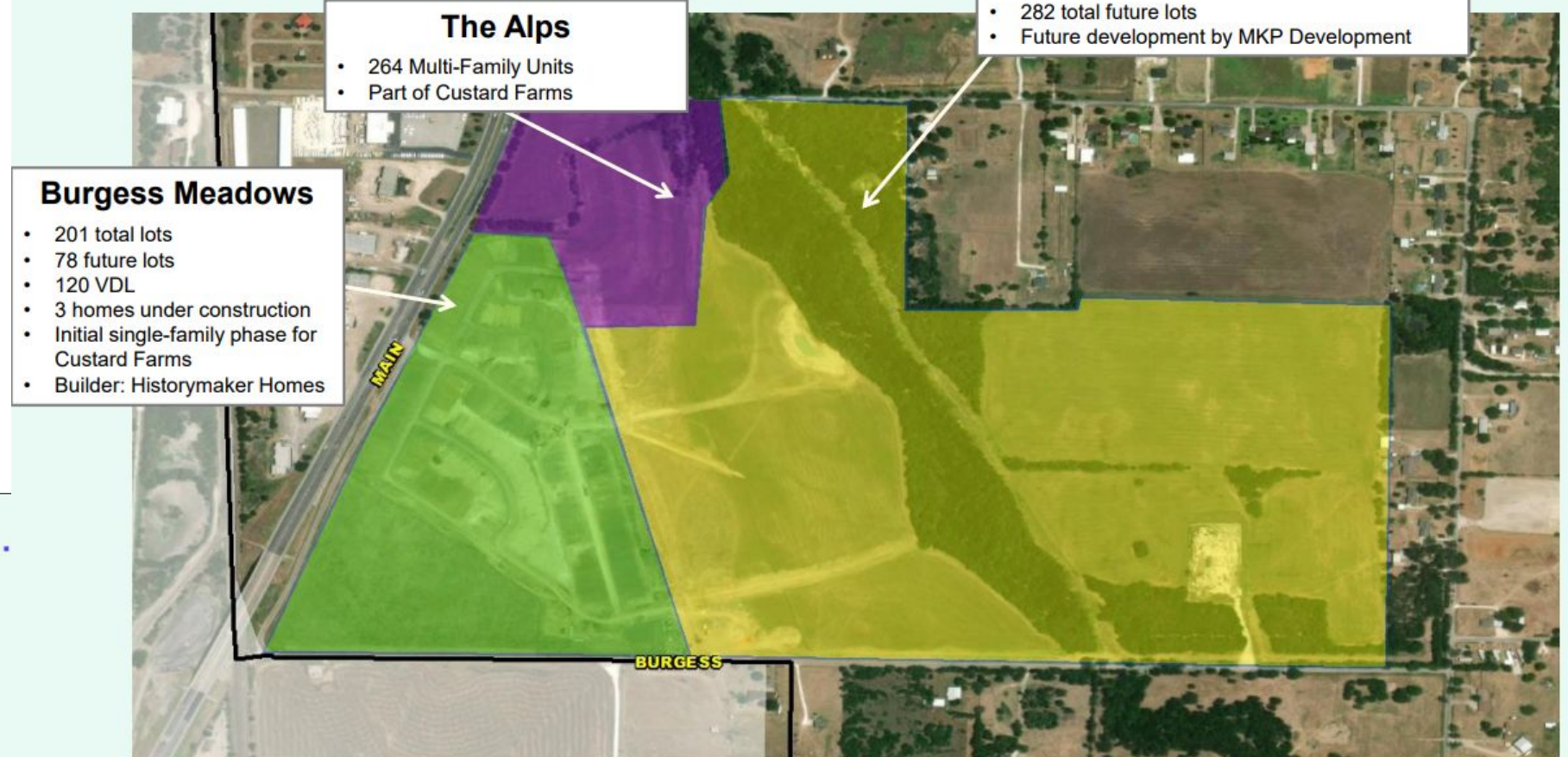
JISD has roughly 120 homes currently in inventory with 500 additional lots available to build on.



# JISD HOUSING DEVELOPMENTS



## Residential Activity



October 2023



## Residential Activity

### The Parks at Panchasarp Farms

- 811 total lots
- 583 future lots
- 42 vacant developed lots
- 19 homes under construction
- 157 occupied homes







# BOND SCOPE

## Proposition A | \$63.1M

Construction of a new elementary school and an addition to Nichols Middle School to have more classrooms for growth

## Proposition B | \$8.9M

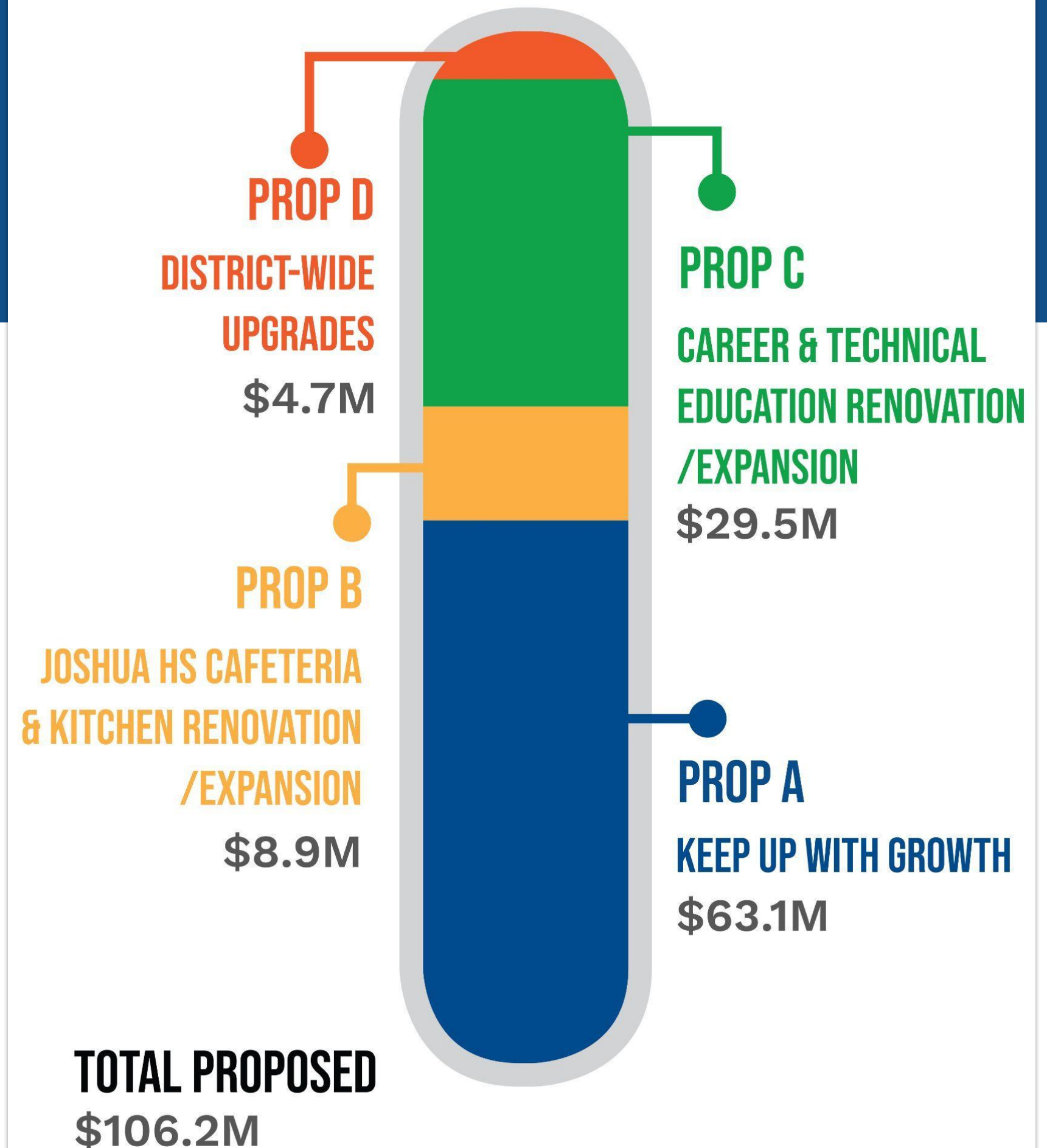
Renovation and expansion updates to the cafeteria and kitchen at Joshua High School

## Proposition C | \$29.5M

26,000 square-foot renovation and a 31,000 square-foot addition of the Career and Technical Education facility at Joshua High School

## Proposition D | \$4.7M

HVAC replacements, paving improvements at multiple campuses and safety and security upgrades





# BOND SCOPE - Proposition D

## Proposition D | \$4.7M

HVAC replacements, paving improvements at multiple campuses and safety and security upgrades

- HVAC - RTU's
  - over 800 RTU's on our buildings
  - 360 are outside of their useful life span
  - Units on some campuses were installed in the early to mid 1990s







# BOND SCOPE - Proposition D

## Proposition D | \$4.7M

HVAC replacements, paving improvements at multiple campuses and safety and security upgrades

- Paving
  - Parking at Loflin and Caddo need to be replaced





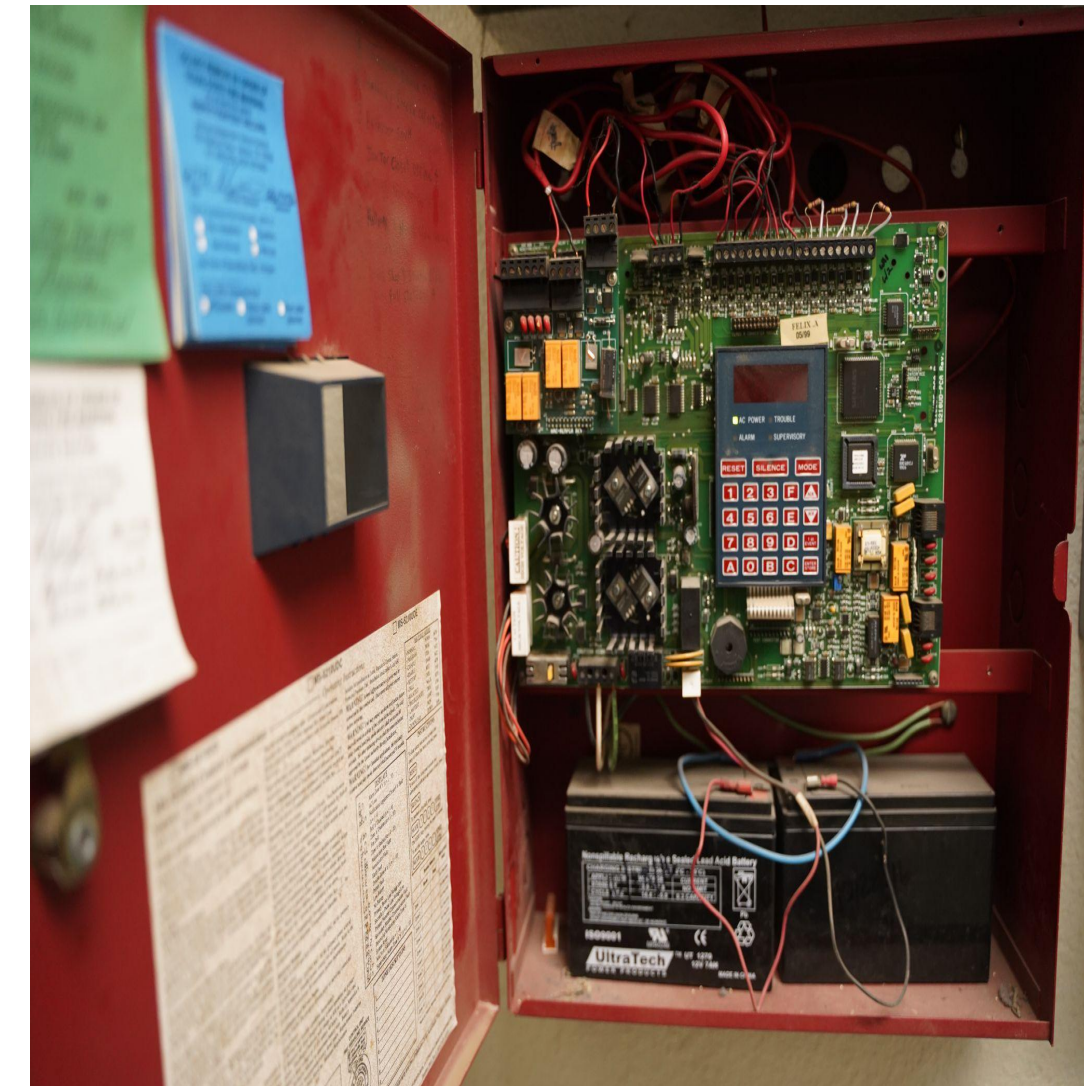


# BOND SCOPE - Proposition D

## Proposition D | \$4.7M

HVAC replacements, paving improvements at multiple campuses and safety and security upgrades

- Fire Alarms
  - Replace units - new control panels, wires, and devices
  - Units over twenty years old and antiquated
  - Priority needs - AG instructional facility, NGC, North Joshua, Caddo Grove, Staples







# SCHOOL FUNDING 101



## Maintenance & Operations

Day-to-day operations and expenses such as: salaries, utilities, supplies, instructional materials, repairs, and fuel.

(~80% of the district's M&O budget goes to teacher and staff salaries.)

For the average citizen, this is similar to expenses such as: groceries, minor house repairs, utilities, car fuel, and routine services.



## Interest & Sinking

Principal and interest payments on debt issued for such things as: new construction, renovations, heating and AC systems, roof replacements and land purchases.

For the average citizen, this is similar to expenses such as: a home mortgage, home renovation, land purchases, major appliance replacement, or auto purchases.





## FINANCIAL IMPACT

If all bond propositions pass, the annual tax impact would be \$308.04 or \$25.67 per month for the average home value of \$286,454 in Joshua ISD.

This would be a 17.03 cent I&S tax rate impact.



=







# FINANCIAL IMPACT BY PROPOSITION

	Monthly Impact*	Tax Rate Impact**
Proposition A - \$63.1M	\$15.24	\$0.1011
Proposition B - \$8.9M	\$2.17	\$0.0144
Proposition C - \$29.5M	\$7.13	\$0.0473
Proposition D - \$4.7M	\$1.13	\$0.0075

\*Estimated based on the average home value in Joshua ISD (\$286,454)

\*\*Estimated based on 30 year bond amortizations and annual increases to aggregate property values





## JISD TAX RATE HISTORY

YEAR	M&O	I&S	TOTAL
2019-20	1.0683	0.3717	1.4400
2020-21	1.0243	0.3717	1.3960
2021-22	0.9603	0.3297	1.2900
2022-23	0.9429	0.3297	1.2726
2023-24	0.7575	0.3297	1.0872

The total tax rate has decreased over 52 cents since 2016.





# SCHOOL FUNDING BY THE GLASS

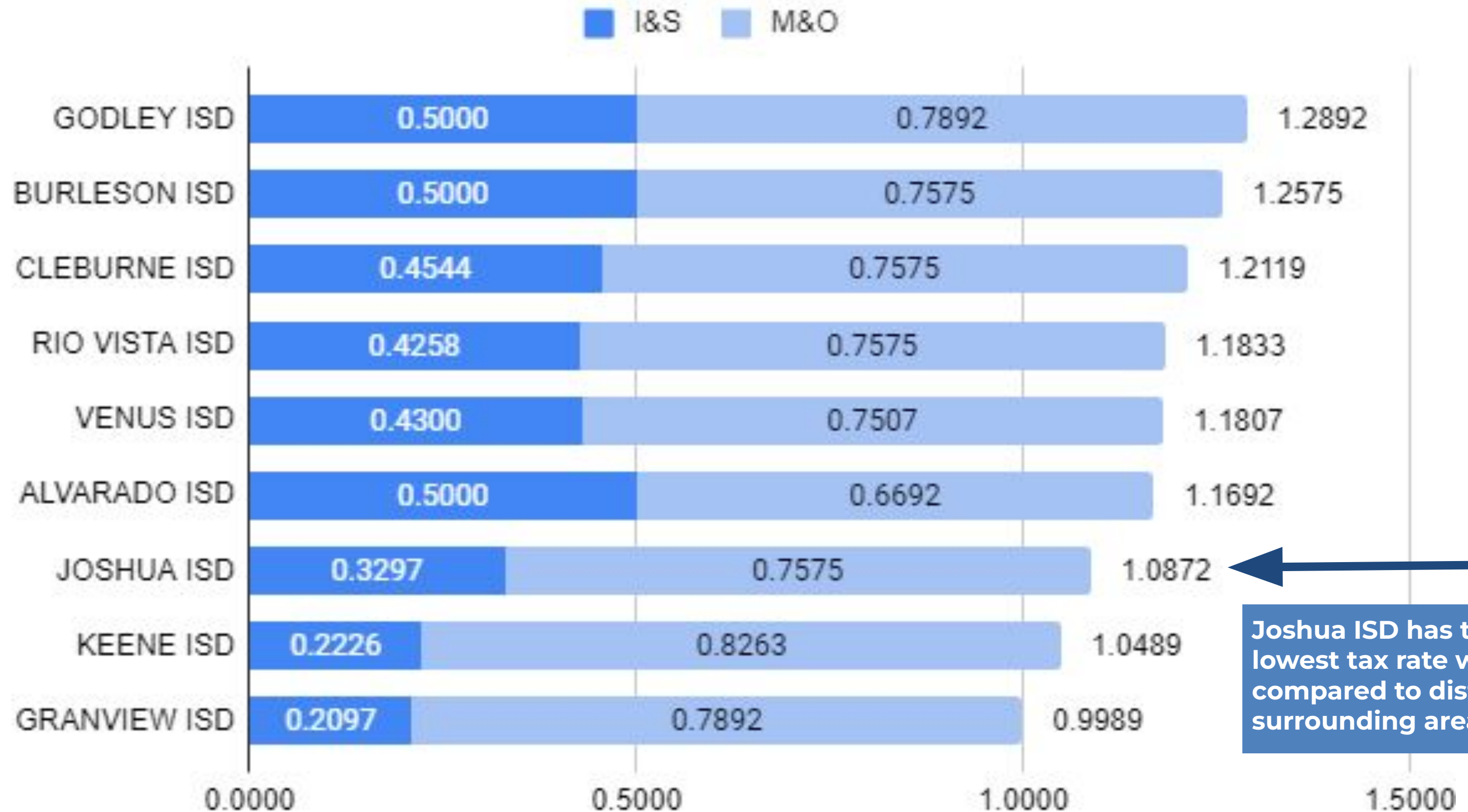


Student enrollment, attendance, demographics,  
and programs determine the size of the glass.





# TAX RATE COMPARISON



Joshua ISD has the third lowest tax rate when compared to districts in the surrounding area.





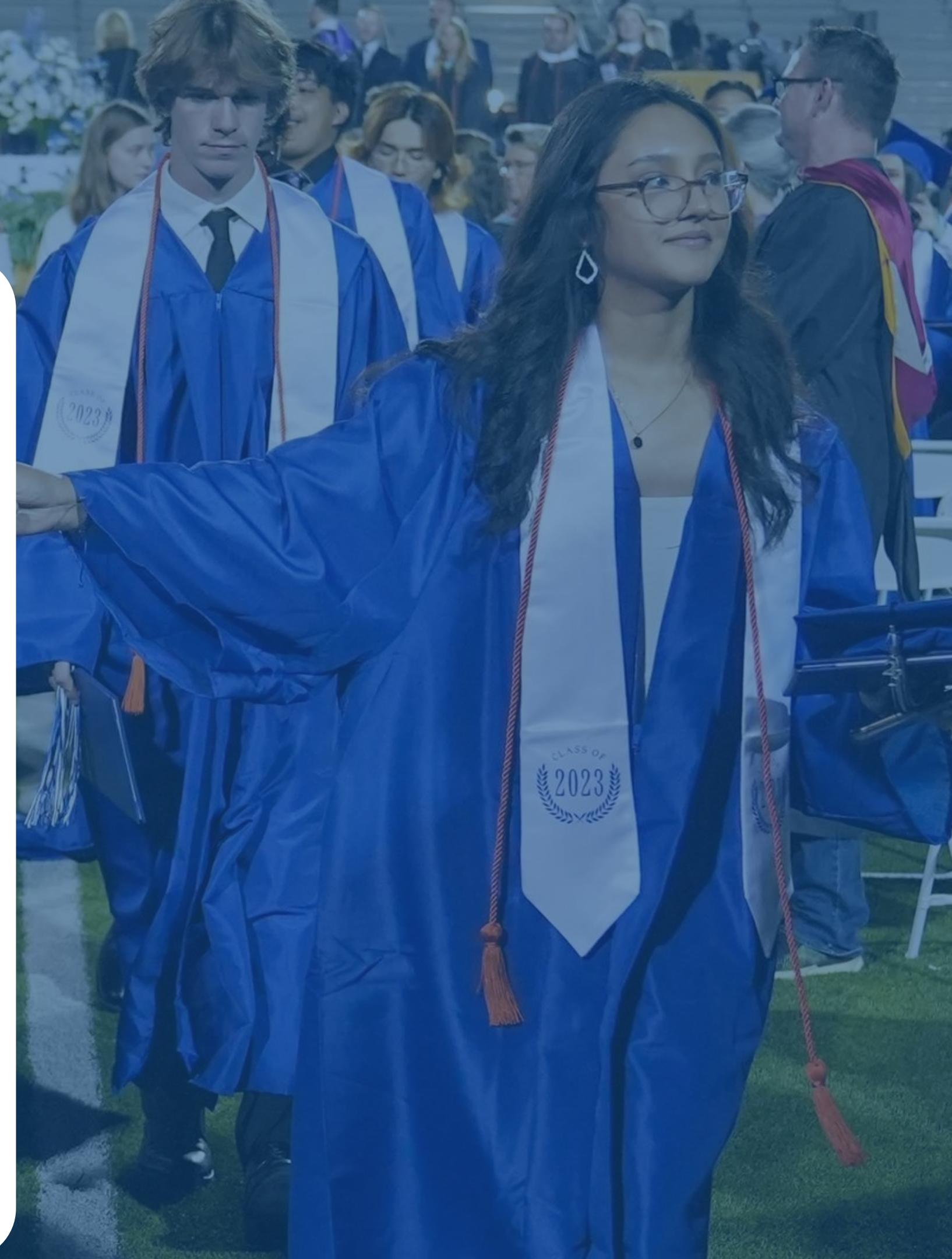
# HOMEOWNERS 65 AND OVER

No Tax Increase for 65 and Older



Under state law, the dollar amount of school taxes imposed on the residence homestead of a person 65 years of age or older cannot be increased above the amount paid in the first year after the person turned 65 or became disabled. This freeze applies regardless of changes in tax rate or property value, unless there are new improvements/additions to the homestead.

*You must apply for this exemption.*



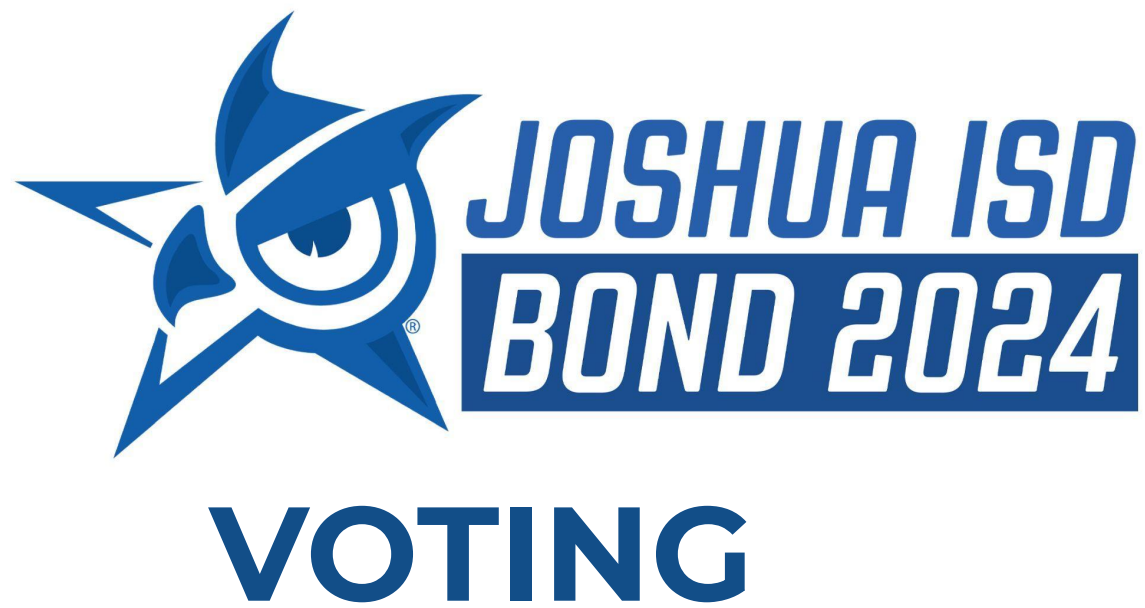




## **Why will the ballot read: *“This is a property tax increase”?***

This requirement was a part of new laws coming from Austin after the legislative session in 2019. The Texas legislature wanted the ballot language to be clear, that voted bonds were the method that we use to finance school construction. Paying for these voted bonds requires tax revenues.





Register to Vote by  
**April 4**



Early Voting is  
**April 22 - April 30**



Election Day is  
**Saturday, May 4**



Visit **[www.joshuaisd.org/bond2024](http://www.joshuaisd.org/bond2024)**  
for voting times and locations



# Joshua ISD



QUESTIONS?

